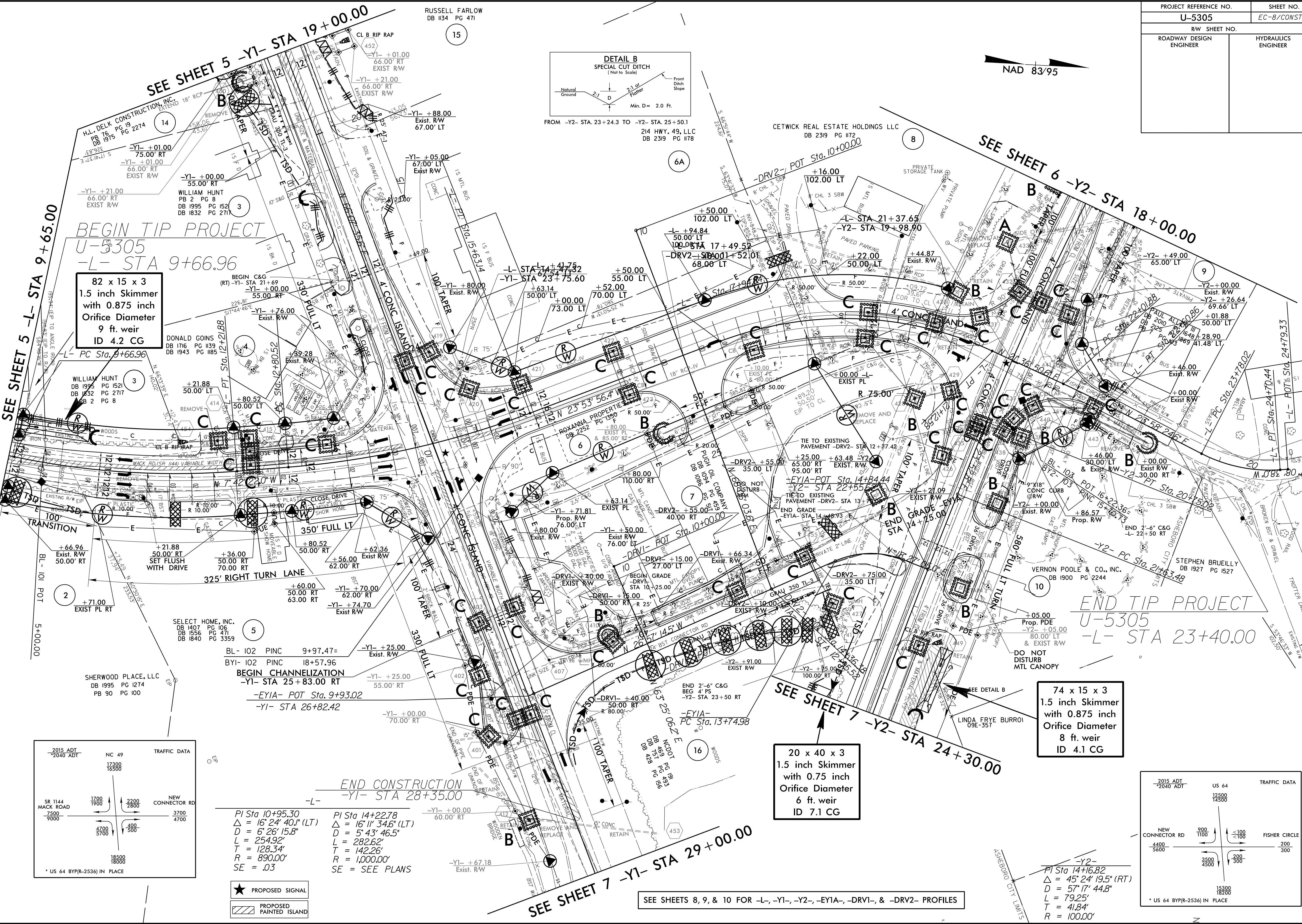
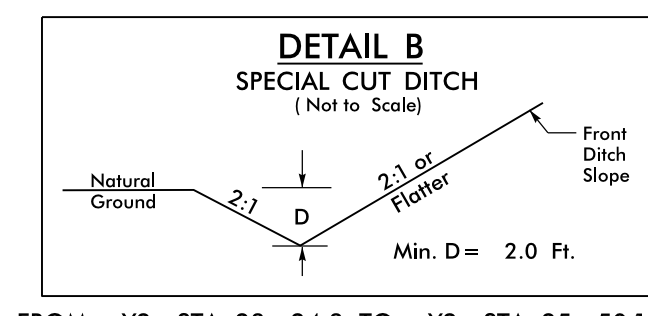
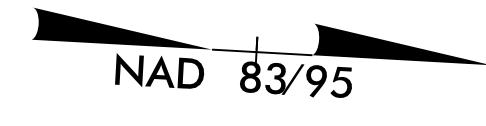


PROJECT REFERENCE NO.	SHEET NO.
U-5305	EC-B/CONST.4
RW SHEET NO.	
ROADWAY DESIGN ENGINEER	HYDRAULICS ENGINEER



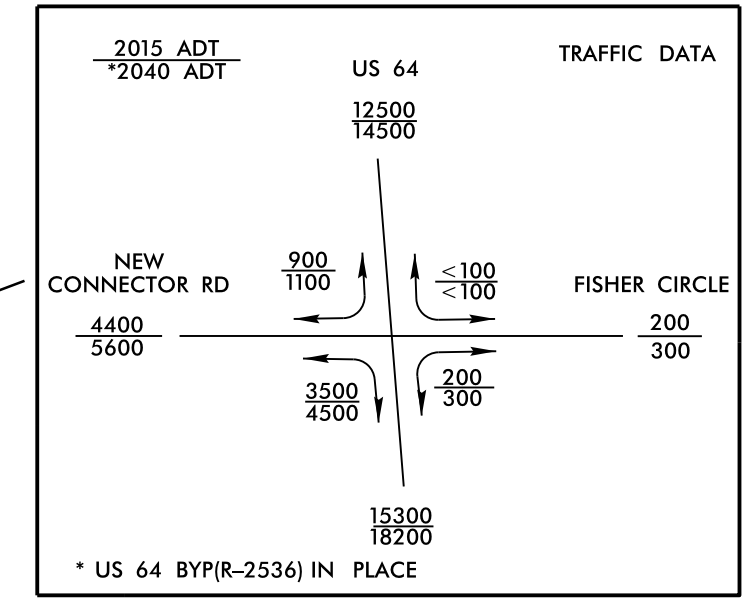
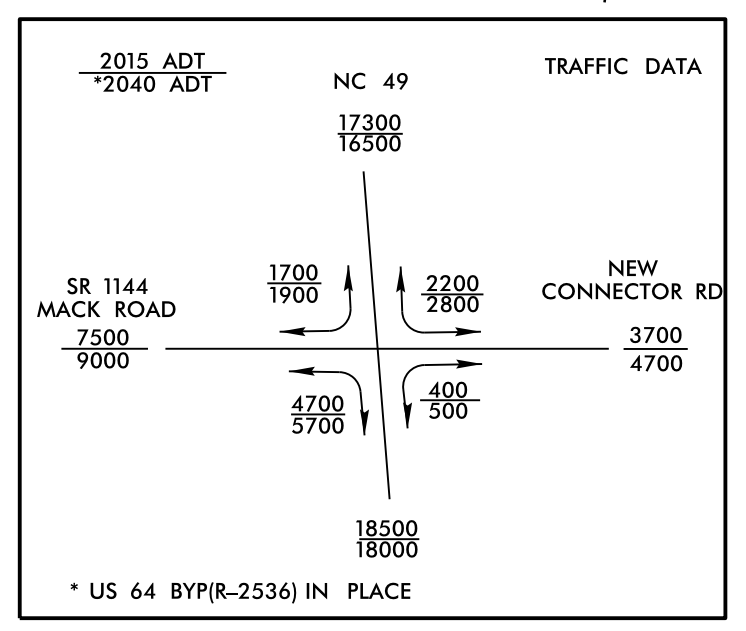
BEGIN TIP PROJECT
U-5305
-L- STA 9+66.96

82 x 15 x 3
1.5 inch Skimmer
with 0.875 inch
Orifice Diameter
9 ft. weir
ID 4.2 CG

END TIP PROJECT
U-5305
-L- STA 23+40.00

74 x 15 x 3
1.5 inch Skimmer
with 0.875 inch
Orifice Diameter
8 ft. weir
ID 4.1 CG

20 x 40 x 3
1.5 inch Skimmer
with 0.75 inch
Orifice Diameter
6 ft. weir
ID 7.1 CG



END CONSTRUCTION
-Y1- STA 28+35.00

PI Sta 10+95.30
 $\Delta = 16' 24' 40.1''$ (LT)
 $D = 6' 26' 15.8''$
 $L = 254.92'$
 $T = 128.34'$
 $R = 890.00'$
 $SE = .03$

PI Sta 14+22.78
 $\Delta = 16' 11' 34.6''$ (LT)
 $D = 5' 43' 46.5''$
 $L = 282.62'$
 $T = 142.26'$
 $R = 1,000.00'$
 $SE = \text{SEE PLANS}$

★ PROPOSED SIGNAL
▨ PROPOSED PAINTED ISLAND

SEE SHEETS 8, 9, & 10 FOR -L-, -Y1-, -Y2-, -EY1A-, -DRV1-, & -DRV2- PROFILES

8/17/99
24-MAR-2015 13:54 D:\ps\10\U5305_EC_PSH_4 - Copy.dgn
24-MAR-2015 13:54 D:\ps\10\U5305_EC_PSH_4 - Copy.dgn