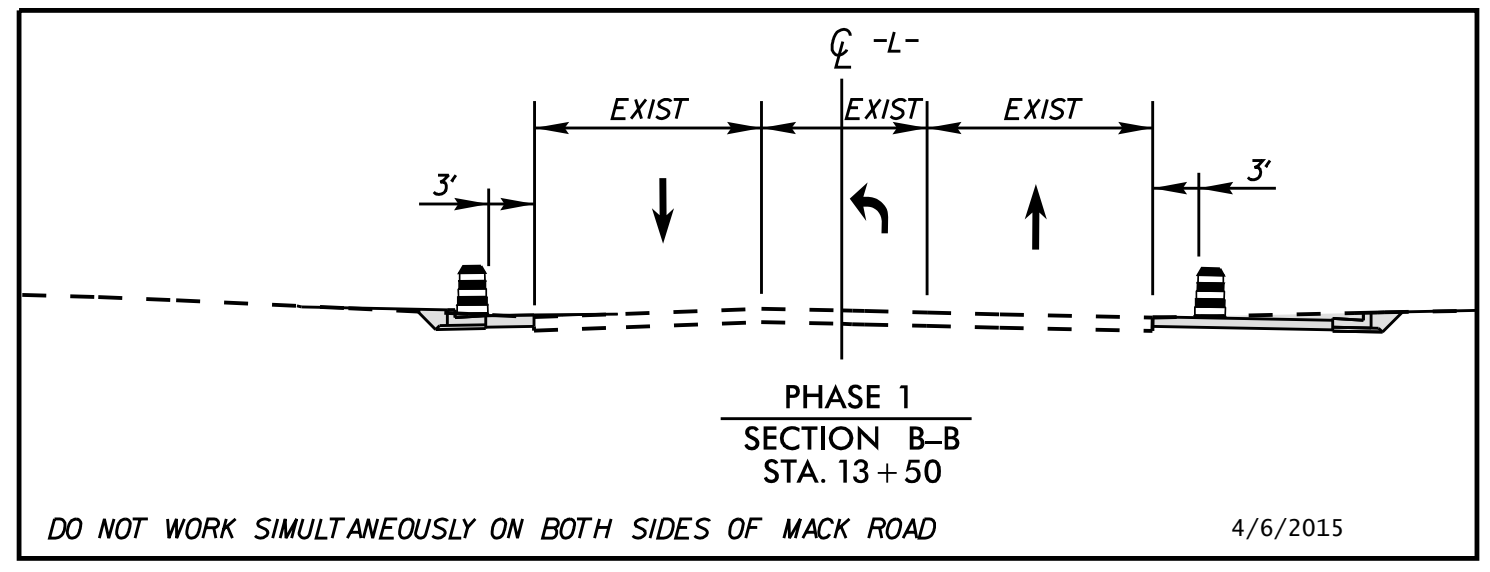


SEE SHEET TMP-5 -YI- STA 19+00.00

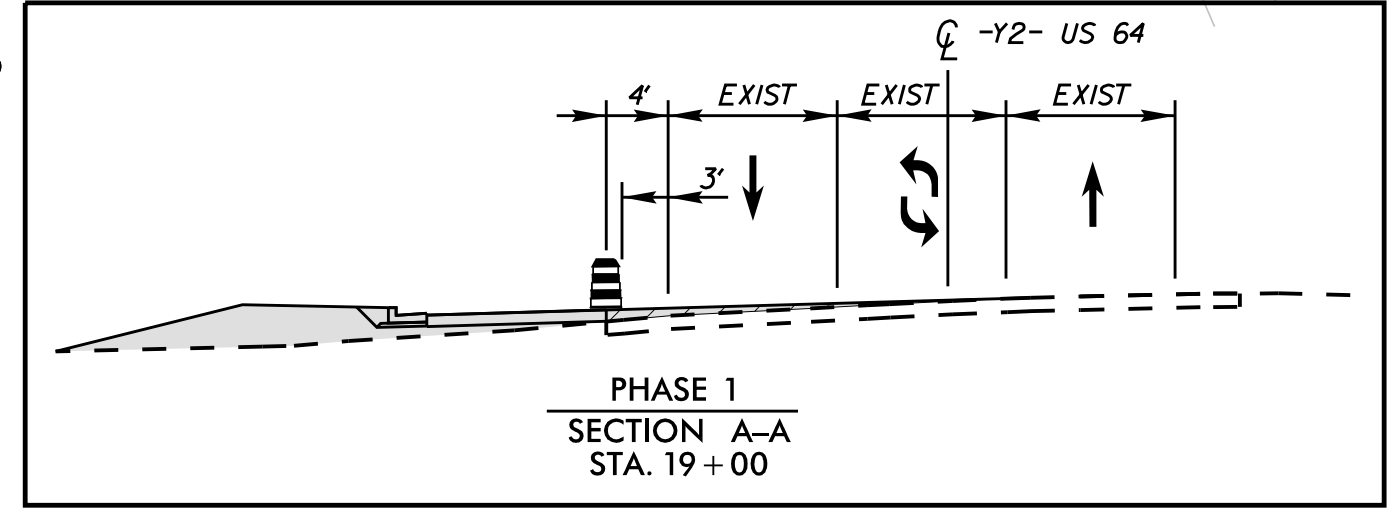
BEGIN CONSTRUCTION
-Y2- STA. 17+63

END CONSTRUCTION
-L- STA 22+69

SEE INSET THIS SHEET -L- STA. 10+00.00



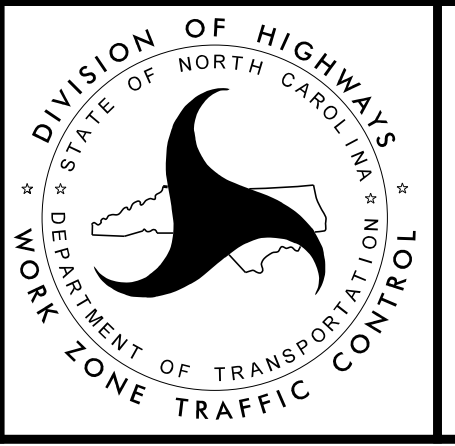
* EXISTING PAVEMENT MARKING AND ROADWAY LOCATIONS WITHIN THIS INSET ARE APPROXIMATE AND OUTSIDE OF SURVEYED PROJECT LIMITS. VERIFY ACTUAL LOCATIONS.



- WORK AREA
- PAVEMENT REMOVAL
- WEDGING

APPROVED: _____ DATE: _____

DocuSigned by:
Matt West
AC71A1D0798B425
4/6/2015



TRAFFIC CONTROL PHASE I

3/24/2015 K:\RAL_Roadway\01036234 - U-5305 TMP\Plan\Plan Sheets\U5305_TMP_PSH_04.dgn

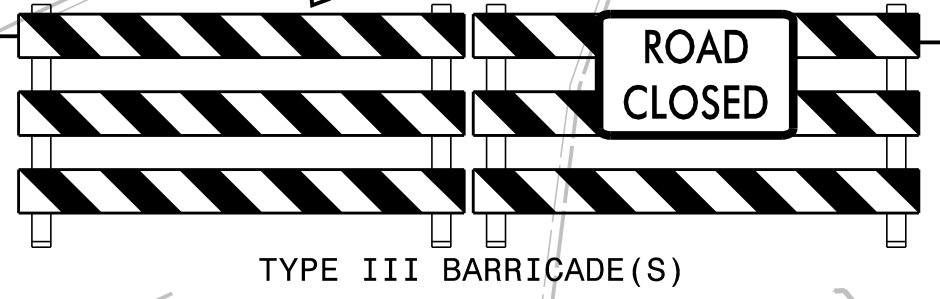
BEGIN CONSTRUCTION
-L- STA 9+00

SEE THIS SHEET
-L- STA. 10+00.00

SEE SHEET TMP-6 -YI- STA 29+00.00

SEE SHEET TMP-6 -Y2- STA 24+30.00

END CONSTRUCTION
-YI- STA. 27+35



INSTALL DRAINAGE STRUCTURES WITHIN THE ROAD WHILE MAINTAINING TRAFFIC AND USING TEMPORARY LANE CLOSURES (TYP)

-L- STA 13+58

-YI- STA 22+85

-YI- STA 14+00

-YI- STA 21+80

-Y2- US 64

MACK ROAD EXTENSION

CONNECTOR RD

NC 49

2 BRICK WALL

15' RCP IV

15' RCP IV

CB

15' RCP IV

CB

15' RCP IV

CB

15' RCP IV

CB

15' RCP IV

CB

15' RCP IV

CB

15' RCP IV

CB

15' RCP IV

CB

15' RCP IV

CB

15' RCP IV

CB

15' RCP IV

CB

15' RCP IV

CB

15' RCP IV

CB

15' RCP IV

CB

15' RCP IV

CB

15' RCP IV

CB

15' RCP IV

CB

15' RCP IV

CB

15' RCP IV

CB

15' RCP IV

CB

15' RCP IV

CB

15' RCP IV

CB

15' RCP IV

CB

15' RCP IV

CB

15' RCP IV

CB

15' RCP IV

CB

15' RCP IV

CB

15' RCP IV

CB

15' RCP IV

CB

15' RCP IV

CB

15' RCP IV

CB

15' RCP IV

CB