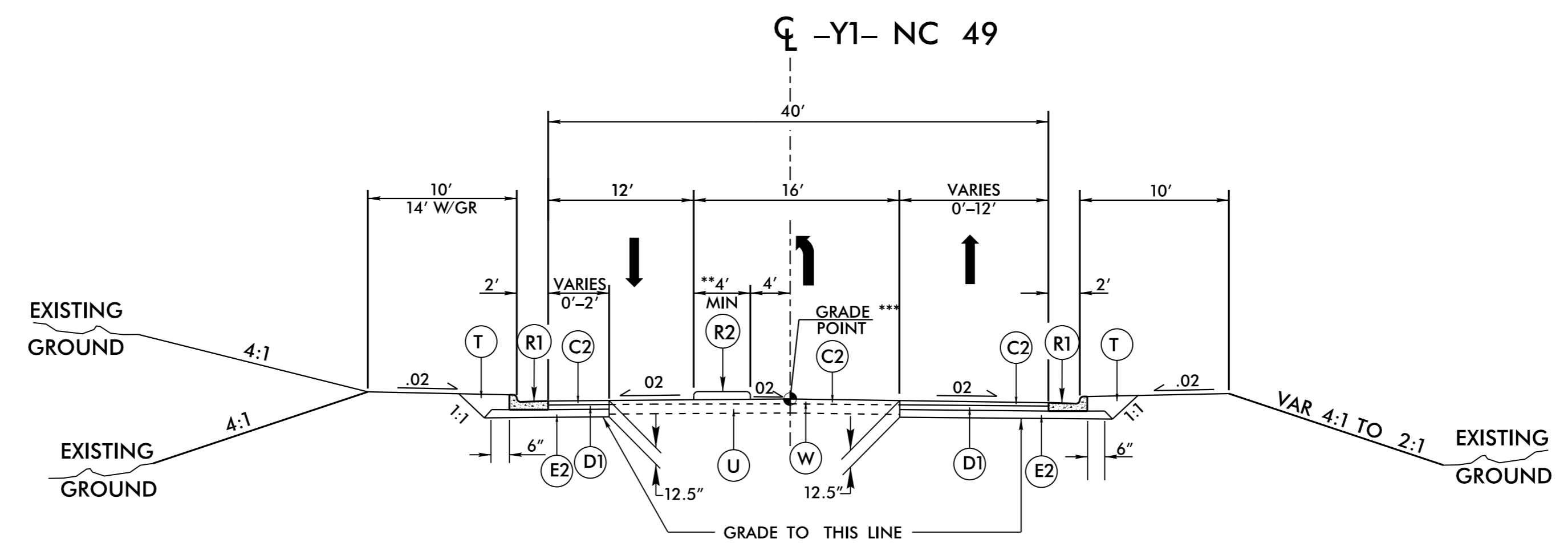


PROJECT REFERENCE NO. U-5305	SHEET NO. 2A-3
ROADWAY DESIGN ENGINEER SEAL 014571 James A. Spurr	PAVEMENT DESIGN ENGINEER SEAL 022896 Clark S. Morrison
DocuSigned by James Spurr 3/4/2015	DocuSigned by Clark S. Morrison 3/4/2015

PAVEMENT SCHEDULE	
C1	PROP. APPROX. 1.5" ASPHALT CONCRETE SURFACE COURSE TYPE S9.5B, AT AN AVERAGE RATE OF 168 LBS. PER SQ.YD.
C2	PROP. APPROX. 3" ASPHALT CONCRETE SURFACE COURSE TYPE S9.5B, AT AN AVERAGE RATE OF 168 LBS. PER SQ.YD. IN EACH OF TWO LAYERS.
C3	PROP. VAR. DEPTH ASPHALT CONCRETE SURFACE COURSE TYPE S9.5B, AT AN AVERAGE RATE OF 112 LBS. PER SQ. YD. PER 1" DEPTH. TO BE PLACED IN LAYERS NOT TO EXCEED 2" IN DEPTH.
D1	PROP. APPROX. 4" ASPHALT CONCRETE INTERMEDIATE COURSE TYPE I19.0B, AT AN AVERAGE RATE OF 456 LBS. PER SQ.YD.
D2	PROP. VAR. DEPTH ASPHALT CONCRETE INTERMEDIATE COURSE TYPE I19.0B, AT AN AVERAGE RATE OF 114 LBS. PER SQ. YD. PER 1" DEPTH. TO BE PLACED IN LAYERS NOT LESS THAN 2.5" IN DEPTH OR GREATER THAN 4" IN DEPTH.
E1	PROP. APPROX. 4" ASPHALT CONCRETE BASE COURSE TYPE B25.0B, AT AN AVERAGE RATE OF 456 LBS. PER SQ.YD.
E2	PROP. APPROX. 5.5" ASPHALT CONCRETE BASE COURSE TYPE B25.0B, AT AN AVERAGE RATE OF 627 LBS. PER SQ.YD.
E3	PROP. APPROX. 7" ASPHALT CONCRETE BASE COURSE TYPE B25.0B, AT AN AVERAGE RATE OF 399 LBS. PER SQ.YD. IN EACH OF TWO LAYERS
E4	PROP. VAR. DEPTH ASPHALT CONCRETE BASE COURSE TYPE B25.0B, AT AN AVERAGE RATE OF 114 LBS. PER SQ. YD. PER 1" DEPTH. TO BE PLACED IN LAYERS NOT LESS THAN 3" IN DEPTH OR GREATER THAN 5 1/2" IN DEPTH.
R1	PROPOSED 2'-6" CONCRETE CURB AND GUTTER
R2	PROPOSED 5" CONCRETE MONOLITHIC ISLAND
T	EARTH MATERIAL
U	EXISTING PAVEMENT.
V1	MILLING BITUMINOUS PAVEMENT. 0" - 1.5" DEPTH.
V2	MILLING BITUMINOUS PAVEMENT. 0" - 3.0" DEPTH.
W	VARIABLE DEPTH ASPHALT PAVEMENT (SEE STANDARD WEDGING DETAIL)

NOTE: PAVEMENT EDGE SLOPES ARE 1:1 UNLESS SHOWN OTHERWISE.



TYPICAL SECTION NO. 6

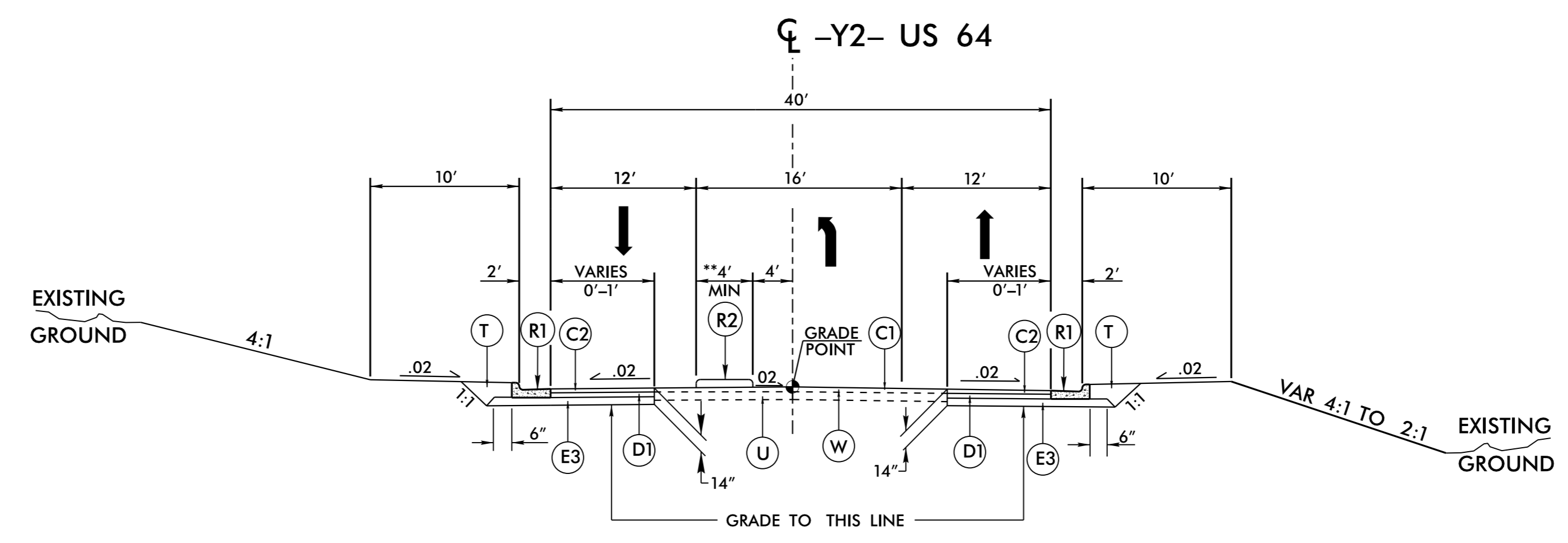
USE TYPICAL SECTION NO. 6 AS FOLLOWS

-Y1- STA. 21+69.00 TO STA 27+29.50

\*\*SEE INSET 3 AND PLANS FOR ISLAND LOCATIONS

\*\*\* RESURFACE EXISTING PAVEMENT FROM -Y1- STA 27+29.50 TO 28+10.00

NOTE: MILL AND RESURFACE WITH V2 AND C2 -Y1- STA 28+10.00 TO STA 28+35.00



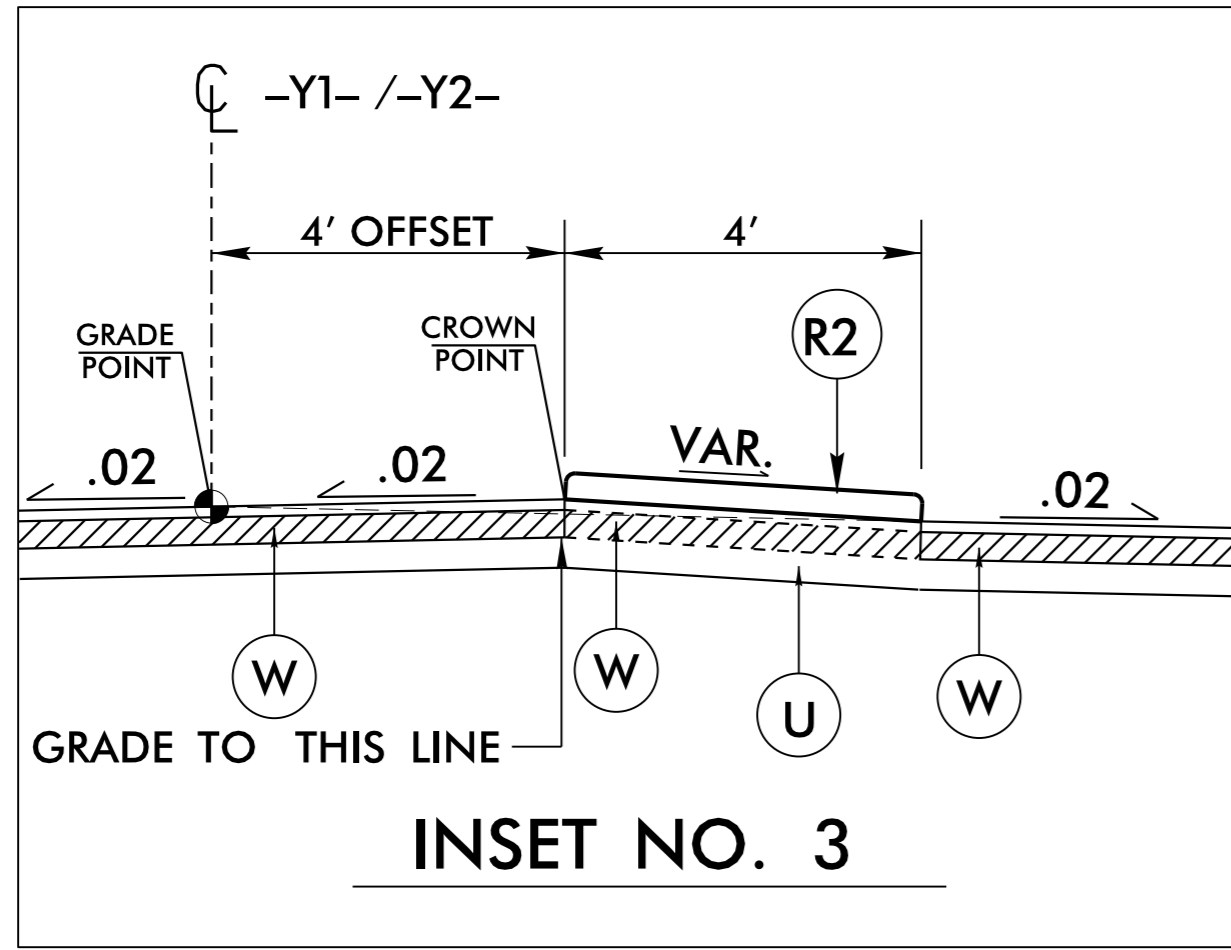
TYPICAL SECTION NO. 7

USE TYPICAL SECTION NO. 7 AS FOLLOWS

-Y2- STA. 17+60.00 TO STA 27+10.00

\*\*SEE INSET 3 AND PLANS FOR ISLAND LOCATIONS

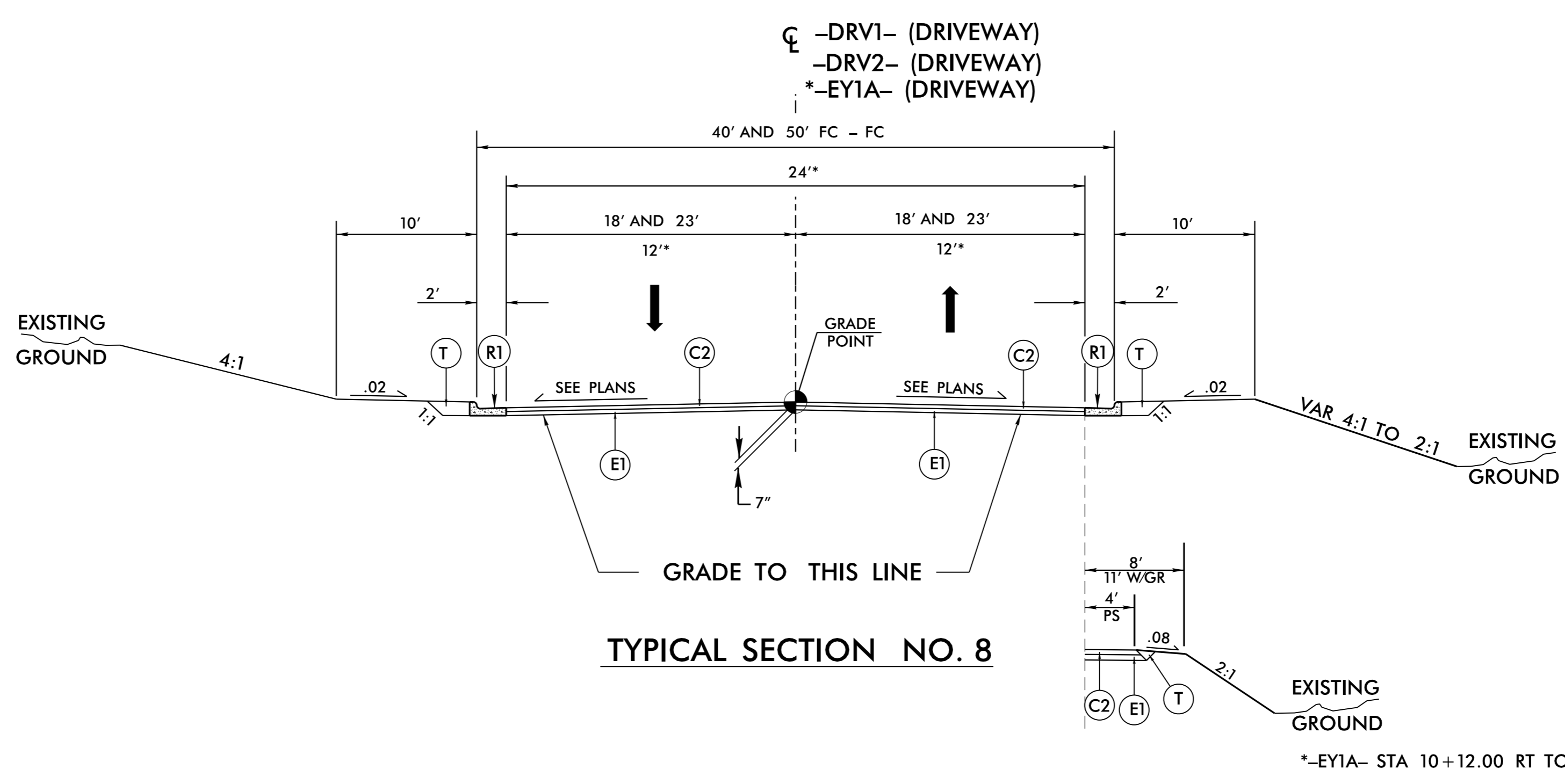
NOTE: MILL AND RESURFACE WITH V1 AND C1 -Y2- STA 17+45.00 TO STA 17+60.00  
-Y2- STA 27+10.00 TO STA 27+25.00



USE WITH TYPICAL SECTION NO. 6, AND 7

- \* -Y1- STA. 19+96.00 TO STA 22+74.00
- \* -Y1- STA. 24+55.00 TO STA 27+35.00
- \* -Y2- STA. 18+60.00 TO STA 19+30.00
- \* -Y2- STA. 20+77.00 TO STA 26+09.00

\*ISLAND LOCATED LEFT OF CENTERLINE



TYPICAL SECTION NO. 8

USE TYPICAL SECTION NO. 8 AS FOLLOWS

- DRV1- STA 10+25.00 TO STA. 10+83.89 (40' FC - FC)
- DRV2- STA. 11+72.01 TO STA. 14+36.38 (50' FC - FC)
- \*-EY1A- STA 10+12.00 TO STA. 13+47.78

\*-EY1A- STA 10+12.00 RT TO STA. 13+47.78 RT