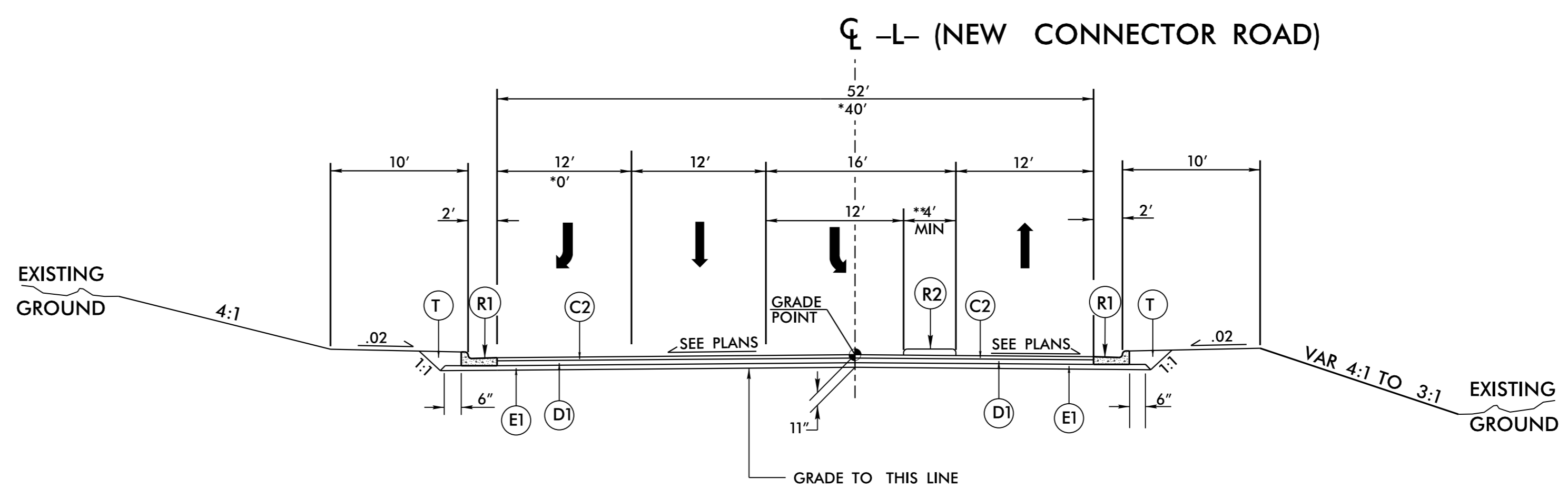


6/2/09

PAVEMENT SCHEDULE	
C1	PROP. APPROX. 1.5" ASPHALT CONCRETE SURFACE COURSE TYPE S9.5B, AT AN AVERAGE RATE OF 168 LBS. PER SQ.YD.
C2	PROP. APPROX. 3" ASPHALT CONCRETE SURFACE COURSE TYPE S9.5B, AT AN AVERAGE RATE OF 168 LBS. PER SQ.YD. IN EACH OF TWO LAYERS.
C3	PROP. VAR. DEPTH ASPHALT CONCRETE SURFACE COURSE TYPE S9.5B, AT AN AVERAGE RATE OF 112 LBS. PER SQ. YD. PER 1" DEPTH. TO BE PLACED IN LAYERS NOT TO EXCEED 2" IN DEPTH.
D1	PROP. APPROX. 4" ASPHALT CONCRETE INTERMEDIATE COURSE TYPE I19.0B, AT AN AVERAGE RATE OF 456 LBS. PER SQ.YD.
D2	PROP. VAR. DEPTH ASPHALT CONCRETE INTERMEDIATE COURSE TYPE I19.0B, AT AN AVERAGE RATE OF 114 LBS. PER SQ. YD. PER 1" DEPTH. TO BE PLACED IN LAYERS NOT LESS THAN 2.5" IN DEPTH OR GREATER THAN 4" IN DEPTH.
E1	PROP. APPROX. 4" ASPHALT CONCRETE BASE COURSE TYPE B25.0B, AT AN AVERAGE RATE OF 456 LBS. PER SQ.YD.
E2	PROP. APPROX. 5.5" ASPHALT CONCRETE BASE COURSE TYPE B25.0B, AT AN AVERAGE RATE OF 627 LBS. PER SQ.YD.
E3	PROP. APPROX. 7" ASPHALT CONCRETE BASE COURSE TYPE B25.0B, AT AN AVERAGE RATE OF 399 LBS. PER SQ.YD. IN EACH OF TWO LAYERS
E4	PROP. VAR. DEPTH ASPHALT CONCRETE BASE COURSE TYPE B25.0B, AT AN AVERAGE RATE OF 114 LBS. PER SQ. YD. PER 1" DEPTH. TO BE PLACED IN LAYERS NOT LESS THAN 3" IN DEPTH OR GREATER THAN 5 1/2" IN DEPTH.
R1	PROPOSED 2'-6" CONCRETE CURB AND GUTTER
R2	PROPOSED 5" CONCRETE MONOLITHIC ISLAND
T	EARTH MATERIAL
U	EXISTING PAVEMENT.
V1	MILLING BITUMINOUS PAVEMENT. 0" - 1.5" DEPTH.
V2	MILLING BITUMINOUS PAVEMENT. 0" - 3.0" DEPTH.
W	VARIABLE DEPTH ASPHALT PAVEMENT (SEE STANDARD WEDGING DETAIL)

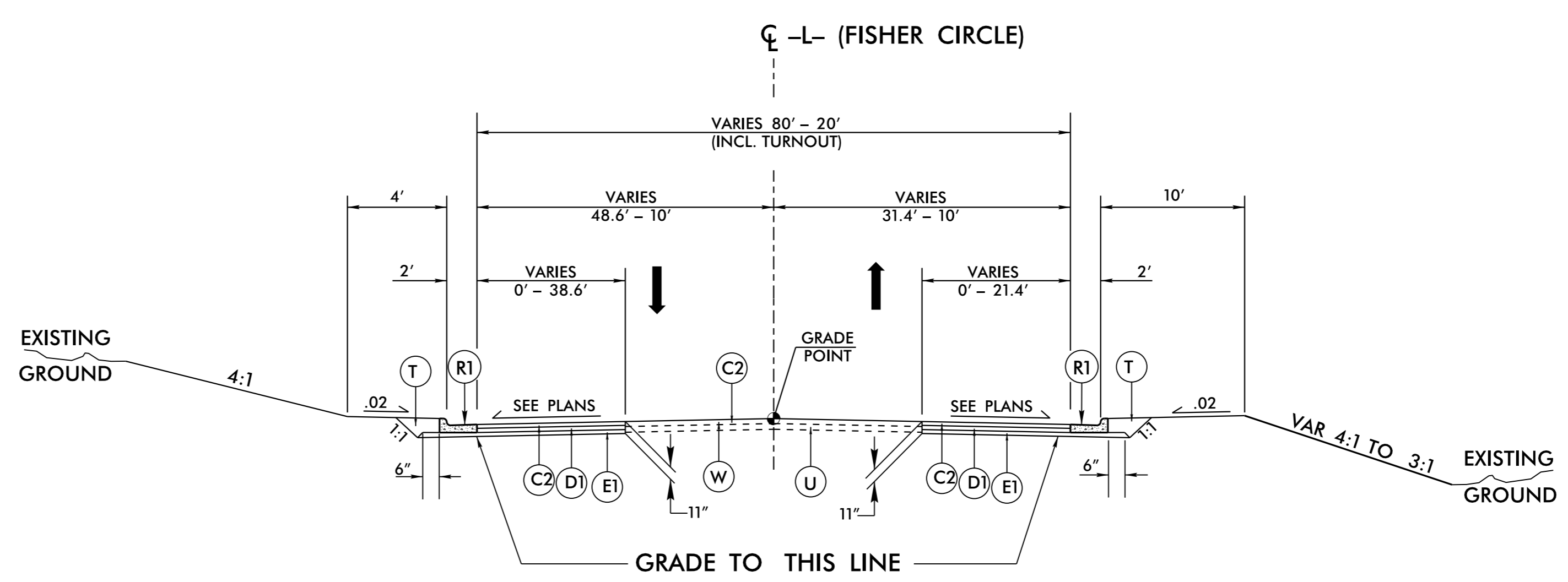
NOTE: PAVEMENT EDGE SLOPES ARE 1:1 UNLESS SHOWN OTHERWISE.



TYPICAL SECTION NO. 3

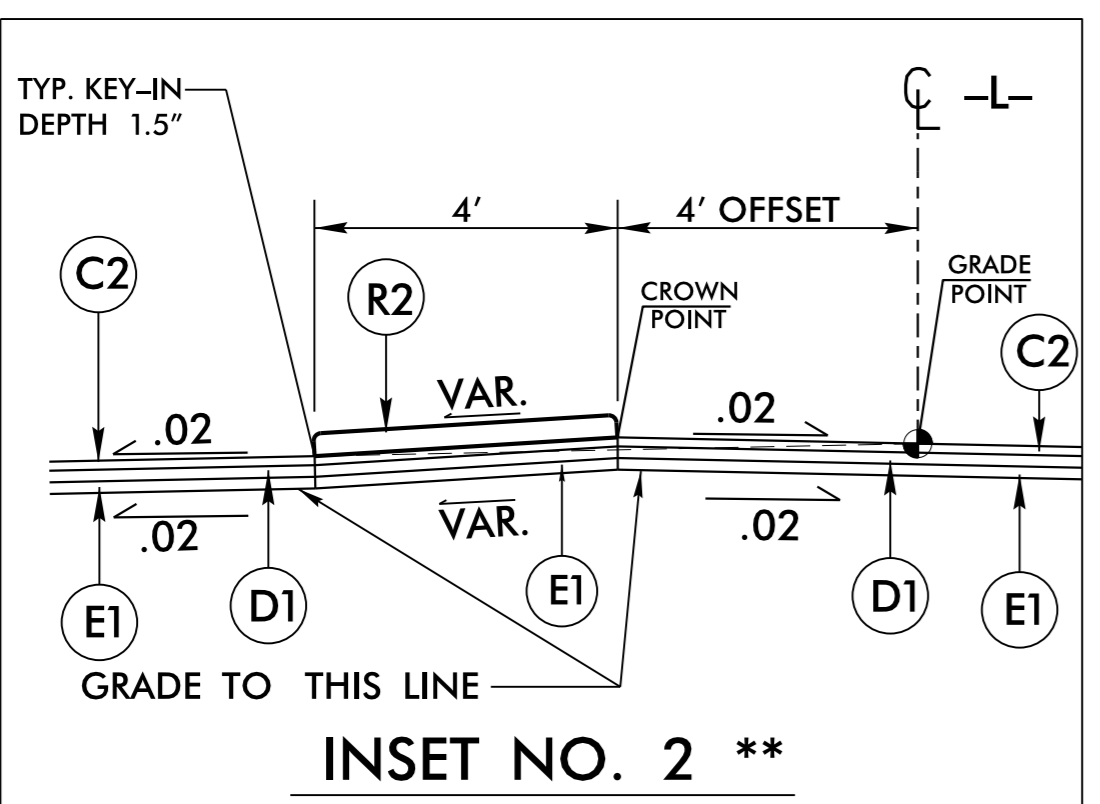
PROJECT REFERENCE NO. U-5305	SHEET NO. 2A-2
ROADWAY DESIGN ENGINEER SEAL 014571 JAMES A. SPEER	PAVEMENT DESIGN ENGINEER SEAL 022896 CLAYTON S. MORRISON
DocuSigned by: James Speer 3/4/2015	DocuSigned by: Clark S. Morrison 2015

USE TYPICAL SECTION NO. 3 AS FOLLOWS
 -L- STA. 14+66.93 TO STA 19+41.00
 *-L- STA. 19+41.00 TO STA 21+17.64
 **SEE INSET NO. 2 AND PLANS FOR ISLAND LOCATIONS



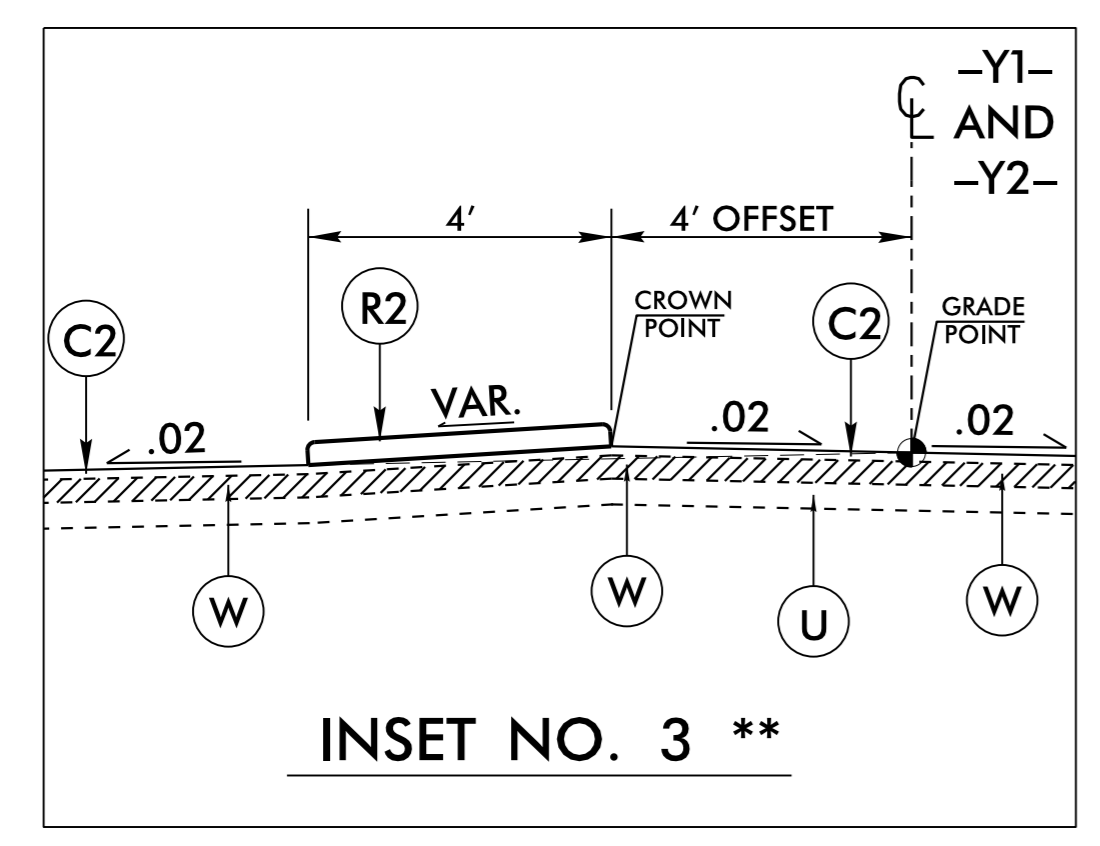
TYPICAL SECTION NO. 4

USE TYPICAL SECTION NO. 4 AS FOLLOWS
 -L- STA. 21+57.66 TO STA 22+68.54
 NOTE: RESURFACE EXISTING PAVEMENT WITH C2
 -L- STA 22+68.54 TO STA 23+15.00
 NOTE: MILL AND RESURFACE WITH V2 AND C2
 -L- STA 23+15.00 TO STA 23+40.00



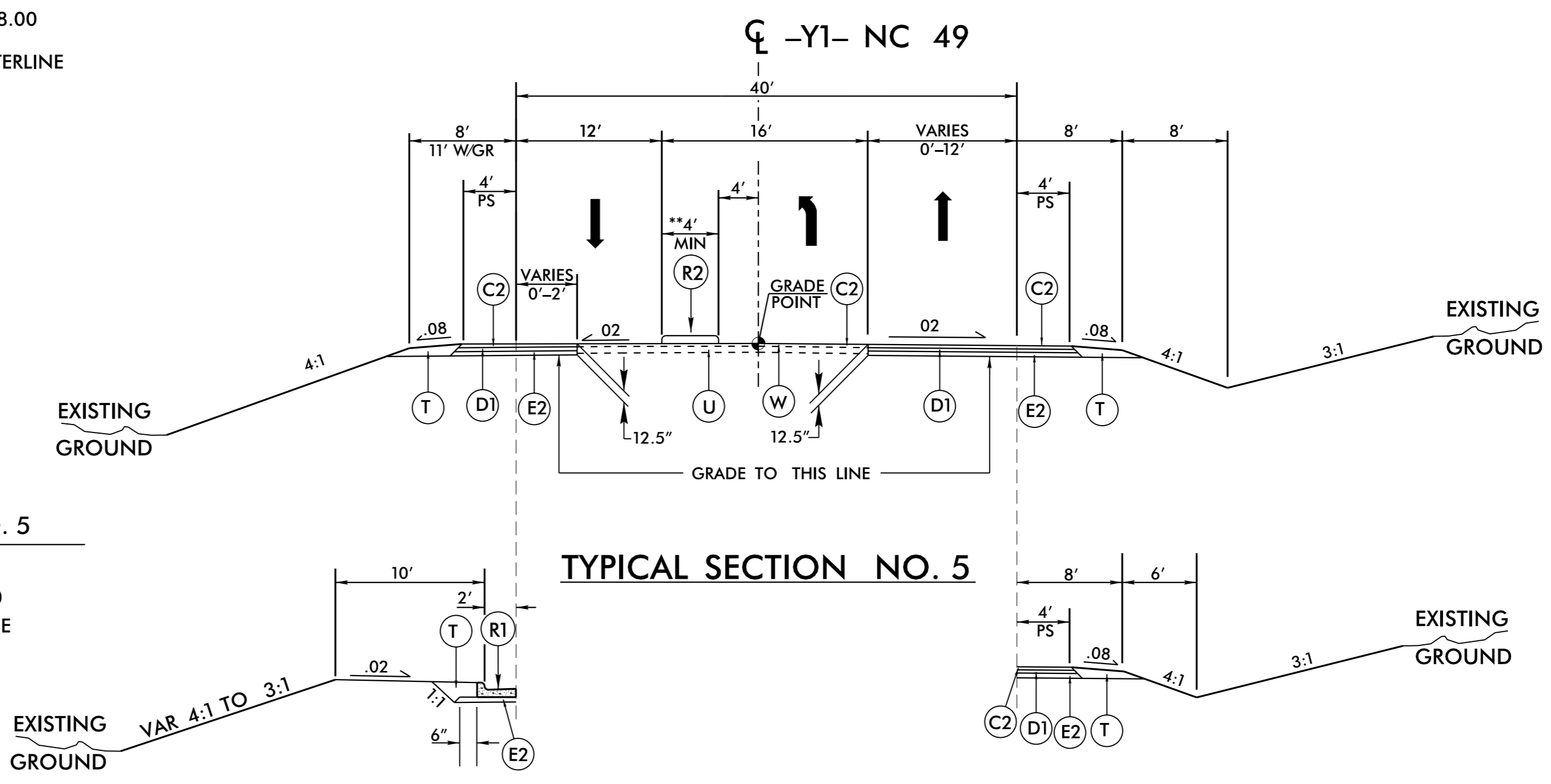
INSET NO. 2 **

USE WITH TYPICAL SECTION NO. 3
 *-L- STA. 15+20.00 TO STA 16+80.00
 -L- STA. 19+40.00 TO STA 20+58.00
 *ISLAND LOCATED RIGHT OF CENTERLINE



INSET NO. 3 **

USE WITH TYPICAL SECTION NO. 5
 *-Y1- STA. 10+78.81 TO STA 12+78.81
 -Y1- STA. 19+96.00 TO STA 22+74.00
 *ISLAND LOCATED RIGHT OF CENTERLINE



TYPICAL SECTION NO. 5

USE TYPICAL SECTION NO. 5 AS FOLLOWS
 -Y1- STA. 10+80.00 TO STA 21+69.00
 **SEE INSET NO. 3 AND PLANS FOR ISLAND LOCATIONS

NOTE: USE 6' DITCH WIDTH FOR DRAINAGE
 -Y1- STA 11+70 TO STA 13+25.00 RT
 NOTE: INSTALL CURB AND GUTTER
 -Y1- STA 20+75.00 TO STA 21+69.00 LT

NOTE: MILL AND RESURFACE WITH V2 AND C2
 -Y1- STA 10+55.00 TO STA 10+80.00

04-MAR-2015 08:56 U-5305_PdJ_tjy.dgn