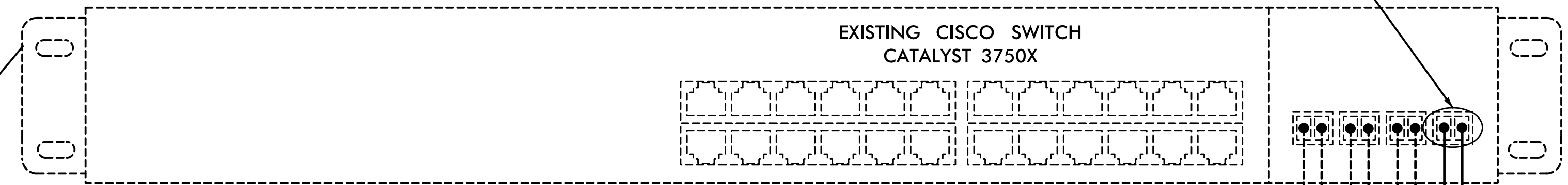


HUB #4 EQUIPMENT RACK
FRONT VIEW



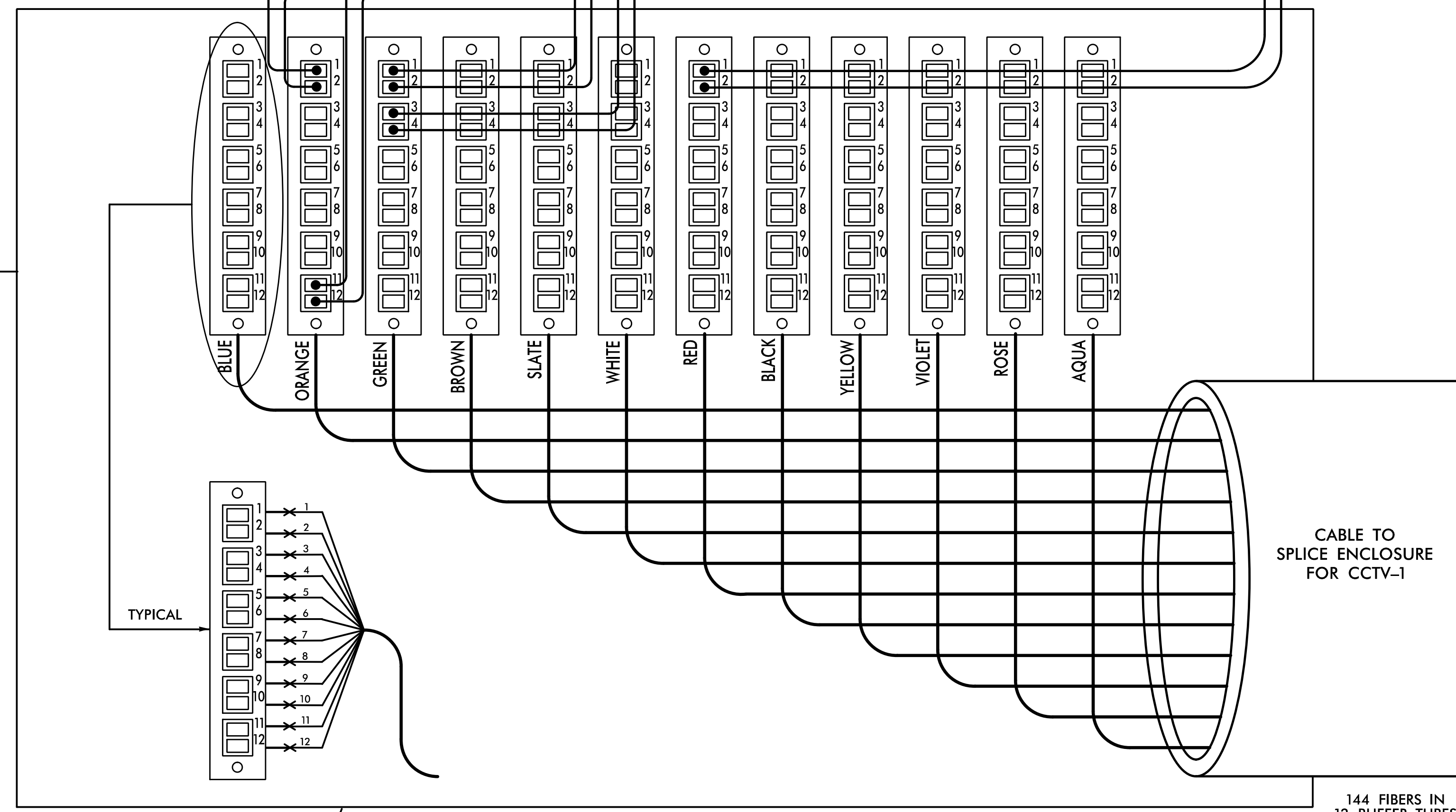
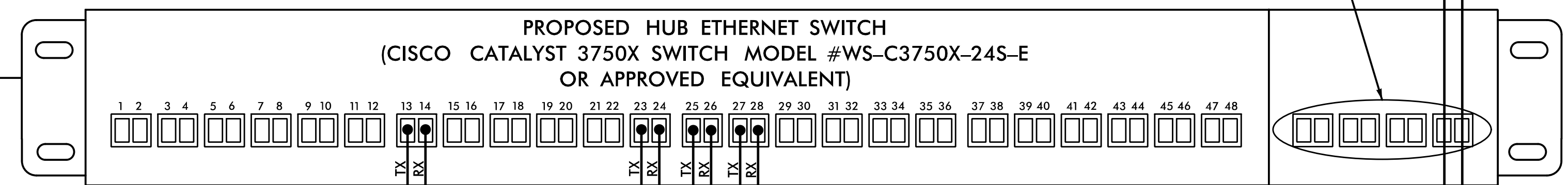
NOTES:

1. INSTALL CROSS-CONNECT CABLES FOR BOTH POWER AND DATA BETWEEN THE EXISTING AND PROPOSED SWITCHES ACCORDING TO THE MANUFACTURER'S RECOMMENDATIONS.
2. INSTALL 24 SFP 1000 BASE-FX OPTICAL TRANSCEIVER MODULES WITH 'LC' PORTS.
3. INSTALL FIBER-OPTIC JUMPERS AS SHOWN WITH 'LC' CONNECTORS AT BOTH ENDS.
4. DO NOT DISTURB ANY EXISTING JUMPERS.

EXISTING FIBER-OPTIC JUMPERS WITH 'LC' CONNECTORS

INSTALL FOUR (4) GIGABIT TRANSCEIVER MODULES WITH 'LC' PORTS

INSTALL FIBER-OPTIC JUMPER PAIR WITH 'LC' CONNECTORS TO CONNECT HUB #5 SWITCH WITH HUB #4 SWITCH



144-FIBER INTERCONNECT CENTER WITH PATCH PANELS AND 'LC' PORTS

COLOR CODE		LEGEND	
TIA/EIA 598-C			
(1) BLUE	(7) RED	X = NEW FUSION SPlice INDIVIDUAL FIBER	
(2) ORANGE	(8) BLACK	● = EXISTING FUSION SPlice	
(3) GREEN	(9) YELLOW	C = CAP AND SEAL	
(4) BROWN	(10) VIOLET	EXPRESS = EXPRESS ENTIRE BUFFER TUBE THROUGH WITHOUT CUTTING	
(5) SLATE	(11) ROSE	BUFFER SPlice = SPlice ALL FIBERS IN BUFFER TUBE COLOR TO COLOR	
(6) WHITE	(12) AQUA		

- NOTES**
1. UNUSED FIBERS LEFT COILED AND STORED IN SPlice TRAY.
 2. UNUSED BUFFER TUBES LEFT COILED AND STORED IN SPlice ENCLOSURE.
 3. ETHERNET SWITCH TERMINATION CONFIGURATIONS ARE GENERIC. CONTRACTOR IS RESPONSIBLE FOR DETERMINING/ENSURING PROPER TERMINATION.

<p>HNTB NORTH CAROLINA, P.C. 343 E. Six Forks Road, Suite 200 Raleigh, North Carolina 27609 NC License No: C-1554</p>	<p>Plans Prepared for:</p>		<p>HUB #4 FIBER-OPTIC SPlice DETAIL</p> <p>DIVISION 10 MECKLENBURG CO. CHARLOTTE</p> <p>PLAN DATE: FEBRUARY 2015 REVIEWED BY: A.D. KLINGSIEK</p> <p>PREPARED BY: T.R. TERRELL REVIEWED BY: H.L. WINSTEAD</p>							
	<p>SCALE</p> <p>NONE</p>	<p>REVISIONS</p> <table border="1"> <thead> <tr> <th>NO.</th> <th>DATE</th> <th>INIT.</th> <th>DATE</th> </tr> </thead> <tbody> <tr> <td> </td> <td> </td> <td> </td> <td> </td> </tr> </tbody> </table>			NO.	DATE	INIT.	DATE		
NO.	DATE	INIT.	DATE							