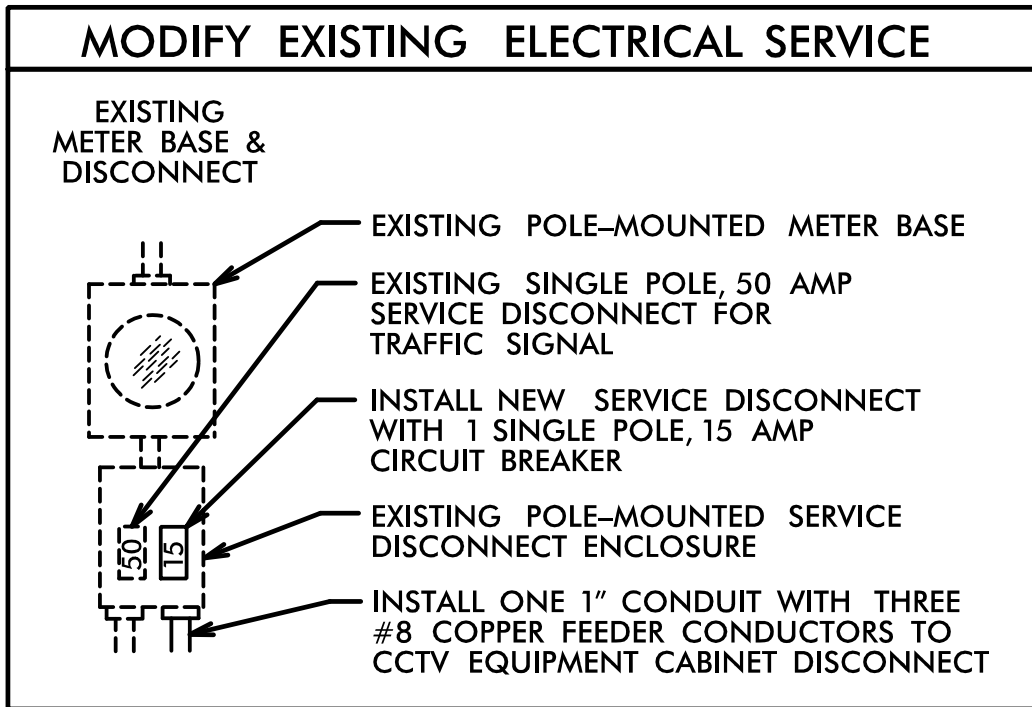


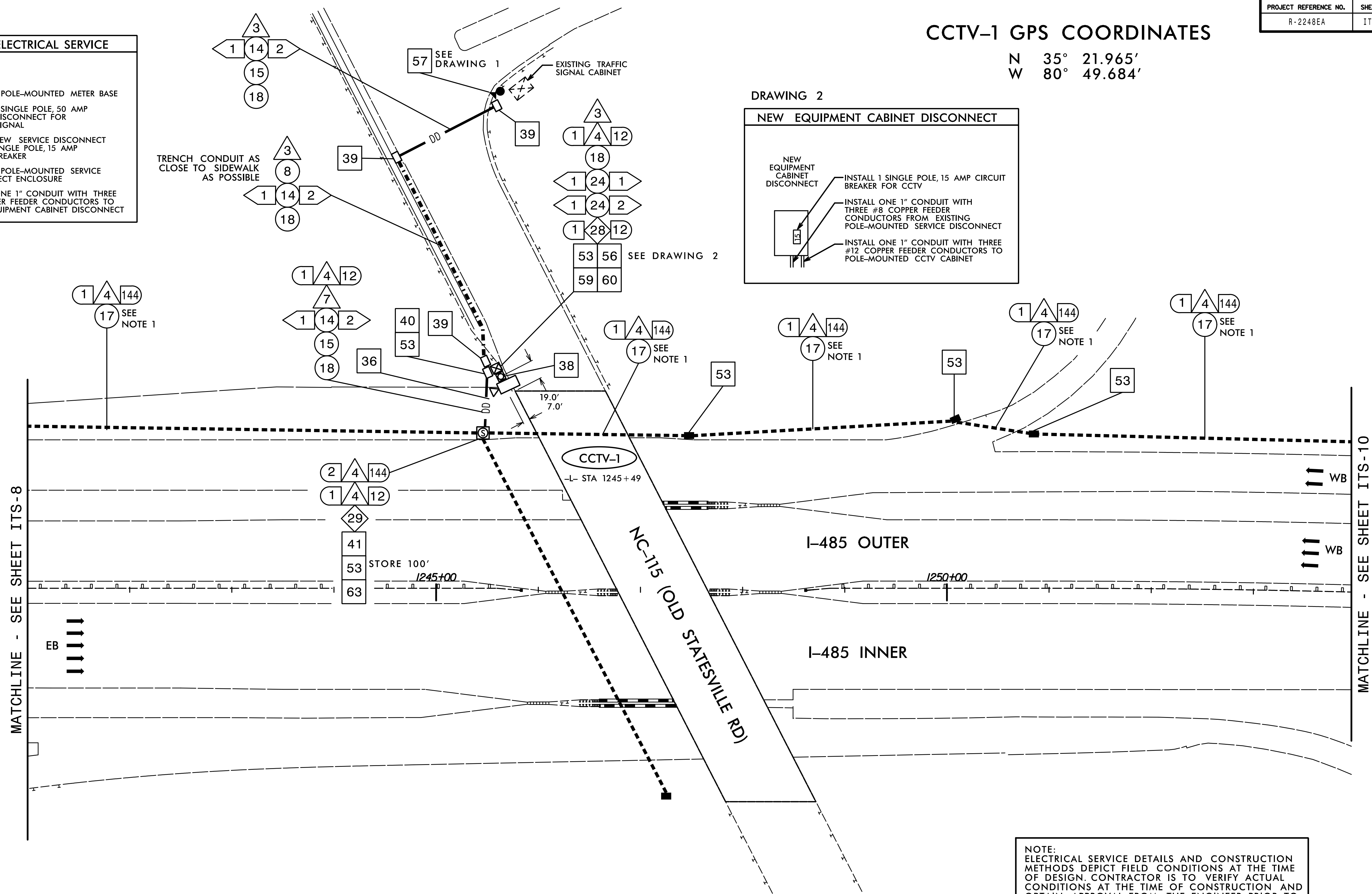
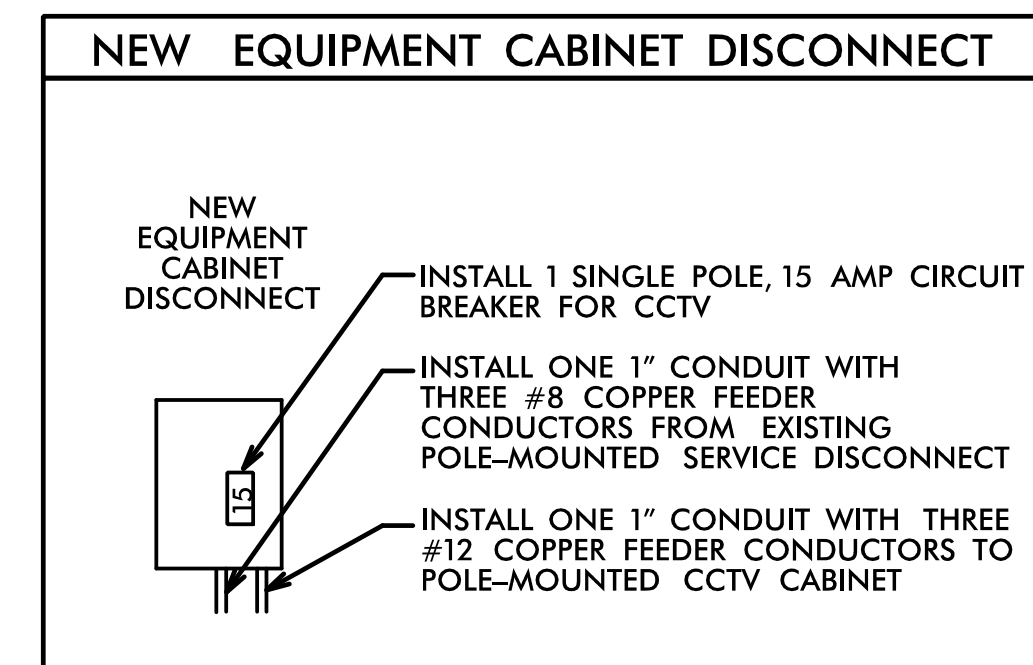
DRAWING 1



CCTV-1 GPS COORDINATES

N 35° 21.965'
W 80° 49.684'

DRAWING 2

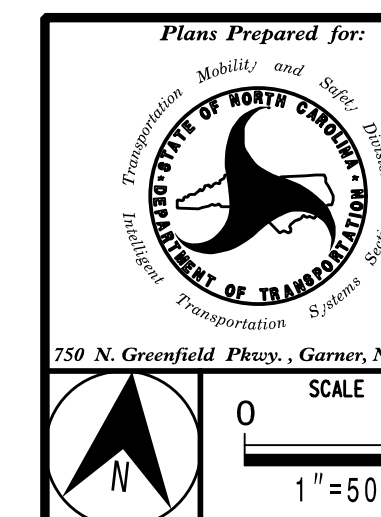


NOTES:

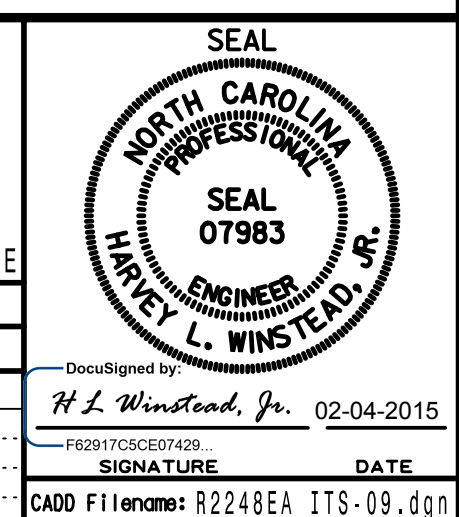
- INSTALL FIBER-OPTIC CABLE INTO THE EXISTING BLACK DUCT.
- CONTACT THE REGIONAL ITS ENGINEER AT (704) 347-6601 TO CONFIRM THE LOCATION OF THE CCTV.
- MOUNT THE CCTV CAMERA 45' ABOVE GRADE.
- INSTALL A LEVEL CONCRETE TECHNICIAN PAD MEASURING A MINIMUM OF 4 INCHES THICK, 24 INCHES WIDE AND 36 INCHES LONG AT THE FRONT DOOR OF THE CCTV EQUIPMENT CABINET. SEE TYPICAL DETAILS SHEET.
- CONTACT CHARLES ABEL (CITY OF CHARLOTTE) AT (704) 336-3945 TO COORDINATE ANY TRAFFIC SIGNAL SERVICE MODIFICATIONS.

NOTE: ELECTRICAL SERVICE DETAILS AND CONSTRUCTION METHODS DEPICT FIELD CONDITIONS AT THE TIME OF DESIGN. CONTRACTOR IS TO VERIFY ACTUAL CONDITIONS AT THE TIME OF CONSTRUCTION AND OBTAIN APPROVAL FROM THE ENGINEER PRIOR TO MAKING ANY CHANGES.

HNTB HNTB NORTH CAROLINA, P.C.
343 E. Six Forks Road, Suite 200
Raleigh, North Carolina 27609
NC License No: C-1554



Plans Prepared for: TRANSPORTATION MOBILITY AND SAFETY DIVISION DEPARTMENT OF TRANSPORTATION 250 N. Greenfield Place, Garner, NC 27529	
CABLE ROUTING PLAN	
DIVISION 10 MECKLENBURG CO. CHARLOTTE	
PLAN DATE: FEBRUARY 2015	REVIEWED BY: A.D. KLINSIEK
PREPARED BY: T.R. TERRELL	REVIEWED BY: H.L. WINSTEAD
REVISIONS	INIT. DATE



DocuSigned by:
H.L. Winstead, Jr. 02-04-2015
F82917C5E07429
SIGNATURE DATE
CADD File Name: R2248EA ITS-09.dgn