

NOTES: ANY DEVIATION FROM OPTIONS GIVEN WILL REQUIRE PRIOR APPROVAL BY ENGINEER.

ADDITIONAL EROSION CONTROL DEVICES MAY NEED TO BE INSTALLED AS DIRECTED BY THE ENGINEER.

# EROSION CONTROL PLAN

PROJECT REFERENCE NO. W-5206AG	SHEET NO. EC-05/CONST.04
RW SHEET NO.	
ROADWAY DESIGN ENGINEER	HYDRAULICS ENGINEER
<b>PRELIMINARY PLANS</b> DO NOT USE FOR CONSTRUCTION	

PLANS PREPARED BY:  
**PARSONS**  
RALEIGH, NORTH CAROLINA, (919) 854-1345  
NC LICENSE NO. F-0246  
FOR NORTH CAROLINA DEPT. OF TRANSPORTATION

19+40.92  
 $\Delta = 46' 41" 03.0" (RT)$   
 $D = 114' 35" 29.6"$   
 $L = 40.74'$   
 $T = 21.58'$   
 $R = 50.00'$

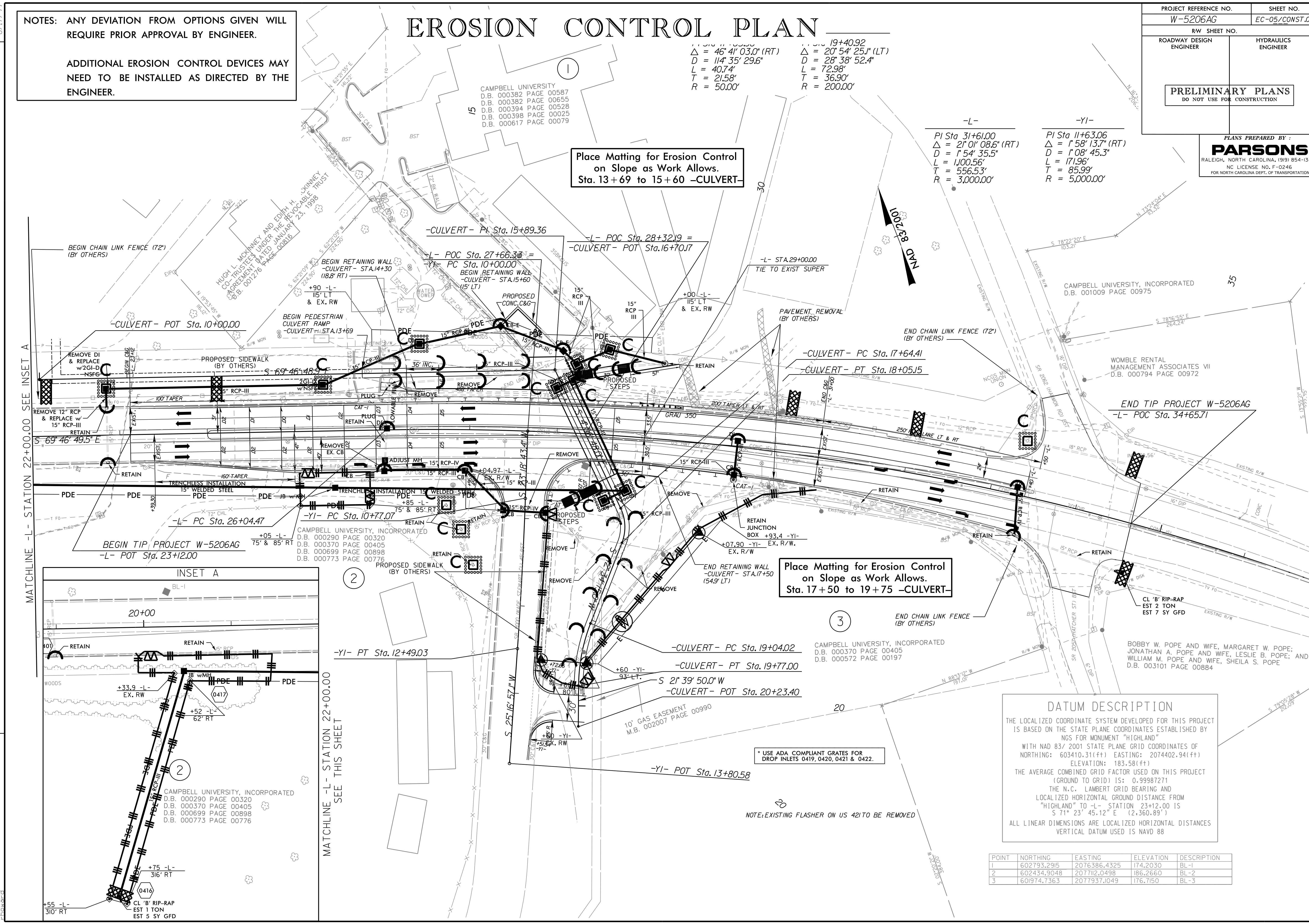
19+40.92  
 $\Delta = 20' 54" 25.1" (LT)$   
 $D = 28' 38" 52.4"$   
 $L = 72.98'$   
 $T = 36.90'$   
 $R = 200.00'$

-L-  
 PI Sta 31+61.00  
 $\Delta = 2' 01' 08.6" (RT)$   
 $D = 1' 54' 35.5"$   
 $L = 1,000.56'$   
 $T = 556.53'$   
 $R = 3,000.00'$

-YI-  
 PI Sta 11+63.06  
 $\Delta = 1' 58' 13.7" (RT)$   
 $D = 1' 08' 45.3"$   
 $L = 171.96'$   
 $T = 85.99'$   
 $R = 5,000.00'$

Place Matting for Erosion Control on Slope as Work Allows.  
Sta. 13+69 to 15+60 -CULVERT-

Place Matting for Erosion Control on Slope as Work Allows.  
Sta. 17+50 to 19+75 -CULVERT-

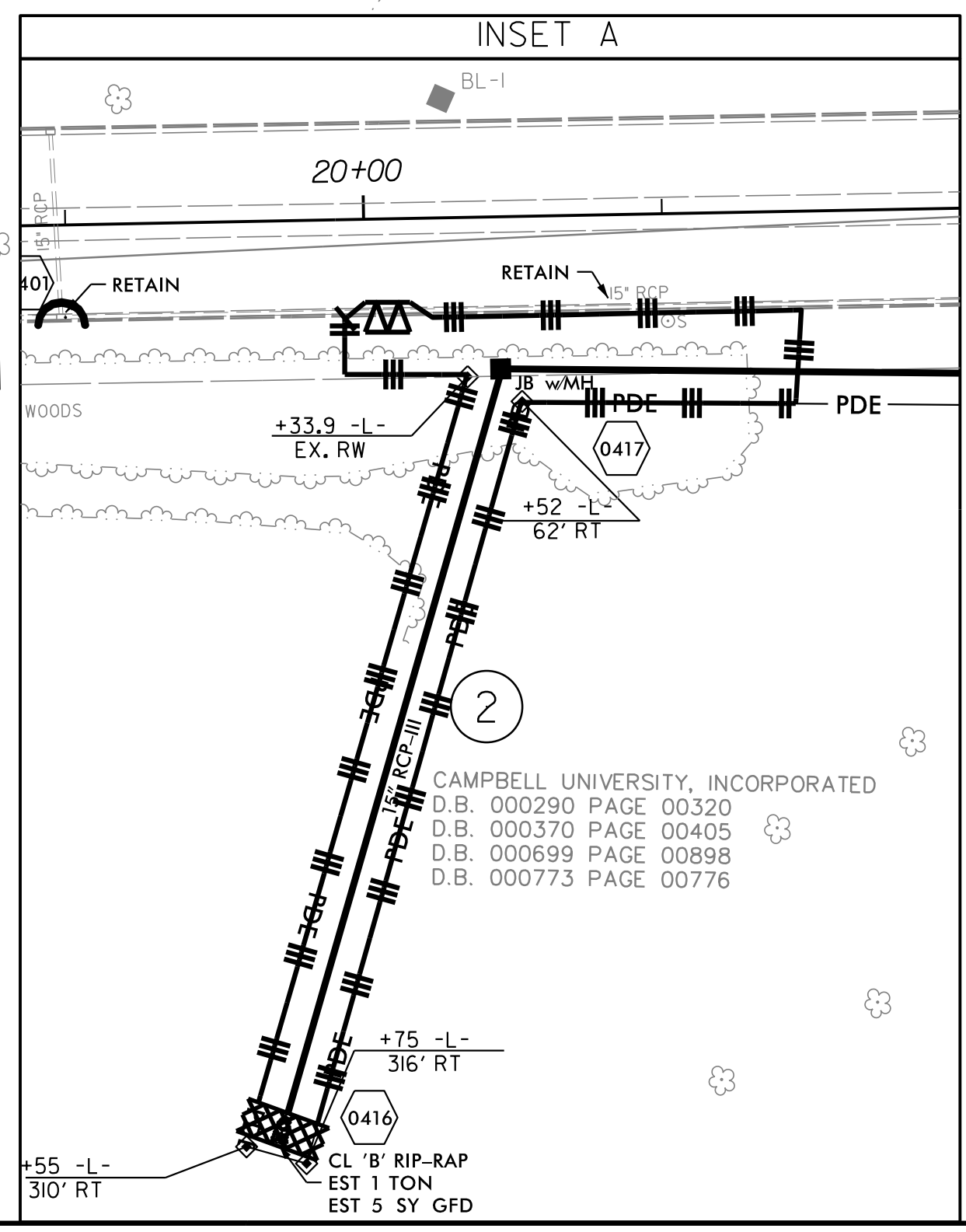


MATCHLINE -L- STATION 22+00.00 SEE INSET A

MATCHLINE -L- STATION 22+00.00 SEE THIS SHEET

10/24/2014 W-5206AG-EC.PSH.05.dgn

REVISIONS



**DATUM DESCRIPTION**

THE LOCALIZED COORDINATE SYSTEM DEVELOPED FOR THIS PROJECT IS BASED ON THE STATE PLANE COORDINATES ESTABLISHED BY NGS FOR MONUMENT "HIGHLAND" WITH NAD 83/ 2001 STATE PLANE GRID COORDINATES OF NORTHING: 603410.31(ft) EASTING: 2074402.94(ft) ELEVATION: 183.58(ft)

THE AVERAGE COMBINED GRID FACTOR USED ON THIS PROJECT (GROUND TO GRID) IS: 0.9998721

THE N.C. LAMBERT GRID BEARING AND LOCALIZED HORIZONTAL GROUND DISTANCE FROM "HIGHLAND" TO -L- STATION 23+12.00 IS S 71° 23' 45.12" E (2,360.89')

ALL LINEAR DIMENSIONS ARE LOCALIZED HORIZONTAL DISTANCES VERTICAL DATUM USED IS NAVD 88

POINT	NORTHING	EASTING	ELEVATION	DESCRIPTION
1	602793.2915	2076386.4325	174.2030	BL-1
2	602434.9048	207712.0498	186.2660	BL-2
3	601974.7363	2077937.1049	176.7150	BL-3

\* USE ADA COMPLIANT GRATES FOR DROP INLETS 0419, 0420, 0421 & 0422.

NOTE: EXISTING FLASHER ON US 4210 TO BE REMOVED