

EROSION CONTROL PLAN

NOTES: ANY DEVIATION FROM OPTIONS GIVEN WILL REQUIRE PRIOR APPROVAL BY ENGINEER.

ADDITIONAL EROSION CONTROL DEVICES MAY NEED TO BE INSTALLED AS DIRECTED BY THE ENGINEER.

NOTE: PLACE TEMPORARY ROCK SEDIMENT DAMS TYPE - B AND TEMPORARY ROCK SILT CHECKS TYPE - A AT DRAINAGE OUTLETS.

NOTE: PERIMETER EROSION CONTROL MEASURES SHALL BE INSTALLED DURING CLEARING AND GRUBBING PHASE.

CLEARING AND GRUBBING
EROSION CONTROL FOR
CONSTRUCTION SHEET 04

PROJECT REFERENCE NO. W-5206AG	SHEET NO. EC-04/CONST.04
ROADWAY DESIGN ENGINEER	HYDRAULICS ENGINEER
PRELIMINARY PLANS DO NOT USE FOR CONSTRUCTION	

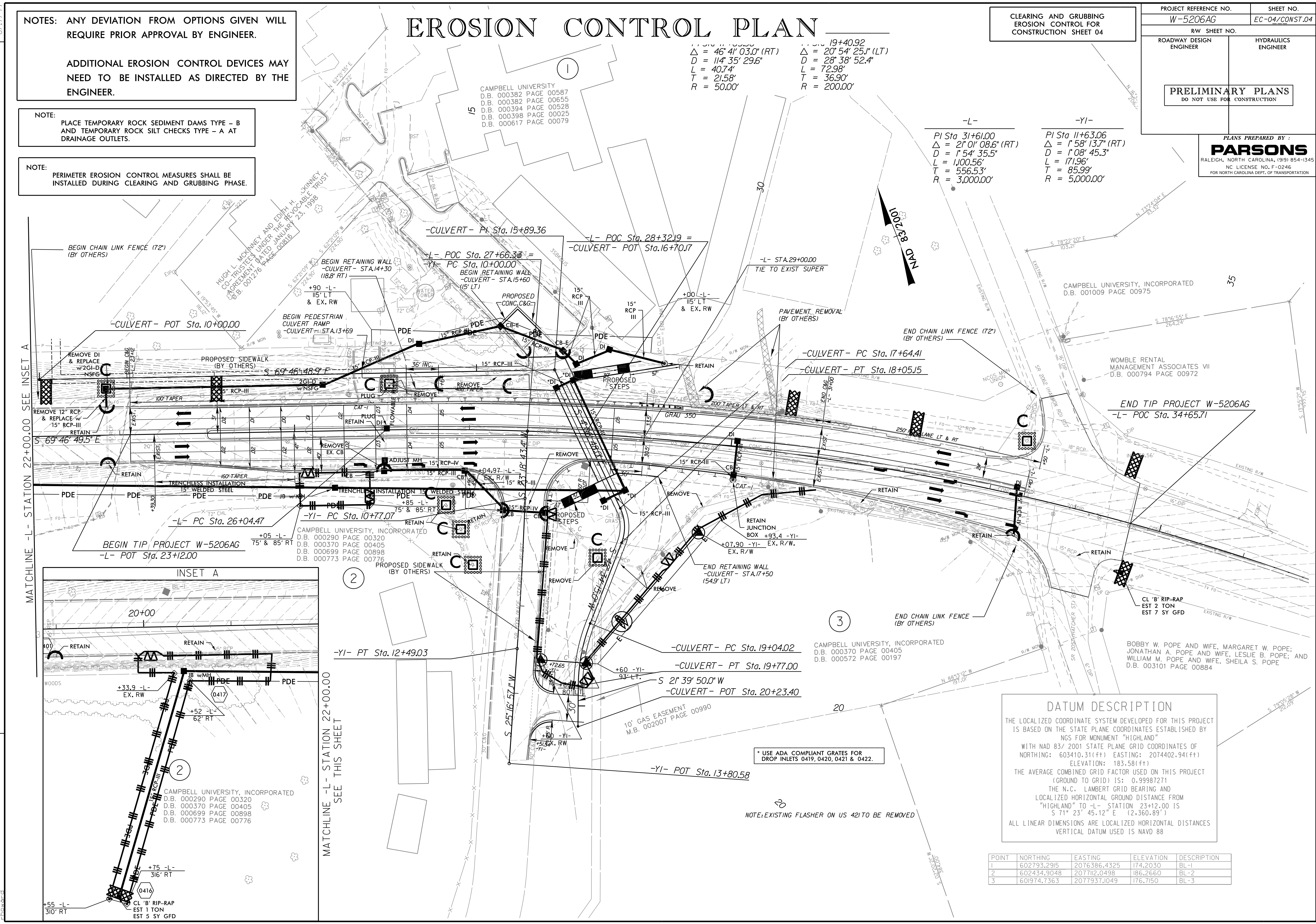
PLANS PREPARED BY:
PARSONS
RALEIGH, NORTH CAROLINA, (919) 854-1345
NC LICENSE NO. F-0246
FOR NORTH CAROLINA DEPT. OF TRANSPORTATION

19+40.92
 $\Delta = 46' 41" 03.0'$ (RT)
 $D = 114' 35" 29.6'$
 $L = 40.74'$
 $T = 21.58'$
 $R = 50.00'$

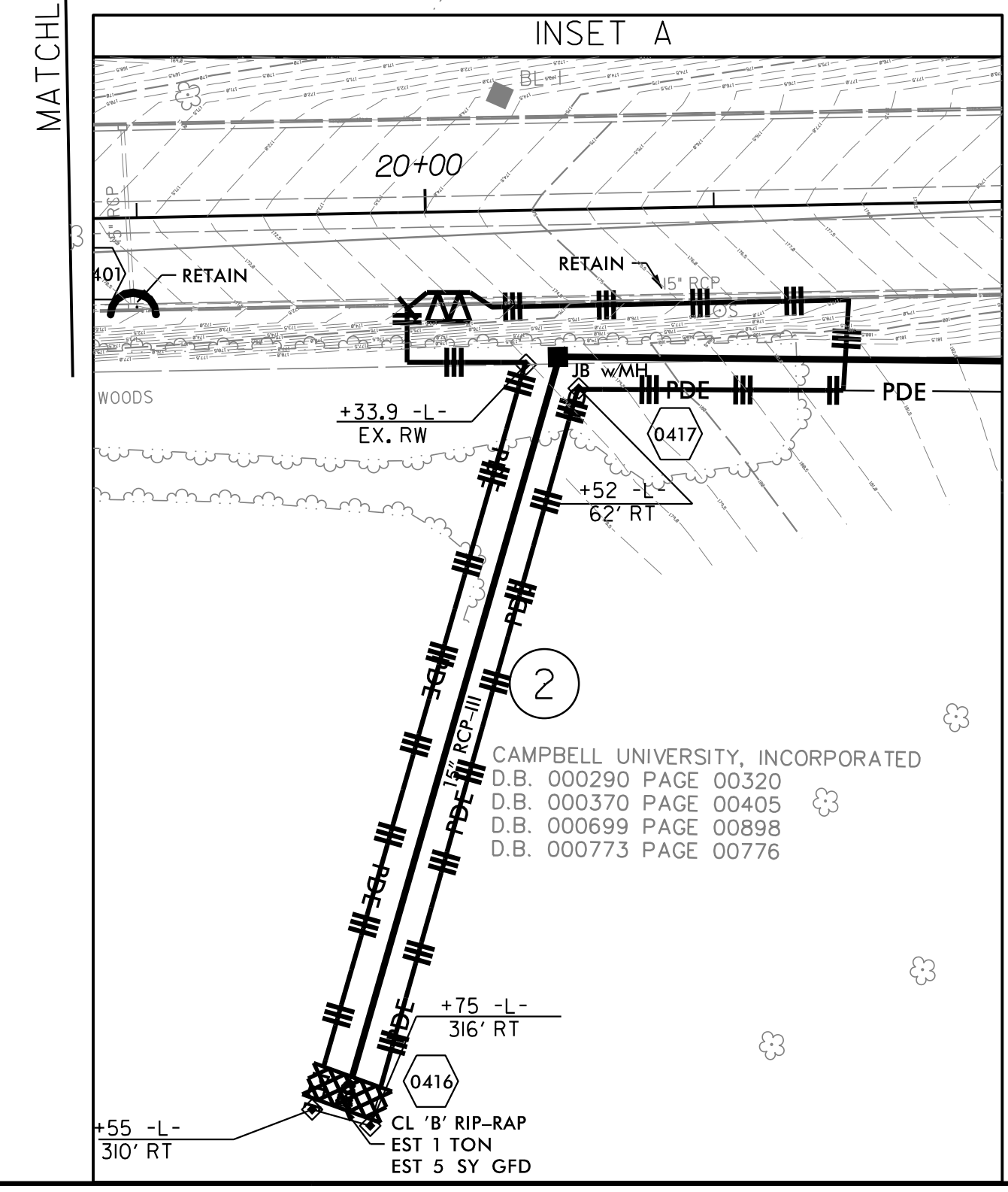
20' 54' 25.1" (LT)
 $D = 28' 38" 52.4'$
 $L = 72.98'$
 $T = 36.90'$
 $R = 200.00'$

-L-
 PI Sta 31+61.00
 $\Delta = 2' 01" 08.6'$ (RT)
 $D = 1' 54" 35.5'$
 $L = 1,000.56'$
 $T = 556.53'$
 $R = 3,000.00'$

-YI-
 PI Sta 11+63.06
 $\Delta = 1' 58" 13.7'$ (RT)
 $D = 1' 08" 45.3'$
 $L = 171.96'$
 $T = 85.99'$
 $R = 5,000.00'$



MATCHLINE -L- STATION 22+00.00 SEE INSET A



MATCHLINE -L- STATION 22+00.00 SEE THIS SHEET

DATUM DESCRIPTION

THE LOCALIZED COORDINATE SYSTEM DEVELOPED FOR THIS PROJECT IS BASED ON THE STATE PLANE COORDINATES ESTABLISHED BY NGS FOR MONUMENT "HIGHLAND" WITH NAD 83/ 2001 STATE PLANE GRID COORDINATES OF NORTHING: 603410.31(ft) EASTING: 2074402.94(ft) ELEVATION: 183.58(ft)

THE AVERAGE COMBINED GRID FACTOR USED ON THIS PROJECT (GROUND TO GRID) IS: 0.99987271

THE N.C. LAMBERT GRID BEARING AND LOCALIZED HORIZONTAL GROUND DISTANCE FROM "HIGHLAND" TO -L- STATION 23+12.00 IS S 71° 23' 45.12" E (2,360.89')

ALL LINEAR DIMENSIONS ARE LOCALIZED HORIZONTAL DISTANCES VERTICAL DATUM USED IS NAVD 88

POINT	NORTHING	EASTING	ELEVATION	DESCRIPTION
1	602793.2915	2076386.4325	174.2030	BL-1
2	602434.9048	207712.0498	186.2660	BL-2
3	601974.7363	2077937.1049	176.7150	BL-3

* USE ADA COMPLIANT GRATES FOR DROP INLETS 0419, 0420, 0421 & 0422.

NOTE: EXISTING FLASHER ON US 4210 TO BE REMOVED

REVISIONS

10/24/2014 W-5206AG-EC.PSH.04.dgn