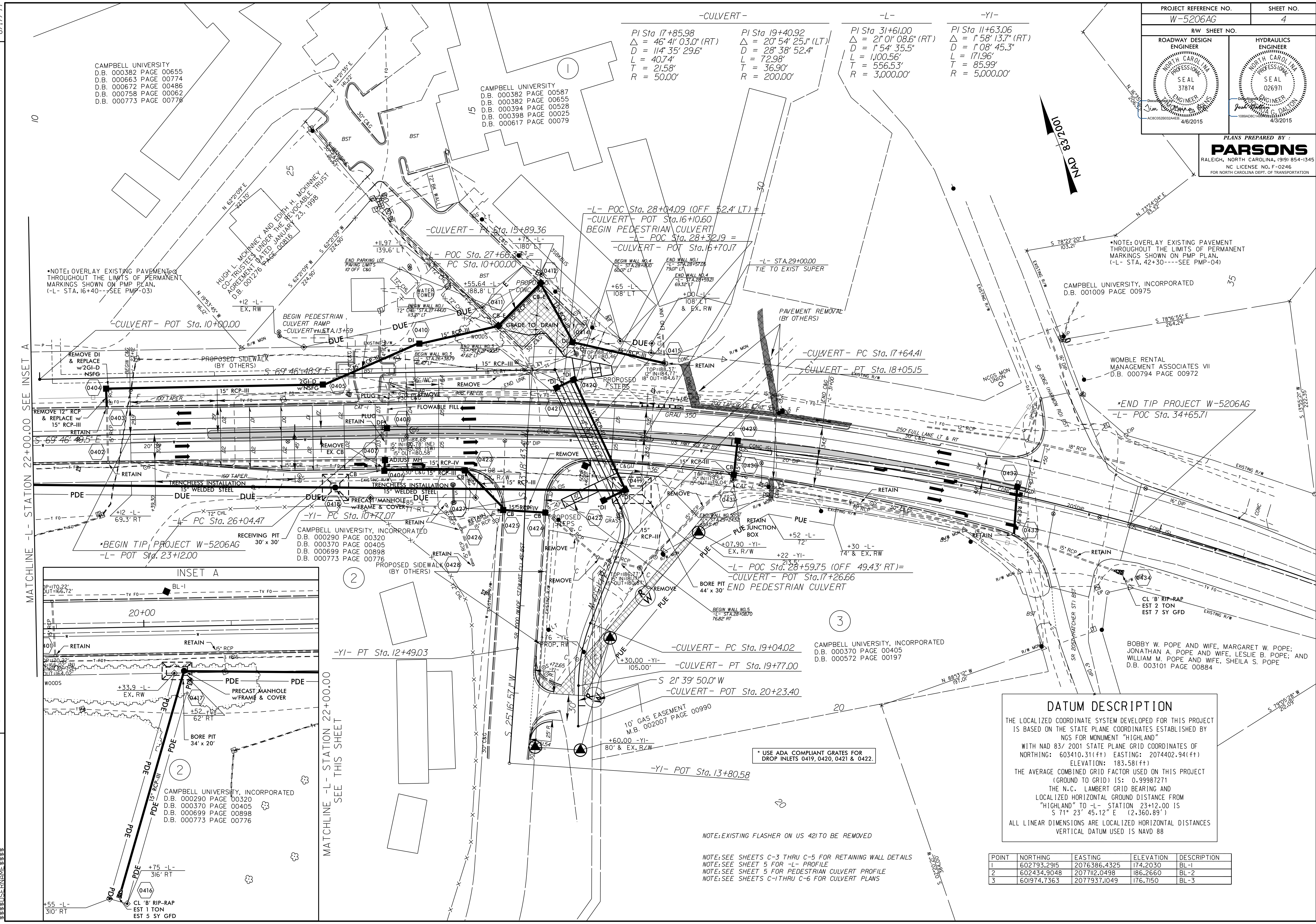


PROJECT REFERENCE NO. W-5206AG		SHEET NO. 4	
RW SHEET NO.			
ROADWAY DESIGN ENGINEER		HYDRAULICS ENGINEER	

PLANS PREPARED BY:
PARSONS
RALEIGH, NORTH CAROLINA, (919) 854-1345
NC LICENSE NO. F-0246
FOR NORTH CAROLINA DEPT. OF TRANSPORTATION

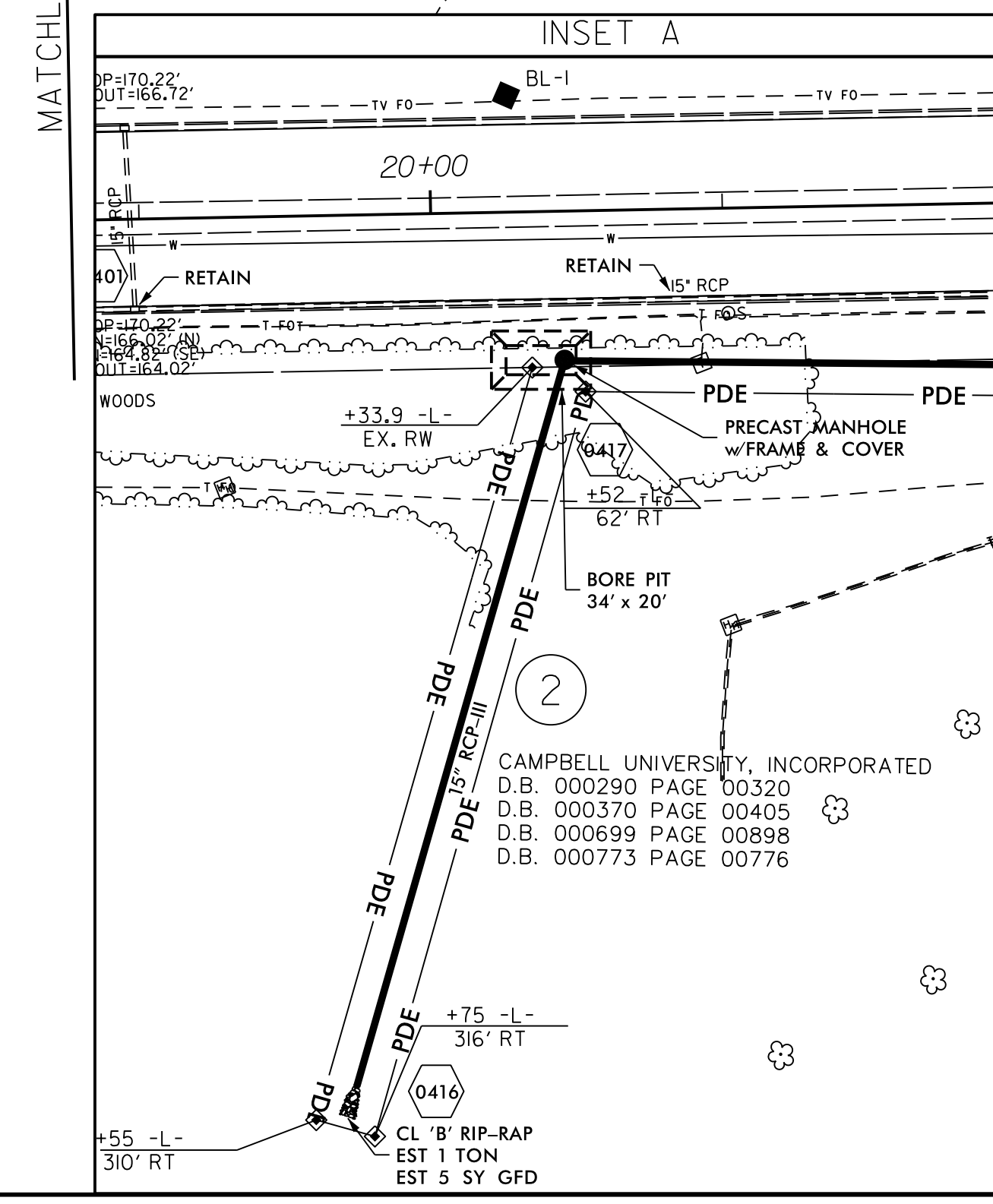


*NOTE: OVERLAY EXISTING PAVEMENT THROUGHOUT THE LIMITS OF PERMANENT MARKINGS SHOWN ON PMP PLAN. (-L- STA. 16+40---SEE PMP-03)

*NOTE: OVERLAY EXISTING PAVEMENT THROUGHOUT THE LIMITS OF PERMANENT MARKINGS SHOWN ON PMP PLAN. (-L- STA. 42+30---SEE PMP-04)

MATCHLINE -L- STATION 22+00.00 SEE INSET A

MATCHLINE -L- STATION 22+00.00 SEE THIS SHEET



-CULVERT-	-L-	-YI-
PI Sta 17+85.98 Δ = 46° 41' 03.0" (RT) D = 114' 35" 29.6" L = 40.74' T = 21.58' R = 50.00'	PI Sta 19+40.92 Δ = 20° 54' 25.1" (LT) D = 28' 38" 52.4" L = 72.98' T = 36.90' R = 200.00'	PI Sta 31+61.00 Δ = 21° 01' 08.6" (RT) D = 1' 54' 35.5" L = 1,100.56' T = 556.53' R = 3,000.00'
PI Sta 11+63.06 Δ = 1' 58' 13.7" (RT) D = 1' 08' 45.3" L = 171.96' T = 85.99' R = 5,000.00'		

*END TIP PROJECT W-5206AG
-L- POC Sta. 34+65.71

DATUM DESCRIPTION
THE LOCALIZED COORDINATE SYSTEM DEVELOPED FOR THIS PROJECT IS BASED ON THE STATE PLANE COORDINATES ESTABLISHED BY NGS FOR MONUMENT "HIGHLAND" WITH NAD 83/ 2001 STATE PLANE GRID COORDINATES OF NORTHING: 603410.31(±±) EASTING: 2074402.94(±±) ELEVATION: 183.58(±±)
THE AVERAGE COMBINED GRID FACTOR USED ON THIS PROJECT (GROUND TO GRID) IS: 0.99987271
THE N.C. LAMBERT GRID BEARING AND LOCALIZED HORIZONTAL GROUND DISTANCE FROM "HIGHLAND" TO -L- STATION 23+12.00 IS S 71° 23' 45.12" E (2,360.89')
ALL LINEAR DIMENSIONS ARE LOCALIZED HORIZONTAL DISTANCES VERTICAL DATUM USED IS NAVD 88

POINT	NORTHING	EASTING	ELEVATION	DESCRIPTION
1	602793.2915	2076386.4325	174.2030	BL-1
2	602434.9048	207712.0498	186.2660	BL-2
3	601974.7363	2077937.1049	176.7150	BL-3

NOTE: EXISTING FLASHER ON US 421 TO BE REMOVED
NOTE: SEE SHEETS C-3 THRU C-5 FOR RETAINING WALL DETAILS
NOTE: SEE SHEET 5 FOR -L- PROFILE
NOTE: SEE SHEET 5 FOR PEDESTRIAN CULVERT PROFILE
NOTE: SEE SHEETS C-1 THRU C-6 FOR CULVERT PLANS

REVISIONS

8/17/99

U:\W-5206AG\Drawings\W-5206AG_Rdy_PSH_S04.dgn