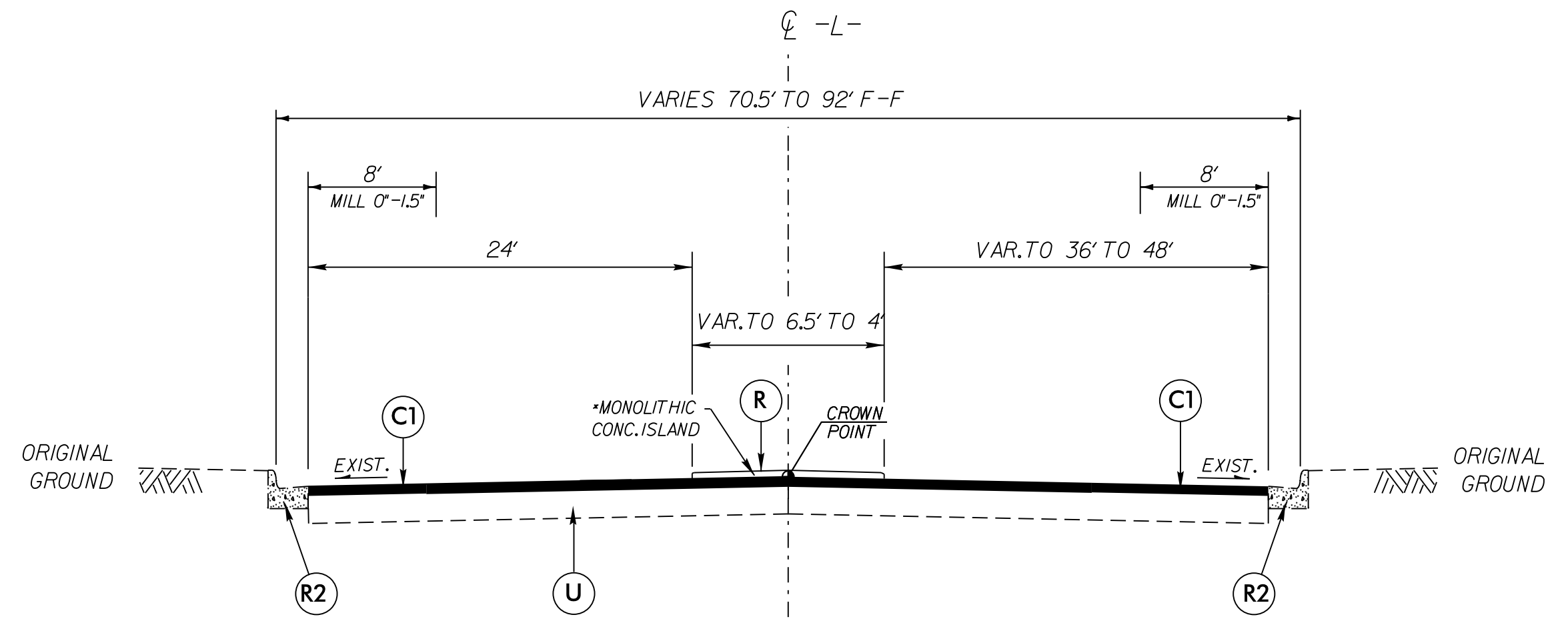


FINAL PAVEMENT SCHEDULE	
C1	PROP. APPROX. 1.5" ASPHALT CONCRETE SURFACE COURSE, TYPE S9.5C, AT AN AVERAGE RATE OF 168 LBS. PER SQ. YD.
C2	PROP. APPROX. 3" ASPHALT CONCRETE SURFACE COURSE, TYPE S9.5C, AT AN AVERAGE RATE OF 168 LBS. PER SQ. YD. IN EACH OF TWO LAYERS.
C3	PROP. VAR. DEPTH ASPHALT CONCRETE SURFACE COURSE, TYPE S9.5C, AT AN AVERAGE RATE OF 112 LBS. PER SQ. YD. PER 1" DEPTH. TO BE PLACED IN LAYERS NOT TO EXCEED 2" IN DEPTH.
D1	PROP. APPROX. 4" ASPHALT CONCRETE INTERMEDIATE COURSE, TYPE I19.0C, AT AN AVERAGE RATE OF 456 LBS. PER SQ. YD.
D2	PROP. VAR. DEPTH ASPHALT CONCRETE INTERMEDIATE COURSE, TYPE I19.0C, AT AN AVERAGE RATE OF 114 LBS. PER SQ. YD. PER 1" DEPTH. TO BE PLACED IN LAYERS NOT LESS THAN 2½" IN DEPTH OR GREATER THAN 4" IN DEPTH.
E1	PROP. APPROX. 4" ASPHALT CONCRETE BASE COURSE, TYPE B25.0C, AT AN AVERAGE RATE OF 456 LBS. PER SQ. YD.
E2	PROP. VAR. DEPTH ASPHALT CONCRETE BASE COURSE, TYPE B25.0C, AT AN AVERAGE RATE OF 114 LBS. PER SQ. YD. PER 1" DEPTH. TO BE PLACED IN LAYERS NOT LESS THAN 3" IN DEPTH OR GREATER THAN 5½" IN DEPTH.
R	PROP. 5" MONOLITHIC CONCRETE ISLAND (KEY-IN)
R1	PROPOSED 2'-6" CURB AND GUTTER
R2	EXISTING 2'-6" CURB AND GUTTER TO BE RETAINED
S	PROPOSED 4" CONCRETE SIDEWALK WITH WELDED WIRE MESH
T	EARTH MATERIAL.
U	EXISTING PAVEMENT.

NOTE: PAVEMENT EDGE SLOPES ARE 1:1 UNLESS SHOWN OTHERWISE.



TYPICAL SECTION NO. 3

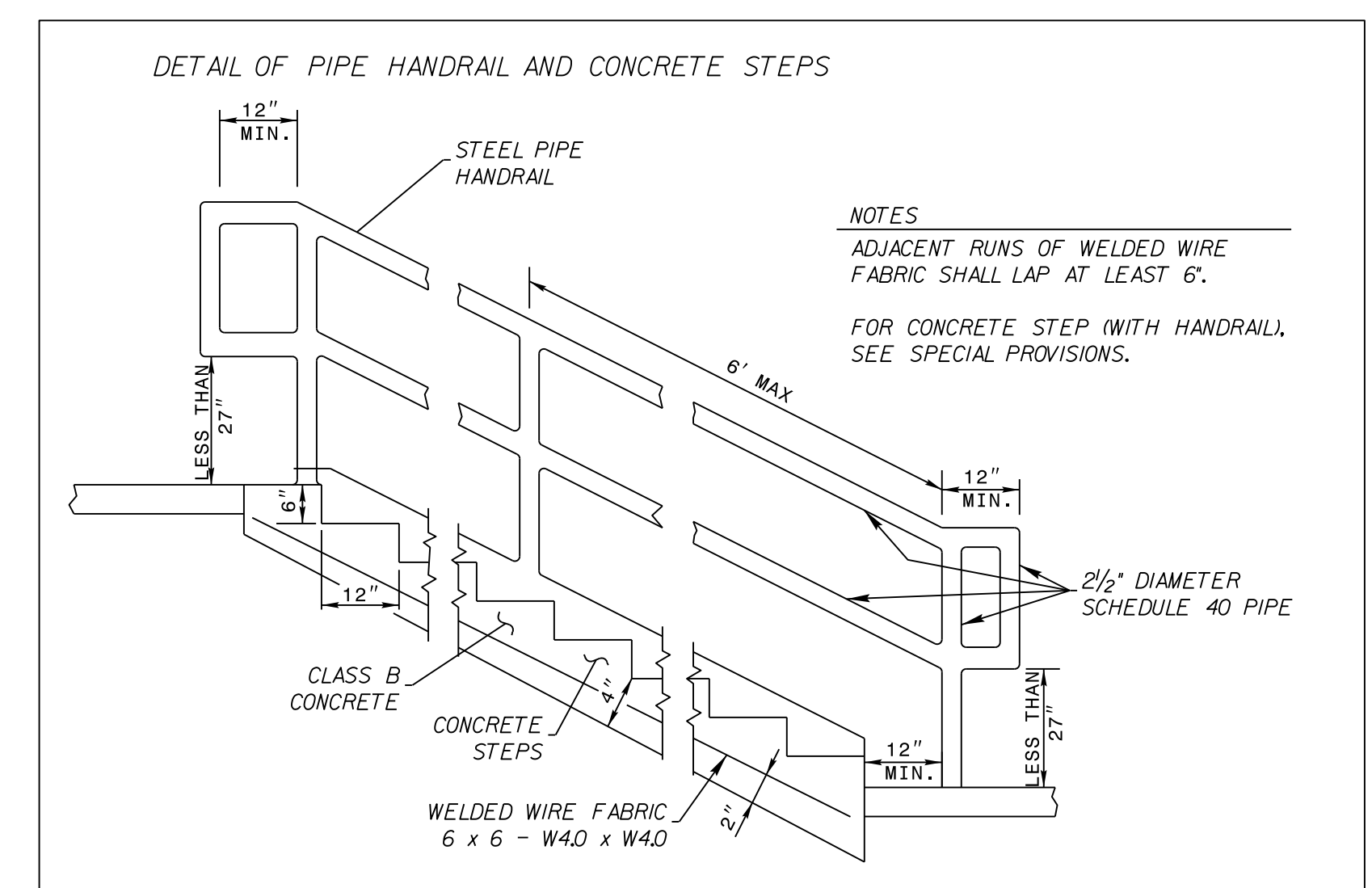
USE TYPICAL SECTION NO. 3

-L- STA. 31+00.00 TO STA. 34+65.71

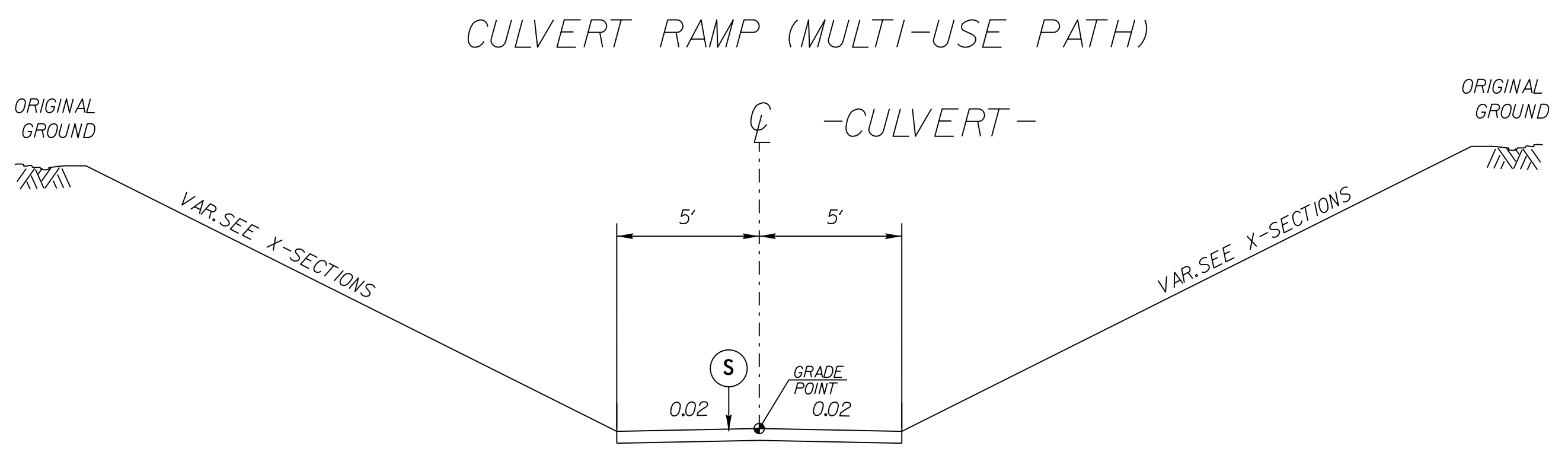
*NOTE: SEE PLAN VIEW FOR EXACT LOCATION OF MONOLITHIC ISLAND

**NOTE: OVERLAY EXISTING PAVEMENT WITH 1.5" S9.5C THROUGHOUT LIMITS OF PERMANENT MARKINGS SHOWN IN PMP PLAN. (-L- STA. 42+30 --- SEE PMP-04)

<small>PLANS PREPARED BY:</small> PARSONS <small>3940 CENTERVIEW DR. SUITE 211 RALEIGH, NORTH CAROLINA 27606 NC LICENSE NO. P-10246 FOR NORTH CAROLINA DEPT. OF TRANSPORTATION</small>	
PROJECT REFERENCE NO. W-5206AG	SHEET NO. 2A-2
RW SHEET NO.	
ROADWAY DESIGN ENGINEER <i>Jim [Signature]</i>	PAVEMENT DESIGN ENGINEER <i>Clark [Signature]</i>
<small>SEAL 37874 NORTH CAROLINA PROFESSIONAL ENGINEER 4/8/2015</small>	<small>SEAL 022896 NORTH CAROLINA PROFESSIONAL ENGINEER 4/8/2015</small>



NOTES
 ADJACENT RUNS OF WELDED WIRE FABRIC SHALL LAP AT LEAST 6".
 FOR CONCRETE STEP (WITH HANDRAIL), SEE SPECIAL PROVISIONS.



TYPICAL SECTION NO. 4

USE TYPICAL SECTION NO. 4

-CULVERT- STA. 13+69.00 TO STA. 16+10.60 (BEGIN CULVERT)
 -CULVERT- STA. 17+26.66 (END CULVERT) TO STA. 19+90.00

O:\APR-2015\JF42
 J:\W-5206AG\Roadway\Proj\W5206AG.Rdy-TYP-2A-2.dgn
 \$\$\$USERNAMF\$\$\$