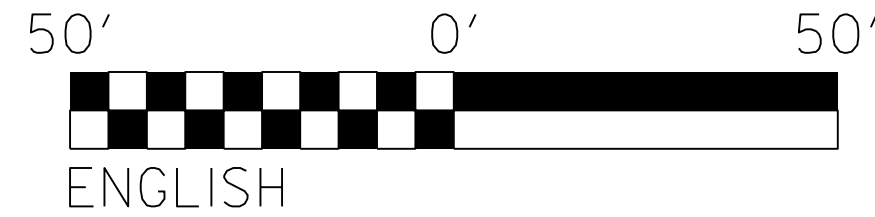


NOTES: ANY DEVIATION FROM OPTIONS GIVEN WILL REQUIRE PRIOR APPROVAL BY ENGINEER.
 ADDITIONAL EROSION CONTROL DEVICES MAY NEED TO BE INSTALLED AS DIRECTED BY THE ENGINEER.



-L-	-Y5-	-Y6-	-DRIVE 12-
PI Sta 147+28.94	PI Sta 11+77.72	PI Sta 10+65.65	PI Sta 10+17.70
$\Delta = 42' 25' 45.6''$ (RT)	$\Delta = 11' 59' 53.9''$ (LT)	$\Delta = 11' 45' 20.1''$ (LT)	$\Delta = 5' 29' 33.8''$ (RT)
D = 4' 46' 28.7"	D = 11' 27' 33.0"	D = 28' 38' 52.4"	D = 229' 10' 59.2"
L = 888.64'	L = 104.70'	L = 41.03'	L = 2.40'
T = 465.80'	T = 52.54'	T = 20.59'	T = 1.20'
R = 1,200.00'	R = 500.00'	R = 200.00'	R = 25.00'
R.O. = 220'			
SE = 0.08			

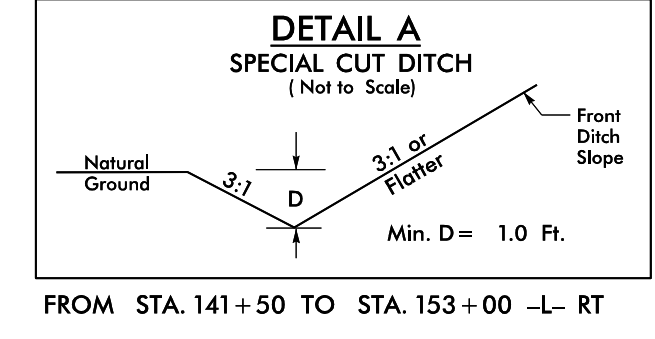
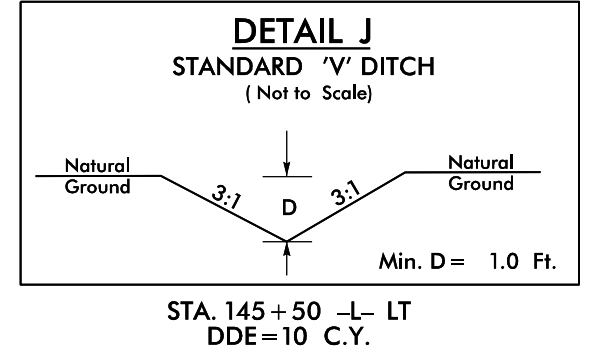
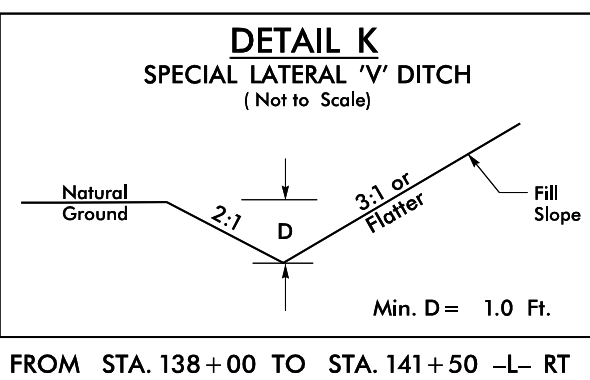
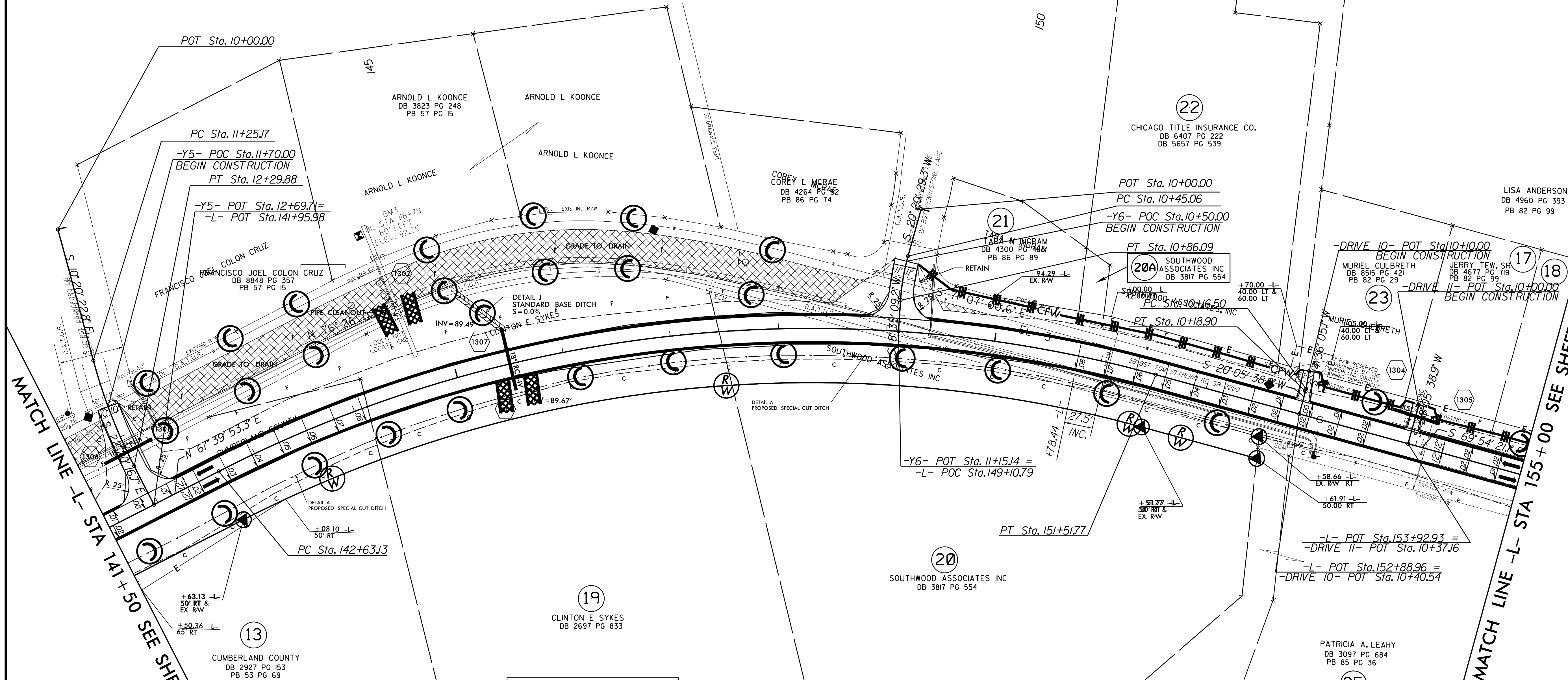
MI ENGINEERING
 1011 SCARAB DRIVE, SUITE 100
 RALEIGH, NC 27606
 (919) 851-6806
 FIRM P.E. NUMBER - P-0671

PROJECT REFERENCE NO.	SHEET NO.
W-5512	EC-26/CONST.13
RW SHEET NO.	
ROADWAY DESIGN ENGINEER	HYDRAULICS ENGINEER

REVISIONS

MATCH LINE -L- STA 141+50 SEE SHEET 12

MATCH LINE -L- STA 155+00 SEE SHEET 14



NOTE:
 SEE SHEETS 20 & 21 FOR -L- PROFILE
 SEE SHEET 23 FOR -Y5- & -Y6- PROFILE
 SEE SHEET 25 FOR -DRIVE 10- & -DRIVE 11- PROFILE