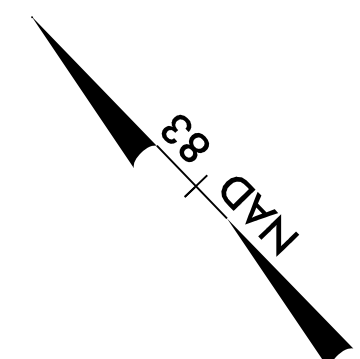


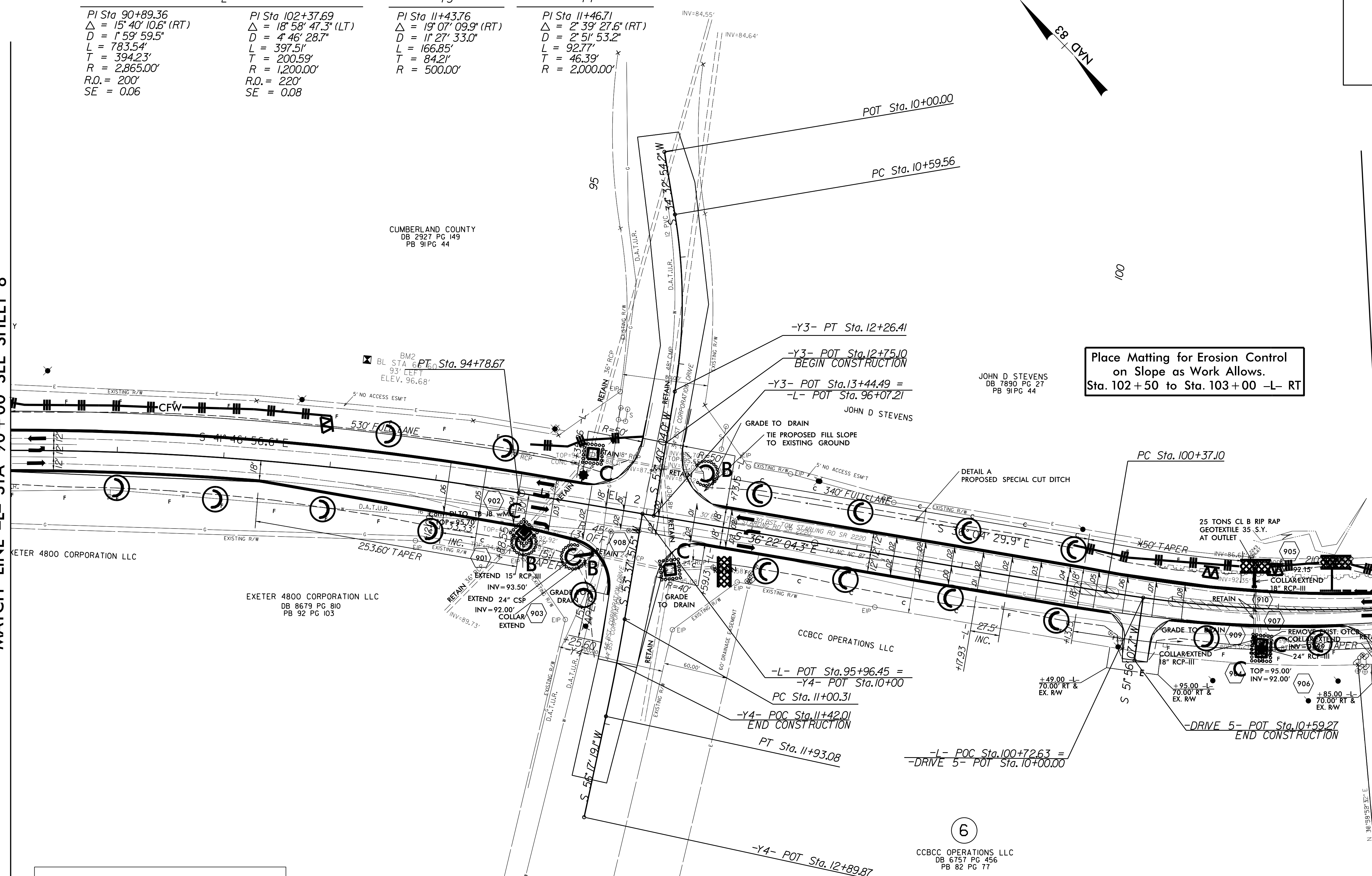
PROJECT REFERENCE NO. W-5512	SHEET NO. EC-22/CONST.09
RW SHEET NO.	
ROADWAY DESIGN ENGINEER	HYDRAULICS ENGINEER

-L-	-Y3-	-Y4-
PI Sta 90+89.36 Δ = 15° 40' 10.6" (RT) D = 1' 59' 59.5" L = 783.54' T = 394.23' R = 2,865.00' R.O. = 200' SE = 0.06	PI Sta 102+37.69 Δ = 18° 58' 47.3" (LT) D = 4' 46' 28.7" L = 397.51' T = 200.59' R = 1,200.00' R.O. = 220' SE = 0.08	PI Sta 11+43.76 Δ = 19° 07' 09.9" (RT) D = 11' 27' 33.0" L = 166.85' T = 84.21' R = 500.00'
		PI Sta 11+46.71 Δ = 2° 39' 27.6" (RT) D = 2' 51' 53.2" L = 92.77' T = 46.39' R = 2,000.00'



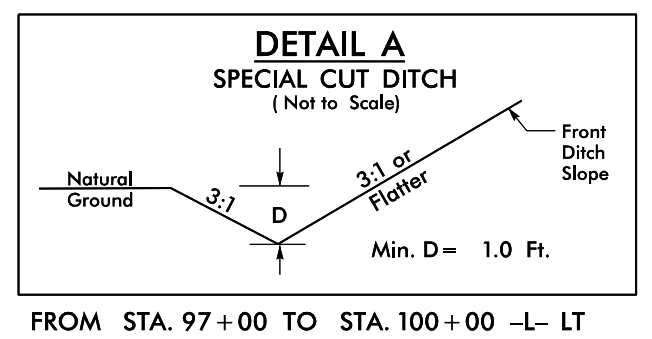
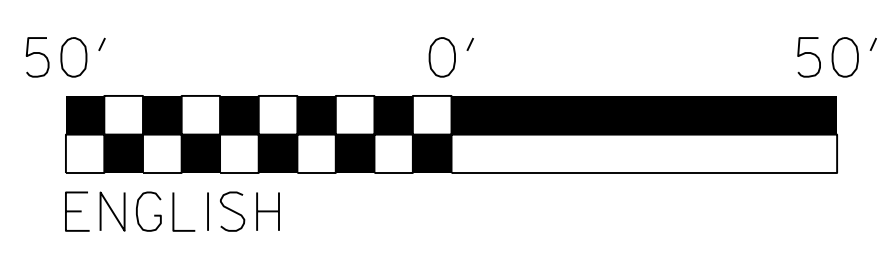
MATCH LINE -L- STA 90+00 SEE SHEET 8

MATCH LINE -L- STA 103+00 SEE SHEET 10



Place Matting for Erosion Control on Slope as Work Allows. Sta. 102+50 to Sta. 103+00 -L- RT

NOTES: ANY DEVIATION FROM OPTIONS GIVEN WILL REQUIRE PRIOR APPROVAL BY ENGINEER.
ADDITIONAL EROSION CONTROL DEVICES MAY NEED TO BE INSTALLED AS DIRECTED BY THE ENGINEER.



NOTE:
SEE SHEET 19 FOR -L- PROFILE
SEE SHEET 24 FOR -DRIVE 5- PROFILE

REVISIONS

8/17/99
SYSTEMS TIME
CUMBERLAND COUNTY