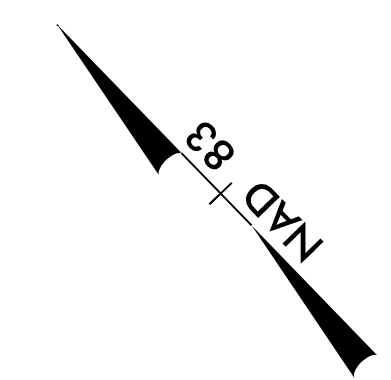


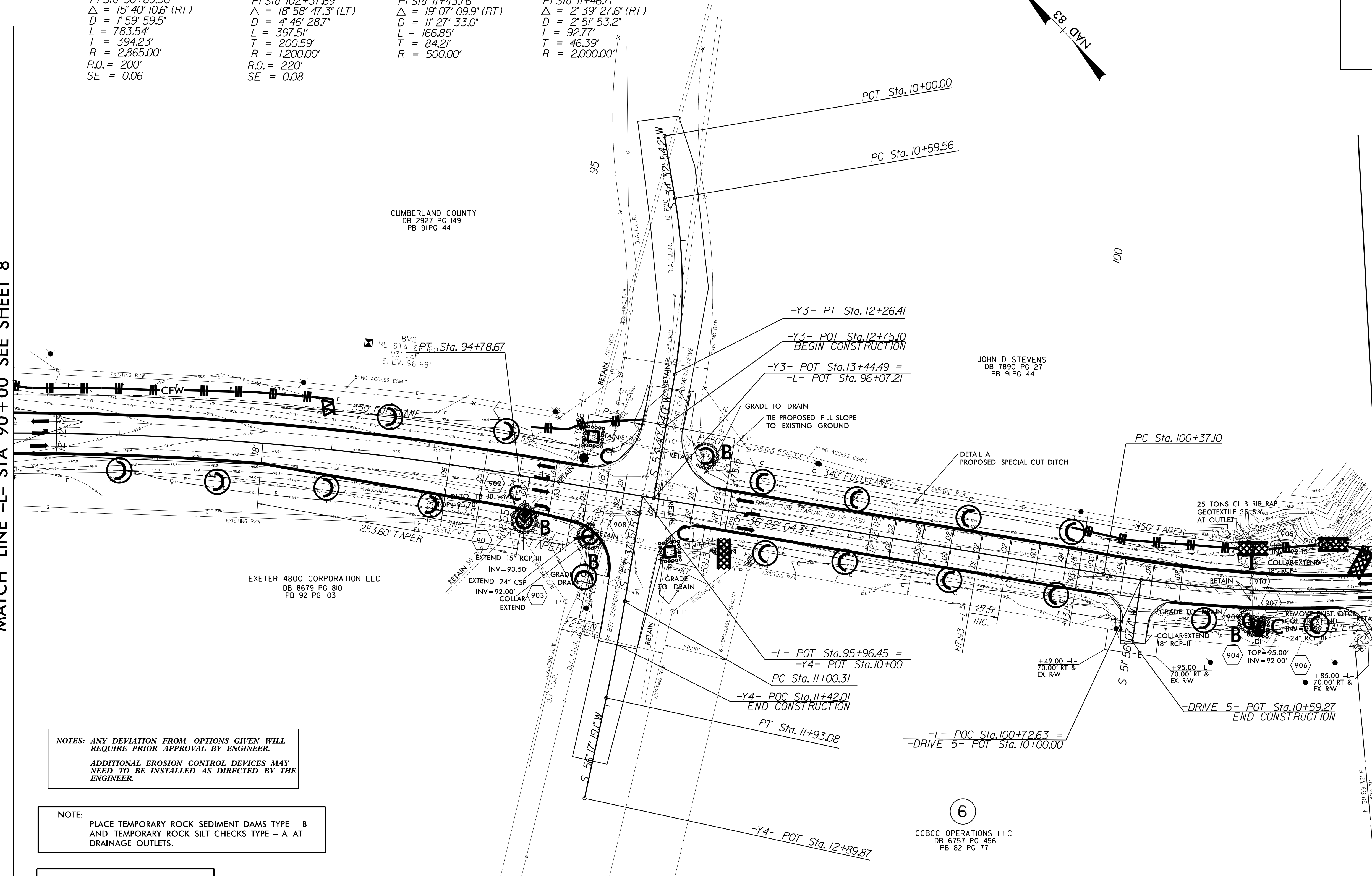
PROJECT REFERENCE NO. W-5512	SHEET NO. EC-09/CONST.09
RW SHEET NO.	HYDRAULICS ENGINEER
ROADWAY DESIGN ENGINEER	

-L-	-Y3-	-Y4-
PI Sta 90+89.36	PI Sta 102+37.69	PI Sta 11+43.76
$\Delta = 15' 40" 10.6" (RT)$	$\Delta = 18' 58" 47.3" (LT)$	$\Delta = 19' 07" 09.9" (RT)$
$D = 1' 59" 59.5"$	$D = 4' 46" 28.7"$	$D = 1' 27" 33.0"$
$L = 783.54'$	$L = 397.51'$	$L = 166.85'$
$T = 394.23'$	$T = 200.59'$	$T = 84.21'$
$R = 2,865.00'$	$R = 1,200.00'$	$R = 500.00'$
$R.O. = 200'$	$R.O. = 220'$	$R = 2,000.00'$
$SE = 0.06$	$SE = 0.08$	



MATCH LINE -L- STA 90+00 SEE SHEET 8

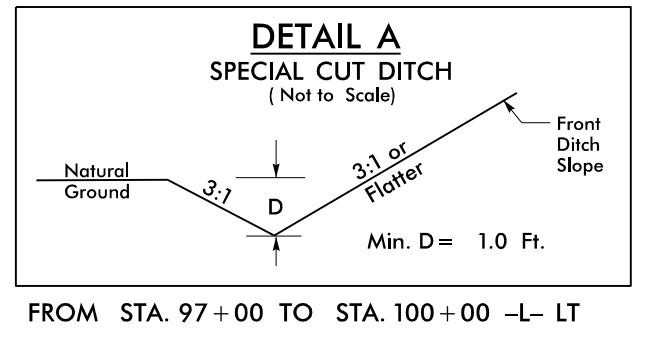
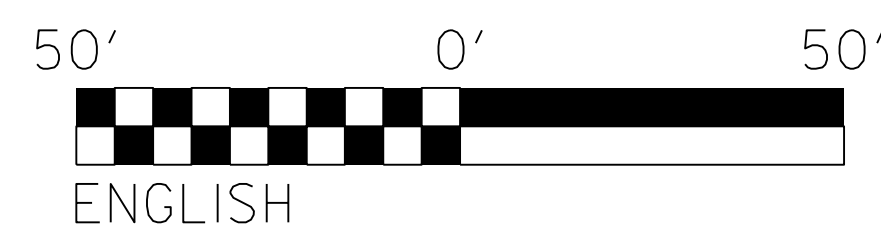
MATCH LINE -L- STA 103+00 SEE SHEET 10



NOTES: ANY DEVIATION FROM OPTIONS GIVEN WILL REQUIRE PRIOR APPROVAL BY ENGINEER.
ADDITIONAL EROSION CONTROL DEVICES MAY NEED TO BE INSTALLED AS DIRECTED BY THE ENGINEER.

NOTE:
PLACE TEMPORARY ROCK SEDIMENT DAMS TYPE - B AND TEMPORARY ROCK SILT CHECKS TYPE - A AT DRAINAGE OUTLETS.

CLEARING AND GRUBBING
EROSION CONTROL FOR
CONSTRUCTION SHEET 09



NOTE:
SEE SHEET 19 FOR -L- PROFILE
SEE SHEET 24 FOR -DRIVE 5- PROFILE

REVISIONS

8.17.09