

5/14/99

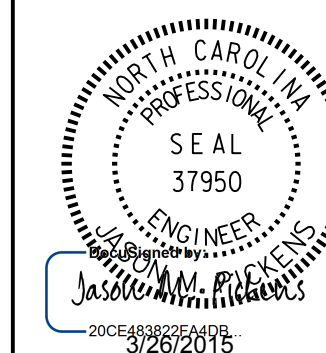
23-MAR-2015 12:53
 J:\W-5512\TIP\c:\pmp\w-5512_pmp_01.dgn
 \$\$\$USERNAME\$\$\$

T.I.P.: W-5512

CONTRACT:

**STATE OF NORTH CAROLINA
 DEPARTMENT OF TRANSPORTATION**

PROJECT REFERENCE NO.	SHEET NO.
W-5512	PMP-1



**PAVEMENT MARKING PLAN
 CUMBERLAND COUNTY**

LOCATION: SR 2220 (TOM STARLING ROAD) FROM US 301 TO NC 87.

ROADWAY STANDARD DRAWING

THE FOLLOWING ROADWAY STANDARDS AS APPEAR IN "ROADWAY STANDARD DRAWINGS" - PROJECT SERVICES UNIT - N.C. DEPARTMENT OF TRANSPORTATION - RALEIGH, N.C., DATED JANUARY 2012 ARE APPLICABLE TO THIS PROJECT AND BY REFERENCE HEREBY ARE CONSIDERED A PART OF THESE PLANS:

STD. NO.	TITLE
1205.01	PAVEMENT MARKINGS - LINE TYPES AND OFFSETS
1205.02	PAVEMENT MARKINGS - 2 LANE AND MULTILANE ROADWAYS
1205.04	PAVEMENT MARKINGS - INTERSECTIONS
1205.05	PAVEMENT MARKINGS - TURN LANES
1205.06	PAVEMENT MARKINGS - LANE DROPS
1205.08	PAVEMENT MARKINGS - SYMBOL AND WORD MESSAGES
1205.12	PAVEMENT MARKINGS - BRIDGES
1205.13	PAVEMENT MARKINGS - LANE REDUCTIONS
1250.01	RAISED PAVEMENT MARKERS - INSTALLATION SPACING
1251.01	RAISED PAVEMENT MARKERS - TEMPORARY AND PERMANENT
1261.01	GUARDRAIL AND BARRIER DELINEATOR SPACING
1261.02	GUARDRAIL AND BARRIER DELINEATOR TYPES
1262.01	GUARDRAIL END DELINEATION

INDEX

SHEET NO.	DESCRIPTION
PMP-01	PAVEMENT MARKING PLAN TITLE SHEET
PMP-02	PAVEMENT MARKING SCHEDULE
PMP-03 THRU PMP-07	FINAL PAVEMENT MARKING PLANS

GENERAL NOTES

THE FOLLOWING GENERAL NOTES APPLY AT ALL TIMES FOR THE DURATION OF THE CONSTRUCTION PROJECT, EXCEPT WHEN OTHERWISE NOTED IN THE PLAN, OR DIRECTED BY THE ENGINEER.

A) INSTALL PAVEMENT MARKINGS AND PAVEMENT MARKERS ON THE FINAL SURFACE AS FOLLOWS:

ROAD TYPE	MARKING	MARKER
-L- (TOM STARLING RD)	THERMOPLASTIC	PERMANENT RAISED
-Y- LINES	THERMOPLASTIC	PERMANENT RAISED
BRIDGE DECK SURFACES	COLD APPLIED PLASTIC (TYPE 2) OR (TYPE 3)	PERMANENT RAISED

- B) TIE PROPOSED PAVEMENT MARKING LINES TO EXISTING PAVEMENT MARKING LINES.
- C) REMOVE/REPLACE ANY CONFLICTING/DAMAGED PAVEMENT MARKINGS AND MARKERS.
- D) STOPBAR LOCATION AT NON-SIGNALIZED INTERSECTIONS MAY BE ADJUSTED AS DIRECTED BY THE ENGINEER.
- E) REMOVE ALL RESIDUE AND SURFACE LAITANCE BY ACCEPTABLE METHODS ON THE BRIDGE DECK(S) PRIOR TO PLACING PAVEMENT MARKING.
- F) PASSING ZONE(S) WILL BE DETERMINED IN THE FIELD AND MUST BE APPROVED BY THE ENGINEER.
- G) MARKERS SHALL BE INSTALLED ACCORDING TO THE NCDOT ROADWAY STANDARD DRAWING 1250.01.

PLANS PREPARED BY:

DAVID L. WILVER, P.E. PROJECT ENGINEER
J. MATTHEW PICKENS, P.E. PROJECT DESIGN ENGINEER

PLANS PREPARED BY :

PARSONS
 NC LICENSE NO. F-0246
 FOR
 DIVISION OF HIGHWAYS