

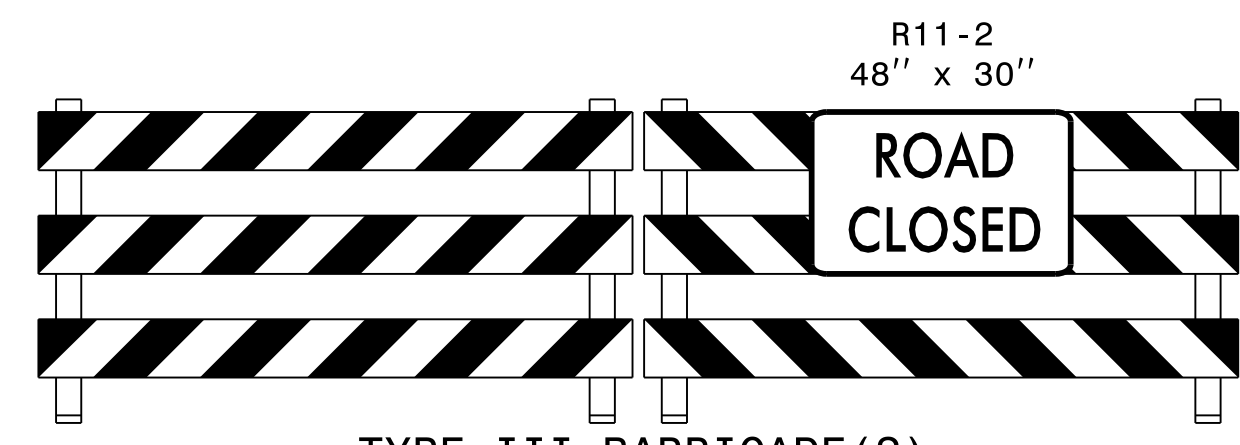
772799

ICT
 USING OFF-SITE DETOUR, INSTALL 36" RCP
 THEN COMPLETE -L- CONSTRUCTION FROM
 STA. 213+00 TO 215+00

215

NAD 83

220



TYPE III BARRICADE(S)
C

SEE SHEET TMP-2B
 FOR -L- OFF-SITE
 DETOUR SIGNING

INSTALL PROPOSED
 36" RCP

-L- STA. 213+00 +/-

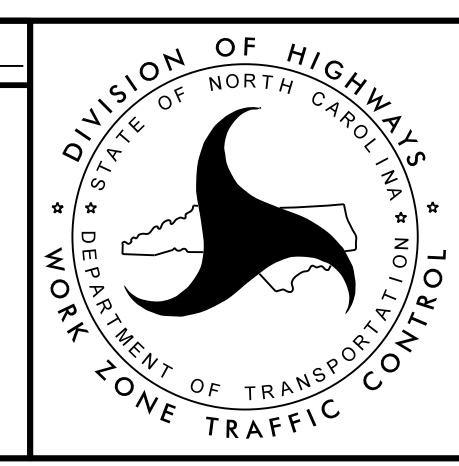
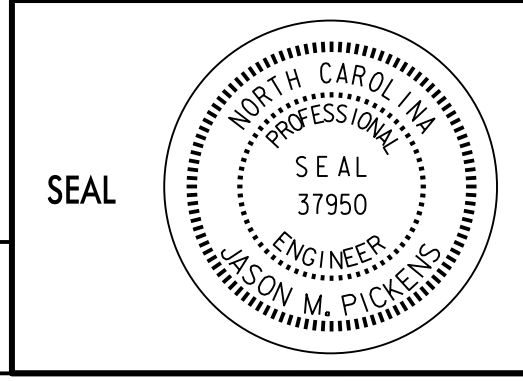
-L- STA. 215+00 +/-

(TOM STARLING RD)

BREAK LINE SEE SHEET TMP-11

25 MAR 2015 15:37
 C:\Users\jason.m.pickens\Documents\TrafficControl\TCP\W-5512_TC_TMP-12.dgn
 \$\$\$\$USERNAME\$\$\$\$

APPROVED: Jason M. Pickens DATE: 3/31/2015
201503312224102



TRANSPORTATION
MANAGEMENT PLAN

PHASE I
DETAIL 9

PLANS PREPARED BY
PARSONS
5540 CENTERVIEW DR., SUITE 217
 RALEIGH, NORTH CAROLINA 27606
 NO. LICENSE NO. F-5246
 FOR NORTH CAROLINA DEPT. OF TRANSPORTATION