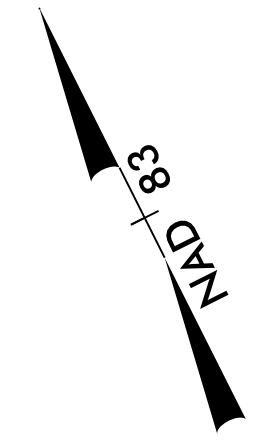




PROJECT REFERENCE NO. W-5512		SHEET NO. 7
RW SHEET NO.		
ROADWAY DESIGN ENGINEER Jim L. Boiras, PE 3/28/2015	HYDRAULICS ENGINEER Melanie Nguyen 3/28/2015	

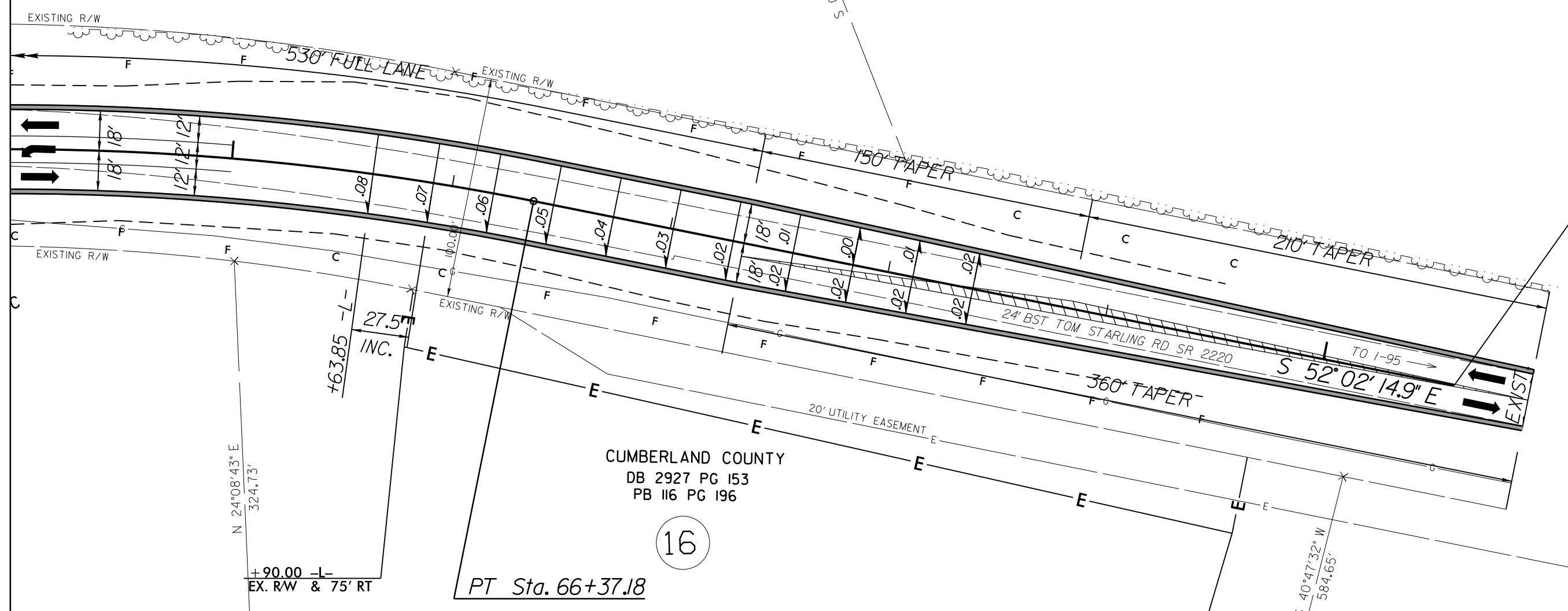
-L-
 PI Sta 62+83.16
 $\Delta = 34^{\circ}55'46.1''$ (RT)
 $D = 4^{\circ}46'28.7''$
 $L = 731.56'$
 $T = 377.55'$
 $R = 1,200.00'$
 $R.O. = 220'$
 $SE = 0.08$



MATCH LINE -L- STA 64+00 SEE SHEET 6

5
 WASTE MANAGEMENT OF THE CAROLINAS, INC
 DB 5585 PG 359

-L- STA.70+60 END WEDGING
 BEGIN RESURFACING



16
 CUMBERLAND COUNTY
 DB 2927 PG 153
 PB 116 PG 196
 PT Sta. 66+37.18

MATCH LINE -L- STA 77+00 SEE SHEET 8

REVISIONS

8/17/99
 09_MAR_2015_11:41
 C:\w\5512\proj\proj\W-5512_Rdy_PSH_07.DGN
 \$\$\$\$USER\$\$\$\$

*NOTE: RESURFACING TO END -L- STA.84+95.14 (SEE T.S.NO.1 SHEET 2)

NOTE:
SEE SHEET 18 FOR -L- PROFILE