

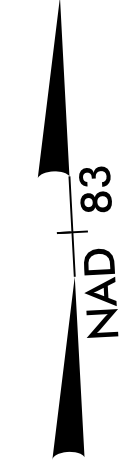
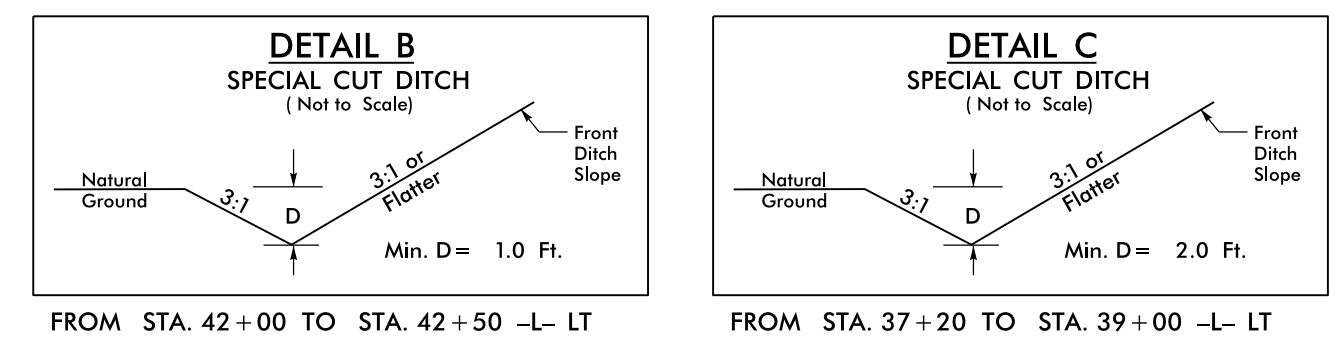
8/17/99



PROJECT REFERENCE NO. W-5512	SHEET NO. 5
RW SHEET NO.	
ROADWAY DESIGN ENGINEER JIM D. BIRN, P.E. 3/26/2015	HYDRAULICS ENGINEER MELANIE NGUYEN 3/26/2015

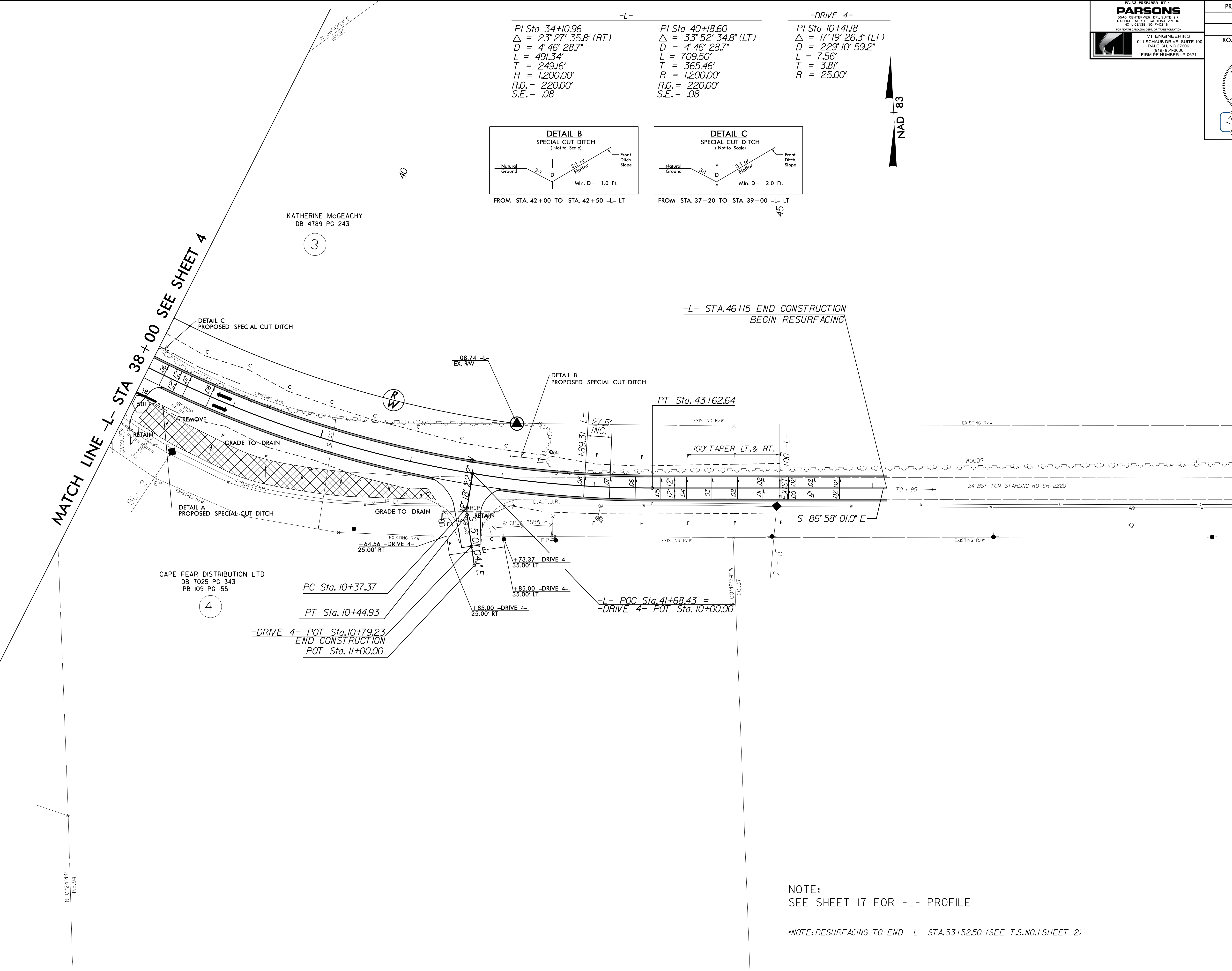
**-L-**

PI Sta 34+10.96 Δ = 23° 27' 35.8" (RT) D = 4' 46' 28.7" L = 491.34' T = 249.16' R = 1,200.00' R.O. = 220.00' S.E. = .08	PI Sta 40+18.60 Δ = 33° 52' 34.8" (LT) D = 4' 46' 28.7" L = 709.50' T = 365.46' R = 1,200.00' R.O. = 220.00' S.E. = .08	<b>-DRIVE 4-</b>
		PI Sta 10+41.18 Δ = 17° 19' 26.3" (LT) D = 229' 10' 59.2" L = 7.56' T = 3.81' R = 25.00'



MATCH LINE -L- STA 38+00 SEE SHEET 4

MATCH LINE -L- STA 50+00 SEE SHEET 6



KATHERINE McGEACHY  
DB 4789 PG 243

CAPE FEAR DISTRIBUTION LTD  
DB 7025 PG 343  
PB 109 PG 155

NOTE:  
SEE SHEET 17 FOR -L- PROFILE

\*NOTE: RESURFACING TO END -L- STA.53+52.50 (SEE T.S.NO.1 SHEET 2)

REVISIONS

09 MAR 2015 11:41  
C:\w\5512\proj\w-5512-Rdy\_PSH\_05.DGN  
8:53:51 PM USER:RVA