

REVISIONS

03-MAR-2019 11:41 AM C:\Users\jtruelove\OneDrive\Projects\5512-Resurfacing\PSH\_04.DGN

-L-  
 PI Sta 34+10.96  
 $\Delta = 23^\circ 27' 35.8''$  (RT)  
 $D = 4' 46.287''$   
 $L = 491.34'$   
 $T = 249.16'$   
 $R = 1,200.00'$   
 $R.O. = 320'$   
 $SE = 0.08$

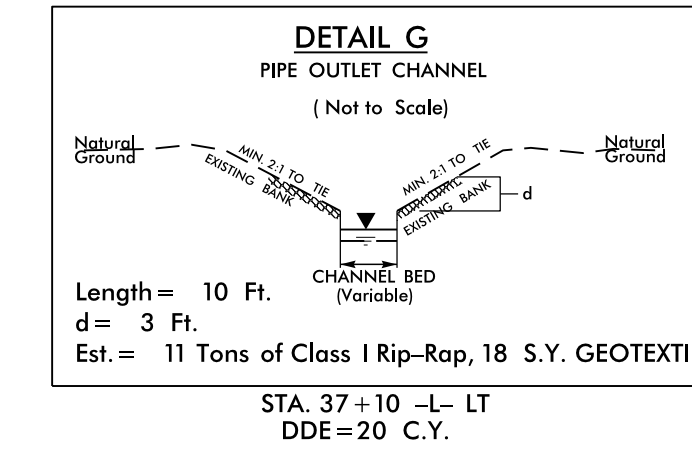
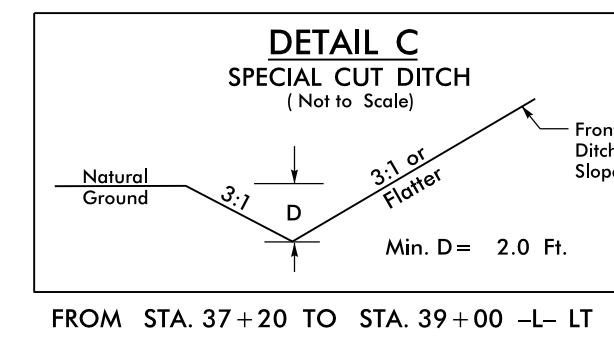
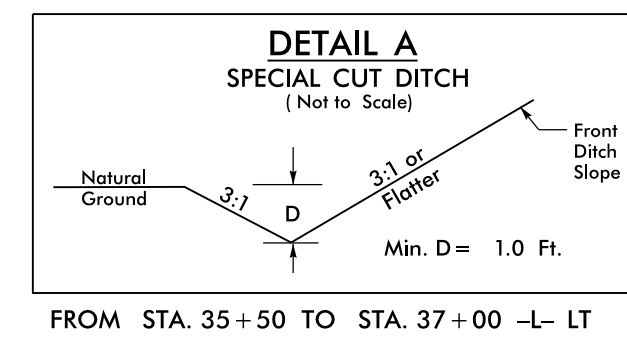
-DRIVE 1-  
 PI Sta 10+64.07  
 $\Delta = 32^\circ 12' 21.2''$  (LT)  
 $D = 114' 35.296''$   
 $L = 28.10'$   
 $T = 14.43'$   
 $R = 50.00'$

-DRIVE 2-  
 PI Sta 10+33.95  
 $\Delta = 6^\circ 56' 10.0''$  (LT)  
 $D = 114' 35.296''$   
 $L = 6.05'$   
 $T = 3.03'$   
 $R = 50.00'$

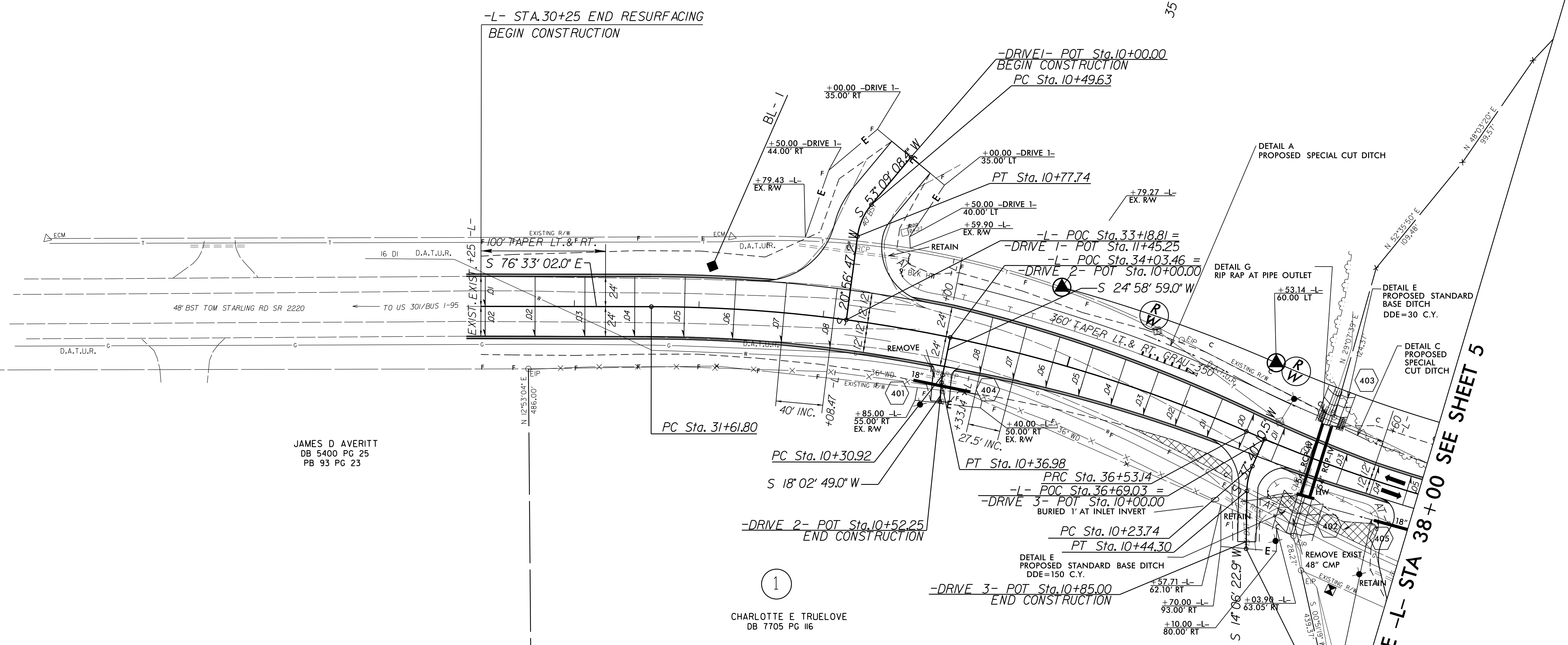
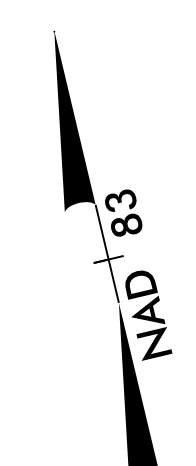
-DRIVE 3-  
 PI Sta 10+34.17  
 $\Delta = 23^\circ 33' 47.7''$  (LT)  
 $D = 114' 35.296''$   
 $L = 20.56'$   
 $T = 10.43'$   
 $R = 50.00'$



PROJECT REFERENCE NO. W-5512	SHEET NO. 4
RW SHEET NO.	
ROADWAY DESIGN ENGINEER JAMES D. AVERITT, PE SEAL 37874	HYDRAULICS ENGINEER MELANIE NGUYEN, PE SEAL 038683



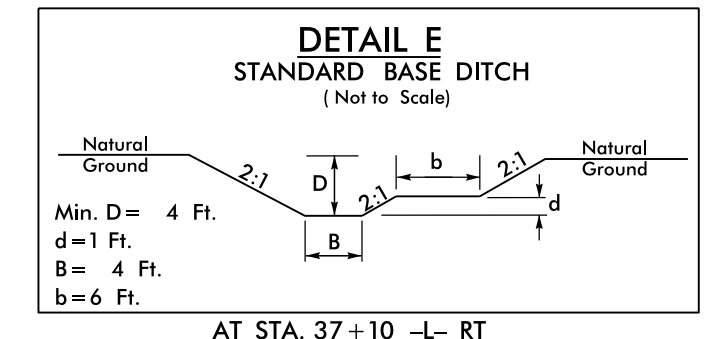
②  
 GCCFC 2006-GG7  
 STARLING INDUSTRIAL LLC  
 DB 8956 PG 35  
 PB 116 PG 32



JAMES D AVERITT  
 DB 5400 PG 25  
 PB 93 PG 23

①  
 CHARLOTTE E TRUELOVE  
 DB 7705 PG 116

**DATUM DESCRIPTION**  
 THE LOCALIZED COORDINATE SYSTEM DEVELOPED FOR THIS PROJECT IS BASED ON THE STATE PLANE COORDINATES ESTABLISHED BY NCDOT FOR MONUMENT "NCDOT 104" WITH NAD 83/NO 2011 STATE PLANE GRID COORDINATES OF NORTHING: 436711.704(FT) EASTING: 2033886.0091(FT) ELEVATION: 95.61(FT)  
 THE AVERAGE COMBINED GRID FACTOR USED ON THIS PROJECT (GROUND TO GRID) IS: 0.99888681  
 THE N.C. LAMBERT GRID BEARING AND LOCALIZED HORIZONTAL GROUND DISTANCE FROM "104" TO -L- STATION 11+28.53 IS N 62° 41' 23.84" W (10,096.771')  
 ALL LINEAR DIMENSIONS ARE LOCALIZED HORIZONTAL DISTANCES  
 VERTICAL DATUM USED IS NAVD 88



NOTE:  
 SEE SHEET 17 FOR -L- PROFILE

NOTE: RESURFACING TO BEGIN -L- STA. 11+28.53 (SEE T.S. NO. 1 SHEET 2)