

SURVEY CONTROL SHEET W-5512

ROW MARKER IRON PIN AND CAP-E

ALIGN	STATION	OFFSET	NORTH	EAST
L	59+75.00	-70.62	440263.1367	2029558.0744
L	61+50.00	-56.40	440215.5703	2029736.4863
L	134+59.36	95.16	435562.7823	2035368.4029
L	34+79.27	-60.00	440665.7559	2027165.7846
L	42+08.74	-60.00	440357.2448	2027798.3845
L	136+33.81	-50.00	435694.1977	2035556.6050
L	142+63.13	50.00	435788.0114	2036210.7038
L	151+51.77	50.00	435804.2872	2037042.8301
L	152+61.91	50.00	435766.4464	2037146.2677
L	152+58.66	29.98	435786.3702	2037150.0909
L	36+53.14	-60.00	440567.0550	2027319.1826
L	139+52.08	50.00	435669.8043	2035922.9887
L	128+62.52	-50.00	435959.8264	2034896.4348
L	128+32.48	-50.00	435981.0486	2034875.1639
L	137+41.23	50.00	435602.6935	2035671.1644
L	200+40.00	28.83	436340.4061	2041808.8217
L	200+40.00	45.00	436325.2317	2041814.4155
L	205+60.00	50.00	436499.5899	2042302.2411
L	207+40.00	40.00	436550.4510	2042467.9876
L	203+40.00	-30.79	436500.4838	2042069.4270
L	203+40.00	-42.00	436510.9959	2042065.5343
L	206+07.00	-46.00	436605.0768	2042319.1632
L	207+52.00	-50.00	436641.2197	2042465.5279
L	208+60.00	-44.00	436647.5997	2042577.6987
L	208+60.00	-29.77	436633.3975	2042578.6259
L	213+12.00	48.00	436576.3590	2043034.2568
L	213+12.00	30.77	436593.5675	2043033.4803

ROW MARKER IRON PIN AND CAP-E

ALIGN	STATION	OFFSET	NORTH	EAST
Y1	12+15.00	30.96	440287.4511	2029659.9656
Y1	11+95.00	-29.12	440267.3684	2029720.0207

BL	POINT	DESC.	NORTH	EAST	ELEVATION	L STATION	OFFSET
1		W-5512 BL-1	440747.0020	2026896.8060	103.13	32+09.44	33.59 LT
2		W-5512 BL-2	440346.7890	2027425.8770	102.02	38+59.62	70.81 RT
3		W-5512 BL-3	440253.7840	2028073.0780	101.46	44+96.62	19.42 RT
101		W-5512-1	440215.1850	2028806.4210	99.93	52+30.98	19.16 RT
102		W-5512-2	440149.2120	2029864.1840	102.40	62+86.94	32.64 LT
4		W-5512 BL-4	439318.0820	2030986.1250	115.94	76+78.32	15.39 LT
5		W-5512 BL-5	438904.3360	2031519.1730	114.54	83+53.09	17.09 LT
6		W-5512 BL-6	438546.5430	2031970.5030	101.52	89+27.49	22.13 LT
7		W-5512 BL-7	438090.2790	2032378.1980	95.40	95+35.79	26.60 LT
103		W-5512-3	437401.1190	2032880.2810	97.28	103+84.99	29.05 RT
104		W-5512-4	436711.7040	2033886.0090	95.61	116+03.13	23.27 RT
8		W-5512 BL-8	436130.6880	2034622.8530	94.22	125+48.17	22.27 RT
9		W-5512 BL-9	435765.1800	2034993.5680	95.51	130+61.81	40.67 RT
10		W-5512 BL-10	435584.2610	2035414.6700	95.21	134+98.79	67.34 RT
11		W-5512 BL-11	435893.9630	2036076.1390	93.54	141+78.93	99.14 LT
12		W-5512 BL-12	436022.7330	2036609.8090	96.26	146+95.88	99.00 LT
13		W-5512 BL-13	435833.3760	2037163.4060	93.47	152+55.01	18.74 LT
105		W-5512-5	435605.0150	2037731.6750	93.95	158+65.43	16.75 RT

BM1 ELEVATION = 101.04

N 440380 E 2027319

L STATION 37+58.00 95 RIGHT

R/R SPIKE IN BASE OF 18" OAK

BM2 ELEVATION = 96.68

N 438309 E 2032308

L STATION 93+23.00 104 LEFT

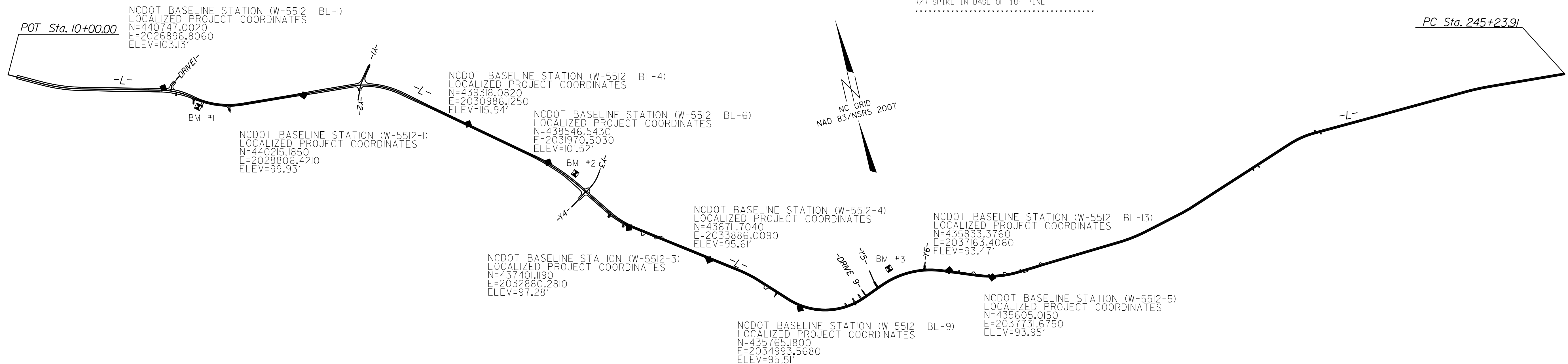
R/R SPIKE IN BASE OF 15' PINE

BM3 ELEVATION = 92.75

N 436040 E 2036339

L STATION 144+54.00 152 LEFT

R/R SPIKE IN BASE OF 18" PINE



DATUM DESCRIPTION

THE LOCALIZED COORDINATE SYSTEM DEVELOPED FOR THIS PROJECT IS BASED ON THE STATE PLANE COORDINATES ESTABLISHED BY NCGS FOR MONUMENT "W-5512-4" WITH NAD 83/NSRS 2007 STATE PLANE GRID COORDINATES OF NORTHING: 436711.704(++) EASTING: 2033886.009(++) ELEVATION: 95.61(++) THE AVERAGE COMBINED GRID FACTOR USED ON THIS PROJECT (GROUND TO GRID) IS: 0.99988681 THE N.C. LAMBERT GRID BEARING AND LOCALIZED HORIZONTAL GROUND DISTANCE FROM "W-5512-4" TO -L- STATION 10+00 IS N62°41'31.08"W 10,225.30 ALL LINEAR DIMENSIONS ARE LOCALIZED HORIZONTAL DISTANCES VERTICAL DATUM USED IS NAVD 88

NOTES:

- THE CONTROL DATA FOR THIS PROJECT CAN BE FOUND ELECTRONICALLY BY SELECTING PROJECT CONTROL DATA AT: [HTTPS://CONNECT.NCDOT.GOV/RESOURCES/LOCATION/](https://connect.ncdot.gov/resources/location/) THE FILES TO BE FOUND ARE AS FOLLOWS: W-5512_LS_CONTROL.TXT SITE CALIBRATION INFORMATION HAS NOT BEEN PROVIDED FOR THIS PROJECT IF FURTHER INFORMATION IS NEEDED, PLEASE CONTACT THE LOCATION AND SURVEYS UNIT.
- INDICATES GEODETIC CONTROL MONUMENTS USED OR SET FOR HORIZONTAL PROJECT CONTROL BY THE NCDOT LOCATION AND SURVEYS UNIT. PROJECT CONTROL ESTABLISHED USING GLOBAL POSITIONING SYSTEM. NETWORK ESTABLISHED FROM EXISTING HARN MONUMENTATION SEE GPS CALIBRATION SHEET FOR HORIZONTAL AND VERTICAL COORDINATE VALUES.

NOTE: DRAWING NOT TO SCALE

7/6/22/2023

03 MAR 2015 11:40 \\s01\proj\W-5512-1s-1c-1.dgn