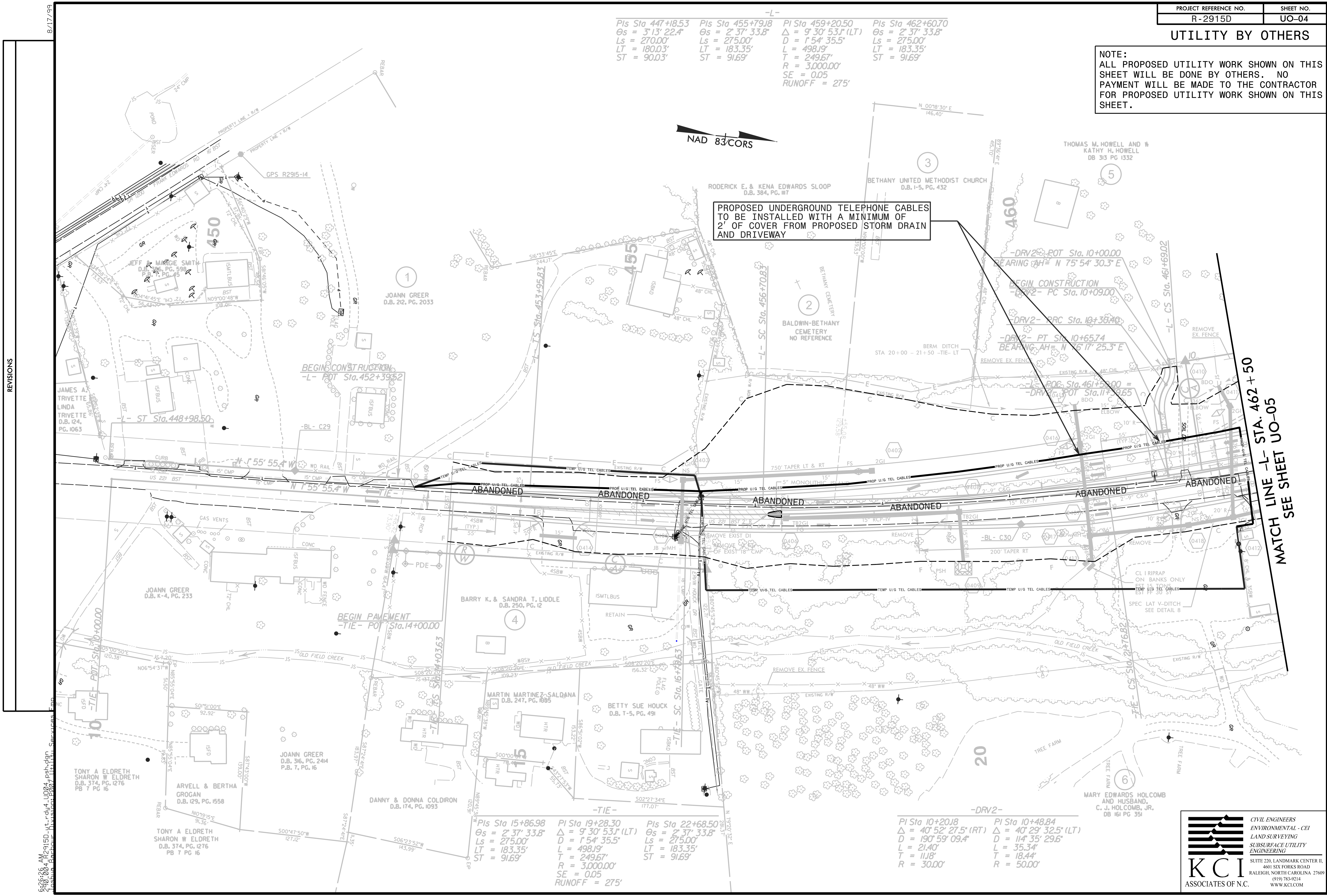


UTILITY BY OTHERS

NOTE:
ALL PROPOSED UTILITY WORK SHOWN ON THIS SHEET WILL BE DONE BY OTHERS. NO PAYMENT WILL BE MADE TO THE CONTRACTOR FOR PROPOSED UTILITY WORK SHOWN ON THIS SHEET.

Pls Sta 447+18.53 $\Theta_s = 3'13''22.4''$ $L_s = 270.00'$ $LT = 180.03'$ $ST = 90.03'$	Pls Sta 455+79.18 $\Theta_s = 2'37''33.8''$ $L_s = 275.00'$ $LT = 183.35'$ $ST = 91.69'$	Pls Sta 459+20.50 $\Delta = 9'30''53.1''(LT)$ $D = 1'54''35.5''$ $L = 498.19'$ $T = 249.67'$ $R = 3,000.00'$ $SE = 0.05$ $RUNOFF = 275'$	Pls Sta 462+60.70 $\Theta_s = 2'37''33.8''$ $L_s = 275.00'$ $LT = 183.35'$ $ST = 91.69'$
--	--	---	--



PROPOSED UNDERGROUND TELEPHONE CABLES TO BE INSTALLED WITH A MINIMUM OF 2' OF COVER FROM PROPOSED STORM DRAIN AND DRIVEWAY

MATCH LINE -L- STA. 462 + 50
MATCH LINE -L- STA. 462 + 50
SEE SHEET UO-05

REVISIONS

Pls Sta 15+86.98 $\Theta_s = 2'37''33.8''$ $L_s = 275.00'$ $LT = 183.35'$ $ST = 91.69'$	Pl Sta 19+28.30 $\Delta = 9'30''53.1''(LT)$ $D = 1'54''35.5''$ $L = 498.19'$ $T = 249.67'$ $R = 3,000.00'$ $SE = 0.05$ $RUNOFF = 275'$	Pls Sta 22+68.50 $\Theta_s = 2'37''33.8''$ $L_s = 275.00'$ $LT = 183.35'$ $ST = 91.69'$
---	---	---

Pls Sta 10+20.18 $\Delta = 40'52''27.5''(RT)$ $D = 190'59''09.4''$ $L = 21.40'$ $T = 11.18'$ $R = 30.00'$	Pls Sta 10+48.84 $\Delta = 40'29''32.5''(LT)$ $D = 114'35''29.6''$ $L = 35.34'$ $T = 18.44'$ $R = 50.00'$
--	--

KCI
ASSOCIATES OF N.C.

CIVIL ENGINEERS
ENVIRONMENTAL - CEI
LAND SURVEYING
SUBSURFACE UTILITY
ENGINEERING

SUITE 220, LANDMARK CENTER II,
4601 SIX FORKS ROAD
RALEIGH, NORTH CAROLINA 27609
(919) 783-9214
WWW.KCI.COM

8.17.79
506.26 AY
R-2915D ut.dwg
2007.11.11
Psh.dgn
Task: Harbor Division 12007.11.11
Services: EOP