

PROJECT REFERENCE NO.	SHEET NO.
R-2915D	EC-41/CONST.21
RW SHEET NO.	
ROADWAY DESIGN ENGINEER	HYDRAULICS ENGINEER

FINAL GRADE EROSION CONTROL FOR CONSTRUCTION SHEET 21

Place Matting for Erosion Control on Slopes Adjacent to Permitted Wetlands as Work Allows.

INSTALL MATTING FOR EROSION CONTROL IN THE PROPOSED DITCH LINE.

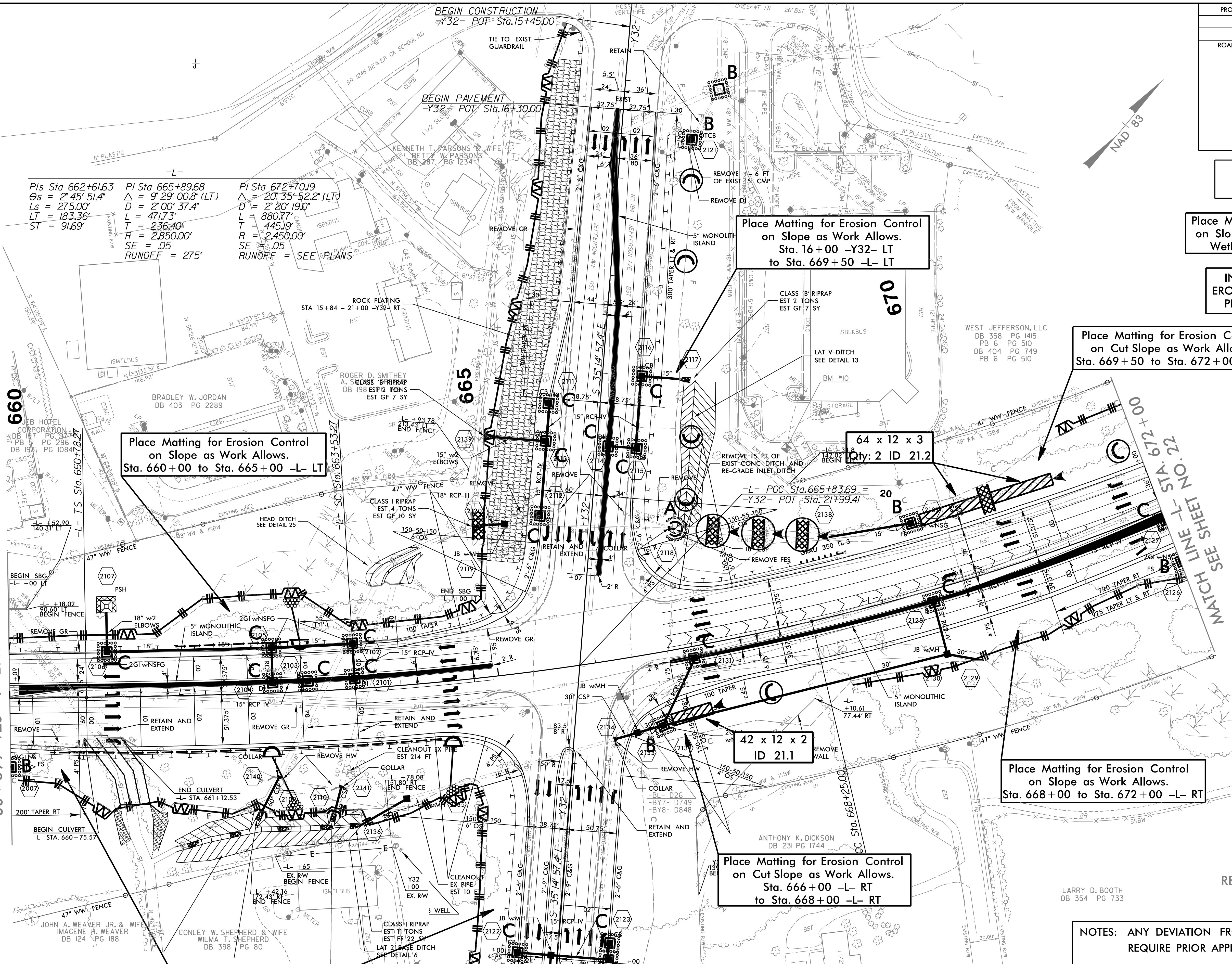
Place Matting for Erosion Control on Cut Slope as Work Allows. Sta. 669+50 to Sta. 672+00 -L- LT

WEST JEFFERSON, LLC  
DB 358 PG 1415  
PB 6 PG 510  
DB 404 PG 749  
PB 6 PG 510

-L-  
 PIs Sta 662+61.63    PI Sta 665+89.68    PI Sta 672+70.19  
 Δs = 2' 45" 51.4"    Δ = 9' 29" 00.8" (LT)    Δ = 20' 35" 52.2" (LT)  
 Ls = 275.00'    D = 2' 00" 37.4"    D = 2' 20" 19.0"  
 LT = 183.36'    L = 471.73'    L = 880.77'  
 ST = 91.69'    T = 236.40'    T = 445.19'  
                   RE = 2,850.00'    R = 2,450.00'  
                   SE = .05            SE = .05  
                   RUNOFF = 275'        RUNOFF = SEE PLANS

MATCH LINE -L- STA. 660+00  
SEE SHEET NO. 20

MATCH LINE -Y32- STA. 25+25  
SEE SHEET NO. 23



Place Matting for Erosion Control on Slope as Work Allows. Sta. 660+00 -L- RT to Sta. 25+25 -Y32- RT

Place Matting for Erosion Control on Cut Slope as Work Allows. Sta. 666+00 -L- RT to Sta. 668+00 -L- RT

Place Matting for Erosion Control on Slope as Work Allows. Sta. 668+00 to Sta. 672+00 -L- RT

64 x 12 x 3  
Qty: 2 ID 21.2

42 x 12 x 2  
ID 21.1

NOTES: ANY DEVIATION FROM OPTIONS GIVEN WILL REQUIRE PRIOR APPROVAL BY ENGINEER.

ADDITIONAL EROSION CONTROL DEVICES MAY NEED TO BE INSTALLED AS DIRECTED BY THE ENGINEER.

REVISED SIGNAL