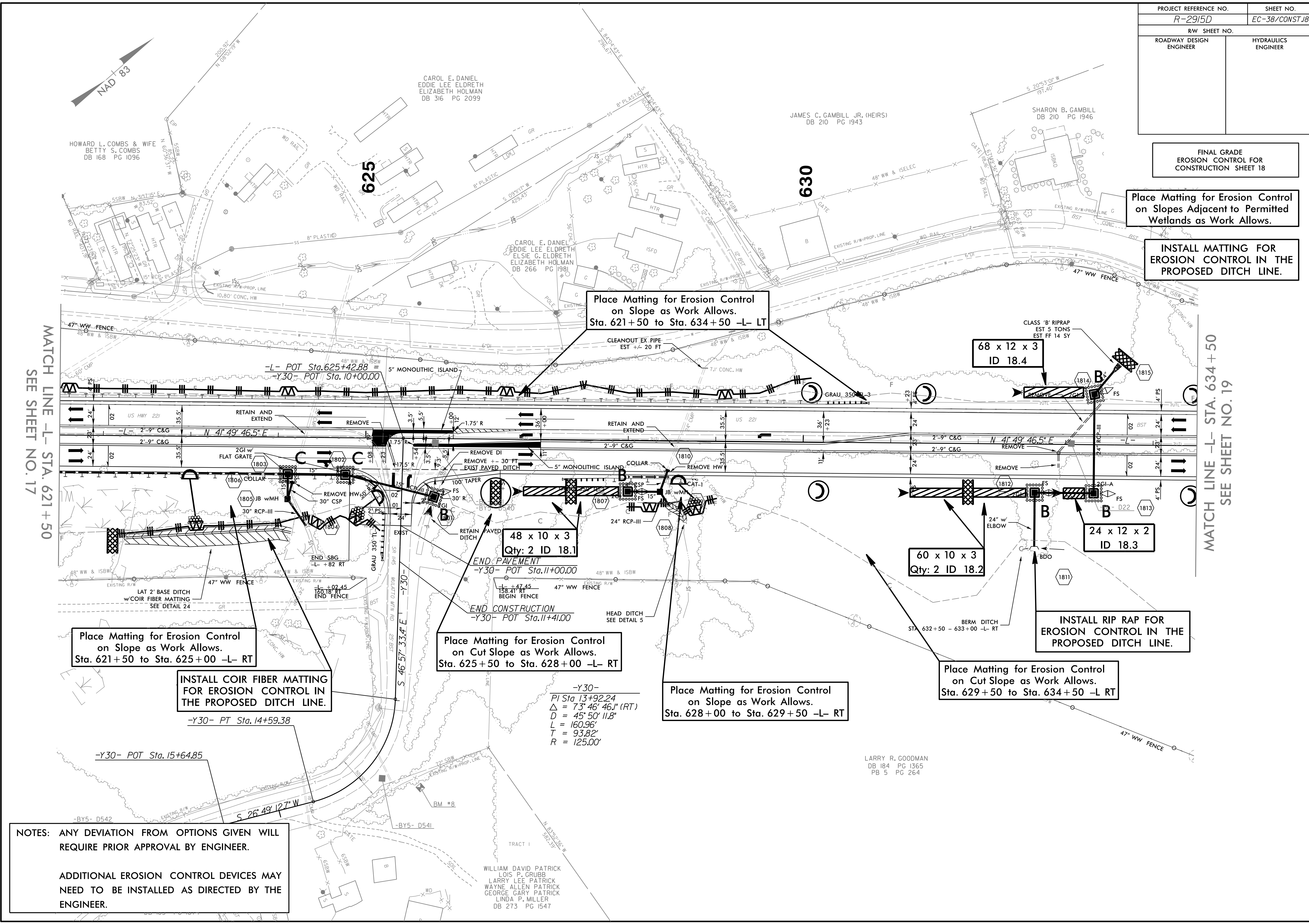


PROJECT REFERENCE NO.	SHEET NO.
R-2915D	EC-38/CONST.18
RW SHEET NO.	
ROADWAY DESIGN ENGINEER	HYDRAULICS ENGINEER

FINAL GRADE  
EROSION CONTROL FOR  
CONSTRUCTION SHEET 18

Place Matting for Erosion Control  
on Slopes Adjacent to Permitted  
Wetlands as Work Allows.

INSTALL MATTING FOR  
EROSION CONTROL IN THE  
PROPOSED DITCH LINE.



Place Matting for Erosion Control  
on Slope as Work Allows.  
Sta. 621+50 to Sta. 634+50 -L- LT

68 x 12 x 3  
ID 18.4

48 x 10 x 3  
Qty: 2 ID 18.1

60 x 10 x 3  
Qty: 2 ID 18.2

24 x 12 x 2  
ID 18.3

Place Matting for Erosion Control  
on Slope as Work Allows.  
Sta. 621+50 to Sta. 625+00 -L- RT

INSTALL COIR FIBER MATTING  
FOR EROSION CONTROL IN  
THE PROPOSED DITCH LINE.

Place Matting for Erosion Control  
on Cut Slope as Work Allows.  
Sta. 625+50 to Sta. 628+00 -L- RT

Place Matting for Erosion Control  
on Slope as Work Allows.  
Sta. 628+00 to Sta. 629+50 -L- RT

INSTALL RIP RAP FOR  
EROSION CONTROL IN THE  
PROPOSED DITCH LINE.

Place Matting for Erosion Control  
on Cut Slope as Work Allows.  
Sta. 629+50 to Sta. 634+50 -L- RT

NOTES: ANY DEVIATION FROM OPTIONS GIVEN WILL  
REQUIRE PRIOR APPROVAL BY ENGINEER.

ADDITIONAL EROSION CONTROL DEVICES MAY  
NEED TO BE INSTALLED AS DIRECTED BY THE  
ENGINEER.

WILLIAM DAVID PATRICK  
LOIS P. GRUBB  
LARRY LEE PATRICK  
WAYNE ALLEN PATRICK  
GEORGE GARY PATRICK  
LINDA P. MILLER  
DB 273 PG 1547

LARRY R. GOODMAN  
DB 184 PG 1365  
PB 5 PG 264

MATCH LINE -L- STA. 634+50  
SEE SHEET NO. 19

MATCH LINE -L- STA. 621+50  
SEE SHEET NO. 17