

PROJECT REFERENCE NO.	SHEET NO.
R-2915D	EC-37/CONST.17
RW SHEET NO.	
ROADWAY DESIGN ENGINEER	HYDRAULICS ENGINEER

FINAL GRADE  
EROSION CONTROL FOR  
CONSTRUCTION SHEET 17

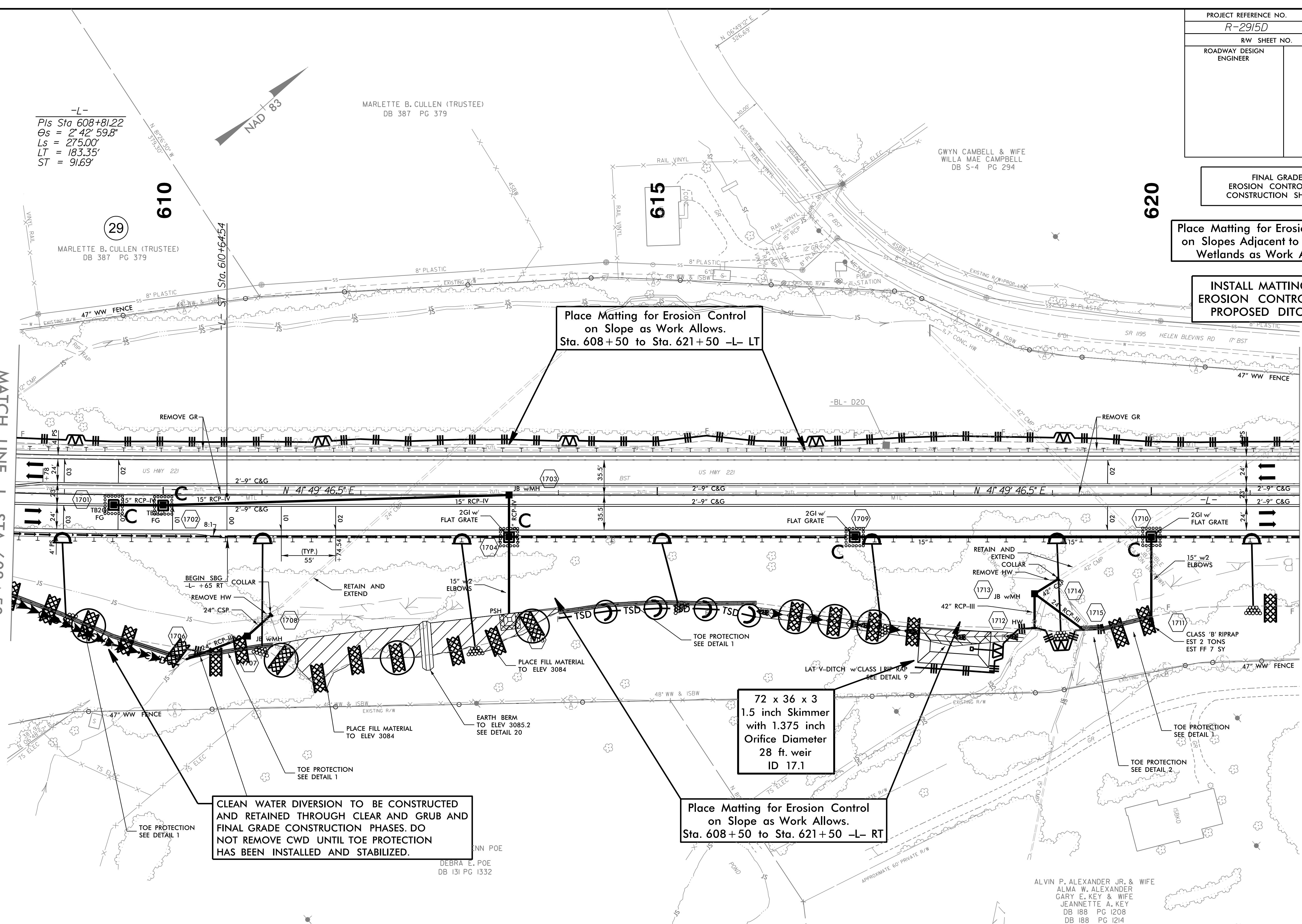
Place Matting for Erosion Control  
on Slopes Adjacent to Permitted  
Wetlands as Work Allows.

INSTALL MATTING FOR  
EROSION CONTROL IN THE  
PROPOSED DITCH LINE.

-L-  
Pls Sta 608+81.22  
θs = 2° 42' 59.8"  
Ls = 275.00'  
LT = 183.35'  
ST = 91.69'

MATCH LINE -L- STA. 608 + 50  
SEE SHEET NO. 16

MATCH LINE -L- STA. 621 + 50  
SEE SHEET NO. 18



CLEAN WATER DIVERSION TO BE CONSTRUCTED  
AND RETAINED THROUGH CLEAR AND GRUB AND  
FINAL GRADE CONSTRUCTION PHASES. DO  
NOT REMOVE CWD UNTIL TOE PROTECTION  
HAS BEEN INSTALLED AND STABILIZED.

72 x 36 x 3  
1.5 inch Skimmer  
with 1.375 inch  
Orifice Diameter  
28 ft. weir  
ID 17.1

Place Matting for Erosion Control  
on Slope as Work Allows.  
Sta. 608 + 50 to Sta. 621 + 50 -L- LT

Place Matting for Erosion Control  
on Slope as Work Allows.  
Sta. 608 + 50 to Sta. 621 + 50 -L- RT

NOTES: ANY DEVIATION FROM OPTIONS GIVEN WILL  
REQUIRE PRIOR APPROVAL BY ENGINEER.

ADDITIONAL EROSION CONTROL DEVICES MAY  
NEED TO BE INSTALLED AS DIRECTED BY THE  
ENGINEER.

