

PROJECT REFERENCE NO.	SHEET NO.
R-2915D	EC-33/CONST 13
ROADWAY DESIGN ENGINEER	HYDRAULICS ENGINEER

FINAL GRADE  
EROSION CONTROL FOR  
CONSTRUCTION SHEET 13

Place Matting for Erosion Control  
on Slopes Adjacent to Permitted  
Wetlands as Work Allows.

INSTALL MATTING FOR  
EROSION CONTROL IN THE  
PROPOSED DITCH LINE.

Place Matting for Erosion Control  
on Slope as Work Allows.  
Sta. 565+00 to Sta. 570+00 -L- LT

Place Matting for Erosion Control  
on Cut Slope as Work Allows.  
Sta. 560+00 to Sta. 565+00 -L- LT

Place Matting for Erosion Control  
on Slope as Work Allows.  
Sta. 570+00 to Sta. 572+00 -L- LT

56 x 10 x 3  
Qty: 2 ID 13.3

38 x 10 x 3  
ID 13.1

50 x 10 x 3  
Qty: 2 ID 13.2

Place Matting for Erosion Control  
on Cut Slope as Work Allows.  
Sta. 560+00 to Sta. 562+00 -L- RT

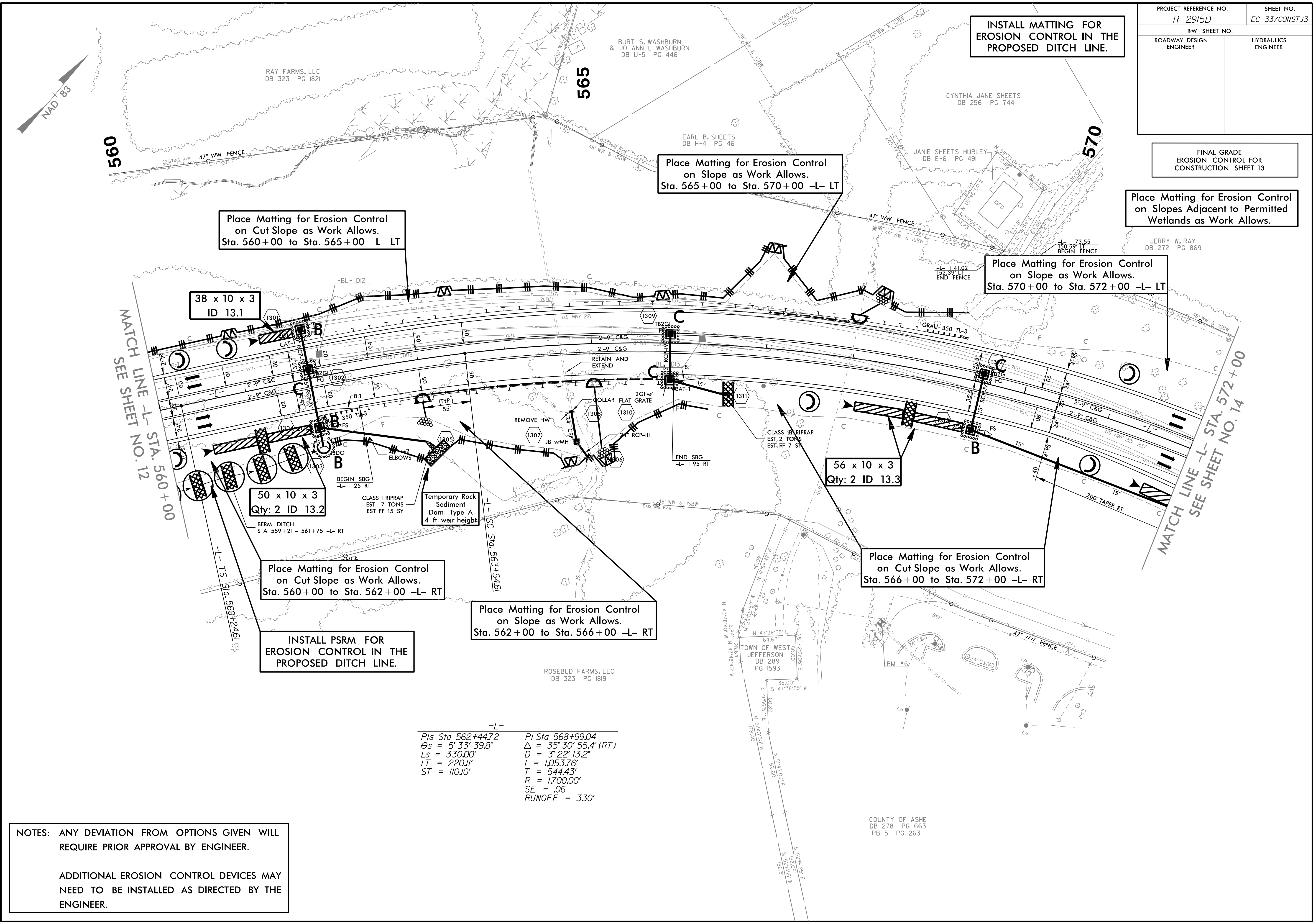
Place Matting for Erosion Control  
on Slope as Work Allows.  
Sta. 562+00 to Sta. 566+00 -L- RT

INSTALL PSRM FOR  
EROSION CONTROL IN THE  
PROPOSED DITCH LINE.

-L-  
 PIs Sta 562+44.72      PI Sta 568+99.04  
 Os = 5° 33' 39.8"      Δ = 35° 30' 55.4" (RT)  
 Ls = 330.00'            D = 3' 22' 13.2"  
 LT = 220.11'            L = 1,053.76'  
 ST = 110.10'            T = 544.43'  
                               R = 1,700.00'  
                               SE = .06  
                               RUNOFF = 330'

NOTES: ANY DEVIATION FROM OPTIONS GIVEN WILL  
REQUIRE PRIOR APPROVAL BY ENGINEER.

ADDITIONAL EROSION CONTROL DEVICES MAY  
NEED TO BE INSTALLED AS DIRECTED BY THE  
ENGINEER.



COUNTY OF ASHE  
DB 278 PG 663  
PB 5 PG 263