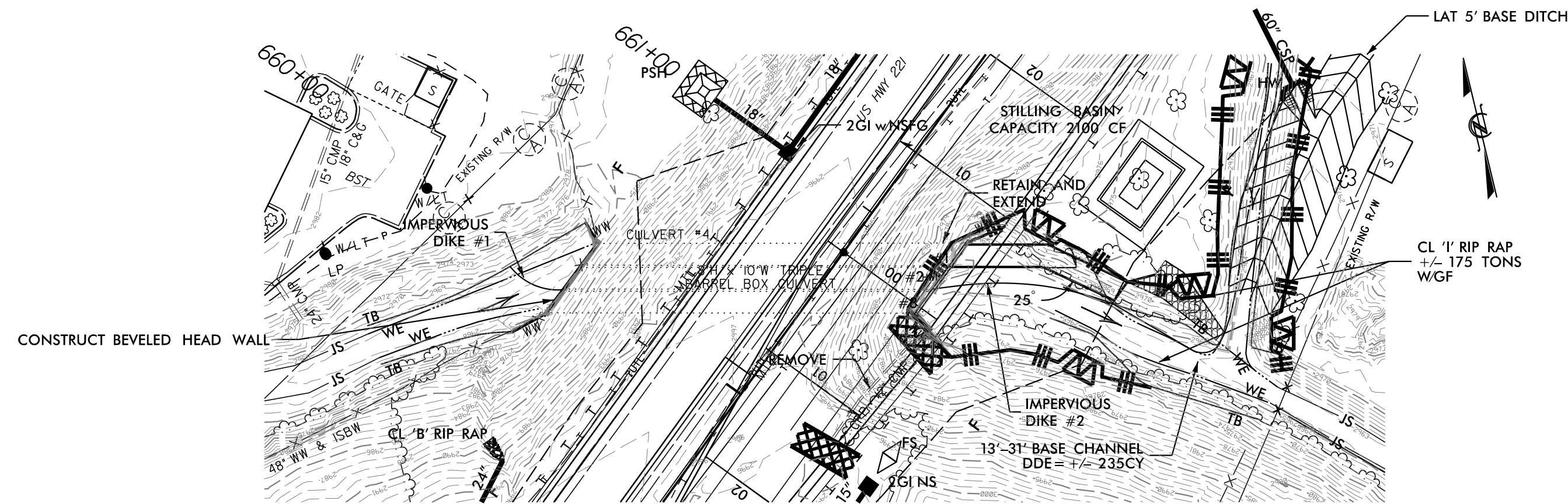


PROJECT REFERENCE NO. <i>R-2915D</i>	SHEET NO. <i>EC-21A/CONST.21</i>
RW SHEET NO.	
ROADWAY DESIGN ENGINEER	HYDRAULICS ENGINEER

CULVERT 660 -L-

PHASE 1



R-2915
ASHE COUNTY

CONSTRUCTION SEQUENCE FOR 3@ 10' x 8' RCBC
STA. 660+64 -L-
BEAVER CREEK

PHASE I

1. INSTALL STILLING BASIN (MIN. CAPACITY 2100 CF).
2. CONSTRUCT IMPERVIOUS DIKES 1 AND 2 AND DIVERT FLOW INTO EXISTING BARREL #3..
3. CONSTRUCT BARREL #1 AND SECTION OF OUTLET CHANNEL.
4. REMOVE IMPERVIOUS DIKES.

PHASE II

5. INSTALL IMPERVIOUS DIKES 3 AND 4 AND DIVERT FLOW THROUGH COMPLETED BARREL #1.
6. CONSTRUCT BARRELS 2 AND 3 AND REMAINDER OF OUTLET CHANNEL.
7. REMOVE IMPERVIOUS DIKES 3 AND 4 AND STILLING BASIN.

PHASE 2

