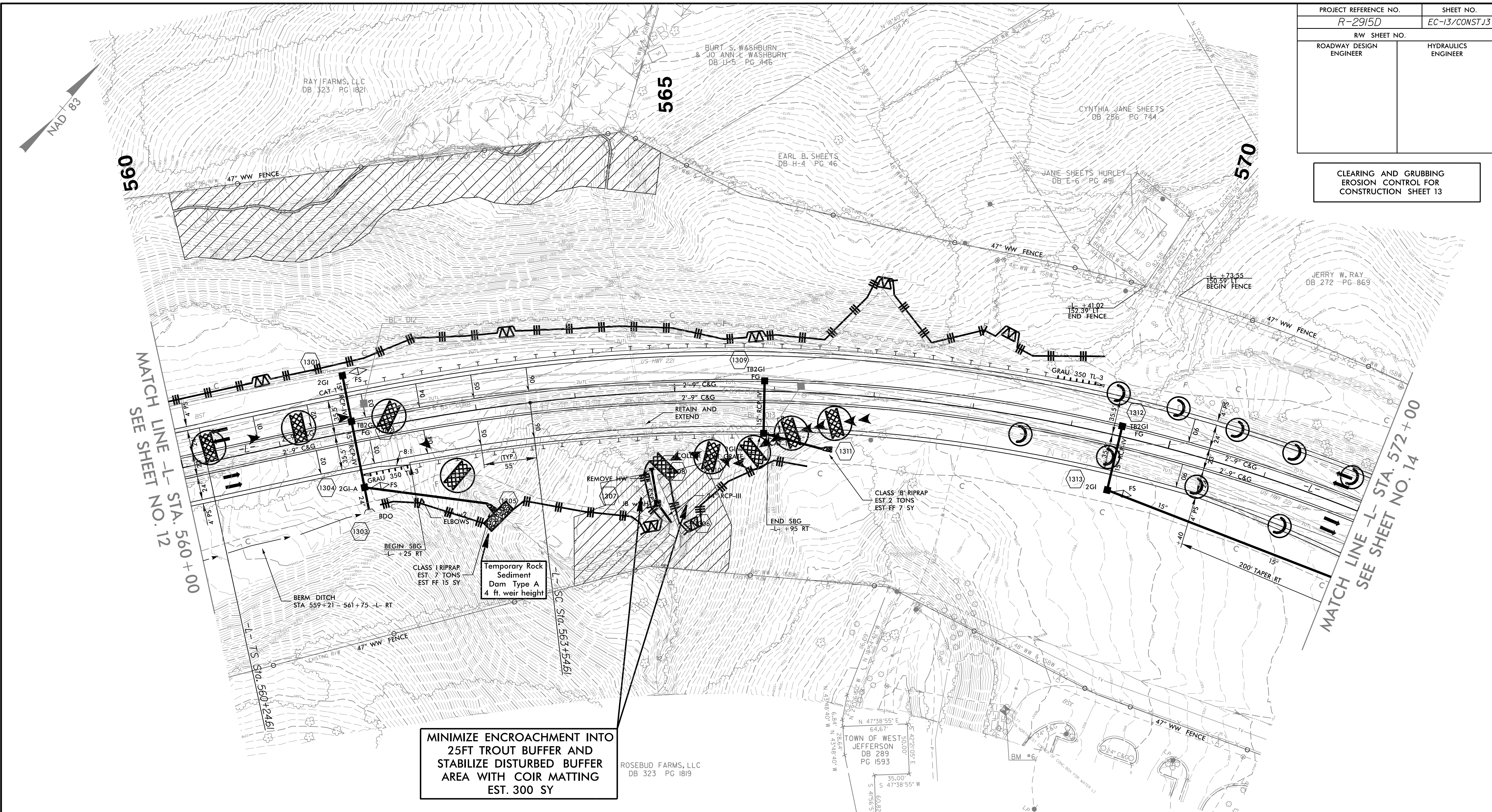


PROJECT REFERENCE NO.	SHEET NO.
R-2915D	EC-13/CONST J3
RW SHEET NO.	
ROADWAY DESIGN ENGINEER	HYDRAULICS ENGINEER

CLEARING AND GRUBBING
EROSION CONTROL FOR
CONSTRUCTION SHEET 13



MINIMIZE ENCROACHMENT INTO
25FT TROUT BUFFER AND
STABILIZE DISTURBED BUFFER
AREA WITH COIR MATTING
EST. 300 SY

NOTE:
PLACE TEMPORARY ROCK SEDIMENT DAMS TYPE - B
AND TEMPORARY ROCK SILT CHECKS TYPE - A AT
DRAINAGE OUTLETS.

NOTE:
PERIMETER EROSION CONTROL MEASURES SHALL BE
INSTALLED DURING CLEARING AND GRUBBING PHASE.

NOTES: ANY DEVIATION FROM OPTIONS GIVEN WILL
REQUIRE PRIOR APPROVAL BY ENGINEER.

ADDITIONAL EROSION CONTROL DEVICES MAY
NEED TO BE INSTALLED AS DIRECTED BY THE
ENGINEER.

-L-

$Pis Sta 562+44.72$	$PI Sta 568+99.04$
$\theta_s = 5^\circ 33' 39.8''$	$\Delta = 35^\circ 30' 55.4'' (RT)$
$L_s = 330.00'$	$D = 3^\circ 22' 13.2''$
$LT = 220.11'$	$L = 1,053.76'$
$ST = 110.10'$	$T = 544.43'$
	$R = 1,700.00'$
	$SE = .06$

ENVIRONMENTALLY SENSITIVE AREA
SEE PROJECT SPECIAL PROVISIONS

INSTALL PIPE(S) IN JURISDICTIONAL AREAS WITHOUT IMPACTING STREAM UNTIL
AREA STABILIZED AND ACCORDING TO NCDOT BEST MANAGEMENT
PRACTICES FOR CONSTRUCTION AND MAINTENANCE ACTIVITIES MANUAL.

COUNTY OF ASHE
DB 278 PG 663
PB 5 PG 263