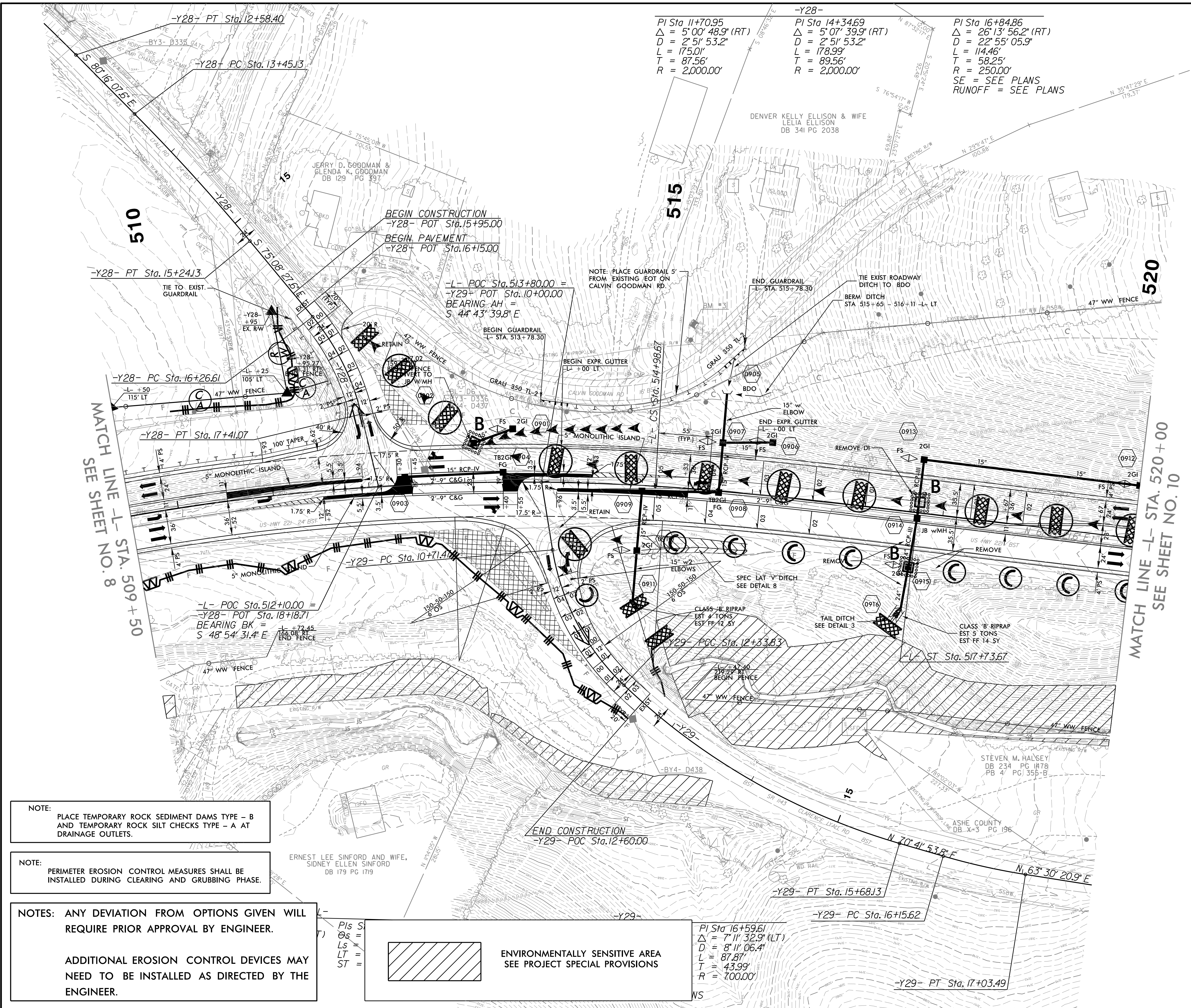
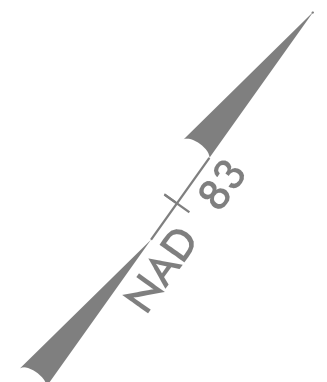


|                         |                     |
|-------------------------|---------------------|
| PROJECT REFERENCE NO.   | SHEET NO.           |
| R-2915D                 | EC-09/CONST.09      |
| RW SHEET NO.            |                     |
| ROADWAY DESIGN ENGINEER | HYDRAULICS ENGINEER |

CLEARING AND GRUBBING  
EROSION CONTROL FOR  
CONSTRUCTION SHEET 09



NOTE:  
PLACE TEMPORARY ROCK SEDIMENT DAMS TYPE - B  
AND TEMPORARY ROCK SILT CHECKS TYPE - A AT  
DRAINAGE OUTLETS.

NOTE:  
PERIMETER EROSION CONTROL MEASURES SHALL BE  
INSTALLED DURING CLEARING AND GRUBBING PHASE.

NOTES: ANY DEVIATION FROM OPTIONS GIVEN WILL  
REQUIRE PRIOR APPROVAL BY ENGINEER.

ADDITIONAL EROSION CONTROL DEVICES MAY  
NEED TO BE INSTALLED AS DIRECTED BY THE  
ENGINEER.

ENVIRONMENTALLY SENSITIVE AREA  
SEE PROJECT SPECIAL PROVISIONS

-Y28-  
PI Sta 11+70.95  
 $\Delta = 5^{\circ}00' 48.9"$  (RT)  
 $D = 2^{\circ}51' 53.2"$   
 $L = 175.01'$   
 $T = 87.56'$   
 $R = 2,000.00'$

-Y28-  
PI Sta 14+34.69  
 $\Delta = 5^{\circ}07' 39.9"$  (RT)  
 $D = 2^{\circ}51' 53.2"$   
 $L = 178.99'$   
 $T = 89.56'$   
 $R = 2,000.00'$

-Y28-  
PI Sta 16+84.86  
 $\Delta = 26^{\circ}13' 56.2"$  (RT)  
 $D = 22^{\circ}55' 05.9"$   
 $L = 114.46'$   
 $T = 58.25'$   
 $R = 250.00'$   
SE - SEE PLANS  
RUNOFF = SEE PLANS

-L- POC Sta. 512+10.00 =  
-Y28- POT Sta. 18+18.71  
BEARING BK =  
 $S 48^{\circ}54' 31.4" E$

-L- POC Sta. 513+80.00 =  
-Y29- POT Sta. 10+00.00  
BEARING AH =  
 $S 44^{\circ}43' 39.8" E$

-Y29-  
PI Sta 16+59.61  
 $\Delta = 7^{\circ}11' 32.9"$  (LT)  
 $D = 8^{\circ}11' 06.4"$   
 $L = 87.87'$   
 $T = 43.99'$   
 $R = 700.00'$

MATCH LINE -L- STA. 509+50  
SEE SHEET NO. 8

MATCH LINE -L- STA. 520+00  
SEE SHEET NO. 10