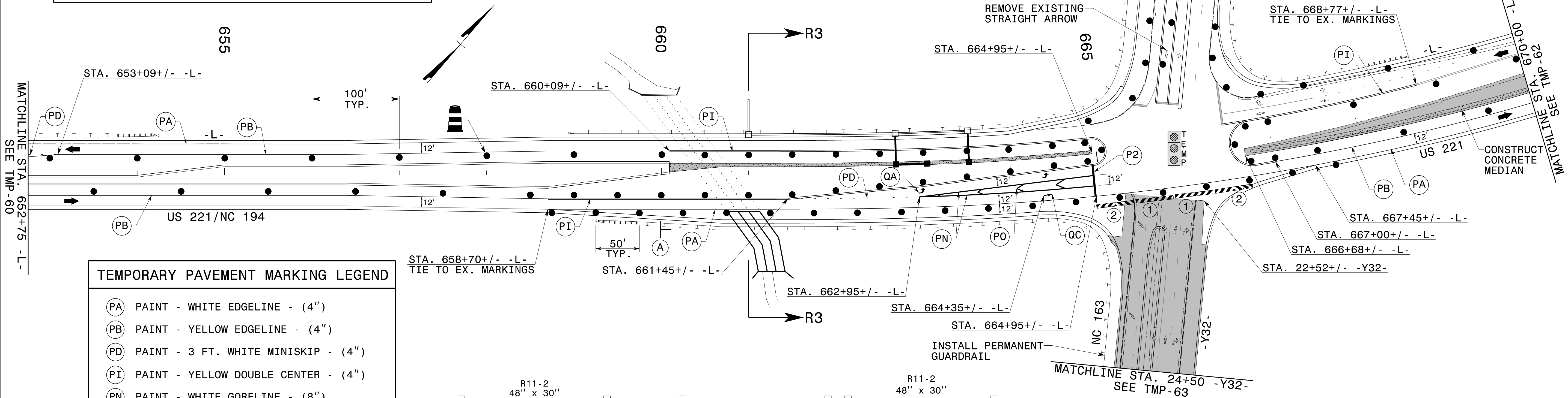
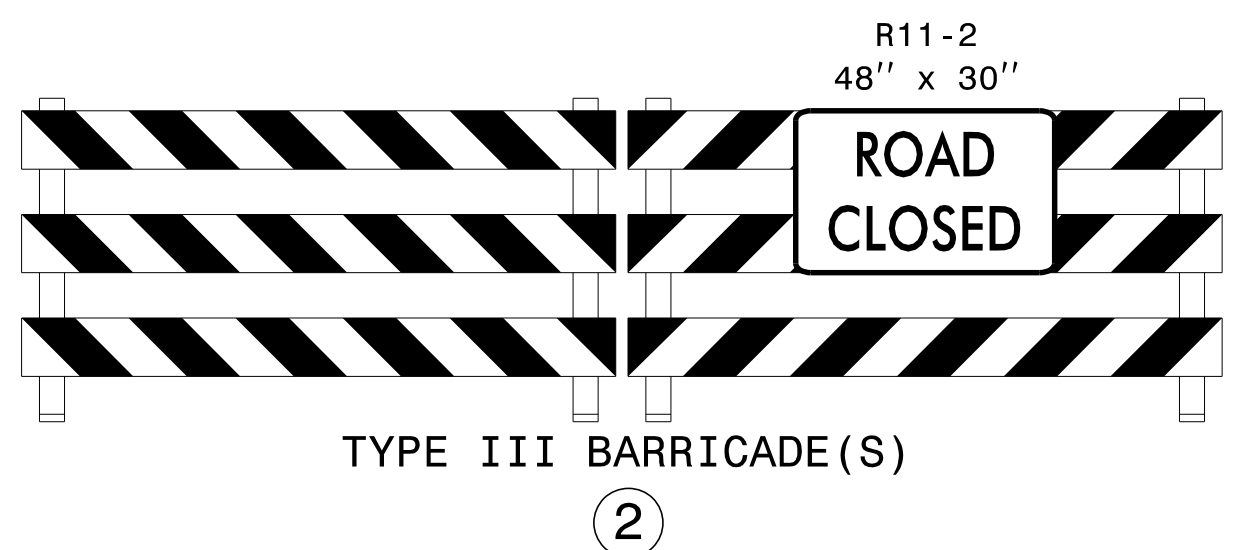
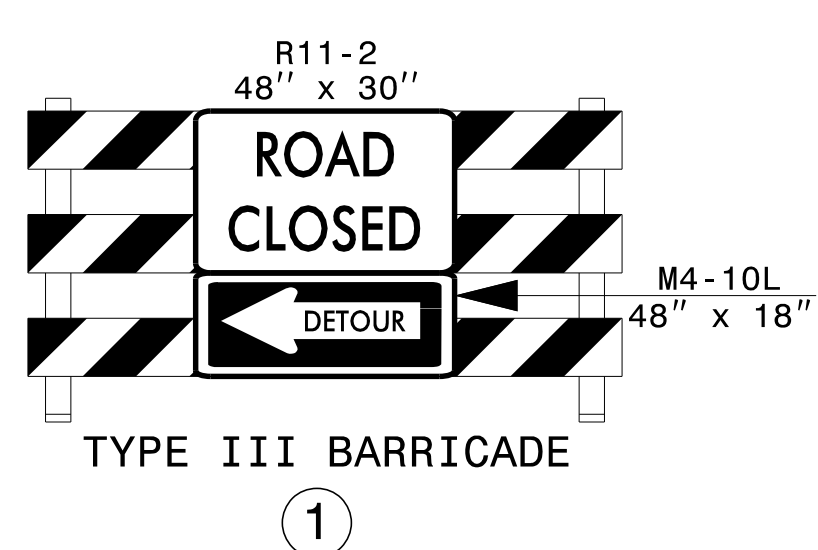


REFER TO RSD NOS. 1205.01, 1205.02, 1205.04, 1205.08, 1205.09, 1250.01, AND 1251.01 FOR PLACEMENT OF TEMPORARY PAVEMENT MARKINGS AND MARKERS UNLESS NOTED OTHERWISE.



TEMPORARY PAVEMENT MARKING LEGEND	
(PA)	PAINT - WHITE EDGELINE - (4")
(PB)	PAINT - YELLOW EDGELINE - (4")
(PD)	PAINT - 3 FT. WHITE MINISKIP - (4")
(PI)	PAINT - YELLOW DOUBLE CENTER - (4")
(PN)	PAINT - WHITE GORELINE - (8")
(PO)	PAINT - WHITE DIAGONAL (CHEVRON) - (8")
(P2)	PAINT - WHITE STOP BAR - (24")
(QA)	PAINT - LEFT ARROW
(QB)	PAINT - RIGHT ARROW
(QC)	PAINT - STRAIGHT ARROW



APPROVED: *J. W. Woolard, Jr.* DATE: 11/7/2014

SEAL

PHASE III DETAILS

11/7/2014 p:\t\p\projects-r-2915d\trafficcontrol\cp\R2915D\_TC\_Ph3\_TMP61.dgn User:scodts