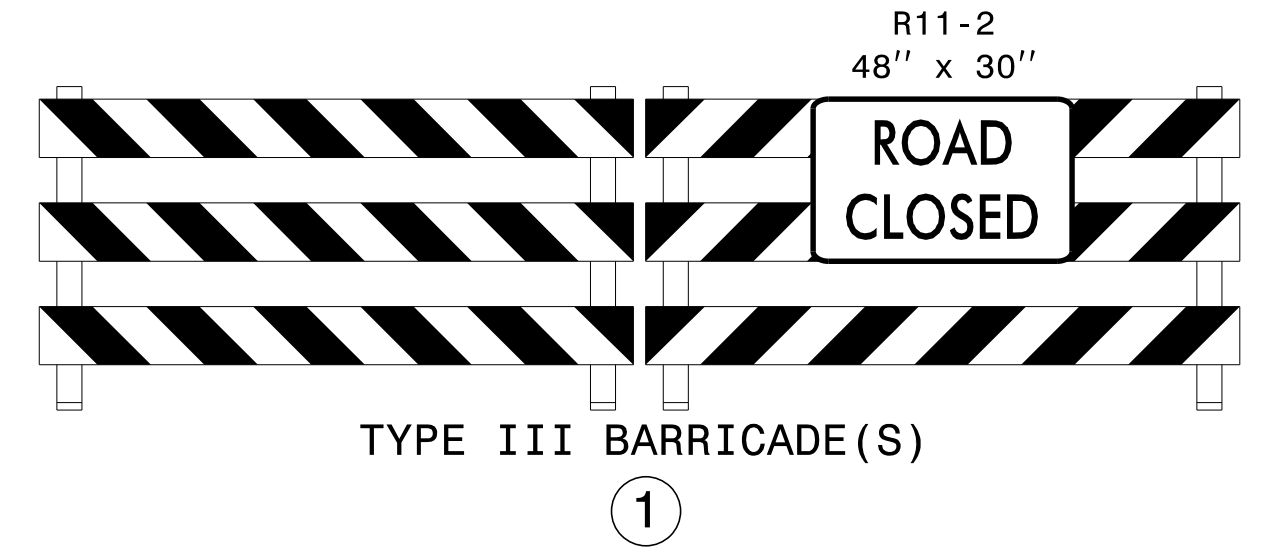
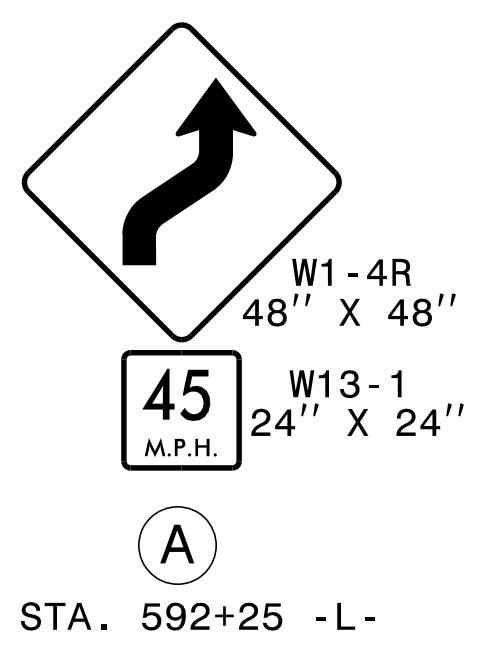


TEMPORARY PAVEMENT MARKING LEGEND	
(PA)	PAINT - WHITE EDGELINE - (4")
(PD)	PAINT - WHITE MINISKIP - (4")
(PE)	PAINT - WHITE SOLID LANE LINE - (4")
(PI)	PAINT - YELLOW DOUBLE CENTER - (4")
(P3)	PAINT - WHITE CROSSWALK LINE - (24")
(QA)	PAINT - LEFT TURN ARROW
(QI)	PAINT - ALPHANUMERIC CHARACTER

REFER TO RSD NOS. 1205.01, 1205.02, 1205.08, 1250.01, AND 1251.01 FOR PLACEMENT OF TEMPORARY PAVEMENT MARKINGS AND MARKERS UNLESS NOTED OTHERWISE.



10/24/2014 p:\tiprojects-r\2915d\trafficcontrol\cp\R2915D_TC_PH2_TMP38.dgn User:scodts

APPROVED: *J. W. Woolard* DATE: 10/30/2014

SEAL

PHASE II DETAILS