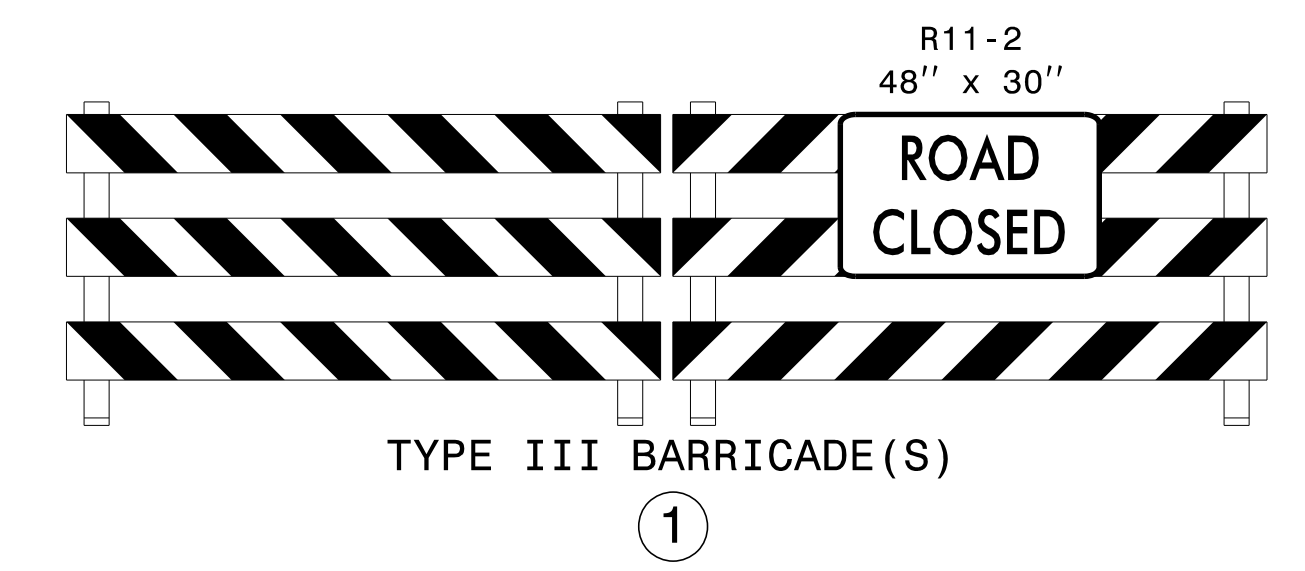
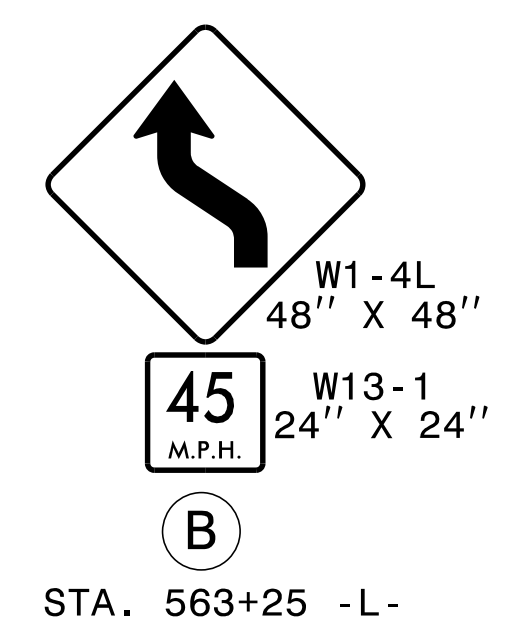
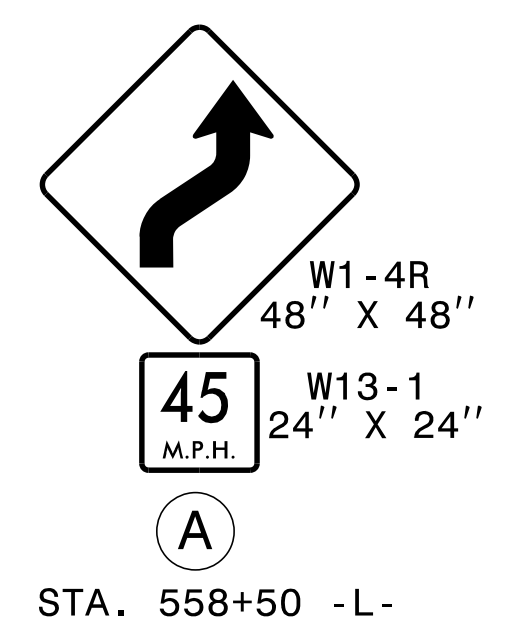


TEMPORARY PAVEMENT MARKING LEGEND	
(PA)	PAINT - WHITE EDGELINE - (4")
(PI)	PAINT - YELLOW DOUBLE CENTER - (4")
(P3)	PAINT - WHITE CROSSWALK LINE - (24")
(QI)	PAINT - ALPHANUMERIC CHARACTER

REFER TO RSD NOS. 1205.01, 1205.02, 1205.08, 1250.01, AND 1251.01 FOR PLACEMENT OF TEMPORARY PAVEMENT MARKINGS AND MARKERS UNLESS NOTED OTHERWISE.



APPROVED: *J. W. Woolard* DATE: 10/30/2014

SEAL

DIVISION OF HIGHWAYS
STATE OF NORTH CAROLINA
DEPARTMENT OF TRANSPORTATION
WORK ZONE TRAFFIC CONTROL

PHASE II DETAILS

10/24/2014
p:\t\p\projects-r\2915d\trafficcontrol\cp\R2915D_TC_PH2_TMP36.dgn
User:scodts