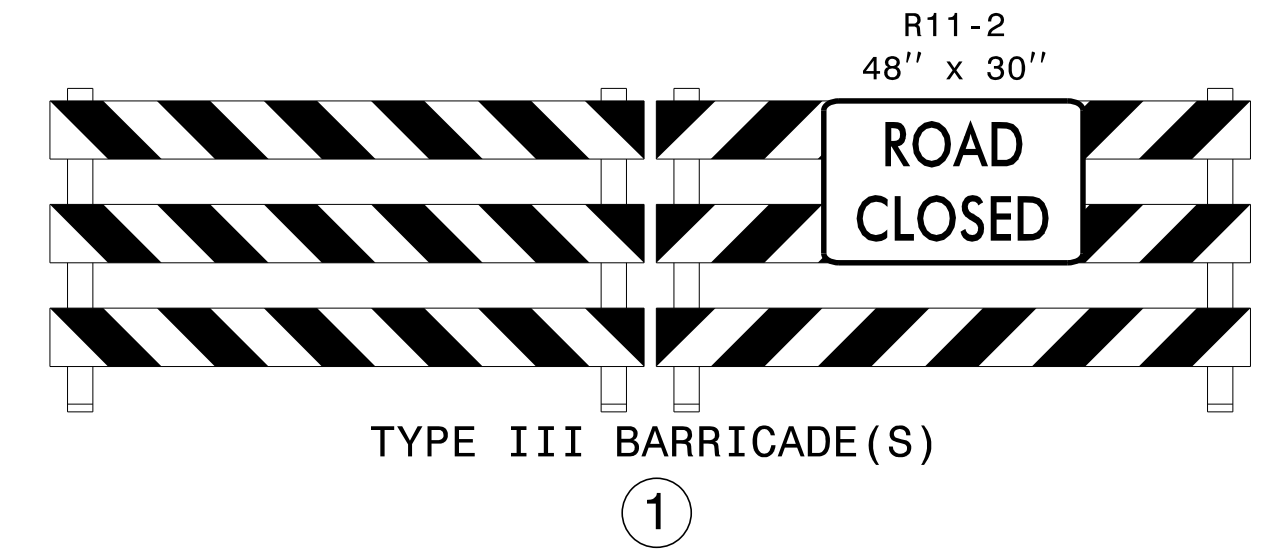


| TEMPORARY PAVEMENT MARKING LEGEND |                                     |
|-----------------------------------|-------------------------------------|
| (PA)                              | PAINT - WHITE EDGELINE - (4")       |
| (PD)                              | PAINT - 3 FT. WHITE MINISKIP - (4") |
| (PI)                              | PAINT - YELLOW DOUBLE CENTER - (4") |
| (P2)                              | PAINT - WHITE STOP BAR - (24")      |

REFER TO RSD NOS. 1205.01, 1205.02, 1250.01, AND 1251.01 FOR PLACEMENT OF TEMPORARY PAVEMENT MARKINGS AND MARKERS UNLESS NOTED OTHERWISE.



10/24/2014 p:\t\p\projects-r\2915d\trafficcontrol\cp\R2915D\_TC\_PH2\_TMP33.dgn User:scodts

|   |  |                         |
|---|--|-------------------------|
| APPROVED: <i>J. W. Woolard</i> DATE: 10/30/2014<br>SEAL<br> |  | <b>PHASE II DETAILS</b> |
|---|--|-------------------------|