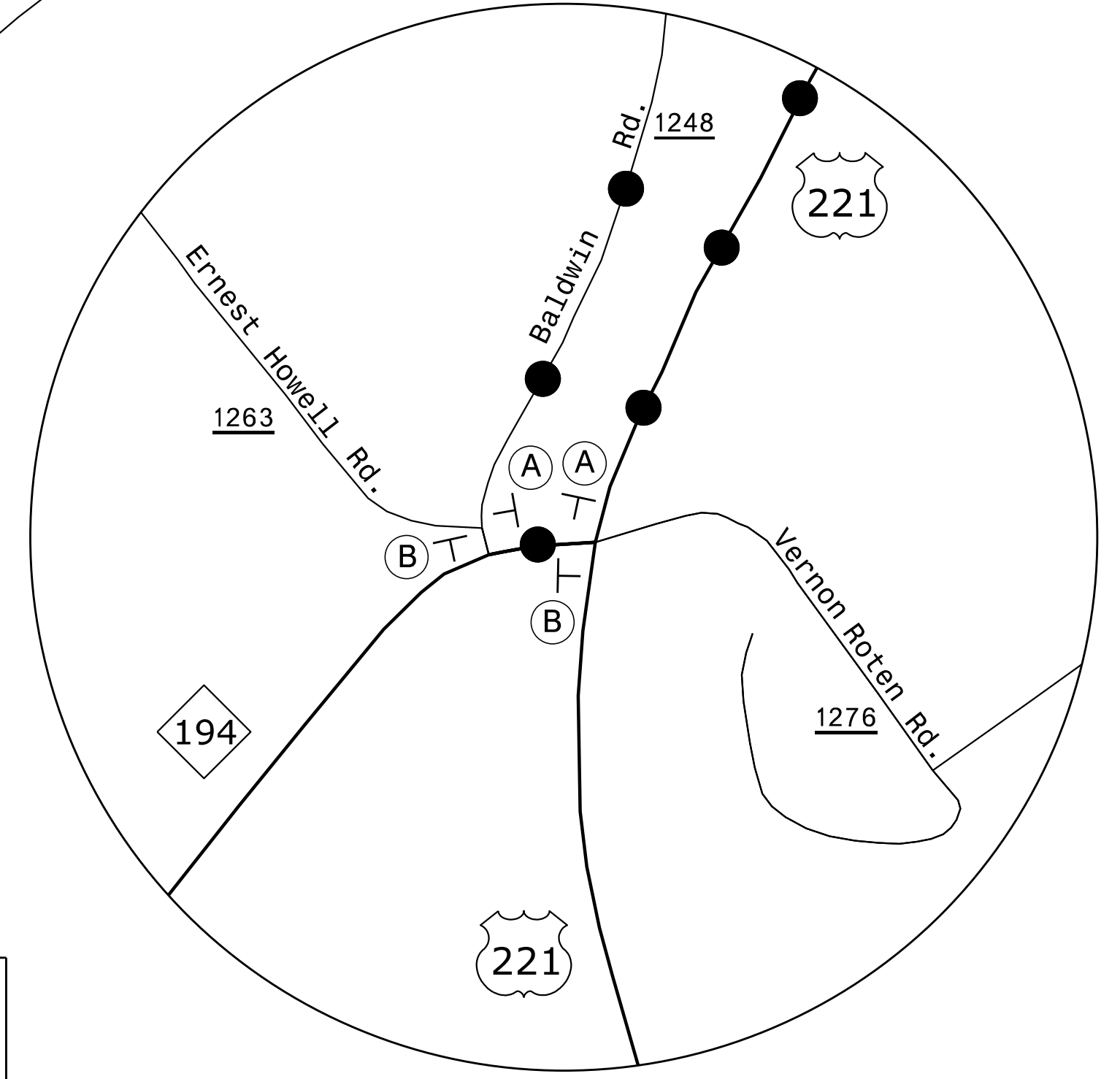
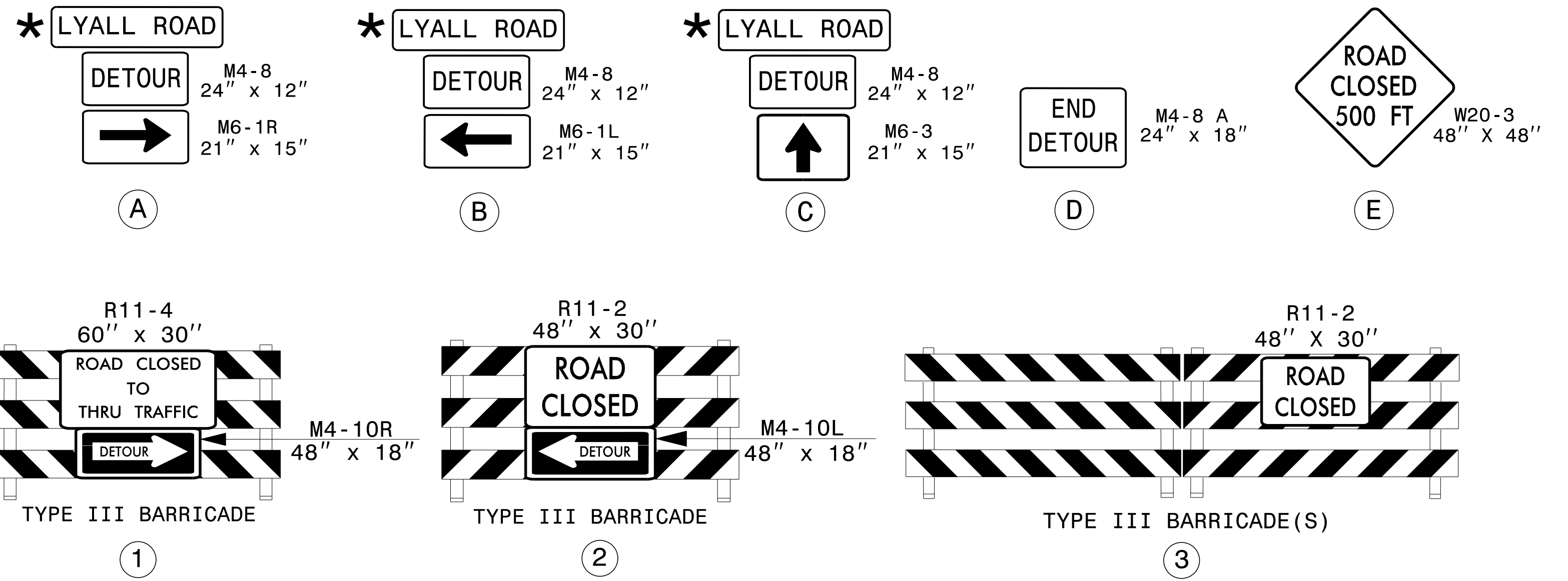


NOTE: FOR CONSTRUCTION DETAILS AT INTX OF LYALL ROAD AND US 221, SEE TMP-27.

INSET "A"



*SEE SHEET TMP-2B FOR SIGN DESIGN



10/24/2014
 p:\tipb\projects-r\2915d\trafficcontrol\cp\R2915D_TC_PHL_TMP26.dgn
 User:tscoo1s

APPROVED: <i>J. W. Woolard</i> DATE: 10/30/2014 		PHASE I OFF-SITE DETOUR LYALL ROAD SR 1143
---	--	---