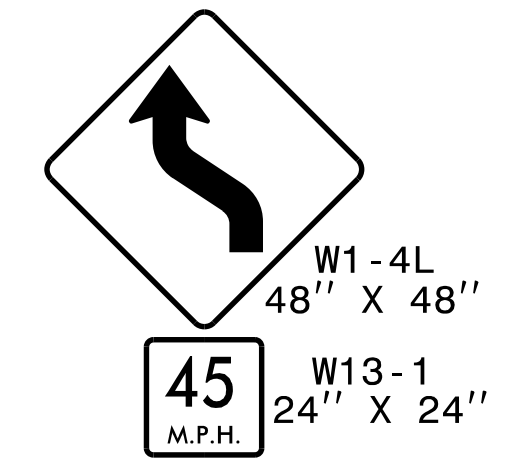


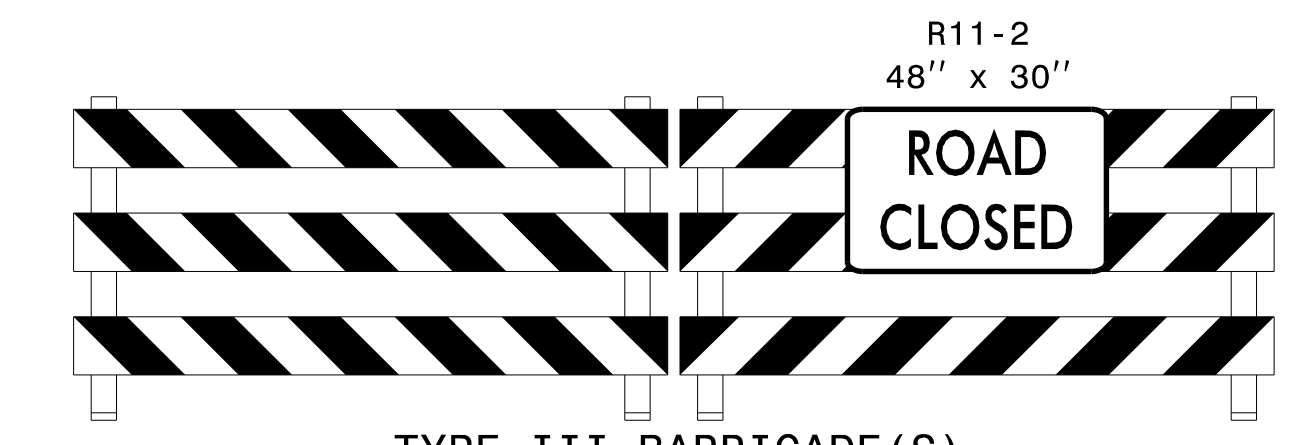
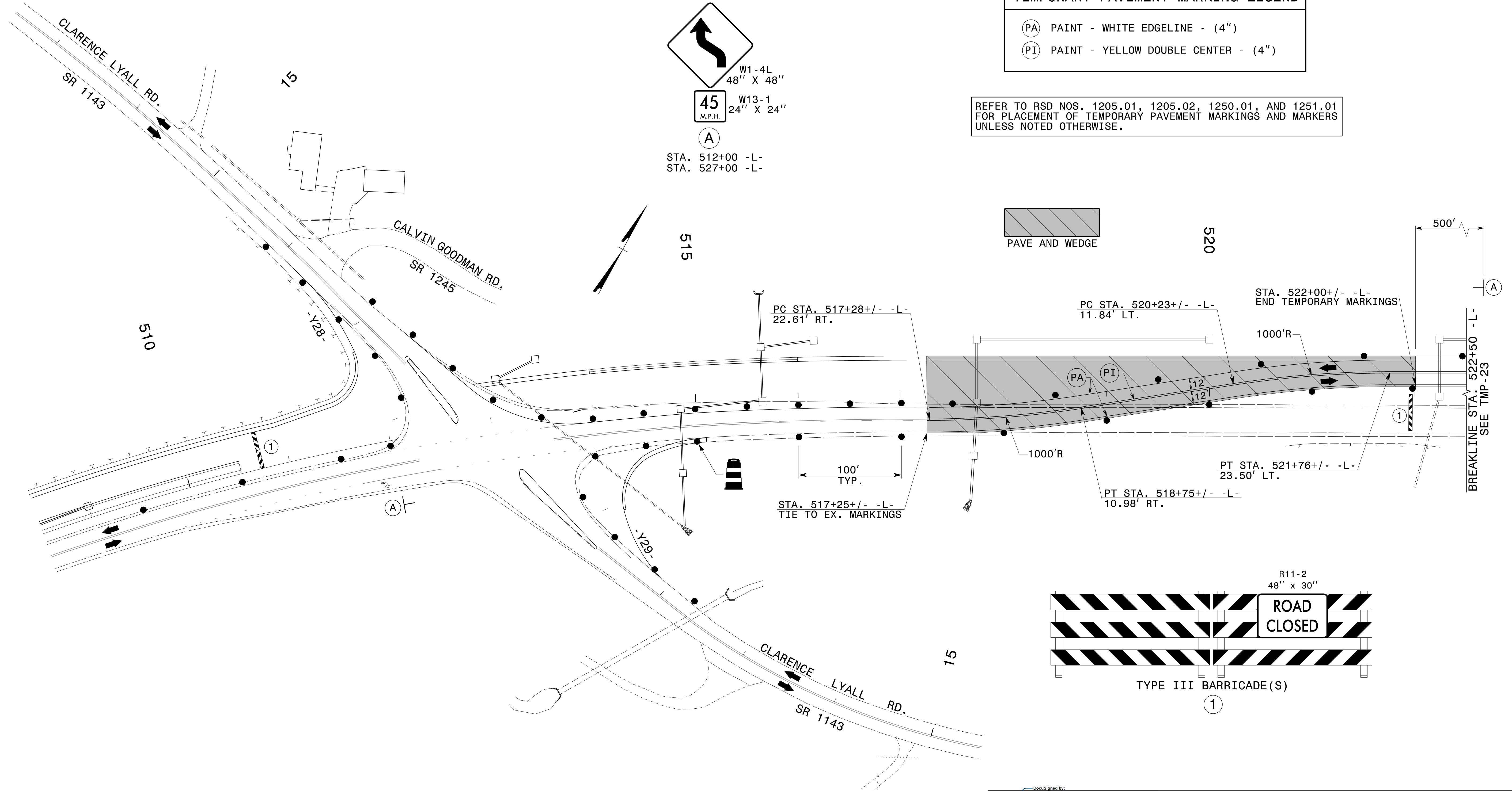
**TEMPORARY PAVEMENT MARKING LEGEND**

- (PA) PAINT - WHITE EDGELINE - (4")
- (PI) PAINT - YELLOW DOUBLE CENTER - (4")

REFER TO RSD NOS. 1205.01, 1205.02, 1250.01, AND 1251.01 FOR PLACEMENT OF TEMPORARY PAVEMENT MARKINGS AND MARKERS UNLESS NOTED OTHERWISE.

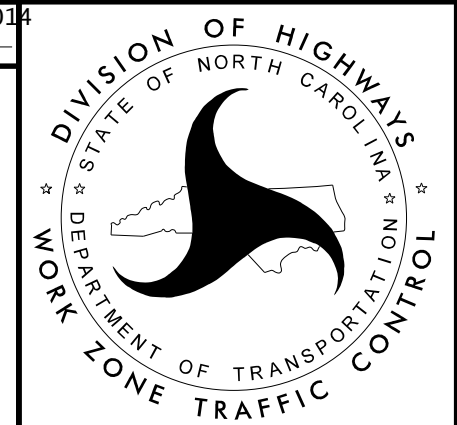
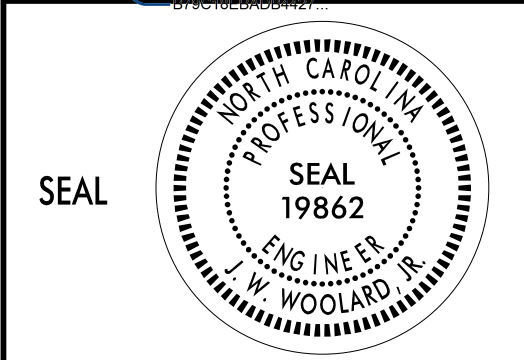


STA. 512+00 -L-  
STA. 527+00 -L-



10/24/2014  
p:\tiprojects-r\2915d\trafficcontrol\cp\R2915D\_TC\_PHL\_TMP22.dgn  
User:scodts

APPROVED: *J. W. Woolard* DATE: 10/30/2014



**PHASE I DETAILS**