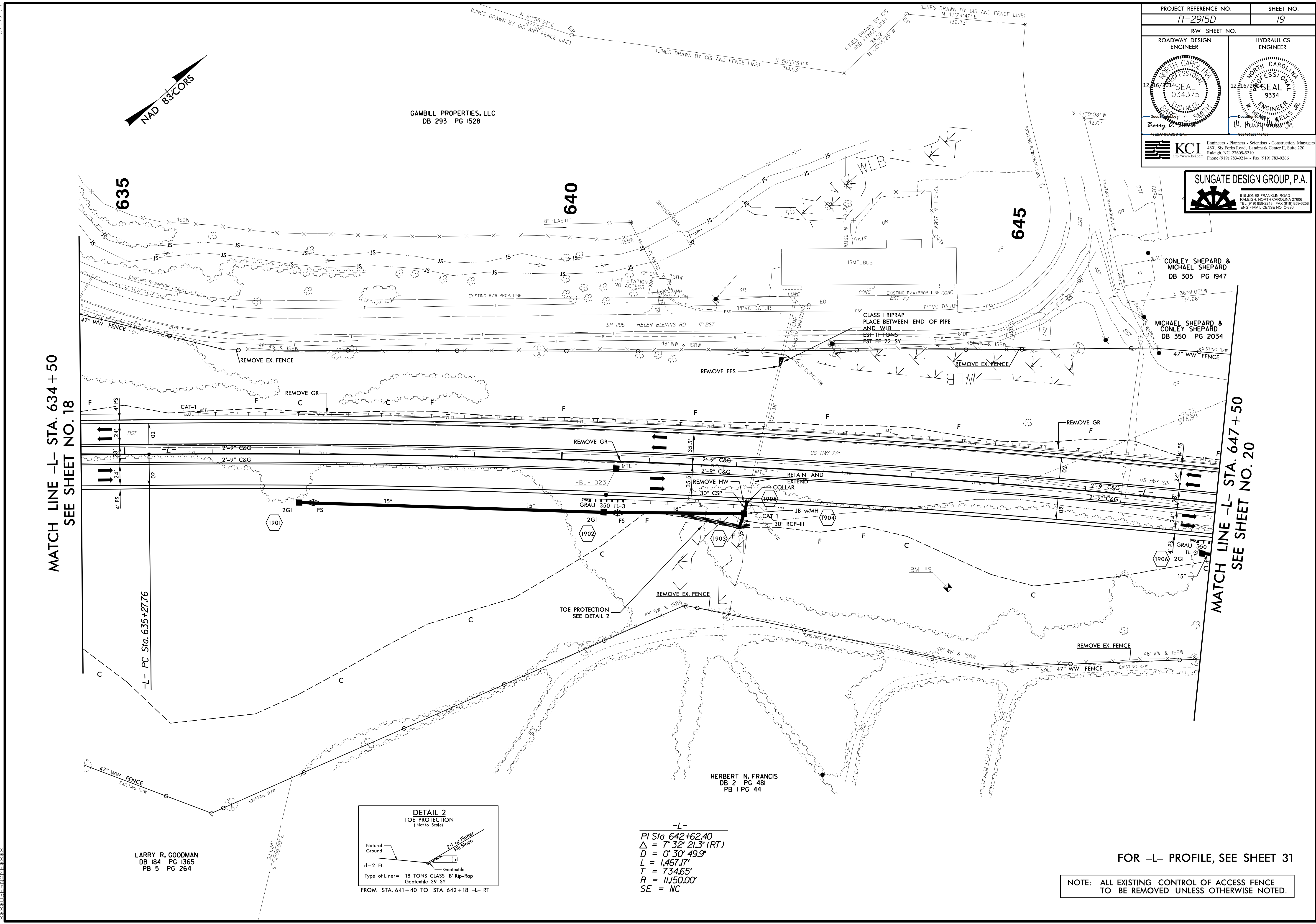


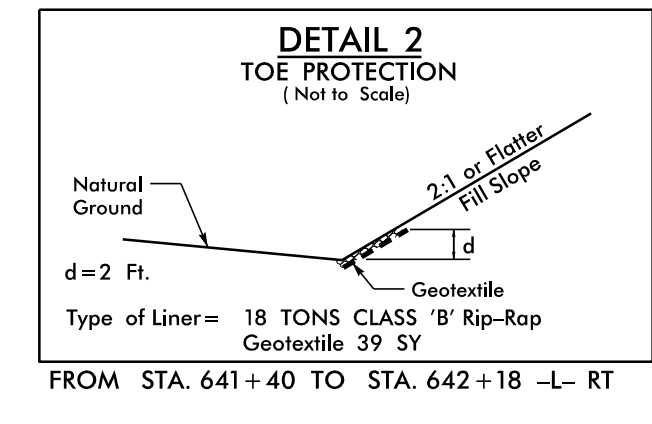
PROJECT REFERENCE NO. R-2915D		SHEET NO. 19	
RW SHEET NO.		HYDRAULICS ENGINEER	
ROADWAY DESIGN ENGINEER		PROFESSIONAL SEAL 12.26.2014 034375 BARRY C. SMITH ENGINEER	
PROFESSIONAL SEAL 12.26.2014 034375 BARRY C. SMITH ENGINEER		PROFESSIONAL SEAL 12.26.2014 9334 W. HENRY WELLS JR. ENGINEER	
 KCI Engineers • Planners • Scientists • Construction Managers 4601 Six Forks Road, Landmark Center II, Suite 220 Raleigh, NC 27609-5210 Phone (919) 783-9214 • Fax (919) 783-9266		 SUNGATE DESIGN GROUP, P.A. 915 JONES FRANKLIN ROAD RALEIGH, NORTH CAROLINA 27606 TEL (919) 899-2241 FAX (919) 899-0250 EING PRM LICENSE NO. C-869	



MATCH LINE -L- STA. 634 + 50
SEE SHEET NO. 18

MATCH LINE -L- STA. 647 + 50
SEE SHEET NO. 20

LARRY R. GOODMAN
DB 184 PG 1365
PB 5 PG 264



-L-
PI Sta. 642+62.40
 $\Delta = 7' 32" 21.3" (RT)$
 $D = 0' 30" 49.9"$
 $L = 1,467.17'$
 $T = 734.65'$
 $R = 11,500.00'$
 $SE = NC$

FOR -L- PROFILE, SEE SHEET 31

NOTE: ALL EXISTING CONTROL OF ACCESS FENCE TO BE REMOVED UNLESS OTHERWISE NOTED.

8.17.99
24-NOV-2014 08:32
C:\Users\141101101\Documents\Roadway\Proj\2915D\Roadway\Proj\2915D_Rdy_psh_19.dgn
\$\$\$\$\$USERNAME\$\$\$\$\$