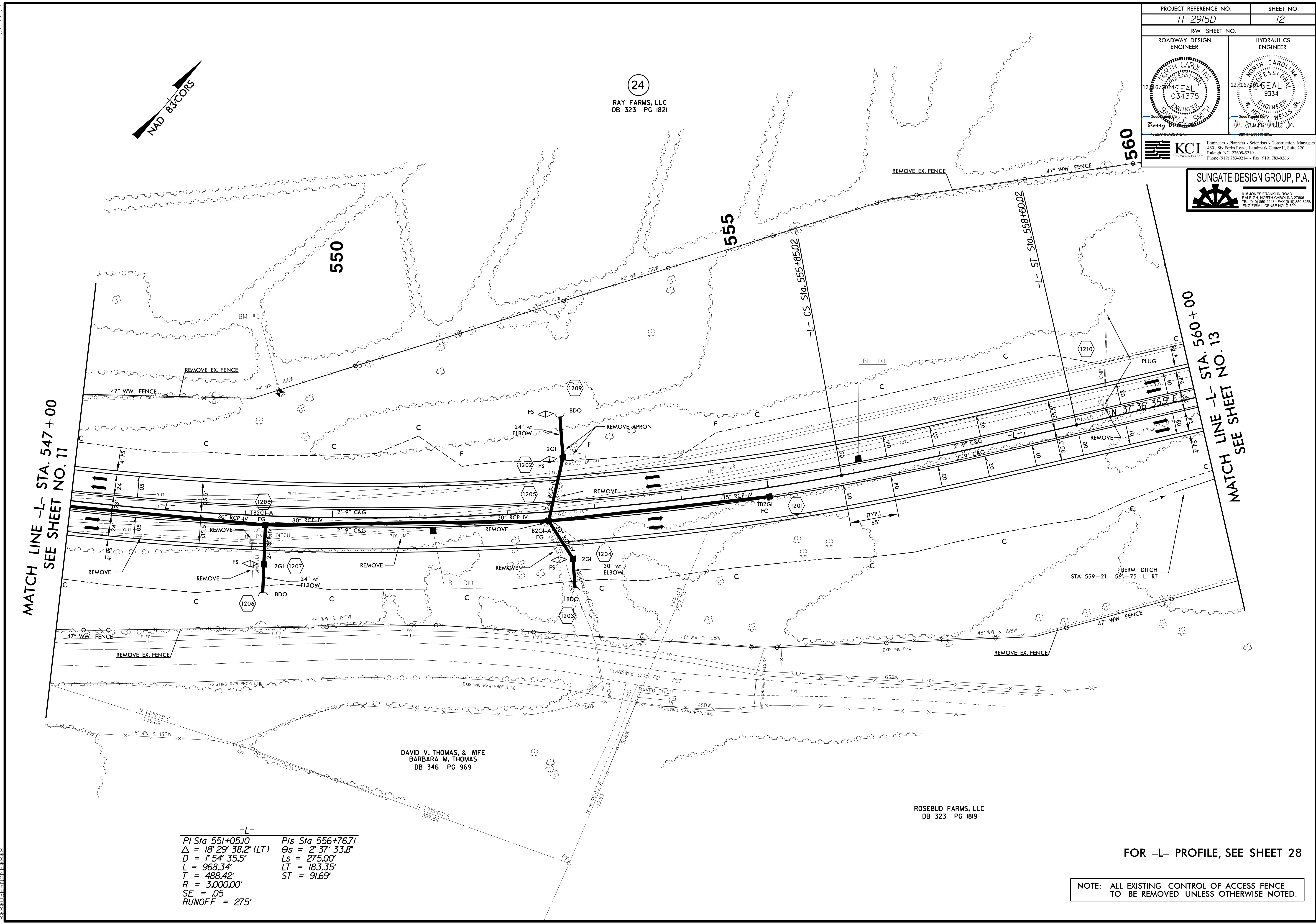


PROJECT REFERENCE NO. R-2915D	SHEET NO. 12
RW SHEET NO.	
ROADWAY DESIGN ENGINEER	HYDRAULICS ENGINEER
KCI Engineers • Planners • Scientists • Construction Managers 4601 Six Forks Road, Landmark Center II, Suite 220 Raleigh, NC 27609-5210 Phone (919) 783-9214 • Fax (919) 783-9266	

SUNGATE DESIGN GROUP, P.A.
 915 JONES FRANKLIN ROAD
 RALEIGH, NORTH CAROLINA 27608
 TEL: (919) 896-2245 FAX: (919) 896-4209
 ENG FIRM LICENSE NO. C-880



MATCH LINE -L- STA. 547+00
SEE SHEET NO. 11

MATCH LINE -L- STA. 560+00
SEE SHEET NO. 13

-L-
 PI Sta 551+05.10 Pls Sta 556+76.71
 $\Delta = 18^{\circ} 29' 38.2''$ (LT) $\Theta_s = 2^{\circ} 37' 33.8''$
 $D = 1^{\circ} 54' 35.5''$ $L_s = 275.00'$
 $L = 968.34'$ $LT = 183.35'$
 $T = 488.42'$ $ST = 91.69'$
 $R = 3,000.00'$
 $SE = .05$
 $RUNOFF = 275'$

FOR -L- PROFILE, SEE SHEET 28

NOTE: ALL EXISTING CONTROL OF ACCESS FENCE TO BE REMOVED UNLESS OTHERWISE NOTED.

8.17.99
 10 DEC 2014 10:21 AM
 C:\Users\K1110155\Documents\Roadway\Proj\R2915D_Rdwy_psh_12.dgn
 \$\$\$\$\$\$