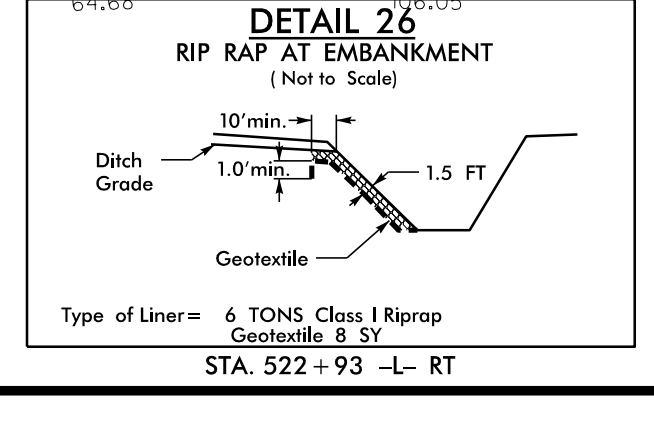
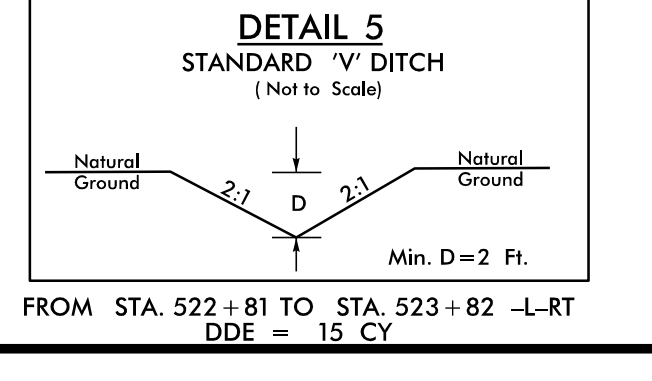
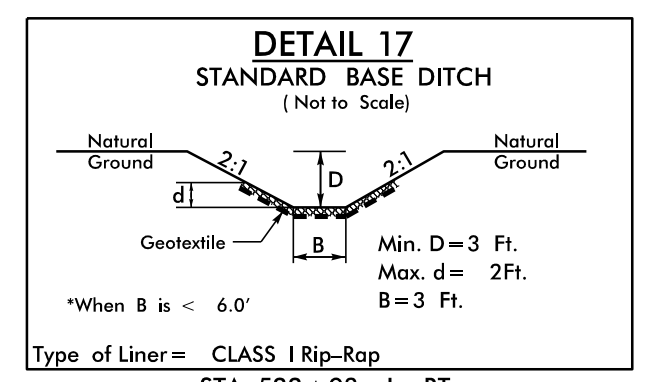
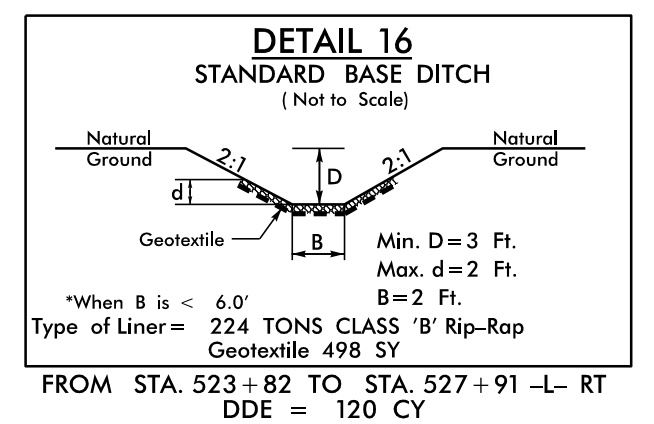
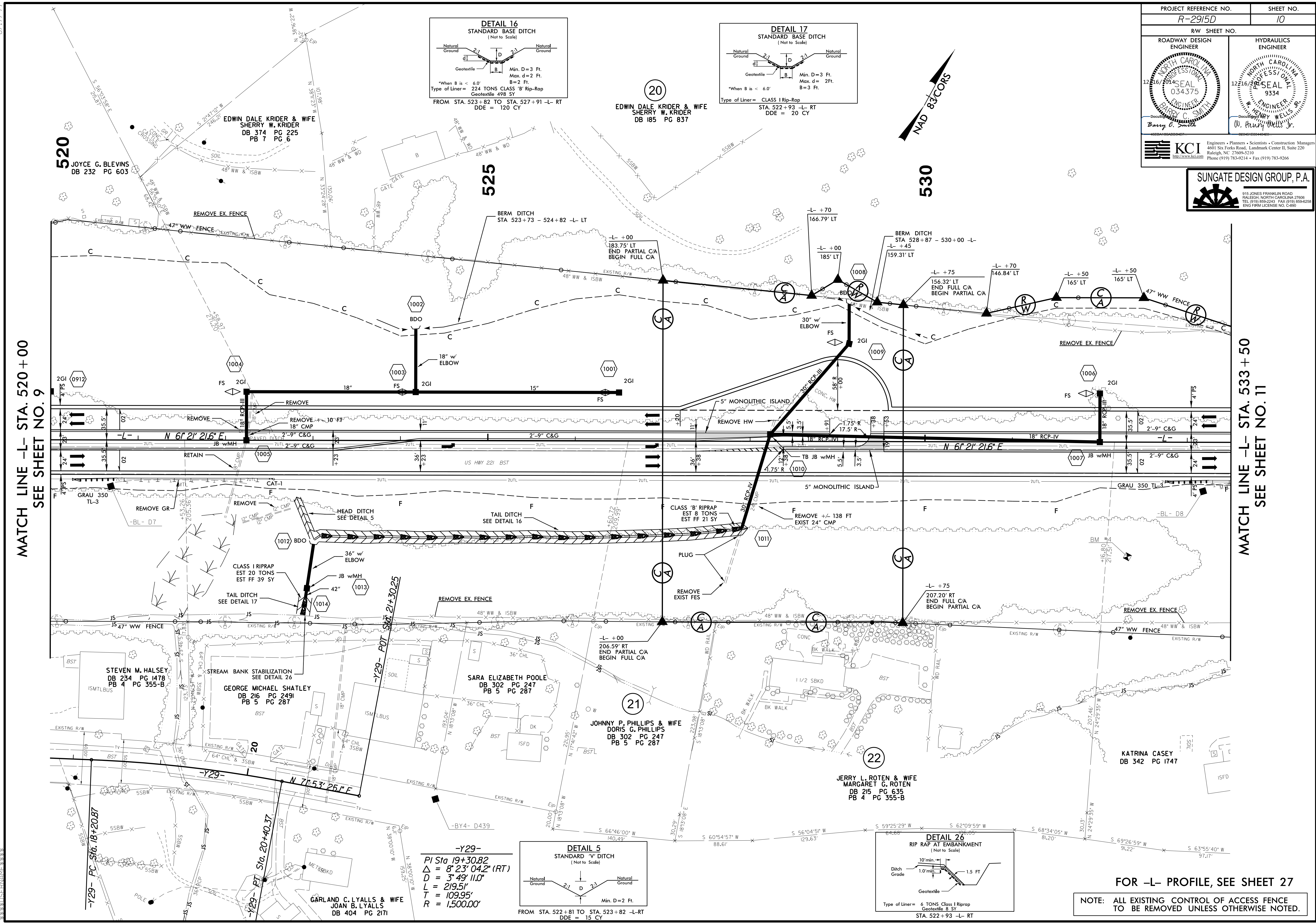


PROJECT REFERENCE NO. <b>R-2915D</b>	SHEET NO. <b>10</b>
RW SHEET NO.	
ROADWAY DESIGN ENGINEER <b>Barry C. Smith</b>	HYDRAULICS ENGINEER <b>Henry Wells Jr.</b>
KCI Engineers • Planners • Scientists • Construction Managers 4601 Six Forks Road, Landmark Center II, Suite 220 Raleigh, NC 27609-5210 Phone (919) 886-2243 Fax (919) 886-2258 Phone (919) 783-9214 Fax (919) 783-9266	
<b>SUNGATE DESIGN GROUP, P.A.</b> 915 JONES FRANKLIN ROAD RALEIGH, NORTH CAROLINA 27608 TEL: (919) 886-2243 FAX: (919) 886-2258 ENG FIRM LICENSE NO. C-860	



MATCH LINE -L- STA. 520+00  
SEE SHEET NO. 9

MATCH LINE -L- STA. 533+50  
SEE SHEET NO. 11

FOR -L- PROFILE, SEE SHEET 27

NOTE: ALL EXISTING CONTROL OF ACCESS FENCE TO BE REMOVED UNLESS OTHERWISE NOTED.

8.17.09  
 10-DEC-2014 14:03  
 MA:2014111015-R2915D-Roadway\Pro\R2915D\_Rdu\_psh\_10.dgn  
 \$\$\$\$\$\$USERNAME\$\$\$\$\$\$