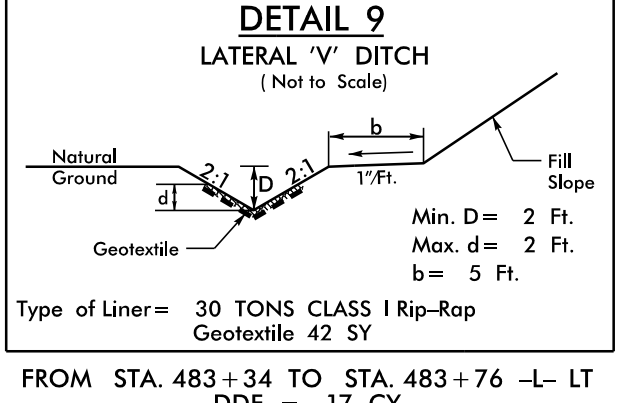
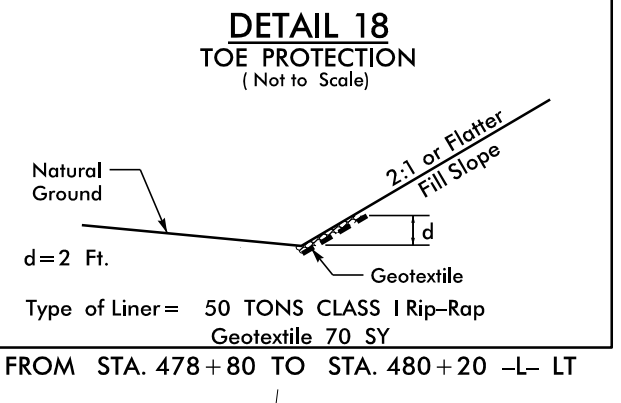
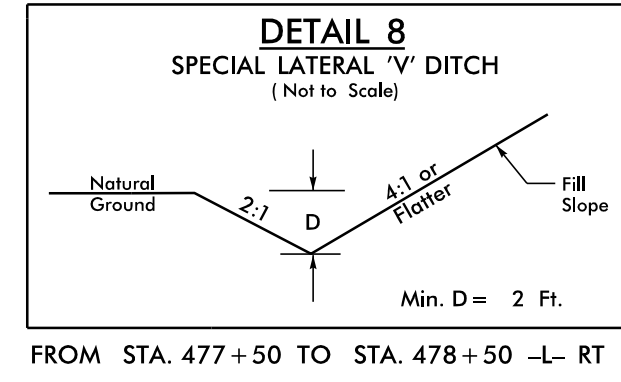
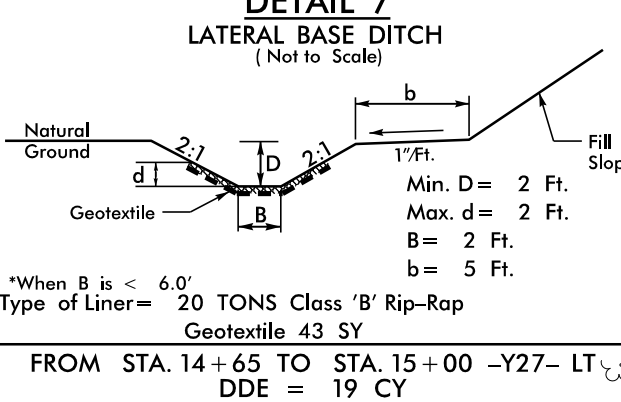
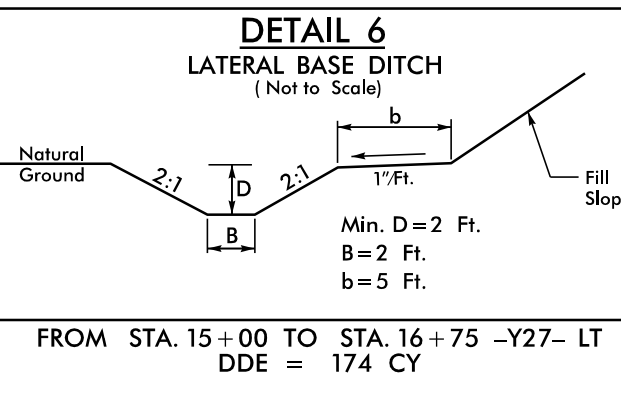
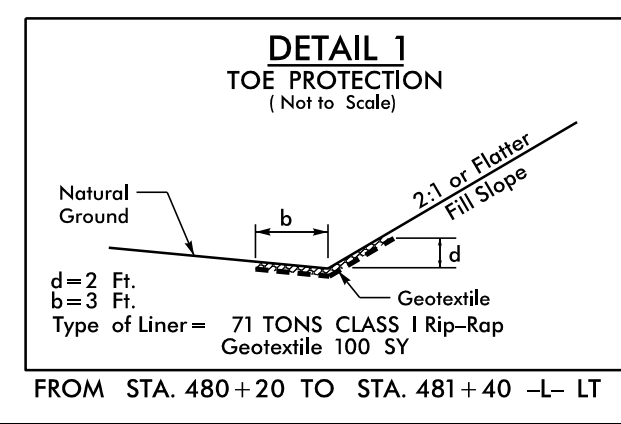
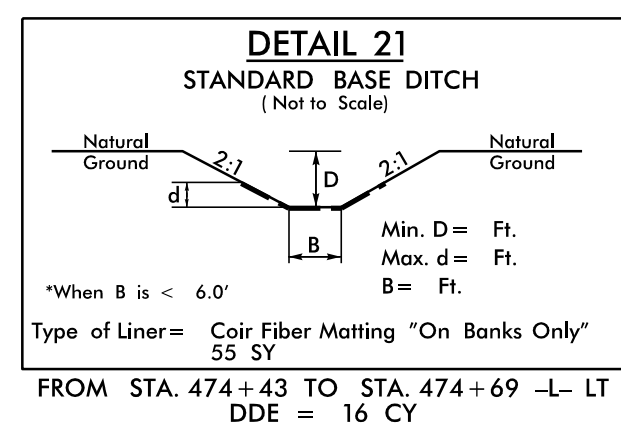
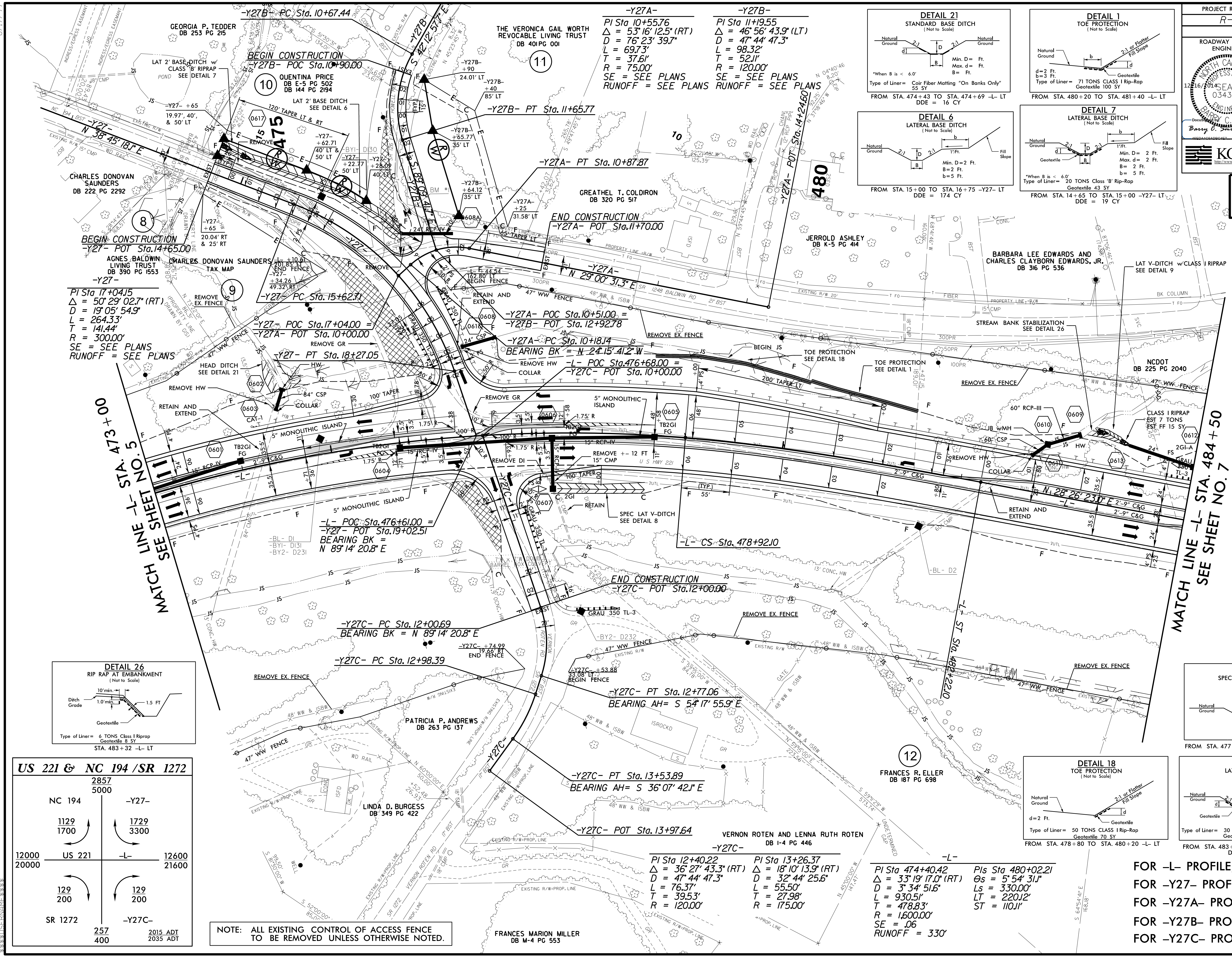


NAD 83 CORRS



-Y27-
 PI Sta 17+04.15
 $\Delta = 50^\circ 29' 02.7" (RT)$
 $D = 19' 05' 54.9"$
 $L = 264.33'$
 $T = 141.44'$
 $R = 300.00'$
 SE = SEE PLANS
 RUNOFF = SEE PLANS

-Y27A-
 PI Sta 10+55.76
 $\Delta = 53^\circ 16' 12.5" (RT)$
 $D = 76' 23' 39.7"$
 $L = 69.73'$
 $T = 37.61'$
 $R = 75.00'$
 SE = SEE PLANS
 RUNOFF = SEE PLANS

-Y27B-
 PI Sta 11+9.55
 $\Delta = 46^\circ 56' 43.9" (LT)$
 $D = 47' 44' 47.3"$
 $L = 98.32'$
 $T = 52.11'$
 $R = 120.00'$
 SE = SEE PLANS
 RUNOFF = SEE PLANS

-L- POC Sta. 476+61.00 =
-Y27- POT Sta. 19+02.51
 BEARING BK = **N 89° 14' 20.8" E**

-Y27C-
 PI Sta 12+40.22
 $\Delta = 36^\circ 27' 43.3" (RT)$
 $D = 47' 44' 47.3"$
 $L = 76.37'$
 $T = 39.53'$
 $R = 120.00'$

-Y27C-
 PI Sta 13+26.37
 $\Delta = 18^\circ 10' 13.9" (RT)$
 $D = 32' 44' 25.6"$
 $L = 55.50'$
 $T = 27.98'$
 $R = 175.00'$

-L-
 PI Sta 474+40.42
 $\Delta = 33^\circ 19' 17.0" (RT)$
 $D = 3' 34' 51.6"$
 $L = 930.51'$
 $T = 478.83'$
 $R = 1,600.00'$
 SE = .06
 RUNOFF = 330'

PIs Sta 480+02.21
 $\Delta s = 5' 54' 31.1"$
 $Ls = 330.00'$
 $LT = 220.12'$
 $ST = 110.11'$

US 221 & NC 194 /SR 1272

2857		5000	
NC 194	-Y27-	1129	1729
1700	3300	129	129
US 221	-L-	200	200
12000	21600	SR 1272	-Y27C-
20000		257	400
		2015 ADT	2035 ADT

NOTE: ALL EXISTING CONTROL OF ACCESS FENCE TO BE REMOVED UNLESS OTHERWISE NOTED.

FOR -L- PROFILE, SEE SHEET 25
 FOR -Y27- PROFILE, SEE SHEET 33
 FOR -Y27A- PROFILE, SEE SHEET 34
 FOR -Y27B- PROFILE, SEE SHEET 34
 FOR -Y27C- PROFILE, SEE SHEET 33