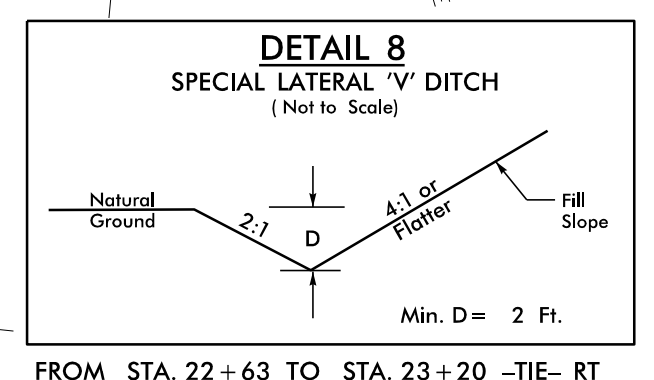
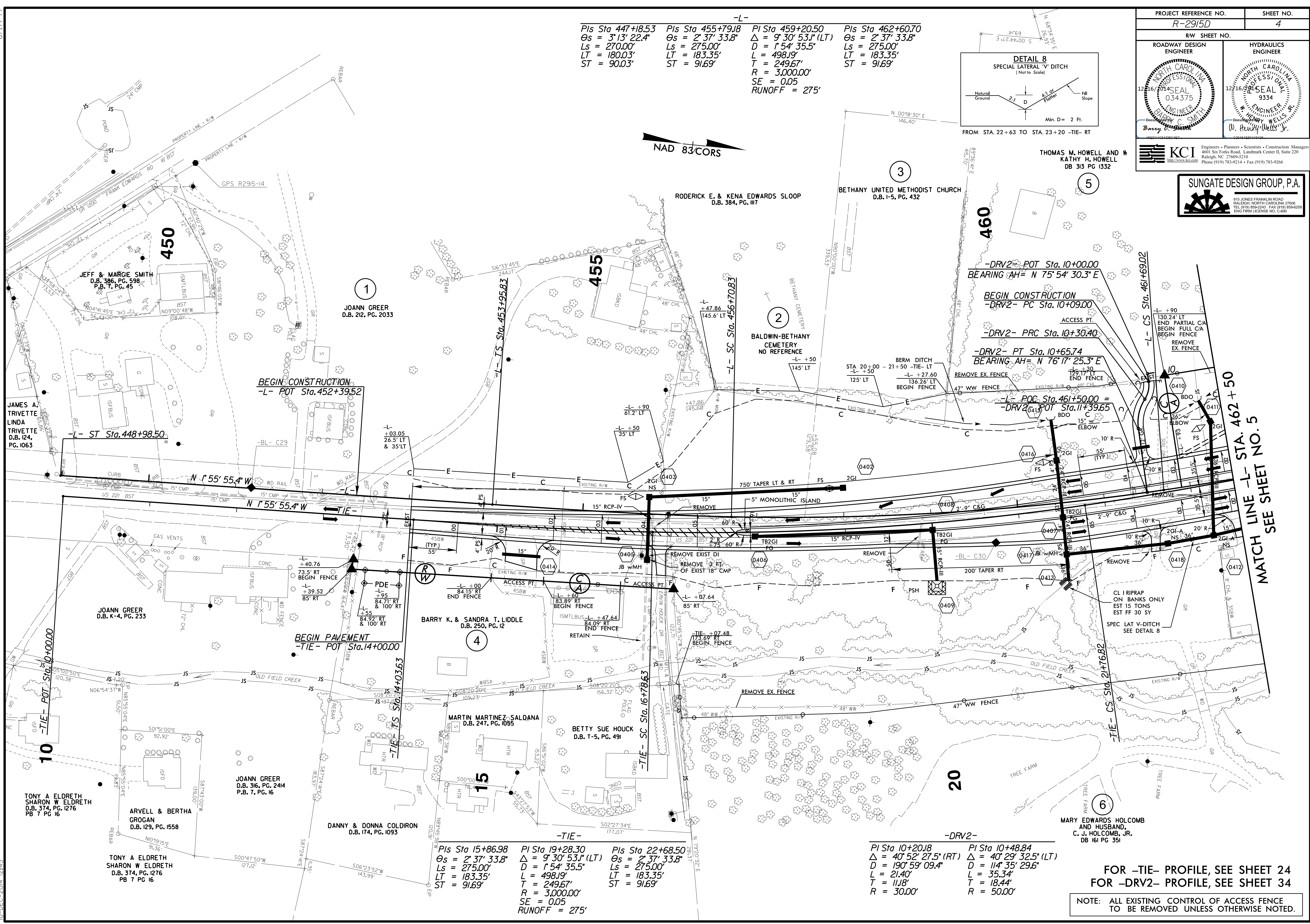


8-17-99
10-DEC-2014 12:45

Pls Sta 447+18.53 Os = 3°13'22.4" Ls = 270.00' LT = 180.03' ST = 90.03'	Pls Sta 455+79.18 Os = 2°37'33.8" Ls = 275.00' LT = 183.35' ST = 91.69'	Pls Sta 459+20.50 Δ = 9°30'53.1" (LT) D = 1°54'35.5" L = 498.19' T = 249.67' R = 3,000.00' SE = 0.05 RUNOFF = 275'	Pls Sta 462+60.70 Os = 2°37'33.8" Ls = 275.00' LT = 183.35' ST = 91.69'
---	---	---	---



PROJECT REFERENCE NO. R-2915D	SHEET NO. 4
ROADWAY DESIGN ENGINEER	HYDRAULICS ENGINEER
THOMAS M. HOWELL AND KATHY H. HOWELL DB 313 PG 1332	



Pls Sta 15+86.98 Os = 2°37'33.8" Ls = 275.00' LT = 183.35' ST = 91.69'	Pls Sta 19+28.30 Δ = 9°30'53.1" (LT) D = 1°54'35.5" L = 498.19' T = 249.67' R = 3,000.00' SE = 0.05 RUNOFF = 275'	Pls Sta 22+68.50 Os = 2°37'33.8" Ls = 275.00' LT = 183.35' ST = 91.69'
--	--	--

Pls Sta 10+20.18 Δ = 40°52'27.5" (RT) D = 190°59'09.4" L = 21.40' T = 11.18' R = 30.00'	Pls Sta 10+48.84 Δ = 40°29'32.5" (LT) D = 114°35'29.6" L = 35.34' T = 18.44' R = 50.00'
--	--

FOR -TIE- PROFILE, SEE SHEET 24
FOR -DRV2- PROFILE, SEE SHEET 34

NOTE: ALL EXISTING CONTROL OF ACCESS FENCE TO BE REMOVED UNLESS OTHERWISE NOTED.