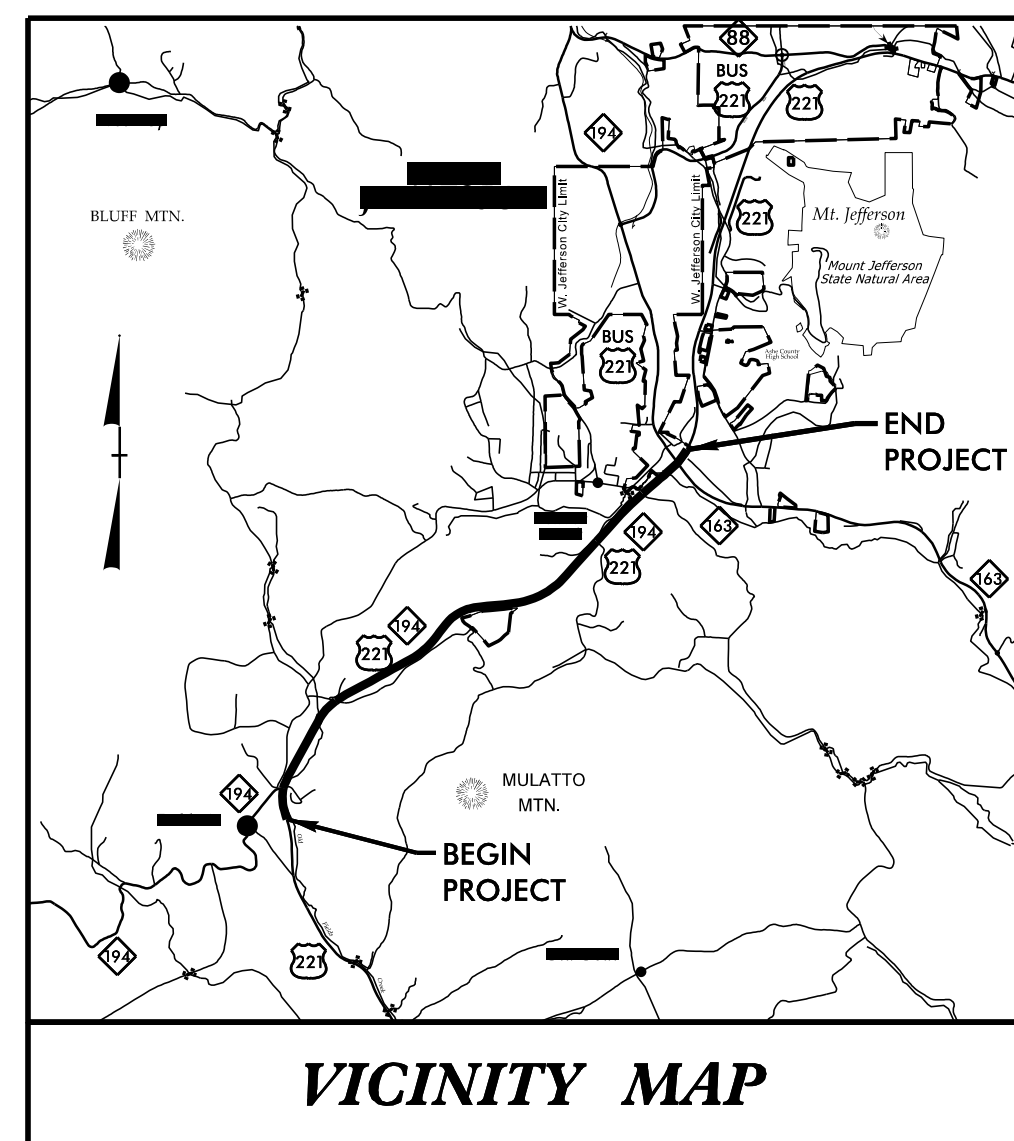
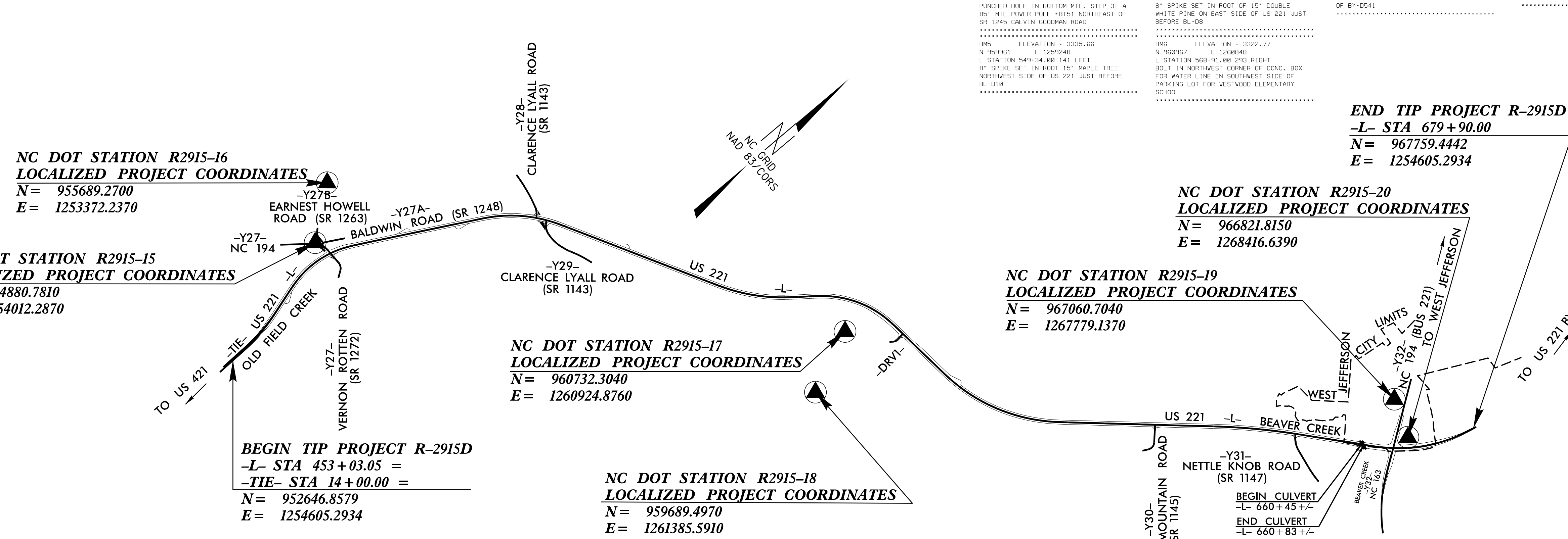


SURVEY CONTROL SHEET R-2915D

PROJECT REFERENCE NO.	SHEET NO.
R-2915D	1C-1
Location and Surveys	



BL POINT	DESC.	NORTH	EAST	ELEVATION	L STATION	OFFSET	BY1 POINT	DESC.	NORTH	EAST	ELEVATION	Y27 STATION	OFFSET	BY5 POINT	DESC.	NORTH	EAST	ELEVATION	Y30 STATION	OFFSET
BLD03	BL-D03	953979.2826	1254459.6825	3079.40	465+41.23	56.04 RT	BYD128	BY-D128	953956.6524	1253196.4464	3155.10	22+87.90	1786.61 RT	BYD540	BY-D540	963727.9230	1265531.2200	3051.28	18+84.85	36.69 LT



DATUM DESCRIPTION

THE LOCALIZED COORDINATE SYSTEM DEVELOPED FOR THIS PROJECT IS BASED ON THE STATE PLANE COORDINATES ESTABLISHED BY NCDOT FOR MONUMENT "R2915-15"

WITH NAD 83/CORS STATE PLANE GRID COORDINATES OF
 NORTHING: 954880.7810(±) EASTING: 1254012.2870(±)
 ELEVATION: 3097.5210(±)

THE AVERAGE COMBINED GRID FACTOR USED ON THIS PROJECT (GROUND TO GRID) IS: 0.99991292

THE N.C. LAMBERT GRID BEARING AND LOCALIZED HORIZONTAL GROUND DISTANCE FROM "R2915-15" TO -L- STATION 453+03.05 IS
 S 14°52'00" E 2311.2917

ALL LINEAR DIMENSIONS ARE LOCALIZED HORIZONTAL DISTANCES VERTICAL DATUM USED IS NAVD 88

NOTES:

- THE SITE CALIBRATION SHOWN IS BASED UPON A NETWORK TIED TO THE HARN (HIGH ACCURACY REFERENCE NETWORK) NAD 83/RS ADJUSTMENT. THIS CALIBRATION WILL ALLOW THE END USER TO WORK WITHIN THE SAME COORDINATE SYSTEM WHEN USING RTK (REAL TIME KINEMATIC) GPS AND A LOCAL BASE STATION. IF ANOTHER SYSTEM SUCH AS VRS (VIRTUAL REFERENCE STATION) IS USED, ADDITIONAL FIELD TIES MAY BE NEEDED TO REDUCE POSSIBLE ERRORS, OR BIASES.
- THE CONTROL DATA FOR THIS PROJECT CAN BE FOUND ELECTRONICALLY BY SELECTING PROJECT CONTROL DATA AT:
[HTTP://WWW.NCDOT.ORG/DOH/PRECONSTRUCT/HIGHWAY/LOCATION/PROJECT/](http://www.ncdot.org/DOH/PRECONSTRUCT/HIGHWAY/LOCATION/PROJECT/)
 THE FILES TO BE FOUND ARE AS FOLLOWS:
 R2915D_LS_GPSALIB.HTML
 R2915D_LS_WGS84.TXT
 R2915D_LS_LOCAL.TXT
 R2915D_LS_CONTROL.TXT

THE WGS84 AND LOCAL FILES ARE COMMA DELIMITED AND CAN BE USED TO REPRODUCE THE SITE CALIBRATION FOR THE END USER'S GPS EQUIPMENT. IF FURTHER INFORMATION IS NEEDED, PLEASE CONTACT THE LOCATION AND SURVEYS UNIT.

☉ INDICATES GEODETIC CONTROL MONUMENTS USED OR SET FOR HORIZONTAL PROJECT CONTROL BY THE NCDOT LOCATION AND SURVEYS UNIT.
 PROJECT CONTROL ESTABLISHED USING GLOBAL POSITIONING SYSTEM.
 NETWORK ESTABLISHED FROM EXISTING HARN MONUMENTATION
 SEE GPS CALIBRATION SHEET FOR HORIZONTAL AND VERTICAL COORDINATE VALUES.

NOTE: DRAWING NOT TO SCALE

6/2/2019
8:51:55 AM
R-2915-15-1c-1.dgn
Division