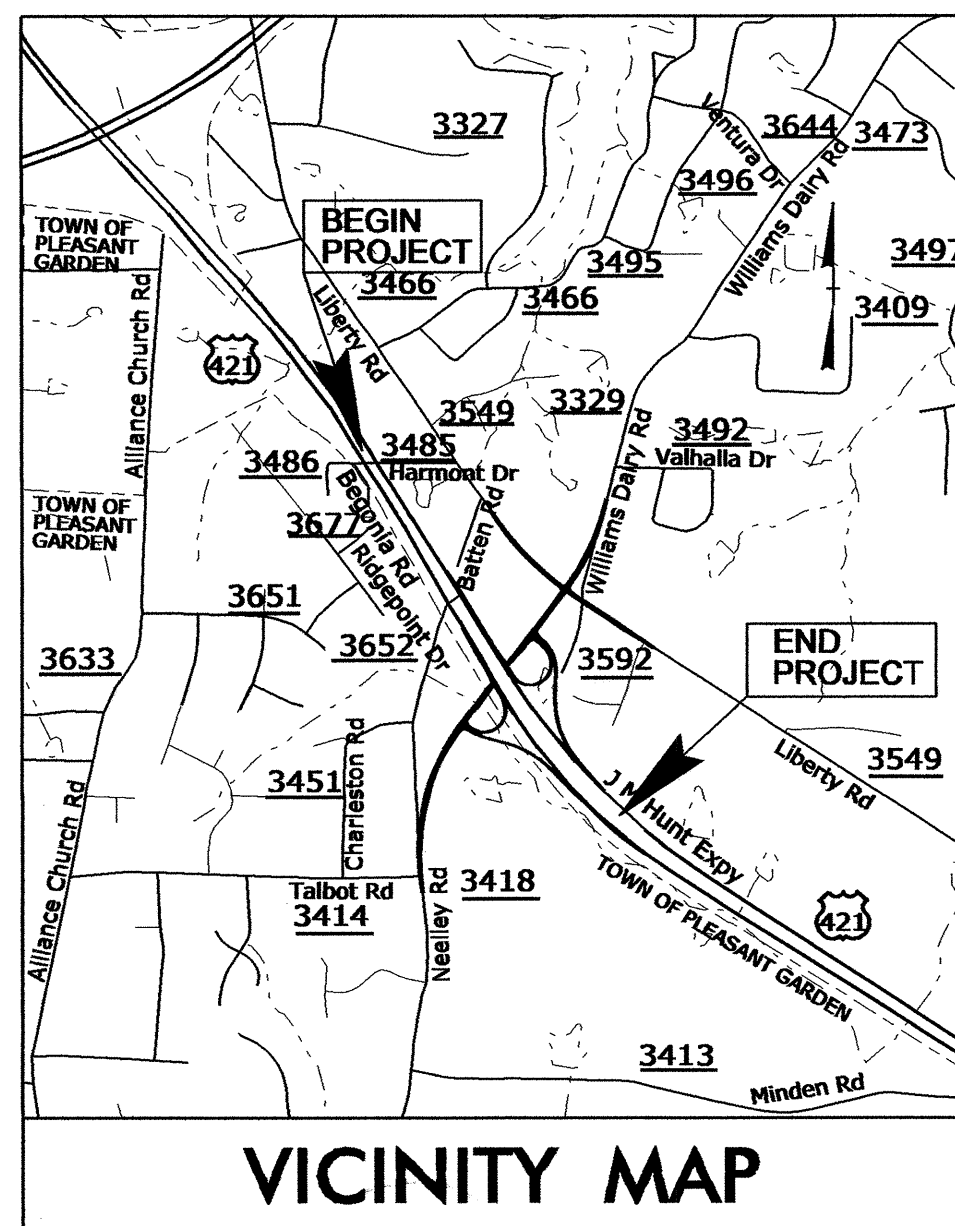


STATE OF NORTH CAROLINA
DIVISION OF HIGHWAYS

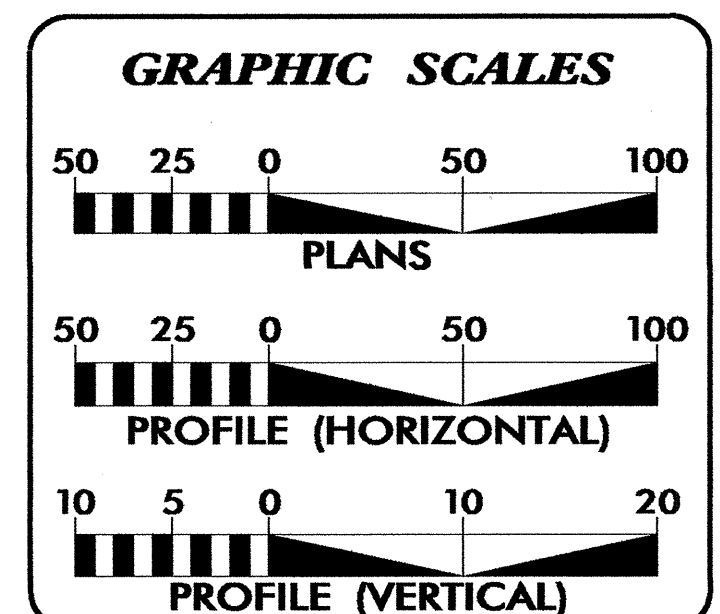
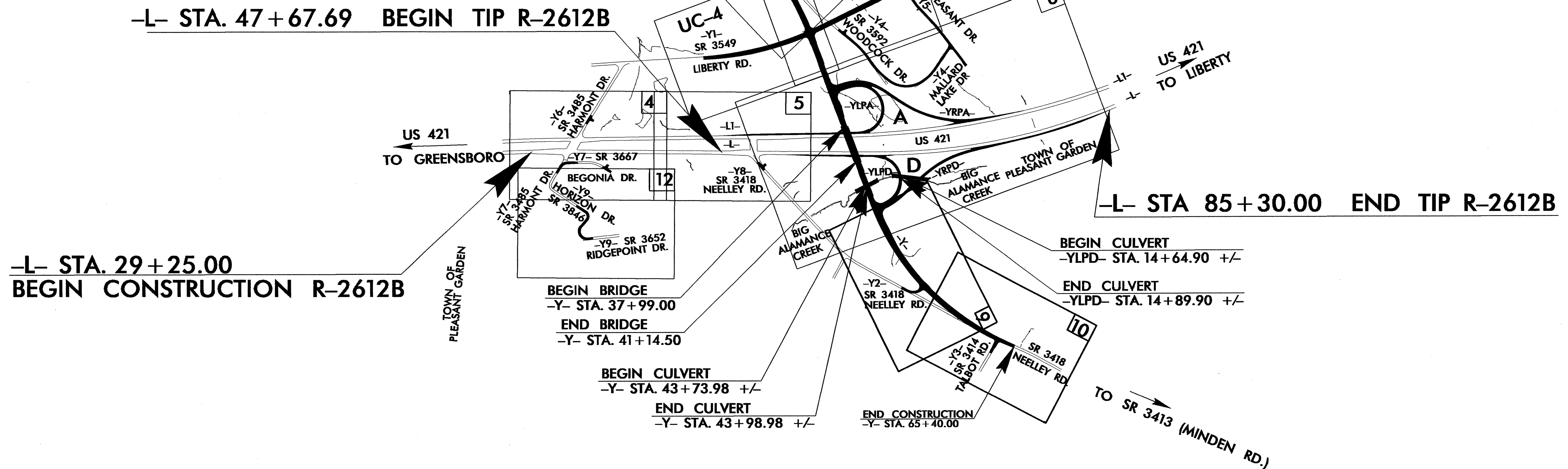
**UTILITY CONSTRUCTION PLANS
GUILFORD COUNTY**

LOCATION: US 421 AT 3418 (NEELLEY ROAD) SOUTH OF GREENSBORO

TYPE OF WORK: UTILITIES



TIP PROJECT: R-2612B

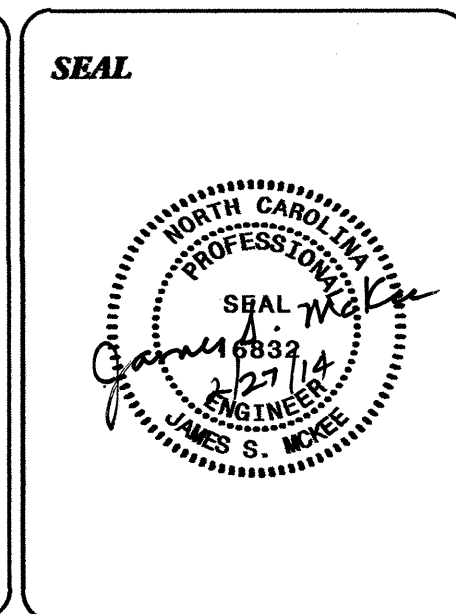


INDEX OF SHEETS

SHEET NO.	DESCRIPTION
UC-1	TITLE SHEET
UC-2	UTILITY SYMBOLOGY
UC-3	NOTES
UC-3A	DETAILS
UC-4 THRU UC-5	UTILITY CONSTRUCTION SHEETS

WATER AND SEWER OWNERS ON PROJECT

(1) WATER CITY OF GREENSBORO
(2) SANITARY SEWER CITY OF GREENSBORO



PREPARED IN THE OFFICE OF:
**DIVISION OF HIGHWAYS
UTILITIES UNIT
UTILITIES ENGINEERING**

1555 MAIL SERVICES CENTER
RALEIGH, NC 27609-1555
PHONE (919) 707-6600
FAX (919) 250-4151

Roger Worthington, P.E. UTILITIES SECTION ENGINEER
Steve McKee, P.E. UTILITIES SQUAD LEADER PROJECT ENGINEER
Jamshid Hafshejani UTILITIES PROJECT DESIGNER

STATE OF NORTH CAROLINA DIVISION OF HIGHWAYS

UTILITIES PLAN SHEET SYMBOLS

PROPOSED WATER SYMBOLS

Water Line (Sized as Shown)	----- 12" W -----
11¼ Degree Bend	----- +-----
22½ Degree Bend	----- +X-----
45 Degree Bend	----- +X-----
90 Degree Bend	----- +-----
Plug	----- -----
Tee	----- +-----
Cross	----- +-----
Reducer	----- ▶-----
Gate Valve	----- GV-----
Butterfly Valve	----- BV-----
Tapping Valve	----- TV-----
Line Stop	----- LS-----
Line Stop with Bypass	----- LS/BP-----
Blow Off	----- BO-----
Fire Hydrant	----- PFH-----
Relocate Fire Hydrant	----- RFH-----
Remove Fire Hydrant	----- REM FH-----
Water Meter	----- PWM-----
Relocate Water Meter	----- RWM-----
Remove Water Meter	----- REM WM-----
Water Pump Station	----- PS(W)-----
RPZ Backflow Preventer	----- PRPZ-----
DCV Backflow Preventer	----- PBEP-----
Relocate RPZ Backflow Preventer	----- RRPZ-----
Relocate DCV Backflow Preventer	----- RBEP-----

PROPOSED SEWER SYMBOLS

Gravity Sewer Line (Sized as Shown)	----- 12" SS -----
Force Main Sewer Line (Sized as Shown)	----- 12" FSS -----
Manhole (Sized per Note)	----- •-----
Sewer Pump Station	----- PS(SS)-----

PROPOSED MISCELLANEOUS UTILITIES SYMBOLS

Power Pole	----- ○-----
Telephone Pole	----- -○-----
Joint Use Pole	----- -○-----
Telephone Pedestal	----- TEL PED-----
Utility Line by Others (Type as Shown)	----- PROP O/H POW LINES-----
Trenchless Installation	----- 12" TL INSTALL-----
Encasement by Open Cut	----- 24" ENCAS BY OC-----
Encasement	----- 24" ENCASEMENT-----

Thrust Block	----- -----
Air Release Valve	----- AR-----
Utility Vault	----- UV-----
Concrete Pier	----- CP-----
Steel Pier	----- SP-----
Plan Note	----- NOTE-----
Pay Item Note	----- PAY ITEM-----

EXISTING UTILITIES SYMBOLS

Power Pole	----- •-----	*Underground Power Line	----- P-----
Telephone Pole	----- •-----	*Underground Telephone Cable	----- T-----
Joint Use Pole	----- •-----	*Underground Telephone Conduit	----- TC-----
Utility Pole	----- •-----	*Underground Fiber Optics Telephone Cable	----- T Fo-----
Utility Pole with Base	----- □-----	*Underground TV Cable	----- TV-----
H-Frame Pole	----- •-----	*Underground Fiber Optics TV Cable	----- Tv Fo-----
Power Transmission Line Tower	----- ⊠-----	*Underground Gas Pipeline	----- G-----
Water Manhole	----- ⊗-----	Aboveground Gas Pipeline	----- A/G Gas-----
Power Manhole	----- ⊗-----	*Underground Water Line	----- W-----
Telephone Manhole	----- ⊗-----	Aboveground Water Line	----- A/G Water-----
Sanitary Sewer Manhole	----- ⊗-----	*Underground Gravity Sanitary Sewer Line	----- SS-----
Hand Hole for Cable	----- ⊠-----	Aboveground Gravity Sanitary Sewer Line	----- A/G Sanitary Sewer-----
Power Transformer	----- ⊠-----	*Underground SS Forced Main Line	----- FSS-----
Telephone Pedestal	----- ⊠-----	Underground Unknown Utility Line	----- ?UTL-----
CATV Pedestal	----- ⊠-----	SUE Test Hole	----- ⊗-----
Gas Valve	----- ◇-----	Water Meter	----- ○-----
Gas Meter	----- ◇-----	Water Valve	----- ⊗-----
Located Miscellaneous Utility Object	----- ○-----	Fire Hydrant	----- ◇-----
Abandoned According to Utility Records	----- AATUR-----	Sanitary Sewer Cleanout	----- ⊗-----
End of Information	----- E.O.I.-----		

*For Existing Utilities
Utility Line Drawn from Record -----
(Type as Shown)
Designated Utility Line -----
(Type as Shown)

5/14/09
26-FEB-2014 08:05
ucp\nc\proj\2612B_Ut_(r-dy_sht*)_UC-2(utl_const_Sht#*)_psh.dgn
REV: 2/1/2012

5/14/99

26-FEB-2014 09:06
C:\JULIEN\PROJECTS\UC-3\UC-3(ut)_const_Sht#1_psh.dgn
11:11 AM
JULIEN

UTILITY CONSTRUCTION

PROJECT REFERENCE NO.	SHEET NO.
R-2612B	UC-3
DESIGNED BY: JH	
DRAWN BY: JH	
CHECKED BY: JSM	
APPROVED BY: JSM	
REVISED:	
NORTH CAROLINA DEPARTMENT OF TRANSPORTATION UTILITIES ENGINEERING SEC. PHONE: (919) 707-6690 FAX: (919) 250-4151	
UTILITY CONSTRUCTION PLANS ONLY	

GENERAL NOTES:

1. THE PROPOSED UTILITY CONSTRUCTION SHALL MEET THE APPLICABLE REQUIREMENTS OF THE NC DEPARTMENT OF TRANSPORTATION'S "STANDARD SPECIFICATIONS FOR ROADS AND STRUCTURES" DATED JANUARY 2012.
2. THE EXISTING UTILITIES BELONG TO CITY OF GREENSBORO.
3. ALL WATER LINES TO BE INSTALLED WITHIN COMPLIANCE OF THE RULES AND REGULATIONS OF THE NORTH CAROLINA DEPARTMENT OF ENVIRONMENTAL AND NATURAL RESOURCES, DIVISION OF WATER RESOURCES, PUBLIC WATER SUPPLY SECTION. ALL SEWER LINES TO BE INSTALLED WITHIN COMPLIANCE OF THE RULES AND REGULATIONS OF THE NORTH CAROLINA DEPARTMENT OF ENVIRONMENT AND NATURAL RESOURCES, DIVISION OF WATER RESOURCES, WATER QUALITY SECTION. PERFORM ALL WORK IN ACCORDANCE WITH THE APPLICABLE PLUMBING CODES.
4. THE UTILITY OWNER OWNS THE EXISTING UTILITY FACILITIES AND WILL OWN THE NEW UTILITY FACILITIES AFTER ACCEPTANCE BY THE DEPARTMENT. THE DEPARTMENT OWNS THE CONSTRUCTION CONTRACT AND HAS ADMINISTRATIVE AUTHORITY. COMMUNICATIONS AND DECISIONS BETWEEN THE CONTRACTOR AND UTILITY OWNER ARE NOT BINDING UPON THE DEPARTMENT OR THIS CONTRACT UNLESS AUTHORIZED BY THE ENGINEER. AGREEMENTS BETWEEN THE UTILITY OWNER AND CONTRACTOR FOR THE WORK THAT IS NOT PART OF THIS CONTRACT OR IS SECONDARY TO THIS CONTRACT ARE ALLOWED, BUT ARE NOT BINDING UPON THE DEPARTMENT.
5. PROVIDE ACCESS FOR THE DEPARTMENT PERSONNEL AND THE OWNER'S REPRESENTATIVES TO ALL PHASES OF CONSTRUCTION. NOTIFY DEPARTMENT PERSONNEL AND THE UTILITY OWNER TWO WEEKS PRIOR TO COMMENCEMENT OF ANY WORK AND ONE WEEK PRIOR TO SERVICE INTERRUPTION. KEEP UTILITY OWNERS' REPRESENTATIVES INFORMED OF WORK PROGRESS AND PROVIDE OPPROTUNITY FOR INSPECTION OF CONSTRUCTION AND TESTING.

6. THE PLANS DEPICT THE BEST AVAILABLE INFORMATION FOR THE LOCATION, SIZE, AND TYPE OF MATERIAL FOR ALL EXISTING UTILITIES. MAKE INVESTIGATIONS FOR DETERMINING THE EXACT LOCATION, SIZE, AND TYPE MATERIAL OF THE EXISTING FACILITIES AS NECESSARY FOR THE CONSTRUCTION OF THE PROPOSED UTILITIES AND FOR AVOIDING DAMAGE TO EXISTING FACILITIES. REPAIR ANY DAMAGE INCURRED TO EXISTING FACILITIES TO THE ORIGINAL OR BETTER CONDITION AT NO ADDITIONAL COST TO THE DEPARTMENT.
7. MAKE FINAL CONNECTIONS OF THE NEW WORK TO THE EXISTING SYSTEM WHERE INDICATED ON THE PLANS, AS REQUIRED TO FIT THE ACTUAL CONDITIONS, OR AS DIRECTED.
8. MAKE CONNECTIONS BETWEEN EXISTING AND PROPOSED UTILITIES AT TIMES MOST CONVENIENT TO THE PUBLIC, WITHOUT ENDANGERING THE UTILITY SERVICE, AND IN ACCORDANCE WITH THE UTILITY OWNER'S REQUIREMENTS. MAKE CONNECTIONS ON WEEKENDS, AT NIGHT, AND ON HOLIDAYS IF NECESSARY.
9. ALL UTILITY MATERIALS SHALL BE APPROVED PRIOR TO DELIVERY TO THE PROJECT. SEE 1500-7, " SUBMITTALS AND RECORDS" IN SECTION 1500 OF THE STANDARD SPECIFICATIONS.

PROJECT SPECIFIC NOTES:

1. PROPOSED WATER LINE FROM -X- LINE STATION XX+XX TO -X- LINE STATION XX+XX SHALL BE D.I.R.J. (DUCTILE IRON RESTRAINED JOINT) PIPE. (EXAMPLE)
2. NITRILE GASKETS SHALL BE USED FROM -X- LINE STATION XX+XX TO -X- LINE STATION XX+XX DUE TO PETROLEUM CONTAMINATED SOILS. (EXAMPLE)
3. CONTRACTOR'S ATTENTION IS DIRECTED TO SECTIONS 102, 107, AND 1550 OF THE STANDARD SPECIFICATIONS CONCERNING TRENCHLESS INSTALLATION. IT IS CONTRACTOR'S RESPONSIBILITY TO HAVE BORE DESIGNED AND SEALED BY A LICENSED NORTH CAROLINA PROFESSIONAL ENGINEER. NO DAMAGE IS ALLOWED TO RIVER, WETLANDS, OR BUFFER ZONES.
4. IF HDPE PIPE IS INSTALLED BY DIRECTIONAL DRILL. IT SHALL BE FILLED WITH WATER AND NOT BE CONNECTED TO ANY OTHER PIPE OR FITTINGS FOR ONE WEEK FROM THE TIME OF INSTALLATION.

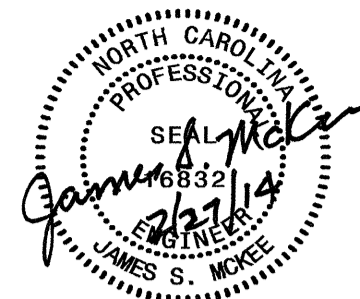
UTILITY CONSTRUCTION

7. (EXAMPLE) SPACE FOR EXTRA NOTES ON END OF COLUMN.

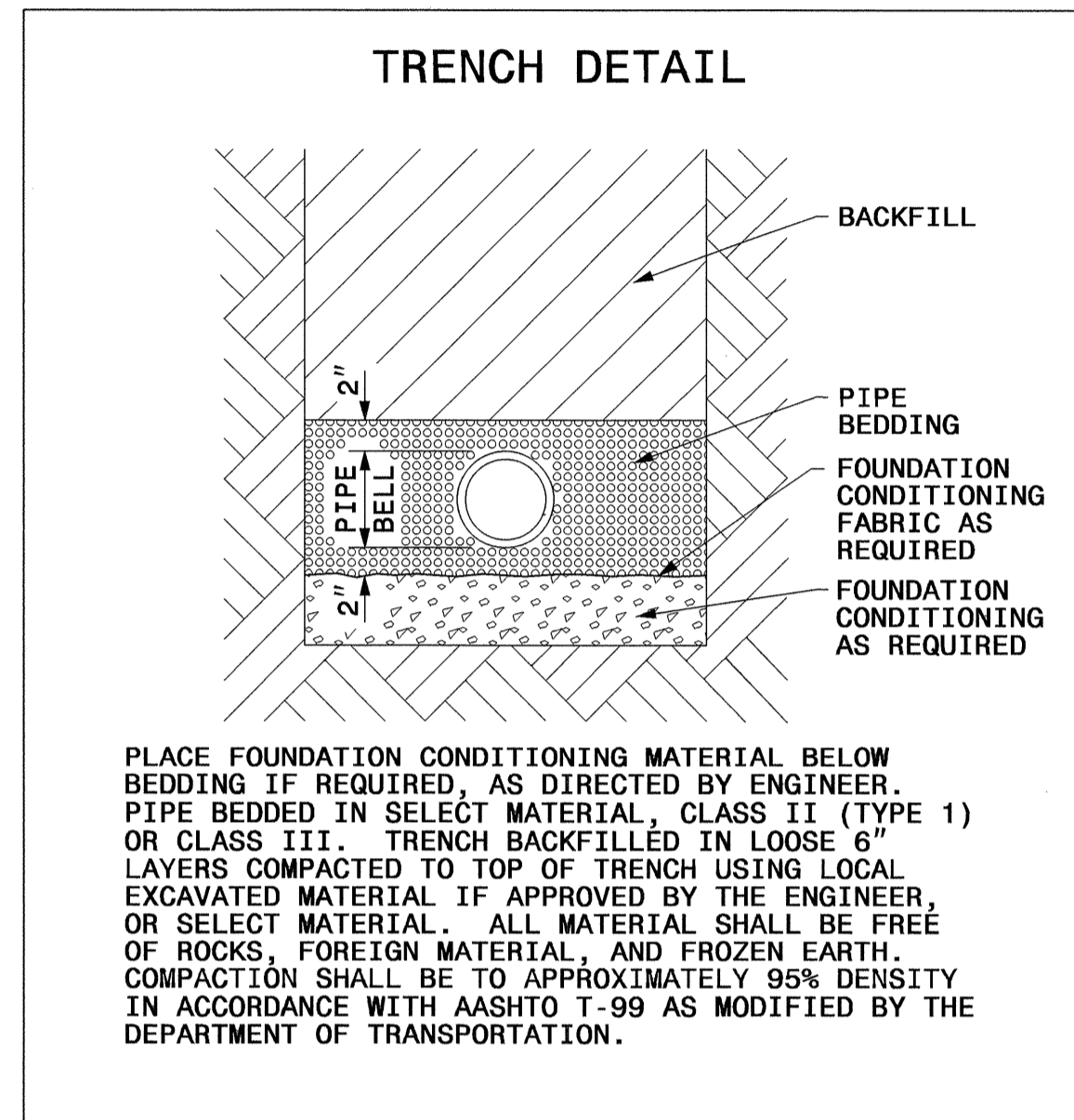
LIST OF STANDARD DRAWINGS

- 1515.01 WATER METER
- 1515.02 FIRE HYDRANT
- 1520.01 SEWER CLEAN OUT
- 1525.06 PRECAST CONCRETE SANITARY SEWER MANHOLE WITH CAST-IN-PLACE BOTTOM

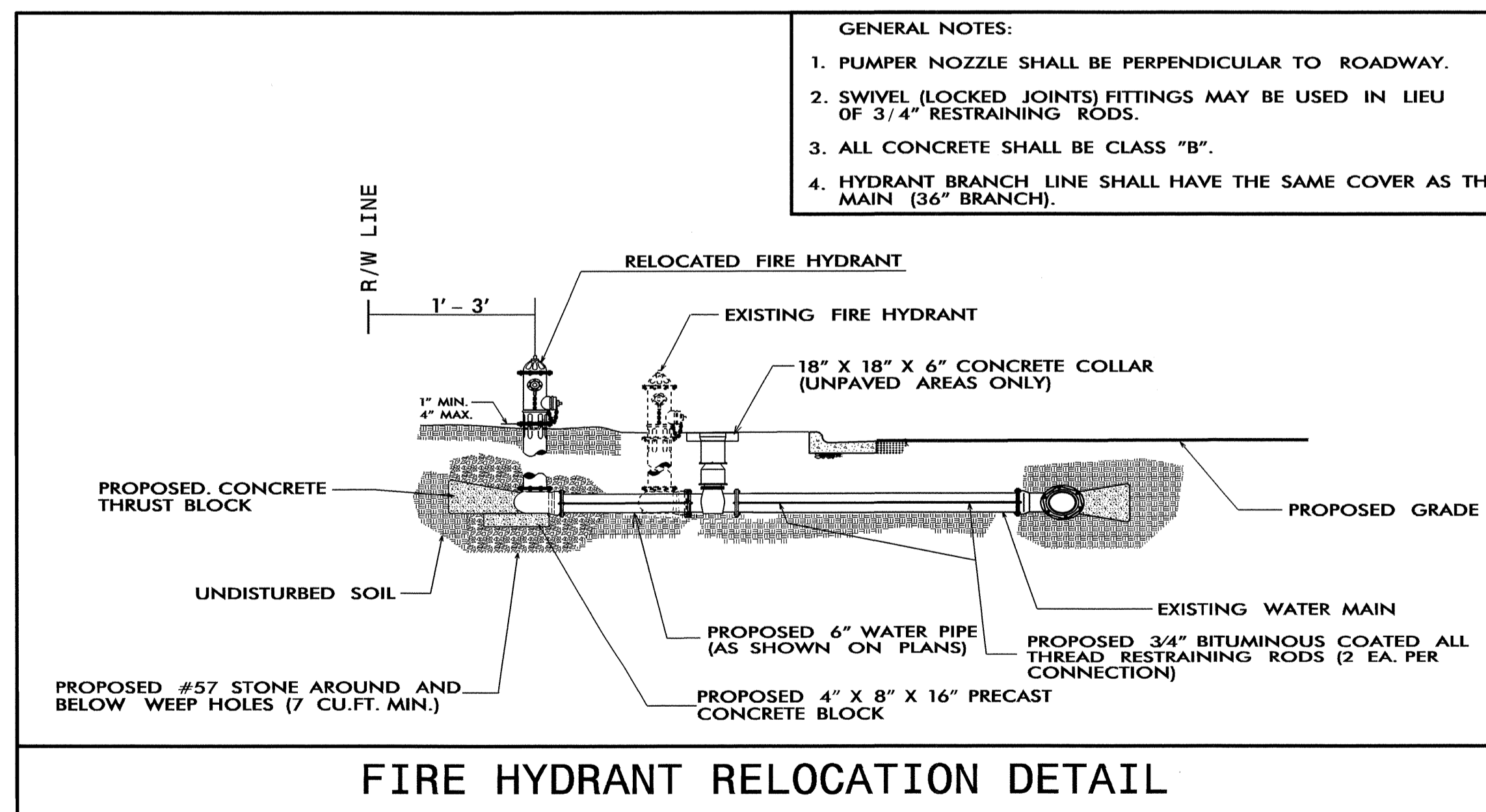
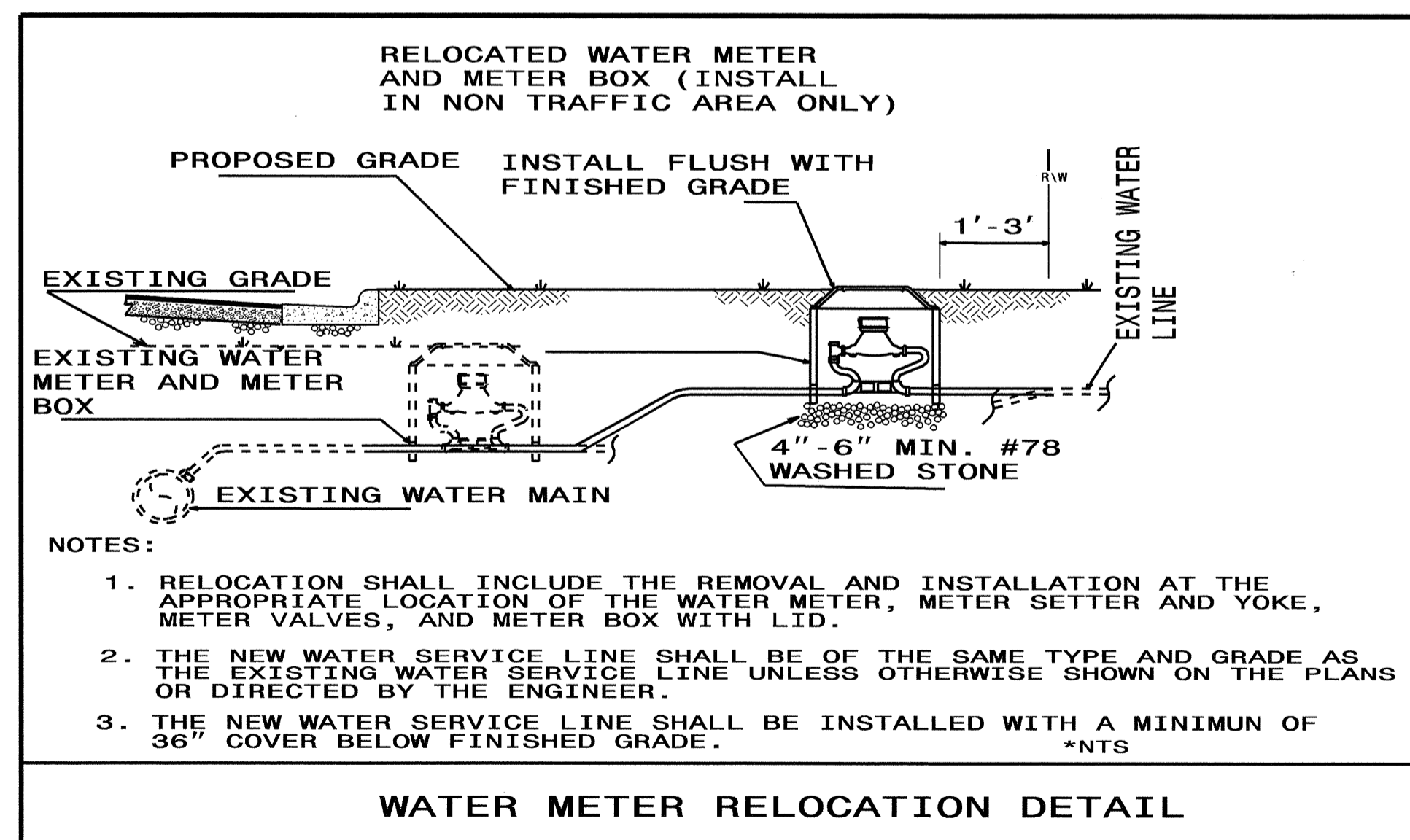
PROJECT TYPICAL DETAILS

PROJECT REFERENCE NO.	SHEET NO.
R-2612B	UC-3A
DESIGNED BY: JH	
DRAWN BY: JH	
CHECKED BY: JSM	
APPROVED BY: JSM	
REVISED:	
NORTH CAROLINA DEPARTMENT OF TRANSPORTATION	
UTILITIES ENGINEERING SEC. PHONE: (919) 707-6690 FAX: (919) 250-4151	
UTILITY CONSTRUCTION PLANS ONLY	

UTILITY CONSTRUCTION



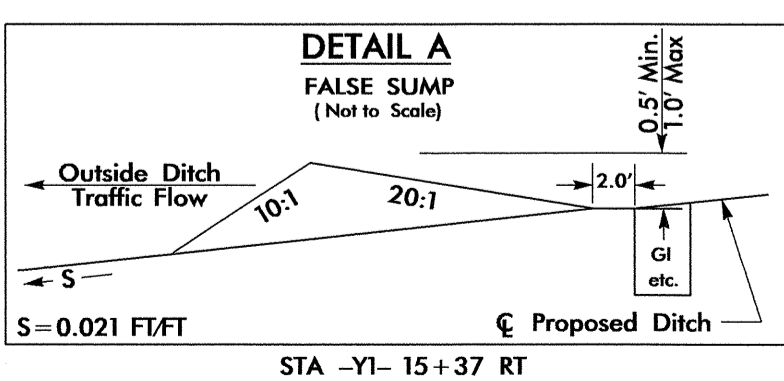
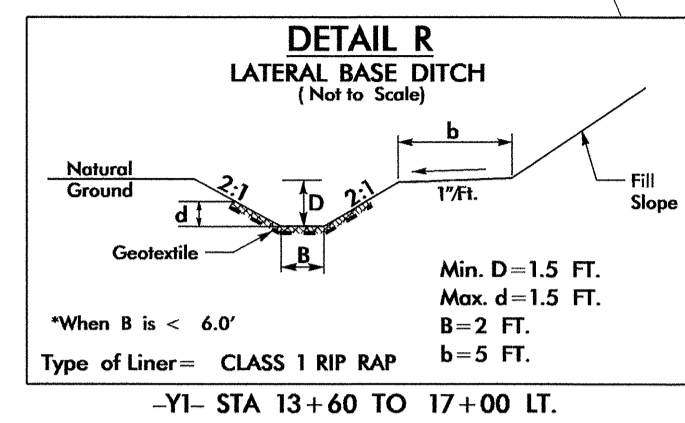
NOMINAL PIPE SIZE (INCHES)	TRENCH WIDTH (INCHES)	NOMINAL PIPE SIZE (INCHES)	TRENCH WIDTH (INCHES)
4	28	20	44
6	30	24	48
8	32	30	54
10	34	36	60
12	36	42	66
14	38	48	72
16	40	54	78
18	42		



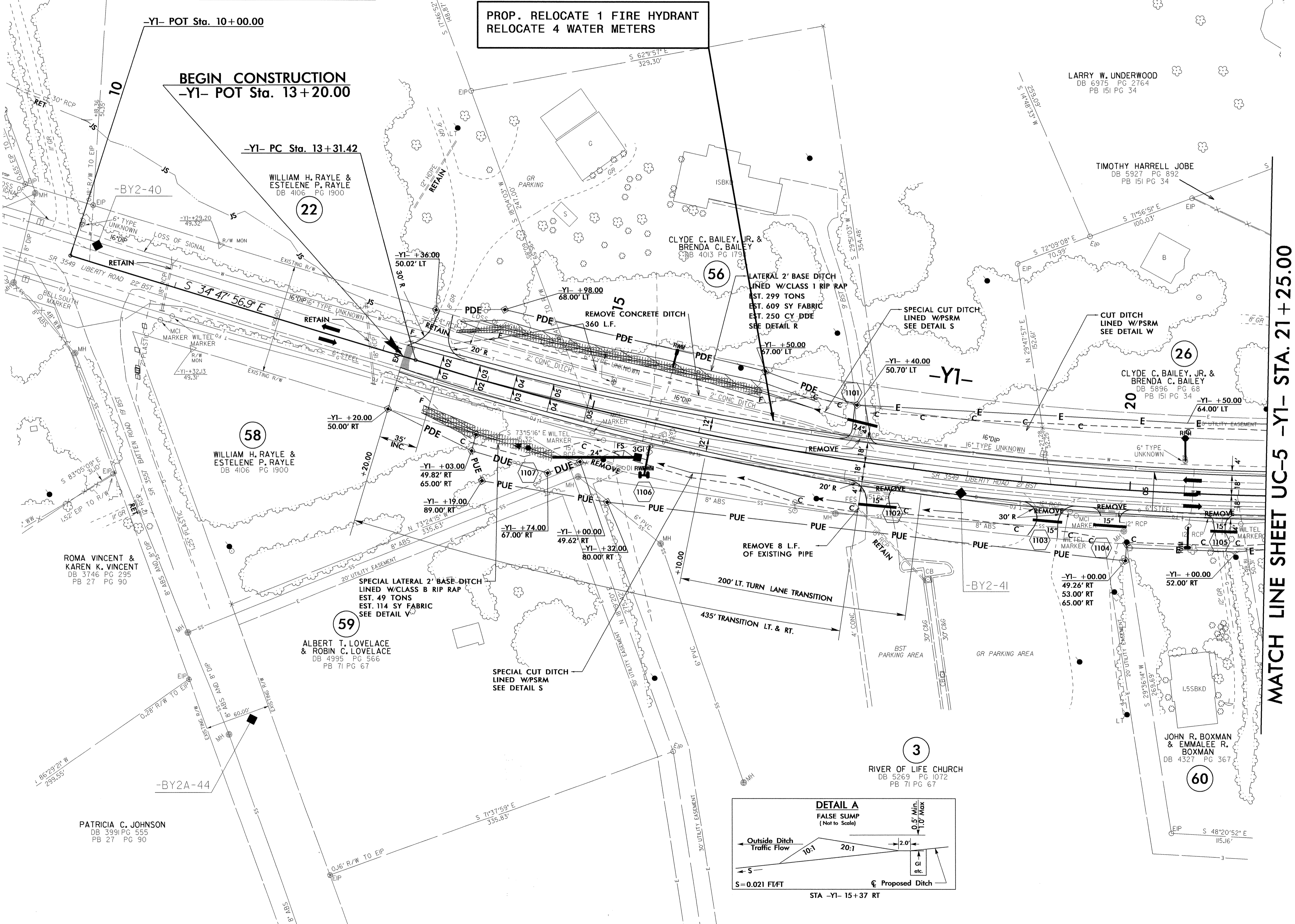
UTILITY CONSTRUCTION

-Y1-

PI Sta 19+11.02
 $\Delta = 22' 36" 17.3" (LT)$
 $D = 1' 58" 32.6"$
 $L = 1,441.3'$
 $T = 579.60'$
 $R = 2,900.00'$
 $RO = \text{SEE PLANS}$
 $SE = 0.05$
 $DS = 60 \text{ MPH}$



**PROP. RELOCATE 1 FIRE HYDRANT
 RELOCATE 4 WATER METERS**



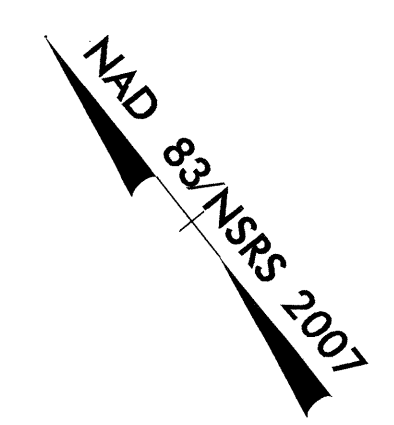
- NOTES**
- SEE SHEET 22 FOR -Y1- PROFILE
 - DRIVEWAY RADII ARE 10' UNLESS OTHERWISE NOTED

5/14/09
 26-FEB-2014 08:00
 J:\projects\2612B\2612B_Rdy_UC4_psk11.dgn

PROJECT REFERENCE NO.	SHEET NO.
R-2612B	UC-5
DESIGNED BY: JH	
DRAWN BY: JH	
CHECKED BY: JSM	
APPROVED BY: JSM	
REVISER:	
NORTH CAROLINA DEPARTMENT OF TRANSPORTATION	
UTILITIES ENGINEERING SEC. PHONE: (919) 707-6690 FAX: (919) 250-4151	
UTILITY CONSTRUCTION PLANS ONLY	

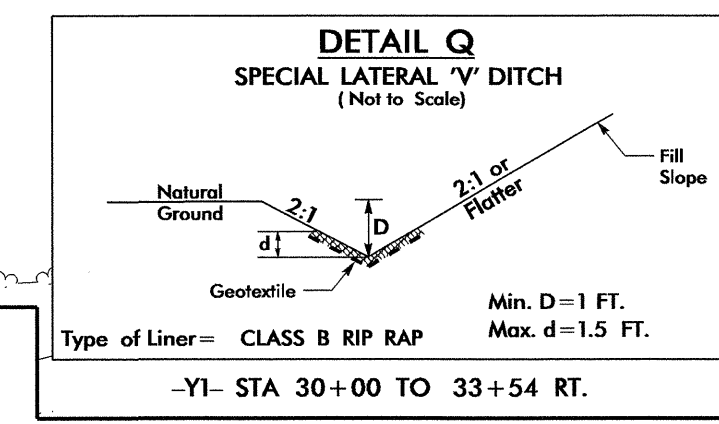
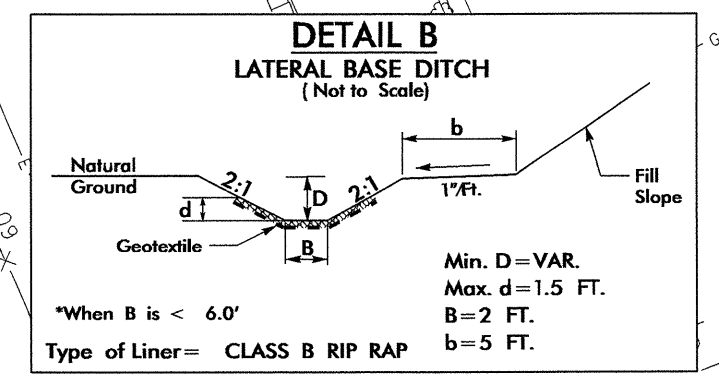
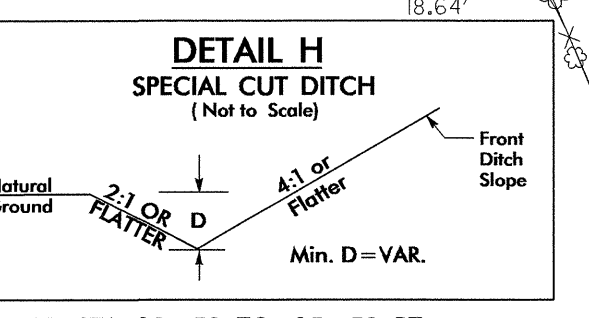
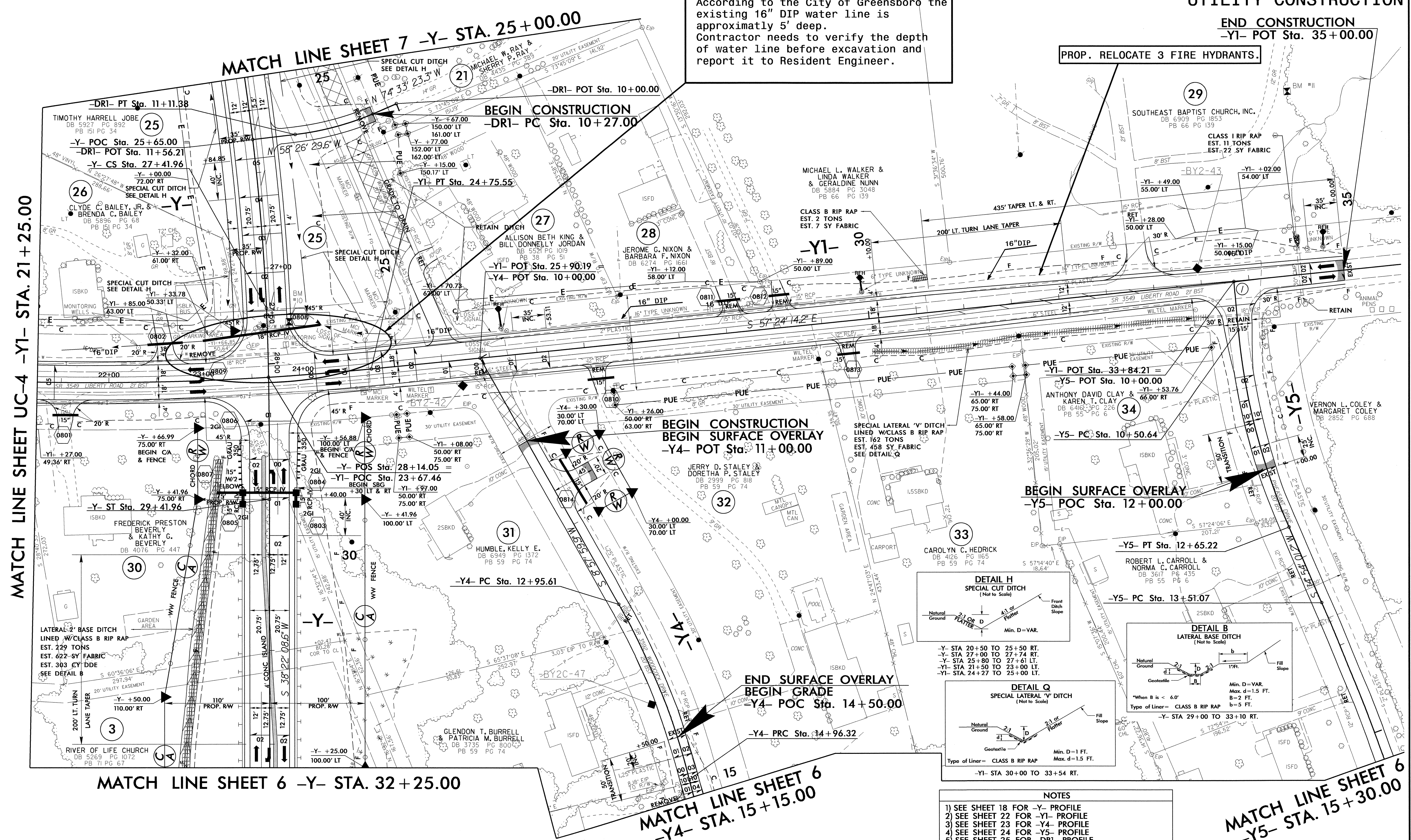
UTILITY CONSTRUCTION

END CONSTRUCTION
-Y1- POT Sta. 35+00.00



Note:
According to the City of Greensboro the existing 16" DIP water line is approximately 5' deep. Contractor needs to verify the depth of water line before excavation and report it to Resident Engineer.

PROP. RELOCATE 3 FIRE HYDRANTS.



- NOTES**
- 1) SEE SHEET 18 FOR -Y- PROFILE
 - 2) SEE SHEET 22 FOR -Y1- PROFILE
 - 3) SEE SHEET 23 FOR -Y4- PROFILE
 - 4) SEE SHEET 24 FOR -Y5- PROFILE
 - 5) SEE SHEET 25 FOR -DRI- PROFILE
 - 6) DRIVEWAY RADII ARE 10' UNLESS OTHERWISE NOTED

MATCH LINE SHEET 6
-Y5- STA. 15+30.00

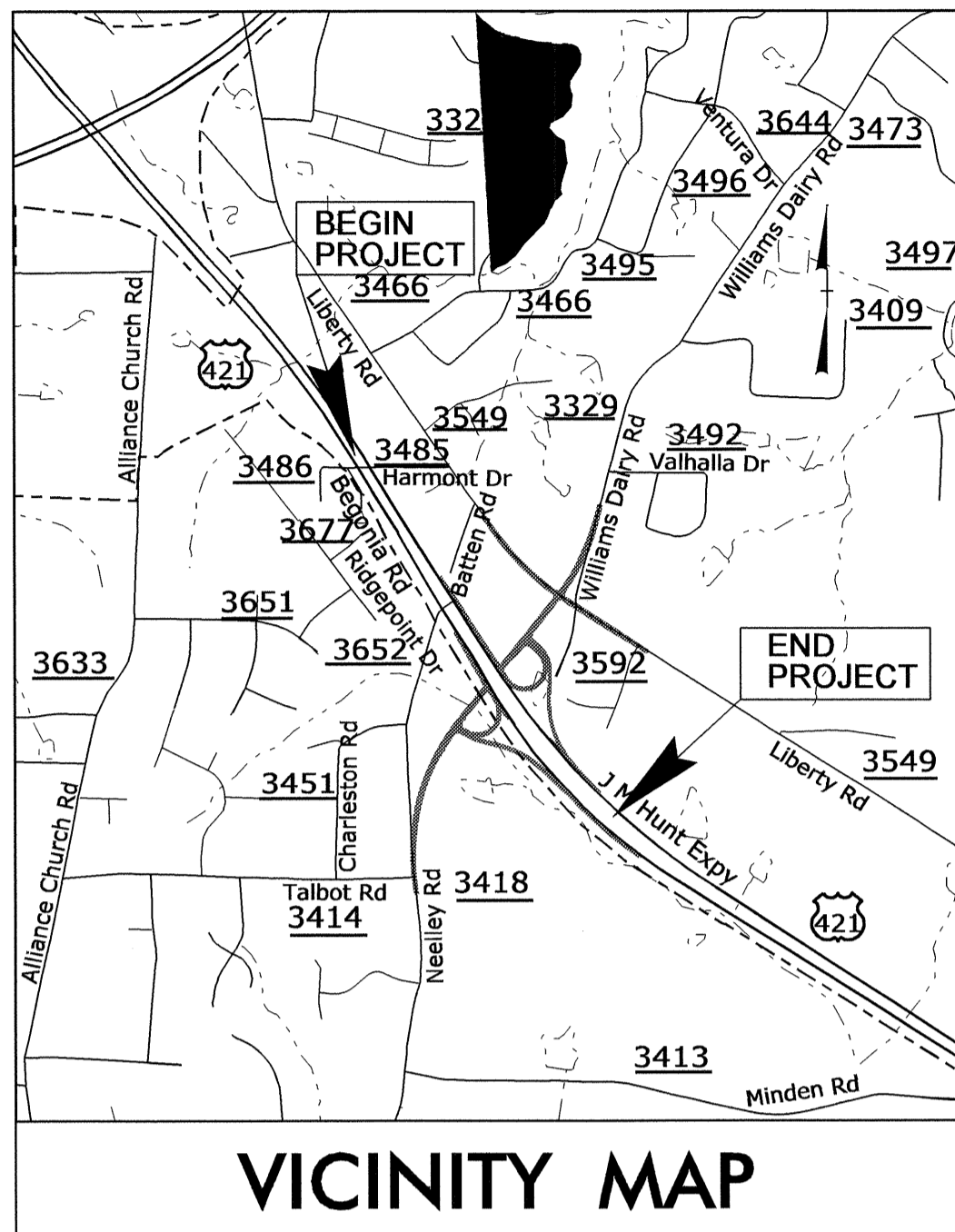
STATE OF NORTH CAROLINA
DIVISION OF HIGHWAYS

**UTILITIES BY OTHERS PLANS
GUILFORD COUNTY**

LOCATION: US 421 AT SR 3418 (NEELLET ROAD)
SOUTH OF GREENSBORO

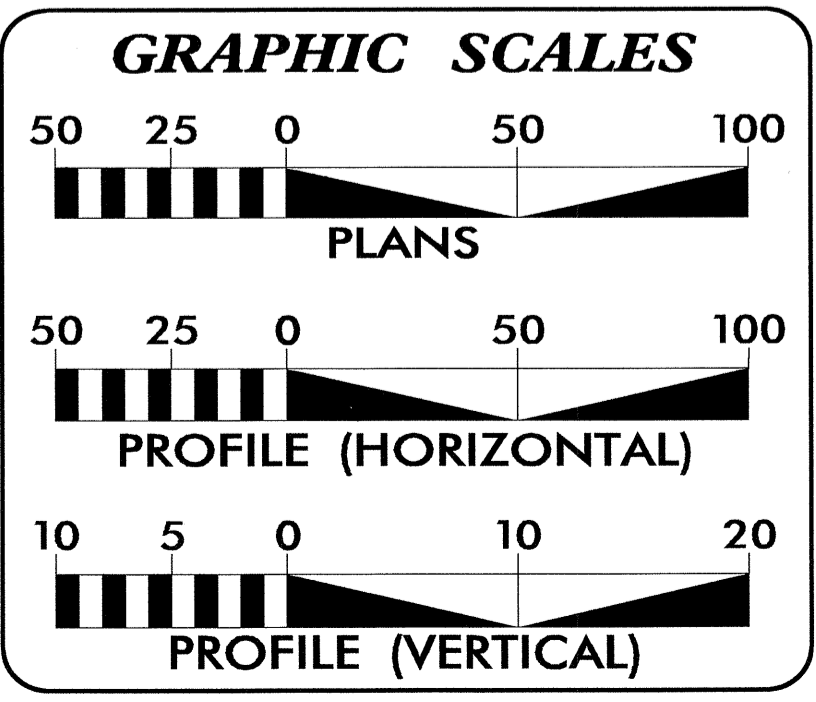
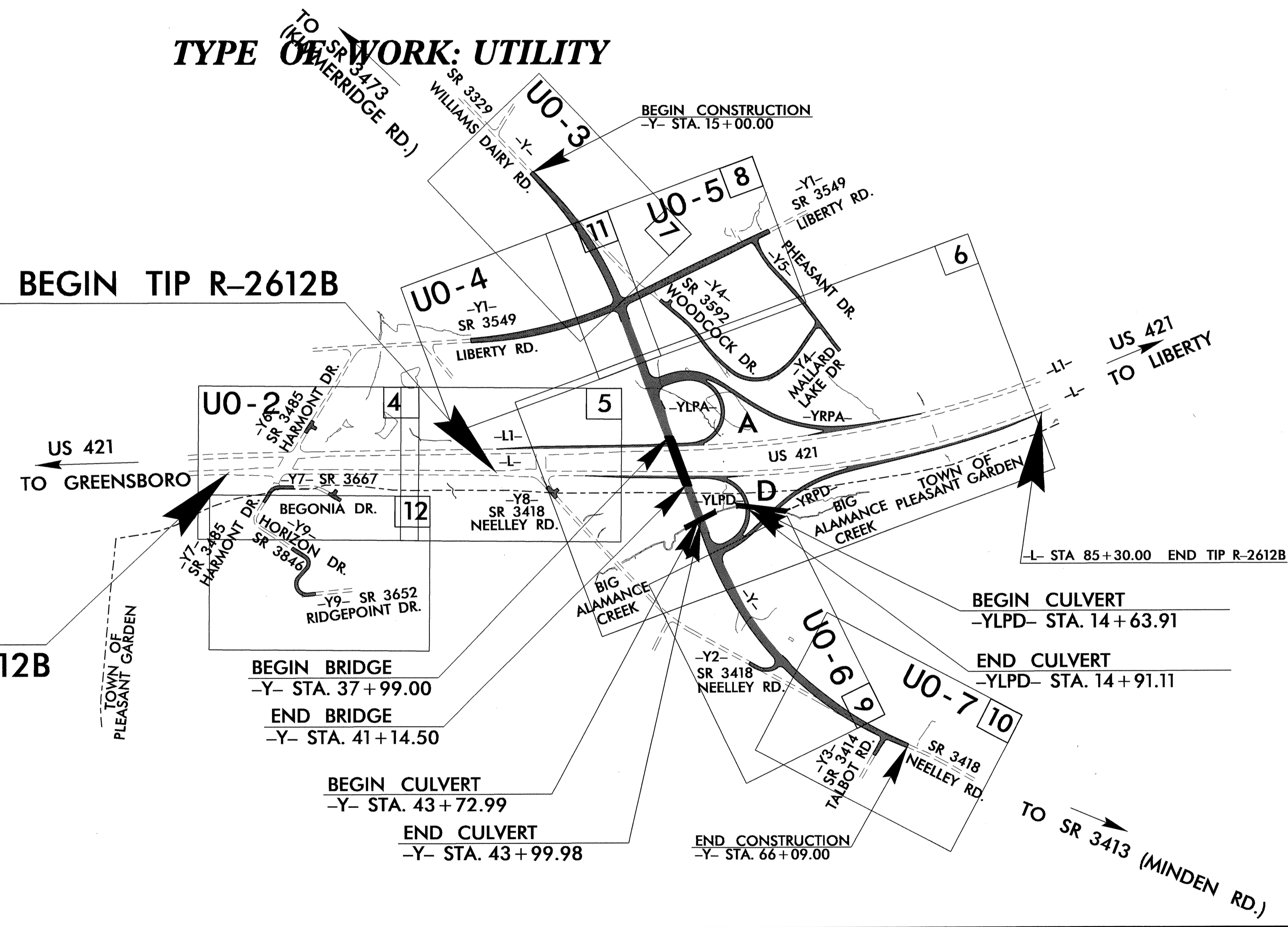
TYPE OF WORK: UTILITY

TIP PROJECT: R-2612B



-L- STA. 47+67.69 BEGIN TIP R-2612B


-L- STA. 29+25.00
BEGIN CONSTRUCTION R-2612B



INDEX OF SHEETS

SHEET NO.	DESCRIPTION
UO-1	TITLE SHEET
UO-2 THRU UO-7	UTILITY BY OTHERS PLAN SHEETS

- UTILITY OWNERS ON PROJECT**
- (A) DUKE ENERGY DISTRIBUTION POWER
 - (B) AT&T TELEPHONE
 - (C) VERIZON (formerly MCI) TELEPHONE
 - (D) LEVEL 3 (formerly WILTEL) TELEPHONE
 - (E) PIEDMONT NATURAL GAS GAS
 - (F) TIME WARNER TV CABLE



PREPARED IN THE OFFICE OF:
**DIVISION OF HIGHWAYS
UTILITIES UNIT
UTILITIES ENGINEERING**

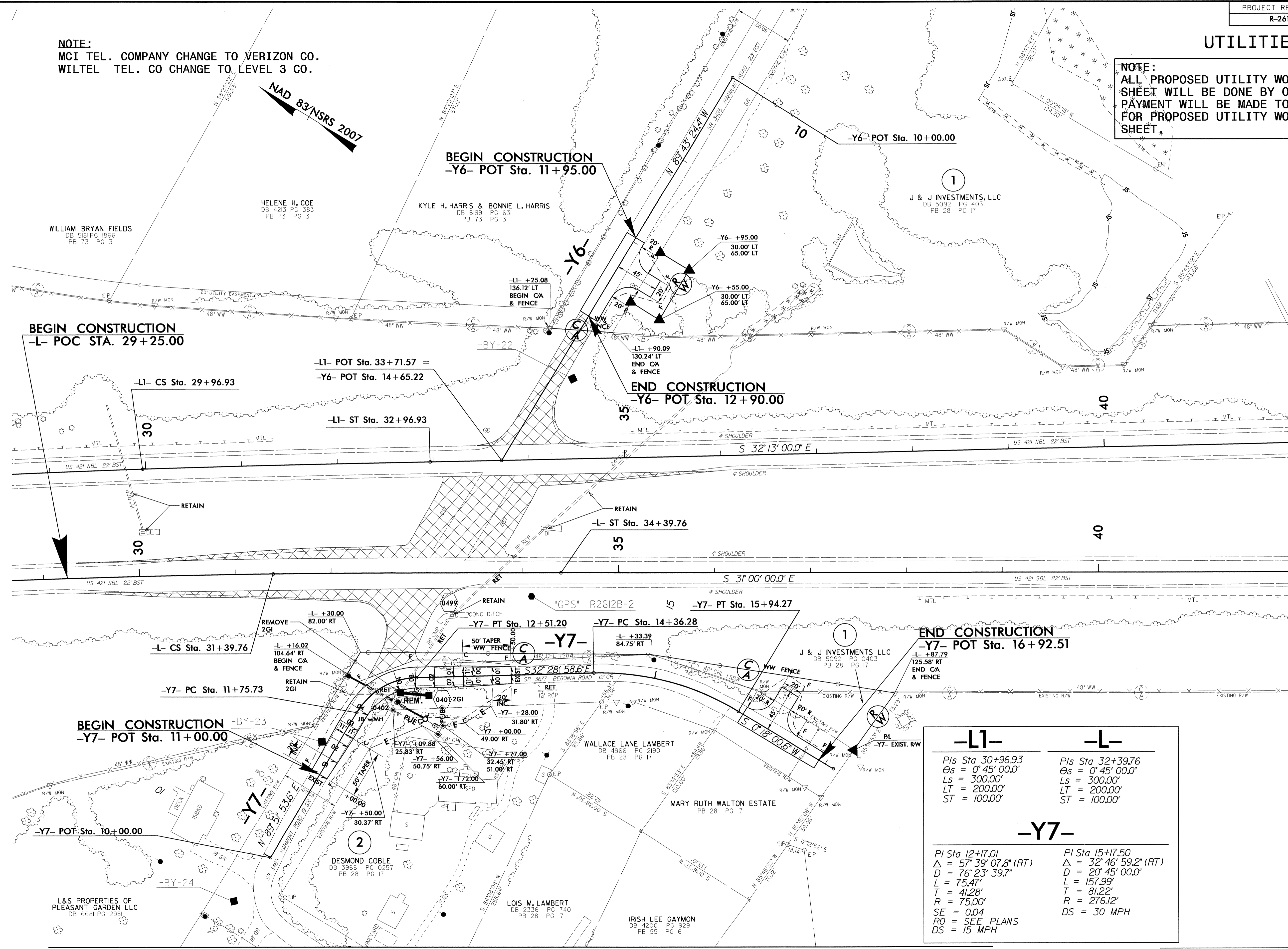
1555 MAIL SERVICES CENTER
RALEIGH NC 27699-1555
PHONE (919) 707-6690
FAX (919) 250-4151

Roger Worthington, P.E. UTILITIES SECTION ENGINEER
Steve McKee, P.E. UTILITIES SQUAD LEADER PROJECT ENGINEER
Jamshid Hafshejani UTILITIES PROJECT DESIGNER

UTILITIES BY OTHERS

NOTE:
ALL PROPOSED UTILITY WORK SHOWN ON THIS SHEET WILL BE DONE BY OTHERS. NO PAYMENT WILL BE MADE TO THE CONTRACTOR FOR PROPOSED UTILITY WORK SHOWN ON THIS SHEET.

NOTE:
MCI TEL. COMPANY CHANGE TO VERIZON CO.
WILTEL TEL. CO CHANGE TO LEVEL 3 CO.



MATCH LINE SHEET 5 -L- STA. 42+00.00

-L1-	-L-
PIs Sta 30+96.93	PIs Sta 32+39.76
Os = 0° 45' 00.0"	Os = 0° 45' 00.0"
Ls = 300.00'	Ls = 300.00'
LT = 200.00'	LT = 200.00'
ST = 100.00'	ST = 100.00'
-Y7-	
PI Sta 12+17.01	PI Sta 15+17.50
Δ = 57° 39' 07.8" (RT)	Δ = 32° 46' 59.2" (RT)
D = 76° 23' 39.7"	D = 20° 45' 00.0"
L = 75.47'	L = 157.99'
T = 41.28'	T = 81.22'
R = 75.00'	R = 27612'
SE = 0.04	DS = 30 MPH
RO = SEE PLANS	
DS = 15 MPH	

MATCH LINE SHEET 12

NOTES

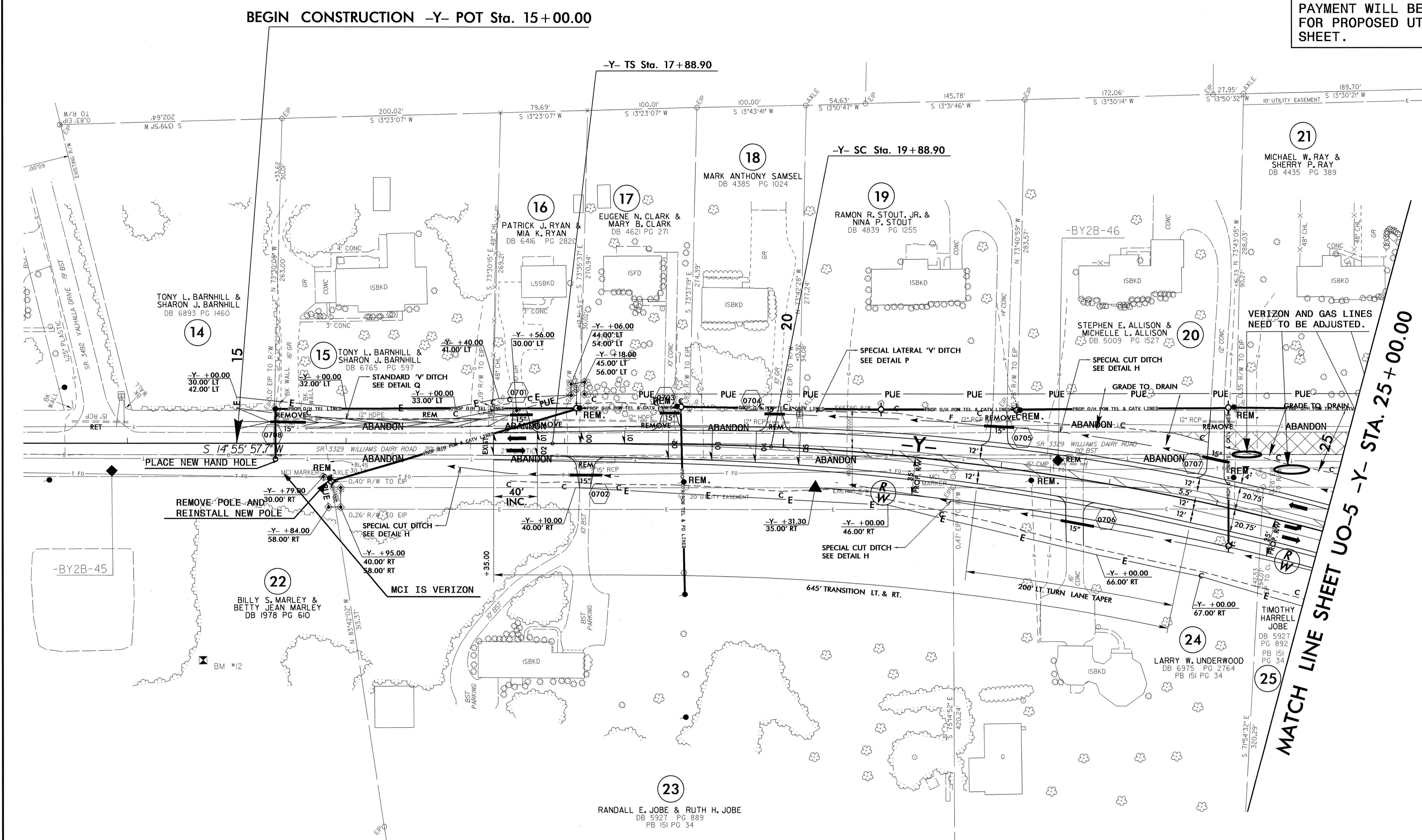
- 1) SEE SHEET 13 FOR -L- PROFILE
- 2) SEE SHEET 15 FOR -L1- PROFILE
- 3) SEE SHEET 24 FOR -Y6- PROFILE
- 4) SEE SHEET 25 FOR -Y7- PROFILE

8/17/99 5/14/99
26-FEB-2014 14:46
C:\Users\jg\OneDrive\Documents\Projects\NR2612B_U02_Rdu_psh04.dgn

UTILITIES BY OTHERS

NOTE:
 ALL PROPOSED UTILITY WORK SHOWN ON THIS SHEET WILL BE DONE BY OTHERS. NO PAYMENT WILL BE MADE TO THE CONTRACTOR FOR PROPOSED UTILITY WORK SHOWN ON THIS SHEET.

NAD 83/NSRS 2007



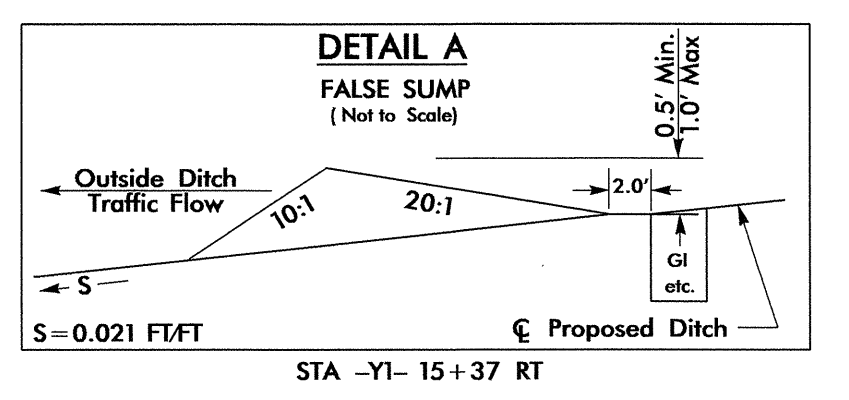
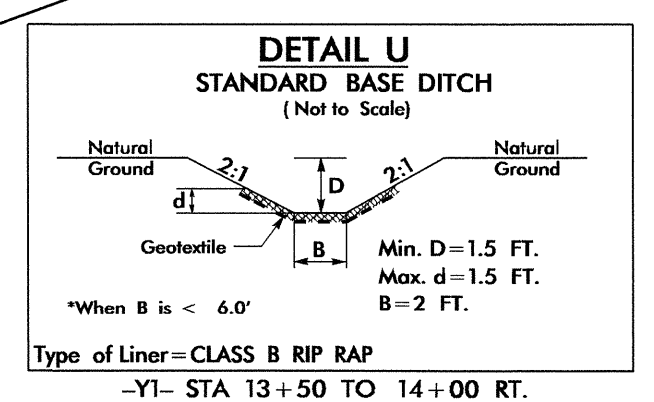
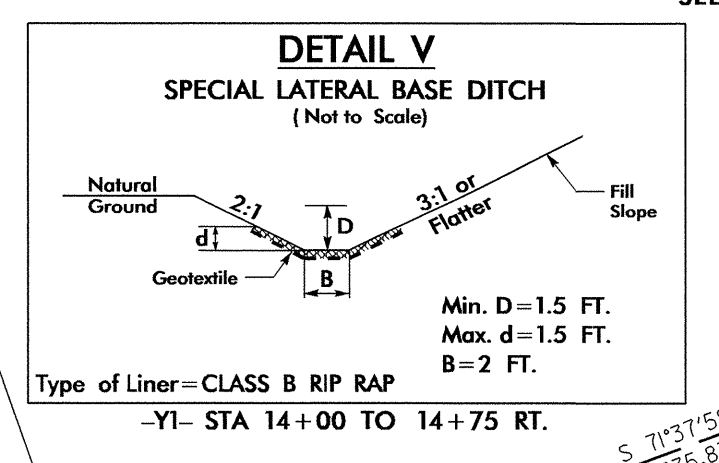
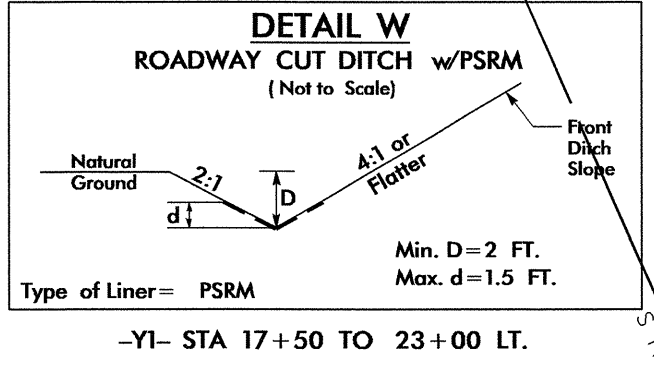
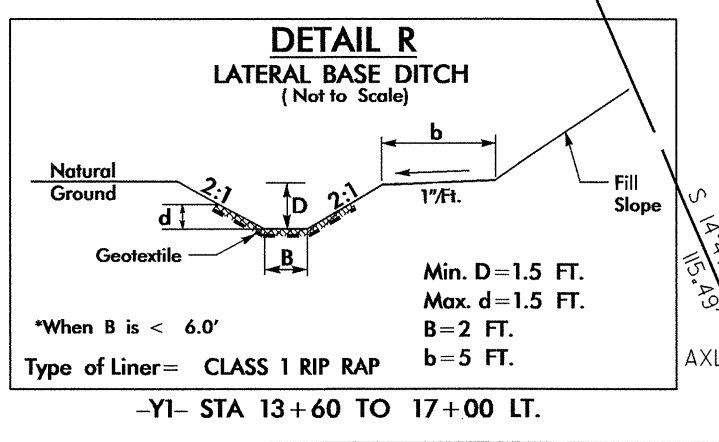
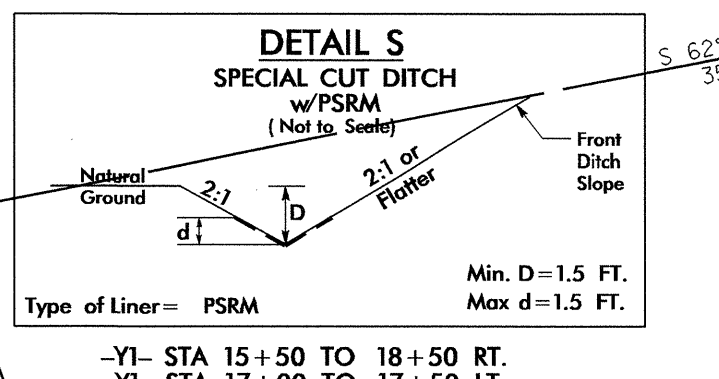
- NOTES**
- 1) SEE SHEET 18 FOR -Y- PROFILE
 - 2) DRIVEWAY RADII ARE 10' UNLESS OTHERWISE NOTED

5/14/99
 27-FEB-2014 13:18
 C:\Users\jfernan\Desktop\Projects\2612B-U03-Rd4-psd\2612B-U03-Rd4-psd.dgn
 jfernan

UTILITIES BY OTHERS

NOTE:
ALL PROPOSED UTILITY WORK SHOWN ON THIS SHEET WILL BE DONE BY OTHERS. NO PAYMENT WILL BE MADE TO THE CONTRACTOR FOR PROPOSED UTILITY WORK SHOWN ON THIS SHEET.

-Y1-
 PI Sta 19+11.02
 $\Delta = 22' 36" 17.3" (LT)$
 $D = 1' 58" 32.6"$
 $L = 1,144.13'$
 $T = 579.60'$
 $R = 2,900.00'$
 $RO = \text{SEE PLANS}$
 $SE = 0.05$
 $DS = 60 \text{ MPH}$

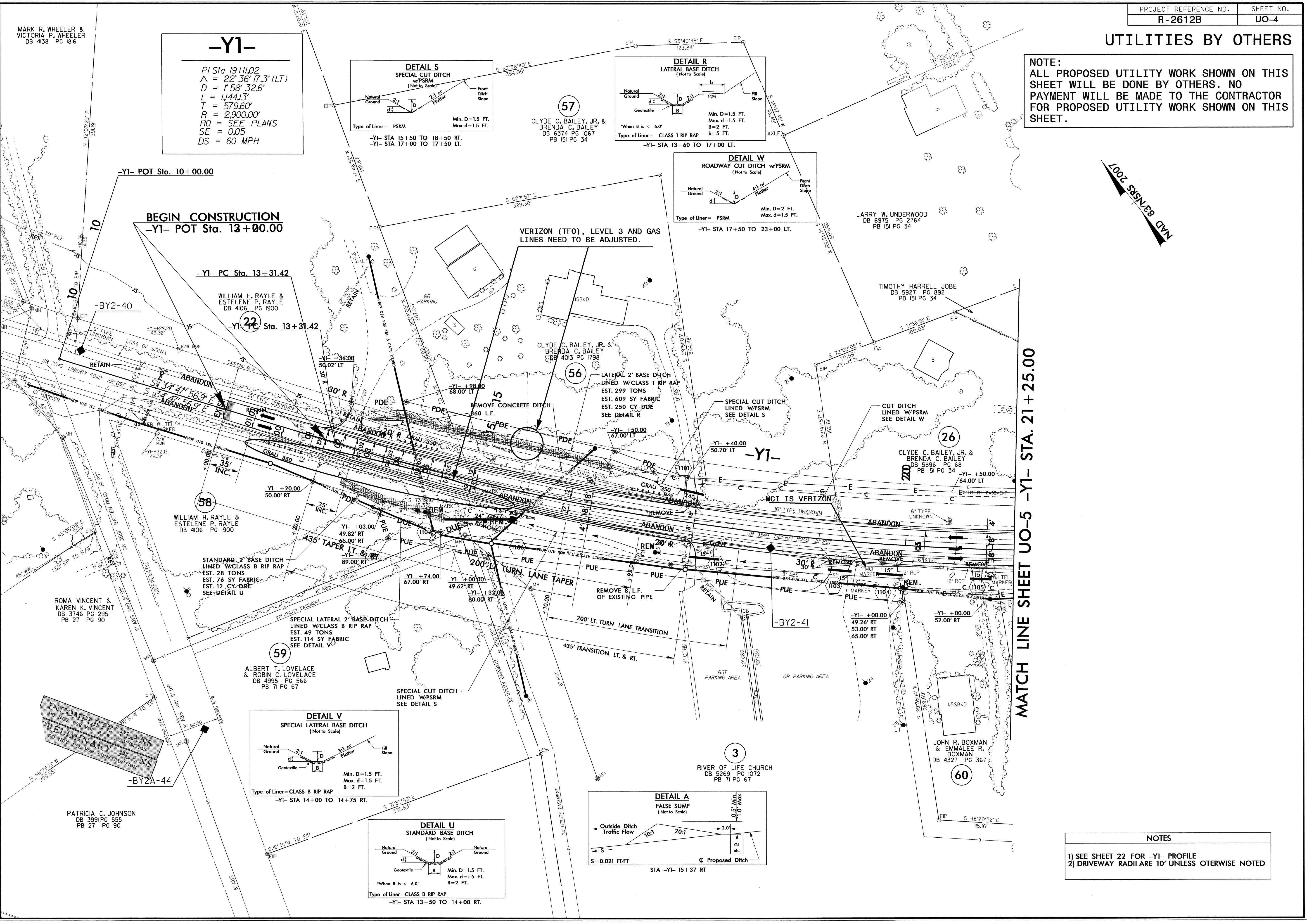


INCOMPLETE PLANS
DO NOT USE FOR R/W ACQUISITION
PRELIMINARY PLANS
DO NOT USE FOR CONSTRUCTION

MATCH LINE SHEET UO-5 -Y1- STA. 21+25.00

NOV 28 2007

NOTES
 1) SEE SHEET 22 FOR -Y1- PROFILE
 2) DRIVEWAY RADII ARE 10' UNLESS OTHERWISE NOTED

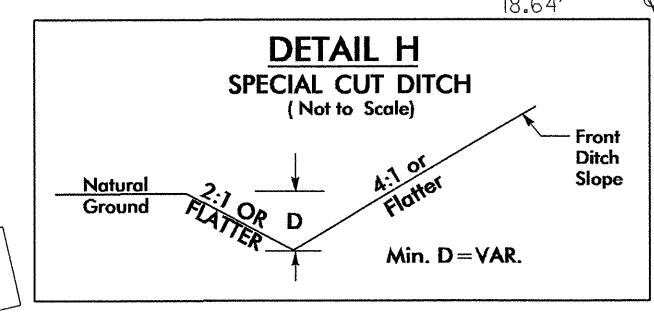
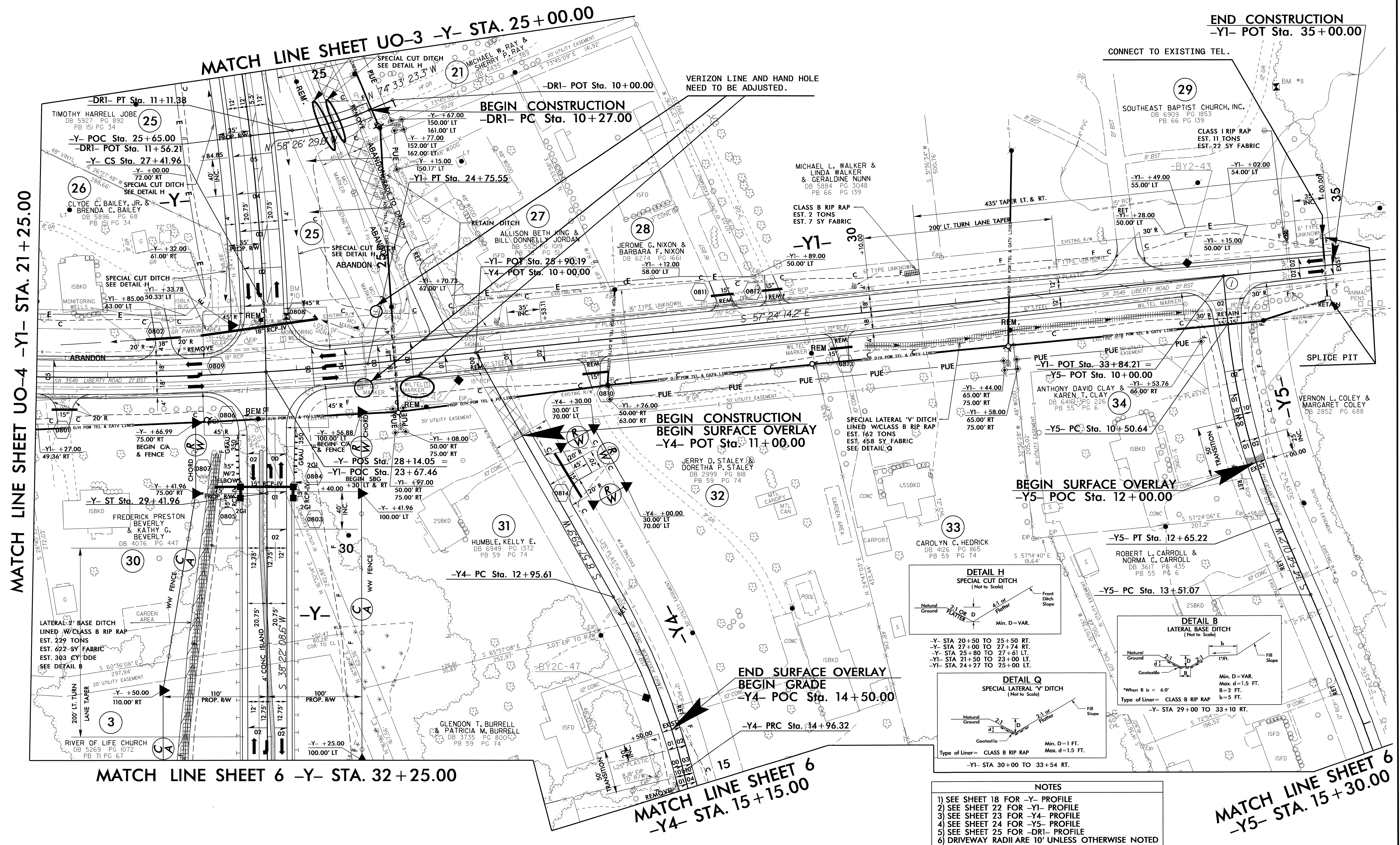


REVISIONS

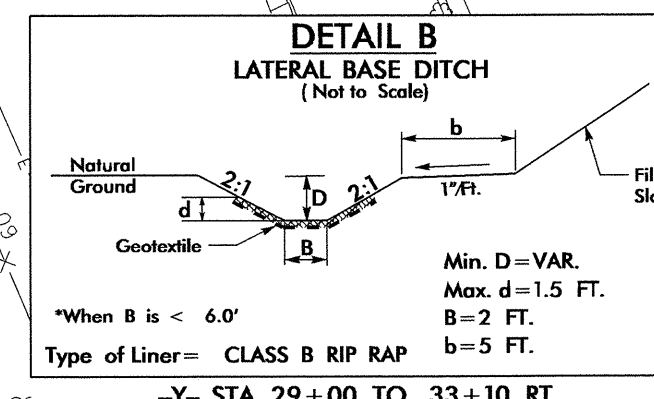
8/11/99
 MARK R. WHEELER & VICTORIA P. WHEELER DB 4138 PG 1816
 27-FEB-2014 09:35
 C:\Users\psh11\dgn\Projects\2612B_UO-4_Rofj_psh11.dgn

UTILITIES BY OTHERS

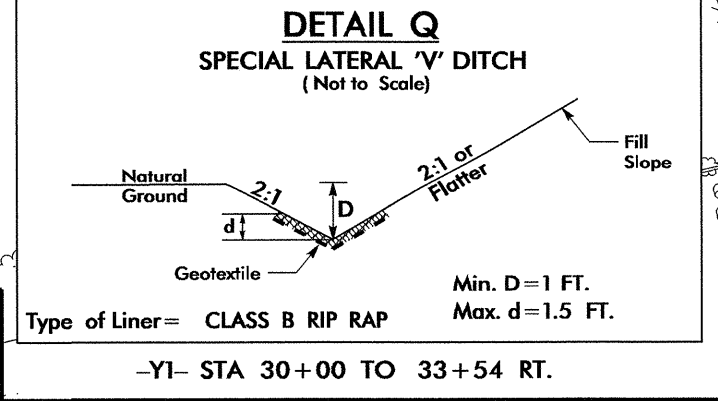
NOTE:
ALL PROPOSED UTILITY WORK SHOWN ON THIS SHEET WILL BE DONE BY OTHERS. NO PAYMENT WILL BE MADE TO THE CONTRACTOR FOR PROPOSED UTILITY WORK SHOWN ON THIS SHEET.



-Y- STA 20+50 TO 25+50 RT.
-Y- STA 27+00 TO 27+74 RT.
-Y- STA 25+80 TO 27+61 LT.
-Y1- STA 21+50 TO 23+00 LT.
-Y1- STA. 24+27 TO 25+00 LT.



*When B is < 6.0'
Type of Liner= CLASS B RIP RAP
-Y- STA 29+00 TO 33+10 RT.



-Y1- STA 30+00 TO 33+54 RT.

NOTES

- 1) SEE SHEET 18 FOR -Y- PROFILE
- 2) SEE SHEET 22 FOR -Y1- PROFILE
- 3) SEE SHEET 23 FOR -Y4- PROFILE
- 4) SEE SHEET 24 FOR -Y5- PROFILE
- 5) SEE SHEET 25 FOR -DRI- PROFILE
- 6) DRIVEWAY RADII ARE 10' UNLESS OTHERWISE NOTED

MATCH LINE SHEET UO-4 -Y1- STA. 21+25.00

MATCH LINE SHEET 6 -Y- STA. 32+25.00

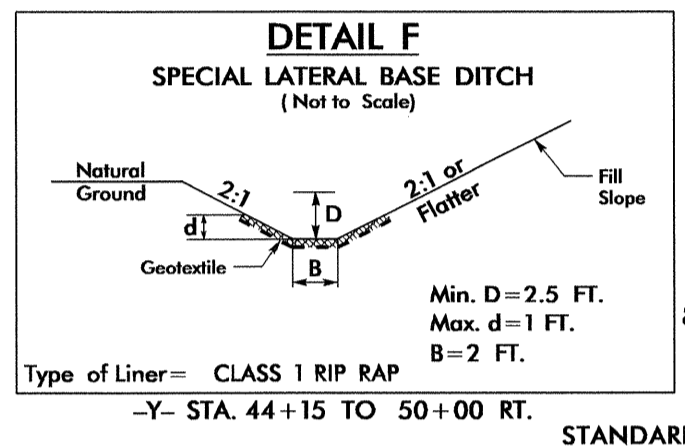
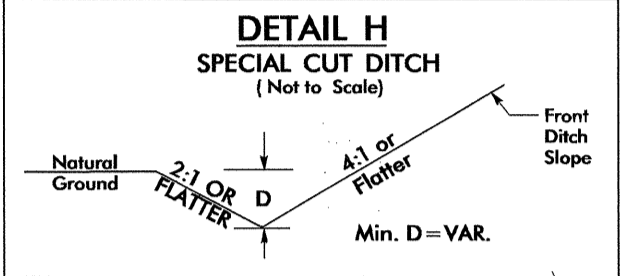
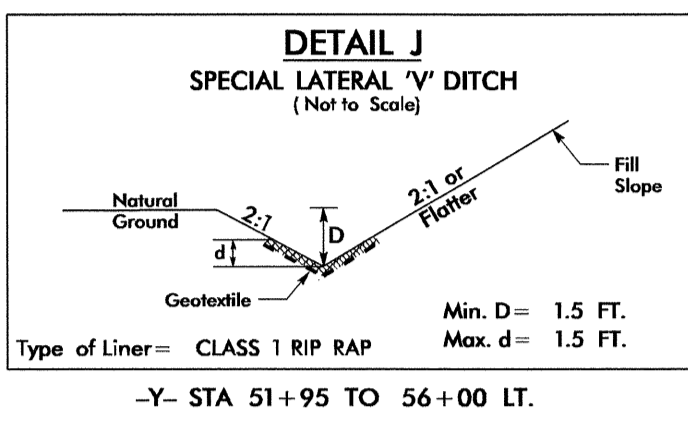
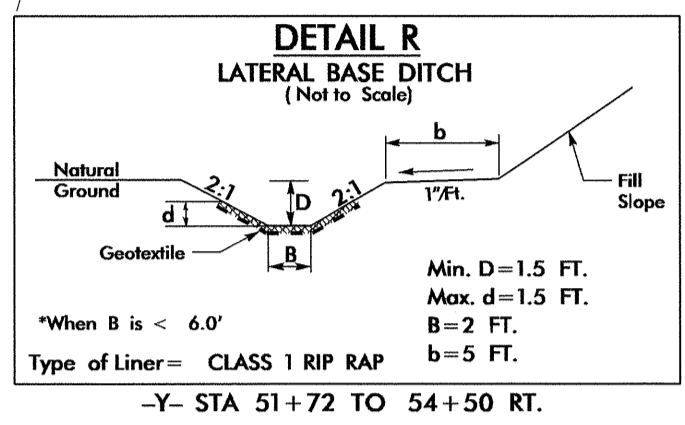
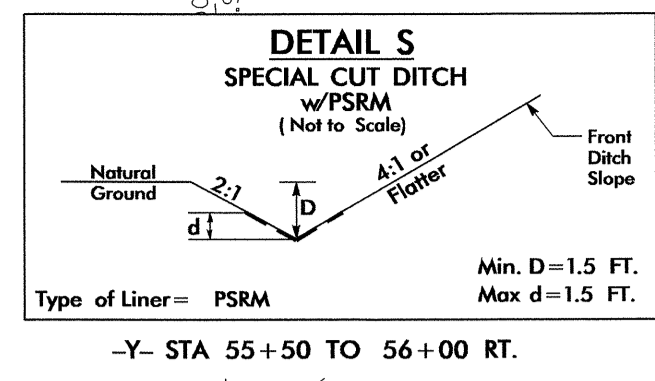
MATCH LINE SHEET 6
-Y4- STA. 15+15.00

MATCH LINE SHEET 6
-Y5- STA. 15+30.00

26-FEB-2014 14:48 \\eng\user\jacob\proj\VR2612B_UO-5_Rd+Psh08.dgn

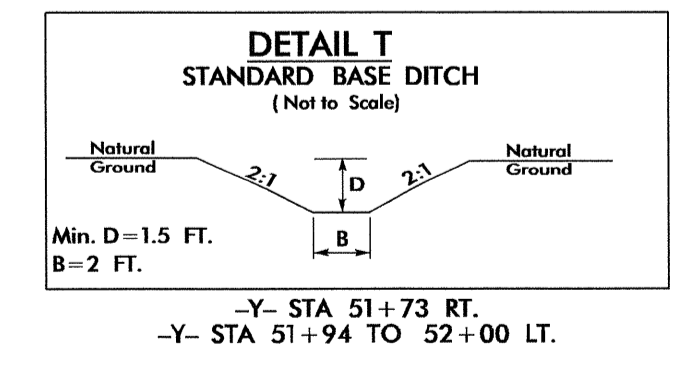
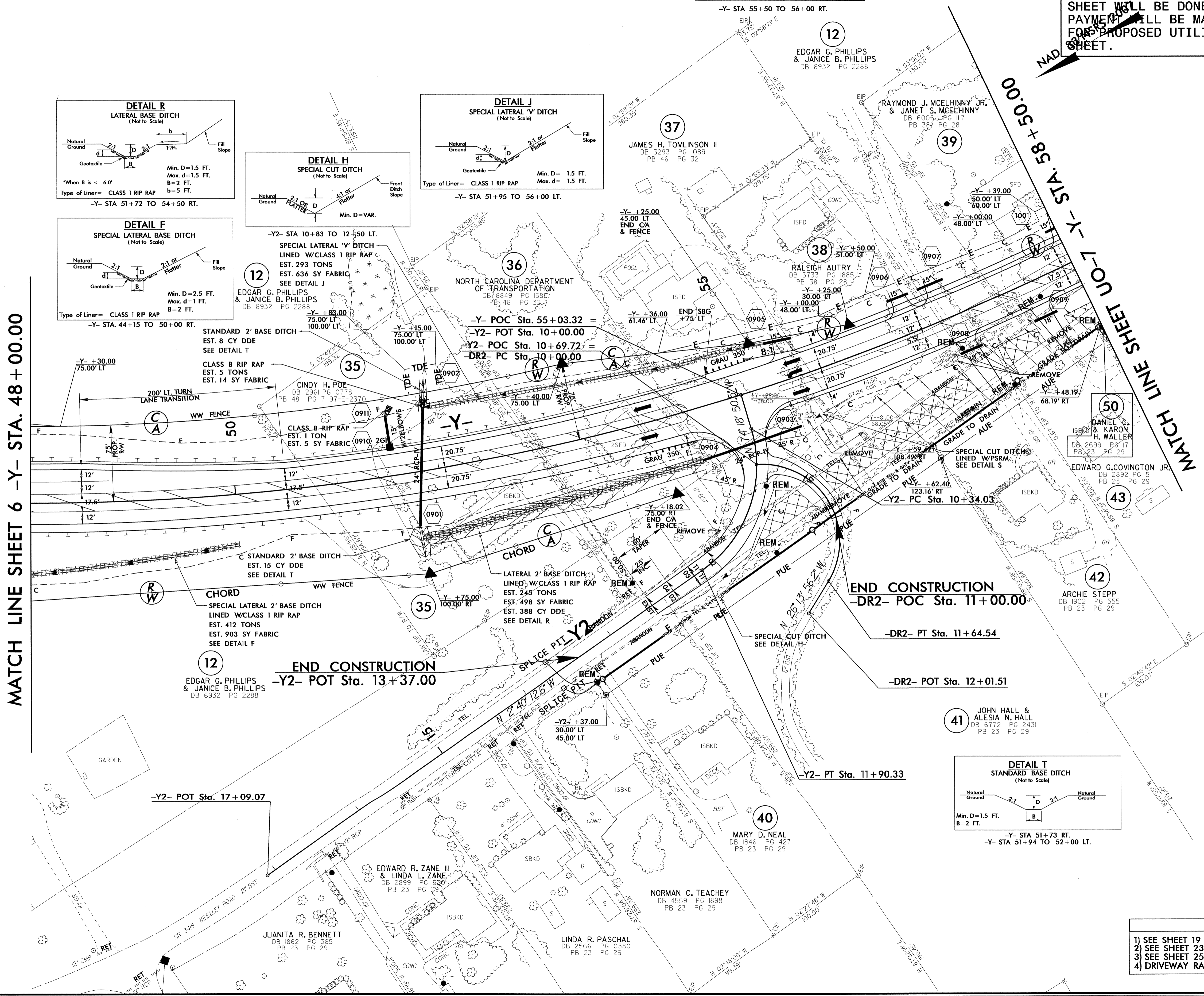
UTILITIES BY OTHERS

NOTE:
ALL PROPOSED UTILITY WORK SHOWN ON THIS SHEET WILL BE DONE BY OTHERS. NO PAYMENT WILL BE MADE TO THE CONTRACTOR FOR PROPOSED UTILITY WORK SHOWN ON THIS SHEET.



MATCH LINE SHEET 6 -Y- STA. 48+00.00

MATCH LINE SHEET UO-7 -Y- STA. 35+85 TO 35+00.00



- NOTES
- 1) SEE SHEET 19 FOR -Y- PROFILE
 - 2) SEE SHEET 23 FOR -Y2- PROFILE
 - 3) SEE SHEET 25 FOR -DR2- PROFILE
 - 4) DRIVEWAY RADII ARE 10' UNLESS OTHERWISE NOTED

27-FEB-2014 13:17:11 L:\Users\Engineering\UO-6\Proj\AR2612B_UO-6_Rdy_psh09.dgn
 8/17/99

UTILITIES BY OTHERS

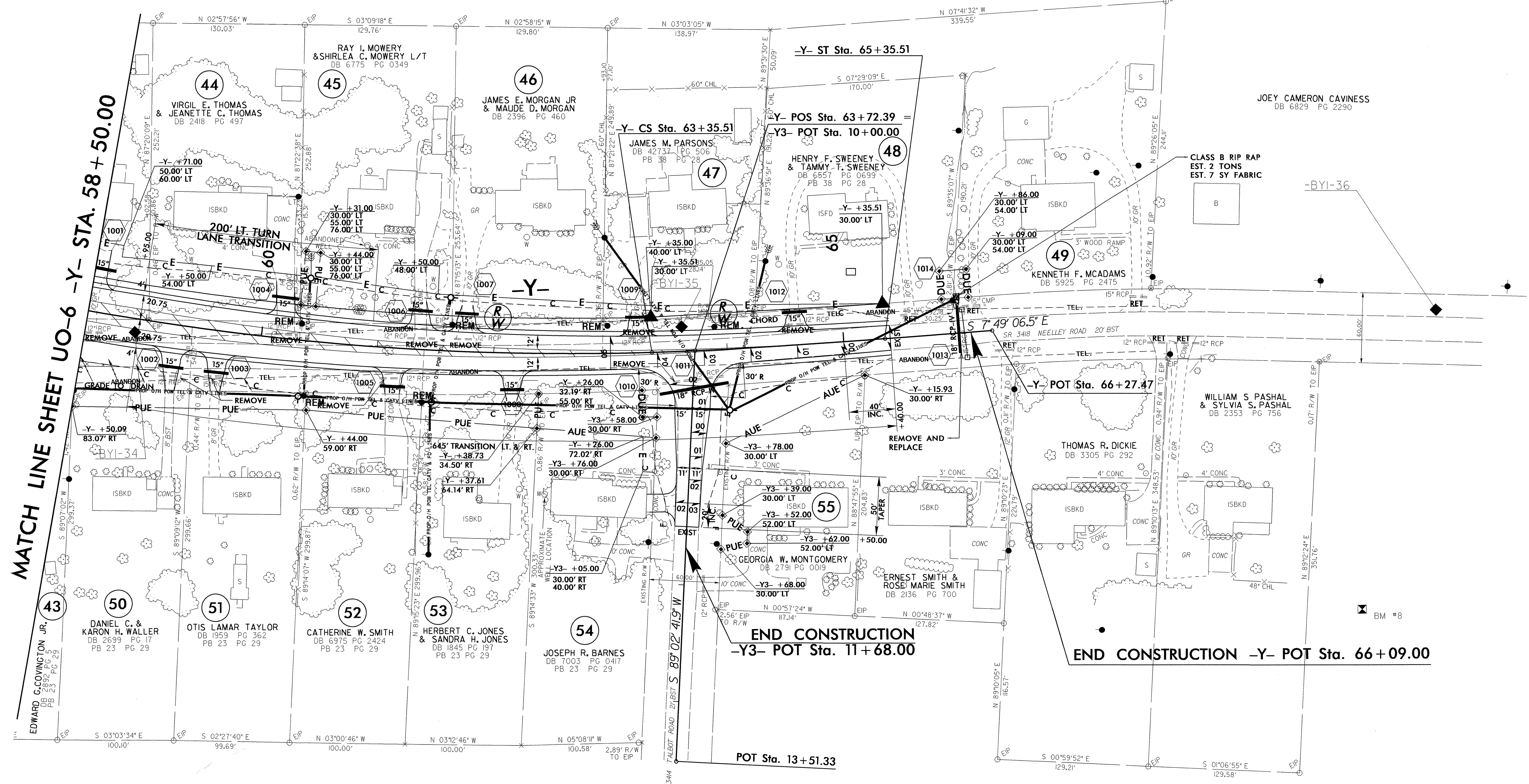
NOTE:
ALL PROPOSED UTILITY WORK SHOWN ON THIS SHEET WILL BE DONE BY OTHERS. NO PAYMENT WILL BE MADE TO THE CONTRACTOR FOR PROPOSED UTILITY WORK SHOWN ON THIS SHEET.

-Y-

PI Sta 55+34.65	PIs Sta 64+02.19
$\Delta = 41' 16" 10.0'$ (LT)	$\Theta_s = 2' 27" 32.6'$
$D = 2' 27" 32.6'$	$L_s = 200.00'$
$L = 1,678.27'$	$LT = 133.35'$
$T = 877.40'$	$ST = 66.68'$
$R = 2,330.00'$	
$SE = 0.05$	
$RO = \text{SEE PLANS}$	
$DS = 60 \text{ MPH}$	

EDGAR G. PHILLIPS
& JANICE B. PHILLIPS
DB 6932 PG 2288

NAD 83/NSRS 2007



MATCH LINE SHEET UO-6 -Y- STA. 58+50.00

-BYIB-38

NOTES
1) SEE SHEET 19 FOR -Y- PROFILE
2) SEE SHEET 23 FOR -Y3- PROFILE
3) DRIVEWAY RADII ARE 10' UNLESS OTHERWISE NOTED

27-FEB-2014 13:45 I:\times\Engineering\UO-7\Proj\R2612B-UO-7-Rdy.psh10.dgn