

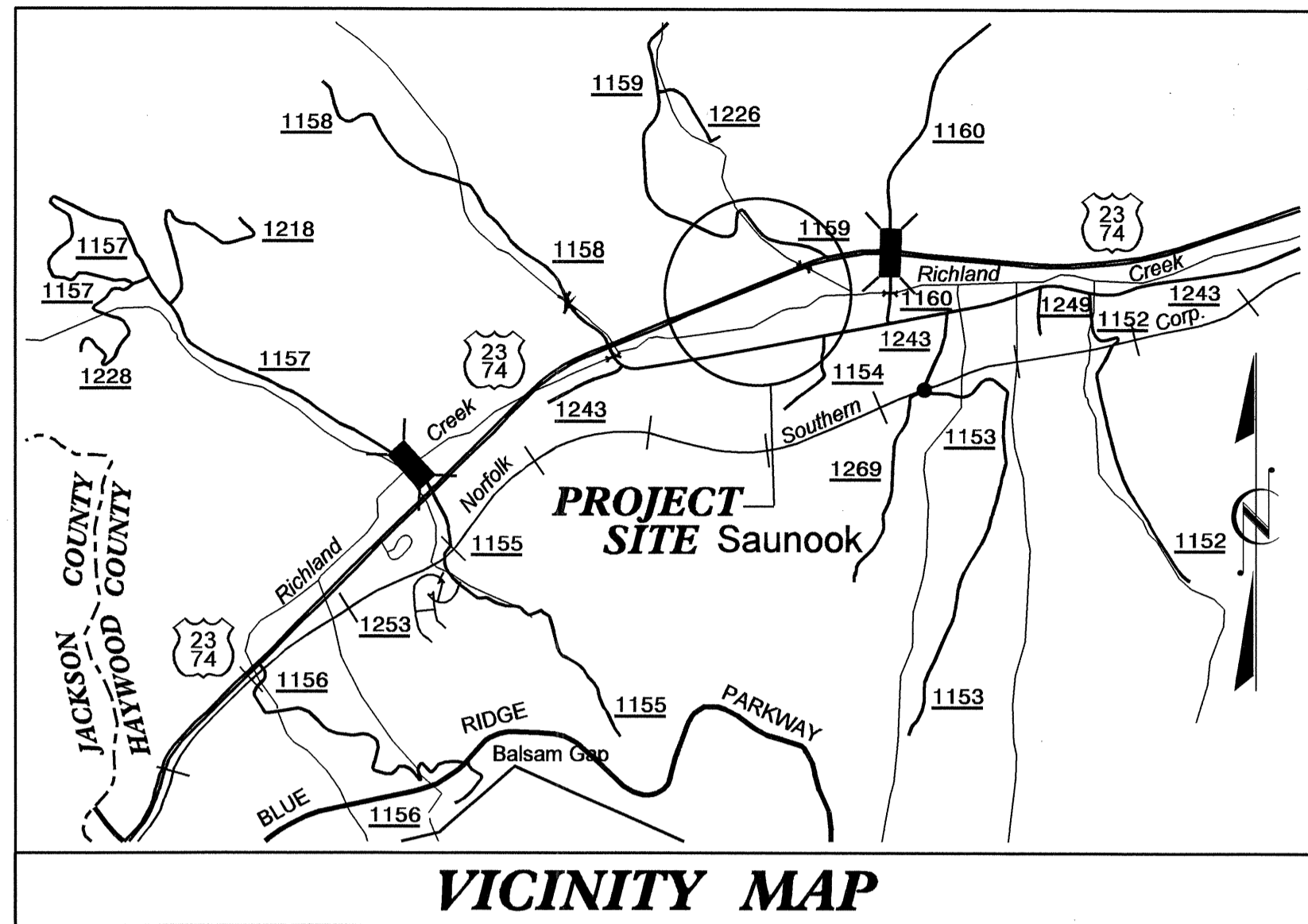
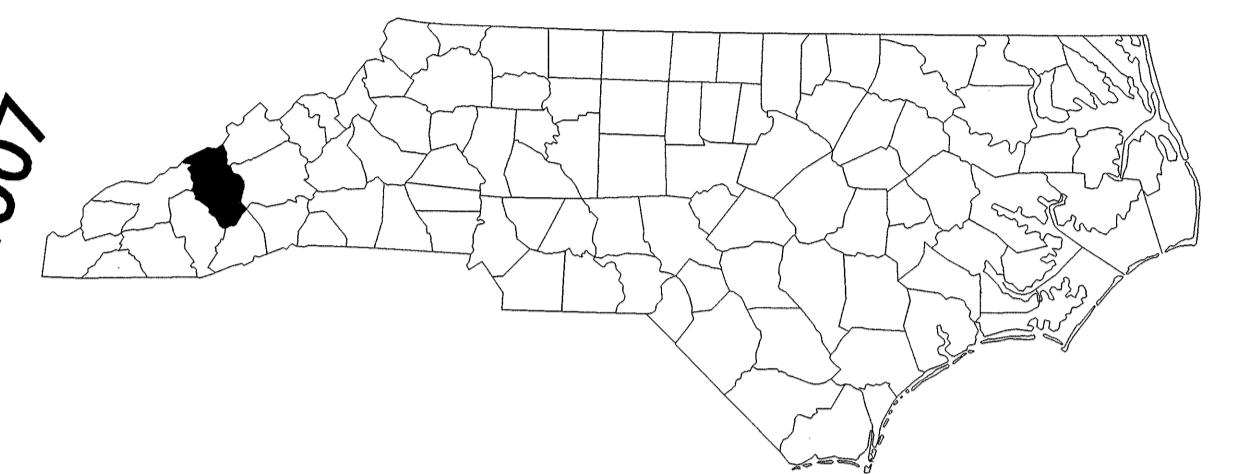
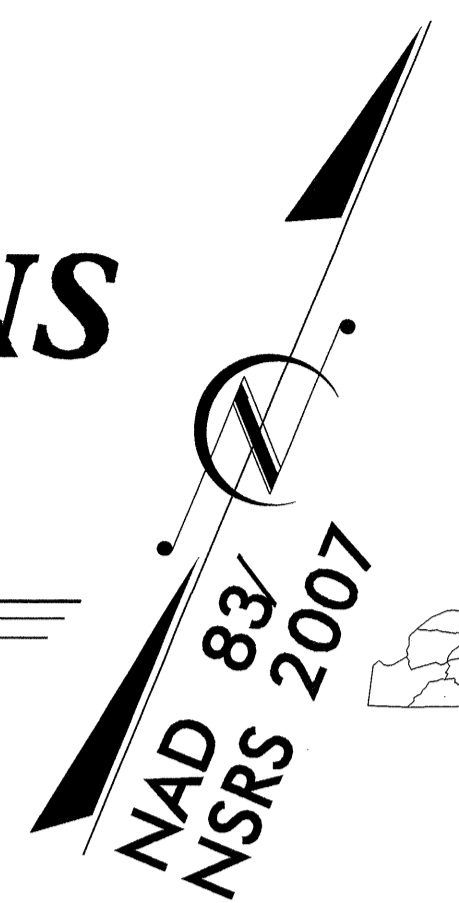
| | |
|------------|-----------|
| T.I.P. NO. | SHEET NO. |
| K-5002 | UO-1 |

STATE OF NORTH CAROLINA
DIVISION OF HIGHWAYS

**UTILITIES BY OTHERS PLANS
HAYWOOD COUNTY**

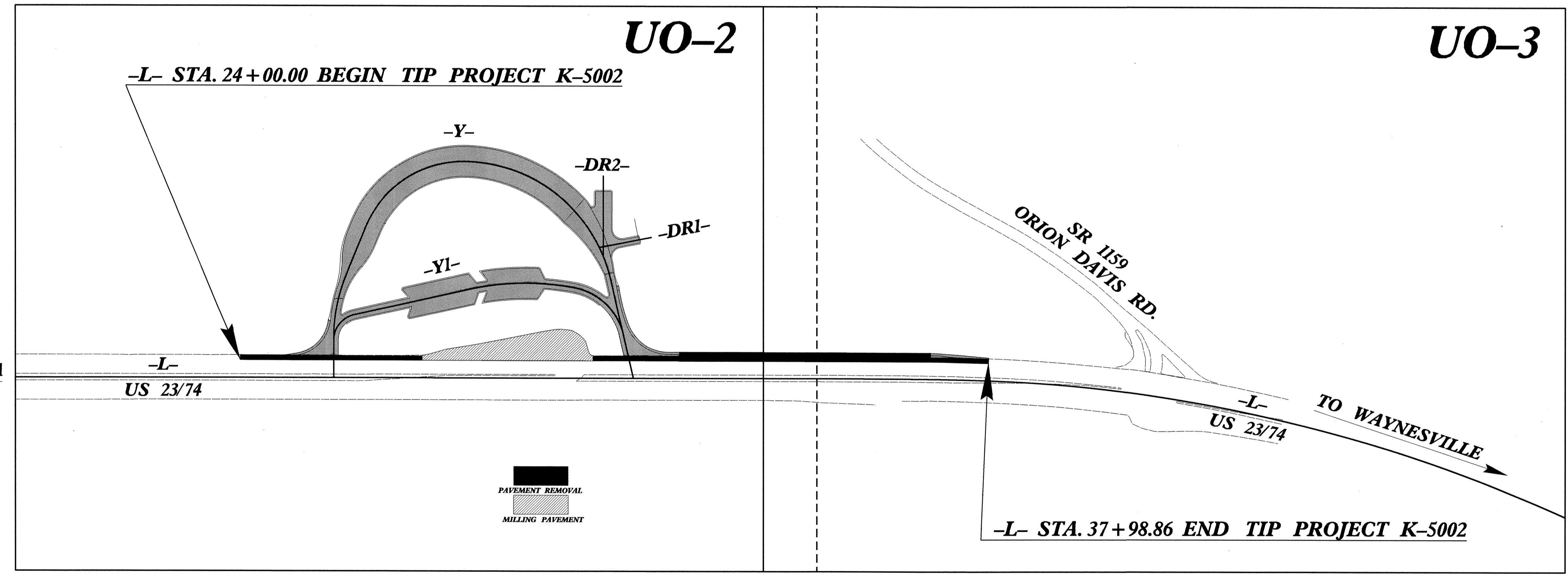
**LOCATION: US 23-74 SOUTHBOUND REST AREA
ON NEW LOCATION AS A COMPANION
TO THE EXISTING NORTHBOND REST AREA**

**TYPE OF WORK: AERIAL POWER AND UNDERGROUND
BROADBAND**

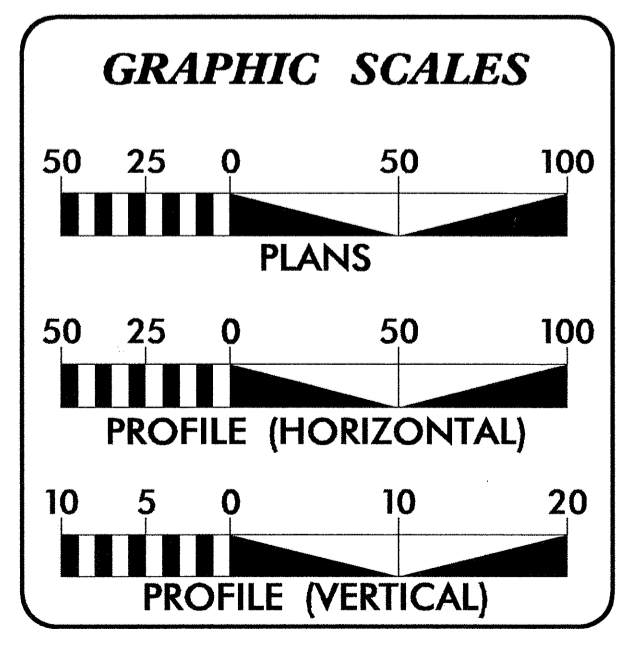


VICINITY MAP

TIP PROJECT: K-5002

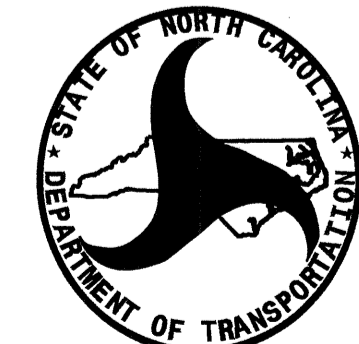


THIS IS A PARTIAL CONTROLLED-ACCESS PROJECT WITH ACCESS BEING LIMITED TO POINTS AS SHOWN ON THE PLANS.



| INDEX OF SHEETS | |
|-----------------|---------------------------------|
| SHEET NO. | DESCRIPTION |
| UO-1 | TITLE SHEET |
| UO-2 THRU UO-3 | UTILITIES BY OTHERS PLAN SHEETS |

- UTILITY OWNERS ON PROJECT**
- (1) AT&T - TELEPHONE
 - (2) DUKE ENERGY - DISTRIBUTION POWER
 - (3) MICROELECTRONICS CENTER OF NORTH CAROLINA (MCNC) - BROADBAND



PREPARED IN THE OFFICE OF:
**DIVISION OF HIGHWAYS
UTILITIES ENGINEERING
SECTION**

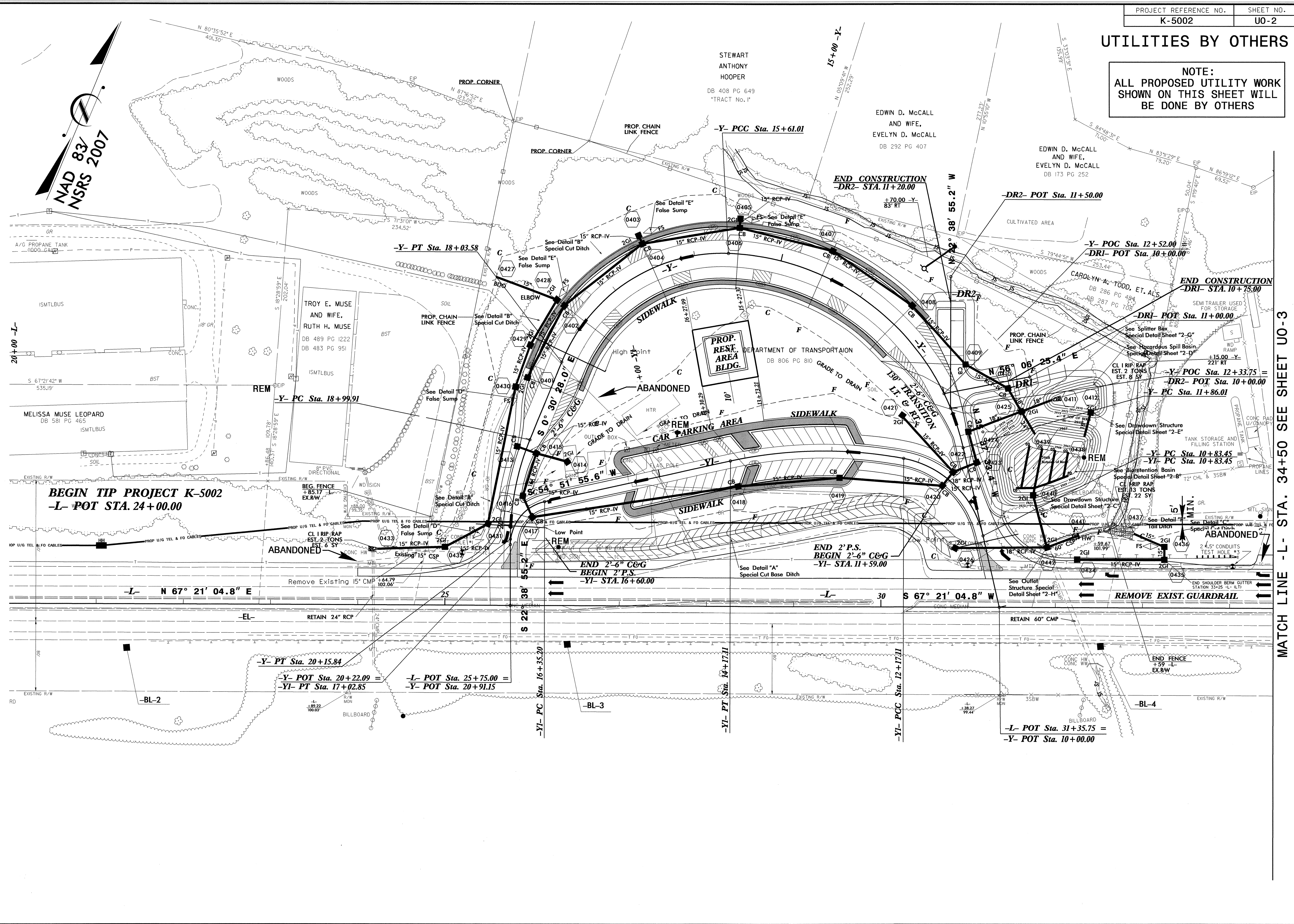
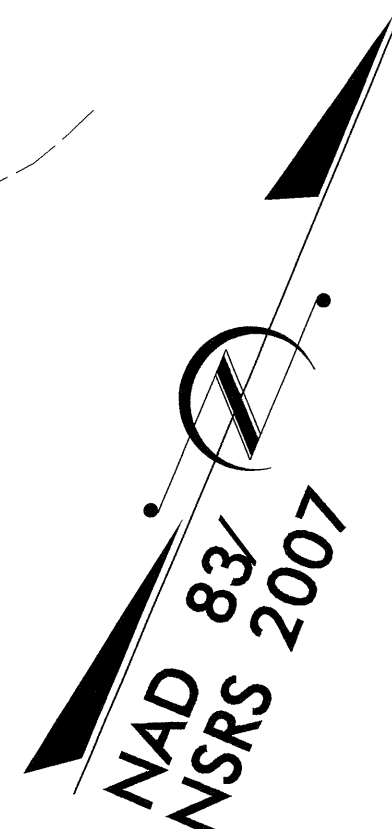
1555 MAIL SERVICES CENTER
RALEIGH NC 27699-1555
PHONE (919) 707-6690
FAX (919) 250-4151

Roger Worthington, P.E. UTILITIES SECTION ENGINEER
Carl A. Barclay, P.E. UTILITIES SQUAD LEADER PROJECT ENGINEER
James E. Swinson UTILITIES PROJECT DESIGNER

05-NOV-2013 08:35 R:\Utilities\Engineering\UB0\Proj\K-5002-Ut - Title_UO1.dgn \$\$\$USERNAME\$\$\$

UTILITIES BY OTHERS

NOTE:
ALL PROPOSED UTILITY WORK
SHOWN ON THIS SHEET WILL
BE DONE BY OTHERS

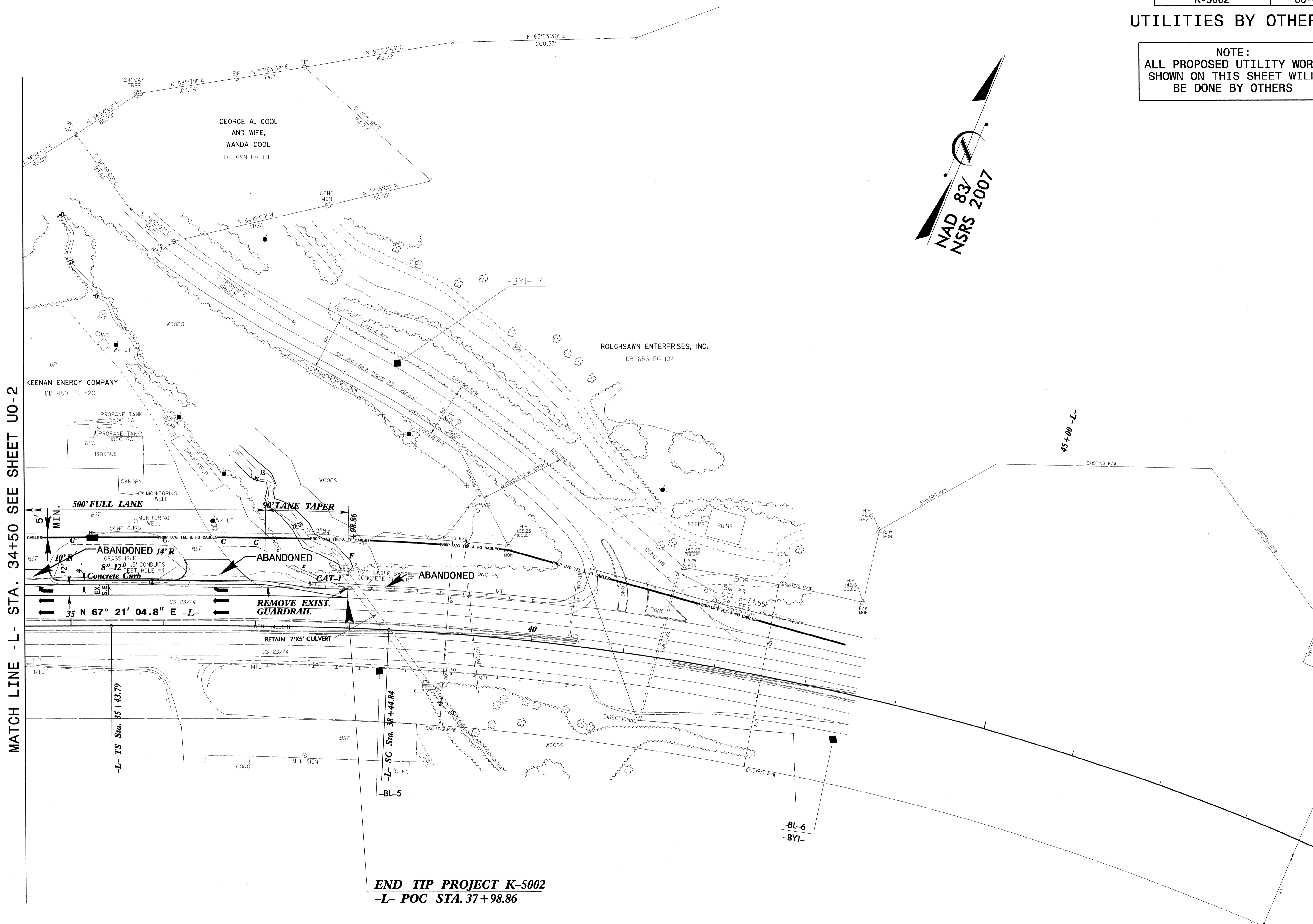
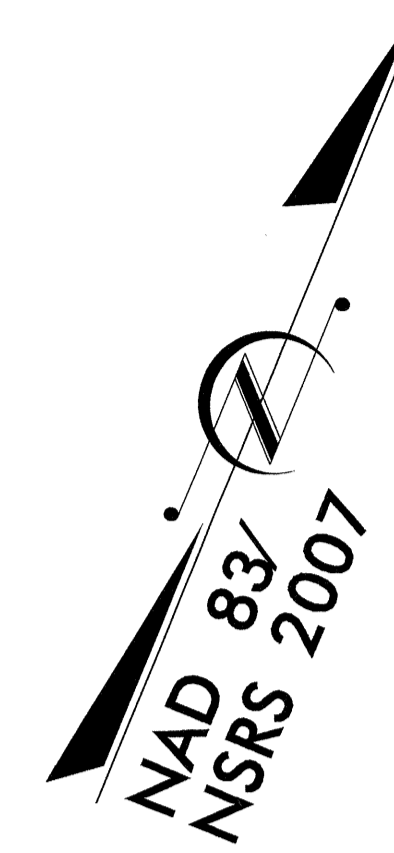


MATCH LINE - L - STA. 34+50 SEE SHEET UO-3

24-OCT-2013 16:00 \\lites\Engineering\Projects\K-5002-Ut-4_UO2_psh.dgn

UTILITIES BY OTHERS

NOTE:
ALL PROPOSED UTILITY WORK
SHOWN ON THIS SHEET WILL
BE DONE BY OTHERS



MATCH LINE -L- STA. 34+50 SEE SHEET U0-2

END TIP PROJECT K-5002
-L- POC STA. 37+98.86

5/14/09
24-OCT-2013 15:58
I:\t\ess\eng\p\proj\K-5002-U0-3.psh.dgn