

09/08/99
 19-NOV-2013 15:17
 R:\Utilities\Engineering\UC\Proj\4928_UT_Title_UC1.psh.dgn
 \$\$\$USERNAME\$\$\$

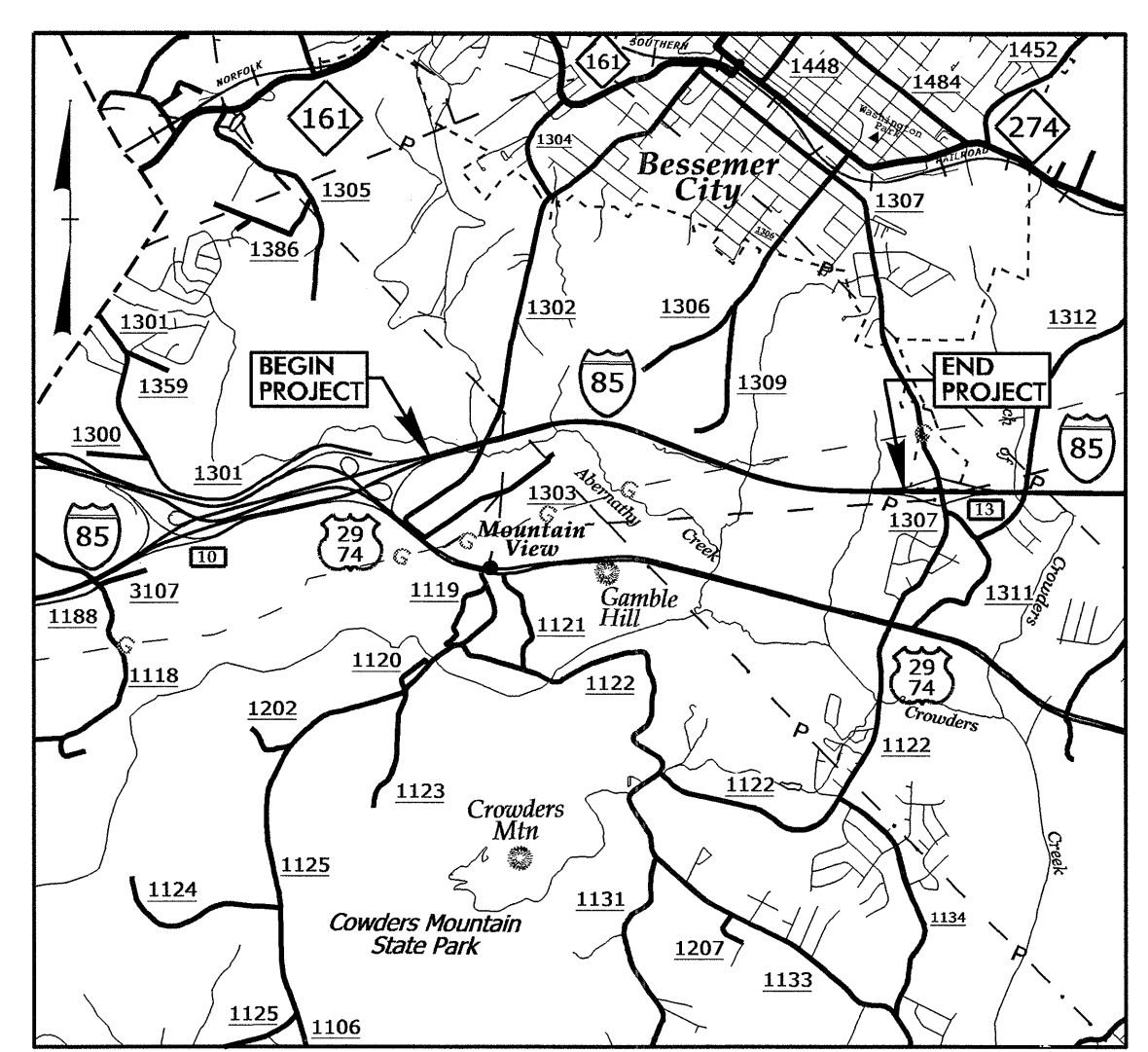
TIP PROJECT: I-4928

T.I.P. NO.	SHEET NO.
I-4928	UC-1

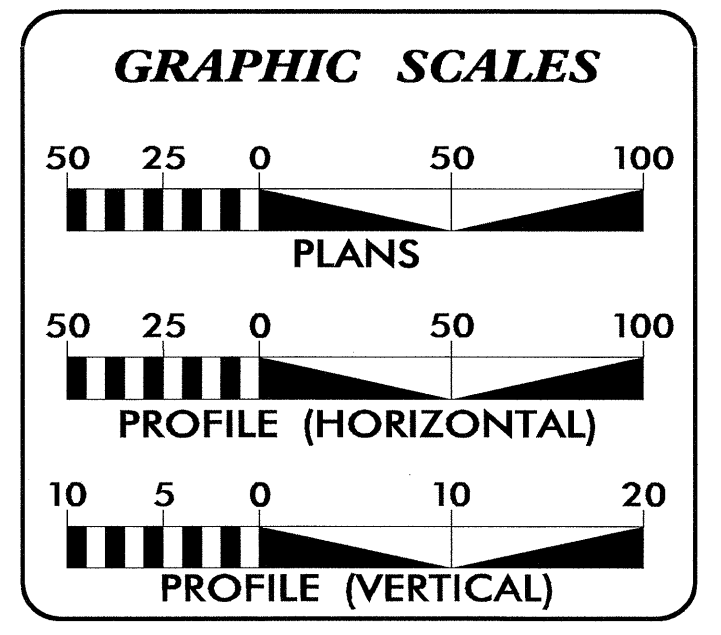
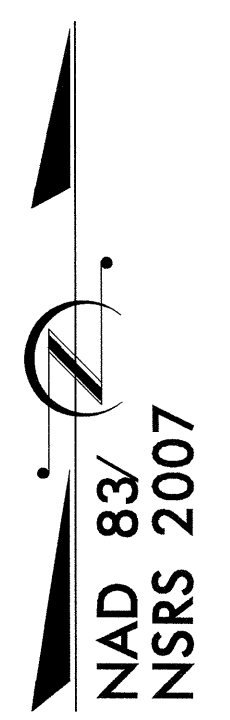
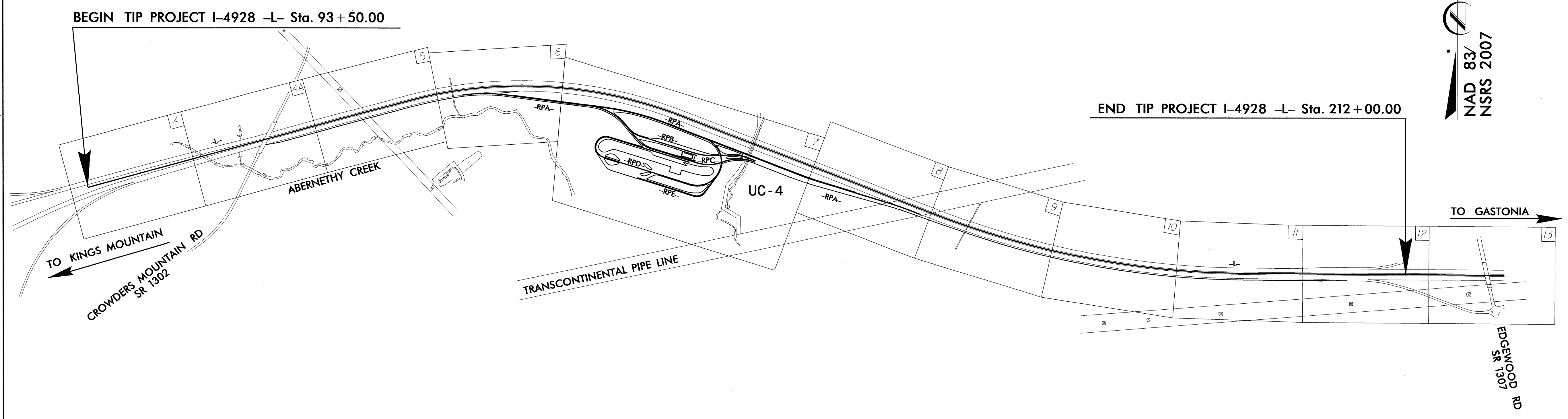
STATE OF NORTH CAROLINA
DIVISION OF HIGHWAYS

**UTILITY CONSTRUCTION PLANS
GASTON COUNTY**

LOCATION: I-85 NB WEIGH STATION FROM SR 1302 TO SR 1307
TYPE OF WORK: GRAVITY SEWER RELOCATION

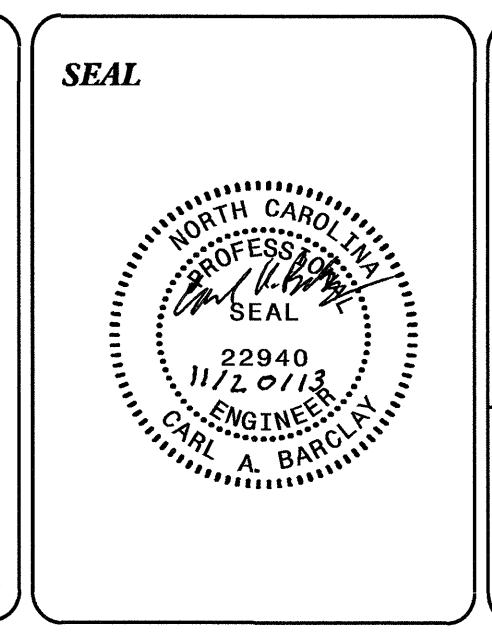


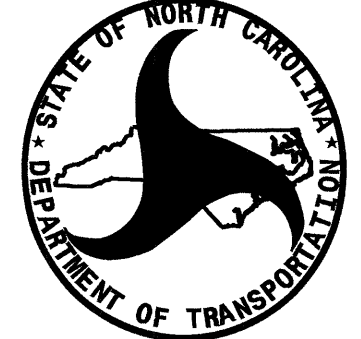
VICINITY MAP



SHEET NO.	DESCRIPTION
UC-1	UTILITY CONSTRUCTION TITLE SHEET
UC-2	UTILITY CONSTRUCTION SYMBOLOGY SHEET
UC-3	UTILITY CONSTRUCTION GENERAL NOTES AND DETAIL SHEET
UC-4	UTILITY CONSTRUCTION PLAN SHEET
UC-5 THRU UC-7	UTILITY CONSTRUCTION PROFILE PLAN SHEETS

SEWER OWNER ON PROJECT
(1) SANITARY GRAVITY SEWER - BESSEMER CITY




 PREPARED IN THE OFFICE OF:
DIVISION OF HIGHWAYS
UTILITIES UNIT
UTILITIES ENGINEERING
 1555 MAIL SERVICES CENTER
 RALEIGH NC 27699-1555
 PHONE (919) 707-6690
 FAX (919) 250-4151

Roger Worthington, P.E. UTILITIES SECTION ENGINEER
Carl Barclay, P.E. UTILITIES SQUAD LEADER PROJECT ENGINEER
James E. Swinson UTILITIES PROJECT DESIGNER

STATE OF NORTH CAROLINA
DIVISION OF HIGHWAYS

UTILITIES PLAN SHEET SYMBOLS

PROPOSED WATER SYMBOLS

Water Line (Sized as Shown)	
11 1/4 Degree Bend	
22 1/2 Degree Bend	
45 Degree Bend	
90 Degree Bend	
Plug	
Tee	
Cross	
Reducer	
Gate Valve	
Butterfly Valve	
Tapping Valve	
Line Stop	
Line Stop with Bypass	
Blow Off	
Fire Hydrant	
Relocate Fire Hydrant	
Remove Fire Hydrant	REM FH
Water Meter	
Relocate Water Meter	
Remove Water Meter	REM WM
Water Pump Station	PS(W)
RPZ Backflow Preventer	
DCV Backflow Preventer	
Relocate RPZ Backflow Preventer	
Relocate DCV Backflow Preventer	

PROPOSED SEWER SYMBOLS

Gravity Sewer Line (Sized as Shown)	
Force Main Sewer Line (Sized as Shown)	
Manhole (Sized per Note)	
Sewer Pump Station	PS(SS)

PROPOSED MISCELLANEOUS UTILITIES SYMBOLS

Power Pole	
Telephone Pole	
Joint Use Pole	
Telephone Pedestal	
Utility Line by Others (Type as Shown)	
Trenchless Installation	
Encasement by Open Cut	
Encasement	

Thrust Block	
Air Release Valve	
Utility Vault	
Concrete Pier	
Steel Pier	
Plan Note	
Pay Item Note	

NOTE
PAY ITEM

EXISTING UTILITIES SYMBOLS

Power Pole		*Underground Power Line	
Telephone Pole		*Underground Telephone Cable	
Joint Use Pole		*Underground Telephone Conduit	
Utility Pole		*Underground Fiber Optics Telephone Cable	
Utility Pole with Base		*Underground TV Cable	
H-Frame Pole		*Underground Fiber Optics TV Cable	
Power Transmission Line Tower		*Underground Gas Pipeline	
Water Manhole		Aboveground Gas Pipeline	
Power Manhole		*Underground Water Line	
Telephone Manhole		Aboveground Water Line	
Sanitary Sewer Manhole		*Underground Gravity Sanitary Sewer Line	
Hand Hole for Cable		Aboveground Gravity Sanitary Sewer Line	
Power Transformer		*Underground SS Forced Main Line	
Telephone Pedestal		Underground Unknown Utility Line	
CATV Pedestal		SUE Test Hole	
Gas Valve		Water Meter	
Gas Meter		Water Valve	
Located Miscellaneous Utility Object		Fire Hydrant	
Abandoned According to Utility Records	AATUR	Sanitary Sewer Cleanout	
End of Information	E.O.I.		

*For Existing Utilities
 Utility Line Drawn from Record (Type as Shown)
 Designated Utility Line (Type as Shown)

5/14/99
20-OCT-2013 08:55
REV: 2/1/2012

PROJECT REFERENCE NO.	SHEET NO.
I-4928	UC-3
DESIGNED BY: JES	
DRAWN BY: JES	
CHECKED BY: CAB	
APPROVED BY: CAB	
REVISED:	
NORTH CAROLINA DEPARTMENT OF TRANSPORTATION	
UTILITIES ENGINEERING SEC. PHONE: (919) 707-6690 FAX: (919) 250-4151	
UTILITY CONSTRUCTION PLANS ONLY	

UTILITY CONSTRUCTION

GENERAL NOTES:

1. THE PROPOSED UTILITY CONSTRUCTION SHALL MEET THE APPLICABLE REQUIREMENTS OF THE NC DEPARTMENT OF TRANSPORTATION'S "STANDARD SPECIFICATIONS FOR ROADS AND STRUCTURES" DATED JANUARY 2012.
2. THE EXISTING UTILITY BELONGS TO BESSEMER CITY AND IS MAINTAINED BY TWO RIVERS UTILITIES .
3. ALL WATER LINES TO BE INSTALLED WITHIN COMPLIANCE OF THE RULES AND REGULATIONS OF THE NORTH CAROLINA DEPARTMENT OF ENVIRONMENTAL AND NATURAL RESOURCES, DIVISION OF ENVIRONMENTAL HEALTH. ALL SEWER LINES TO BE INSTALLED WITHIN COMPLIANCE OF THE RULES AND REGULATIONS OF THE NORTH CAROLINA DEPARTMENT OF ENVIRONMENT AND NATURAL RESOURCES, DIVISION OF WATER QUALITY. PERFORM ALL WORK IN ACCORDANCE WITH THE APPLICABLE PLUMBING CODES.
4. THE UTILITY OWNER OWNS THE EXISTING UTILITY FACILITIES AND WILL OWN THE NEW UTILITY FACILITIES AFTER ACCEPTANCE BY THE DEPARTMENT. THE DEPARTMENT OWNS THE CONSTRUCTION CONTRACT AND HAS ADMINISTRATIVE AUTHORITY. COMMUNICATIONS AND DECISIONS BETWEEN THE CONTRACTOR AND UTILITY OWNER ARE NOT BINDING UPON THE DEPARTMENT OR THIS CONTRACT UNLESS AUTHORIZED BY THE ENGINEER. AGREEMENTS BETWEEN THE UTILITY OWNER AND CONTRACTOR FOR THE WORK THAT IS NOT PART OF THIS CONTRACT OR IS SECONDARY TO THIS CONTRACT ARE ALLOWED, BUT ARE NOT BINDING UPON THE DEPARTMENT.
5. PROVIDE ACCESS FOR THE DEPARTMENT PERSONNEL AND THE OWNER'S REPRESENTATIVES TO ALL PHASES OF CONSTRUCTION. NOTIFY DEPARTMENT PERSONNEL AND THE UTILITY OWNER TWO WEEKS PRIOR TO COMMENCEMENT OF ANY WORK AND ONE WEEK PRIOR TO SERVICE INTERRUPTION. KEEP UTILITY OWNERS' REPRESENTATIVES INFORMED OF WORK PROGRESS AND PROVIDE OPPROTUNITY FOR INSPECTION OF CONSTRUCTION AND TESTING.

6. THE PLANS DEPICT THE BEST AVAILABLE INFORMATION FOR THE LOCATION, SIZE, AND TYPE OF MATERIAL FOR ALL EXISTING UTILITIES. MAKE INVESTIGATIONS FOR DETERMINING THE EXACT LOCATION, SIZE, AND TYPE MATERIAL OF THE EXISTING FACILITIES AS NECESSARY FOR THE CONSTRUCTION OF THE PROPOSED UTILITIES AND FOR AVOIDING DAMAGE TO EXISTING FACILITIES. REPAIR ANY DAMAGE INCURRED TO EXISTING FACILITIES TO THE ORIGINAL OR BETTER CONDITION AT NO ADDITIONAL COST TO THE DEPARTMENT.

7. MAKE FINAL CONNECTIONS OF THE NEW WORK TO THE EXISTING SYSTEM WHERE INDICATED ON THE PLANS, AS REQUIRED TO FIT THE ACTUAL CONDITIONS, OR AS DIRECTED.

8. MAKE CONNECTIONS BETWEEN EXISTING AND PROPOSED UTILITIES AT TIMES MOST CONVENIENT TO THE PUBLIC, WITHOUT ENDANGERING THE UTILITY SERVICE, AND IN ACCORDANCE WITH THE UTILITY OWNER'S REQUIREMENTS. MAKE CONNECTIONS ON WEEKENDS, AT NIGHT, AND ON HOLIDAYS IF NECESSARY.

9. ALL UTILITY MATERIALS SHALL BE APPROVED PRIOR TO DELIVERY TO THE PROJECT. SEE 1500-7, " SUBMITTALS AND RECORDS" IN SECTION 1500 OF THE STANDARD SPECIFICATIONS.

PROJECT SPECIFIC NOTES:

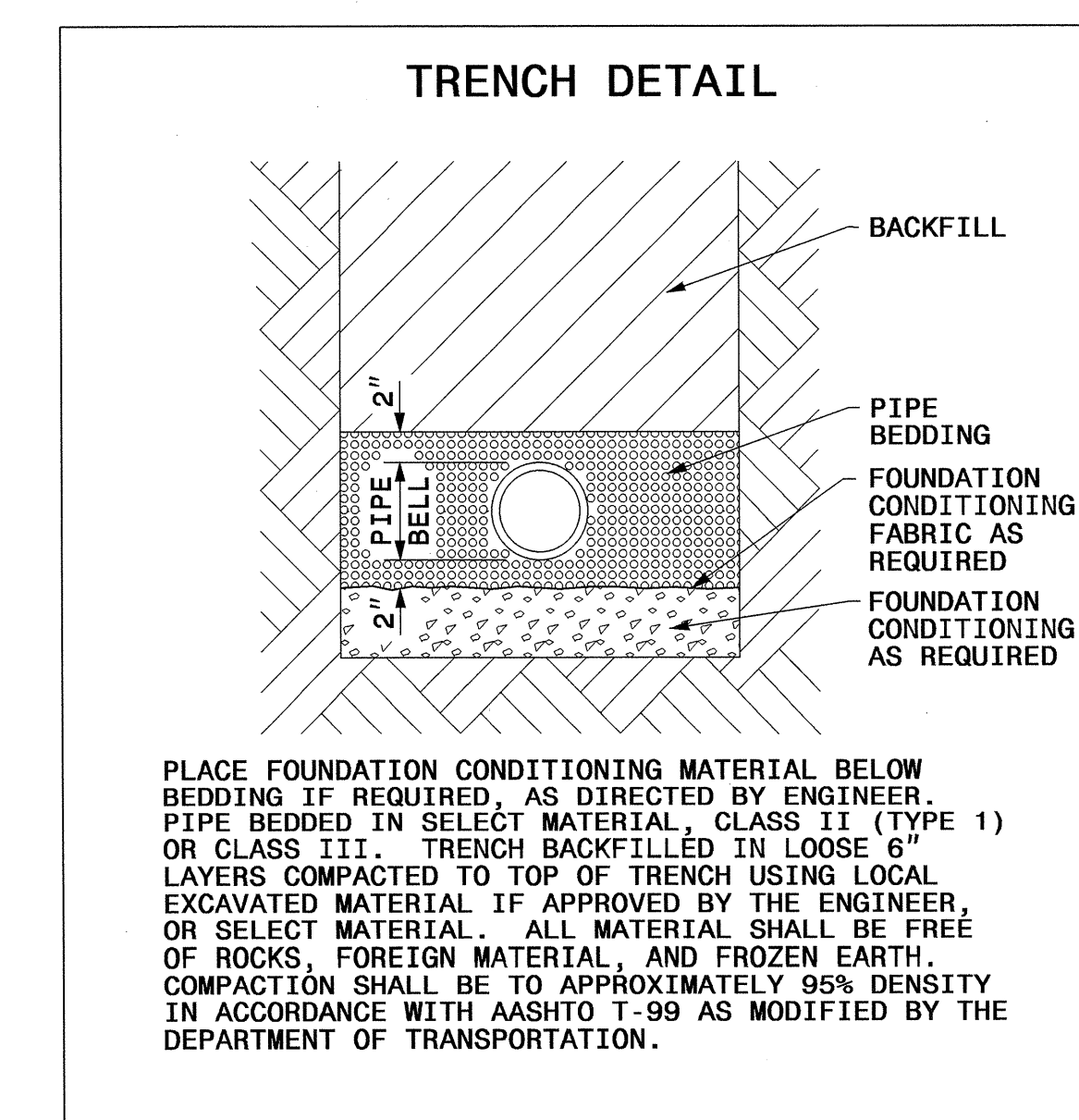
1. CONTRACTOR'S ATTENTION IS DIRECTED TO SECTIONS 102, 107, AND 1550 OF THE 2012 STANDARD SPECIFICATIONS CONCERNING TRENCHLESS INSTALLATION. IT IS CONTRACTOR'S RESPONSIBILITY TO HAVE BORE DESIGNED AND SEALED BY A LICENSED NORTH CAROLINA PROFESSIONAL ENGINEER. NO DAMAGE IS ALLOWED TO RIVER, WETLANDS, OR BUFFER ZONES.

LIST OF STANDARD DRAWINGS

- 1520.01 SEWER CLEAN OUT
- 1525.06 PRECAST CONCRETE SANITARY SEWER MANHOLE WITH CAST-IN-PLACE BOTTOM

UTILITY CONSTRUCTION

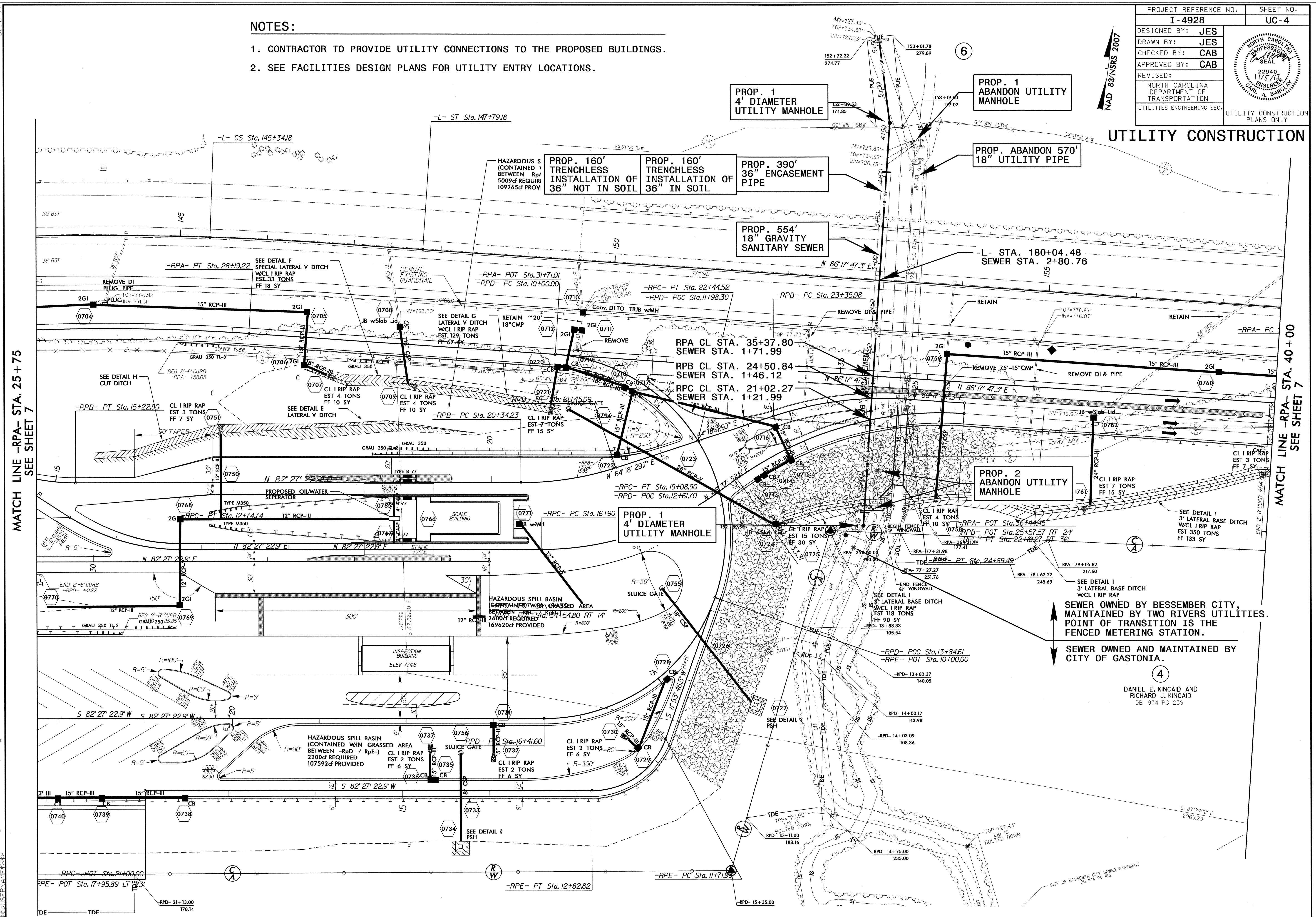
PROJECT TYPICAL DETAIL



PROJECT REFERENCE NO.	SHEET NO.
I-4928	UC-4
DESIGNED BY: JES	
DRAWN BY: JES	
CHECKED BY: CAB	
APPROVED BY: CAB	
REVISED BY:	
NORTH CAROLINA DEPARTMENT OF TRANSPORTATION	
UTILITIES ENGINEERING SEC.	
UTILITY CONSTRUCTION PLANS ONLY	

- NOTES:**
- CONTRACTOR TO PROVIDE UTILITY CONNECTIONS TO THE PROPOSED BUILDINGS.
 - SEE FACILITIES DESIGN PLANS FOR UTILITY ENTRY LOCATIONS.

UTILITY CONSTRUCTION



MATCH LINE -RPA- STA. 25 + 75
SEE SHEET 7

MATCH LINE -RPA- STA. 40 + 00
SEE SHEET 7

SEWER OWNED BY BESSEMER CITY, MAINTAINED BY TWO RIVERS UTILITIES. POINT OF TRANSITION IS THE FENCED METERING STATION.

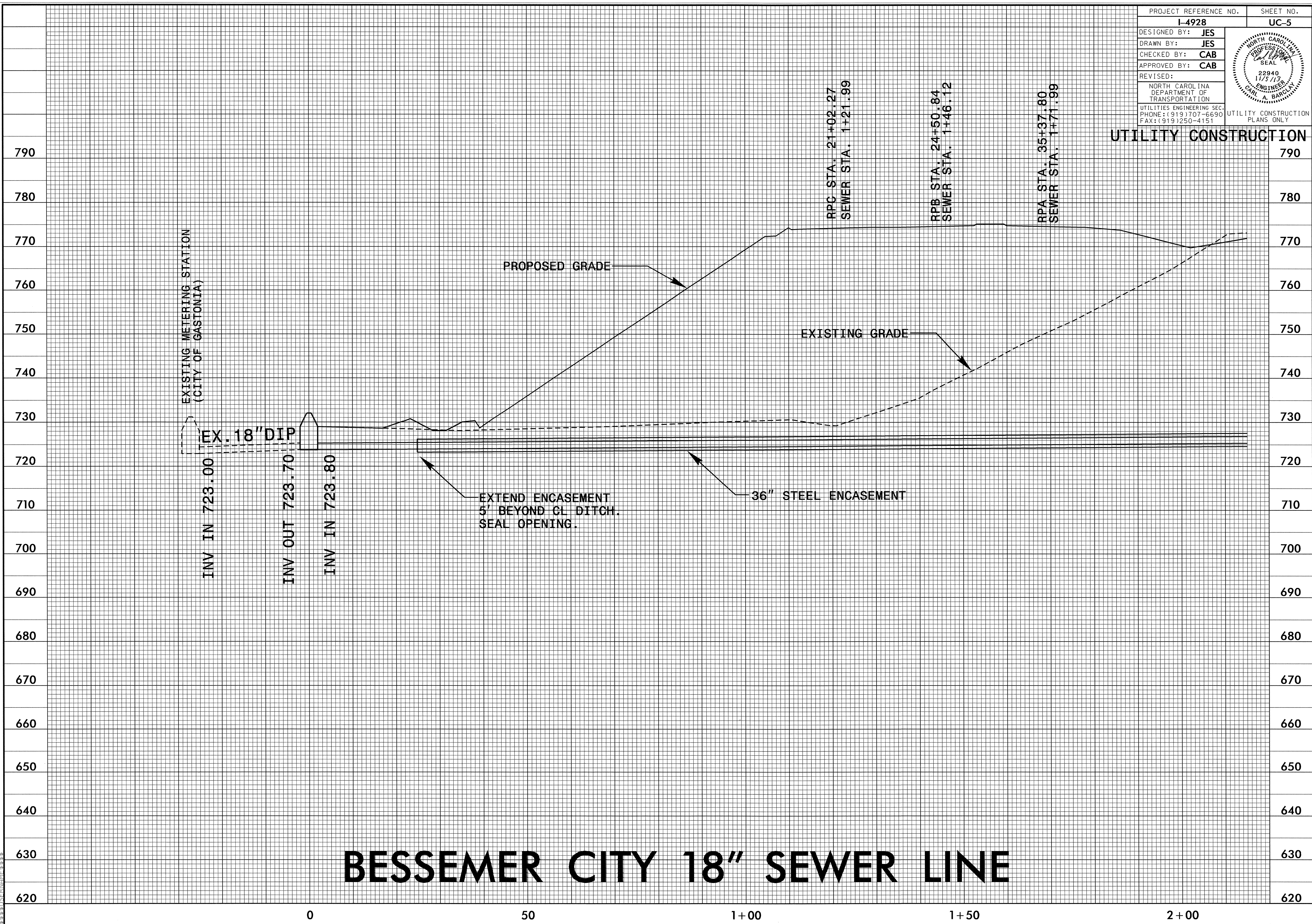
SEWER OWNED AND MAINTAINED BY CITY OF GASTONIA.

4
DANIEL E. KINCAID AND RICHARD J. KINCAID
DB 1974 PG 239

05-NOV-2013 11:26 C:\p\proj\14928-UT_7-UC4-pshdgn

5/14/99

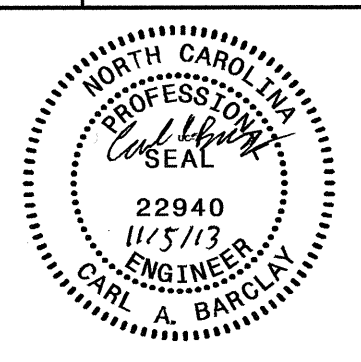
PROJECT REFERENCE NO.	SHEET NO.
I-4928	UC-5
DESIGNED BY: JES	
DRAWN BY: JES	
CHECKED BY: CAB	
APPROVED BY: CAB	
REVISED:	
NORTH CAROLINA DEPARTMENT OF TRANSPORTATION	
UTILITIES ENGINEERING SEC. PHONE: (919) 707-6690 FAX: (919) 250-4151	
UTILITY CONSTRUCTION PLANS ONLY	

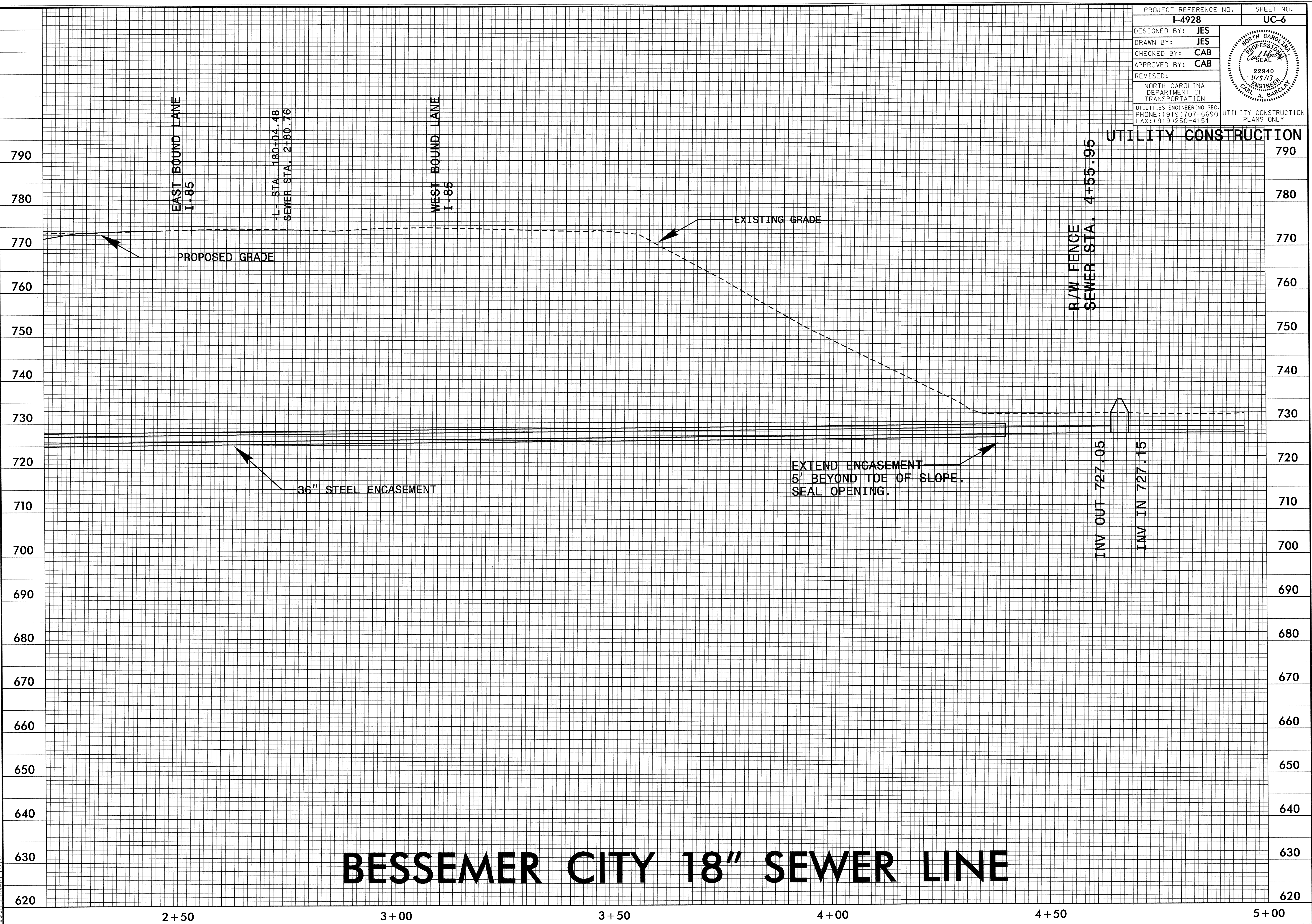


05-NOV-2013 10:44 P:\Utilities\Engineering\UC\Proj\sl-17.dgn

5/14/99

05-NOV-2013 10:12
P:\Utilities\Engineering\UC\Proj\As1-17.dgn
\$\$\$\$\$SRM01F\$\$\$\$\$

PROJECT REFERENCE NO. I-4928	SHEET NO. UC-6
DESIGNED BY: JES	
DRAWN BY: JES	
CHECKED BY: CAB	
APPROVED BY: CAB	
REVISED:	
NORTH CAROLINA DEPARTMENT OF TRANSPORTATION	
UTILITIES ENGINEERING SEC. PHONE: (919) 707-6690 FAX: (919) 250-4151	
UTILITY CONSTRUCTION PLANS ONLY	



BESSEMER CITY 18" SEWER LINE

5/14/99

PROJECT REFERENCE NO. I-4928	SHEET NO. UC-7
DESIGNED BY: JES	
DRAWN BY: JES	
CHECKED BY: CAB	
APPROVED BY: CAB	
REVISED:	
NORTH CAROLINA DEPARTMENT OF TRANSPORTATION	
UTILITIES ENGINEERING SEC. PHONE: (919) 707-6690 FAX: (919) 250-4151	

UTILITY CONSTRUCTION



BESSEMER CITY 18" SEWER LINE

05-NOV-2013 11:11 engineering\UC\Proj\sl-17.dgn
4:43:21 PM

09/08/99

TIP PROJECT: I-4928

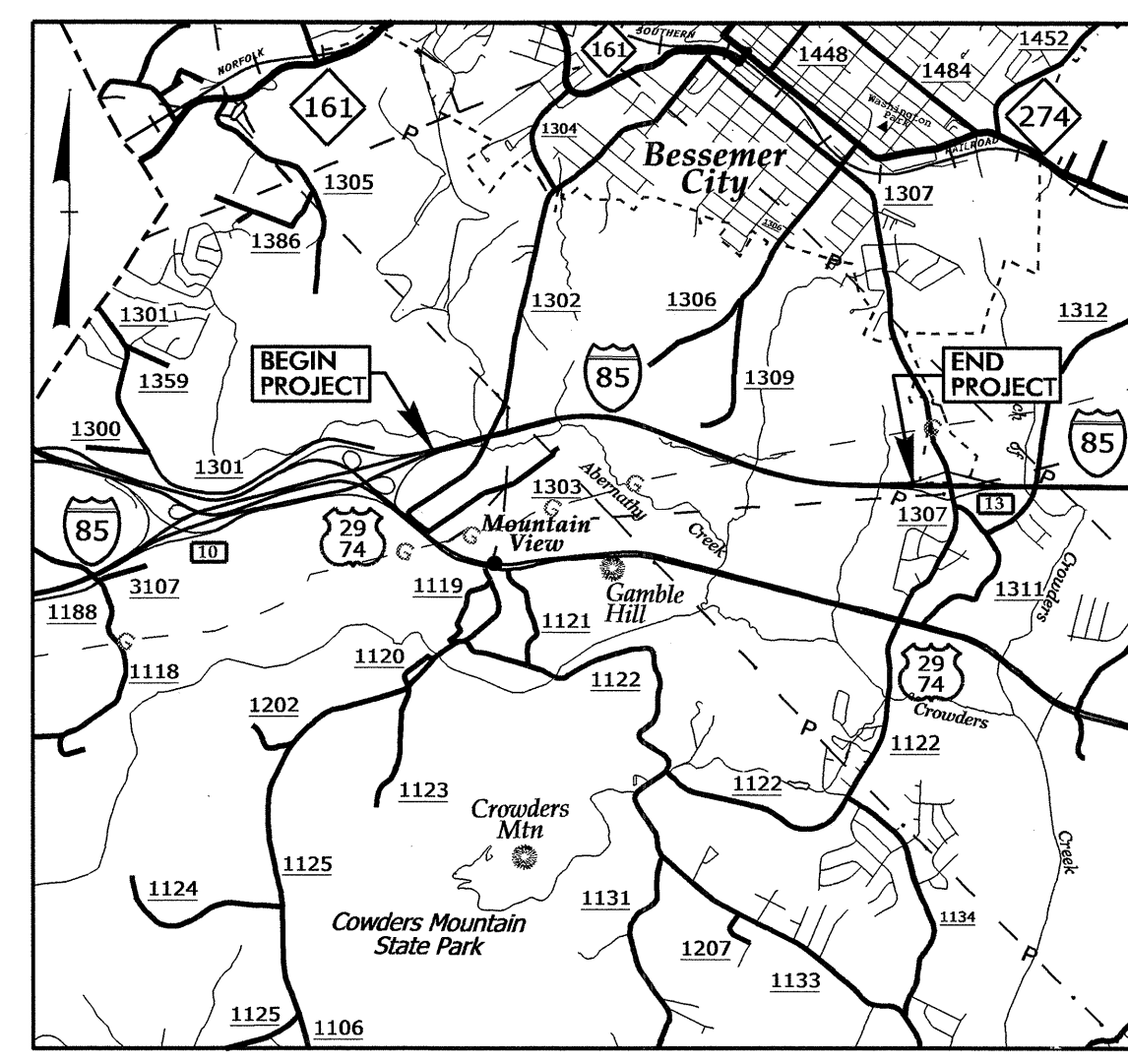
T.I.P. NO.	SHEET NO.
I-4928	UO-1

STATE OF NORTH CAROLINA
DIVISION OF HIGHWAYS

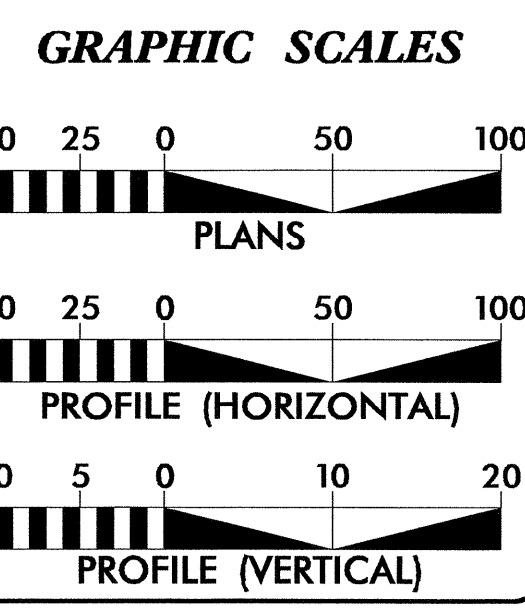
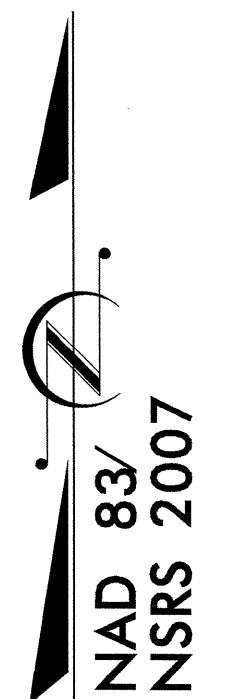
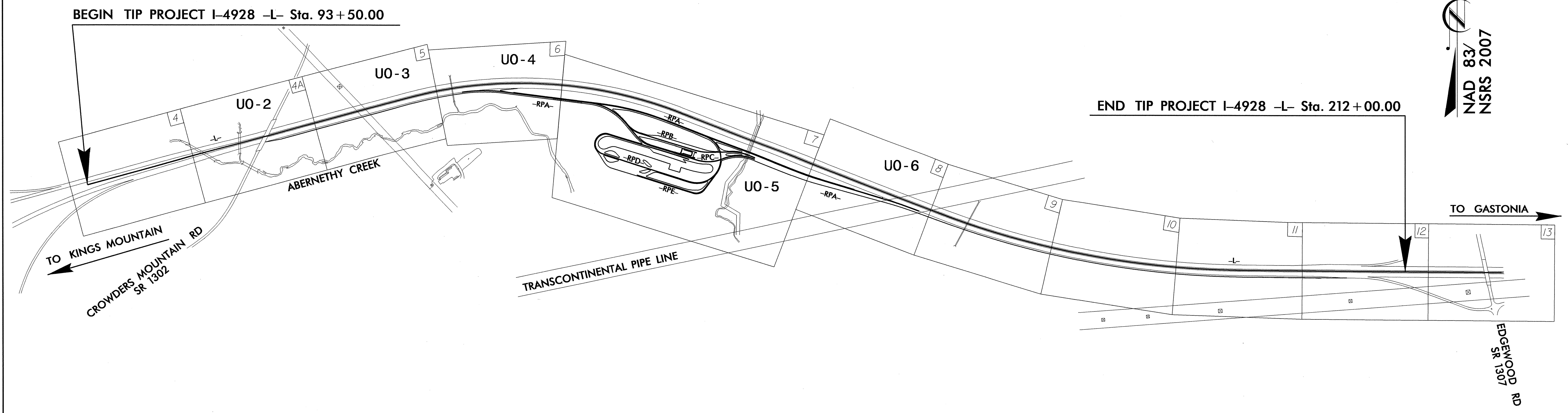
**UTILITIES BY OTHERS PLANS
GASTON COUNTY**

NEW I-85 NBL WEIGH STATION FROM SR 1302 (CROWDERS MOUNTAIN ROAD) TO SR 1307 (EDGEWOOD ROAD)

TYPE OF WORK: DISTRIBUTION POWER RELOCATION



VICINITY MAP

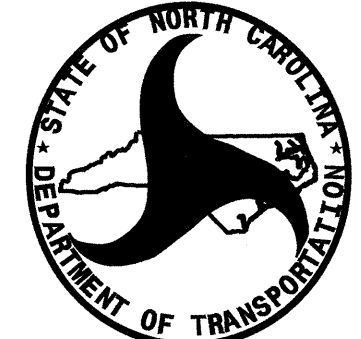


INDEX OF SHEETS

SHEET NO.	DESCRIPTION
UO-1	TITLE SHEET
UO-2 THRU UO-6	UTILITIES BY OTHERS PLAN SHEETS

UTILITY OWNERS ON PROJECT

- DUKE ENERGY - DISTRIBUTION POWER
- WILLIAMS GAS PIPELINE CO. - GAS



PREPARED IN THE OFFICE OF:
**DIVISION OF HIGHWAYS
UTILITIES UNIT
UTILITIES ENGINEERING**

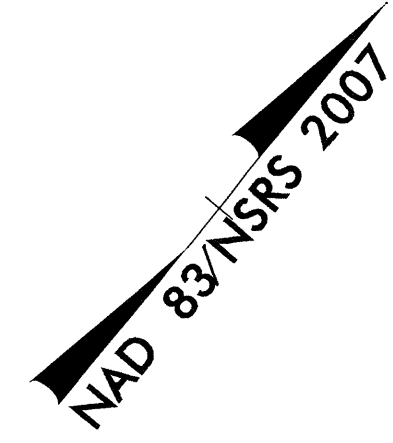
1555 MAIL SERVICES CENTER
RALEIGH NC 27699-1555
PHONE (919) 707-6690
FAX (919) 250-4151

Roger Worthington, P.E. UTILITIES SECTION ENGINEER
Carl Barclay, P.E. UTILITIES SQUAD LEADER PROJECT ENGINEER
James E. Swinson UTILITIES PROJECT DESIGNER

19-NOV-2013 15:20
R:\Utilities\Engineering\UBO\Proj\H4928_UT_Title_UO1.psh.dgn
\$\$\$\$\$USERNAME\$\$\$\$\$

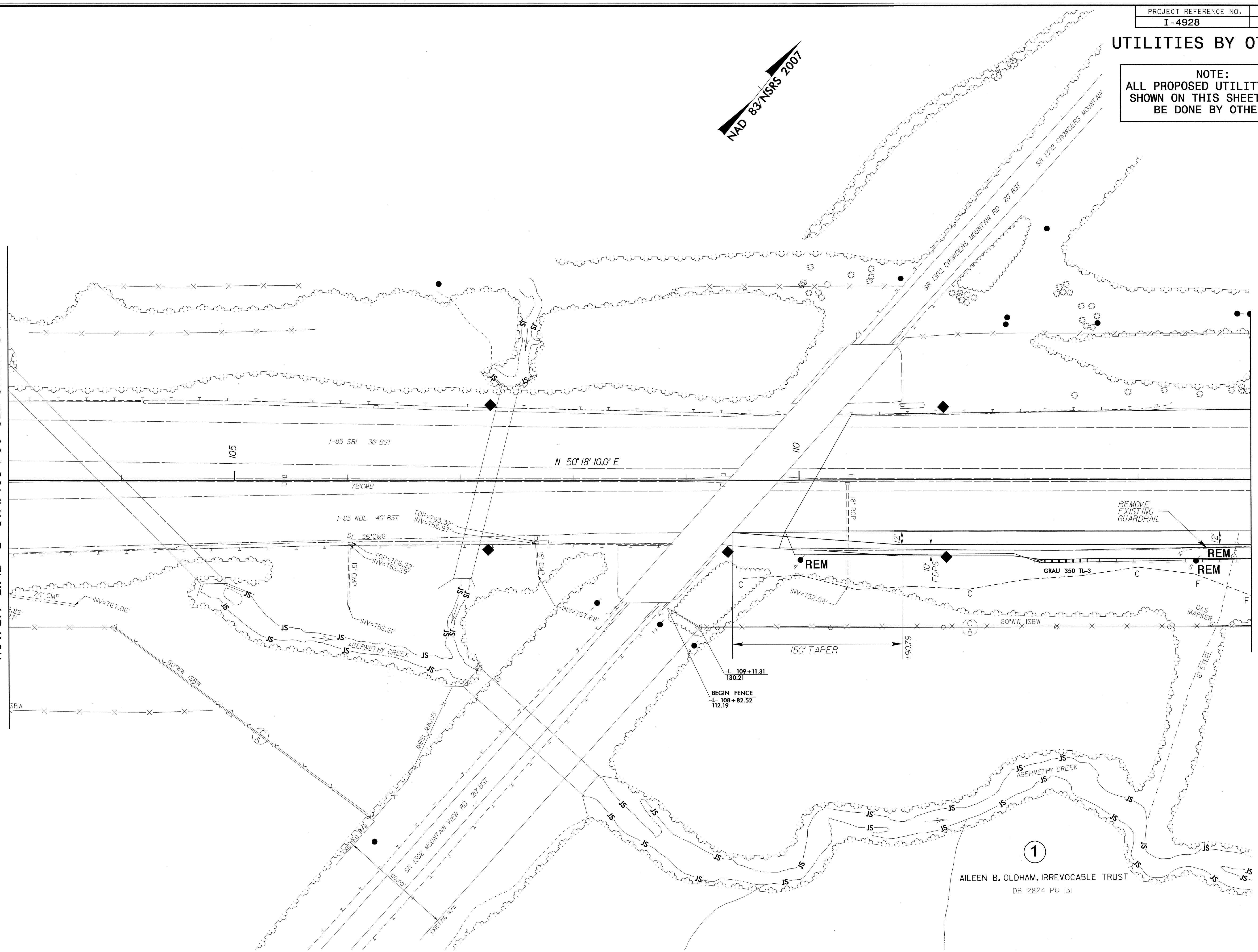
UTILITIES BY OTHERS

NOTE:
ALL PROPOSED UTILITY WORK
SHOWN ON THIS SHEET WILL
BE DONE BY OTHERS



MATCH LINE -L- STA. 103+00 SEE SHEET UO-3

MATCH LINE -L- STA. 114+00 SEE SHEET UO-3



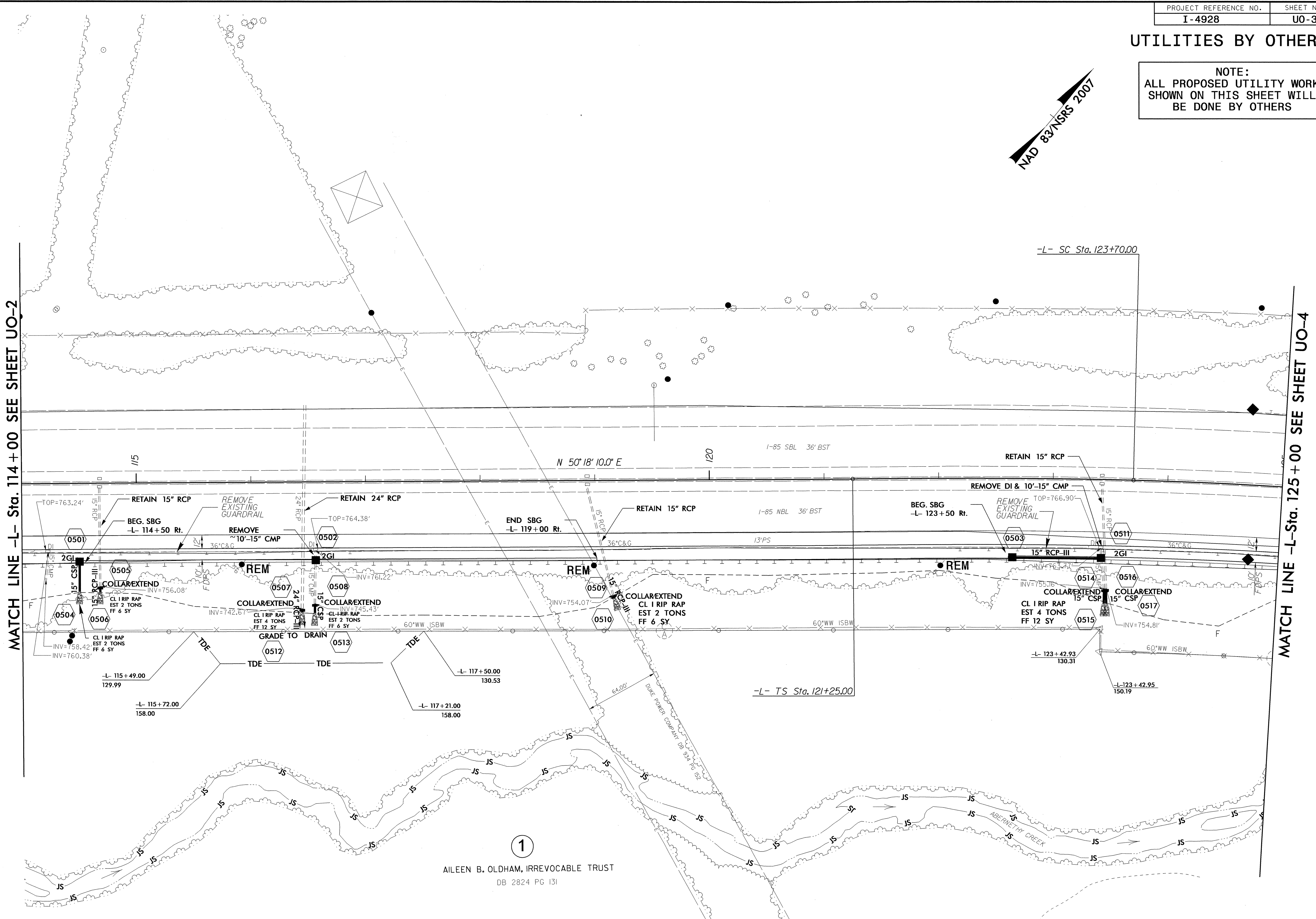
1

AILEEN B. OLDHAM, IRREVOCABLE TRUST
DB 2824 PG 131

05-NOV-2013 17:03 1180 V:\ProJ\14928_UT_4A_U02_psh.dgn
 5/14/99
 1180 V:\ProJ\14928_UT_4A_U02_psh.dgn

UTILITIES BY OTHERS

NOTE:
ALL PROPOSED UTILITY WORK
SHOWN ON THIS SHEET WILL
BE DONE BY OTHERS



MATCH LINE -L- Sta. 114 + 00 SEE SHEET UO-2

MATCH LINE -L- Sta. 125 + 00 SEE SHEET UO-4

1

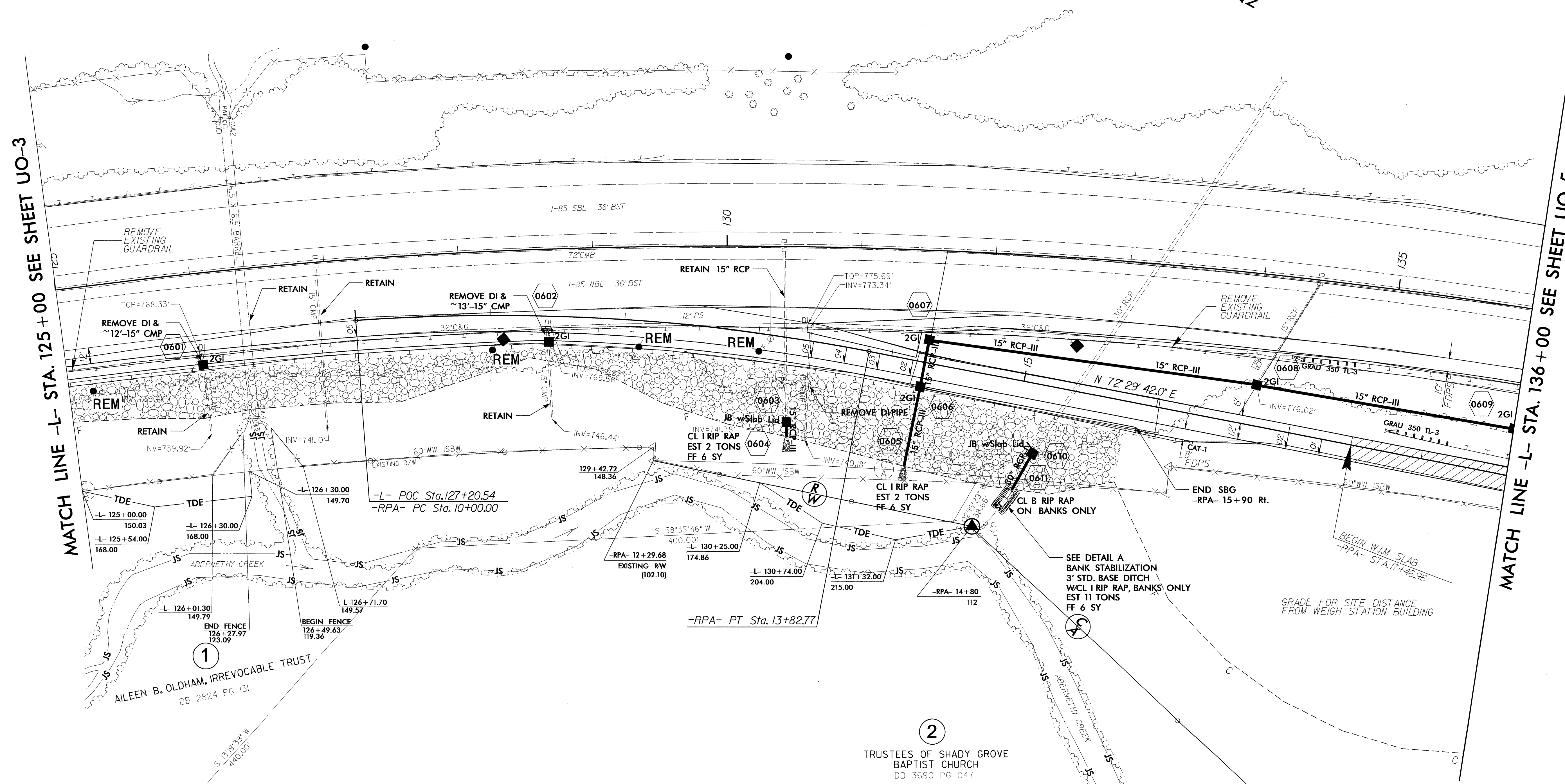
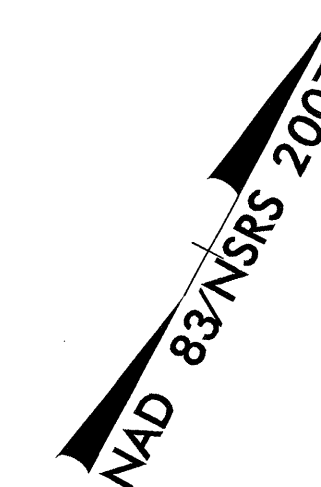
AILEEN B. OLDHAM, IRREVOCABLE TRUST
DB 2824 PG 131

5/14/09

05-NOV-2015 11:05 AM
C:\Users\joshua\Documents\I-4928_U0-3_psh.dgn
JOSHUA PERIN

UTILITIES BY OTHERS

NOTE:
ALL PROPOSED UTILITY WORK
SHOWN ON THIS SHEET WILL
BE DONE BY OTHERS



MATCH LINE -L- STA. 125+00 SEE SHEET UO-3

MATCH LINE -L- STA. 136+00 SEE SHEET UO-5

1
AILEEN B. OLDHAM, IRREVOCABLE TRUST
DB 2824 PG 131

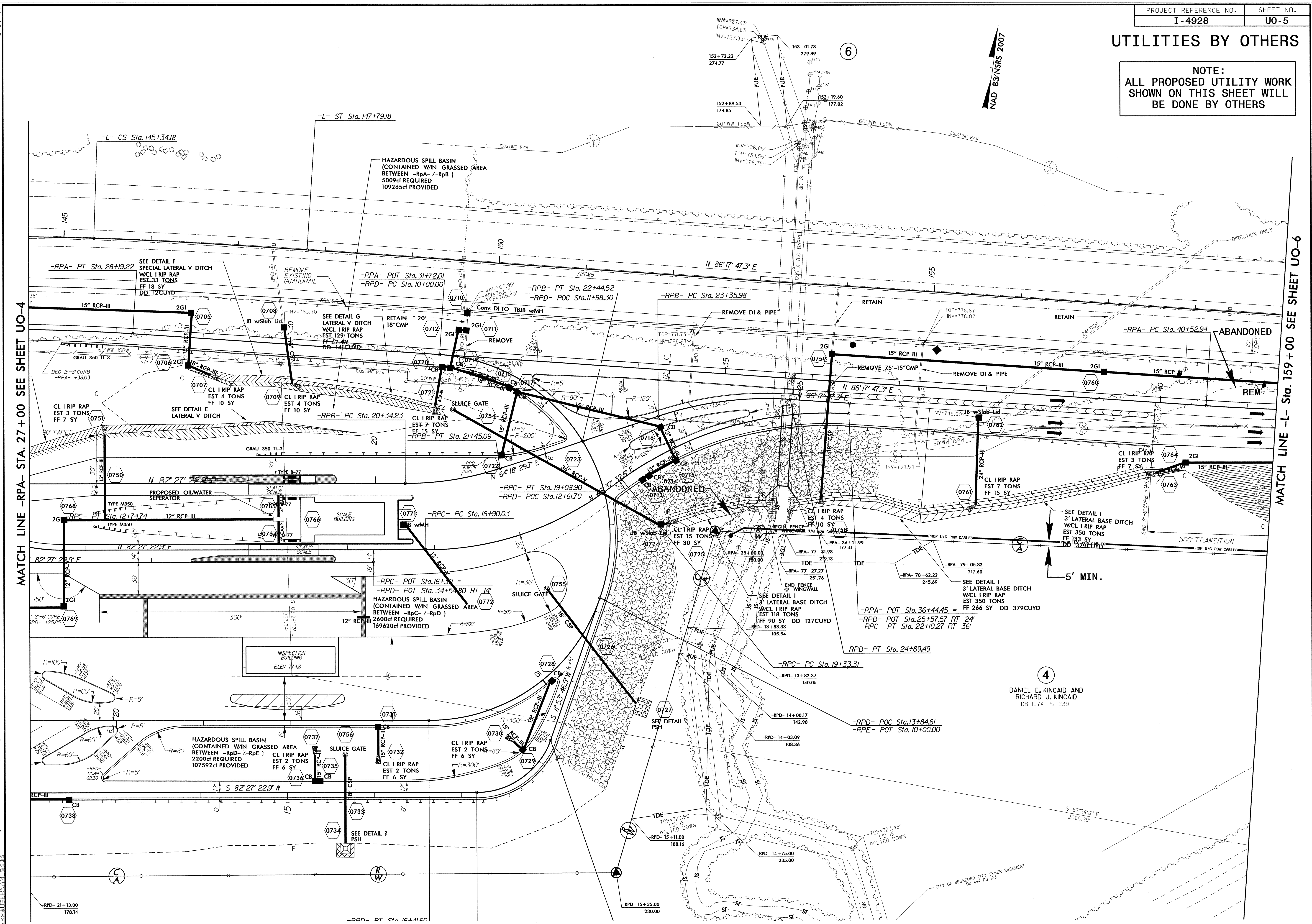
2
TRUSTEES OF SHADY GROVE
BAPTIST CHURCH
DB 3690 PG 047

5/14/99
05-NOV-2013 17:06
I:\Engineering\I-4928\Project\I-4928-UT_6_U04_psh.dgn
I:\Engineering\I-4928\Project\I-4928-UT_6_U04_psh.dgn

UTILITIES BY OTHERS

NOTE:
ALL PROPOSED UTILITY WORK
SHOWN ON THIS SHEET WILL
BE DONE BY OTHERS

NAD 83/NSRS 2007



MATCH LINE -RPA- STA. 27+00 SEE SHEET UO-4

MATCH LINE -L- STA. 159+00 SEE SHEET UO-6

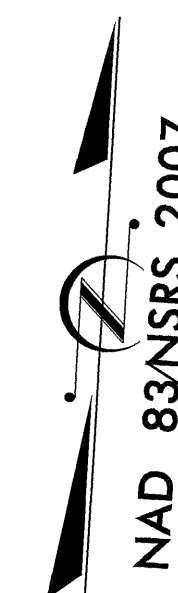
4
DANIEL E. KINCAID AND
RICHARD J. KINCAID
DB 1974 PG 239

5/14/09

07-NOV-2013 10:47:16 AM P:\proj\14928\UT_7_U05_psh.dgn

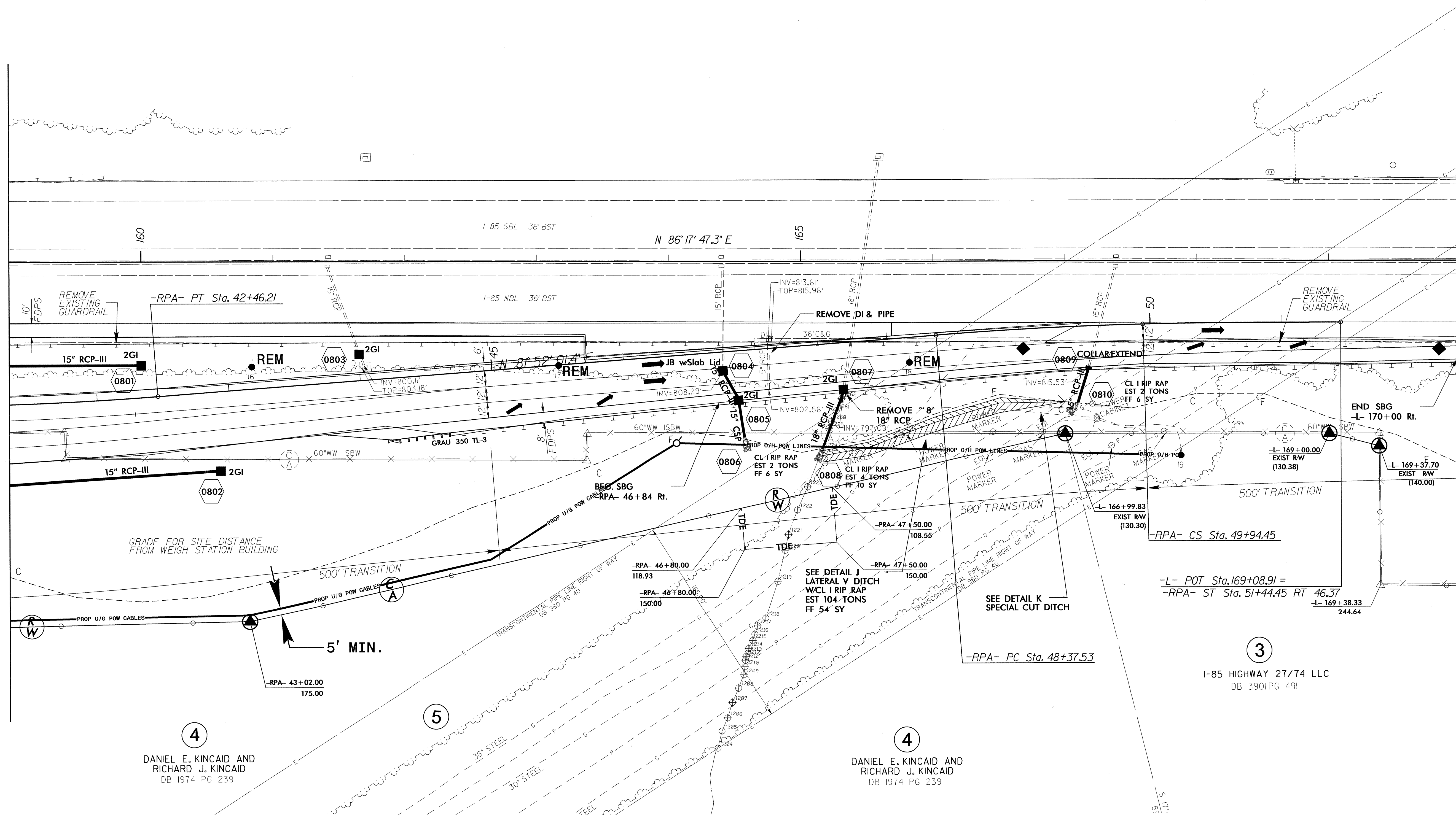
UTILITIES BY OTHERS

NOTE:
ALL PROPOSED UTILITY WORK
SHOWN ON THIS SHEET WILL
BE DONE BY OTHERS



MATCH LINE -L- STA. 159 + 00 SEE SHEET UO-5

MATCH LINE -L- STA. 170 + 00 SEE SHEET 9



4
DANIEL E. KINCAID AND
RICHARD J. KINCAID
DB 1974 PG 239

4
DANIEL E. KINCAID AND
RICHARD J. KINCAID
DB 1974 PG 239

3
I-85 HIGHWAY 27/74 LLC
DB 3901 PG 491

07-NOV-2013 08:33
C:\Users\psh\dgn\Projects\I-4928\UT_8_UO6_psh.dgn
5/14/99