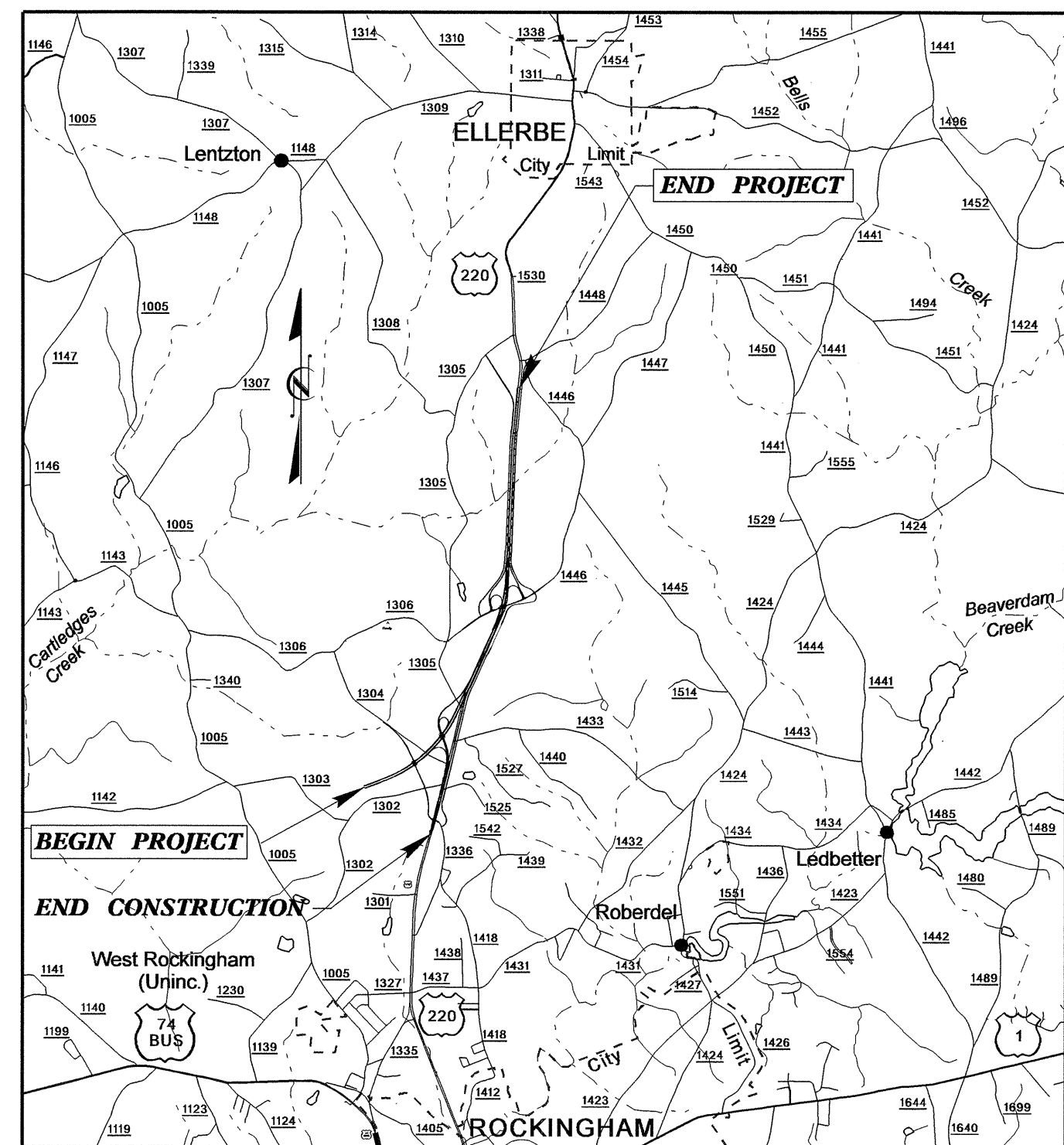


STATE OF NORTH CAROLINA  
DIVISION OF HIGHWAYS

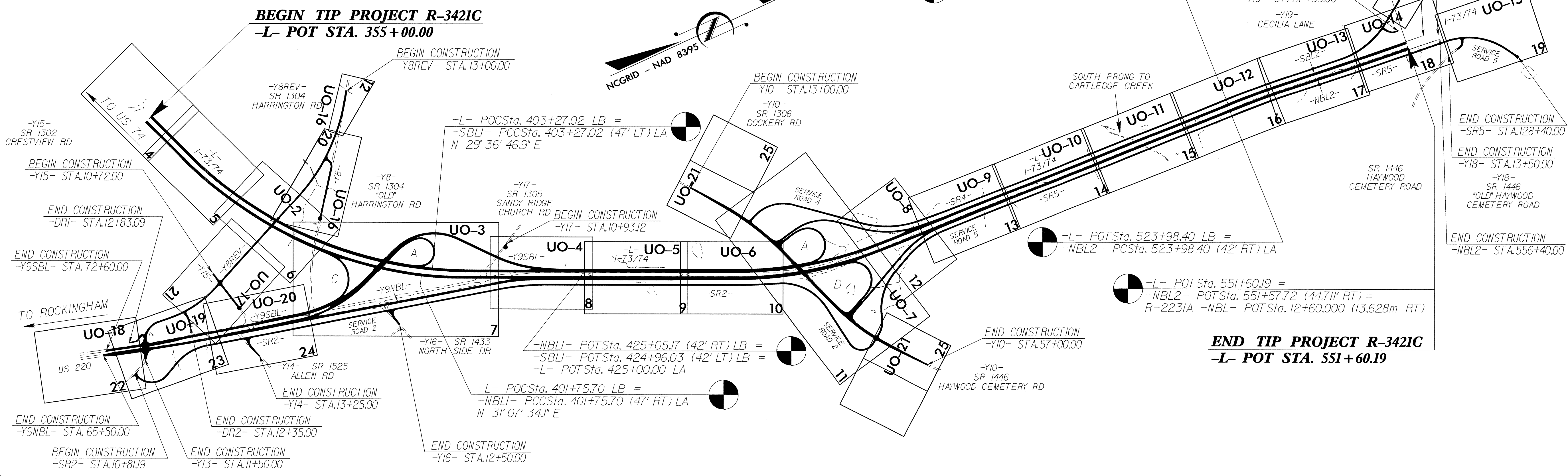
**UTILITIES BY OTHERS PLANS  
RICHMOND COUNTY**

**LOCATION: US 220 BYPASS FROM 0.2 MILES SOUTHWEST OF  
SR 1304 (HARRINGTON RD) TO US 220 BUSINESS/BYPASS  
INTERCHANGE SOUTH OF ELLERBE**

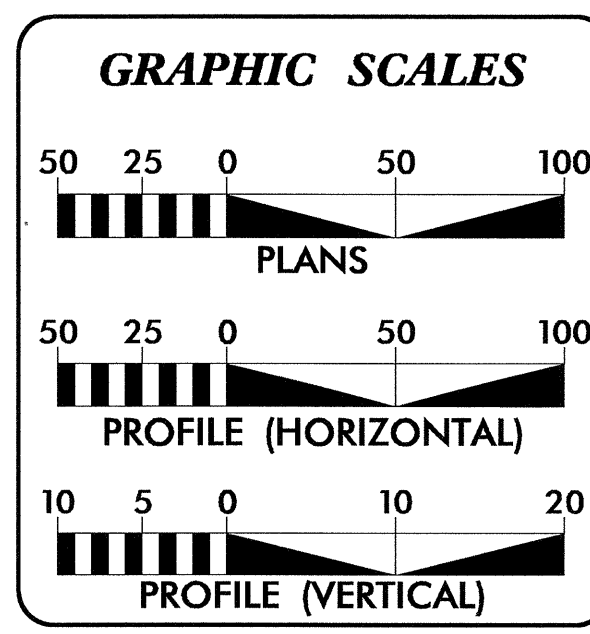
**TYPE OF WORK: UTILITILY WORK BY OTHERS**



VICINITY MAP



**TIP PROJECT: R-3421C**



**INDEX OF SHEETS**

SHEET NO.	DESCRIPTION
UO-1	TITLE SHEET
UO-2 THRU UO-22	UTILITY BY OTHERS PLAN SHEETS

**UTILITY OWNERS ON PROJECT**

(A) PROGRESS ENERGY (TRANSMISSION) - POWER  
 (B) PROGRESS ENERGY (DISTRIBUTION) - POWER  
 (C) PEE DEE ELECTRIC - POWER  
 (D) ELLERBE TELEPHONE COMPANY - TELEPHONE  
 (E) AT&T EAST - TELEPHONE  
 (F) TIME WARNER CABLE - CATV  
 (G) RICHMOND COUNTY - WATER  
 (H) TOWN OF ELLERBE - SANITARY SEWER

PREPARED IN THE OFFICE OF:  
**DIVISION OF HIGHWAYS  
 UTILITIES UNIT  
 UTILITIES ENGINEERING**

1591 MAIL SERVICES CENTER  
 RALEIGH NC 27699-1591  
 PHONE (919) 707-6690  
 FAX (919) 250-4151

**Roger Worthington, P.E.** UTILITIES SECTION ENGINEER  
**Steve McKee, P.E.** UTILITIES SQUAD LEADER PROJECT ENGINEER  
**Keely Lane** UTILITIES PROJECT DESIGNER

06-AUG-2012 10:58  
 R:\UH\it\res\rdy\_uh\Pro\NR3421C\_U0-Title\_U01.psh.dgn  
 \$\$\$USERNAME\$\$\$

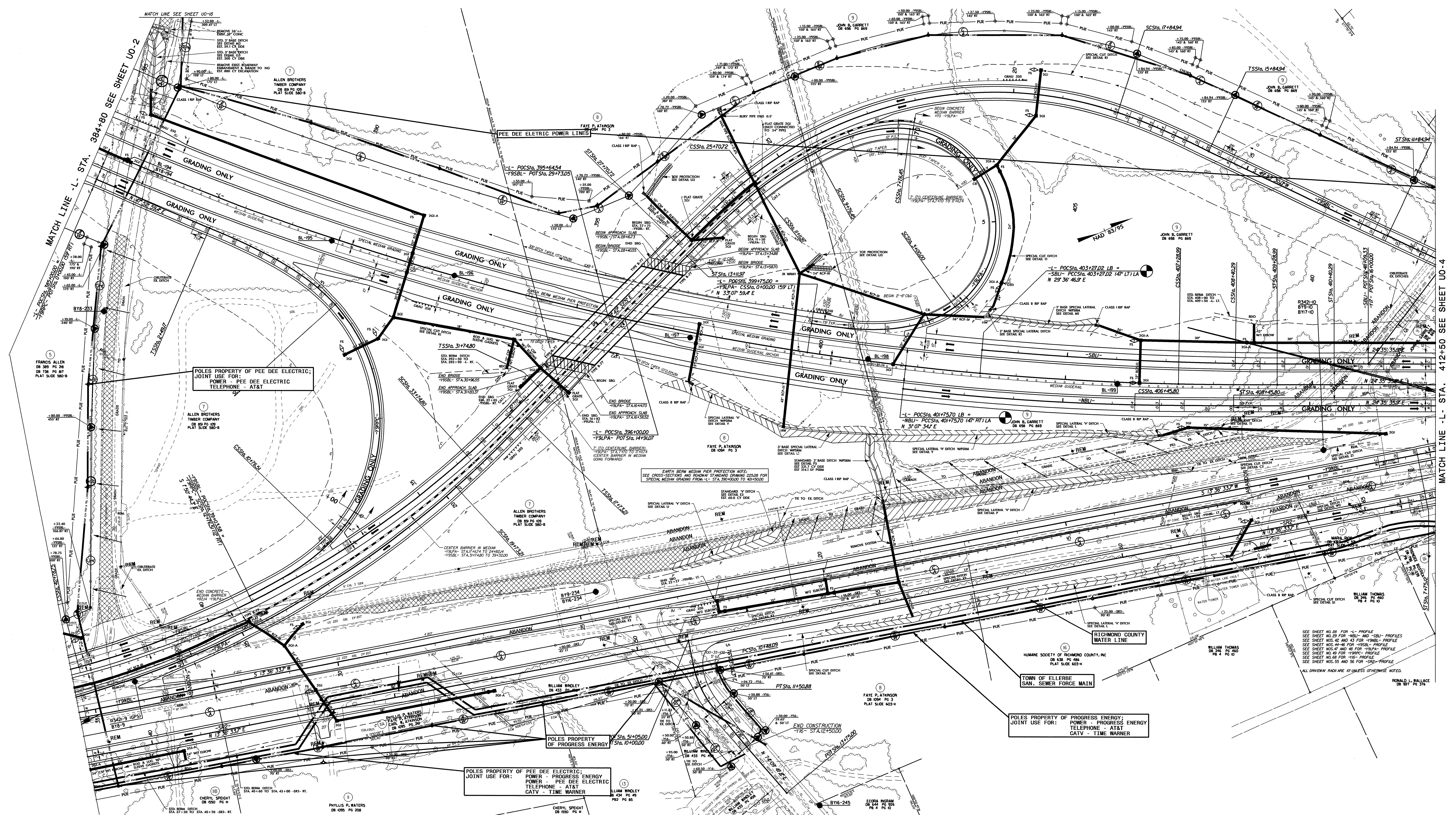






# UTILITIES BY OTHERS

**NOTE:**  
ALL PROPOSED UTILITY WORK SHOWN ON THIS SHEET WILL BE DONE BY OTHERS



POLES PROPERTY OF PEE DEE ELECTRIC;  
JOINT USE FOR:  
POWER - PEE DEE ELECTRIC  
TELEPHONE - AT&T

POLES PROPERTY OF PROGRESS ENERGY;  
JOINT USE FOR:  
POWER - PROGRESS ENERGY  
TELEPHONE - AT&T  
CATV - TIME WARNER

POLES PROPERTY OF PEE DEE ELECTRIC;  
JOINT USE FOR:  
POWER - PROGRESS ENERGY  
POWER - PEE DEE ELECTRIC  
TELEPHONE - AT&T  
CATV - TIME WARNER

SEE SHEET NO. 08 FOR "L" PROFILE  
SEE SHEET NO. 09 FOR "M" AND "S" PROFILES  
SEE SHEET NOS. 46 AND 43 FOR "S" PROFILE  
SEE SHEET NOS. 47 AND 45 FOR "P" PROFILE  
SEE SHEET NOS. 48 AND 44 FOR "P" PROFILE  
SEE SHEET NOS. 49 FOR "P" PROFILE  
SEE SHEET NOS. 50 FOR "P" PROFILE  
SEE SHEET NOS. 51 FOR "P" PROFILE  
SEE SHEET NOS. 52 FOR "P" PROFILE  
SEE SHEET NOS. 53 FOR "P" PROFILE  
SEE SHEET NOS. 54 FOR "P" PROFILE  
SEE SHEET NOS. 55 AND 56 FOR "S" PROFILE  
ALL DIMENSIONS ARE IN FEET UNLESS OTHERWISE NOTED.

5/14/99

06-AUG-2012 10:01  
R:\1110es\PROJECTS\UO-1\PROJECT\NR3421C\_Ut\_07\_UO3\_psh.dgn  
R:\1110es\PROJECTS\UO-1\PROJECT\NR3421C\_Ut\_07\_UO3\_psh.dgn

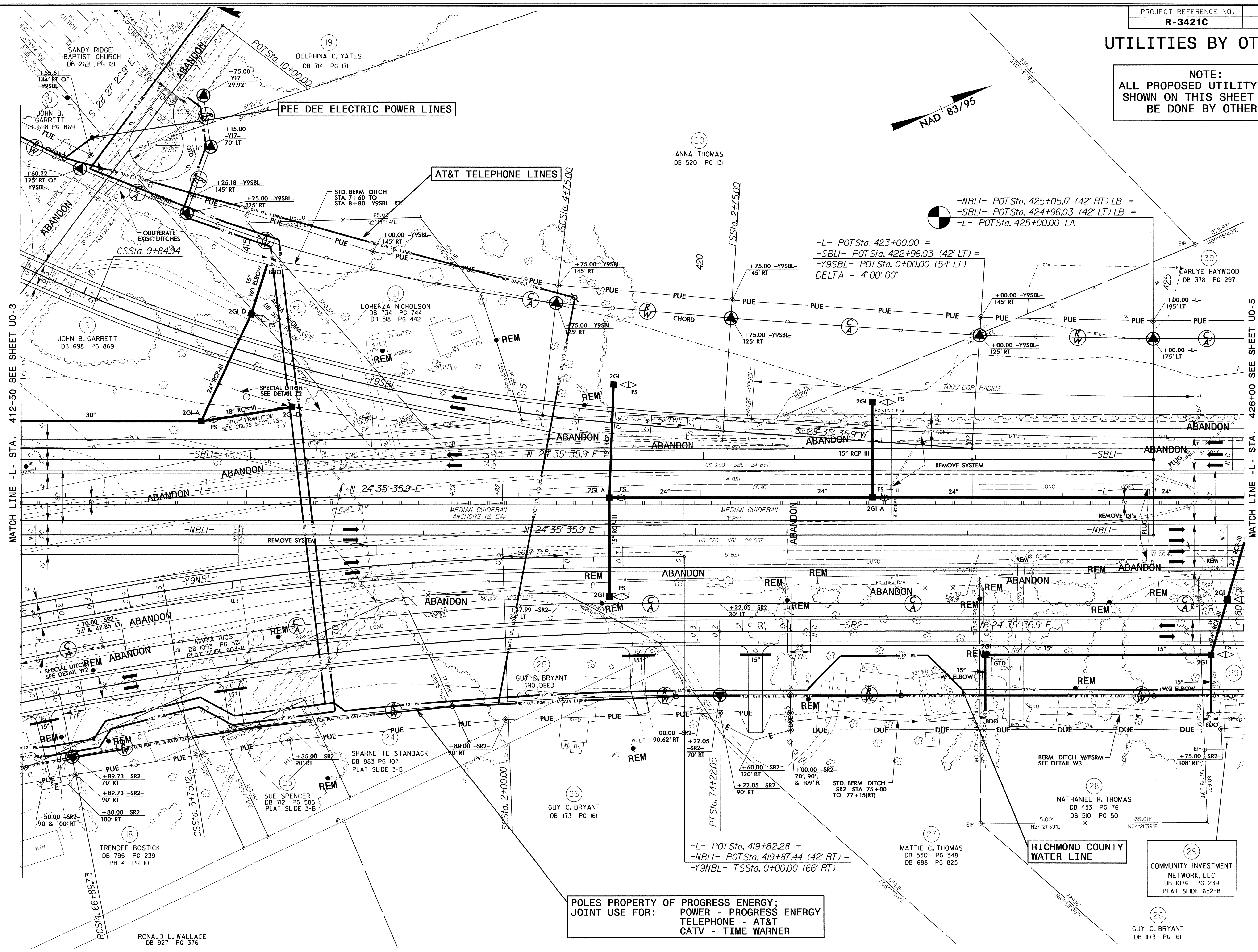
MATCH LINE - L. STA. 412+50 SEE SHEET UO-4

MATCH LINE - L. STA. 384+80 SEE SHEET UO-2



UTILITIES BY OTHERS

NOTE:  
ALL PROPOSED UTILITY WORK  
SHOWN ON THIS SHEET WILL  
BE DONE BY OTHERS



-NBLI- POTSta. 425+05.17 (42' RT) LB =  
-SBLI- POTSta. 424+96.03 (42' LT) LB =  
-L- POTSta. 425+00.00 LA

-L- POTSta. 423+00.00 =  
-SBLI- POTSta. 422+96.03 (42' LT) =  
-Y9SBL- POTSta. 0+00.00 (54' LT)  
DELTA = 4' 00" 00"

-L- POTSta. 419+82.28 =  
-NBLI- POTSta. 419+87.44 (42' RT) =  
-Y9NBL- TSSSta. 0+00.00 (66' RT)

POLES PROPERTY OF PROGRESS ENERGY;  
JOINT USE FOR:  
POWER - PROGRESS ENERGY  
TELEPHONE - AT&T  
CATV - TIME WARNER

29  
COMMUNITY INVESTMENT  
NETWORK, LLC  
DB 1076 PG 239  
PLAT SLIDE 652-B

26  
GUY C. BRYANT  
DB 1173 PG 161

MATCH LINE - L - STA. 412+50 SEE SHEET UO-3

MATCH LINE - L - STA. 426+00 SEE SHEET UO-5

5/14/99

06-AUG-2012 10:04  
R:\3421C\UO-4\UO-4.dgn

RONALD L. WALLACE  
DB 927 PG 376





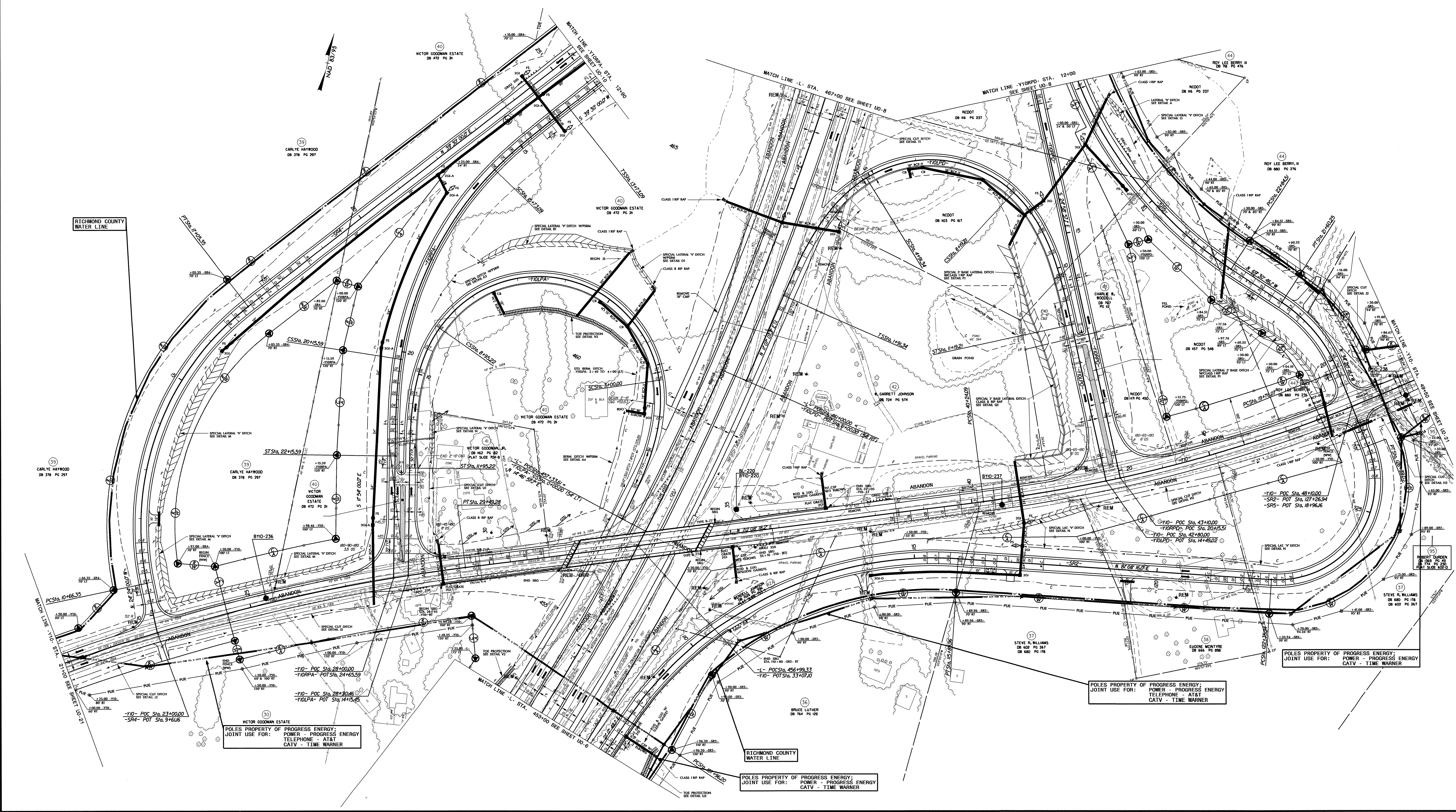






# UTILITIES BY OTHERS

**NOTE:**  
ALL PROPOSED UTILITY WORK  
SHOWN ON THIS SHEET WILL  
BE DONE BY OTHERS



POLES PROPERTY OF PROGRESS ENERGY;  
JOINT USE FOR: POWER - PROGRESS ENERGY  
TELEPHONE - AT&T  
CATV - TIME WARNER

POLES PROPERTY OF PROGRESS ENERGY;  
JOINT USE FOR: POWER - PROGRESS ENERGY  
TELEPHONE - AT&T  
CATV - TIME WARNER

POLES PROPERTY OF PROGRESS ENERGY;  
JOINT USE FOR: POWER - PROGRESS ENERGY  
CATV - TIME WARNER

POLES PROPERTY OF PROGRESS ENERGY;  
JOINT USE FOR: POWER - PROGRESS ENERGY  
CATV - TIME WARNER

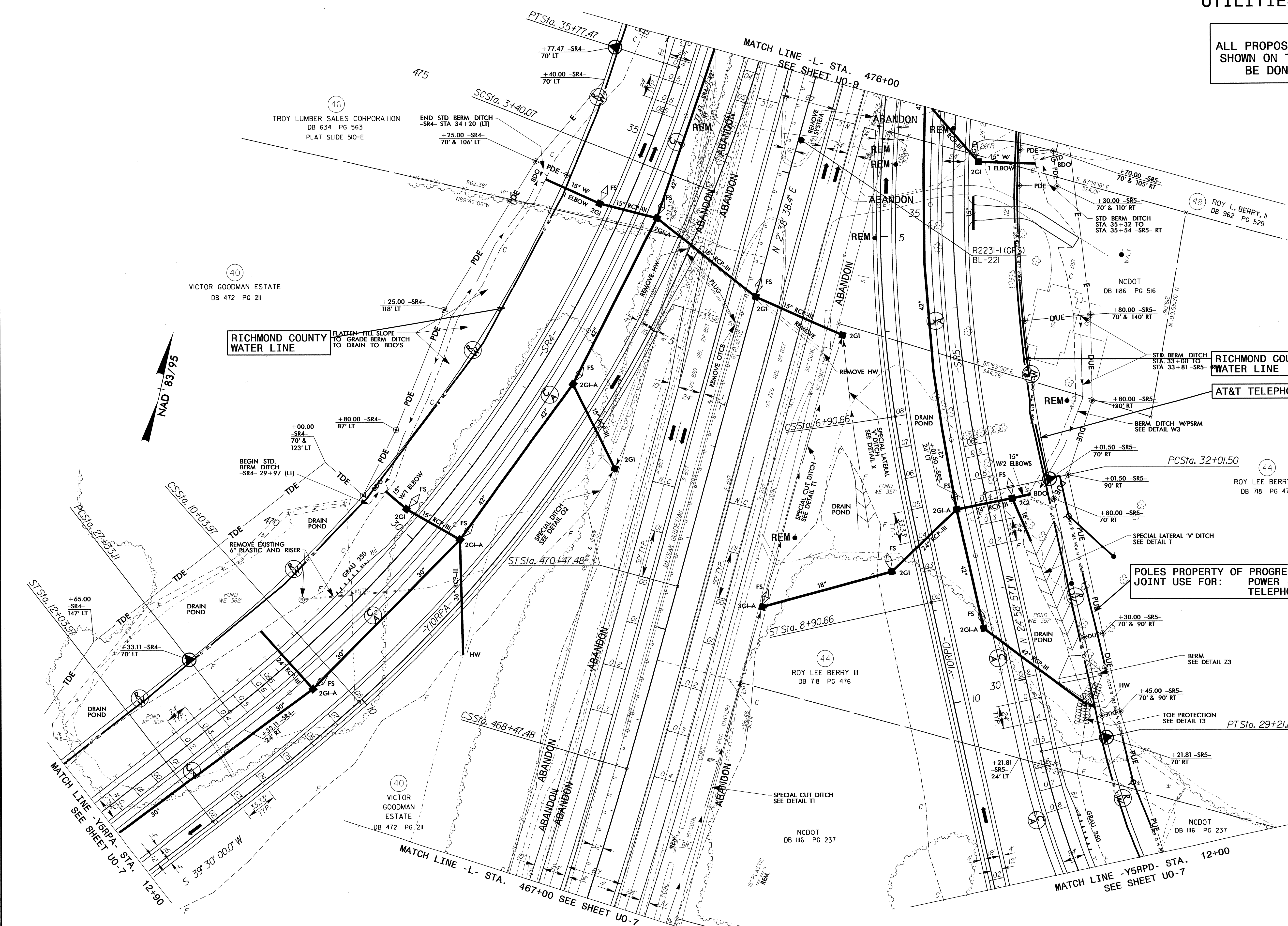
5/14/99

06-AUG-2012 14:07  
R:\Utilities\Projects\R3421C\Uo-7\UO7\_psh.dgn



# UTILITIES BY OTHERS

NOTE:  
ALL PROPOSED UTILITY WORK  
SHOWN ON THIS SHEET WILL  
BE DONE BY OTHERS



**RICHMOND COUNTY WATER LINE**

**RICHMOND COUNTY WATER LINE**

**AT&T TELEPHONE LINES**

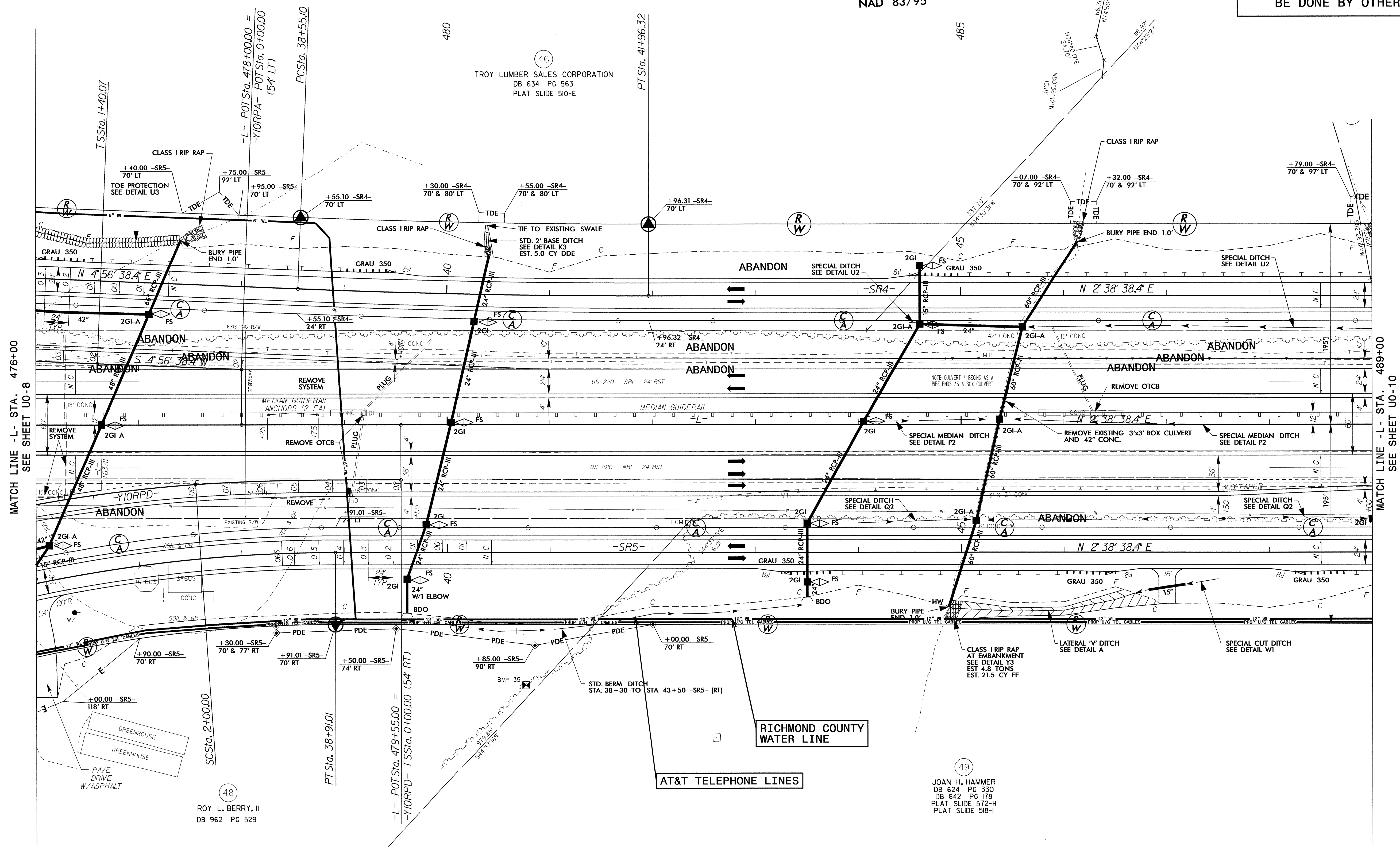
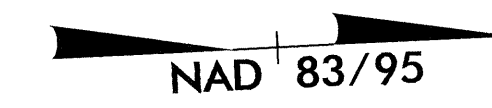
**POLES PROPERTY OF PROGRESS ENERGY;  
JOINT USE FOR:  
POWER - PROGRESS ENERGY  
TELEPHONE - AT&T**

5/14/99  
 06-AUG-2012 11:10  
 R:\Utilities\Projects\3421C\_Ut\_12\_U08\_psh.dgn  
 3421C\_U08.dwg  
 3421C\_U08.dwg



UTILITIES BY OTHERS

NOTE:  
ALL PROPOSED UTILITY WORK  
SHOWN ON THIS SHEET WILL  
BE DONE BY OTHERS



MATCH LINE - L- STA. 476+00  
SEE SHEET UO-8

MATCH LINE - L- STA. 489+00  
SEE SHEET UO-10

480  
TROY LUMBER SALES CORPORATION  
DB 634 PG 563  
PLAT SLIDE 510-E

48  
ROY L. BERRY, II  
DB 962 PG 529

RICHMOND COUNTY  
WATER LINE

AT&T TELEPHONE LINES

49  
JOAN H. HAMMER  
DB 624 PG 330  
DB 642 PG 178  
PLAT SLIDE 572-H  
PLAT SLIDE 518-I

5/14/99

06-AUG-2012 10:10  
R:\U01\Utilities\Projects\Proj\_R3421C\_U0-13\_U09\_psh.dgn

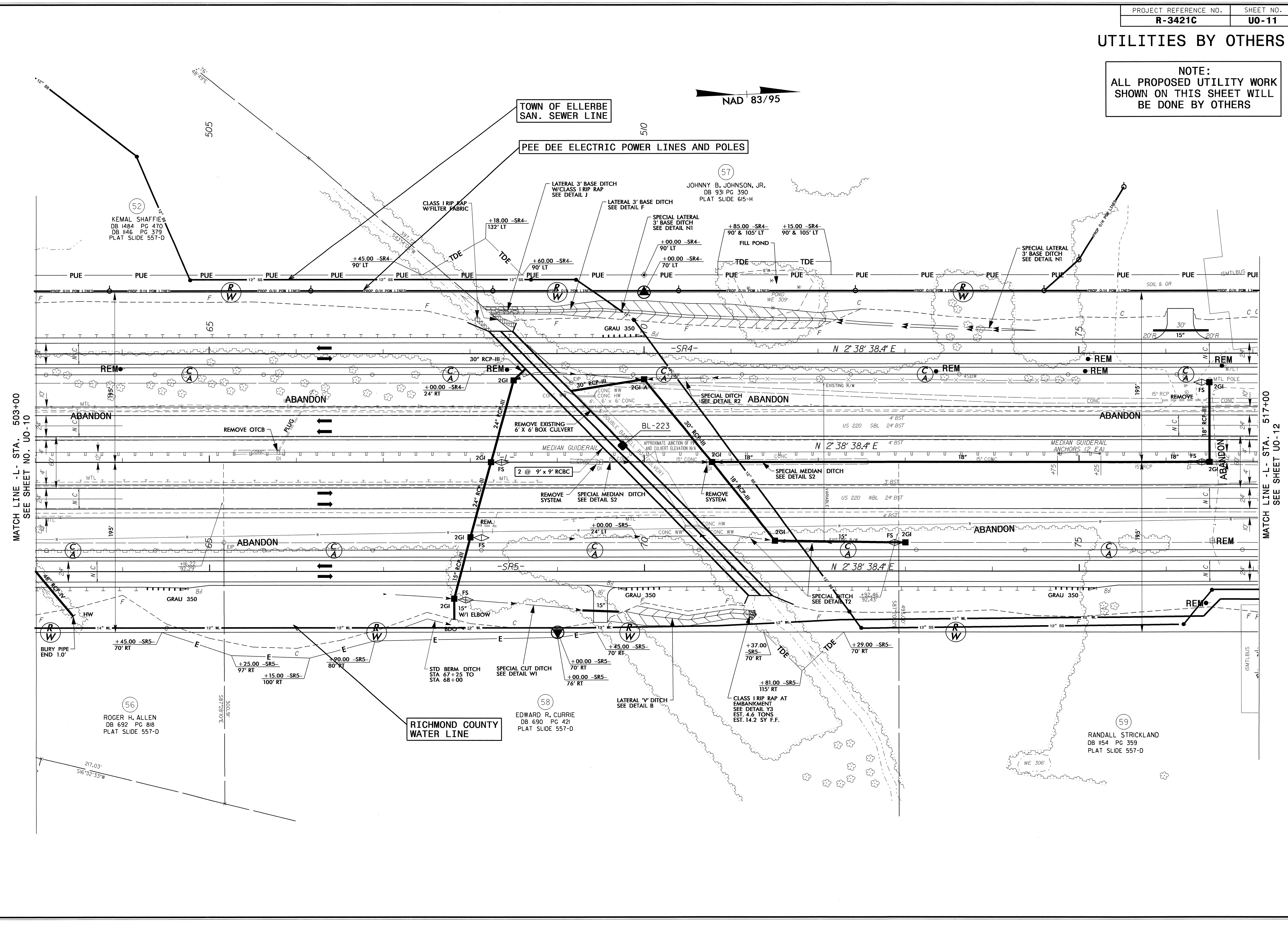
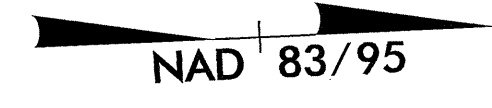






UTILITIES BY OTHERS

NOTE:  
ALL PROPOSED UTILITY WORK  
SHOWN ON THIS SHEET WILL  
BE DONE BY OTHERS



MATCH LINE - L- STA. 503+00  
SEE SHEET NO. UO-10

MATCH LINE - L- STA. 517+00  
SEE SHEET UO-12

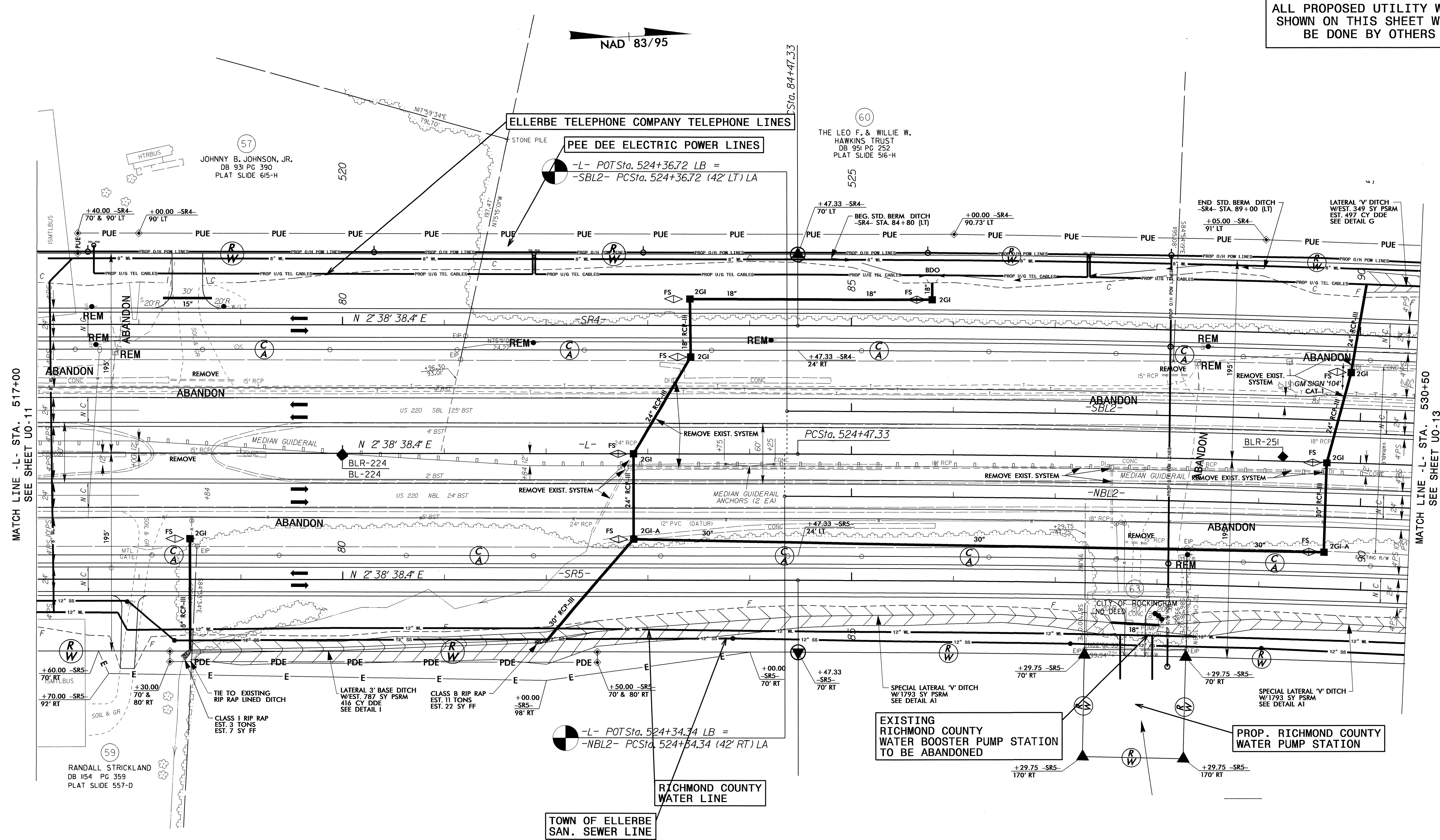
5/14/99  
06-AUG-2012 14:5  
R:\Utilities\Projects\NR3421C-U-15-U011\_psh.dgn



UTILITIES BY OTHERS

NOTE:  
ALL PROPOSED UTILITY WORK  
SHOWN ON THIS SHEET WILL  
BE DONE BY OTHERS

NAD 83/95



MATCH LINE - L - STA. 517+00  
SEE SHEET U0-11

MATCH LINE - L - STA. 530+50  
SEE SHEET U0-13

5/14/99  
21-FEB-2005 15:08 \\P3421C\_Ut\_16\_U012.psh.dgn













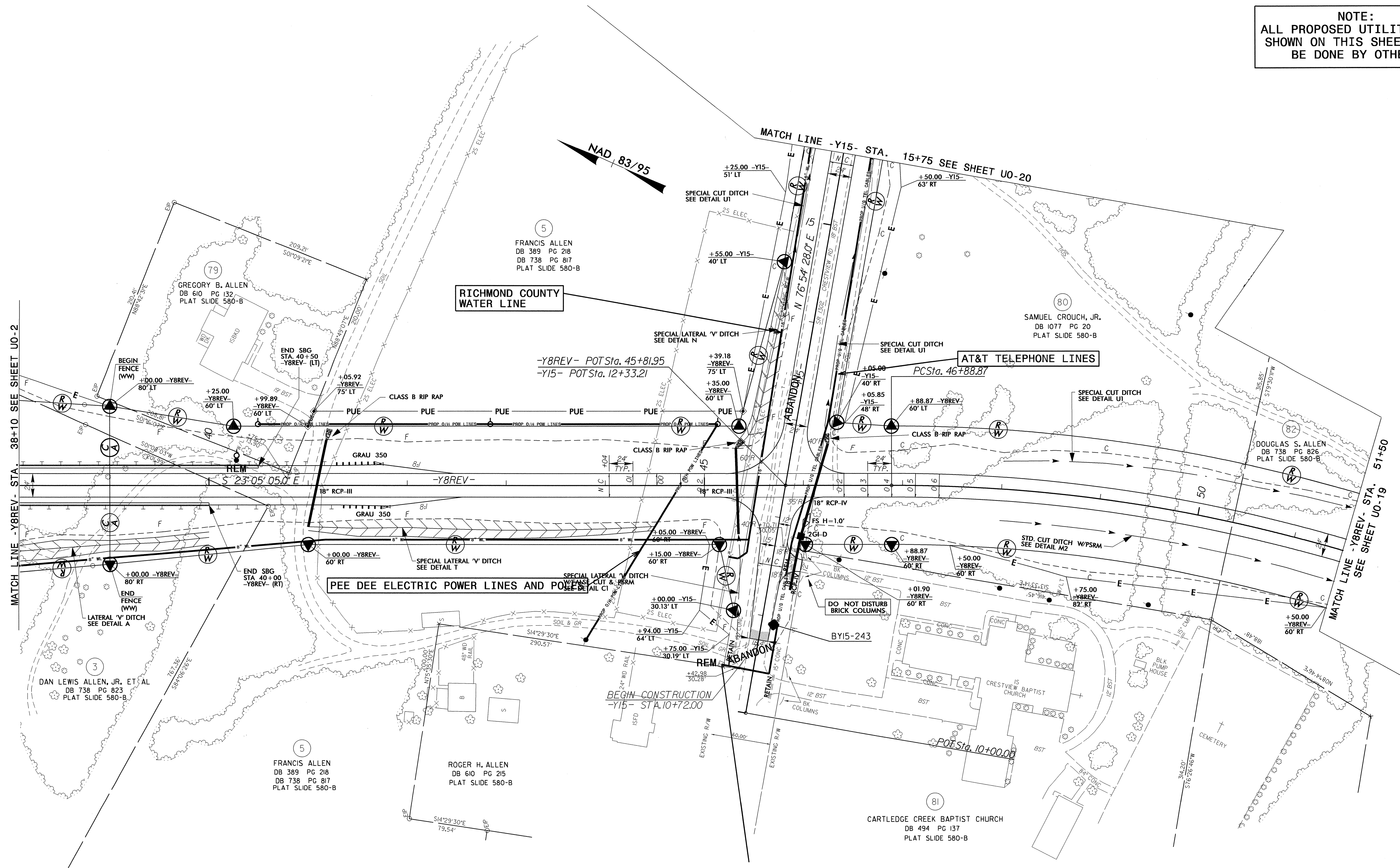






UTILITIES BY OTHERS

NOTE:  
ALL PROPOSED UTILITY WORK  
SHOWN ON THIS SHEET WILL  
BE DONE BY OTHERS



5/14/99  
06-AUG-2012 14:24  
R:\Utilities\PEE DEE\U0-17\U017\_psh.dgn



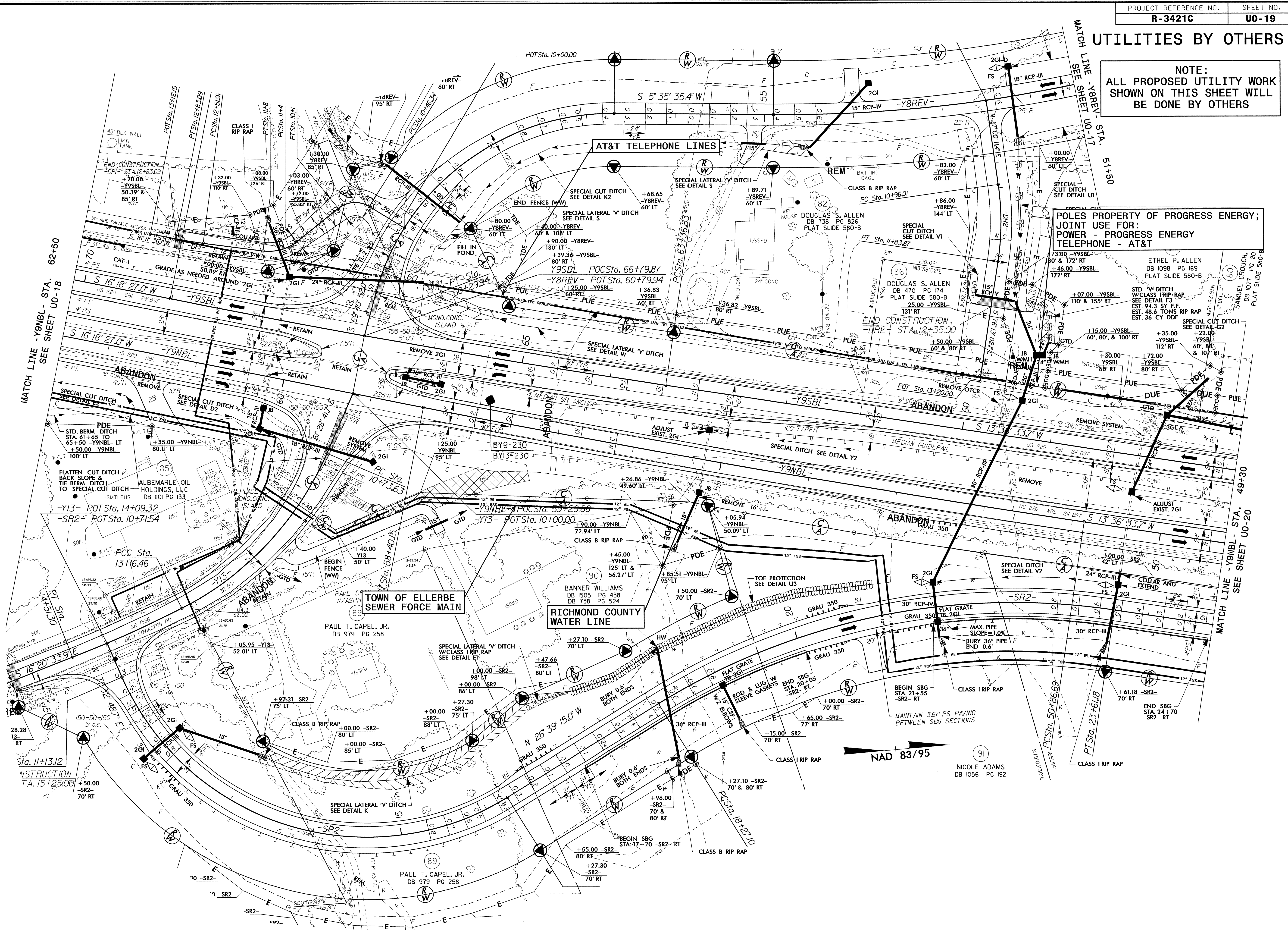




# UTILITIES BY OTHERS

NOTE:  
ALL PROPOSED UTILITY WORK  
SHOWN ON THIS SHEET WILL  
BE DONE BY OTHERS

POLES PROPERTY OF PROGRESS ENERGY;  
JOINT USE FOR:  
POWER - PROGRESS ENERGY  
TELEPHONE - AT&T



MATCH LINE - Y9NBL - STA. 62+50  
SEE SHEET UO-18

MATCH LINE - Y8REV - STA. 51+50  
SEE SHEET UO-17

MATCH LINE - Y9NBL - STA. 49+30  
SEE SHEET UO-20

NAD 83/95

06-AUG-2012 11:28  
U:\Utilities\Projects\193421C\_Ut\_23\_UO19\_psh.dgn  
5/14/19

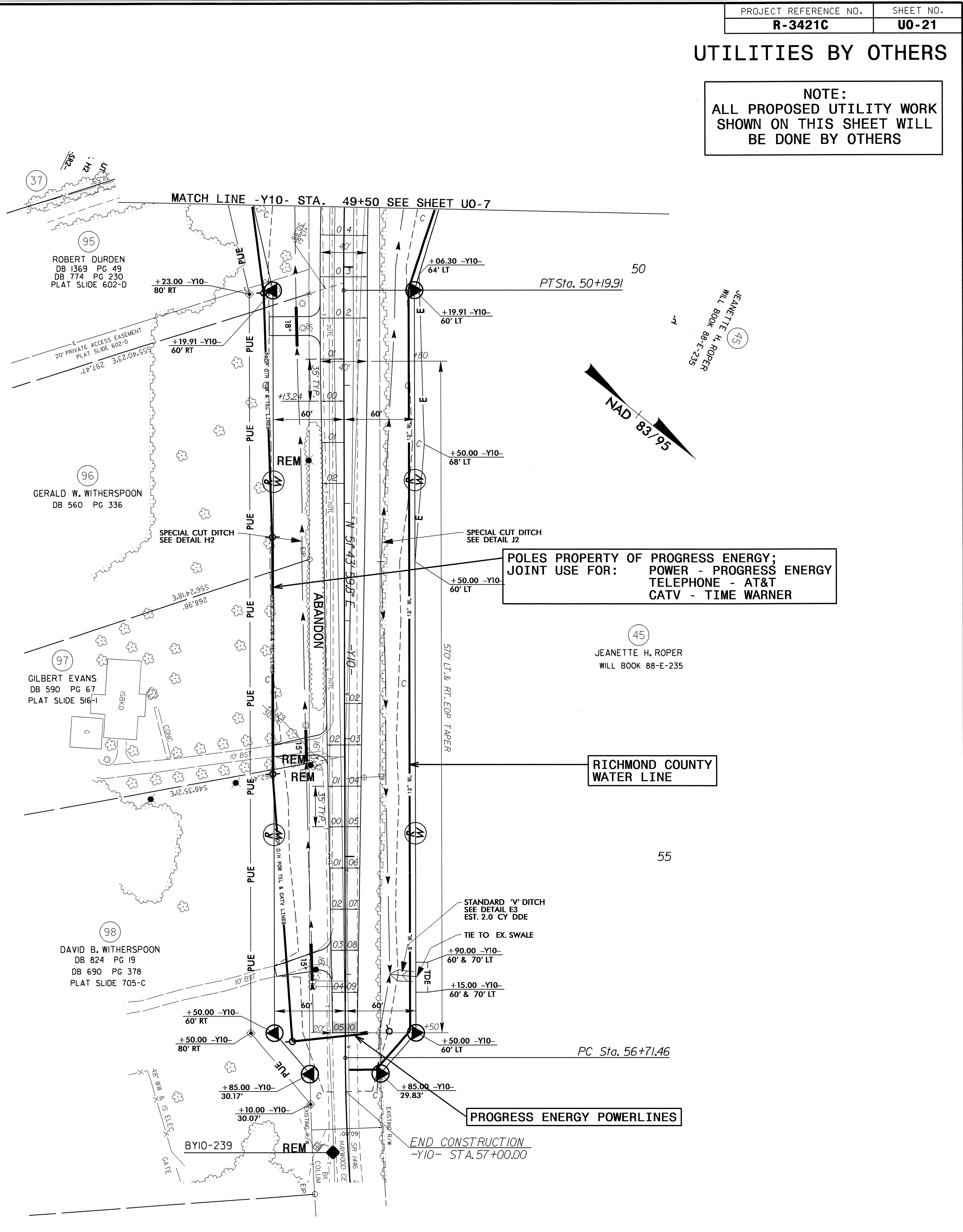
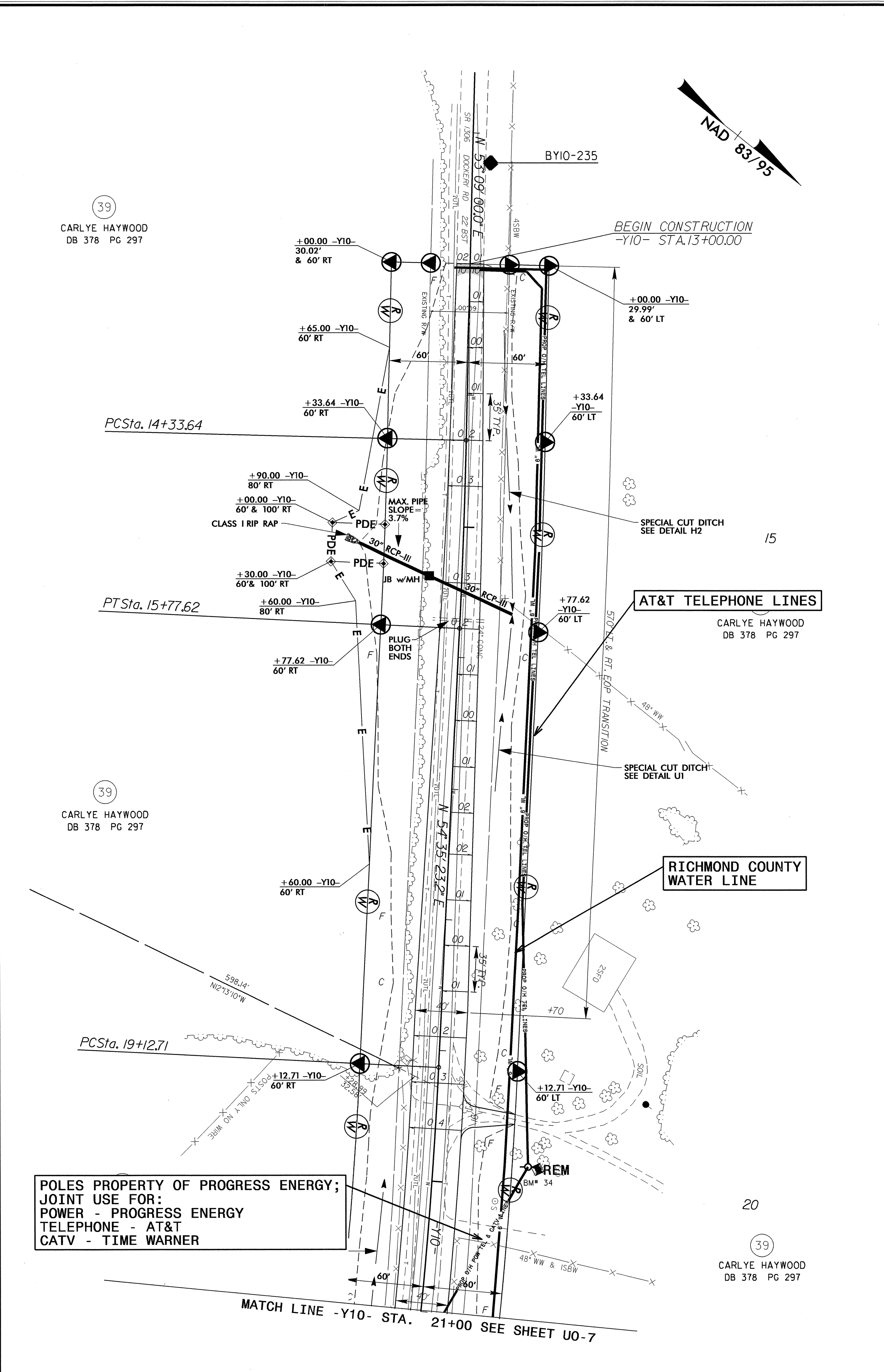






UTILITIES BY OTHERS

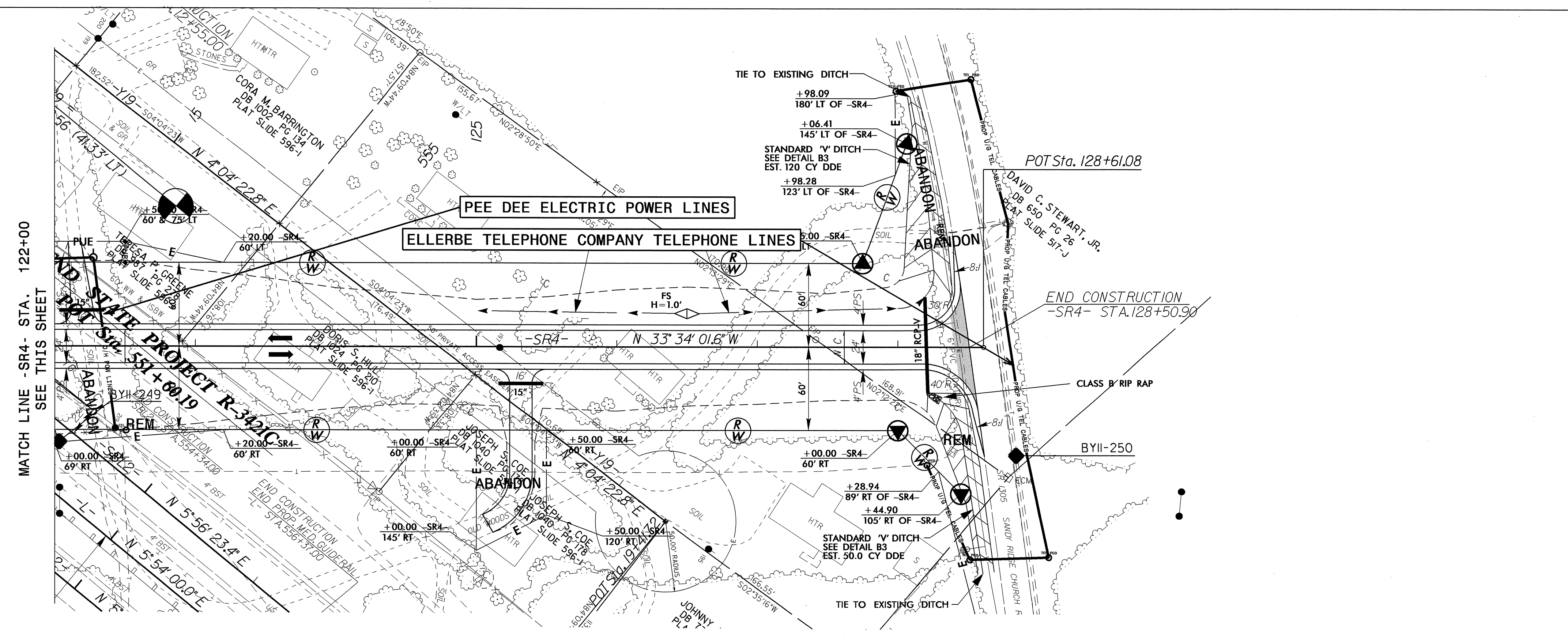
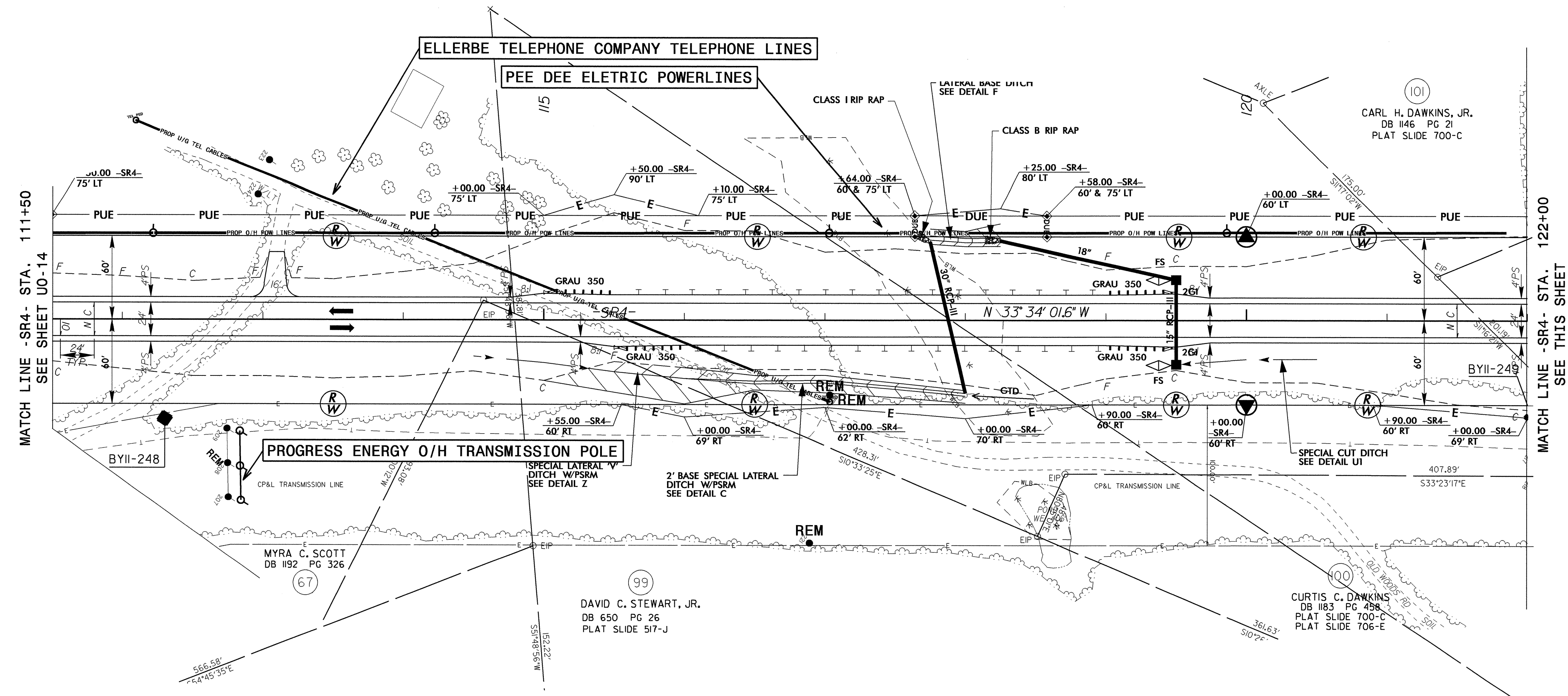
NOTE:  
ALL PROPOSED UTILITY WORK  
SHOWN ON THIS SHEET WILL  
BE DONE BY OTHERS





### UTILITIES BY OTHERS

NOTE:  
ALL PROPOSED UTILITY WORK  
SHOWN ON THIS SHEET WILL  
BE DONE BY OTHERS



5/14/99

06-AUG-2012 11:48 R3421C-Ut\_26U022.psh.dgn