

05/08/99

TIP PROJECT: R-3307

T.I.P. NO.	SHEET NO.
R-3307	UO-1

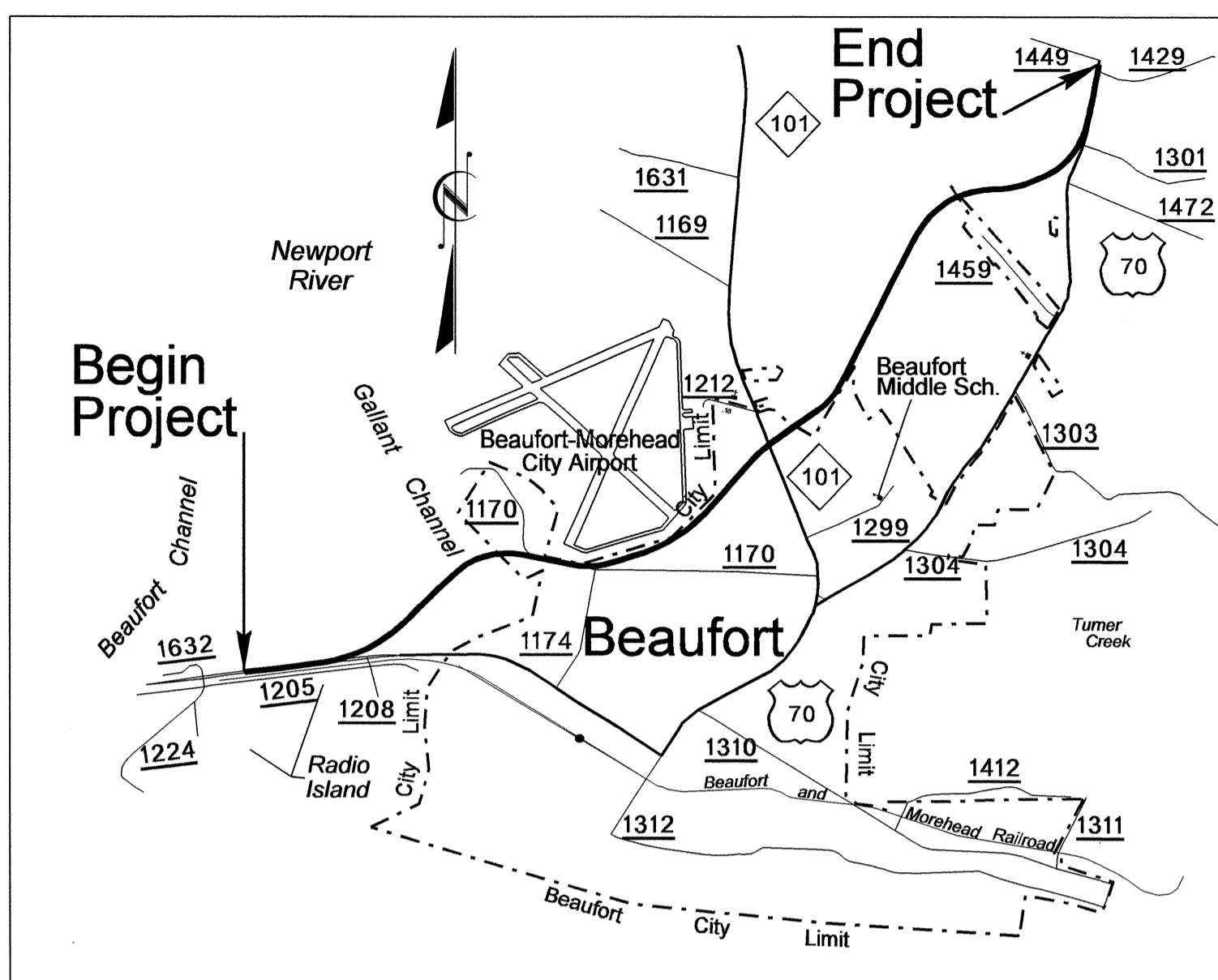
STATE OF NORTH CAROLINA  
DIVISION OF HIGHWAYS

**UTILITIES BY OTHERS PLANS  
CARTERET COUNTY**

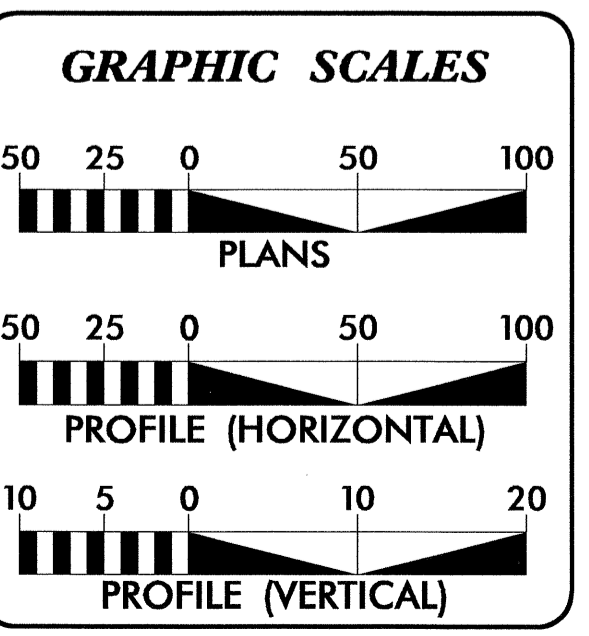
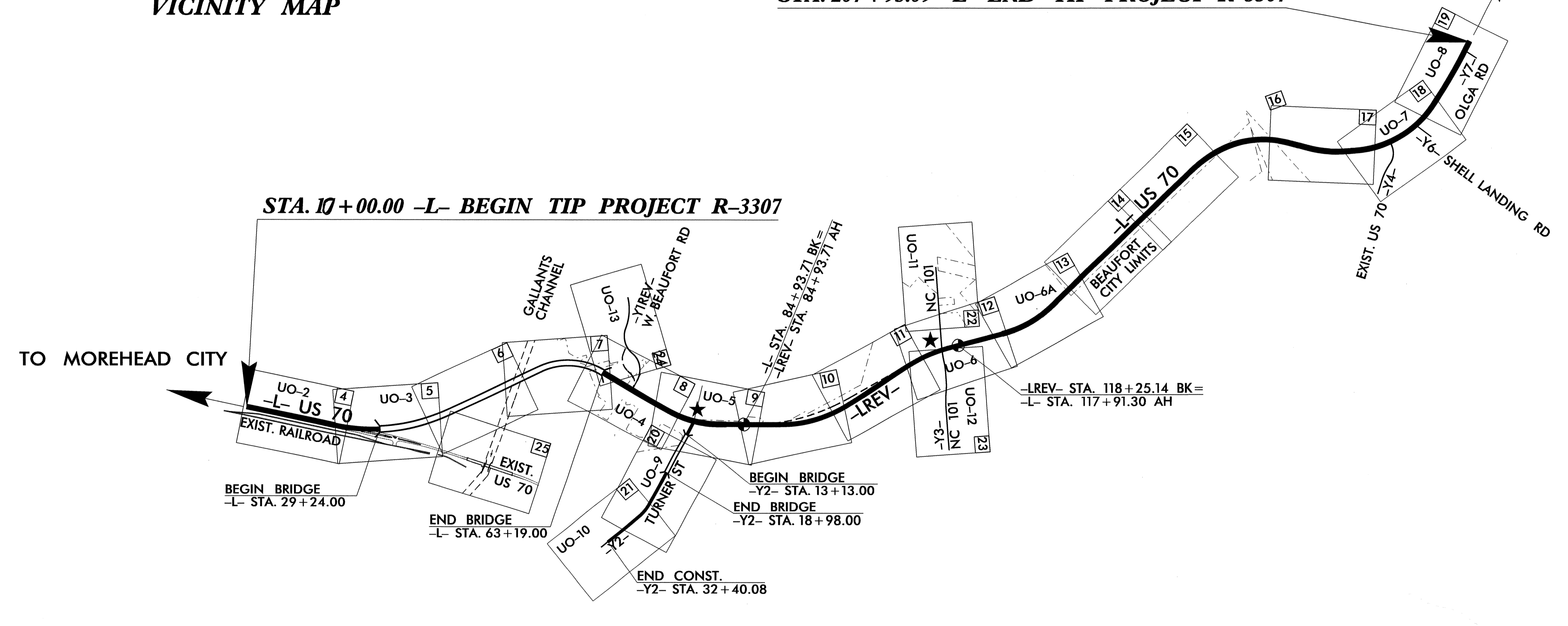
LOCATION: US 70 FROM EXISTING FOUR LANES AT  
RADIO ISLAND TO US 70 NORTH OF  
SR 1429 (OLGA ROAD)

TYPE OF WORK: RELOCATE OF UTILITY LINES

STA. 207+95.09 -L- END TIP PROJECT R-3307



VICINITY MAP



**INDEX OF SHEETS**

SHEET NO.	DESCRIPTION
UO-1	TITLE SHEET
UO-2 THRU UO-13	UTILITY BY OTHERS PLAN SHEETS

- UTILITY OWNERS ON PROJECT**
- (1) CENTURY LINK - TELEPHONE
  - (2) PROGRESS ENERGY CAROLINAS, INC. - (DISTRIBUTION AND TRANSMISSION)
  - (3) TIME WARNER CABLES - CATV
  - (4) CARTERET CRAVEN EMC - POWER
  - (5) TOWN OF BEAUFORT - WATER & SEWER
  - (6) CARTERET CONTY - WATER

PREPARED IN THE OFFICE OF:  
**DIVISION OF HIGHWAYS  
UTILITIES ENGINEERING  
SECTION**

1591 MAIL SERVICES CENTER  
RALEIGH NC 27699-1591  
PHONE (919) 707-6690  
FAX (919) 250-4151

Roger Worthington, P.E. UTILITIES SECTION ENGINEER  
Gorey Bousquet, P.E. UTILITIES SQUAD LEADER PROJECT ENGINEER  
Kifah Kamil UTILITIES PROJECT DESIGNER

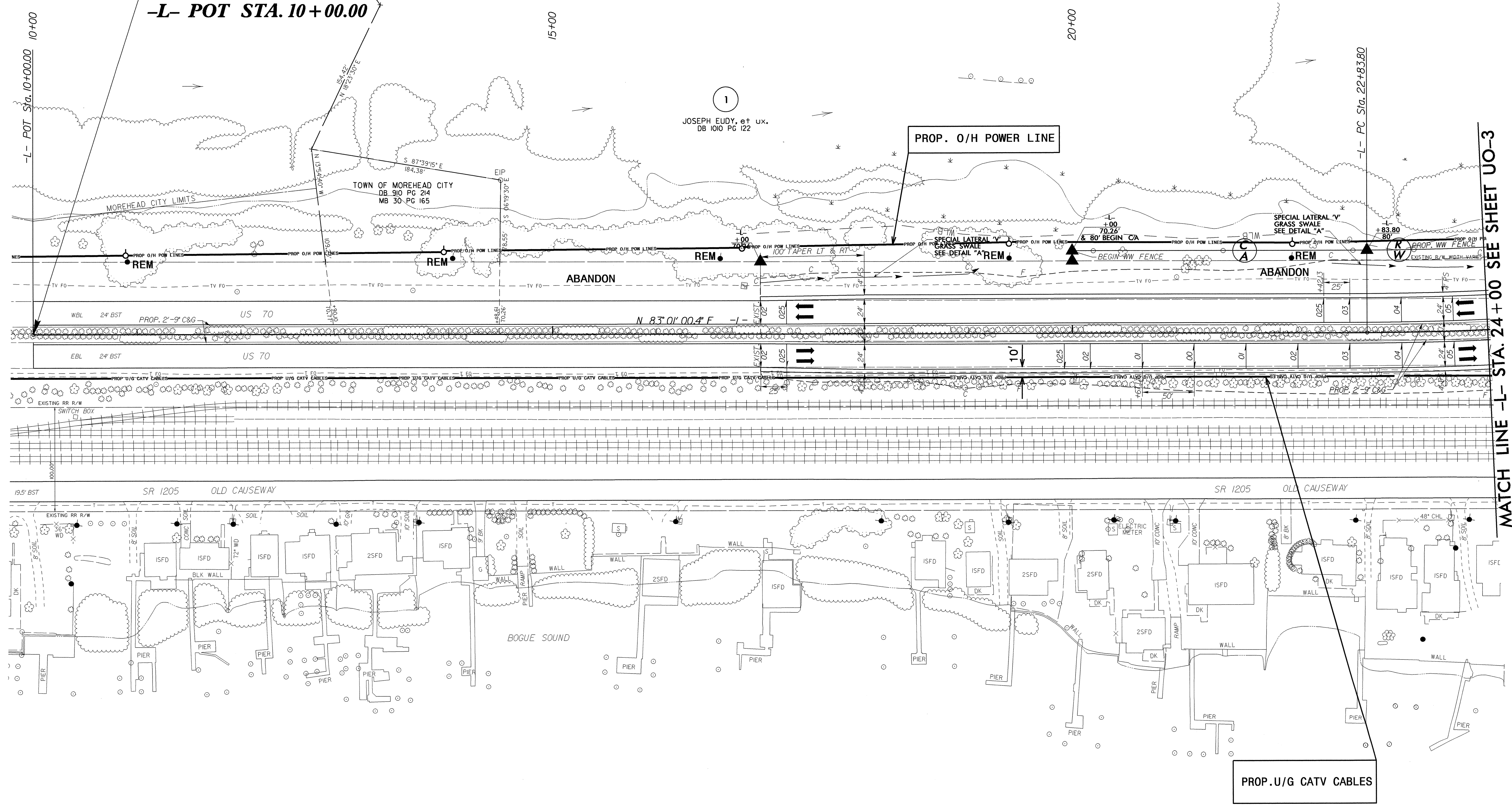
07-MAR-2012 12:35  
R:\UtilityFiles\RDY\_UT\Proj\vr3307\_UT\_U01.dgn  
\$\$\$\$\$USERNAME\$\$\$\$\$

### UTILITIES BY OTHERS

NOTE:  
ALL PROPOSED UTILITY WORK  
SHOWN ON THIS SHEET WILL  
BE DONE BY OTHERS

-L-  
PI Sta 31+49.36  
Δ = 36° 26' 02.2" (LT)  
D = 2° 10' 42.8"  
L = 1,672.40'  
T = 865.56'  
R = 2,630.00'  
SE = .05

**BEGIN TIP PROJECT R-3307**  
**-L- POT STA. 10+00.00**



PROP. U/G CATV CABLES

MATCH LINE -L- STA. 24+00 SEE SHEET UO-3

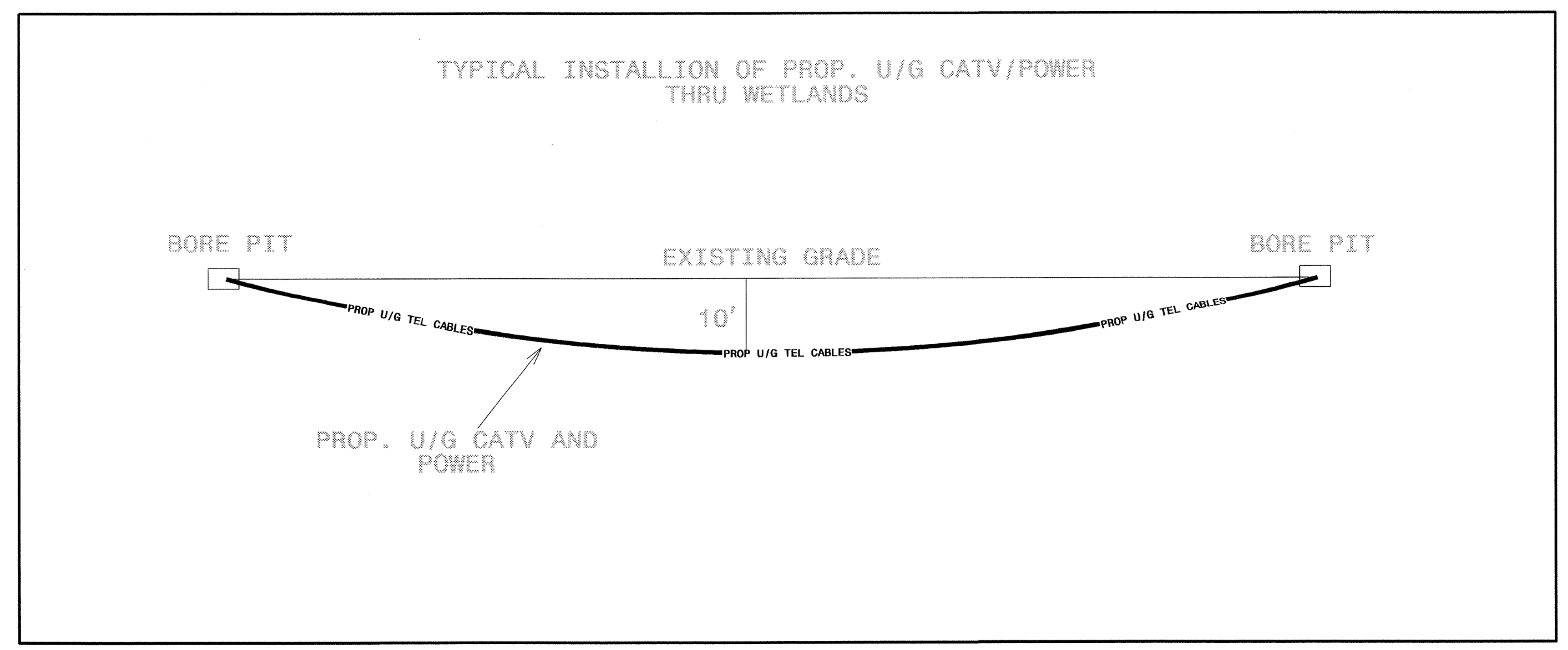
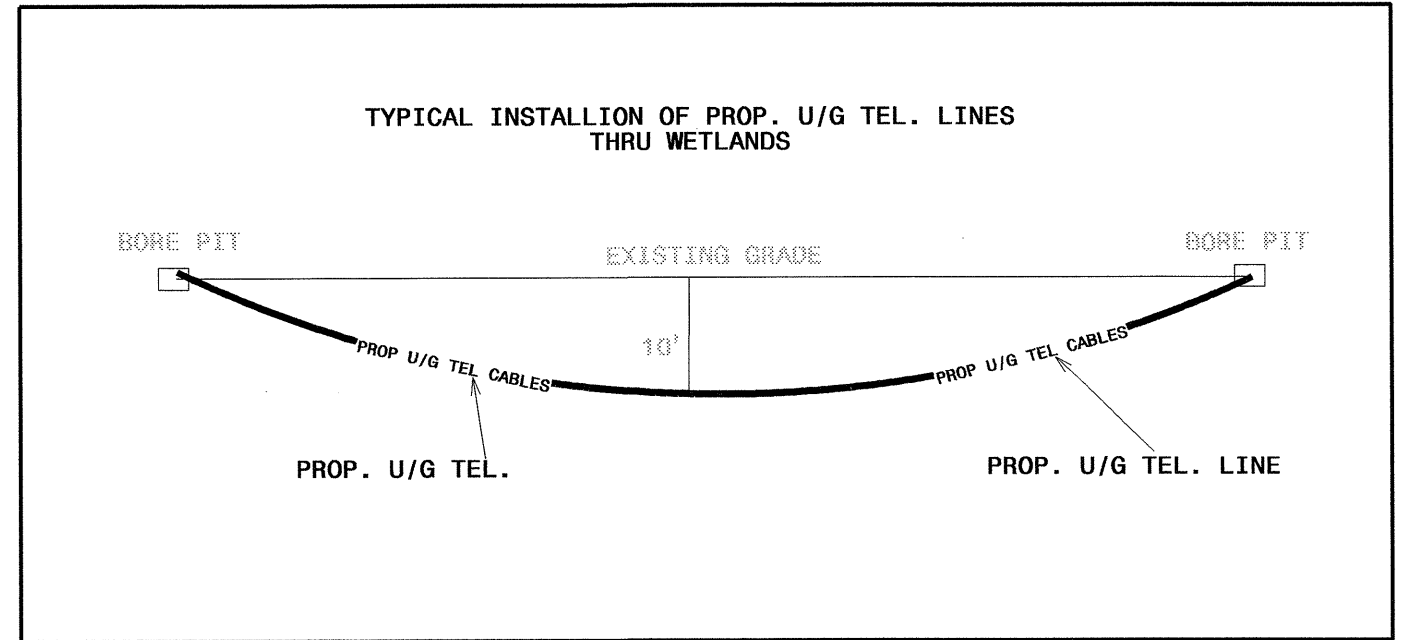
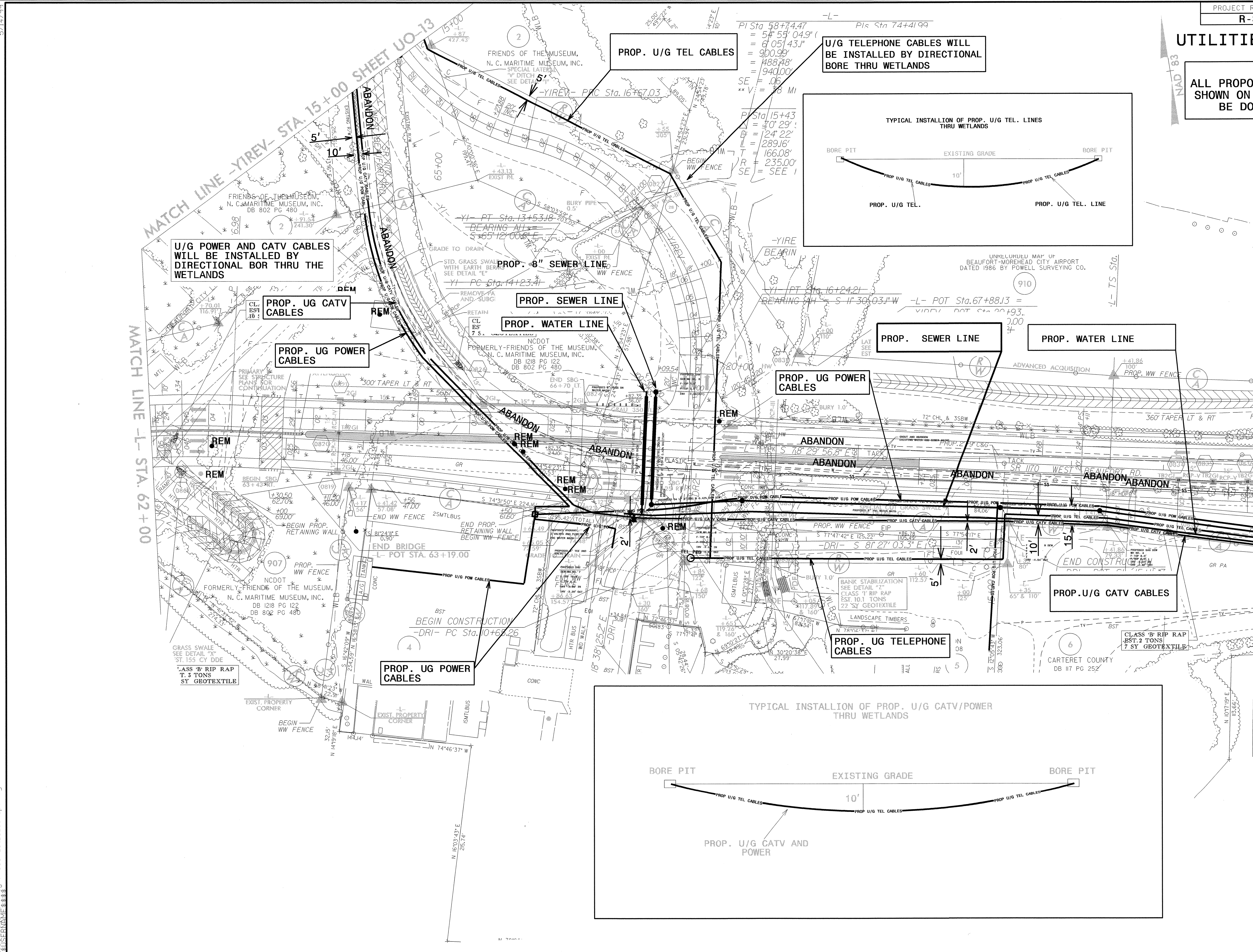
5/14/99

13-SEP-2012 10:08  
R:\Utilities\Projects\3307\ut\_4\_uo2\_psh.dgn



### UTILITIES BY OTHERS

NOTE:  
ALL PROPOSED UTILITY WORK  
SHOWN ON THIS SHEET WILL  
BE DONE BY OTHERS



U/G POWER AND CATV CABLES WILL BE INSTALLED BY DIRECTIONAL BOR THRU THE WETLANDS

U/G TELEPHONE CABLES WILL BE INSTALLED BY DIRECTIONAL BORE THRU WETLANDS

PROP. UG CATV CABLES

PROP. SEWER LINE

PROP. WATER LINE

PROP. UG POWER CABLES

PROP. SEWER LINE

PROP. WATER LINE

PROP. UG POWER CABLES

PROP. U/G CATV CABLES

PROP. UG POWER CABLES

PROP. UG TELEPHONE CABLES

MATCH LINE -L- STA. 62+00

MATCH LINE -YIREV- STA. 15+00 SHEET U0-13

MATCH LINE -L- STA. 74+00 SEE SHEET U0-5

5/14/99

R:\U0\U0-4\U0-4.dwg  
08-MAR-2002 09:37  
R-3307-ut.8-uo4\_psh.dwg

### UTILITIES BY OTHERS

**NOTE:**  
ALL PROPOSED UTILITY WORK SHOWN ON THIS SHEET WILL BE DONE BY OTHERS

Pls Sta 74+41.99  
 $\theta_s = 6' 21' 58.3''$   
 $L_s = 300.00'$   
 $LT = 200.13'$   
 $ST = 100.12'$

PI Sta 77+44.33  
 $\Delta = 17' 03' 32.8''$  (LT)  
 $D = 4' 14' 38.9''$   
 $L = 401.95'$   
 $T = 202.47'$   
 $R = 1,350.00'$   
 $SE = .04$

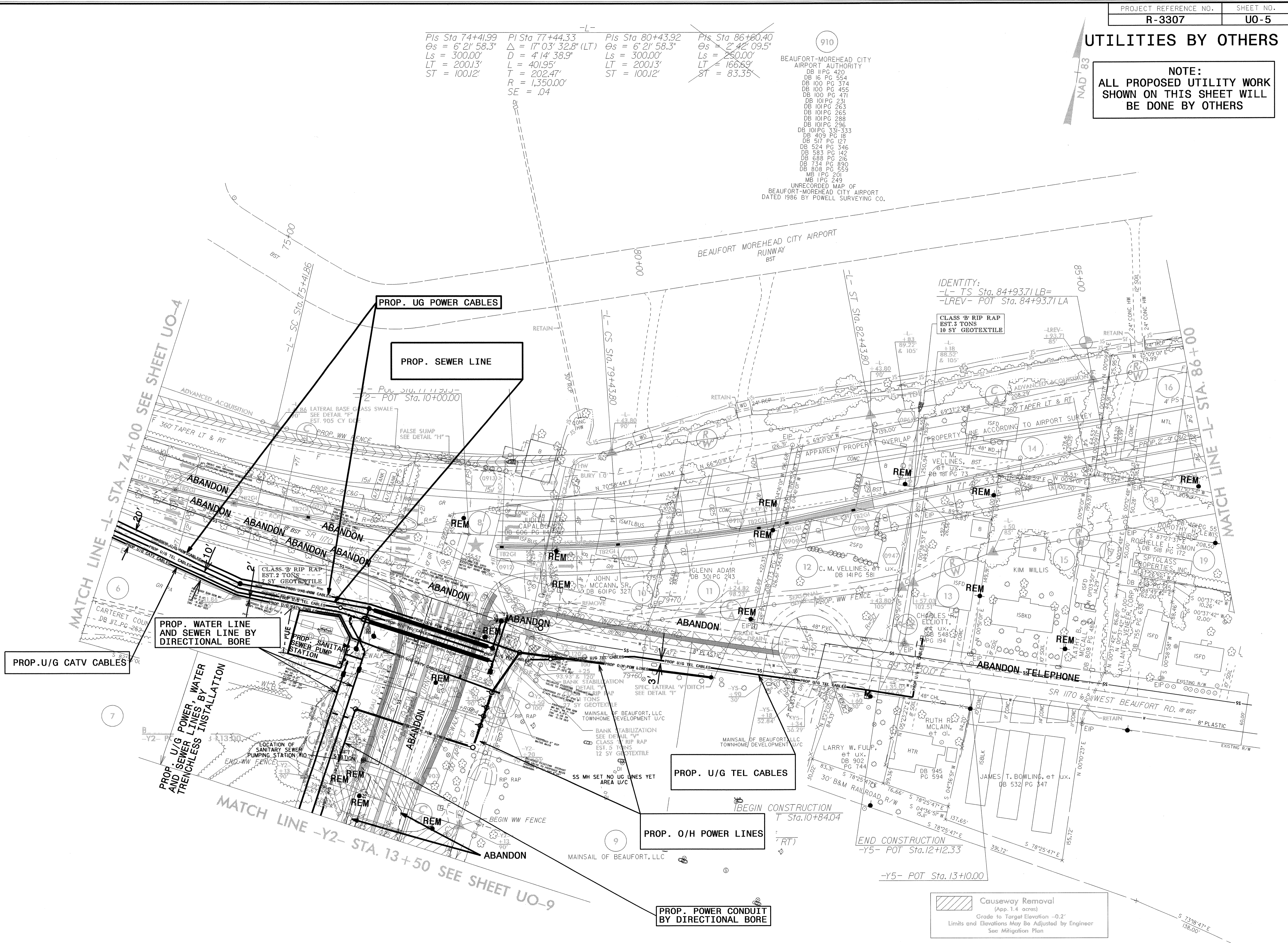
Pls Sta 80+43.92  
 $\theta_s = 6' 21' 58.3''$   
 $L_s = 300.00'$   
 $LT = 200.13'$   
 $ST = 100.12'$

Pls Sta 86+60.40  
 $\theta_s = 2' 42' 09.5''$   
 $L_s = 250.00'$   
 $LT = 166.69'$   
 $ST = 83.35'$

910  
 BEAUFORT-MOREHEAD CITY AIRPORT AUTHORITY  
 DB 11PG 420  
 DB 16 PG 554  
 DB 100 PG 374  
 DB 100 PG 455  
 DB 100 PG 471  
 DB 101PG 231  
 DB 101PG 263  
 DB 101PG 265  
 DB 101PG 288  
 DB 101PG 296  
 DB 101PG 331-333  
 DB 409 PG 18  
 DB 517 PG 127  
 DB 524 PG 346  
 DB 583 PG 142  
 DB 688 PG 216  
 DB 734 PG 890  
 DB 808 PG 559  
 MB 1PG 201  
 MB 1PG 249  
 UNRECORDED MAP OF BEAUFORT-MOREHEAD CITY AIRPORT DATED 1986 BY POWELL SURVEYING CO.

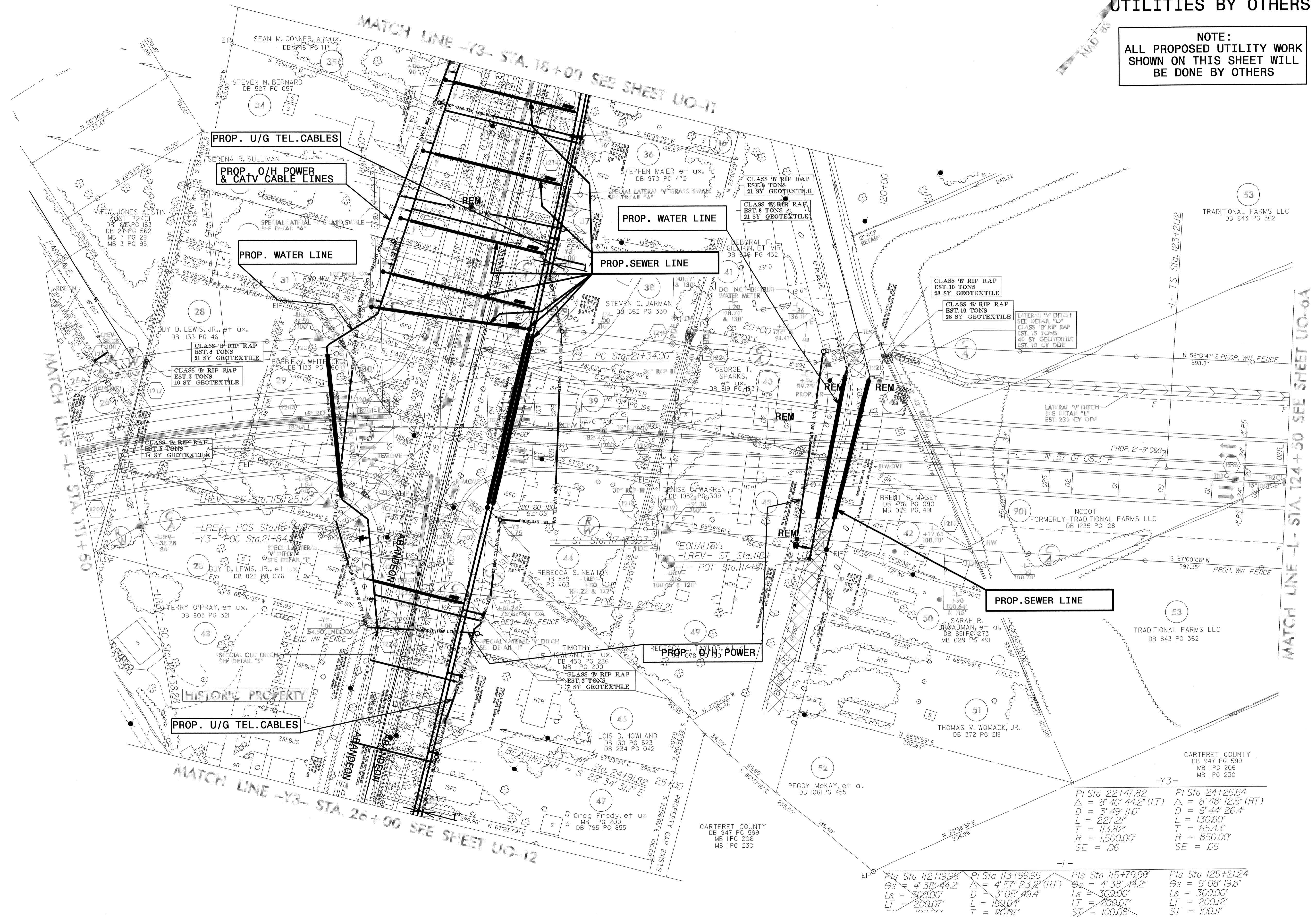
5/14/99

08-MAR-2012 08:37  
 R:\Utilities\Road\3307-ut-9-uo5-psh.dgn



UTILITIES BY OTHERS

NOTE:  
ALL PROPOSED UTILITY WORK  
SHOWN ON THIS SHEET WILL  
BE DONE BY OTHERS



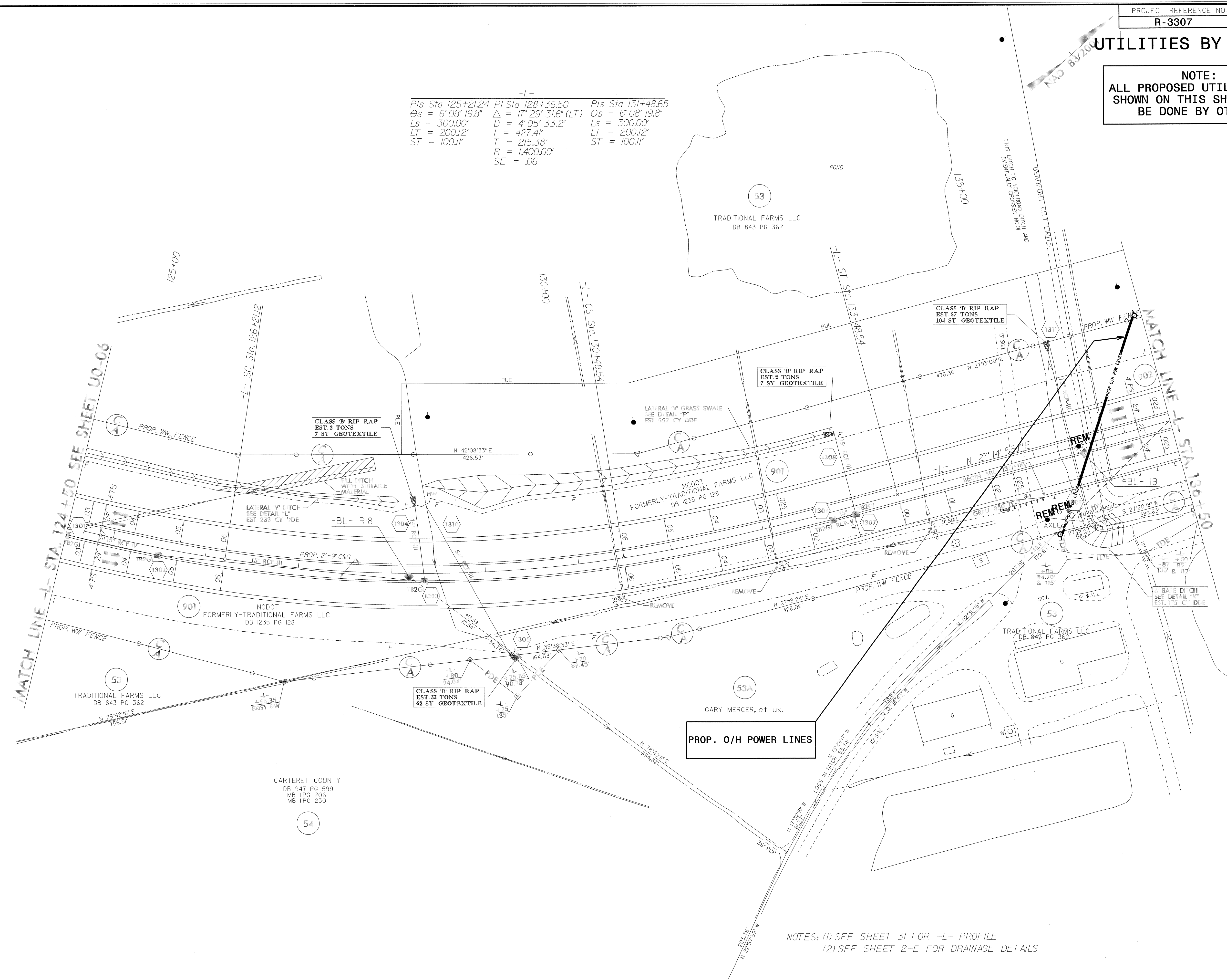
$PI\ Sta\ 22+47.82$ $\Delta = 8' 40' 44.2" (LT)$ $D = 3' 49' 11.0"$ $L = 227.2'$ $T = 113.82'$ $R = 1,500.00'$ $SE = .06$	$PI\ Sta\ 24+26.64$ $\Delta = 8' 48' 12.5" (RT)$ $D = 6' 44' 26.4"$ $L = 130.60'$ $T = 65.43'$ $R = 850.00'$ $SE = .06$
$PIs\ Sta\ 112+19.96$ $\Delta = 4' 38' 44.2" (LT)$ $Ls = 300.00'$ $LT = 209.07'$	$PI\ Sta\ 113+99.96$ $\Delta = 4' 57' 23.2" (RT)$ $D = 3' 05' 49.4"$ $L = 160.04'$ $T = 80.18'$
$PIs\ Sta\ 115+79.99$ $\Delta = 4' 38' 44.2" (LT)$ $Ls = 300.00'$ $LT = 209.07'$ $ST = 100.06'$	$PIs\ Sta\ 125+21.24$ $\Delta = 6' 08' 19.8" (RT)$ $Ls = 300.00'$ $LT = 200.12'$ $ST = 100.11'$

5/14/99  
01-MAY-2012 10:38  
R:\U\11\11-3307-ut-12-uo6-psh.dgn

UTILITIES BY OTHERS

NOTE:  
ALL PROPOSED UTILITY WORK  
SHOWN ON THIS SHEET WILL  
BE DONE BY OTHERS

-L-		
Pls Sta 125+21.24	PI Sta 128+36.50	Pls Sta 131+48.65
$\theta_s = 6^\circ 08' 19.8''$	$\Delta = 17^\circ 29' 31.6''$ (LT)	$\theta_s = 6^\circ 08' 19.8''$
$L_s = 300.00'$	$D = 4^\circ 05' 33.2''$	$L_s = 300.00'$
$LT = 200.12'$	$L = 427.41'$	$LT = 200.12'$
$ST = 100.11'$	$T = 215.38'$	$ST = 100.11'$
	$R = 1,400.00'$	
	$SE = .06$	



NOTES: (1) SEE SHEET 3I FOR -L- PROFILE  
(2) SEE SHEET 2-E FOR DRAINAGE DETAILS

REVISIONS

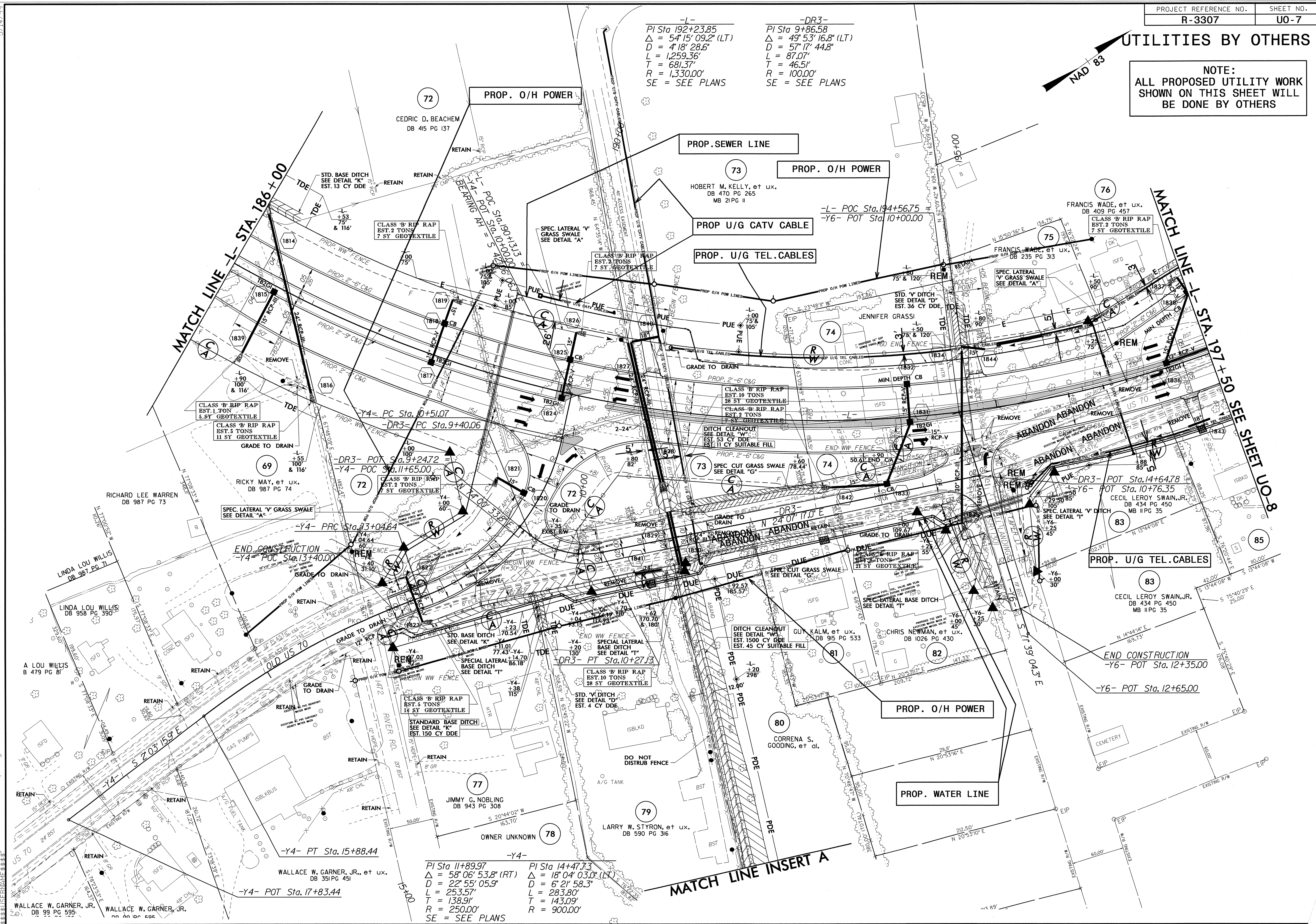
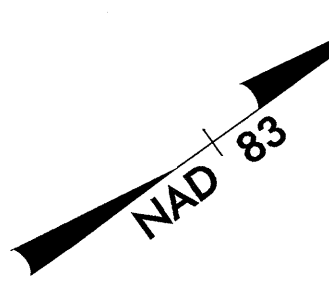
5/14/99

08-MAR-2012 08:38  
N:\UO\13\3307\UO-6A.psh.dgn

UTILITIES BY OTHERS

NOTE:  
ALL PROPOSED UTILITY WORK  
SHOWN ON THIS SHEET WILL  
BE DONE BY OTHERS

-L-	-DR3-
PI Sta 192+23.85	PI Sta 9+86.58
$\Delta = 54' 15" 09.2" (LT)$	$\Delta = 49' 53" 16.8" (LT)$
$D = 4' 18" 28.6"$	$D = 57' 17" 44.8"$
$L = 1,259.36'$	$L = 87.07'$
$T = 681.37'$	$T = 46.51'$
$R = 1,330.00'$	$R = 100.00'$
SE = SEE PLANS	SE = SEE PLANS



-Y4-	-Y4-
PI Sta 11+89.97	PI Sta 14+47.3
$\Delta = 58' 06" 53.8" (RT)$	$\Delta = 18' 04" 03.0" (LT)$
$D = 22' 55" 05.9"$	$D = 6' 21" 58.3"$
$L = 253.57'$	$L = 283.80'$
$T = 138.91'$	$T = 143.09'$
$R = 250.00'$	$R = 900.00'$
SE = SEE PLANS	SE = SEE PLANS

MATCH LINE INSERT A

5/14/09  
11-SEP-2012 09:26  
R:\U1\11-SEP-2012 09:26  
R-3307-ut-18-uo7-phs.dgn

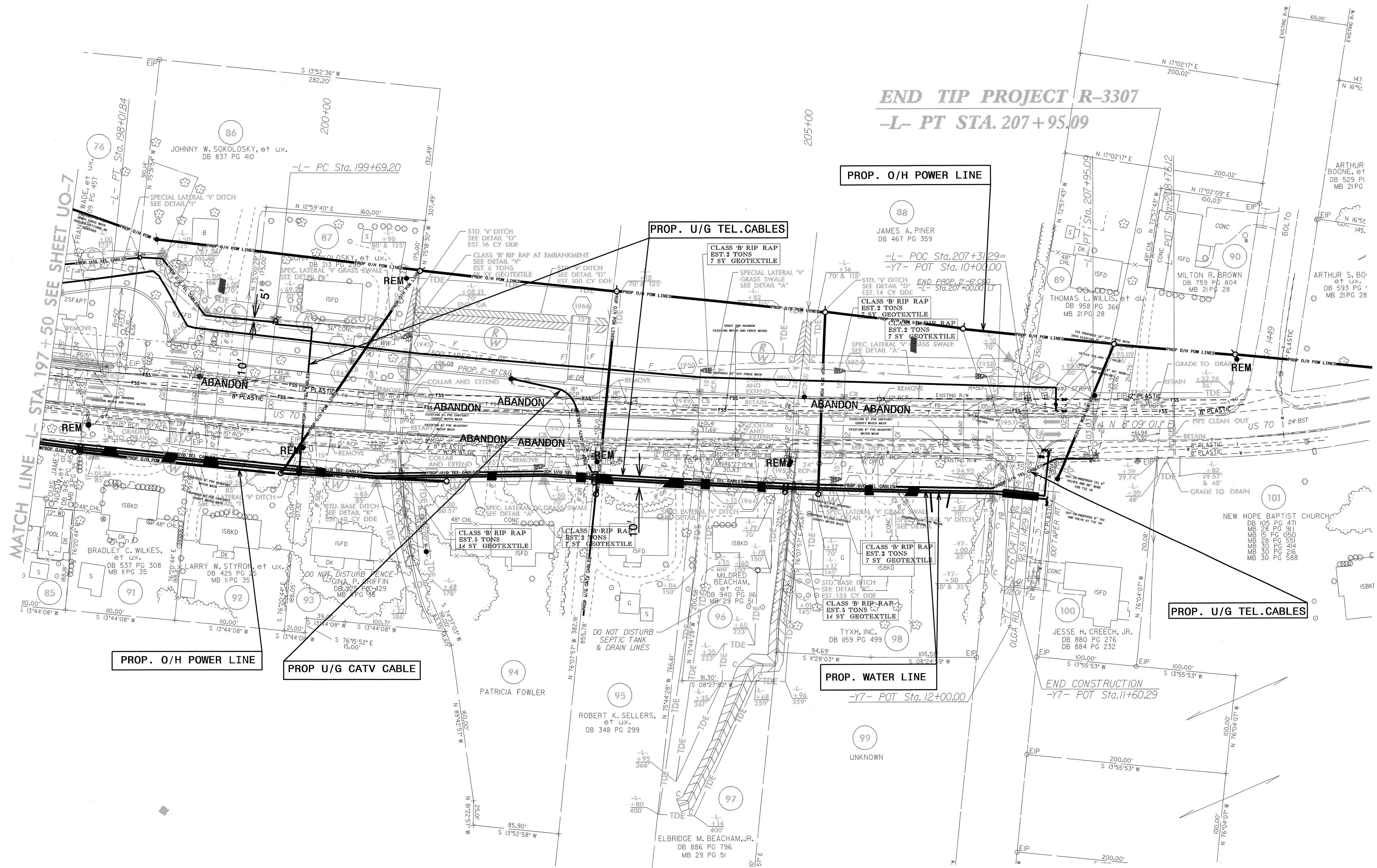


### UTILITIES BY OTHERS

**NOTE:**  
ALL PROPOSED UTILITY WORK  
SHOWN ON THIS SHEET WILL  
BE DONE BY OTHERS

-L-  
 PI Sta 192+23.85      PI Sta 203+82.50  
 $\Delta = 54'15''09.2''$  (LT)       $\Delta = 5'46'14.8''$  (LT)  
 $D = 4'18'28.6''$        $D = 0'4'55.4''$   
 $L = 1,259.36'$        $L = 825.90'$   
 $T = 681.37'$        $T = 413.30'$   
 $R = 1,330.00'$        $R = 8,200.00'$   
 SE = SEE PLANS      SE = NC

**END TIP PROJECT R-3307**  
**-L- PT STA. 207+95.09**



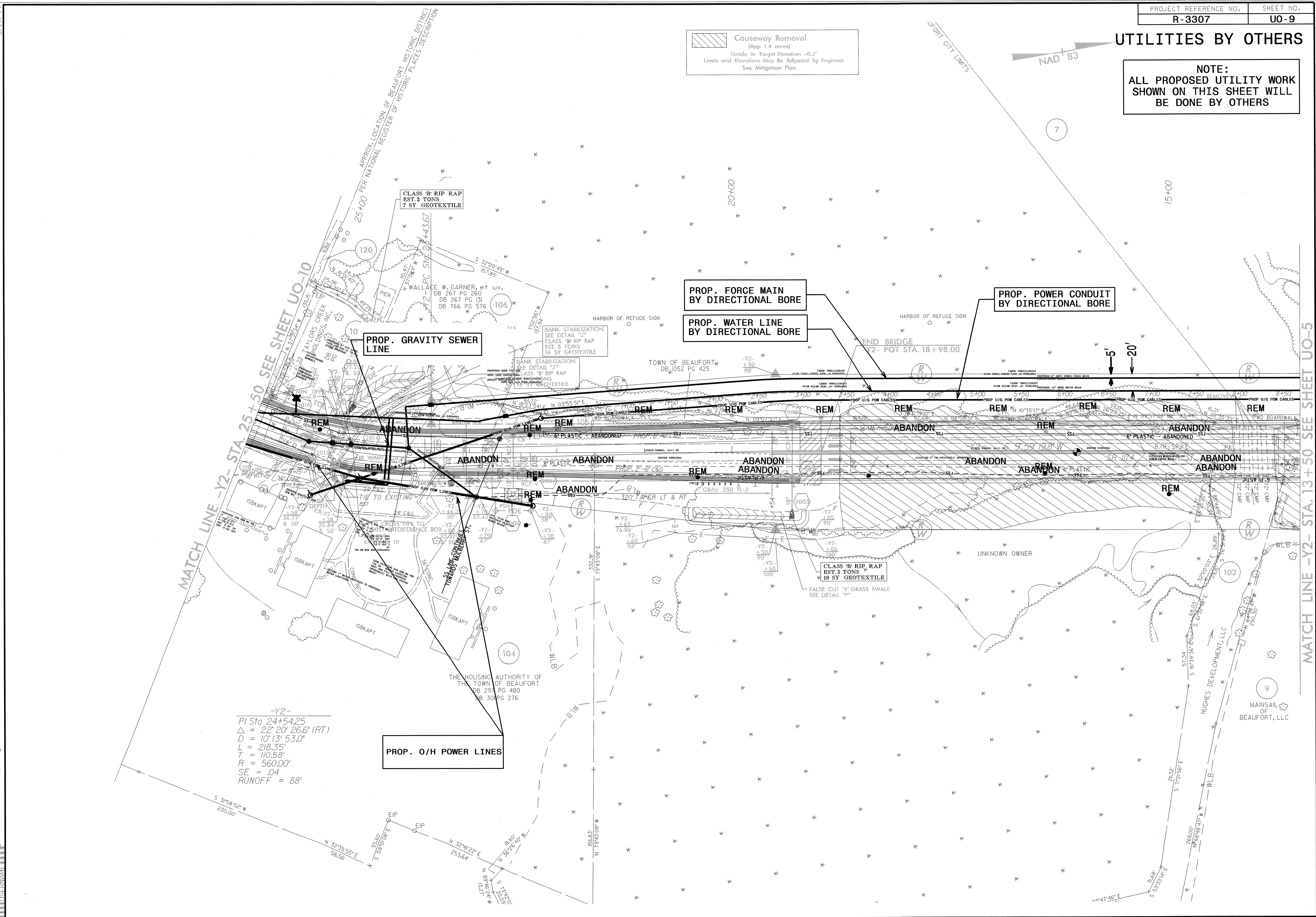
MATCH LINE -L- STA. 197+50 SEE SHEET UO-7

08-MAR-2012 08:38 R:\U\Projects\3307\ut\_19\_uo8\_psh.dgn

# UTILITIES BY OTHERS

**NOTE:**  
ALL PROPOSED UTILITY WORK  
SHOWN ON THIS SHEET WILL  
BE DONE BY OTHERS

**Causeway Removal**  
(App. 1.4 acres)  
Grade to Target Elevation -0.2'  
Limits and Elevations May Be Adjusted by Engineer  
See Mitigation Plan



-Y2-  
PI Sta 24+54.25  
 $\Delta = 22' 20'' 26.6''$  (RT)  
 $D = 10' 13' 53.0''$   
 $L = 218.35'$   
 $T = 110.58'$   
 $R = 560.00'$   
 $SE = .04$   
 $RUNOFF = 88'$

**PROP. O/H POWER LINES**

**PROP. GRAVITY SEWER LINE**

**PROP. FORCE MAIN BY DIRECTIONAL BORE**

**PROP. WATER LINE BY DIRECTIONAL BORE**

**PROP. POWER CONDUIT BY DIRECTIONAL BORE**

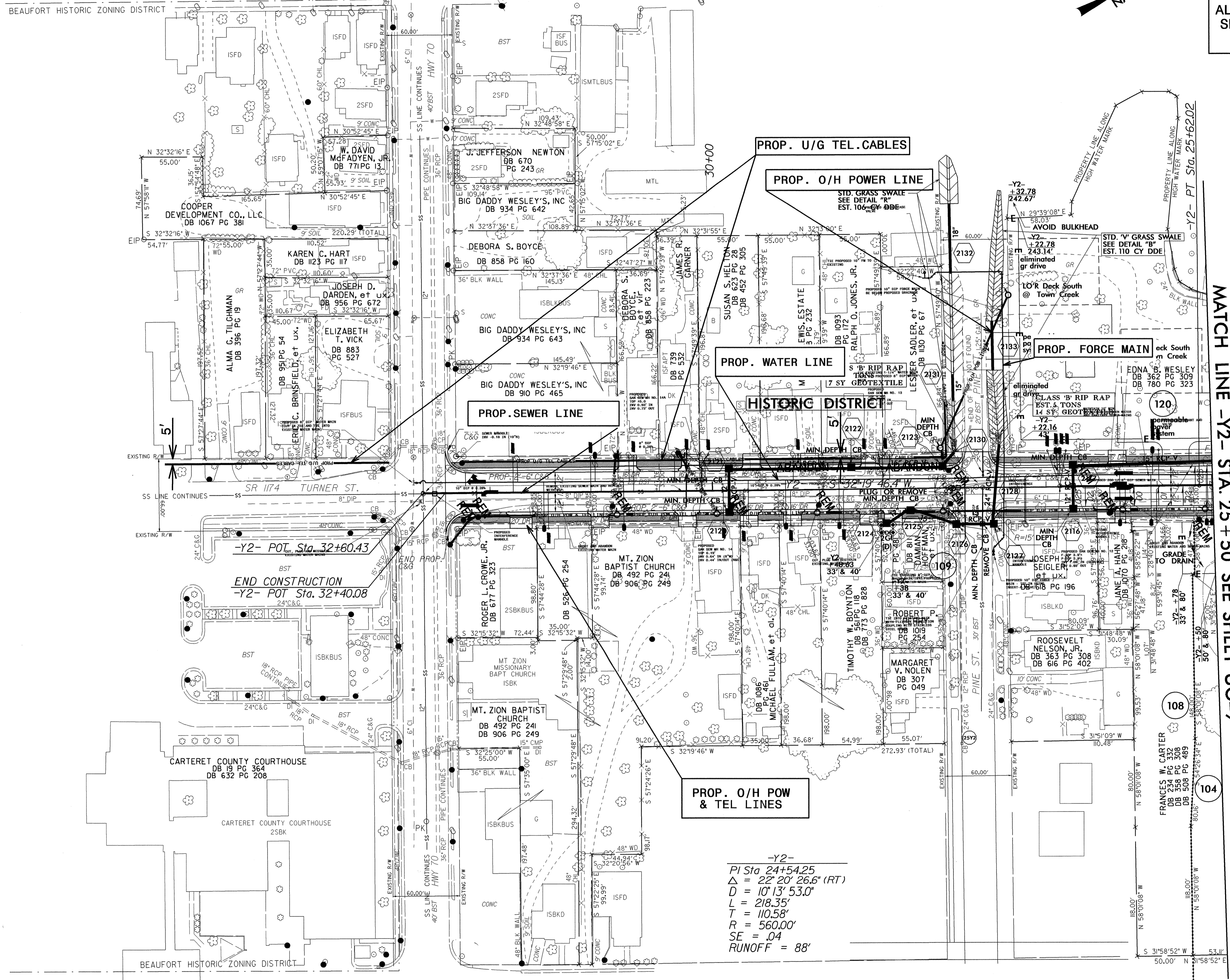
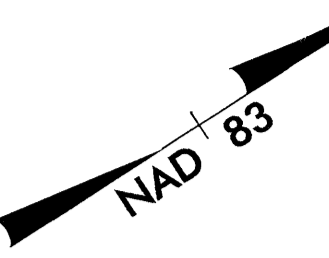
5/14/99

08-MAR-2016 09:38  
RAV:14:11  
R-3307-ut-20-uo9-psh.dgn

MATCH LINE -Y2- STA. 13+50 SEE SHEET UO-5

UTILITIES BY OTHERS

NOTE:  
 ALL PROPOSED UTILITY WORK  
 SHOWN ON THIS SHEET WILL  
 BE DONE BY OTHERS



MATCH LINE -Y2- STA. 25 + 50 SEE SHEET UO-9

PROP. O/H POW  
 & TEL LINES

-Y2-  
 PI Sta 24+54.25  
 $\Delta = 22^{\circ} 20' 26.6''$  (RT)  
 $D = 10' 13' 53.0''$   
 $L = 218.35'$   
 $T = 110.58'$   
 $R = 560.00'$   
 $SE = .04$   
 $RUNOFF = 88'$

APPROX. LOCATION OF BEAUFORT HISTORIC DISTRICT  
 PER NATIONAL REGISTER OF HISTORIC PLACES DESCRIPTION

5/14/09

12-JUN-2012 10:02  
 R:\Utilities\3307\ut\_21\_uo10\_psh.dgn



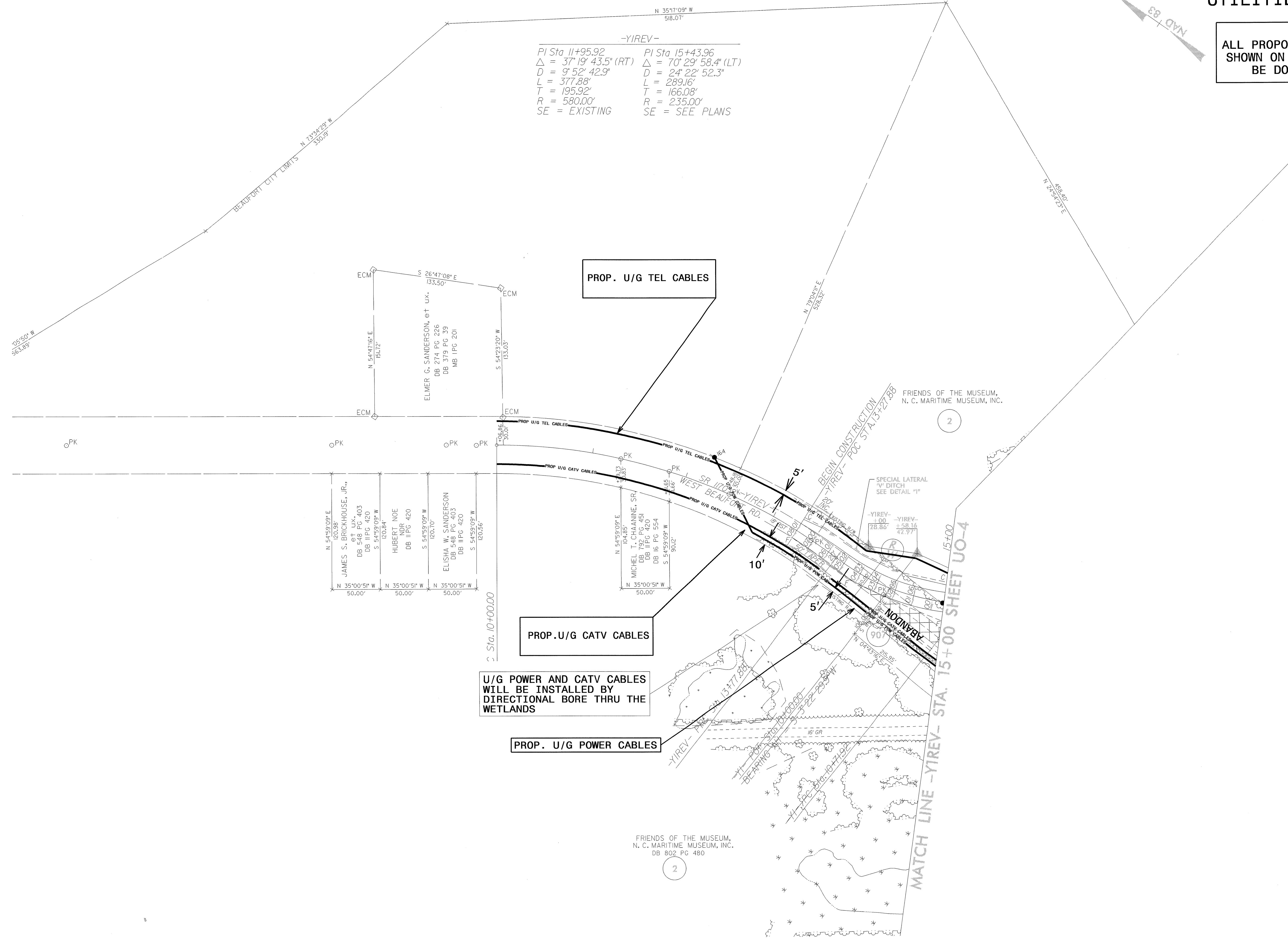


### UTILITIES BY OTHERS

**NOTE:**  
ALL PROPOSED UTILITY WORK  
SHOWN ON THIS SHEET WILL  
BE DONE BY OTHERS

-YIREV-

PI Sta 11+95.92	PI Sta 15+43.96
$\Delta = 37^{\circ} 19' 43.5''$ (RT)	$\Delta = 70^{\circ} 29' 58.4''$ (LT)
$D = 9^{\circ} 52' 42.9''$	$D = 24^{\circ} 22' 52.3''$
$L = 377.88'$	$L = 289.16'$
$T = 195.92'$	$T = 166.08'$
$R = 580.00'$	$R = 235.00'$
SE = EXISTING	SE = SEE PLANS



5/14/99

08-MAR-2012 08:39  
R:\U13\3307\3307-ut-24-uo13-psh.dgn