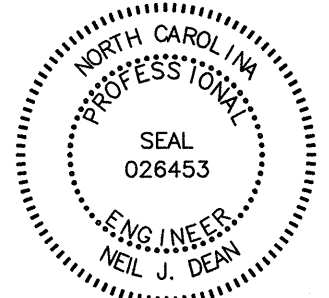


**STATE OF NORTH CAROLINA  
DEPARTMENT OF TRANSPORTATION**

**PAVEMENT MARKING PLAN  
WAKE COUNTY**

TIP NO. P-5201	SHEET NO. PMP-1
APPROVED: <i>Neil J. Dean</i>	
DATE: 9/16/2013	
SEAL	
	

0422DEL\_P19

**T.I.P.: P-5201**

**CONTRACT: C203255**

**PAVEMENT MARKING GENERAL NOTES**

THE FOLLOWING GENERAL NOTES APPLY AT ALL TIMES FOR THE DURATION OF THE CONSTRUCTION PROJECT, EXCEPT WHEN OTHERWISE NOTED IN THE PLAN, OR DIRECTED BY THE ENGINEER.

A) INSTALL PAVEMENT MARKINGS AND PAVEMENT MARKERS ON THE FINAL SURFACE AS FOLLOWS:

ROAD NAME	MARKING	MARKER
MORRISVILLE PARKWAY	THERMOPLASTIC	PERMANENT RAISED
CRABTREE CROSSING PARKWAY	THERMOPLASTIC	PERMANENT RAISED
BRISTOL CREEK DRIVE	THERMOPLASTIC	NONE
MORRISVILLE-CARPENTER	THERMOPLASTIC	PERMANENT RAISED
TOWN HALL DRIVE	THERMOPLASTIC	PERMANENT RAISED

B) TIE PROPOSED PAVEMENT MARKING LINES TO EXISTING PAVEMENT MARKING LINES.

C) REMOVE/REPLACE ANY CONFLICTING/DAMAGED PAVEMENT MARKINGS AND MARKERS.

**ROADWAY STANDARD DRAWINGS**

THE FOLLOWING ROADWAY STANDARDS AS APPEAR IN "ROADWAY STANDARD DRAWINGS" - PROJECT SERVICES UNIT - N.C. DEPARTMENT OF TRANSPORTATION - RALEIGH, N.C., DATED JANUARY 2012 ARE APPLICABLE TO THIS PROJECT AND BY REFERENCE HEREBY ARE CONSIDERED A PART OF THESE PLANS:

STD. NO.	TITLE
1205.01	PAVEMENT MARKINGS - LINE TYPES AND OFFSETS
1205.02	PAVEMENT MARKINGS - TWO-LANE AND MULTILANE ROADWAYS
1205.12	PAVEMENT MARKINGS - BRIDGES
1250.01	RAISED PAVEMENT MARKERS - INSTALLATION SPACING
1251.01	RAISED PAVEMENT MARKERS - PERMANENT AND TEMPORARY
1261.01	GUARDRAIL AND BARRIER DELINEATORS - INSTALLATION SPACING
1261.02	GUARDRAIL AND BARRIER DELINEATORS - TYPES AND MOUNTING
1262.01	GUARDRAIL END DELINEATION
1264.01	OBJECT MARKERS - TYPES

**INDEX**

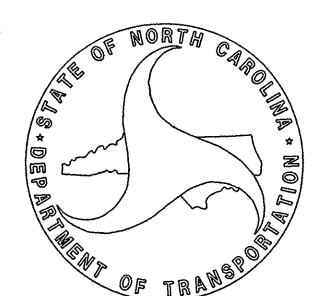
SHEET NO.	DESCRIPTION
PMP-1	TITLE SHEET
PMP-2	CROSSWALK AND STOPBAR PAVEMENT MARKING DETAIL
PMP-3 THRU PMP-6	PAVEMENT PARKING PLAN

**PAVEMENT MARKING SCHEDULE**

SYMBOL	DESCRIPTION
T2	THERMOPLASTIC (24", 120 MILS) WHITE STOPBAR
T8	THERMOPLASTIC (4", 120 MILS) 2 FT.-6 FT./SP WHITE MINISKIP
TC	10 FT. WHITE SKIP
TD	3 FT.-9 FT./SP WHITE MINISKIP
TE	WHITE SOLID LANE LINE
TI	YELLOW DOUBLE CENTER
TB	THERMOPLASTIC (4", 90 MILS) YELLOW EDGELINE
TQ	THERMOPLASTIC (8" 120 MILS) WHITE CROSSWALK LINE
TP	THERMOPLASTIC (8", 90 MILS) YELLOW DIAGONAL
UA	THERMOPLASTIC PAVEMENT MARKING SYMBOLS(90 MILS) LEFT TURN ARROW
UB	RIGHT TURN ARROW
UC	STRAIGHT ARROW
UE	COMBO STRAIGHT/RIGHT
MA	PERMANENT RAISED PAVEMENT MARKERS YELLOW & YELLOW
MB	CRYSTAL & RED

PLAN REVIEWED BY: N.C.D.O.T. SIGNING AND DELINEATION UNIT

**SUSAN KUNZ** SIGNING & DELINEATION STANDARDS ENGINEER  
**JAMES HAMBRIGHT** SIGNING & DELINEATION PROJECT DESIGN ENGINEER



PLAN PREPARED BY

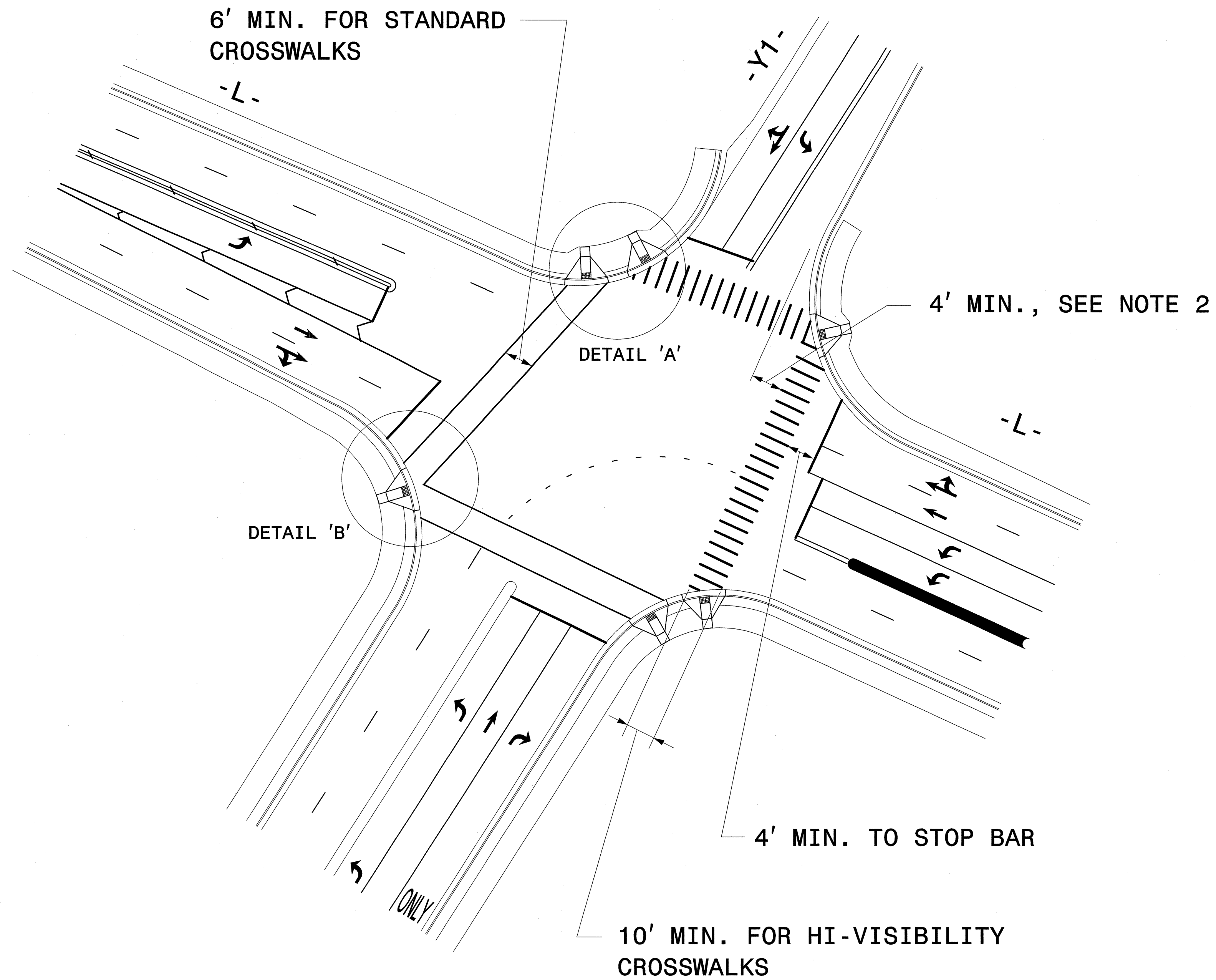
**Bill Jenkins, P.E.** AECOM PROJECT ENGINEER  
**Neil J. Dean, P.E.** AECOM SIGNING AND DELINEATION ENGINEER

**AECOM**

NC FIRM LICENSE No: F-0342  
701 Corporate Center Drive, Suite 475  
Raleigh, NC 27607  
(919) 854-6200 - (919) 854-6259(FAX)

\$\$\$ SYSTEMS \$\$\$  
\$\$\$ DONOR \$\$\$  
\$\$\$ USERNAME \$\$\$

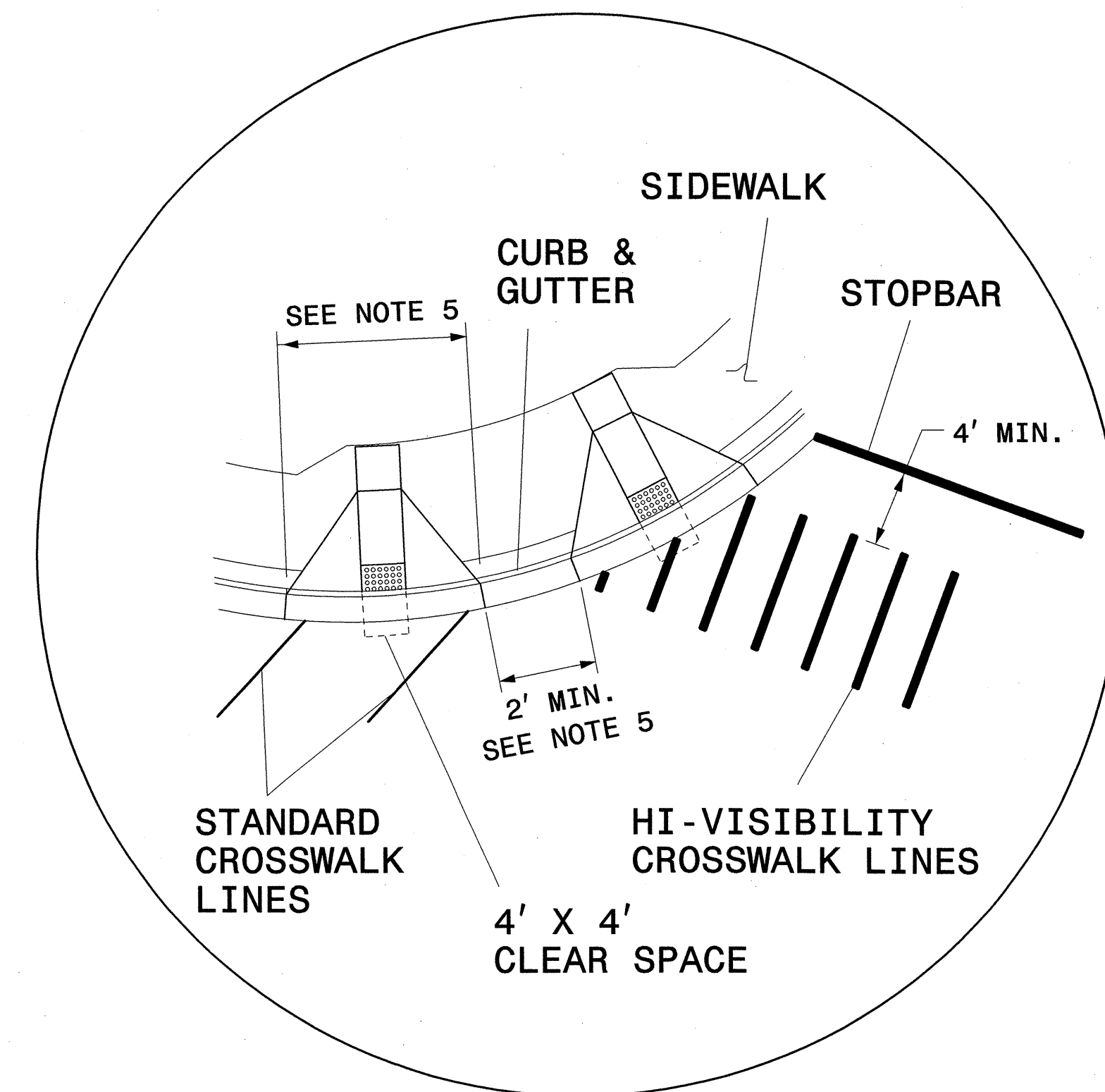
0422DEL\_P19



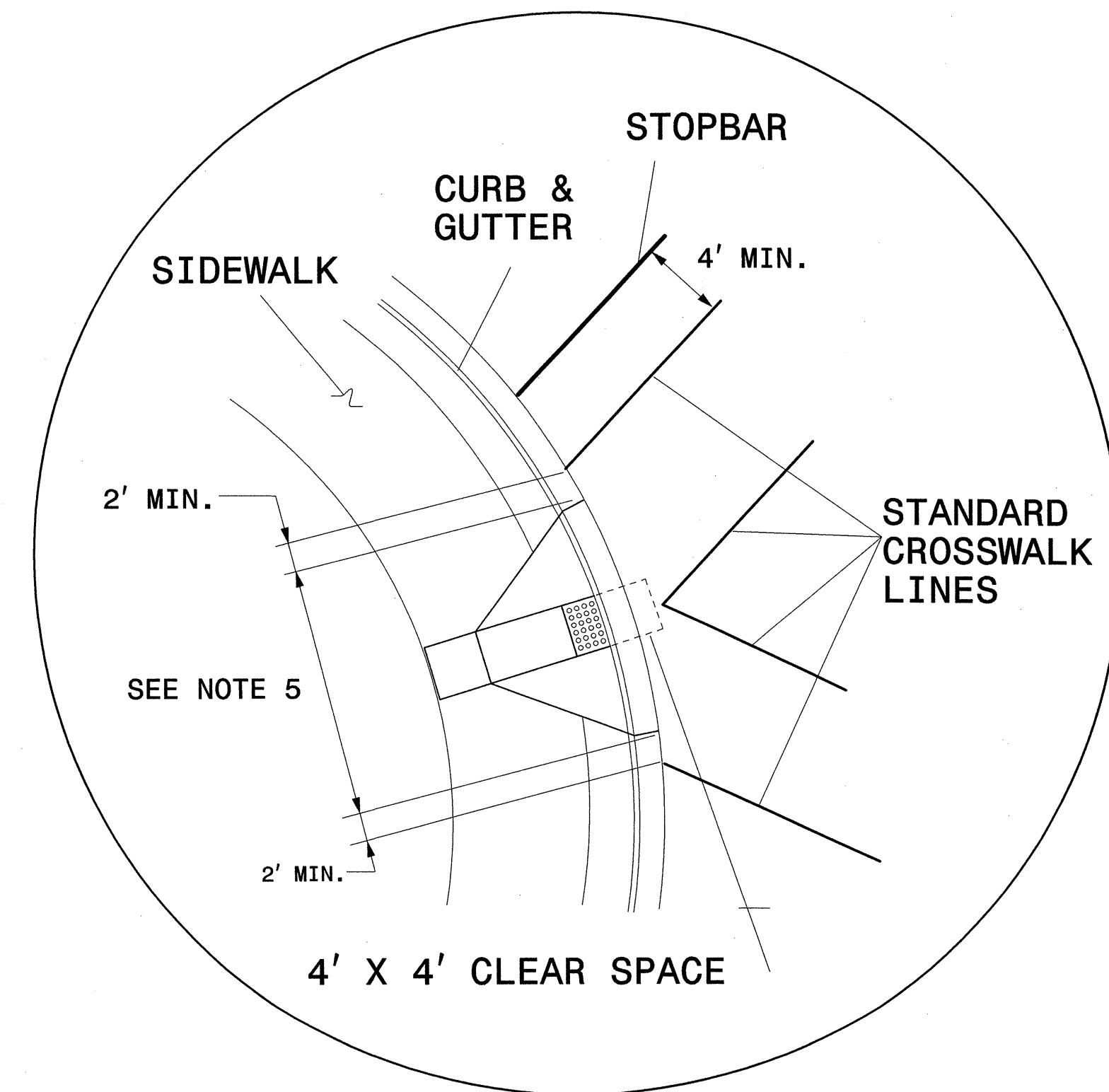
**GUIDANCE DETAIL FOR STANDARD AND HI-VISIBILITY CROSSWALKS AT SIGNALIZED OR STOP SIGN CONTROLLED INTERSECTIONS**

**NOTES:**

1. USE DETAILS ABOVE AND THE FOLLOWING NOTES FOR GUIDANCE IN PLACING CROSSWALKS AND STOP BARS NOT STATIONED ON THE DETAIL SHEETS OR WHEN FIELD ADJUSTMENTS REQUIRED MOVING STATIONED MARKINGS AS DIRECTED BY THE ENGINEER. REFER TO NCDOT ROADWAY STANDARD DRAWINGS, MUTCD AND ADA STANDARDS FOR ADDITIONAL GUIDANCE.
2. SET BACK DISTANCE FROM INSIDE CROSSWALK MARKING TO NEAREST EDGE OF TRAVEL IS 4' MIN.
3. BEYOND THE BOTTOM GRADE BRAKE, A CLEAR SPACE OF 4' X 4' MINIMUM SHALL BE PROVIDED WITHIN THE WIDTH OF THE CROSSWALK.
4. SINGLE DIAGONAL CURB RAMPS WITH FLARED SIDES SHALL HAVE A SEGMENT OF CURB 2 FEET LONG MINIMUM LOCATED ON EACH SIDE OF THE CURB RAMP AND WITHIN THE MARKED CROSSING, SEE DETAIL 'B'.
5. CURB RAMPS SHALL BE CONSTRUCTED IN ACCORDANCE TO THE LATEST NCDOT ROADWAY STANDARD DRAWINGS.



**DETAIL 'A'- DUAL CURB RAMPS**



**DETAIL 'B'- SINGLE DIAGONAL CURB RAMP**

\$\$\$\$SYTIME\$\$\$\$  
\$\$\$\$USER\$\$\$\$  
\$\$\$\$SERIAL\$\$\$\$

Prepared in the Office of **AECOM**  
NC FIRM LICENSE No F-0342  
 70 Corporate Center Drive, Suite 475  
 Raleigh, NC 27607  
 (919) 854-6200 • (919) 854-6259(FAX)

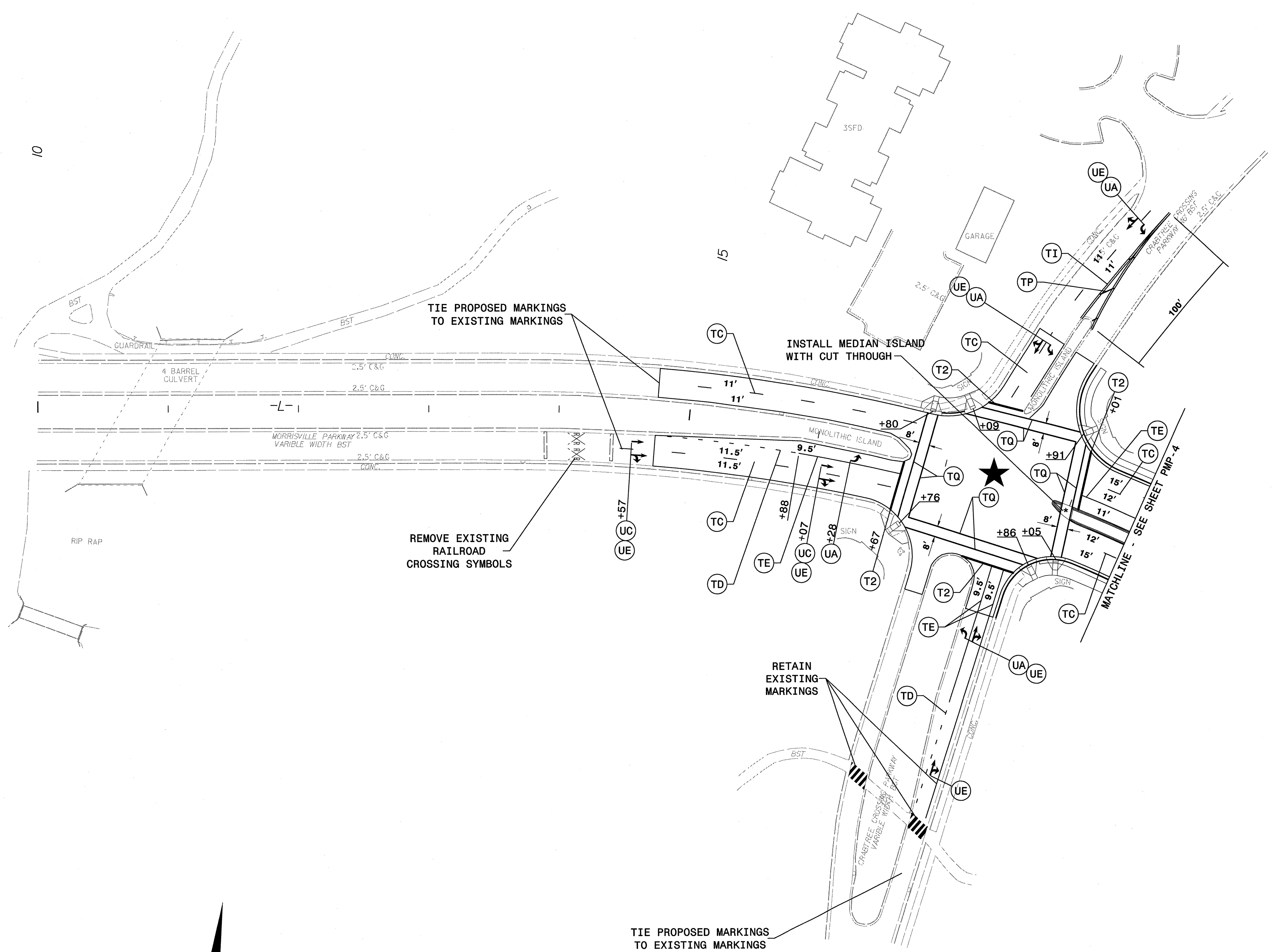
APPROVED: *Neil J. Dean* DATE: 9/16/2015

SEAL

<b>CROSSWALK AND STOP BAR PAVEMENT MARKING DETAIL</b>	
SCALE: N.T.S.	REVISIONS
DATE: 6/13	
DWG. BY: NJD	
DESIGN BY: NJD	
REVIEWED BY: TH	

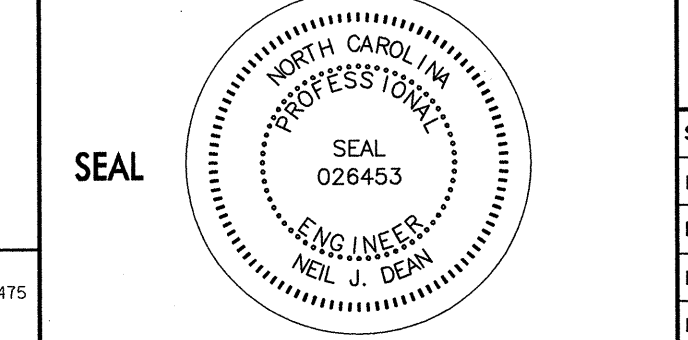


0422DEL\_P19



★ **SIGNALIZED INTERSECTION**

APPROVED: *[Signature]* DATE: 9/16/13

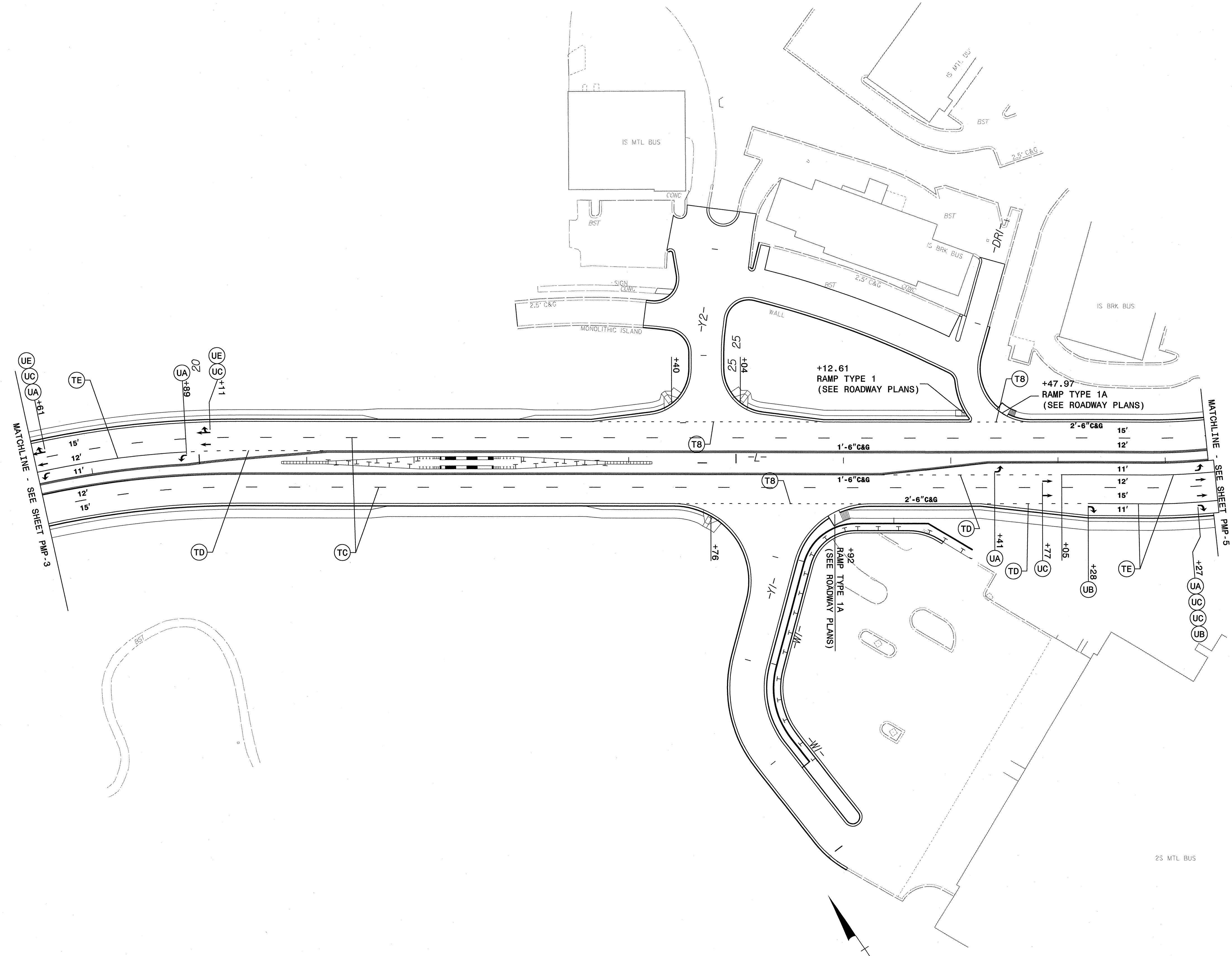


PAVEMENT MARKING PLAN	
SCALE: 1" = 50'	REVISIONS
DATE: 6/13	
DWG. BY: NJD	
DESIGN BY: NJD	
REVIEWED BY: TH	

Prepared in the Office of **AECOM**  
NC FIRM LICENSE No. F-0342  
 70 Corporate Center Drive, Suite 475  
 Raleigh, NC 27603  
 (919) 854-6200 • (919) 854-6299 FAX







2:06:27 PM  
 C:\p19\Traffic\Signing\CADD\Signing Layout Plans\P5201\pmp\_psh04.dgn  
 c:\p19\Traffic\Signing\CADD\Signing Layout Plans\P5201\pmp\_psh04.dgn

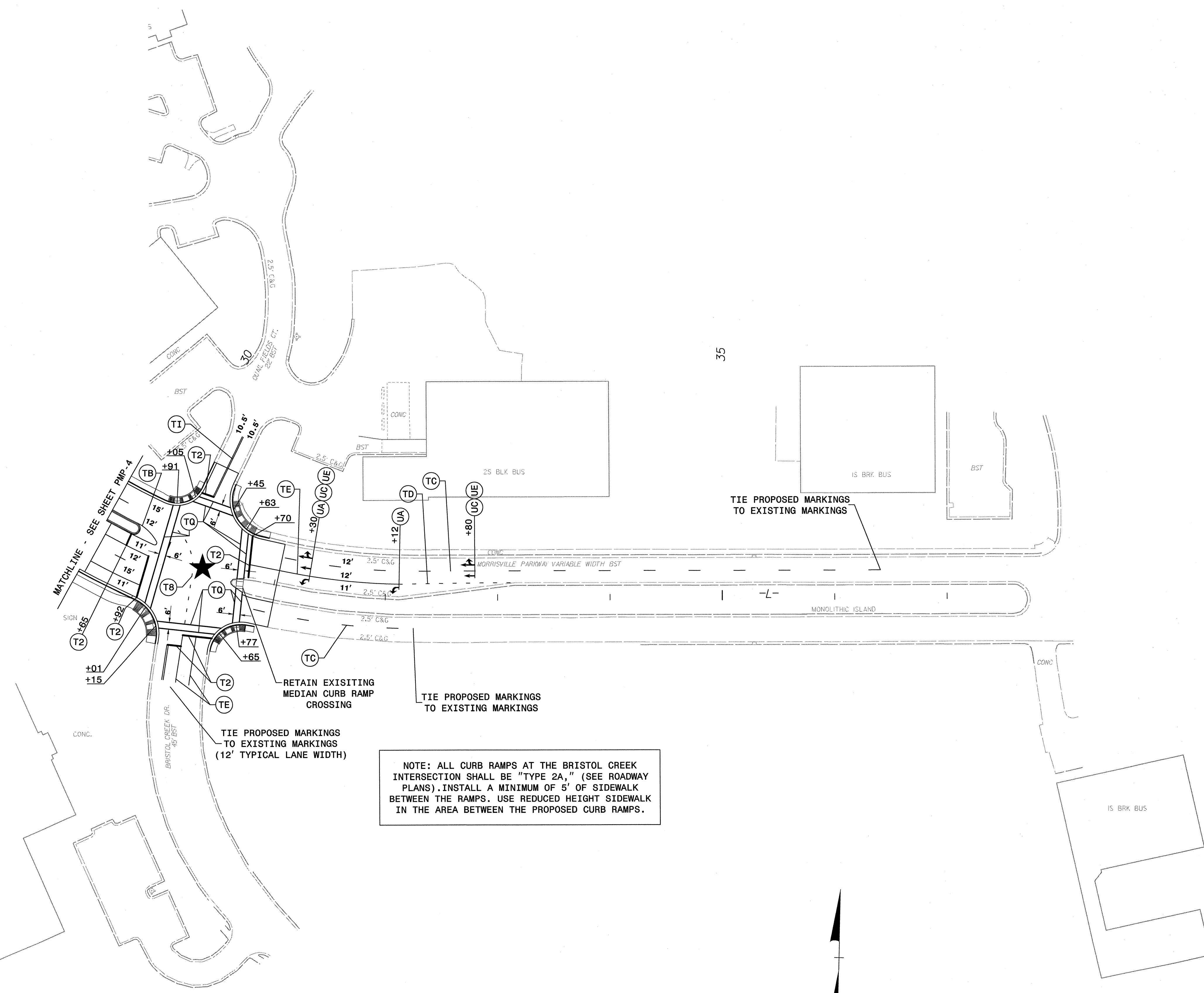
Prepared in the  
 Office of: **AECOM**  
 NC FIRM LICENSE No: F-0342  
 701 Corporate Center Drive, Suite 415  
 Raleigh, NC 27601  
 (919) 854-6200 (919) 854-6259 FAX

APPROVED: *[Signature]* DATE: 9/16/12  
 SEAL  
 NORTH CAROLINA  
 PROFESSIONAL  
 SEAL  
 026453  
 ENGINEER  
 NEL J. DEAN

<b>PAVEMENT MARKING PLAN</b>											
SCALE: 1" = 50'	<table border="1"> <tr><th colspan="2">REVISIONS</th></tr> <tr><td> </td><td> </td></tr> <tr><td> </td><td> </td></tr> <tr><td> </td><td> </td></tr> <tr><td> </td><td> </td></tr> </table>	REVISIONS									
REVISIONS											
DATE: 6/13											
DWG. BY: NJD											
DESIGN BY: NJD											
REVIEWED BY: TH											



CADD FILE



NOTE: ALL CURB RAMPS AT THE BRISTOL CREEK INTERSECTION SHALL BE "TYPE 2A," (SEE ROADWAY PLANS). INSTALL A MINIMUM OF 5' OF SIDEWALK BETWEEN THE RAMPS. USE REDUCED HEIGHT SIDEWALK IN THE AREA BETWEEN THE PROPOSED CURB RAMPS.

★ SIGNALIZED INTERESECTION

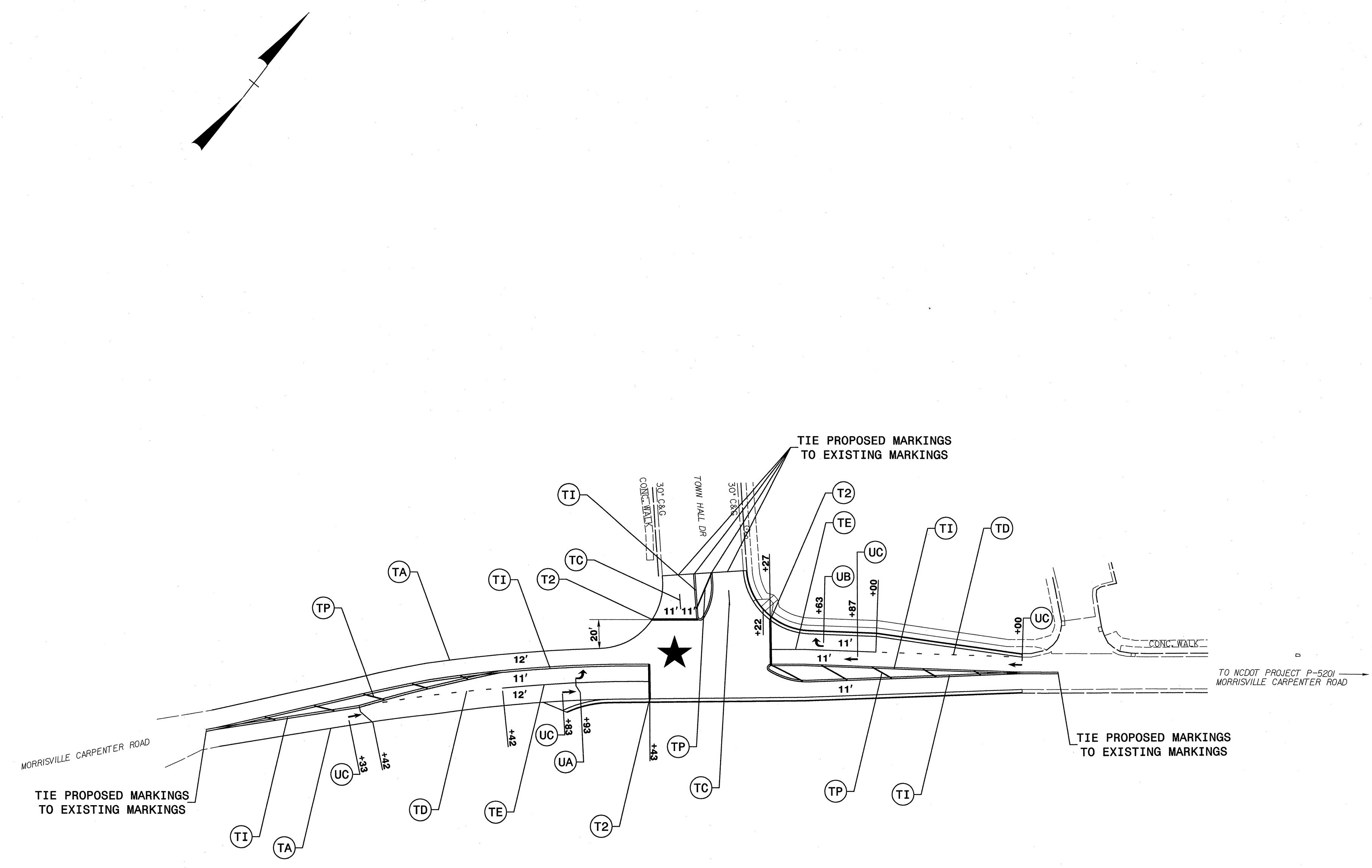
APPROVED: *Neil J. Dean* DATE: 9/16/13



PAVEMENT MARKING PLAN	
SCALE: 1" = 50'	REVISIONS
DATE: 6/13	
DWG. BY: NJD	
DESIGN BY: NJD	
REVIEWED BY: TH	



0422DEL\_P19



★ SIGNALIZED INTERSECTION

\$\$\$\$\$ SYSTEMS\$\$\$\$\$  
\$\$\$\$\$ DONSON\$\$\$\$\$  
\$\$\$\$\$ USERNAME\$\$\$\$\$

Prepared in the Office of: **AECOM**  
NC FIRM LICENSE No: F-0342  
 701 Corporate Center Drive, Suite 475  
 Raleigh, NC 27607  
 (919) 854-6200 / (919) 854-6259 FAX

APPROVED: *[Signature]* DATE: 10/11/13

SEAL

PAVEMENT MARKING PLAN		REVISIONS
SCALE:	1" = 50'	
DATE:	6/13	
DWG. BY:	NJD	
DESIGN BY:	NJD	
REVIEWED BY:	TH	
CADD	PRE	

