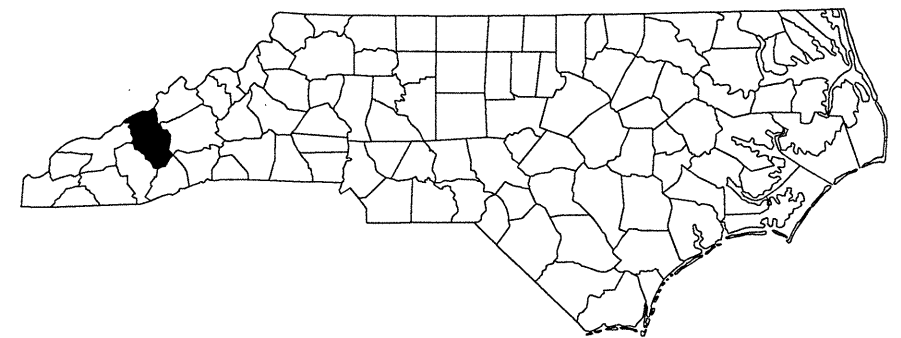
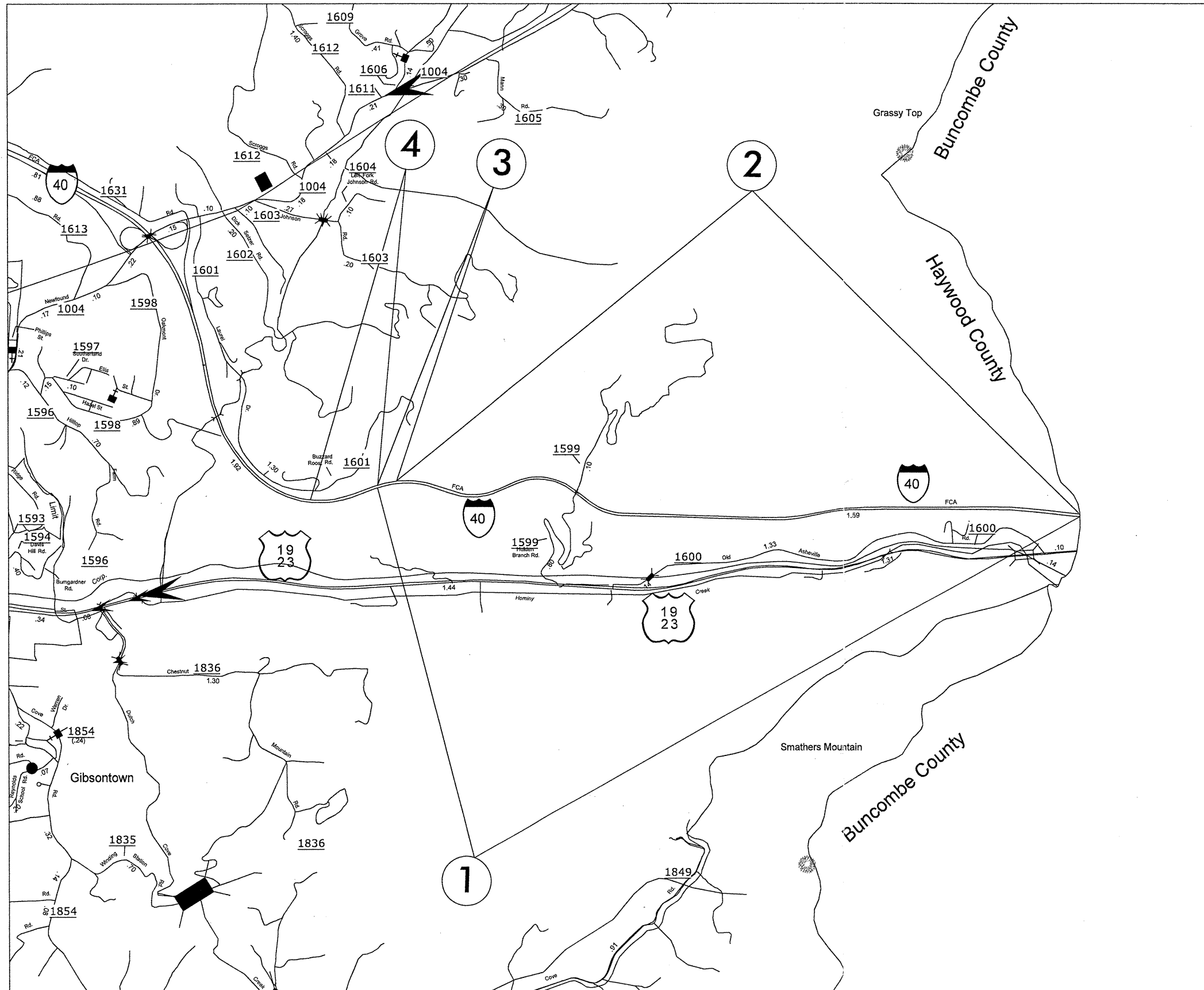


PROJECT REFERENCE NO.		SHEET NO.
I-5323		1
STATE PROJECT	F.A. PROJECT NO.	DESCRIPTION
47042.3.1	NHPP-040-(1248)34	

HAYWOOD COUNTY

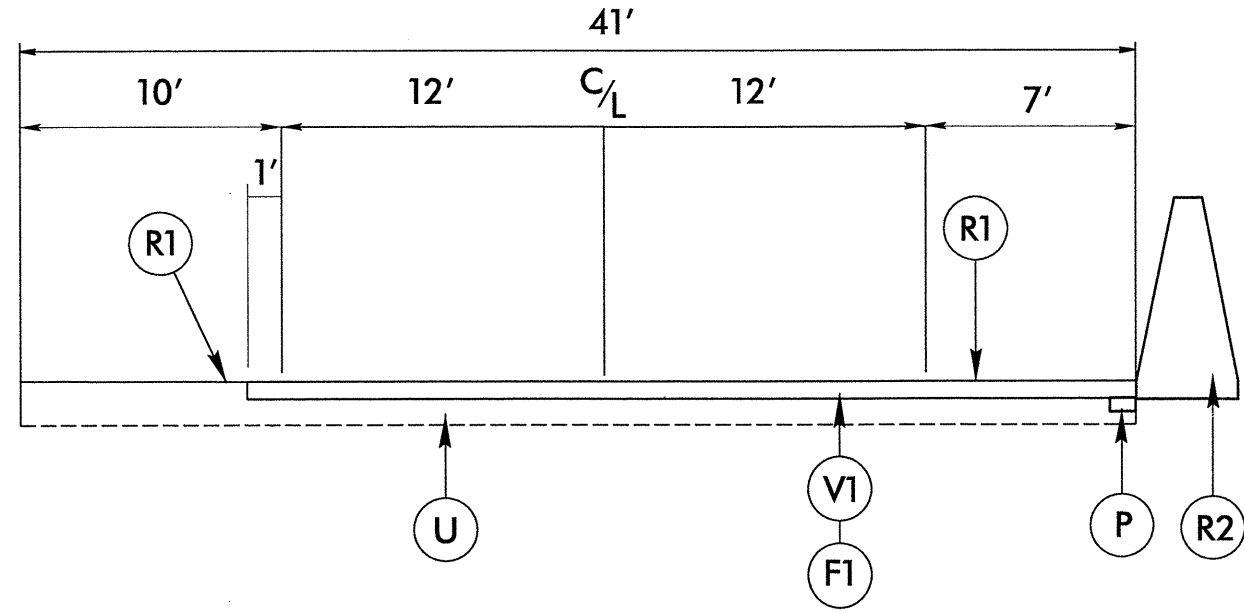


050197

PROJECT REFERENCE NO.		SHEET NO.
I-5323		2
STATE PROJECT	F.A. PROJECT NO.	DESCRIPTION
47042, 1.1	NHPP-040-(248)34	

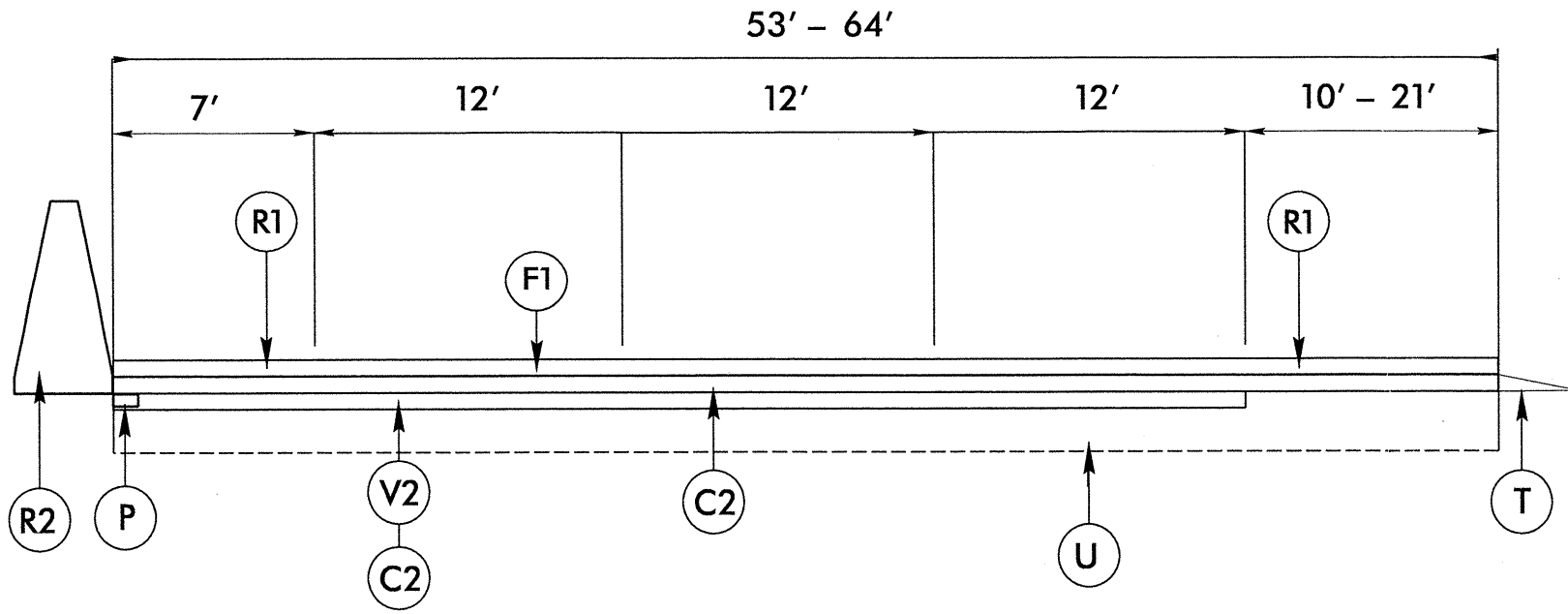
TYPICAL 1

I-40 EASTBOUND STA. 0+00 - 117+35



TYPICAL 2

I-40 WESTBOUND STA. 0+00 - 114+00



SURFACING SCHEDULE

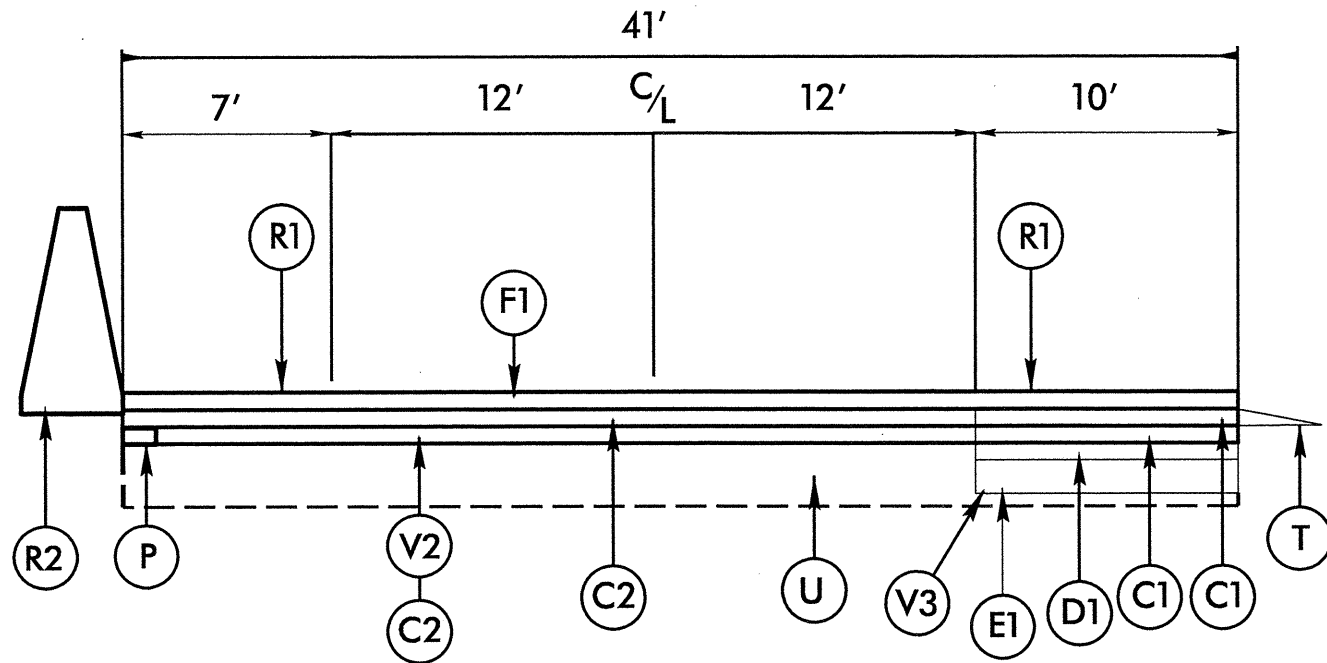
ITEM NO	DESCRIPTION
C1	ASPHALT CONCRETE SURFACE COURSE, TYPE S9.5C, AT AN AVERAGE RATE OF 168 LBS. PER SQ. YD. (1 1/2")
C2	ASPHALT CONCRETE SURFACE COURSE, TYPE S9.5D, AT AN AVERAGE RATE OF 168 LBS. PER SQ. YD. (1 1/2")
D1	ASPHALT CONCRETE SURFACE COURSE, TYPE I19.0C, AT AN AVERAGE RATE OF 399 LBS. PER SQ. YD. (3 1/2")
F1	OPEN GRADED ASPHALT FRICTION COURSE, TYPE FC-2 MOD, AT AN AVERAGE RATE OF 90 LBS. PER SQ. YD.
E1	ASPHALT CONCRETE SURFACE COURSE, TYPE B25.0C, AT AN AVERAGE RATE OF 570 LBS. PER SQ. YD. (5")
P	ASPHALT PLANT MIX PAVEMENT REPAIR
R1	MILLED RUMBLE STRIPS
R2	PROPOSED CONCRETE BARRIER
V1	MILLING ASPHALT PAVEMENT 1" IN DEPTH AS DIRECTED BY PROJECT ENGINEER.
V2	MILLING ASPHALT PAVEMENT 1 1/2" IN DEPTH AS DIRECTED BY PROJECT ENGINEER.
V3	MILLING ASPHALT PAVEMENT 10" IN DEPTH AS DIRECTED BY PROJECT ENGINEER.
T	SHOULDER RECONSTRUCTION WITH INCIDENTAL STONE SEE SPECIAL PROVISIONS
U	EXISTING PAVEMENT

050197

PROJECT REFERENCE NO.		SHEET NO.
I-5233		3
STATE PROJECT	F.A. PROJECT NO.	DESCRIPTION
	NHPP-040-1(248)34	

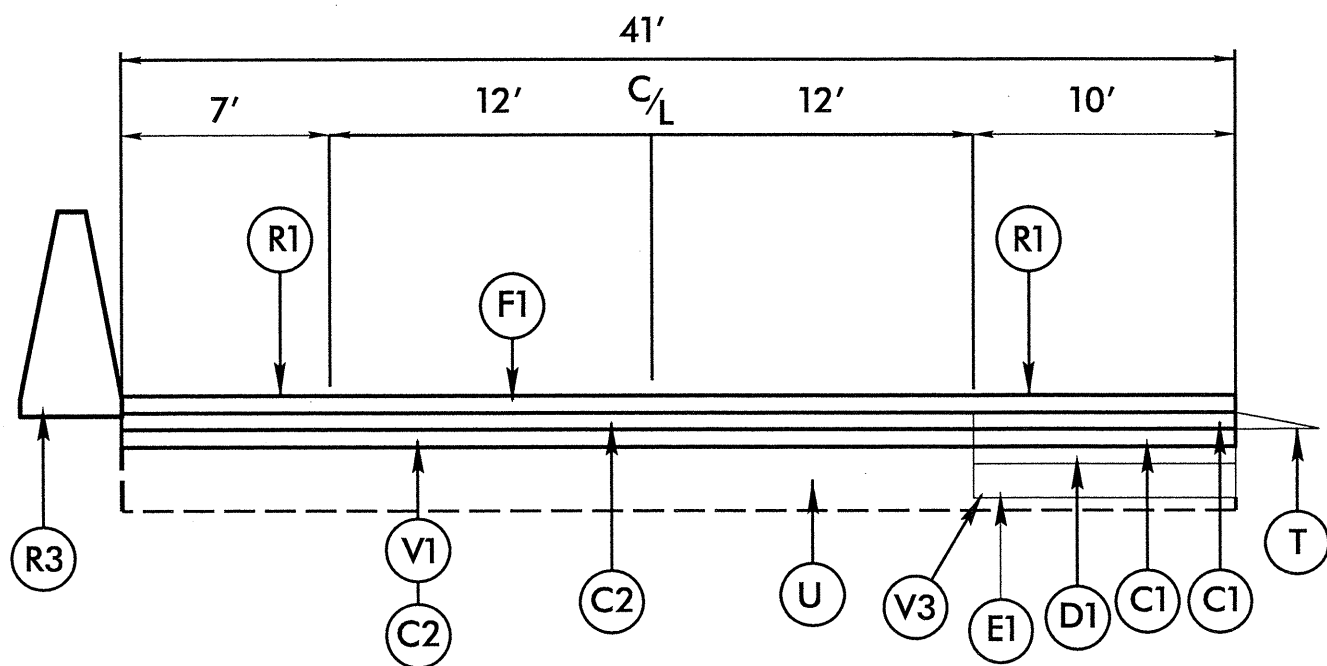
TYPICAL 3

I-40 WESTBOUND STA. 114+00 - 117+35



TYPICAL 4

I-40 WESTBOUND STA. 117+35 - 125+15



SURFACING SCHEDULE

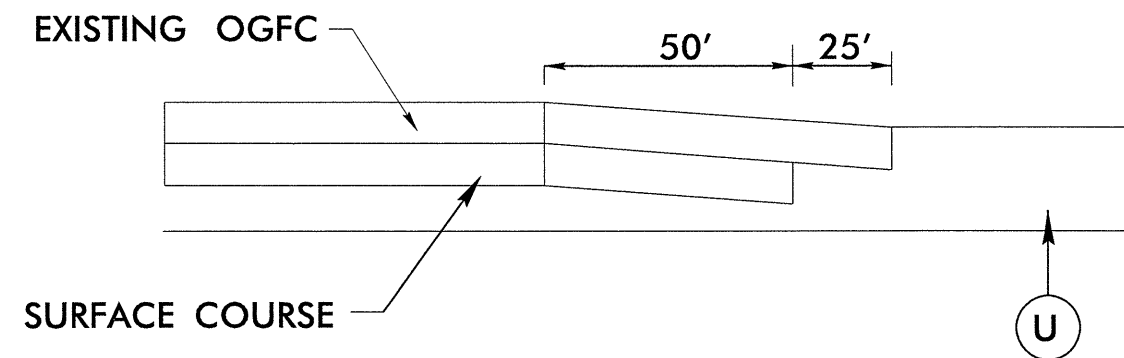
ITEM NO	DESCRIPTION
C1	ASPHALT CONCRETE SURFACE COURSE, TYPE S9.5C, AT AN AVERAGE RATE OF 168 LBS. PER SQ. YD. (1 1/2")
C2	ASPHALT CONCRETE SURFACE COURSE, TYPE S9.5D, AT AN AVERAGE RATE OF 168 LBS. PER SQ. YD. (1 1/2")
D1	ASPHALT CONCRETE SURFACE COURSE, TYPE I19.0C, AT AN AVERAGE RATE OF 399 LBS. PER SQ. YD. (3 1/2")
F1	OPEN GRADED ASPHALT FRICTION COURSE, TYPE FC-2 MOD, AT AN AVERAGE RATE OF 90 LBS. PER SQ. YD.
E1	ASPHALT CONCRETE SURFACE COURSE, TYPE B25.0C, AT AN AVERAGE RATE OF 570 LBS. PER SQ. YD. (5")
P	ASPHALT PLANT MIX PAVEMENT REPAIR
R1	MILLED RUMBLE STRIPS
R2	PROPOSED CONCRETE BARRIER
R3	EXISTING CONCRETE BARRIER
V1	MILLING ASPHALT PAVEMENT 1" IN DEPTH AS DIRECTED BY PROJECT ENGINEER.
V2	MILLING ASPHALT PAVEMENT 1 1/2" IN DEPTH AS DIRECTED BY PROJECT ENGINEER.
V3	MILLING ASPHALT PAVEMENT 10" IN DEPTH AS DIRECTED BY PROJECT ENGINEER.
T	SHOULDER RECONSTRUCTION WITH INCIDENTAL STONE SEE SPECIAL PROVISIONS
U	EXISTING PAVEMENT

PROJECT REFERENCE NO.		SHEET NO.
I-5323		4
STATE PROJECT	F.A. PROJECT NO.	DESCRIPTION
47042,3,1	NHPP-040-1(248)34	

SURFACING SCHEDULE

ITEM NO	DESCRIPTION
C1	ASPHALT CONCRETE SURFACE COURSE, TYPE S9.5C, AT AN AVERAGE RATE OF 168 LBS. PER SQ. YD. (1 1/2")
C2	ASPHALT CONCRETE SURFACE COURSE, TYPE S9.5D, AT AN AVERAGE RATE OF 168 LBS. PER SQ. YD. (1 1/2")
D1	ASPHALT CONCRETE SURFACE COURSE, TYPE I19.OC, AT AN AVERAGE RATE OF 399 LBS. PER SQ. YD. (3 1/2")
F1	OPEN GRADED ASPHALT FRICTION COURSE, TYPE FC-2 MOD, AT AN AVERAGE RATE OF 90 LBS. PER SQ. YD.
E1	ASPHALT CONCRETE SURFACE COURSE, TYPE B25.OC, AT AN AVERAGE RATE OF 570 LBS. PER SQ. YD. (5")
P	ASPHALT PLANT MIX PAVEMENT REPAIR
R1	MILLED RUMBLE STRIPS
R2	PROPOSED CONCRETE BARRIER
V1	MILLING ASPHALT PAVEMENT 1" IN DEPTH AS DIRECTED BY PROJECT ENGINEER.
V2	MILLING ASPHALT PAVEMENT 1 1/2" IN DEPTH AS DIRECTED BY PROJECT ENGINEER.
V3	MILLING ASPHALT PAVEMENT 10" IN DEPTH AS DIRECTED BY PROJECT ENGINEER.
T	SHOULDER RECONSTRUCTION WITH INCIDENTAL STONE SEE SPECIAL PROVISIONS
U	EXISTING PAVEMENT

INCIDENTAL MILLING DETAIL



PROJECT NO.	SHEET NO.	TOTAL NO.
I-5323, 47042.3.1	5	

SUMMARY OF QUANTITIES

PROJECT NO	COUNTY	MAP NO	ROUTE	DESCRIPTION	TYP	LANES	LANE TYPE	FINAL SURFACE TESTING REQUIRED	WARM MIX ASPHALT REQUIRED	LENGTH MI	WIDTH FT	PIPE CLEAN-OUT EA	SHOULDER RECONSTRUCTION SMI	1" MILLING SY	1½" MILLING SY	10" MILLING SY	INCIDENTAL MILLING SY	BASE COURSE, B25.0C TONS	INTERMEDIATE COURSE, I19.0C TONS	SURFACE COURSE, S9.5C TONS	SURFACE COURSE, S9.5D TONS	OPEN-GRADED ASPHALT FRICTION COURSE, TYPE FC-2 MODIFIED TON	ASPHALT BINDER FOR PLANT MIX TONS	POLYMER MODIFIED ASPHALT BINDER FOR PLANT MIX TONS
I-5323	Haywood	1	I-40 EB	EASTBOUND	1	2	MD	NO	NO	2.223	41	5		40,428								1,991		121
I-5323	Haywood	2	I-40 WB	WESTBOUND	2	3	MD	YES	NO	2.159	53	11	1.50		54,476		442				11,281	3,336		847
I-5323	Haywood	3	I-40 WB	WESTBOUND	3	2	MD	YES	NO	0.063	41		0.06		1,154	373		106	74	74	202	69	13	16
I-5323	Haywood	4	I-40 WB	WESTBOUND	4	2	MD	NO	NO	0.148	41		0.15	2,692		867	342	243	173	163	379	160	29	31
TOTAL FOR PROJ NO. I-5323										4.593		16	1.71	43,120	55,630	1,240	784	349	247	237	11,862	5,556	42	1,015
GRAND TOTAL										4.593		16	1.71	43,120	55,630	1,240	784	349	247	237	11,862	5,556	42	1,015

PROJECT NO	COUNTY	MAP NO	ROUTE	DESCRIPTION	TYP	LANES	LANE TYPE	FINAL SURFACE TESTING REQUIRED	WARM MIX ASPHALT REQUIRED	LENGTH MI	WIDTH FT	AC PLANT MIX (REPAIR) TONS	MILLED RUMBLE STRIPS (ASPHALT CEMENT CONCRETE) LF	CONCRETE BARRIER, TYPE SINGLE SLOPE 48" LF	CONCRETE BARRIER TRANSITION SECTION EA	ADJ. OF DROP INLET EA	DRAINAGE STRUCTURE CLEANOUT EA	STEEL BM GUARDRAIL LF	GUARDRAIL ANCHOR UNITS, TYPE CAT-1 EA	GUARDRAIL ANCHOR UNITS, TYPE III EA	GUARDRAIL ANCHOR UNITS, TYPE 350 EA	REMOVE EXISTING GUARDRAIL LF	PORTABLE LIGHTING EA
I-5323	Haywood	1	I-40 EB	EASTBOUND	1	2	MD	NO	NO	2.223	41	892	24300	11700	2		5	6862	1	2	4	6862	
I-5323	Haywood	2	I-40 WB	WESTBOUND	2	3	MD	YES	NO	2.159	53	866	24000			11	11						1
I-5323	Haywood	3	I-40 WB	WESTBOUND	3	2	MD	YES	NO	0.063	41	26	670										
I-5323	Haywood	4	I-40 WB	WESTBOUND	4	2	MD	NO	NO	0.148	41		1560										
TOTAL FOR PROJ NO. I-5323										4.593		1,784	50,530	11,700	2	11	16	6,862	1	2	4	6,862	1
GRAND TOTAL										4.593		1,784	50,530	11,700	2	11	16	6,862	1	2	4	6,862	1

GUARDRAIL SUMMARY

SURVEY LINE	BEG. STA.	END STA.	LOCATION	LENGTH		ANCHORS							IMPACT ATTENUATOR TYPE 350		SINGLE FACED CONCRETE BARRIER	REMOVE EXISTING GUARDRAIL	REMOVE & STOCKPILE EXISTING GUARDRAIL	REMARKS		
				STRAIGHT	SH O P C U R V E D	DOUB LE FACE D	XI MOD	XI	GRAU 350	M-350	XIII	CAT-1	VI MOD	BIC					III	G
Map 1	0+00	37+99		3799						1								3799		Tie to existing
Map 1	49+66	58+64		898						1								898		
Map 1	84+83	96+18		1135						1								1135		
Map 1	107+05	117+35		1030						1								1030		
TOTAL										4								6,862		

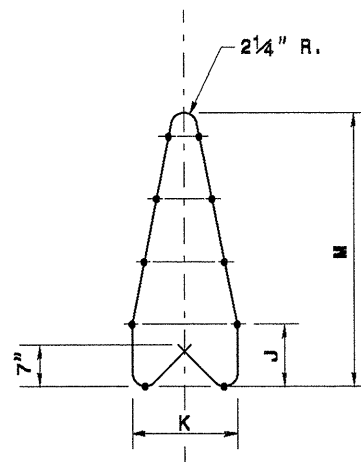
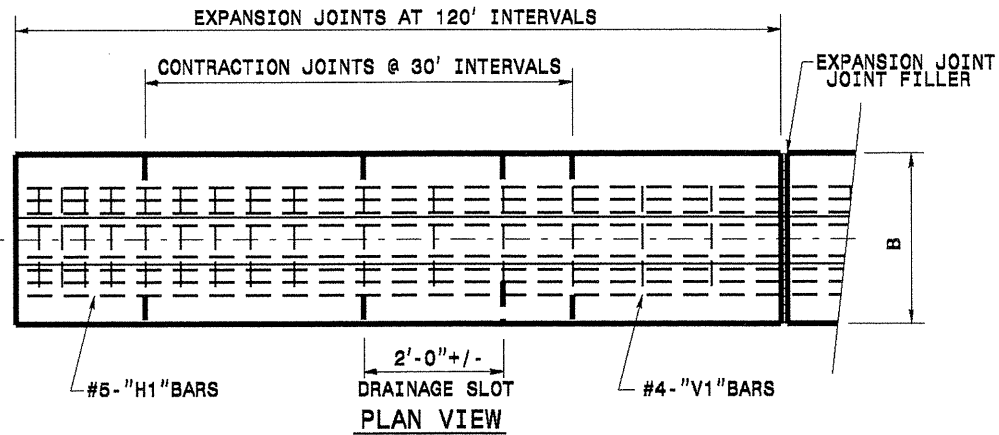
PROJECT NO.	SHEET NO.	TOTAL NO.
I-5323, 47042.3.1	6	

THERMOPLASTIC AND PAINT QUANTITIES

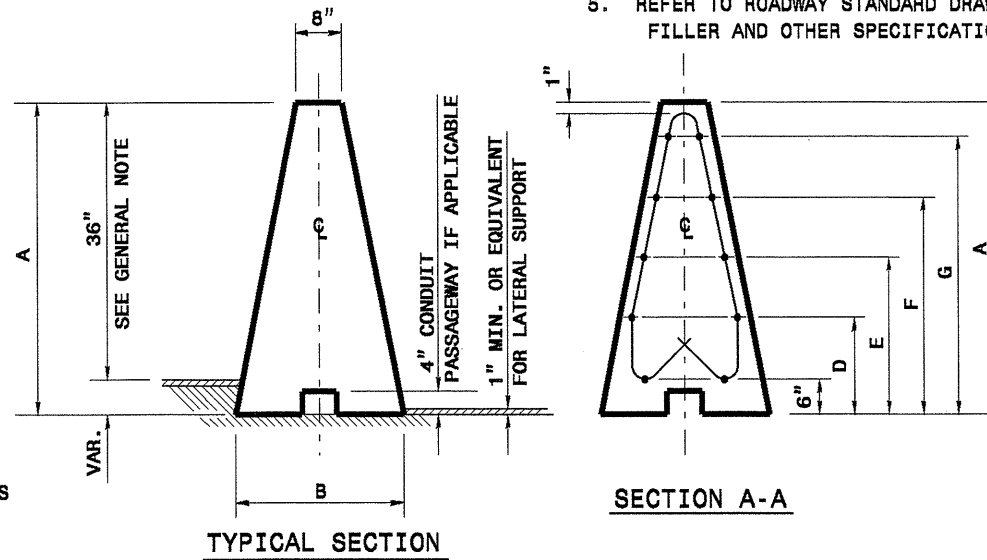
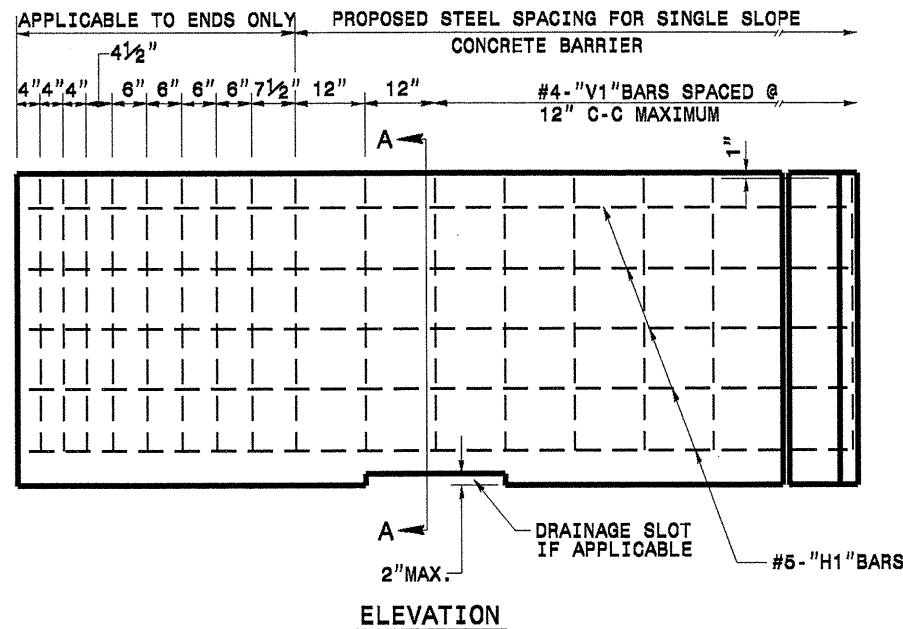
PROJECT NO	COUNTY	MAP NO	ROUTE	DESCRIPTION	TYP NO	LANES	LANE TYPE	LENGTH	WIDTH	4400000000-E	4405000000-E	4415000000-N	4420000000-N	4430000000-N	4465000000-N	4470000000-N	4480000000-N	4485000000-E	4490000000-E	4500000000-E	4505000000-E	4510000000-N
										STATIONARY WORK ZONE SIGN SF	PORTABLE WORK ZONE SIGN SF	FLASHING ARROW PANELS, TYPE C EA	PORTABLE CHANGEABLE MESSAGE SIGN EA	DRUMS EA	TEMPORARY CRASH CUSHIONS EA	RESET TEMPORARY CRASH CUSHION EA	TMA EA	PORTABLE CONCRETE BARRIER (DRNG) LF	PORTABLE CONCRETE BARRIER (ANCHORED) LF	RESET PORTABLE CONCRETE BARRIER LF	RESET PORTABLE CONCRETE BARRIER (ANCHORED) LF	LAW ENFORCEMENT HR
I-5323	Haywood	1	I-40 EB	EASTBOUND	1	2	MD	2.223	41	104	382	3	3	130	1	1	1		6,060		9,105	200
TOTAL FOR MAP NO. 1									2.223	104	382	3	3	130	1	1	1		6,060		9,105	200
I-5323	Haywood	2	I-40 WB	WESTBOUND	2	3	MD	2.159	53	104	383	4		150	1	1	1	6,170		9,235		200
TOTAL FOR MAP NO. 2									2.159	104	383	4		150	1	1	1	6,170		9,235		200
I-5323	Haywood	3	I-40 WB	WESTBOUND	3	2	MD	0.063	41													
TOTAL FOR MAP NO. 3									0.063													
I-5323	Haywood	4	I-40 WB	WESTBOUND	4	2	MD	0.148	41													
TOTAL FOR MAP NO. 4									0.148													
TOTAL FOR PROJ NO. I-5323									4.593	208	765	7	3	280	2	2	2	6,170	6,060	9,235	9,105	400
GRAND TOTAL									4.593	208	765	7	3	280	2	2	2	6,170	6,060	9,235	9,105	400

PROJECT NO	COUNTY	MAP NO	ROUTE	DESCRIPTION	TYP NO	LANES	LANE TYPE	LENGTH	WIDTH	4650000000-N	4688000000-E		4690000000-E	4721000000-E	4725000000-E	4815000000-E		4840000000-N	4845000000-N	4850000000-E	4855000000-E	4875000000-N	4905000000-N
										TEMPORARY RAISED PAVEMENT MARKERS EA	6" X 90 M WHITE THERMO LF	6" X 90 M YELLOW THERMO LF	6" X 120 M WHITE THERMO LF	THERMOPLASTIC PAVEMENT MARKING CHARACTER (120 MILS) "NO TRUCKS THIS LANE" EA	THERMO STR ARROW 90 M EA	6" WHITE PAINT LF	6" YELLOW PAINT LF	PAINT MSG "NO TRUCKS THIS LANE" EA	PAINT STR ARROW EA	6" LINE REMOVAL LF	REMOVAL OF PAVEMENT MARKING LINES (6") LF	REMOVAL OF PAVEMENT MARKING SYMBOLS & CHARACTERS EA	SNOW PLOWABLE MARKERS EA
I-5323	Haywood	1	I-40 EB	EASTBOUND	1	2	MD	2.223	41	749	12,150	12,150	3,040	32		60750	48600				45000		152
TOTAL FOR MAP NO. 1									2.223	749	12,150	12,150	3,040	32		60750	48600				45000		152
I-5323	Haywood	2	I-40 WB	WESTBOUND	2	3	MD	2.159	53	756	12,000	12,000	6,000	112	5	144000	96000	560	20		60000	117	364
TOTAL FOR MAP NO. 2									2.159	756	12,000	12,000	6,000	112	5	144000	96000	560	20		60,000	117	364
I-5323	Haywood	3	I-40 WB	WESTBOUND	3	2	MD	0.063	41	20	335	335	90			3,400	2,680			1,520			5
TOTAL FOR MAP NO. 3									0.063	20	335	335	90			3,400	2,680			1,520			5
I-5323	Haywood	4	I-40 WB	WESTBOUND	4	2	MD	0.148	41	52	780	780	200			5,080	4,680			3,520			10
TOTAL FOR MAP NO. 4									0.148	52	780	780	200			5,080	4,680			3,520			10
TOTAL FOR PROJ NO. I-5323									4.593	1,577	25,265	25,265	9,330	144	5	213,230	151,960	560	20	5,040	105,000	117	531
GRAND TOTAL									4.593	1,577	25,265	25,265	9,330	144	5	213,230	151,960	560	20	5,040	105,000	117	531
											50,530						365,190						

5/14/99



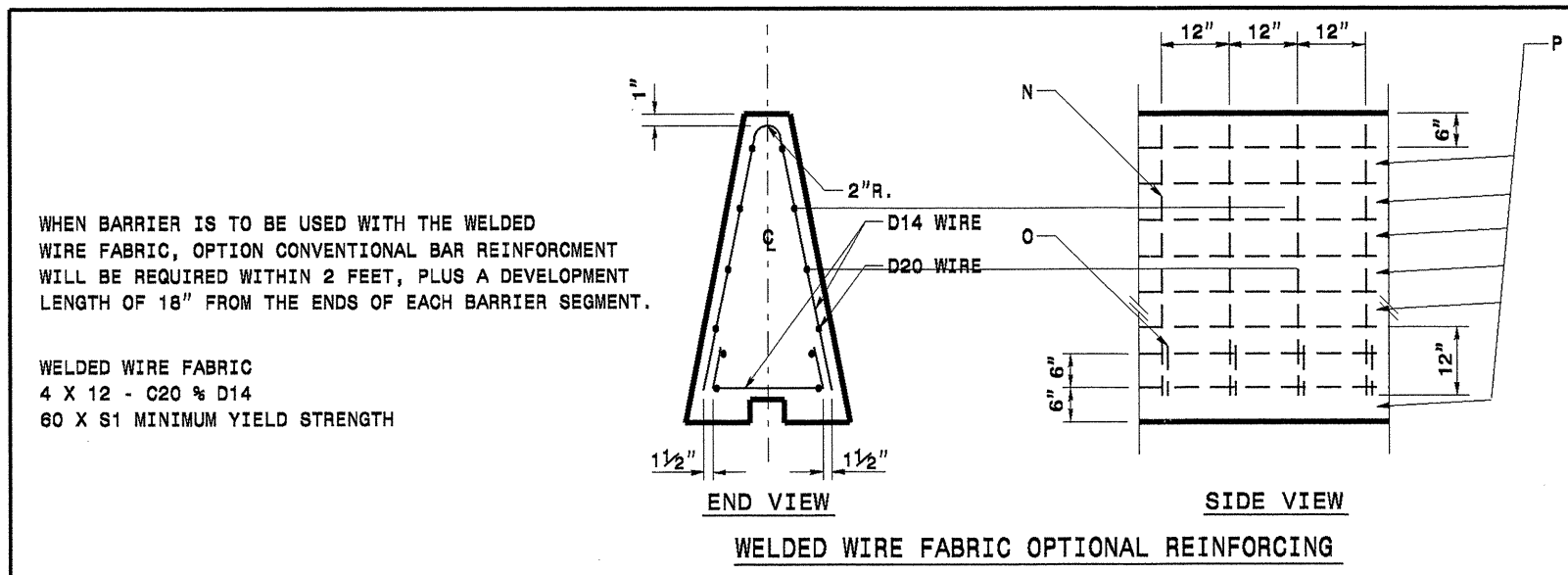
#4-'V1' BAR REINFORCING DETAIL



GENERAL NOTES:

1. USE CLASS "AA" CONCRETE.
2. CHAMFER TOP AND ENDS OF BARRIER 1/2 INCH.
3. USE BAR SPLICE LENGTHS A MINIMUM OF 20 TIMES THE NORMAL DIAMETER OF THE BAR. ANY METHOD DEvised BY THE CONTRACTOR AND APPROVED BY THE ENGINEER THAT WILL ASSURE THE LONGITUDINAL ROADWAY STEEL WILL BE POSITIONED +/- 1/2 INCH AS DIMENSIONED WILL BE SATISFACTORY.

WELDED WIRE FABRIC MAY BE USED AS AN OPTION TO CONVENTIONAL REINFORCEMENT FOR CAST-IN-PLACE BARRIER. WELDED WIRE FABRIC SHALL BE MADE IN ACCORDANCE WITH ASTM A497. CONDUIT TO BE PROVIDED ONLY WHEN CALLED FOR ELSEWHERE IN THE PLANS. POSITION OF THE CONDUIT CONDUIT PASSAGEWAY MAY BE ADJUSTED TO FACILITATE CONSTRUCTION, SUBJECT TO APPROVAL BY THE ENGINEER.
4. A 36 INCH MINIMUM HEIGHT DIFFERENTIAL BETWEEN TOP OF BARRIER AND TOP OF PAVEMENT SHALL BE REQUIRED AT PLACEMENT IN ORDER TO ALLOW FOR UP TO 6 INCHES OF FUTURE OVERLAYS WHILE MAINTAINING A 30 INCH MINIMUM FUTURE EFFECTIVE HEIGHT OF BARRIER. TOTAL MINIMAL BARRIER HEIGHT FOR DESIGN IS THEREFORE DICTATED BY ALLOWANCE FOR FUTURE OVERLAYS PLUS EXISTING STAIRSTEP DIMENSION (VARIABLE). DIMENSIONS TYPICALLY ROUNDED TO 42 INCHES, 48 INCHES OR 54 INCHES TO FACILITATE PRECASTING.
5. REFER TO ROADWAY STANDARD DRAWING NO.854.01 FOR EXPANSION AND CONTRACTION JOINT, FILLER AND OTHER SPECIFICATIONS.



WHEN BARRIER IS TO BE USED WITH THE WELDED WIRE FABRIC, OPTION CONVENTIONAL BAR REINFORCEMENT WILL BE REQUIRED WITHIN 2 FEET, PLUS A DEVELOPMENT LENGTH OF 18" FROM THE ENDS OF EACH BARRIER SEGMENT.

WELDED WIRE FABRIC
4 X 12 - C20 % D14
60 X S1 MINIMUM YIELD STRENGTH

BARRIER HEIGHT (IN.)	DIMENSIONS											
	A	B	D	E	F	G	K	L	M	N	O	P
42"	42	24	13 1/2	21	28 1/2	36	15	9 1/4	36	72	28	4
48"	48	26 9/32	15	24	33	42	17 1/2	10 3/4	42	84	31 1/2	5
52"	54	28 9/16	16 1/2	27	37 1/2	48	19 1/2	12 1/4	48	96	34 3/4	6

CONTRACT SERVICES & DEVELOPMENT UNIT
STANDARDS AND SPECIAL DESIGN
Office 919-707-6960 FAX 919-260-4119

SINGLE SLOPE CONCRETE BARRIER

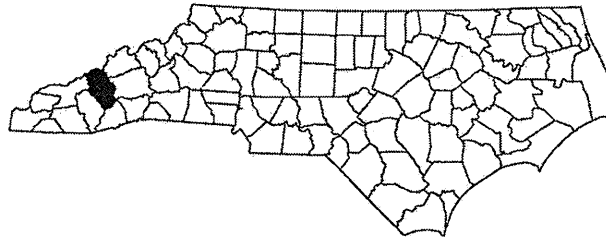
ORIGINAL BY: _____ DATE: _____
MODIFIED BY: rnbritt DATE: 08-18-08
CHECKED BY: _____ DATE: _____
FILE SPEC: c:\stata\mbr\std\eng\std\single\single.spc

Professional Engineer Seal
SEAL 022966
10/29/13

STATE OF NORTH CAROLINA
DIVISION OF HIGHWAYS

TRANSPORTATION MANAGEMENT PLAN

HAYWOOD COUNTY

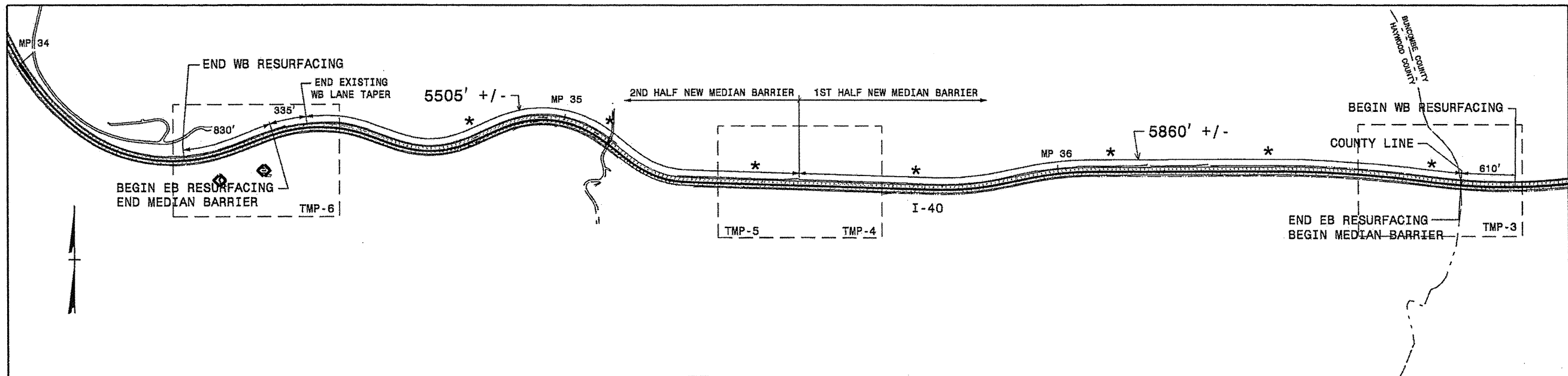


INDEX OF SHEETS

SHEET NO.	TITLE
TMP-1	TITLE SHEET, PROJECT OVERVIEW AND INDEX OF SHEETS
TMP-1A	LIST OF APPLICABLE ROADWAY STANDARD DRAWINGS, LEGEND AND TEMPORARY PAVEMENT MARKING/MARKER SCHEDULE
TMP-1B & TMP-1C	TRANSPORTATION OPERATIONS PLAN: (MANAGEMENT STRATEGIES, GENERAL NOTES AND LOCAL NOTES)
TMP-2	PHASING
TMP-3	PHASE I, STEP 3; PHASE II, STEP 1 - DETAILS
TMP-4	PHASE I, STEP 3; PHASE II, STEP 1 - DETAILS
TMP-5	PHASE II, STEPS 3 & 4 - DETAILS
TMP-6	PHASE II, STEPS 3 & 4 - DETAILS

SHEET NO.
TMP-1

I-5323

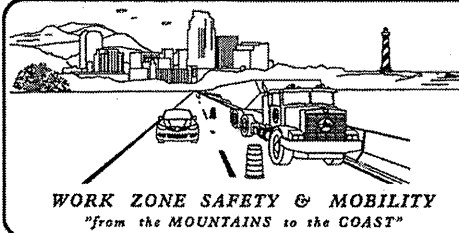


PROJECT OVERVIEW

LEGEND

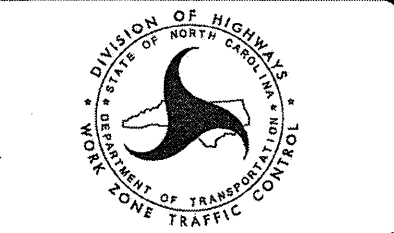
* - DENOTES "NO TRUCKS THIS LANE" PAVEMENT MARKING IN LEFT LANE

10-SEP-2013 10:01 AM
C:\DOT\DESIGN\GROUPS-WZ\TCCC\TMU\WZ\TC\CCC\TCCC\TMU\WZ\TC\Design\Group3\Squad3B\Special Projects\I-5323\TCP\TMP-1.dgn
kbr:edwell AT 12:26:00



N.C.D.O.T. WORK ZONE TRAFFIC CONTROL
1561 MAIL SERVICE CENTER (MSC) RALEIGH, NC 27699-1561
150 N. GREENFIELD PARKWAY, GARNER, NC 27529 (DELIVERY)
PHONE: (919) 773-2800 FAX: (919) 771-2745

J. S. BOURNE, P.E. STATE TRAFFIC MANAGEMENT ENGINEER
G. L. GETTIER, P.E. TRAFFIC CONTROL PROJECT ENGINEER
JESSE W. GILSTRAP TRAFFIC CONTROL PROJECT DESIGN ENGINEER
KEN BROADWELL TRAFFIC CONTROL DESIGN ENGINEER



APPROVED: _____
DATE: _____

SEAL

TIP PROJECT:

ROADWAY STANDARD DRAWINGS

THE FOLLOWING ROADWAY STANDARDS AS SHOWN IN "ROADWAY STANDARD DRAWINGS" - PROJECT SERVICES UNIT - N.C. DEPARTMENT OF TRANSPORTATION - RALEIGH, N.C., DATED JANUARY 2012 ARE APPLICABLE TO THIS PROJECT AND BY REFERENCE HEREBY ARE CONSIDERED A PART OF THESE PLANS:

<u>STD. NO.</u>	<u>TITLE</u>
1101.01	WORK ZONE ADVANCE WARNING SIGNS
1101.02	TEMPORARY LANE CLOSURES
1101.04	TEMPORARY SHOULDER CLOSURES
1101.05	WORK ZONE VEHICLE ACCESSES
1101.11	TRAFFIC CONTROL DESIGN TABLES
1110.01	STATIONARY WORK ZONE SIGNS
1110.02	PORTABLE WORK ZONE SIGNS
1115.01	FLASHING ARROW BOARDS
1130.01	DRUM
1160.01	TEMPORARY CRASH CUSHION - REFLECTIVE END TREATMENT
1165.01	WORK VEHICLE LIGHTING SYSTEMS AND TMA DELINEATION
1170.01	POSITIVE PROTECTION
1205.01	PAVEMENT MARKINGS - LINE TYPES AND OFFSETS
1205.02	PAVEMENT MARKINGS - TWO LANE AND MULTI-LANE ROADWAYS
1205.08	PAVEMENT MARKINGS - SYMBOLS AND WORD MESSAGES
1250.01	RAISED PAVEMENT MARKERS - INSTALLATION SPACING
1251.01	RAISED PAVEMENT MARKERS - PERMANENT AND TEMPORARY
1261.01	GUARDRAIL AND BARRIER DELINEATORS - INSTALLATION SPACING
1261.02	GUARDRAIL AND BARRIER DELINEATOR - TYPES AND MOUNTING

LEGEND

GENERAL

- DIRECTION OF TRAFFIC FLOW
- EXIST. PVMT.
- NORTH ARROW
- PROPOSED PVMT.
- WORK AREA

TRAFFIC CONTROL DEVICES

- DRUM
- TEMPORARY CRASH CUSHION
- FLASHING ARROW PANEL (TYPE C)
- LAW ENFORCEMENT
- TRUCK MOUNTED IMPACT ATTENUATOR (TMIA)
- CHANGEABLE MESSAGE SIGN

TEMPORARY SIGNING

- PORTABLE SIGN
- STATIONARY SIGN
- STATIONARY OR PORTABLE SIGN

TEMPORARY PAVEMENT MARKING / MARKER SCHEDULE

PAVEMENT MARKING - PAINT	
	WHITE EDGELINE (6")
	YELLOW EDGELINE (6")
	10 FT. WHITE SKIP (6")
	ALPHANUMERIC CHARACTER
	MERGE ARROW

PAVEMENT MARKER	
	CRYSTAL / RED TEMPORARY RAISED
	YELLOW / YELLOW TEMPORARY RAISED

21-OCT-2013 08:08
 \\dot\server\dot\proj\proj\projects\N5323\Traffic\TrafficControl\TCP\TMP-1.dgn
 kbroodwell AT 12:26:00

APPROVED: SEAL	DATE: <i>10 Oct 13</i>		ROADWAY STANDARD DRAWINGS & LEGEND
-------------------	------------------------	--	---

GENERAL NOTES

TRANSPORTATION OPERATIONS

CONSTRUCTION

MILLING, RESURFACING AND REPLACE EXISTING MEDIAN BARRIER.

TMP DESIGN PARAMETERS

LANE CLOSURES WILL BE UTILIZED TO MILL AND RESURFACE WESTBOUND TRAVEL LANES, SHOULDERS AND INSTALL TEMPORARY AND FINAL PAVEMENT MARKINGS AND MARKERS.

LANE CLOSURES WILL BE UTILIZED TO MILL AND RESURFACE THE EASTBOUND TRAVEL LANES, SHOULDERS AND INSTALL TEMPORARY AND FINAL PAVEMENT MARKINGS AND MARKERS.

THE MEDIAN BARRIER WILL BE REPLACED BEHIND PORTABLE CONCRETE BARRIER (WESTBOUND SIDE) AND UTILIZING LANE CLOSURES BEHIND ANCHORED PORTABLE CONCRETE BARRIER (EASTBOUND SIDE).

CHANGES MAY BE REQUIRED WHEN PHYSICAL DIMENSIONS IN THE DETAIL DRAWINGS, STANDARD DETAILS, AND ROADWAY DETAILS ARE NOT ATTAINABLE TO MEET FIELD CONDITIONS OR RESULT IN DUPLICATE OR UNDESIRABLE OVERLAPPING OF DEVICES. MODIFICATION MAY INCLUDE: MOVING, SUPPLEMENTING, COVERING, OR REMOVAL OF DEVICES AS DIRECTED BY THE ENGINEER.

THE FOLLOWING GENERAL NOTES APPLY AT ALL TIMES FOR THE DURATION OF THE CONSTRUCTION PROJECT EXCEPT WHEN OTHERWISE NOTED IN THE PLAN OR DIRECTED BY THE ENGINEER.

TIME RESTRICTIONS

A) DO NOT CLOSE OR NARROW TRAVEL LANES AS FOLLOWS:

ROAD NAME	DAY AND TIME RESTRICTIONS
ONE LANE ON I-40 EB AND ONE LANE IN TWO-LANE SECTION ON I-40 WB	MONDAY THRU SUNDAY 6:00AM - 8:00PM
TWO LANES IN THREE-LANE SECTION ON I-40 WB	MONDAY THRU SUNDAY 6:00AM - 10:00PM

B) DO NOT CLOSE OR NARROW TRAVEL LANES DURING HOLIDAYS AND SPECIAL EVENTS AS FOLLOWS:

ROAD NAME

I-40

HOLIDAY

- FOR ANY UNEXPECTED OCCURRENCE THAT CREATES UNUSUALLY HIGH TRAFFIC VOLUMES, AS DIRECTED BY THE ENGINEER.
- FOR NEW YEAR'S, BETWEEN THE HOURS OF 6:00 A.M. DECEMBER 31st TO 8:00 P.M. JANUARY 2ND. IF NEW YEAR'S DAY IS ON A FRIDAY, SATURDAY, SUNDAY, OR MONDAY THEN UNTIL 8:00 P.M. THE FOLLOWING TUESDAY.
- FOR EASTER, BETWEEN THE HOURS OF 6:00 A.M. THURSDAY AND 8:00 P.M. MONDAY.
- FOR MEMORIAL DAY, BETWEEN THE HOURS OF 6:00 A.M. FRIDAY TO 8:00 P.M. TUESDAY.
- FOR INDEPENDENCE DAY, BETWEEN THE HOURS OF 6:00 A.M. THE DAY BEFORE INDEPENDENCE DAY AND 8:00 P.M. THE DAY AFTER INDEPENDENCE DAY.

IF INDEPENDENCE DAY IS ON A FRIDAY, SATURDAY, SUNDAY OR MONDAY THEN BETWEEN THE HOURS OF 6:00 A.M. THE THURSDAY BEFORE INDEPENDENCE DAY AND 8:00 P.M. THE TUESDAY AFTER INDEPENDENCE DAY.
- FOR LABOR DAY, BETWEEN THE HOURS OF 6:00 A.M. FRIDAY AND 8:00 P.M. TUESDAY.
- FOR THANKSGIVING DAY, BETWEEN THE HOURS OF 6:00 A.M. TUESDAY TO 8:00 P.M. MONDAY.
- FOR CHRISTMAS, BETWEEN THE HOURS OF 6:00 A.M. THE FRIDAY BEFORE THE WEEK OF CHRISTMAS DAY AND 8:00 P.M. THE FOLLOWING TUESDAY AFTER THE WEEK OF CHRISTMAS.

C) DO NOT CLOSE ROADS AS FOLLOWS:

ROAD NAME	DAY AND TIME RESTRICTIONS
I-40	ANYTIME

D) DO NOT STOP TRAFFIC AS FOLLOWS:

ROAD NAME	DAY AND TIME RESTRICTIONS
I-40	ANYTIME

E) DO NOT CONDUCT ANY HAULING OPERATIONS AGAINST THE FLOW OF TRAFFIC OF AN OPEN TRAVELWAY UNLESS THE HAULING OPERATION IS PROTECTED BY BARRIER OR GUARDRAIL OR AS DIRECTED BY THE ENGINEER.

LANE AND SHOULDER CLOSURE REQUIREMENTS

- F) REMOVE LANE CLOSURE DEVICES FROM THE LANE WHEN WORK IS NOT BEING PERFORMED BEHIND THE LANE CLOSURE OR WHEN A LANE CLOSURE IS NO LONGER NEEDED OR AS DIRECTED BY THE ENGINEER.
- G) WHEN PERSONNEL AND/OR EQUIPMENT ARE WORKING WITHIN 15 FT OF AN OPEN TRAVEL LANE, CLOSE THE NEAREST OPEN SHOULDER USING ROADWAY STANDARD DRAWING NO. 1101.04 UNLESS THE WORK AREA IS PROTECTED BY BARRIER OR GUARDRAIL OR A LANE CLOSURE IS INSTALLED.
- H) WHEN PERSONNEL AND/OR EQUIPMENT ARE WORKING ON THE SHOULDER ADJACENT TO AN UNDIVIDED FACILITY AND WITHIN 5 FT OF AN OPEN TRAVEL LANE, CLOSE THE NEAREST OPEN TRAVEL LANE USING ROADWAY STANDARD DRAWING NO. 1101.02 UNLESS THE WORK AREA IS PROTECTED BY BARRIER OR GUARDRAIL.

WHEN PERSONNEL AND/OR EQUIPMENT ARE WORKING ON THE SHOULDER ADJACENT TO A DIVIDED FACILITY AND WITHIN 10 FT OF AN OPEN TRAVEL LANE, CLOSE THE NEAREST OPEN TRAVEL LANE USING ROADWAY STANDARD DRAWING NO. 1101.02 UNLESS THE WORK AREA IS PROTECTED BY BARRIER OR GUARDRAIL.

I) WHEN PERSONNEL AND/OR EQUIPMENT ARE WORKING WITHIN A LANE OF TRAVEL OF AN UNDIVIDED OR DIVIDED FACILITY, CLOSE THE LANE ACCORDING TO THE TRAFFIC CONTROL PLANS, ROADWAY STANDARD DRAWINGS, OR AS DIRECTED BY THE ENGINEER. CONDUCT THE WORK SO THAT ALL PERSONNEL AND/OR EQUIPMENT REMAIN WITHIN THE CLOSED TRAVEL LANE.

J) PROVIDE TRAFFIC CONTROL FOR APPROPRIATE LANE CLOSURES FOR SURVEYING DONE BY THE DEPARTMENT.

PAVEMENT EDGE DROP OFF REQUIREMENTS

K) BACKFILL AT A 6:1 SLOPE UP TO THE EDGE AND ELEVATION OF EXISTING PAVEMENT IN AREAS ADJACENT TO AN OPENED TRAVEL LANE THAT HAS AN EDGE OF PAVEMENT DROP-OFF AS FOLLOWS:

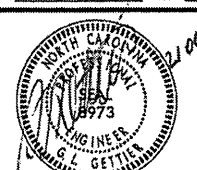

BACKFILL DROP-OFFS THAT EXCEED 2 INCHES ON ROADWAYS WITH POSTED SPEED LIMITS OF 45 MPH OR GREATER.

BACKFILL DROP-OFFS THAT EXCEED 3 INCHES ON ROADWAYS WITH POSTED SPEED LIMITS LESS THAN 45 MPH.

BACKFILL WITH SUITABLE COMPACTED MATERIAL, AS APPROVED BY THE ENGINEER, AT NO EXPENSE TO THE DEPARTMENT.

L) DO NOT EXCEED A DIFFERENCE OF 2 INCHES IN ELEVATION BETWEEN OPEN LANES OF TRAFFIC FOR NOMINAL LIFTS OF 1.5 INCHES. INSTALL ADVANCE WARNING "UNEVEN LANES" SIGNS (W8-11) (1000 FT) IN ADVANCE AND A MINIMUM OF ONCE EVERY HALF MILE THROUGHOUT THE UNEVEN AREA.

21-OCT-2013 08:08 \\dot\dfs\root\Projects\N5323\TrafficControl\TCP\TMP-1.dgn Kbroodwell AT TE266004

APPROVED: _____	DATE: _____			<h2>TRANSPORTATION OPERATIONS & PROJECT NOTES</h2>
-----------------	-------------	---	---	--

GENERAL NOTES

TRAFFIC PATTERN ALTERATIONS

- M) NOTIFY THE ENGINEER TWENTY ONE (21) CALENDAR DAYS PRIOR TO ANY TRAFFIC PATTERN ALTERATION.

SIGNING

- N) INSTALL ADVANCE WORK ZONE WARNING SIGNS WHEN WORK IS WITHIN 40 FT FROM THE EDGE OF TRAVEL LANE AND NO MORE THAN THREE (3) DAYS PRIOR TO THE BEGINNING OF CONSTRUCTION.
- O) ENSURE ALL NECESSARY SIGNING IS IN PLACE PRIOR TO ALTERING ANY TRAFFIC PATTERN.

TRAFFIC BARRIER

- P) INSTALL TEMPORARY BARRIER ACCORDING TO THE TRANSPORTATION MANAGEMENT PLANS A MAXIMUM OF TWO (2) WEEKS PRIOR TO BEGINNING WORK IN ANY LOCATION. ONCE TEMPORARY BARRIER IS INSTALLED AT ANY LOCATION PROCEED IN A CONTINUOUS MANNER TO COMPLETE THE PROPOSED WORK IN THAT LOCATION UNLESS OTHERWISE STATED IN THE TRANSPORTATION MANAGEMENT PLANS OR AS DIRECTED BY THE ENGINEER.

DO NOT PLACE BARRIER DIRECTLY ON ANY SURFACE OTHER THAN ASPHALT OR CONCRETE.

ONCE TEMPORARY BARRIER IS INSTALLED AT ANY LOCATION AND NO WORK IS PERFORMED BEHIND THE TEMPORARY BARRIER FOR A PERIOD LONGER THAN TWO (2) MONTHS, REMOVE / RESET TEMPORARY BARRIER AT NO COST TO THE DEPARTMENT UNLESS OTHERWISE STATED IN THE TRANSPORTATION MANAGEMENT PLANS, TEMPORARY BARRIER IS PROTECTING A HAZARD, OR AS DIRECTED BY THE ENGINEER.

INSTALL TEMPORARY BARRIER WITH THE TRAFFIC FLOW BEGINNING WITH THE UPSTREAM SIDE OF TRAFFIC. REMOVE TEMPORARY BARRIER AGAINST THE TRAFFIC FLOW BEGINNING WITH THE DOWNSTREAM SIDE OF TRAFFIC.

INSTALL AND SPACE DRUMS NO GREATER THAN TWICE THE POSTED SPEED LIMIT (MPH) TO CLOSE OR KEEP THE SECTION OF THE ROADWAY CLOSED UNTIL THE TEMPORARY BARRIER CAN BE PLACED OR AFTER THE TEMPORARY BARRIER IS REMOVED.

- Q) PROTECT THE APPROACH END OF MOVABLE/PORTABLE CONCRETE BARRIER AT ALL TIMES DURING THE INSTALLATION AND REMOVAL OF THE BARRIER BY EITHER A TRUCK MOUNTED ATTENUATOR (MAXIMUM 72 HOURS) OR A TEMPORARY CRASH CUSHION.

PROTECT THE APPROACH END OF MOVABLE/PORTABLE CONCRETE BARRIER FROM ONCOMING TRAFFIC AT ALL TIMES BY A TEMPORARY CRASH CUSHION UNLESS THE APPROACH END OF MOVABLE/PORTABLE CONCRETE BARRIER IS OFFSET FROM ONCOMING TRAFFIC AS FOLLOWS OR AS SHOWN IN THE PLANS: (SEE ALSO 1101.05)

<u>POSTED SPEED LIMIT</u>	<u>MINIMUM OFFSET</u>
40 OR LESS	15 FT
45 - 50	20 FT
55	25 FT
60 MPH or HIGHER	30 FT

TRAFFIC CONTROL DEVICES

- R) WHEN LANE CLOSURES ARE NOT IN EFFECT SPACE CHANNELIZING DEVICES IN WORK AREAS NO GREATER IN FEET THAN TWICE THE POSTED SPEED LIMIT (MPH) EXCEPT, 10 FT ON-CENTER IN RADIUS, AND 3 FT OFF THE EDGE OF AN OPEN TRAVELWAY. REFER TO STANDARD SPECIFICATIONS FOR ROADS AND STRUCTURES SECTIONS 1130 (DRUMS), 1135 (CONES) AND 1180 (SKINNY DRUMS) FOR ADDITIONAL REQUIREMENTS.

NOTE: SKINNY DRUMS AND CONES ARE NOT TO BE UTILIZED ON THIS PROJECT.

- S) PLACE ADDITIONAL SETS OF THREE CHANNELIZING DEVICES (DRUMS) PERPENDICULAR TO THE EDGE OF TRAVELWAY ON 500 FT CENTERS WHEN UNOPENED LANES ARE CLOSED TO TRAFFIC.

PAVEMENT MARKINGS AND MARKERS

- T) INSTALL TEMPORARY PAVEMENT MARKINGS AND TEMPORARY PAVEMENT MARKERS ON INTERIM LAYERS OF PAVEMENT AS FOLLOWS:

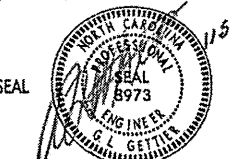

<u>ROAD NAME</u>	<u>MARKING</u>	<u>MARKER</u>
I-40	PAINT	TEMPORARY RAISED

- U) PLACE ONE APPLICATION OF PAINT FOR TEMPORARY TRAFFIC PATTERNS. PLACE A SECOND APPLICATION OF PAINT SIX (6) MONTHS AFTER THE INITIAL APPLICATION AND EVERY SIX MONTHS AS DIRECTED BY THE ENGINEER.
- V) TIE PROPOSED PAVEMENT MARKING LINES TO EXISTING PAVEMENT MARKING LINES.
- W) REMOVE/REPLACE ANY CONFLICTING/DAMAGED PAVEMENT MARKINGS AND MARKERS BY THE END OF EACH DAY'S OPERATION.
- X) RECORD EXISTING PAVEMENT MARKING CONFIGURATION PRIOR TO MARKING REMOVAL. THIS RECORD SHALL BE UTILIZED TO PLACE THE FINAL PAVEMENT MARKINGS.

MISCELLANEOUS

- Y) LAW ENFORCEMENT MAY BE USED TO MAINTAIN TRAFFIC THROUGH THE WORK AREA AS DIRECTED BY THE ENGINEER.

I:\0-SEP-2012\11002\10-SEP-2012\11002\GROUPS-WZTC\CC-TMUX\WZTC\Design\Group\Projects\I-5323\TCP\TMP-1C.dgn
K:\P\000001\A\12356804

APPROVED: 	DATE: 11-5-13		PROJECT NOTES
--	------------------	---	---------------

PHASING

PROJ. REFERENCE NO.	SHEET NO.
I-5323	TMP-2

PHASE I

STEP 1

THE CONTRACTOR SHALL INSTALL ADVANCE WORK ZONE WARNING SIGNS PER ROADWAY STANDARD DRAWING NUMBER 1101.01, SHEET 1 OF 3.

NOTE: THE CONTRACTOR SHALL RECORD EXISTING PAVEMENT MARKING LOCATIONS FOR FUTURE REFERENCE.

STEP 2

THE CONTRACTOR SHALL USING LANE CLOSURES PER ROADWAY STANDARD DRAWING NUMBER 1101.02, SHEETS 4 & 8 OF 15:

- REMOVE EXISTING SNOWPLOWABLE PAVEMENT MARKERS AND CONDUCT MILLING & RESURFACING OPERATIONS ON I-40 WESTBOUND TRAVEL LANES, AND INSIDE & OUTSIDE SHOULDERS UP TO, BUT NOT INCLUDING THE FINAL LAYER OF SURFACE COURSE (OPEN GRADED ASPHALT FRICTION COURSE) FOR THE ENTIRE LENGTH OF THE PROJECT AS SHOWN IN THE CONSTRUCTION PLANS.

NOTE: I-40 WESTBOUND DRAINAGE INLET GRATES SHALL BE RAISED IN A MANNER TO SUPPORT TRAFFIC AND ALLOW WATER TO DRAIN AT ALL TIMES AS DIRECTED BY THE ENGINEER.

- CONDUCT MILLING & RESURFACING OPERATIONS ON I-40 WESTBOUND OUTSIDE SHOULDER UP TO, BUT NOT INCLUDING THE FINAL LAYER OF SURFACE COURSE (OPEN GRADED ASPHALT FRICTION COURSE) AS SHOWN IN THE CONSTRUCTION PLANS.
- INSTALL I-40 WESTBOUND TEMPORARY PAVEMENT MARKINGS (WIDE PAINT), PAVEMENT MARKERS (TEMPORARY RAISED) IN THE EXISTING PATTERN FOR THE ENTIRE LENGTH OF THE PROJECT.

STEP 3

THE CONTRACTOR SHALL USING LANE CLOSURES PER ROADWAY STANDARD DRAWING NUMBER 1101.02, SHEETS 4 & 8 OF 15:

- RESTRIPE I-40 WESTBOUND AND EASTBOUND PAVEMENT MARKINGS (WIDE PAINT) AND TEMPORARY RAISED PAVEMENT MARKERS (TEMPORARY RAISED) IN THE TEMPORARY PATTERNS FOR THE EASTERN HALF OF THE PROJECT (TEMPORARY RAISED PAVEMENT MARKERS SHALL BE SPACED AT 20' IN SHIFT TAPERS AND 40' AT TANGENT SECTIONS). INSTALL ASSOCIATED WARNING SIGNS AND OPEN TO THE TEMPORARY TRAFFIC PATTERNS (SEE SHEETS TMP-3 AND TMP-4).

NOTE: REMOVE REFLECTIVE LENSES FROM EXISTING SNOWPLOWABLE PAVEMENT MARKERS ON I-40 EASTBOUND TO ELIMINATE CONFLICT WITH TEMPORARY PATTERN.

- INSTALL I-40 WESTBOUND PORTABLE CONCRETE BARRIER AND EASTBOUND ANCHORED PORTABLE CONCRETE BARRIER FOR THE EASTERN HALF OF THE PROJECT (SEE SHEETS TMP-3 AND TMP-4).

PHASE II

STEP 1

THE CONTRACTOR SHALL CONSTRUCT THE EASTERN HALF OF THE PROPOSED MEDIAN BARRIER AS SHOWN ON SHEETS TMP-3 AND TMP-4.

NOTE: CONTRACTOR SHALL CLOSE THE I-40 EASTBOUND INSIDE LANE FOR ALL MEDIAN BARRIER WORK PERFORMED BEHIND THE ANCHORED PORTABLE CONCRETE BARRIER.

STEP 2

THE CONTRACTOR SHALL USING LANE CLOSURES PER ROADWAY STANDARD DRAWING NUMBER 1101.02, SHEETS 4 & 8 OF 15:

- REMOVE PCB FROM I-40 WESTBOUND AND ANCHORED PCB FROM I-40 EASTBOUND.
- RESTRIPE I-40 WESTBOUND AND EASTBOUND PAVEMENT MARKINGS (WIDE PAINT) AND TEMPORARY RAISED PAVEMENT MARKERS (TEMPORARY RAISED) TO THE EXISTING TRAFFIC PATTERN FOR THE EASTERN HALF OF THE PROJECT AND OPEN TO TRAFFIC.

STEP 3

THE CONTRACTOR SHALL USING LANE CLOSURES PER ROADWAY STANDARD DRAWING NUMBER 1101.02, SHEETS 4 & 8 OF 15:

- RESTRIPE I-40 WESTBOUND AND EASTBOUND PAVEMENT MARKINGS (WIDE PAINT) AND TEMPORARY RAISED PAVEMENT MARKERS (TEMPORARY RAISED) IN THE TEMPORARY PATTERNS FOR THE WESTERN HALF OF THE PROJECT (TEMPORARY RAISED PAVEMENT MARKERS SHALL BE SPACED AT 20' IN SHIFT TAPERS AND 40' AT TANGENT SECTIONS). INSTALL ASSOCIATED WARNING SIGNS AND OPEN TO THE TEMPORARY TRAFFIC PATTERNS (SEE SHEETS TMP-5 AND TMP-6).
- INSTALL I-40 WESTBOUND PORTABLE CONCRETE BARRIER AND EASTBOUND ANCHORED PORTABLE CONCRETE BARRIER FOR THE WESTERN HALF OF THE PROJECT (SEE SHEETS TMP-5 AND TMP-6).

STEP 4

THE CONTRACTOR SHALL CONSTRUCT THE WESTERN HALF OF THE PROPOSED MEDIAN BARRIER AS SHOWN ON SHEETS TMP-5 AND TMP-6.

NOTE: CONTRACTOR SHALL CLOSE THE I-40 EASTBOUND INSIDE LANE FOR ALL MEDIAN BARRIER WORK PERFORMED BEHIND THE ANCHORED PORTABLE CONCRETE BARRIER.

PHASE III

STEP 1

THE CONTRACTOR SHALL USING LANE CLOSURES PER ROADWAY STANDARD DRAWING NUMBER 1101.02, SHEETS 4 & 8 OF 15:

- REMOVE I-40 WESTBOUND PORTABLE CONCRETE BARRIER AND I-40 EASTBOUND ANCHORED PORTABLE CONCRETE BARRIER, RESTRIPE WESTERN HALF OF THE PROJECT BACK TO THE EXISTING TRAFFIC PATTERN USING PAINT PAVEMENT MARKINGS (WIDE PAINT) AND TEMPORARY RAISED PAVEMENT MARKERS AND OPEN TO EXISTING TRAFFIC PATTERN.

STEP 2

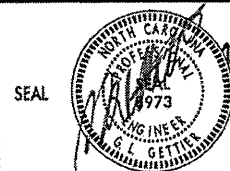
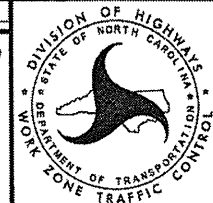
THE CONTRACTOR SHALL USING LANE CLOSURES PER ROADWAY STANDARD DRAWING NUMBER 1101.02, SHEETS 4 & 8 OF 15:

- MILL AND RESURFACE THE EXISTING FINAL LAYER (OGAFC) OF THE I-40 EASTBOUND LANES AND SHOULDERS FOR THE ENTIRE LENGTH OF THE PROJECT (SEE CONSTRUCTION PLANS). INSTALL FINAL PAVEMENT MARKINGS AND FINAL PAVEMENT MARKERS FOR THE FINAL TRAFFIC PATTERN AS SHOWN ON THE FINAL PAVEMENT MARKING PLANS.
- INSTALL THE FINAL LAYER OF SURFACE COURSE (OGAFC) ON I-40 WESTBOUND LANES AND SHOULDERS FOR THE ENTIRE LENGTH OF THE PROJECT (SEE CONSTRUCTION PLANS) AND INSTALL FINAL PAVEMENT MARKINGS AND FINAL PAVEMENT MARKERS FOR THE FINAL TRAFFIC PATTERN AS SHOWN ON THE FINAL PAVEMENT MARKING PLANS.
- INSTALL RUMBLE STRIPS ON THE I-40 WESTBOUND AND EASTBOUND INSIDE AND OUTSIDE SHOULDERS (SEE CONSTRUCTION PLANS).

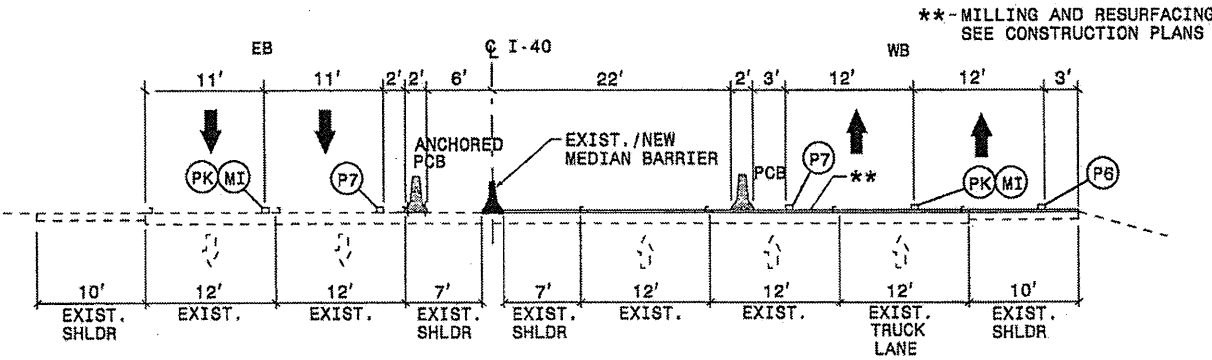
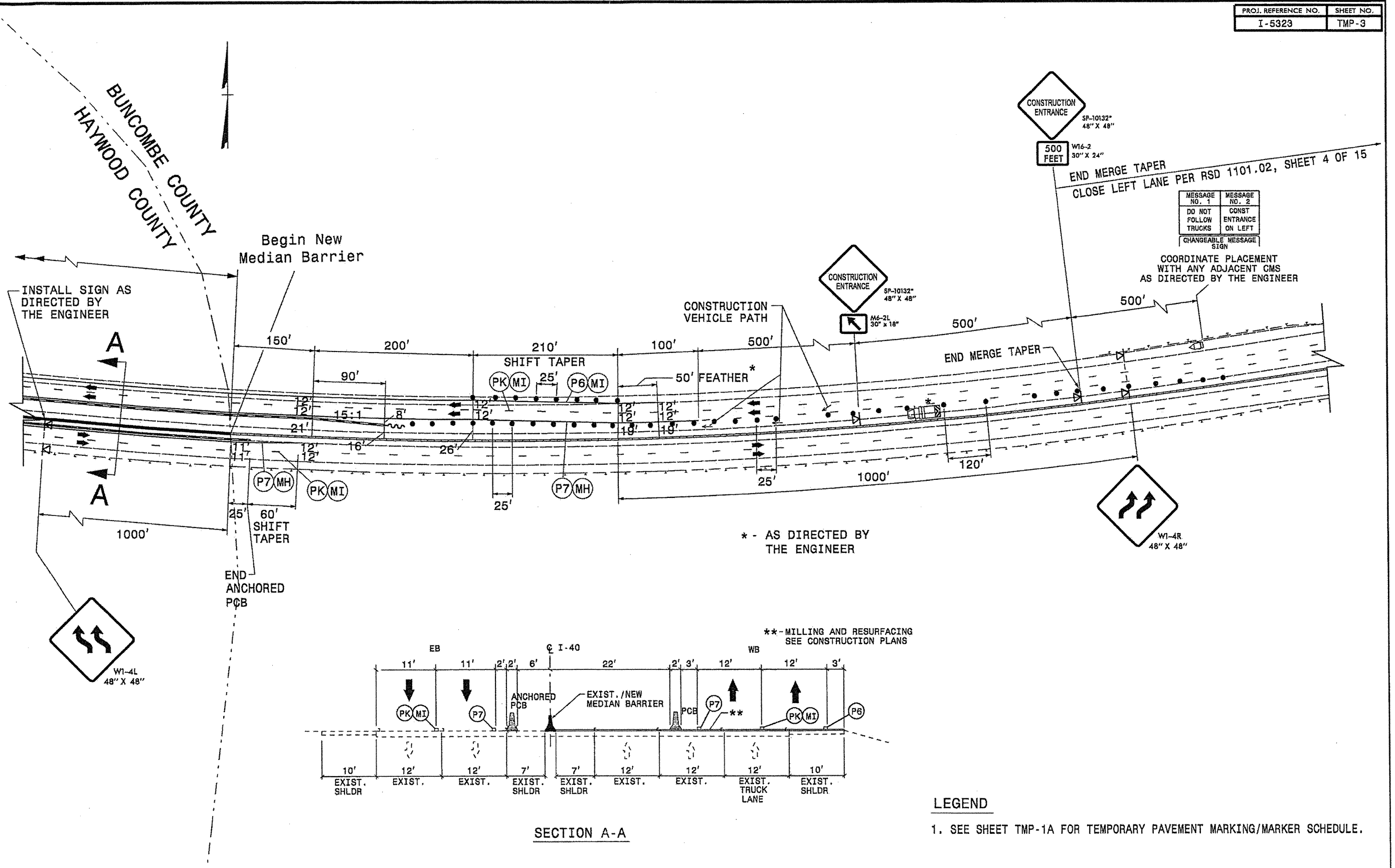
STEP 3

- THE CONTRACTOR SHALL REMOVE ALL TRAFFIC CONTROL DEVICES AND OPEN TO FINAL PATTERN.

21-0CT-2013 08:45
\\do\ofsr-00\ol\12265004\TrafficControl\TCP\TMP-1.dgn
R0000001 AT 12:26:50

APPROVED: _____ DATE: _____ 21 OCT 13			PHASING
---	---	---	---------

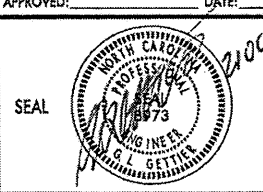

21-OCT-2013 08:10 \\dot\yfs\o\0101\Proj\TIP\Projects-I5323\TrafficControl\TCP\TMP-3.dgn
kbr\ocdwell AT 12:26:04

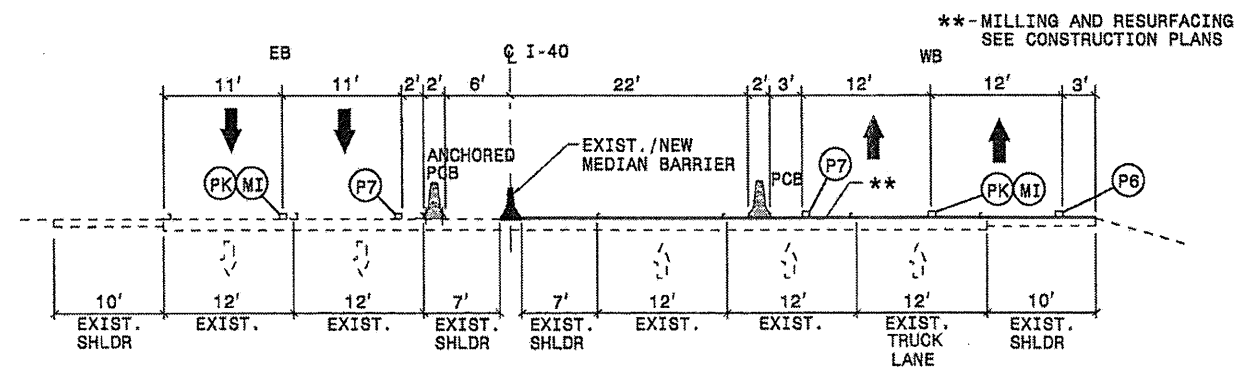
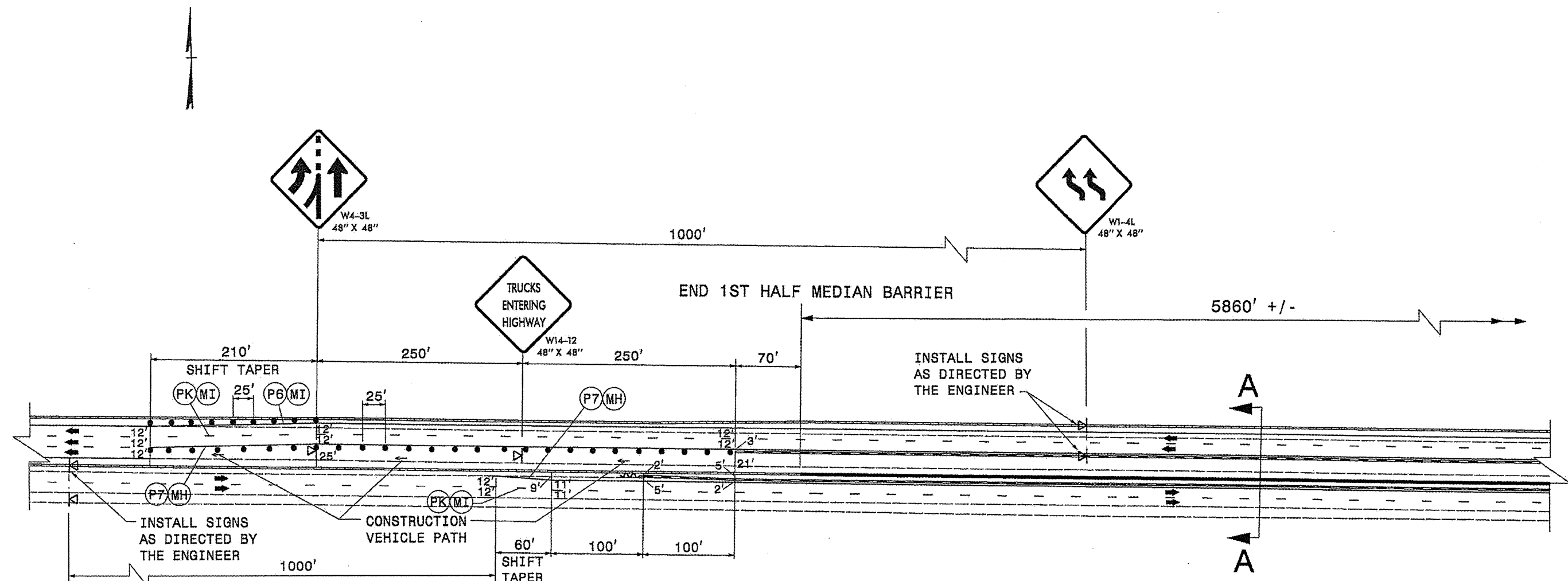


SECTION A-A

- LEGEND**
- PORTABLE CONC. BARRIER
 - PROP. MEDIAN CONC. BARRIER
 - EXIST. MEDIAN CONC. BARRIER

LEGEND
1. SEE SHEET TMP-1A FOR TEMPORARY PAVEMENT MARKING/MARKER SCHEDULE.

APPROVED:  DATE: 2/20/13		PHASE I, STEP 3; PHASE II, STEP 1 DETAILS
---	---	---



SECTION A-A

LEGEND

1. SEE SHEET TMP-1A FOR TEMPORARY PAVEMENT MARKING/MARKER SCHEDULE.

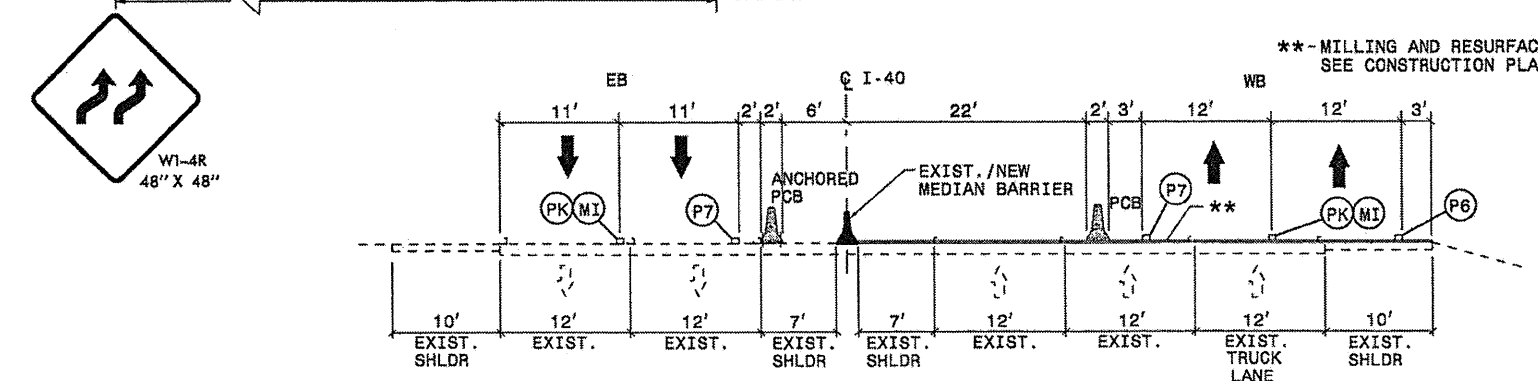
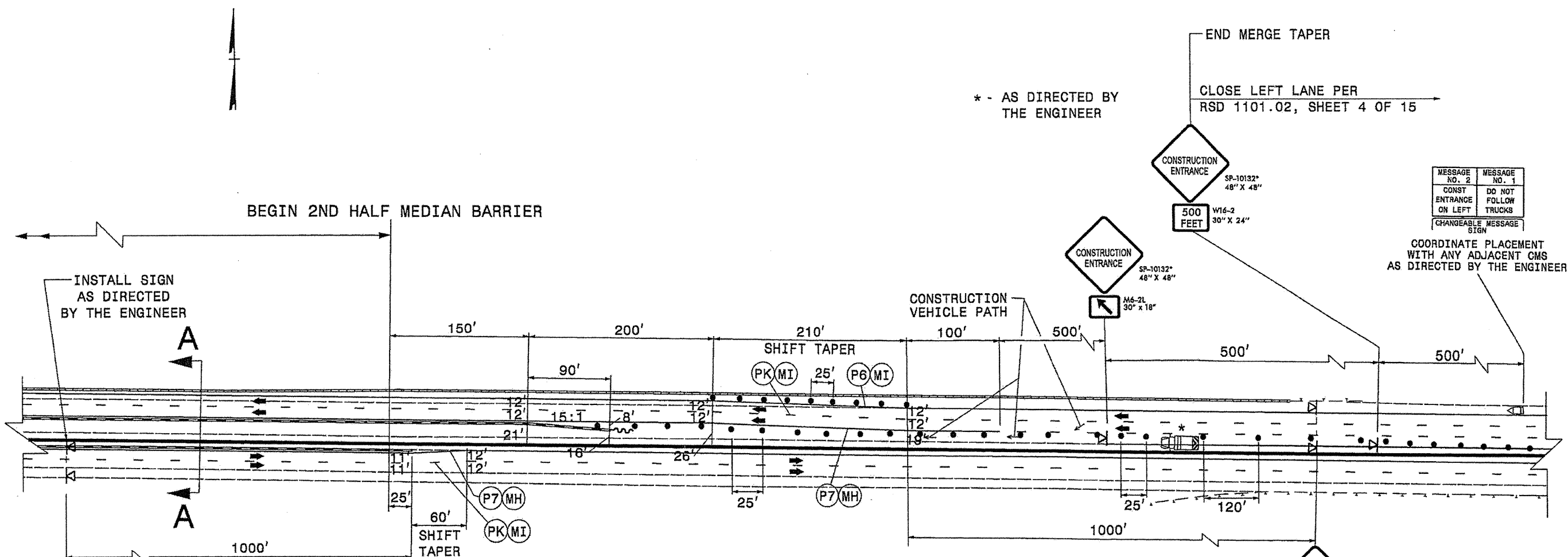
- LEGEND
- PORTABLE CONC. BARRIER
 - PROP. MEDIAN CONC. BARRIER
 - EXIST. MEDIAN CONC. BARRIER

APPROVED: _____ DATE: _____

SEAL

PHASE I, STEP 3;
PHASE II, STEP 1
DETAILS

21-OCT-2013 08:40 \\do\dfsrog\TIP\proj\I-5323\TrafficControl\TCPA\TMP-4.dgn KBR adawell AT 12:26:00



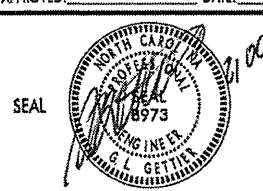
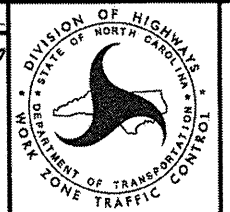
LEGEND

1. SEE SHEET TMP-1A FOR TEMPORARY PAVEMENT MARKING/MARKER SCHEDULE.

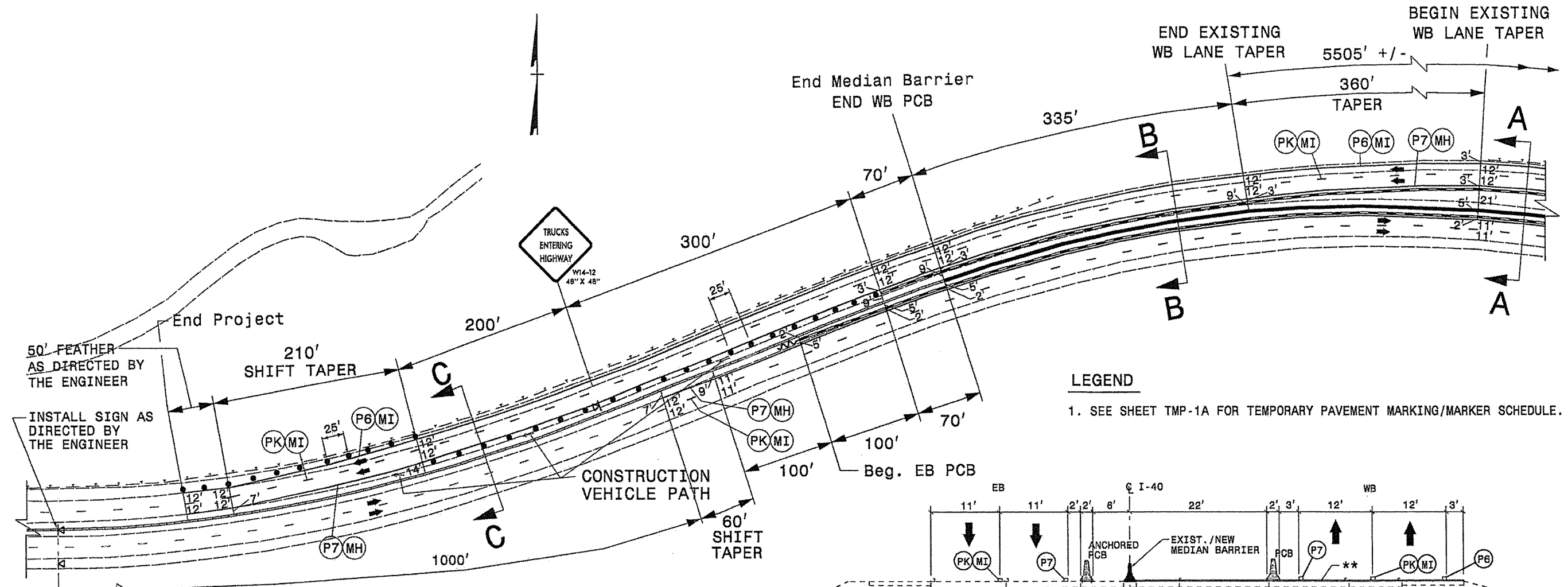
SECTION A-A

LEGEND

- PORTABLE CONC. BARRIER
- PROP. MEDIAN CONC. BARRIER
- EXIST. MEDIAN CONC. BARRIER

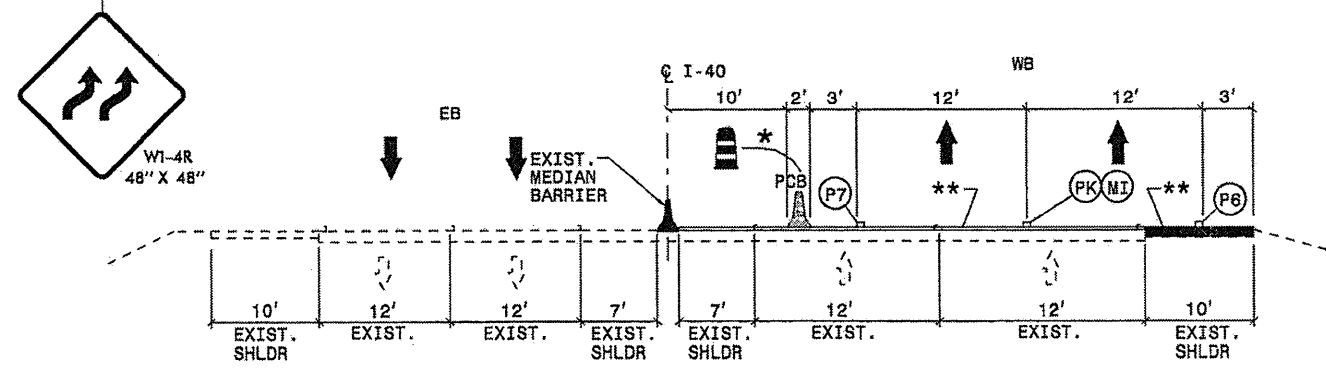
APPROVED:  DATE: 10/13/13		<p>PHASE II, STEPS 3 & 4 DETAILS</p>
--	---	--

21-OCT-2013 08:41
 C:\Users\jgoff\Documents\Projects\I-5323\TrafficControl\TCP\TMP-5.dgn
 10/13/13 10:41:13 AM



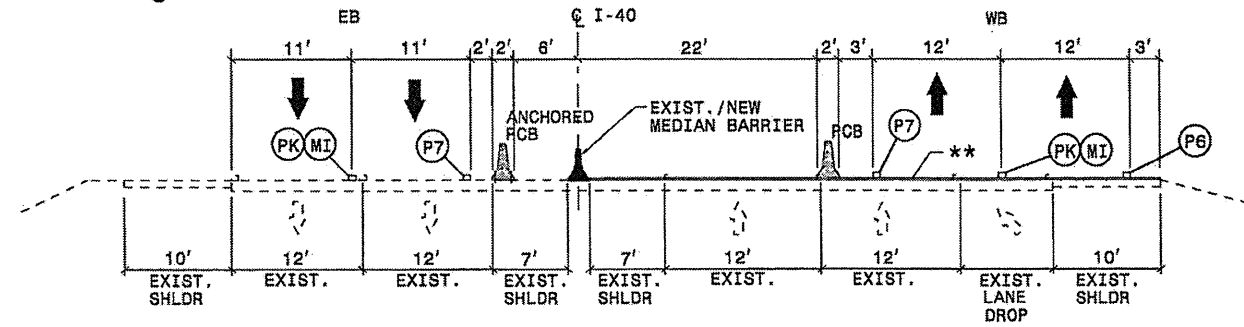
LEGEND

1. SEE SHEET TMP-1A FOR TEMPORARY PAVEMENT MARKING/MARKER SCHEDULE.



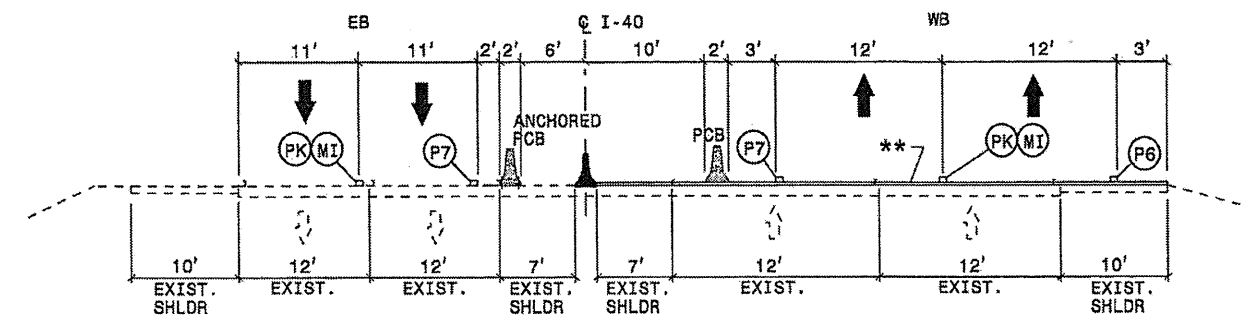
SECTION C-C

* - PCB OR DRUMS SEE PLAN



SECTION A-A

** - MILLING AND RESURFACING SEE CONSTRUCTION PLANS



SECTION B-B

LEGEND

- PORTABLE CONC. BARRIER
- PROP. MEDIAN CONC. BARRIER
- EXIST. MEDIAN CONC. BARRIER

APPROVED: _____ DATE: _____

SEAL

PHASE II, STEPS 3 & 4
DETAILS

21-OCT-2013 08:11 \\do\ndtsr\00\proj\TrafficControl\I-5323\TrafficControl\TMP-6.dgn

T.I.P.: I-5323

**STATE OF NORTH CAROLINA
DEPARTMENT OF TRANSPORTATION**

**PAVEMENT MARKING PLAN
HAYWOOD COUNTY**

TIP NO. I - 5323	SHEET NO. PMP - 1
APPROVED:	
DATE: 11/14/13	
SEAL	

ROADWAY STANDARD DRAWING

THE FOLLOWING ROADWAY STANDARDS AS APPEAR IN "ROADWAY STANDARD DRAWINGS" - PROJECT SERVICES UNIT - N.C. DEPARTMENT OF TRANSPORTATION - RALEIGH, N.C., DATED JANUARY 2012 ARE APPLICABLE TO THIS PROJECT AND BY REFERENCE HEREBY ARE CONSIDERED A PART OF THESE PLANS:

STD. NO.	TITLE
1205.01	PAVEMENT MARKINGS - LINE TYPES AND OFFSETS
1205.02	PAVEMENT MARKINGS - TWO-LANE AND MULTILANE ROADWAYS
1205.08	PAVEMENT MARKINGS - SYMBOLS AND WORD MESSAGES
1205.13	PAVEMENT MARKINGS - LANE REDUCTIONS
1250.01	RAISED PAVEMENT MARKERS - INSTALLATION SPACING
1253.01	RAISED PAVEMENT MARKERS - SNOWPLOWABLE
1261.01	GUARDRAIL AND BARRIER DELINEATORS - INSTALLATION SPACING
1261.02	GUARDRAIL AND BARRIER DELINEATORS - TYPES AND MOUNTING

GENERAL NOTES

THE FOLLOWING GENERAL NOTES APPLY AT ALL TIMES FOR THE DURATION OF THE CONSTRUCTION PROJECT, EXCEPT WHEN OTHERWISE NOTED IN THE PLAN, OR DIRECTED BY THE ENGINEER.

- A) INSTALL PAVEMENT MARKINGS AND PAVEMENT MARKERS ON THE FINAL SURFACE AS FOLLOWS:
- | ROAD NAME | MARKING | MARKER |
|-----------|---------------|--------------|
| I-40 | THERMOPLASTIC | SNOWPLOWABLE |
- B) TIE PROPOSED PAVEMENT MARKING LINES TO EXISTING PAVEMENT MARKING LINES.
- C) REMOVE/REPLACE ANY CONFLICTING/DAMAGED PAVEMENT MARKINGS AND MARKERS.
- D) UNLESS OTHERWISE SPECIFIED, HEATED-IN-PLACE THERMOPLASTIC MAY BE USED IN LIEU OF EXTRUDED THERMOPLASTIC FOR STOP BARS, SYMBOLS, CHARACTERS AND DIAGONALS. IF HEATED-IN-PLACE IS USED, IT SHALL BE PAID FOR USING THE EXTRUDED THERMOPLASTIC PAY ITEM.

**PAVEMENT MARKING
SCHEDULE**

SYMB	DESCRIPTION
	FINAL PAVEMENT MARKINGS
	<u>THERMOPLASTIC (6", 90 MILS)</u>
T6	WHITE EDGELINE
T7	YELLOW EDGELINE
	<u>THERMOPLASTIC (6", 120 MILS)</u>
TJ	10 FT. WHITE SKIP
TK	3 FT. - 9 FT./SP WHITE MINISKIP
	<u>THERMO PAVEMENT MARKING CHARACTER (120 MILS)</u>
UI	ALPHANUMERIC CHAR.
	<u>THERMO PAVEMENT MARKING SYMBOLS (90 MILS)</u>
UP	MERGE ARROW
	MARKERS
	<u>SNOWPLOWABLE RAISED PAVEMENT MARKERS</u>
MF	CRYSTAL & RED

INDEX

SHEET NO.	DESCRIPTION
PMP-1	PAVEMENT MARKING PLAN TITLE AND SCHEDULE SHEET
PMP-2	PAVEMENT MARKING DETAIL

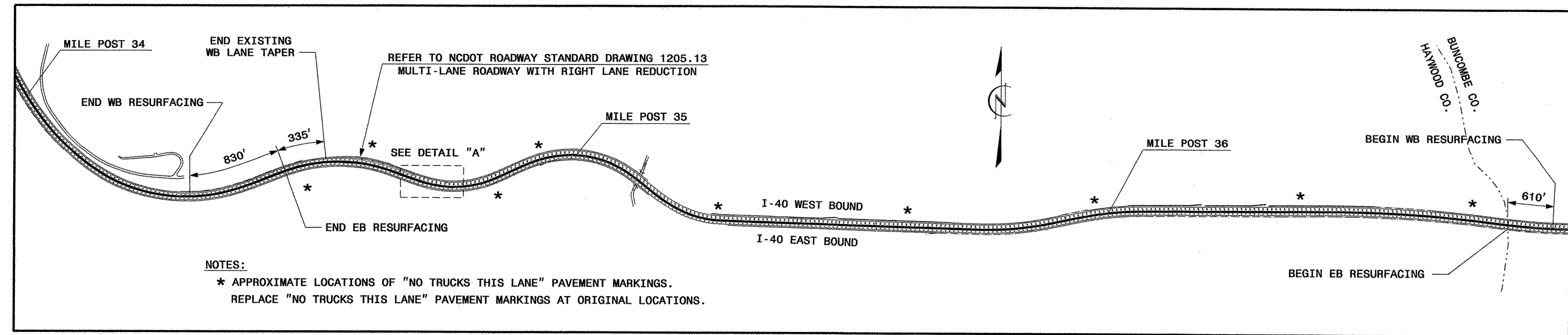
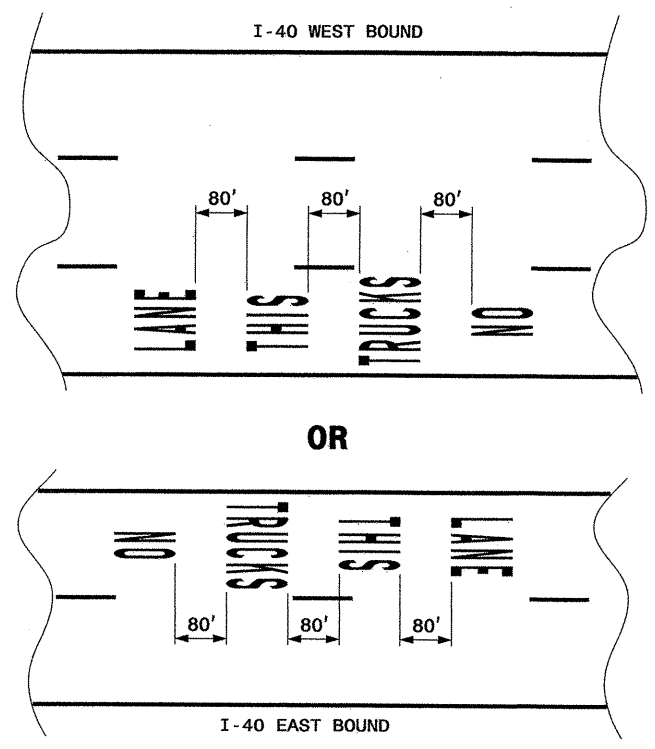
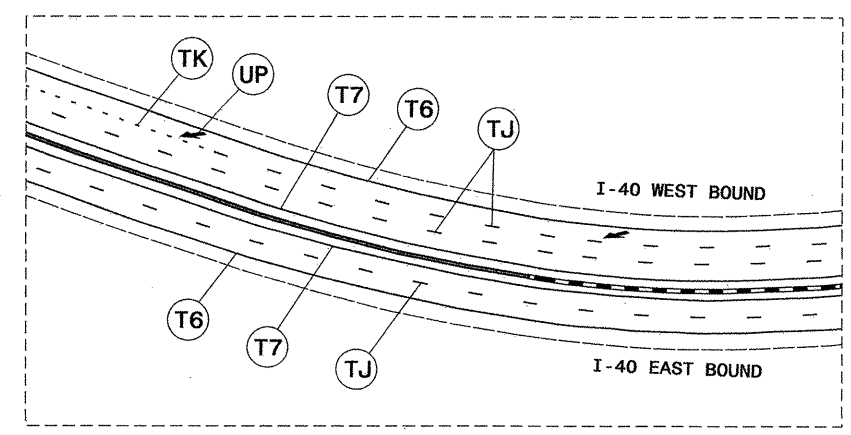
PLAN PREPARED BY: N.C.D.O.T. SIGNING AND DELINEATION UNIT

KELVIN L. JORDAN SIGNING & DELINEATION REGIONAL ENGINEER
DERRICK H. BEARD SIGNING & DELINEATION PROJECT DESIGN ENGINEER



TIP NO. I-5323	SHEET NO. PMP-2
APPROVED: <i>[Signature]</i>	DATE: 11/4/13
SEAL	

DETAIL "A"



NOTES:
 * APPROXIMATE LOCATIONS OF "NO TRUCKS THIS LANE" PAVEMENT MARKINGS.
 REPLACE "NO TRUCKS THIS LANE" PAVEMENT MARKINGS AT ORIGINAL LOCATIONS.

PAVEMENT MARKING DETAIL

04-NOV-2013 10:21
 g:\neec-signs\13-01250632
 01250632.dgn
 AT 12:53:32