

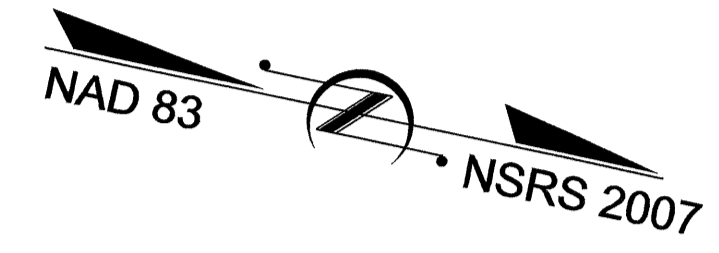
09/08/99

See Sheet 1-A For Index of Sheets  
See Sheet 1-B For Standard Symbology Sheet

T.I.P. NO.	SHEET NO.
B-2500A	UO-1

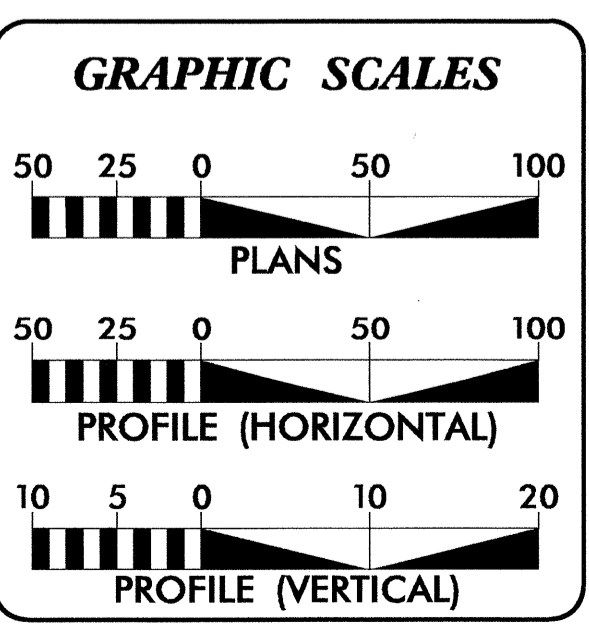
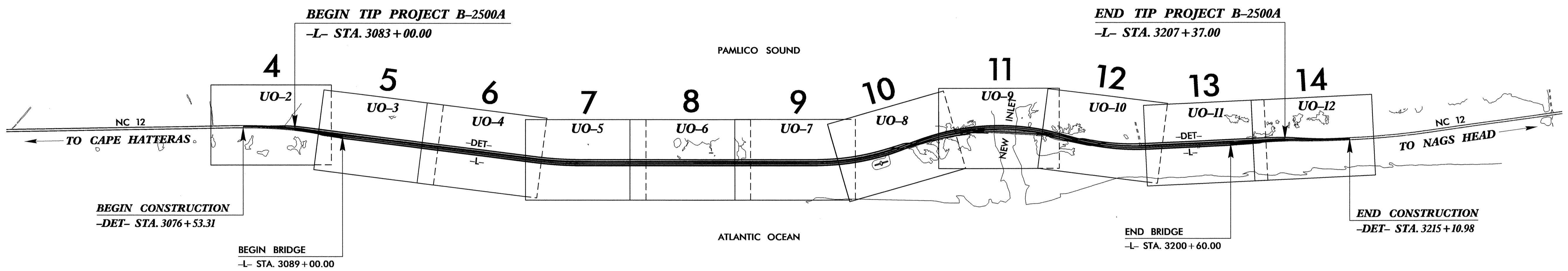
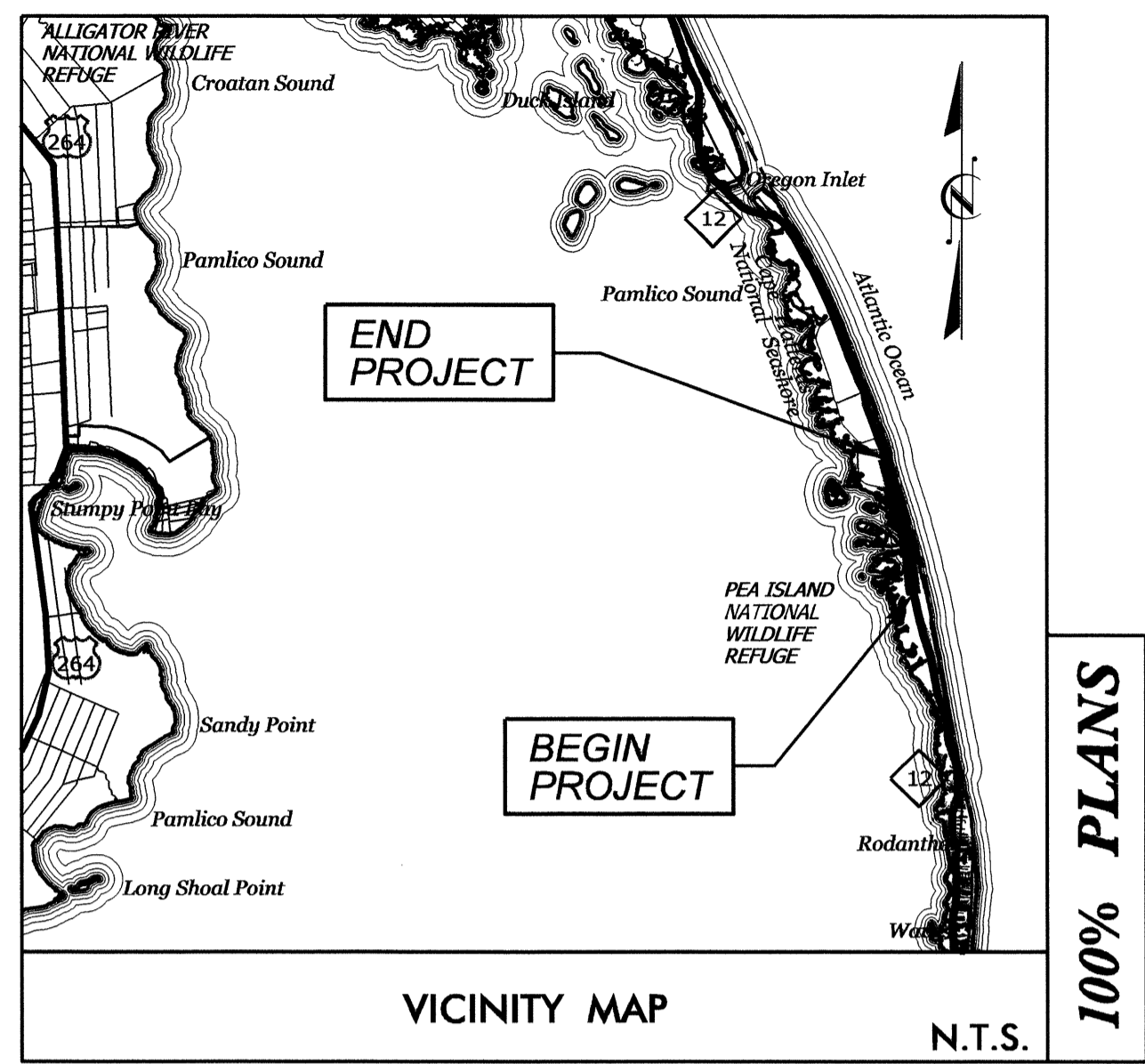
STATE OF NORTH CAROLINA  
DIVISION OF HIGHWAYS

**UTILITIES BY OTHERS PLANS  
DARE COUNTY**



**LOCATION: PHASE II, NC 12 LONG-TERM IMPROVEMENTS AT PEA ISLAND**  
**TYPE OF WORK: RELOCATION OF POWER AND TELEPHONE LINES**

**TIP PROJECT: B-2500A**



**INDEX OF SHEETS**

SHEET NO.	DESCRIPTION
UO-1	TITLE SHEET
UO-2 THRU UO-12	UTILITY BY OTHERS PLAN SHEETS

**UTILITY OWNERS ON PROJECT**

- (1) CAPE HATTERAS EMC (POWER)
- (2) CENTURYLINK (TELEPHONE)

PREPARED IN THE OFFICE OF:  
**DIVISION OF HIGHWAYS  
UTILITIES UNIT  
UTILITIES ENGINEERING**

1591 MAIL SERVICES CENTER  
RALEIGH NC 27699-1591  
PHONE (919) 707-6690  
FAX (919) 250-4151

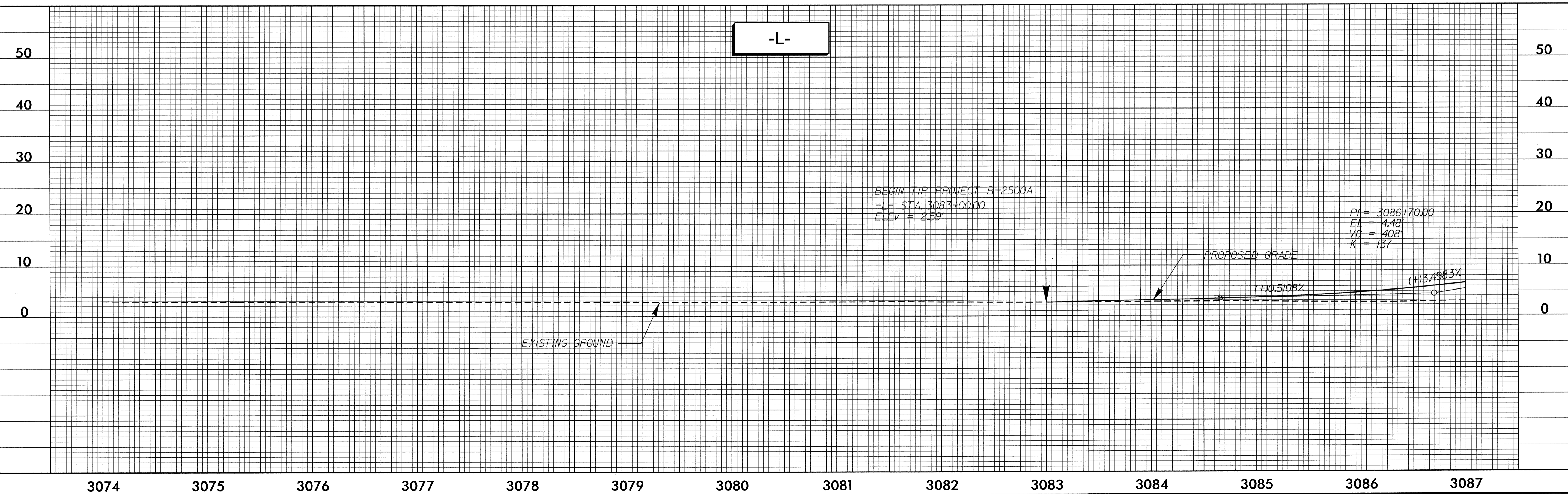
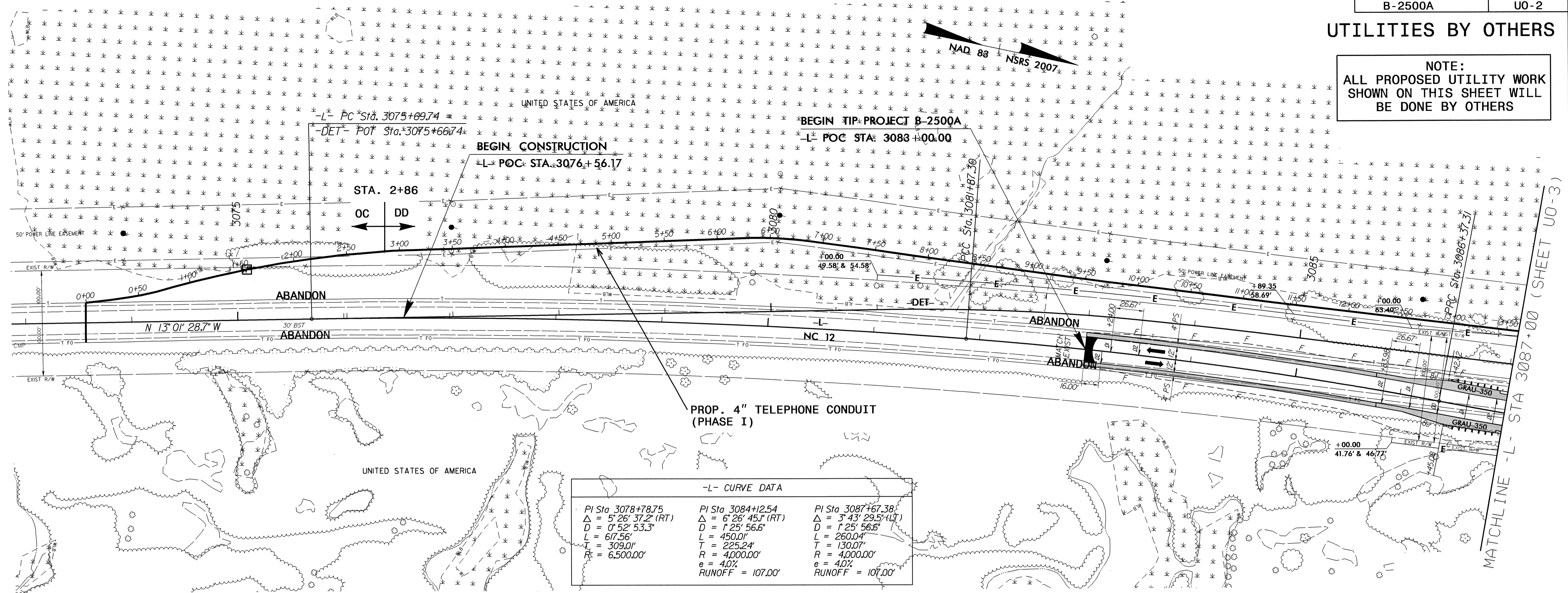
<b>Roger Worthington, P.E.</b>	UTILITIES SECTION ENGINEER
<b>Corey Bousquet, P.E.</b>	UTILITIES SQUAD LEADER PROJECT ENGINEER
<b>Christina Yokeley</b>	UTILITIES PROJECT DESIGNER

18-OCT-2012 10:20 R:\Utilities\RDY\_UH\Proj\NC12PEA.RDY\_TSH.dgn \$\$\$USERNAME\$\$\$

5/14/99

### UTILITIES BY OTHERS

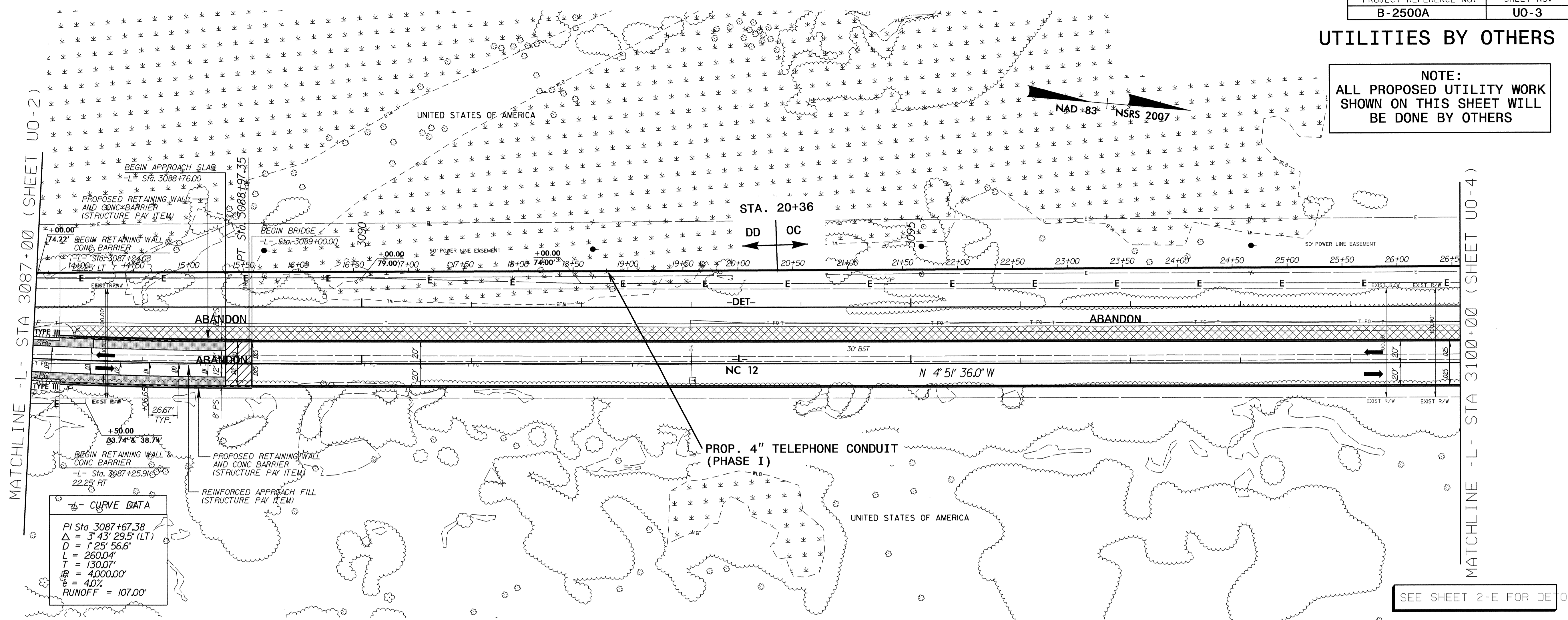
**NOTE:**  
ALL PROPOSED UTILITY WORK  
SHOWN ON THIS SHEET WILL  
BE DONE BY OTHERS



R:\0408-001-2012-0710-001\0408-001-2012-0710-001\0408-001-2012-0710-001.dgn

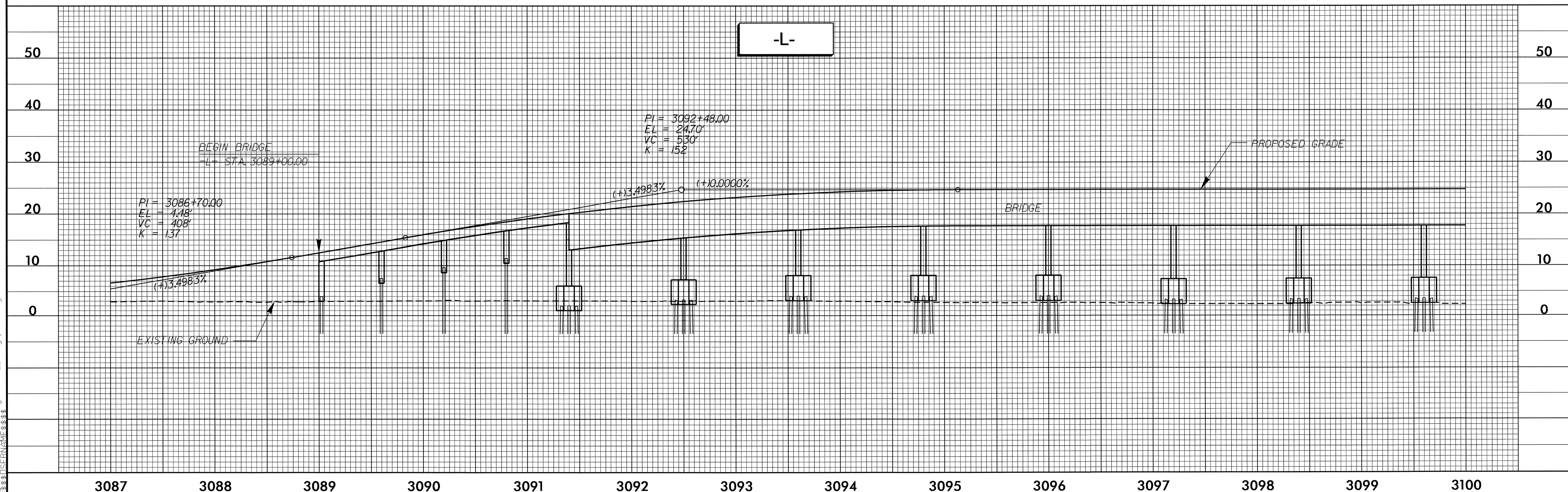
UTILITIES BY OTHERS

NOTE:  
ALL PROPOSED UTILITY WORK  
SHOWN ON THIS SHEET WILL  
BE DONE BY OTHERS



Curve Data

PI Sta	3087+67.38
$\Delta$	3° 43' 29.5" (LT)
D	125' 56.6"
L	260.04'
T	130.02'
R	4000.00'
e	4.0%
RUNOFF	= 107.00'



5/14/99 R:\001\01\2012\_07\10\00\1\NC\REF\00\dy-ps\05.dgn

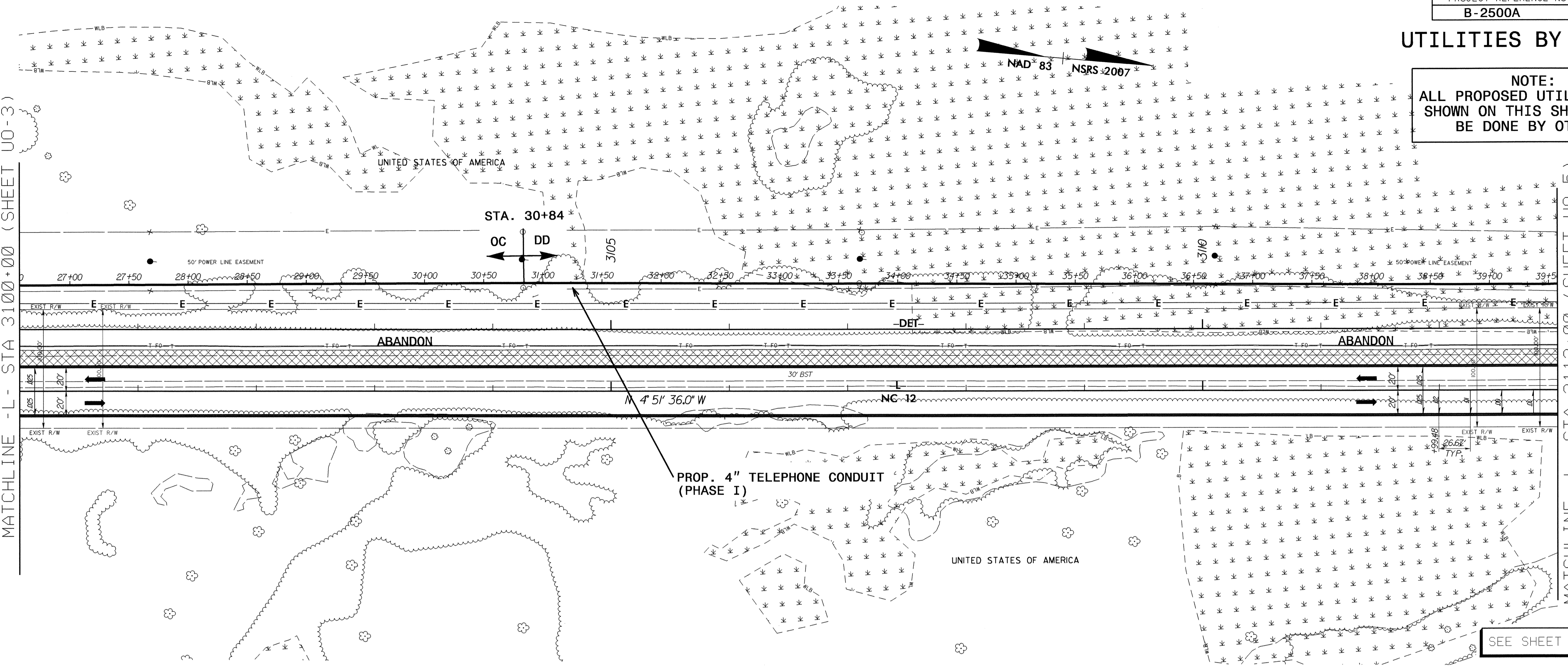
5/14/99

# UTILITIES BY OTHERS

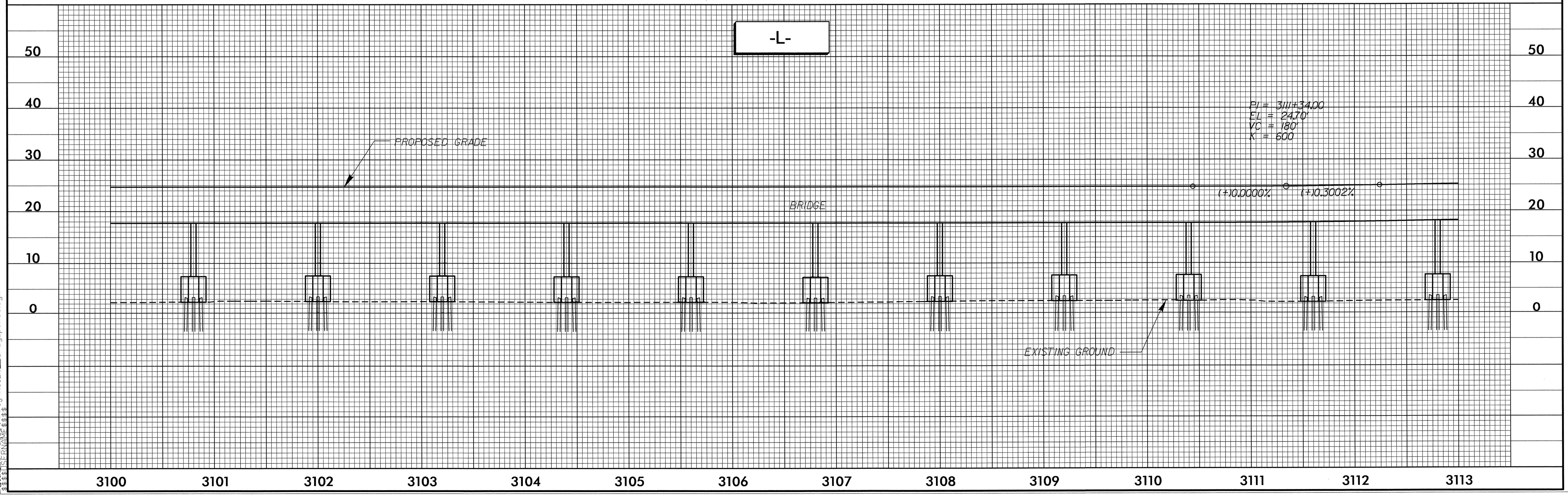
**NOTE:**  
ALL PROPOSED UTILITY WORK  
SHOWN ON THIS SHEET WILL  
BE DONE BY OTHERS

MATCHLINE -L- STA 3100+00 (SHEET U0-3)

MATCHLINE -L- STA 3113+00 (SHEET U0-5)



SEE SHEET 2-F FOR DETOUR



R:\s\18-OCT-2012 07:40 P:\NC\2500A\U0-4.dwg

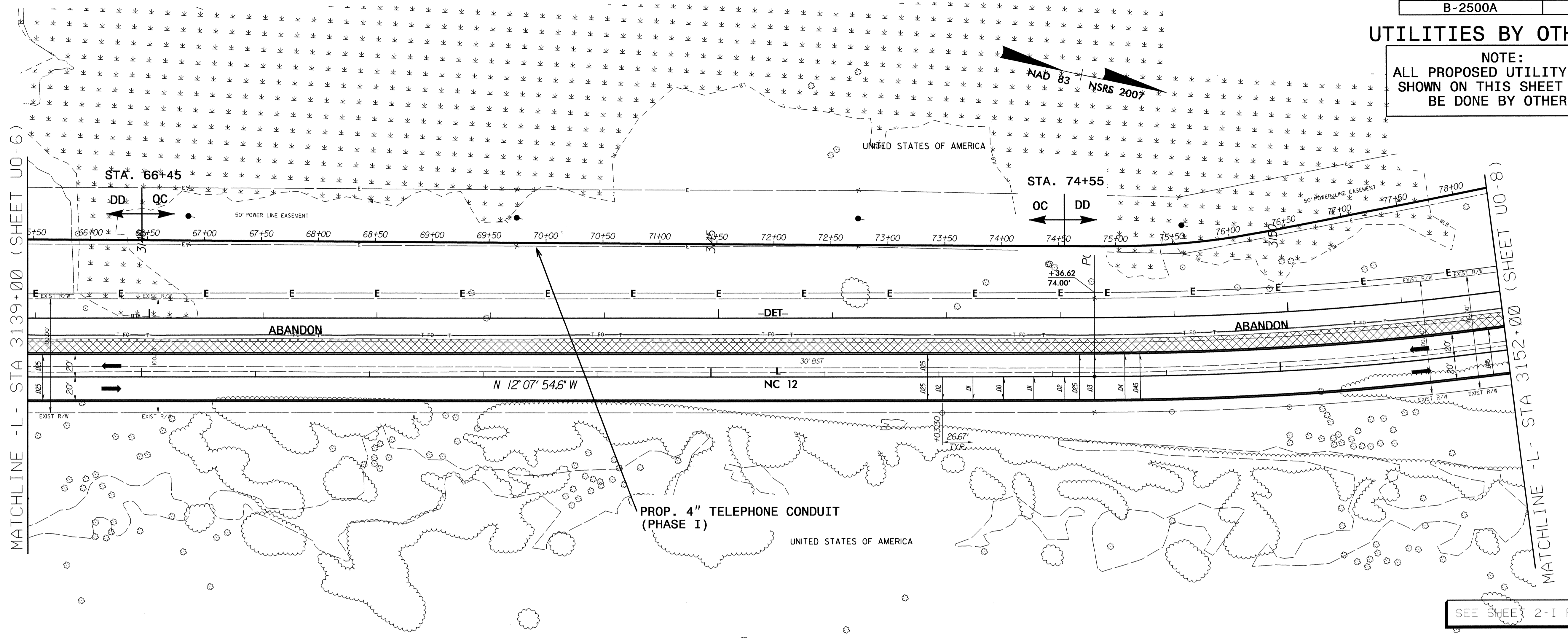




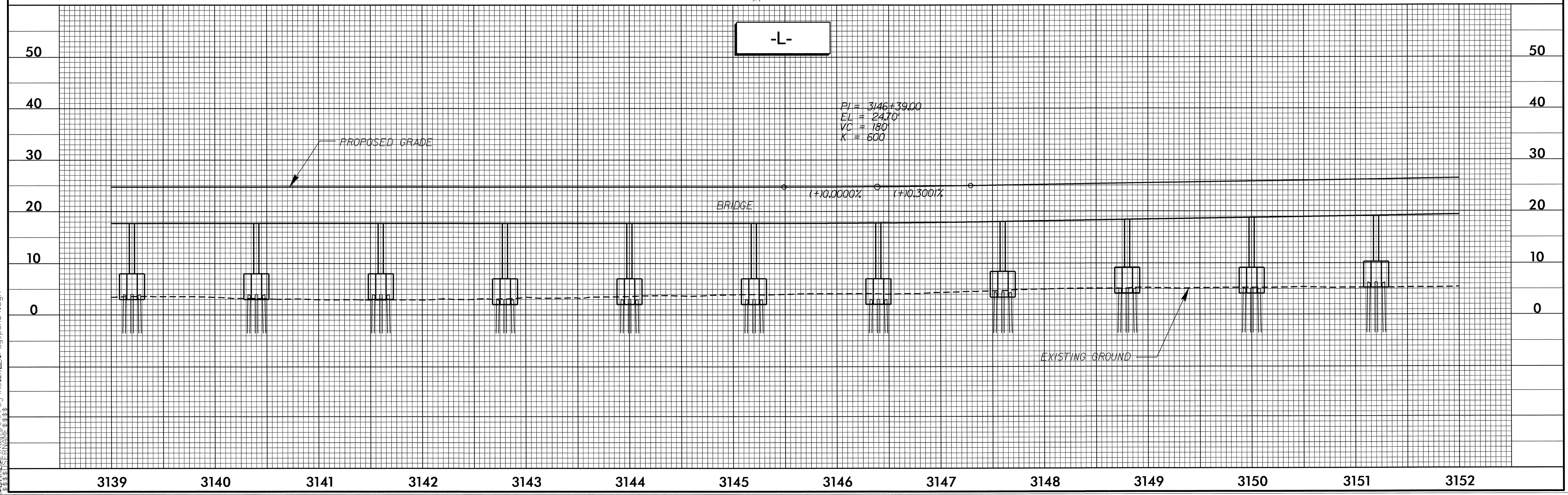
5/14/99

### UTILITIES BY OTHERS

NOTE:  
ALL PROPOSED UTILITY WORK  
SHOWN ON THIS SHEET WILL  
BE DONE BY OTHERS



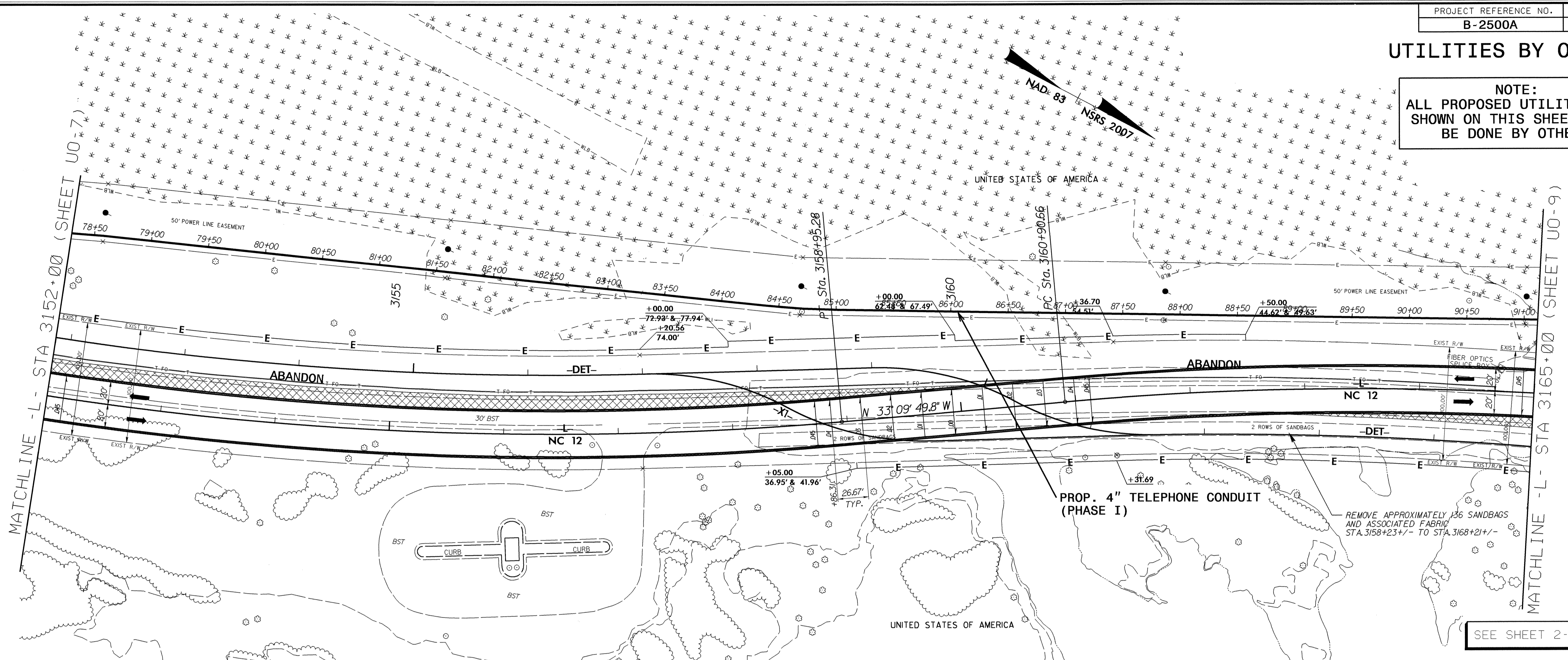
SEE SHEET 2-I FOR DETOUR



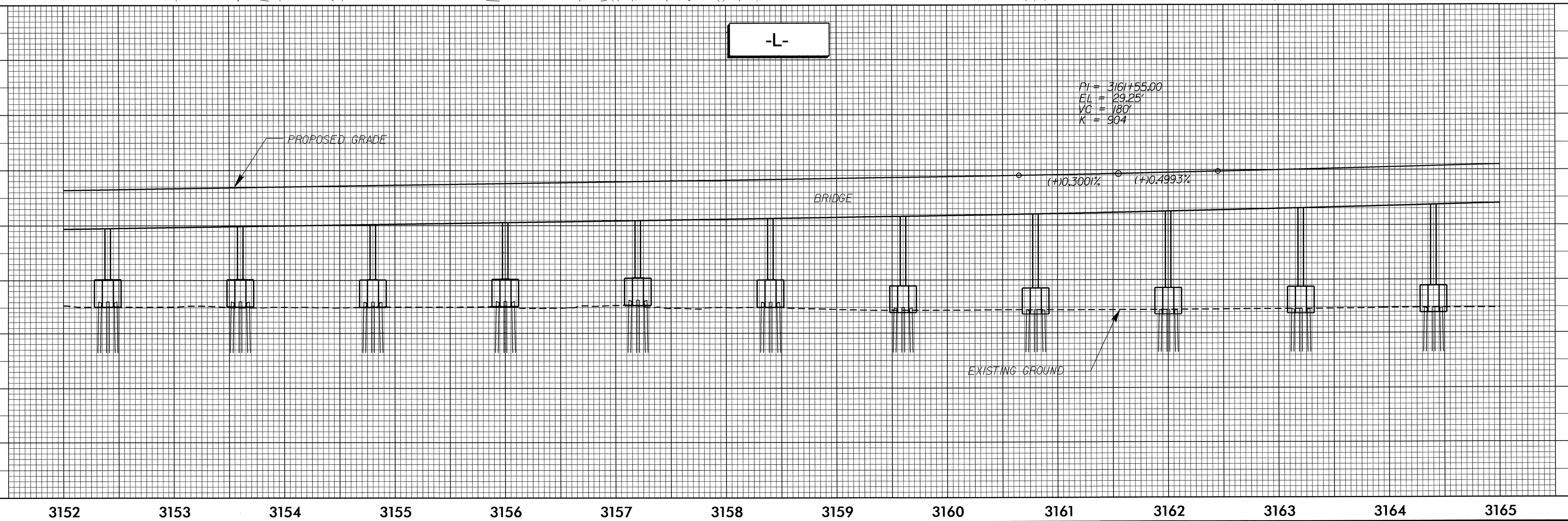
R:\08-OCT-2012 07:40...dgn

**UTILITIES BY OTHERS**

**NOTE:**  
 ALL PROPOSED UTILITY WORK  
 SHOWN ON THIS SHEET WILL  
 BE DONE BY OTHERS



SEE SHEET 2-J FOR DETOUR



5/14/99  
 R:\00000000\2012\0740\RA\00000000\00000000\00000000.dgn  
 18-OCT-2012 07:40

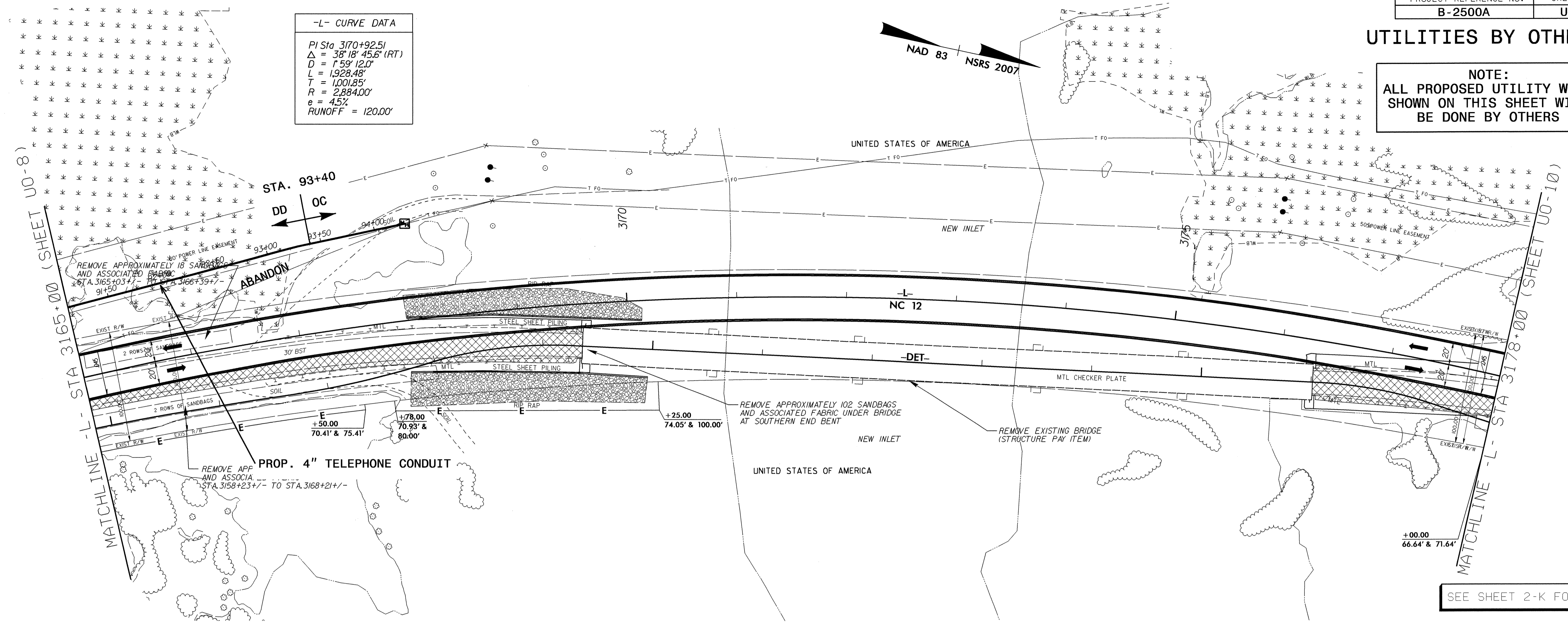


5/14/99

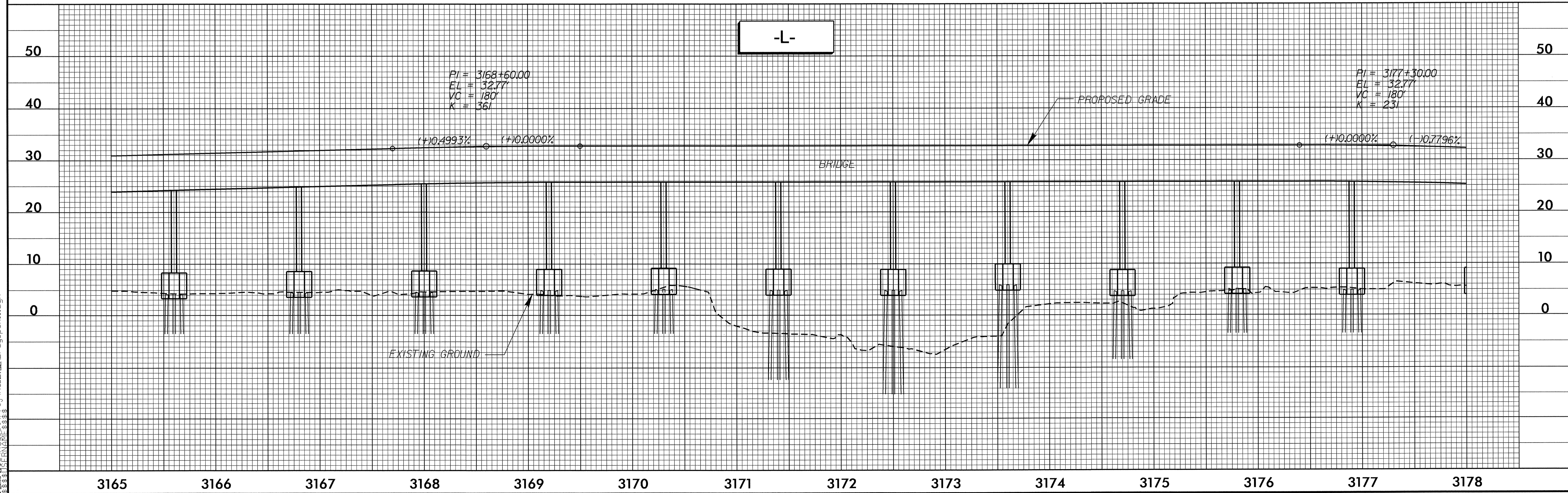
### UTILITIES BY OTHERS

**NOTE:**  
ALL PROPOSED UTILITY WORK  
SHOWN ON THIS SHEET WILL  
BE DONE BY OTHERS

**-L- CURVE DATA**  
 PI Sta 3170+92.51  
 $\Delta = 38^{\circ} 18' 45.6" (RT)$   
 $D = 1^{\circ} 59' 12.0"$   
 $L = 1,928.48'$   
 $T = 1,001.85'$   
 $R = 2,884.00'$   
 $e = 4.5\%$   
 RUNOFF = 120.00'



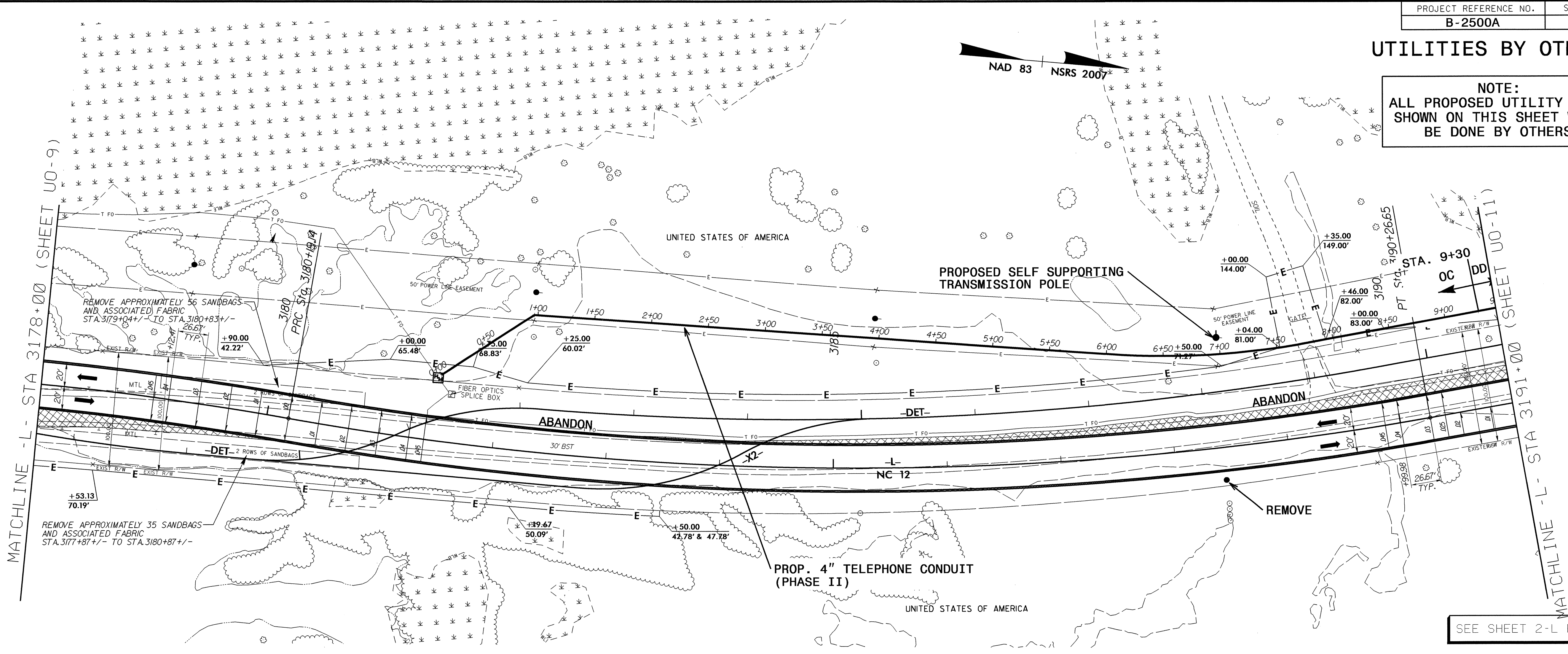
SEE SHEET 2-K FOR DETOUR



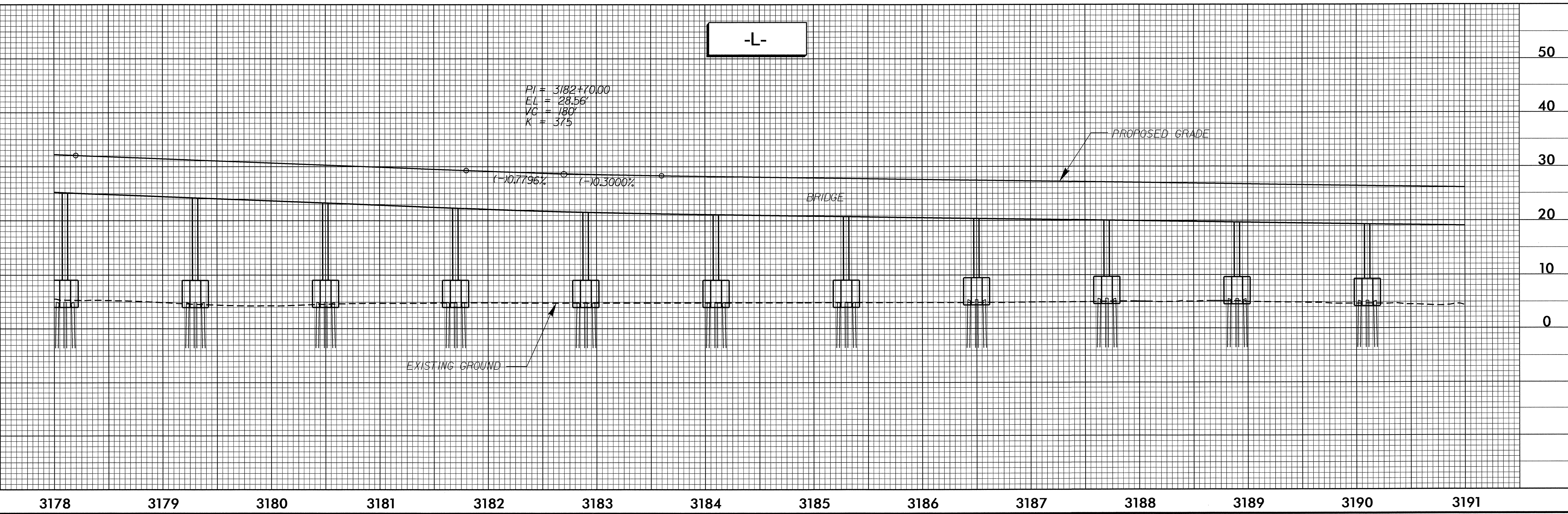
R:\18-OCT-2012 07:40...dgn

UTILITIES BY OTHERS

NOTE:  
ALL PROPOSED UTILITY WORK  
SHOWN ON THIS SHEET WILL  
BE DONE BY OTHERS



SEE SHEET 2-L FOR DETOUR



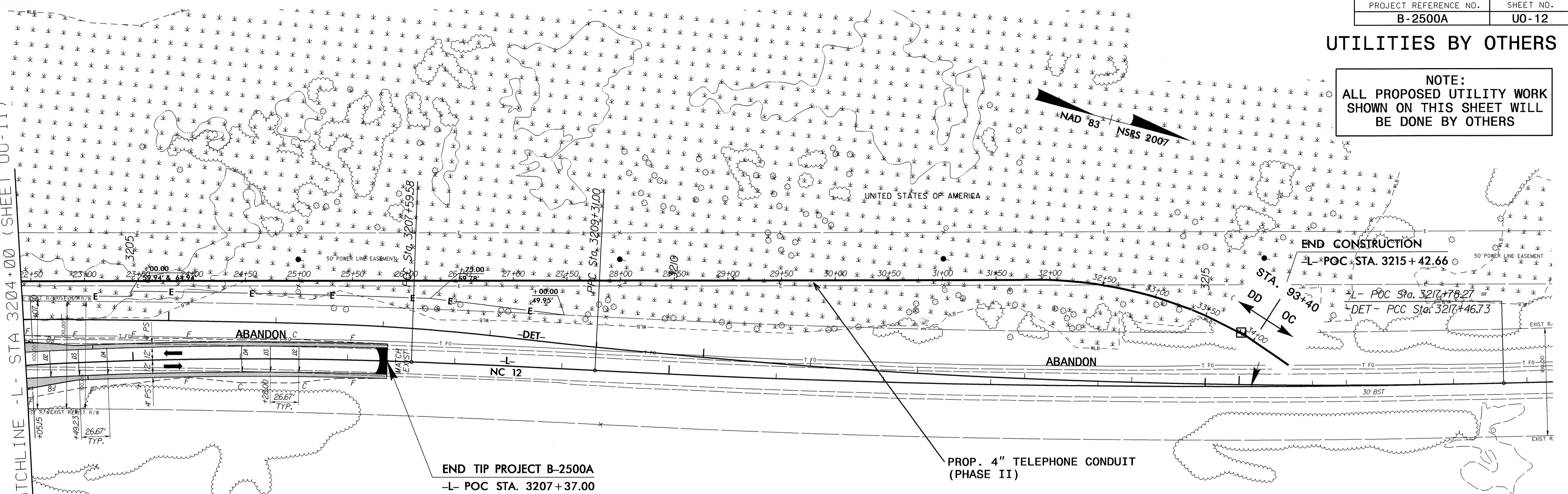


5/14/99

### UTILITIES BY OTHERS

NOTE:  
ALL PROPOSED UTILITY WORK  
SHOWN ON THIS SHEET WILL  
BE DONE BY OTHERS

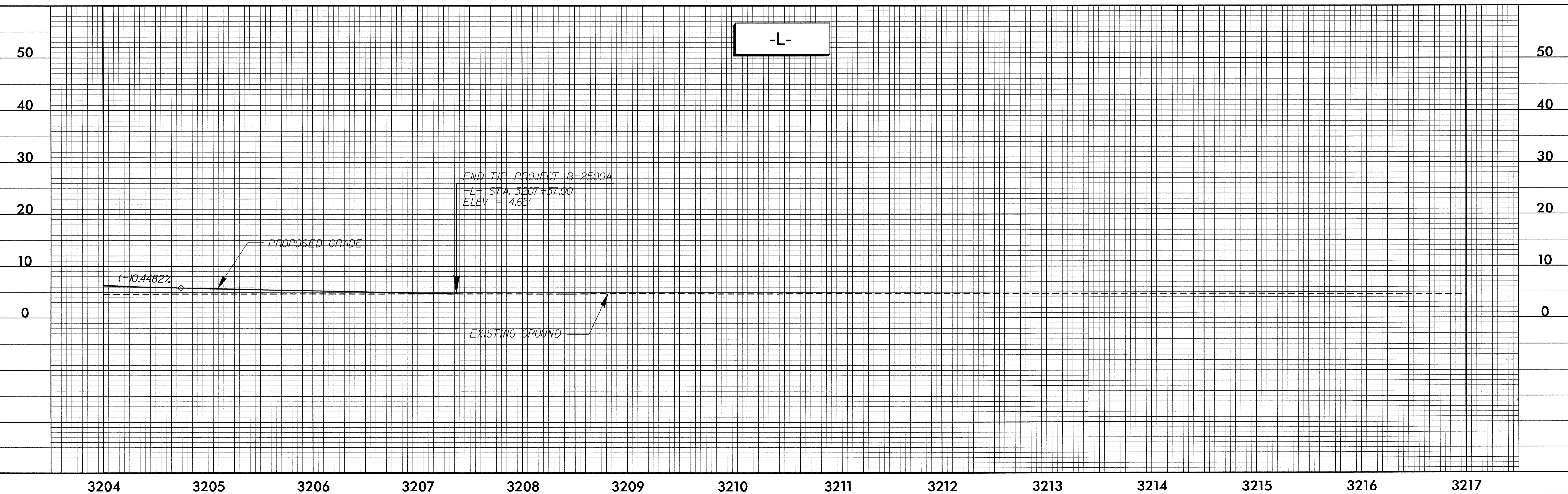
MATCHLINE -L- STA 3204+00 (SHEET U0-11)



-L- CURVE DATA

PI Sta 3205+64.56 Δ = 5° 35' 28.7" (RT) D = 1° 25' 56.6" L = 390.35' T = 195.33' R = 4,000.00' e = 4.0% RUNOFF = 107.00'	PI Sta 3208+45.29 Δ = 0° 51' 25.3" (RT) D = 0° 29' 59.9" L = 171.42' T = 85.71' R = 11,460.00'	PI Sta 3217+33.43 Δ = 8° 00' 38.4" (LT) D = 0° 29' 59.9" L = 1,602.25' T = 802.43' R = 11,460.00'
---	---	--

SEE SHEET 2-N FOR DETOUR



R:\s\18-OCT-2012 07:10...psh14.dgn