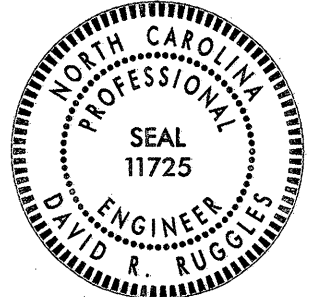


STATE OF NORTH CAROLINA
DEPARTMENT OF TRANSPORTATION

SIGNING PLAN
ROWAN COUNTY

LOCATION: ROADWAY AND INTERSECTION UPGRADES, LANDIS, NC

TIP NO. P-5206D	SHEET NO. SIGN-1
APPROVED: <i>David Ruggles</i>	
DATE: 7-22-13	
SEAL: 	

ROADWAY STANDARD DRAWING

THE FOLLOWING ROADWAY STANDARDS AS APPEAR IN "ROADWAY STANDARD DRAWINGS" - PROJECT SERVICES UNIT - N.C. DEPARTMENT OF TRANSPORTATION - RALEIGH, N.C., DATED JANUARY 2012 ARE APPLICABLE TO THIS PROJECT AND BY REFERENCE HEREBY ARE CONSIDERED A PART OF THESE PLANS:

STD. NO.	TITLE
904.10	ORIENTATION OF GROUND MOUNTED SIGNS
904.50	MOUNTING OF TYPE 'D', 'E', AND 'F' SIGNS

PROJECT NOTES

- DISPOSAL OF SIGN SYSTEM, U-CHANNEL

GENERAL NOTES


- SIGNS FURNISHED BY CONTRACTOR.
- ALL EXISTING SIGNS AND SIGN SYSTEMS WITHIN THE PROJECT LIMITS SHALL BE REMOVED AND DISPOSED OF UNLESS OTHERWISE NOTED ON THE PLANS.
- IF REMOVAL OR RELOCATION OF SIGNS ON PRIVATE STREET (NON-STATE MAINTAINED) IS REQUIRED DUE TO CONSTRUCTION, THE CONTRACTOR SHALL INFORM THE ENGINEER. THE WORK WILL BE COMPLETED BY OTHERS.
- SIGNING PLANS DO NOT INCLUDE TEMPORARY CONSTRUCTION SIGNING. SEE TRAFFIC CONTROL PLANS.
- WHEN NOT STATIONED OR DIMENSIONED ON PLANS, ALL 'E' AND 'F' SIGNS SHALL BE FIELD LOCATED BY THE ENGINEER.
- WHEN EXISTING SIGNS ARE REMOVED AND INSTALLED ON NEW SUPPORTS, THE RE-ERECTION SHALL IMMEDIATELY FOLLOW THE REMOVAL.
- THE BACKGROUND FOR TYPE E & F SIGNS SHALL BE TYPE C REFLECTIVE SHEETING.
- ALL EXISTING INFORMATIONAL SIGNS WITHIN PROJECT LIMITS SHALL BE RELOCATED AS DIRECTED BY THE ENGINEER. THIS WORK WILL BE PAID FOR PER EACH UNDER THE PAY ITEM "SIGN ERECTION, TYPE D (GROUND MOUNTED)". ANY SIGN RELOCATIONS NOT REQUIRING POST INSTALLATION WILL BE INCIDENTAL.
- ALL EXISTING SIGNS WITHIN THE PROJECT LIMITS THAT ARE NOT RELOCATED SHALL BE REMOVED AND DISPOSED OF UNLESS OTHERWISE NOTED ON PLANS.

SUMMARY OF QUANTITIES

STD. NO.	SEC. NO.	ITEM DESCRIPTION	QUANTITY	UNIT
4025000000	901	CONTRACTOR FURNISHED TYPE 'E' SIGN	150	SF
4072000000	903	SUPPORTS, 3 LB. STEEL U-CHANNEL	300	LF
4096000000	904	SIGN ERECTION, TYPE 'D'	12	EA
4102000000	904	SIGN ERECTION, TYPE 'E'	30	EA
4155000000	907	DISPOSAL OF SIGN SYSTEM, U-CHANNEL	25	EA

PLAN PREPARED BY: STEWART

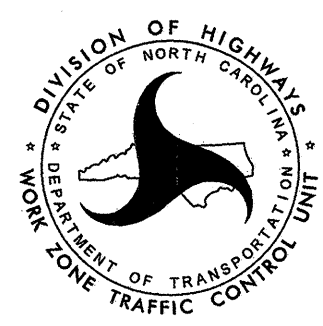
DAVID RUGGLES, PE PROJECT ENGINEER
BENJAMIN CRAWFORD, PE PROJECT DESIGN ENGINEER



Firm License No. C-1051
421 Fayetteville St.
Suite 400
Raleigh, NC 27601
T 919.380.8750
www.stewartinc.com

PLAN REVIEWED BY: N.C.D.O.T. SIGNING AND DELINEATION UNIT

SUSAN B. KUNZ SIGNING & DELINEATION REGIONAL ENGINEER
JAMES HAMBRIGHT SIGNING & DELINEATION PROJECT DESIGN ENGINEER



INDEX

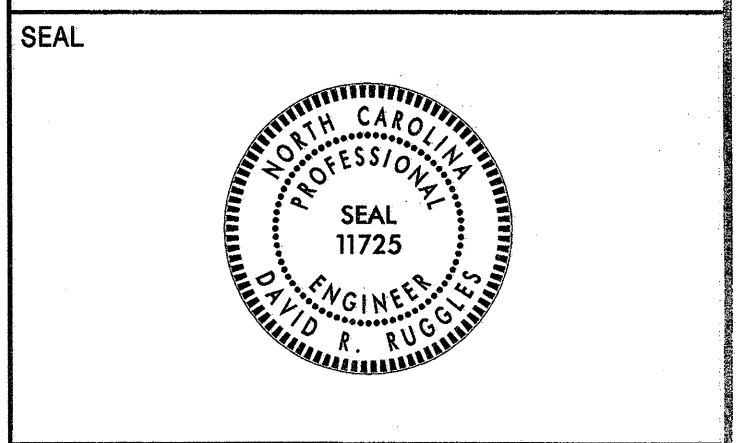
SHEET NO.	DESCRIPTION
SIGN-1	TITLE SHEET
SIGN-2	TYPE 'E' SIGNS
SIGN-3 THRU SIGN 5	EXISTING AND PROPOSED SIGNS

0164DEL P10b2

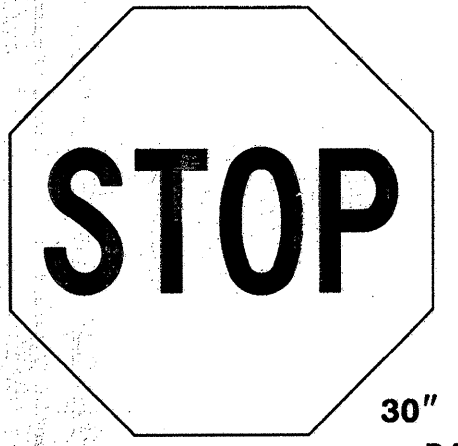
STEWART
Firm License No. C10011
421 Fayetteville Rd
Raleigh, NC 27603
T 919-886-8720
www.stewartinc.com

TIP NO. P-5206D SHEET NO. SIGN-2

APPROVED: *David Ruggles*
DATE: 7-22-13



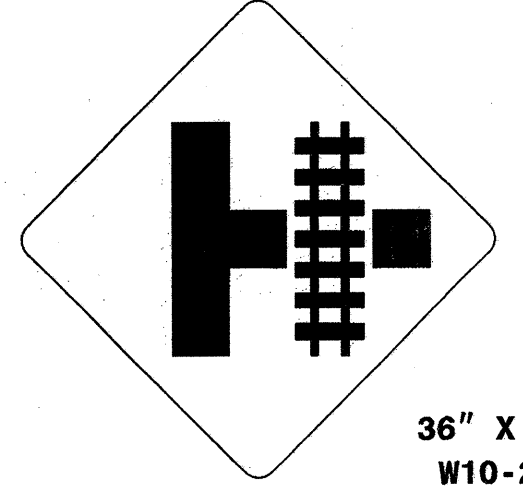
401 QUANTITY REQ'D 7



30" X 30"
R1-1

ONE "U" POST PER SIGN

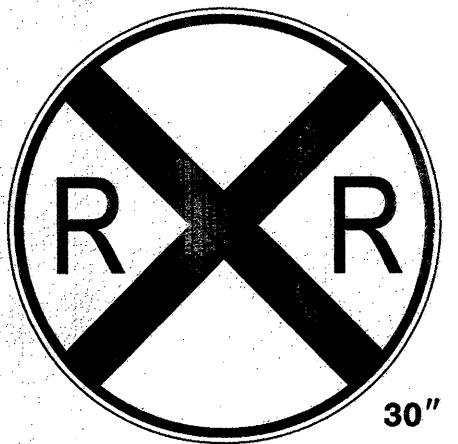
406 QUANTITY REQ'D 2



36" X 36"
W10-2R

ONE "U" POST PER SIGN

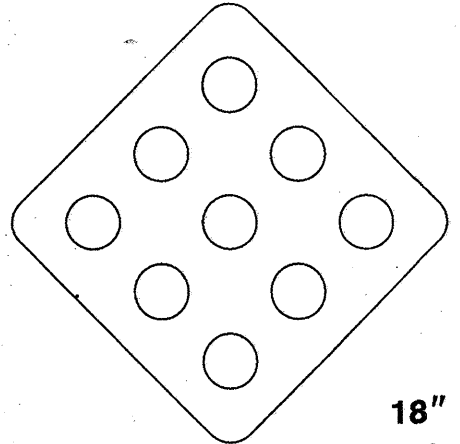
402 QUANTITY REQ'D 8



30" DIA
W10-1

ONE "U" POST PER SIGN


407 QUANTITY REQ'D 6



18" X 18"
OM4-1

ONE "U" POST PER SIGN

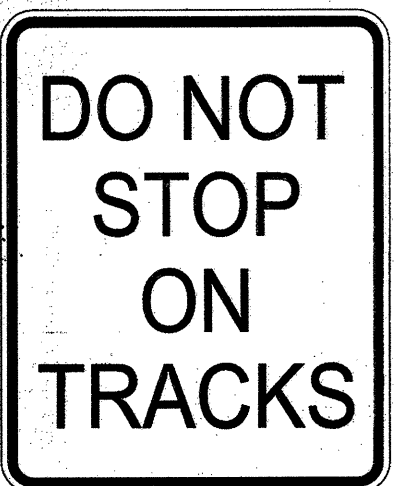
403 QUANTITY REQ'D 5



24" X 36"
R8-10

ONE "U" POST PER SIGN

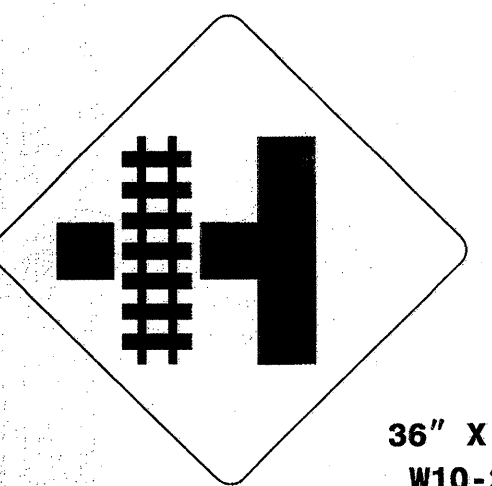
404 QUANTITY REQ'D 6



24" X 30"
R8-8

ONE "U" POST PER SIGN

405 QUANTITY REQ'D 2

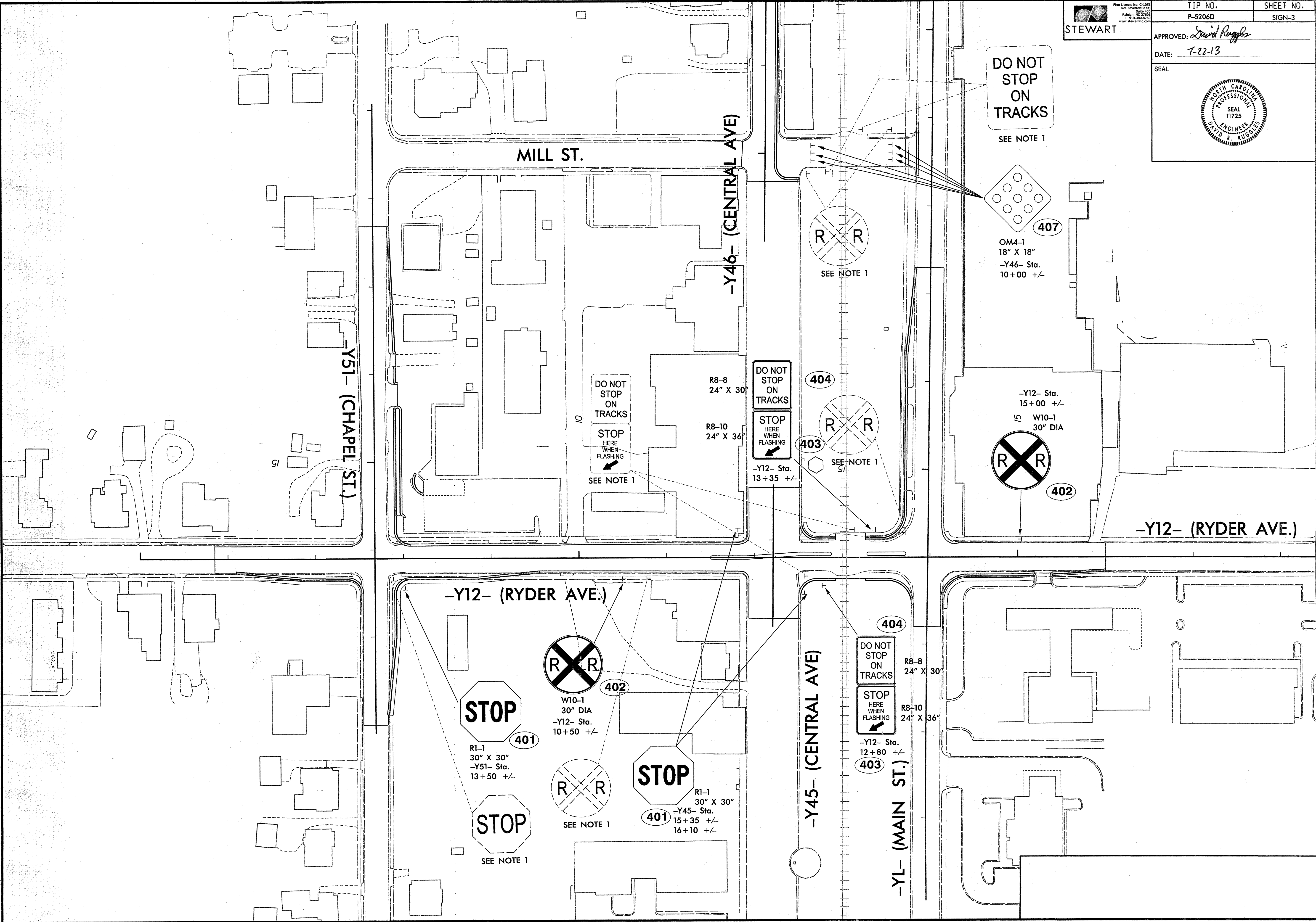


36" X 36"
W10-2L

ONE "U" POST PER SIGN

TYPE "E" SIGNS

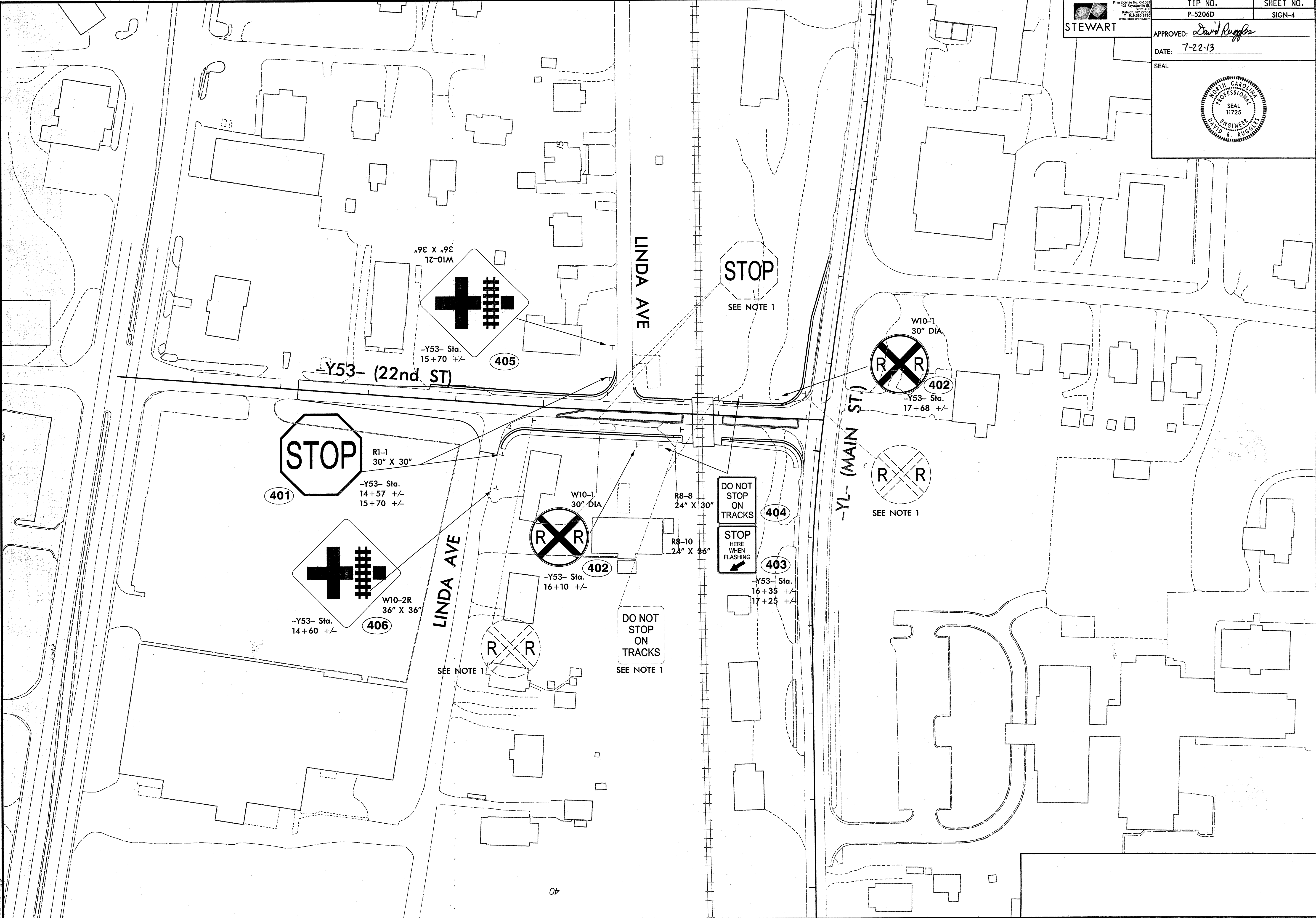
4/11/2013 11:58:11 AM
C:\Users\jrduggles\Documents\Projects\0164DEL P10b2.dgn



0164DEL P10b2

STEWART
Firm License No. C-1450
421 Fayetteville Rd.
Raleigh, NC 27603
T 919.306.8700
www.stewartinc.com

TIP NO. P-5206D	SHEET NO. SIGN-4
APPROVED: <i>David Ruggles</i>	
DATE: 7-22-13	
SEAL	



4/11/2013
User: ruggles
4/11/2013 10:52:06 AM
40

STEWART <small>Firm License No. C-1033 422 Fayetteville Rd. Raleigh, NC 27603 T 919.386.5729 www.stewartinc.com</small>	TIP NO. P-5206D	SHEET NO. SIGN-5
	APPROVED: <i>David Ruggles</i>	
DATE: 7-22-13		SEAL
