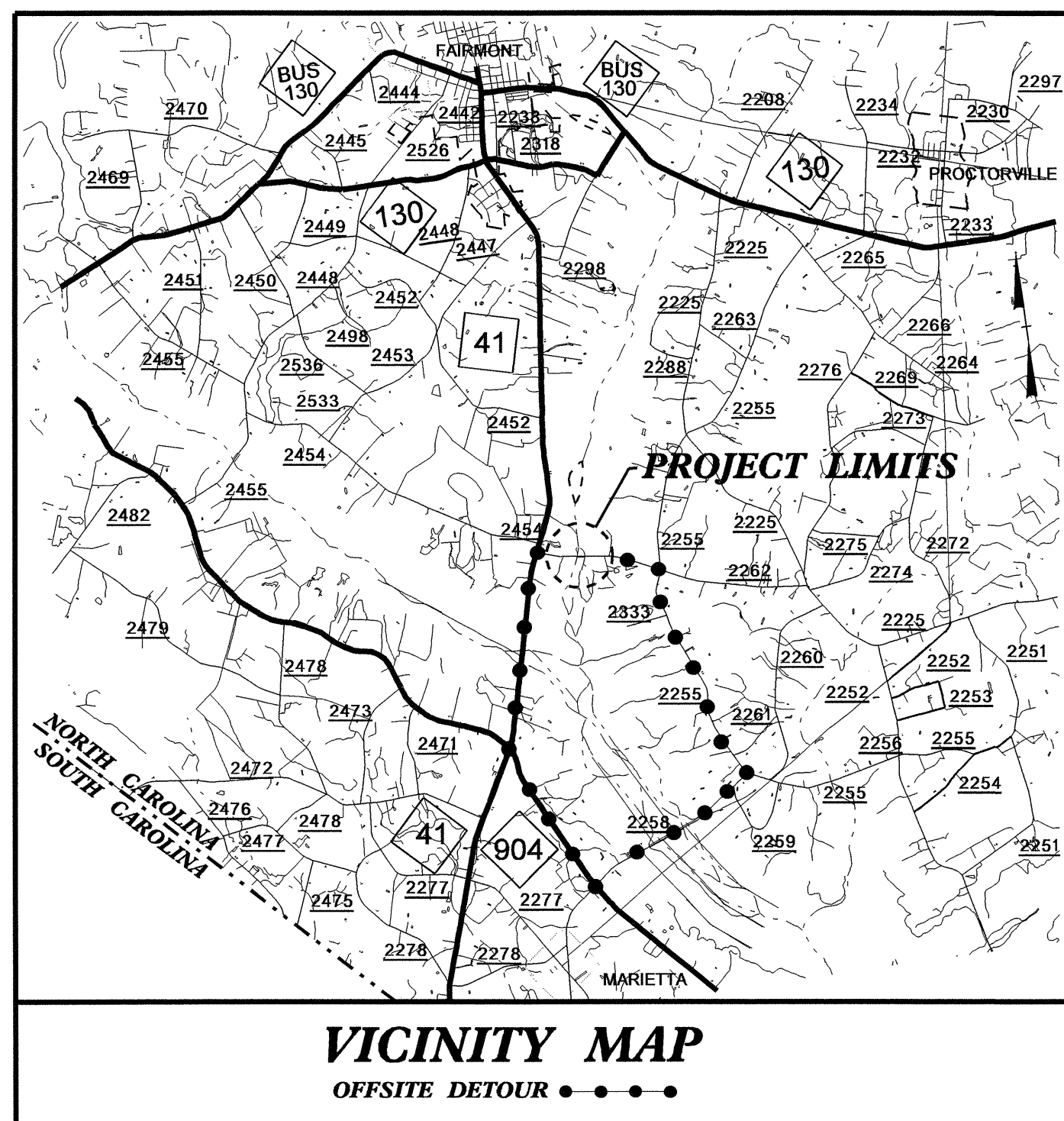


TIP PROJECT: B-4619

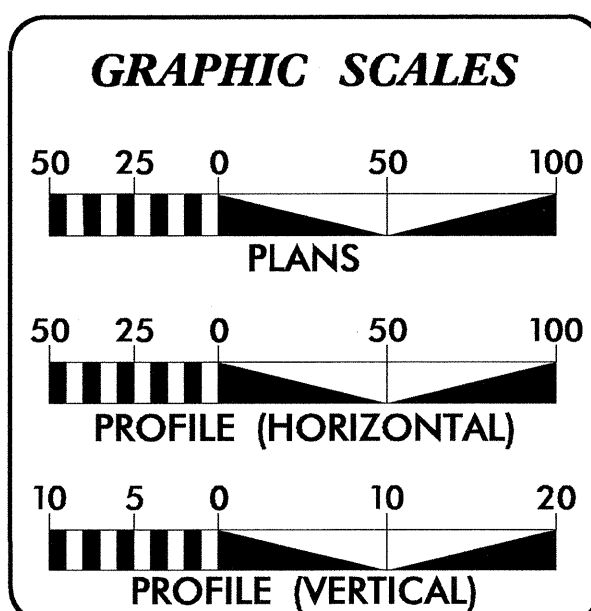
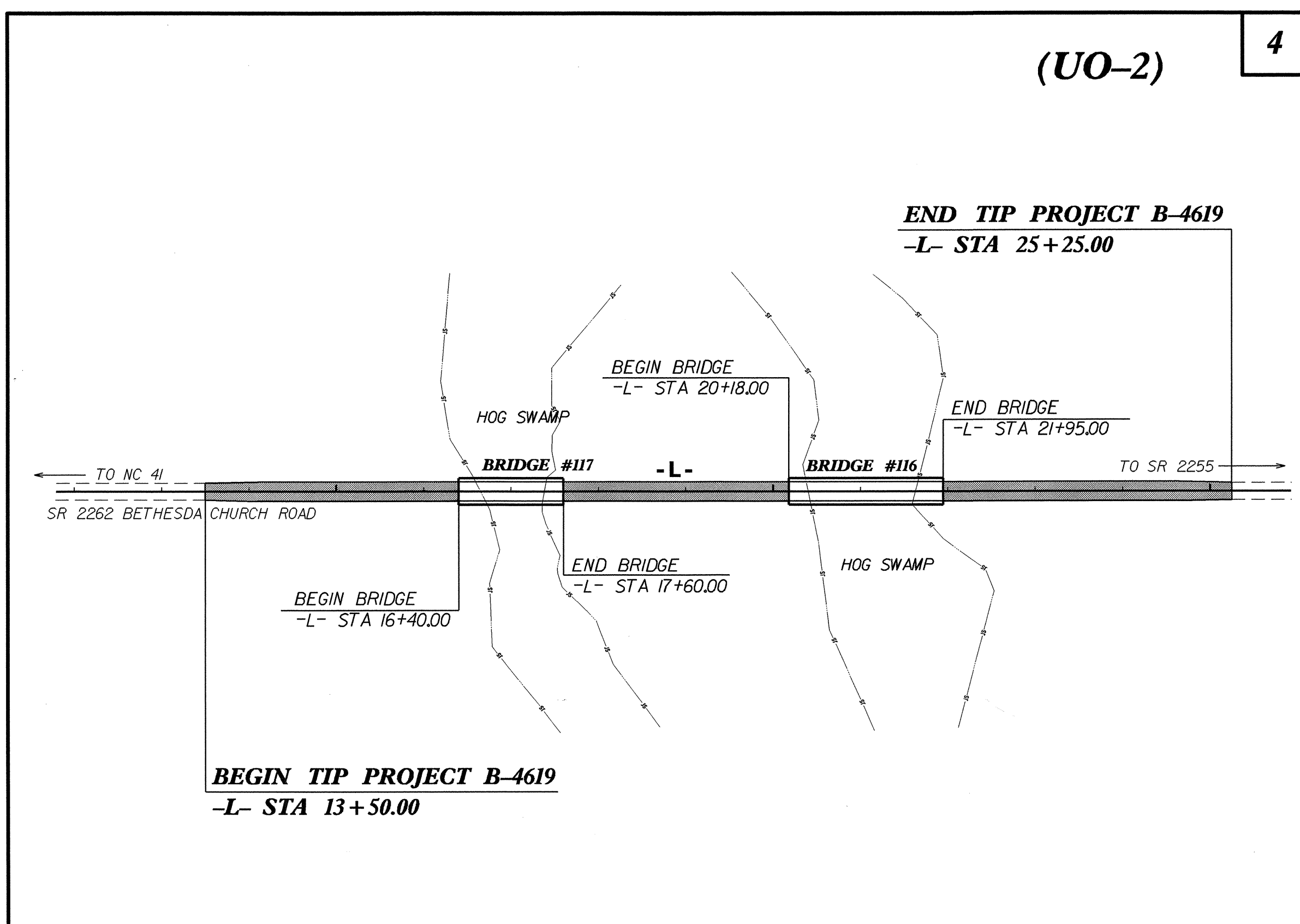
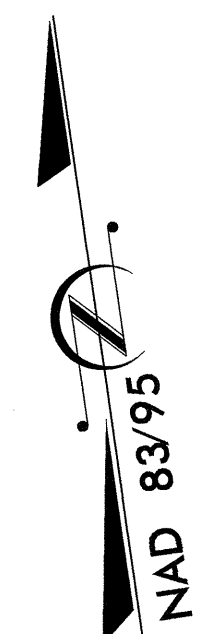


STATE OF NORTH CAROLINA
DIVISION OF HIGHWAYS

**UTILITIES BY OTHERS PLANS
ROBESON COUNTY**

**LOCATION: BRIDGES NO. 116 AND 117 ON SR 2262
(BETHESDA CHURCH ROAD) OVER HOG SWAMP**

TYPE OF WORK: UTILITIES RELOCATION



INDEX OF SHEETS	
SHEET NO.	DESCRIPTION
UO-1	TITLE SHEET
UO-2	UTILITY BY OTHERS PLAN SHEET

UTILITY OWNERS ON PROJECT
(1) LUMBEE RIVER EMC (POWER)
(2) AT&T OF NC (TELEPHONE)
(3) CAROLINA PARTNERS (CATV)

PREPARED IN THE OFFICE OF:
**DIVISION OF HIGHWAYS
UTILITIES ENGINEERING
SECTION**

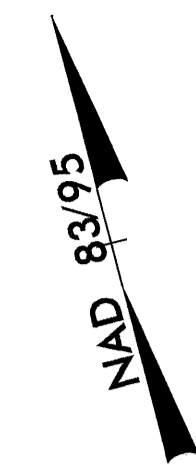
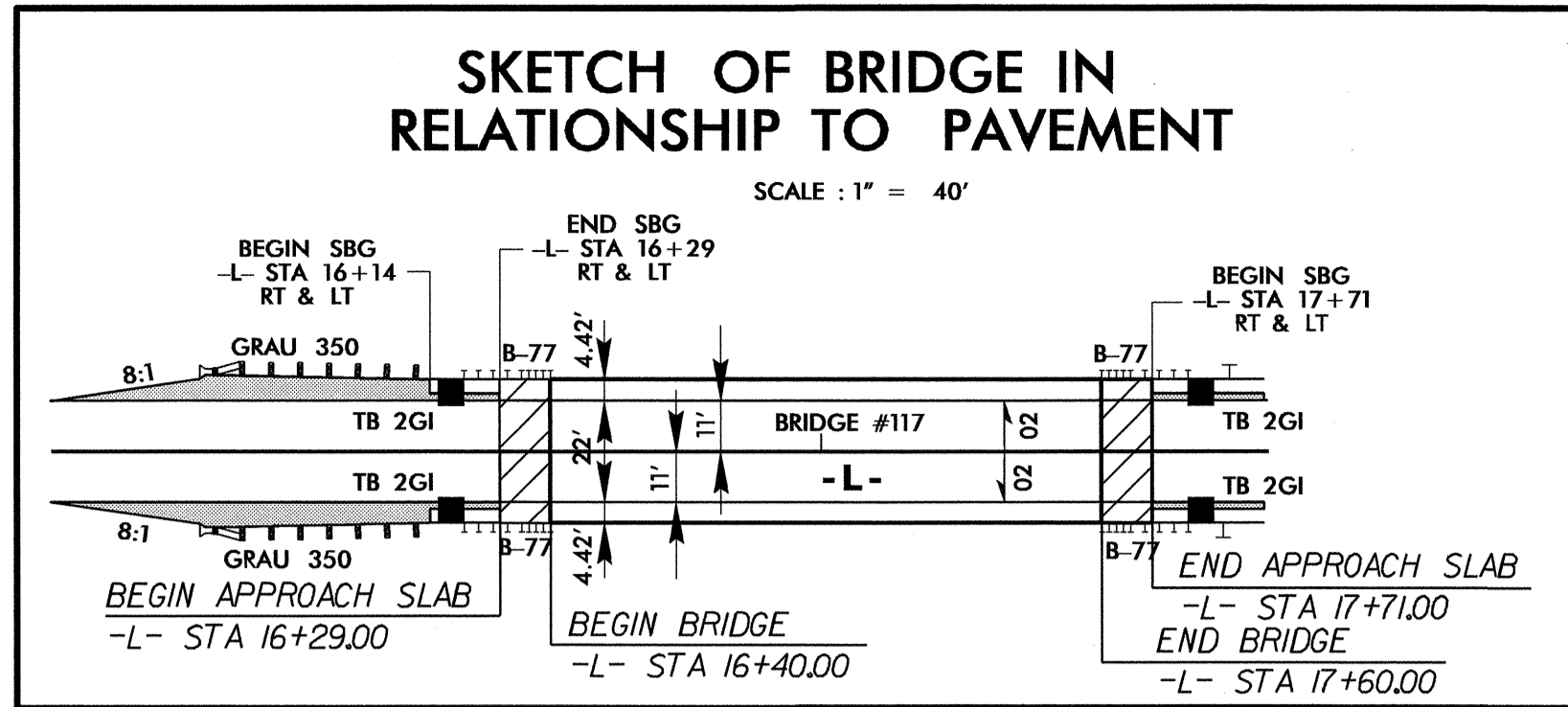
1591 MAIL SERVICES CENTER
RALEIGH NC 27699-1591
PHONE (919) 707-6690
FAX (919) 250-4151

Roger Worthington, P.E.	UTILITIES SECTION ENGINEER
Corey Bousquet, P.E.	UTILITIES SQUAD LEADER PROJECT ENGINEER
Nabil Hamdan	UTILITIES PROJECT DESIGNER

20-MAR-2013 10:04 R:\Utilities\Robeson\Proj\B4619_rdy_u0_tsh.dgn \$\$\$USERNAME\$\$\$

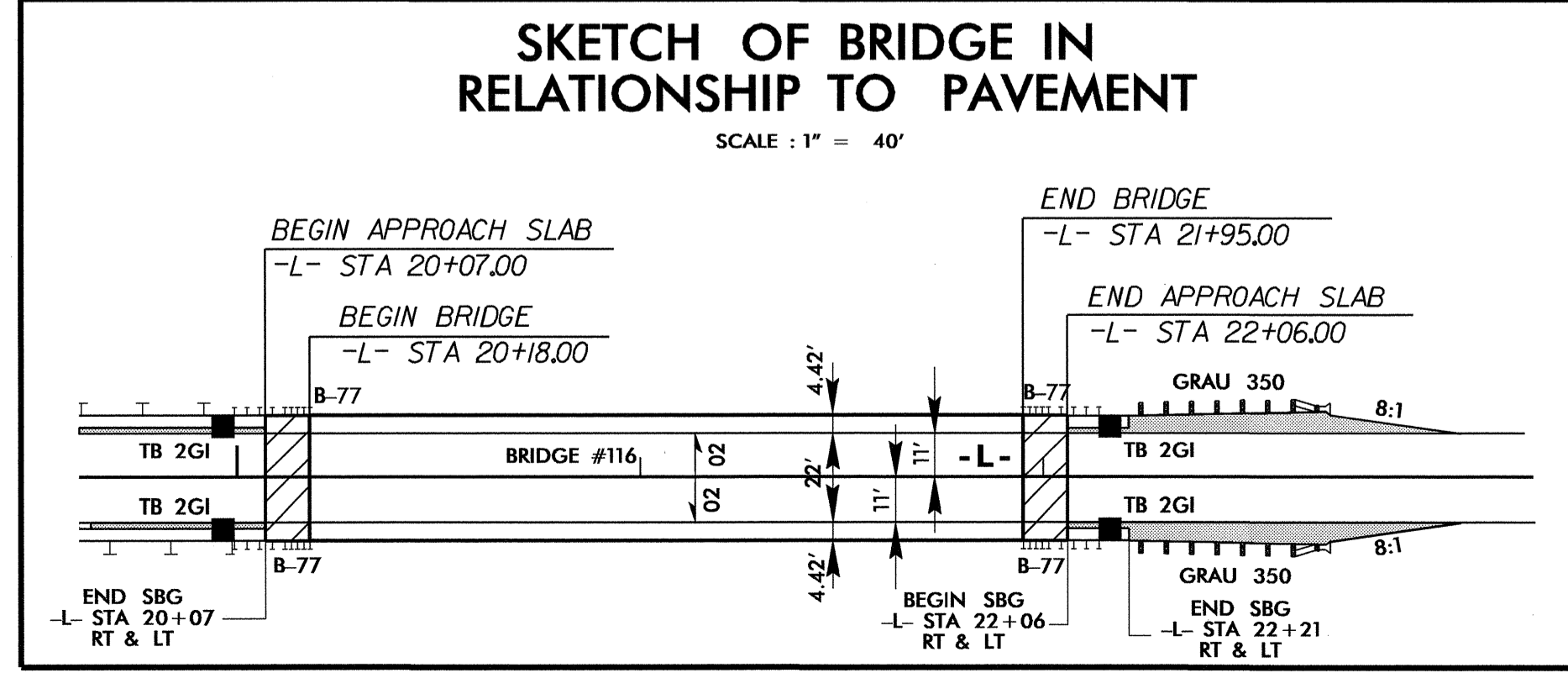
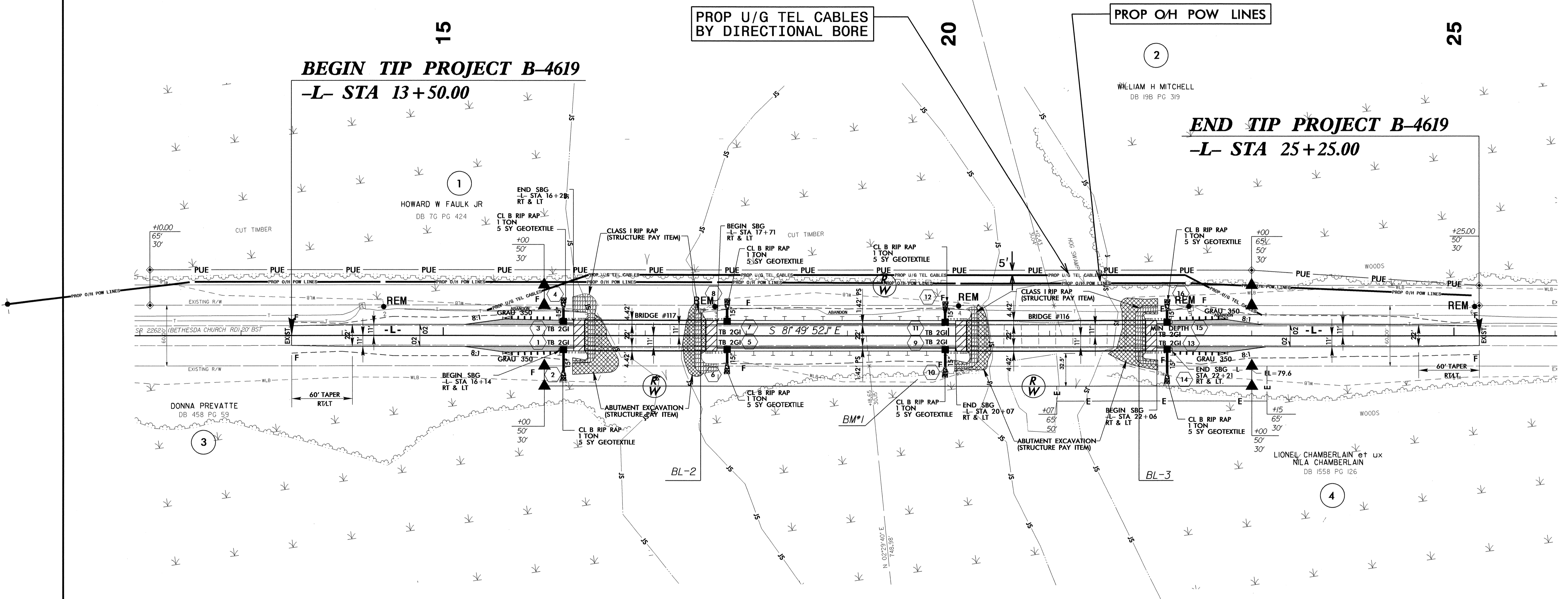
UTILITIES BY OTHERS

NOTE:
ALL PROPOSED UTILITY WORK
SHOWN ON THIS SHEET WILL
BE DONE BY OTHERS



15
BEGIN TIP PROJECT B-4619
-L- STA 13+50.00

END TIP PROJECT B-4619
-L- STA 25+25.00



PAVED SHOULDER

5/14/99
15-APR-2013 15:09
R:\Utilities\B4619\Drawings\B4619_U02.dgn