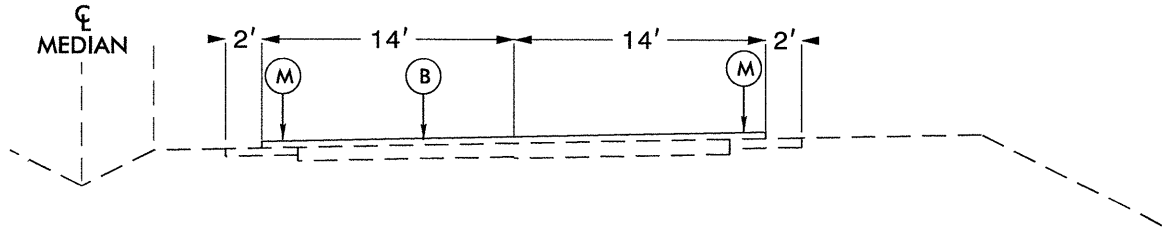


PROJECT REFERENCE NO. 4CR.10331.18	SHEET NO. 1
ROADWAY DESIGN ENGINEER	PAVEMENT DESIGN ENGINEER



EDGECOMBE CO.

Notes: Typical for West Bound Lanes of US 64 from Martin County Line to Tar River near Tarboro and East Bound Lanes of US 64 from Tar River near Tarboro to Martin County Line.

Notes: On and off ramps to be paved with Open-graded Asphalt Friction Course, Type FC-1 Mod, at an average rate of 70 lbs. per sq. yd. across ramp lane and 2' shoulder each side, from the gore to end of taper.

PAVEMENT SCHEDULE	
B	OPEN-GRADED ASPHALT FRICTION COURSE, TYPE FC-2 MOD, AT AN AVERAGE RATE OF 90 LBS. PER SQ. YD. ACROSS LANES AND 2' SHOULDER EACH SIDE
M	MILLED RUMBLE STRIPS ALONG EACH SHOULDER

NOTE: PAVEMENT EDGE SLOPES ARE 1:1 UNLESS SHOWN OTHERWISE.

30-APR-2013 13:38
 D:\M...
 00AFC\2013 US 64 00AFC Typ.dgn

PROJECT NO.	SHEET NO.	TOTAL NO.
4CR.10331.18	2	

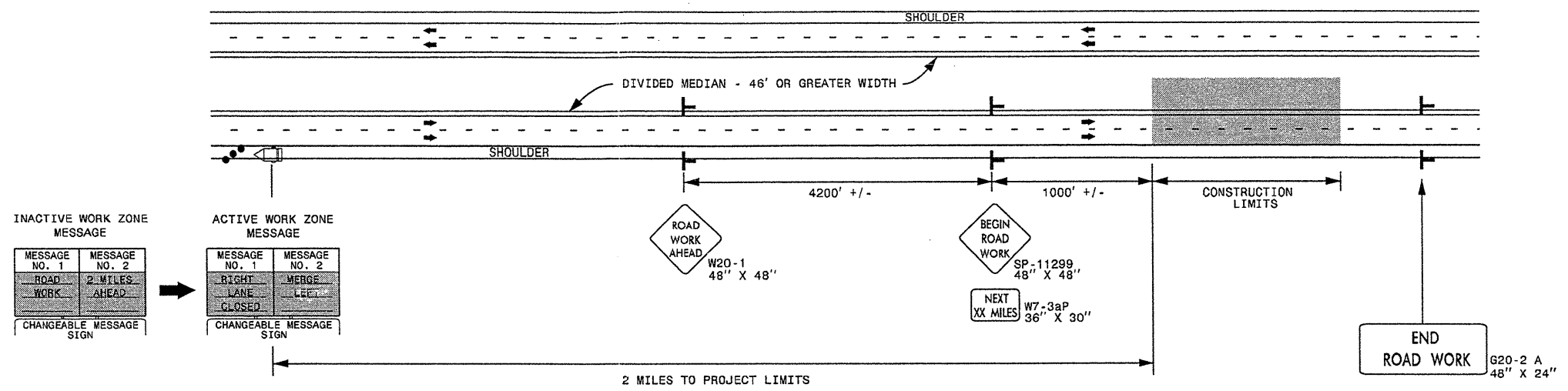
SUMMARY OF QUANTITIES

PROJECT NO	COUNTY	MAP NO	ROUTE	DESCRIPTION	TYP	LANES	LANE TYPE	FINAL SURFACE TESTING REQUIRED	WARM MIX ASPHALT REQUIRED	LENGTH MI	WIDTH FT	INCIDENTAL MILLING SY	POLYMER MODIFIED ASPHALT BINDER FOR PLANT MIX TONS	OGAFC, TYPE FC-1 MOD TONS	OGAFC, TYPE FC-2 MOD TONS	MILLED RUMBLE STRIPS LF
4CR.10331.18	Edgecombe	1	US 64 WB	FROM MARTIN CO LINE TO TAR RIVER BRIDGE	1	2	MD	NO	NO	11.74	40	1,000	573	708	8,679	123,974
TOTAL FOR MAP NO. 1										11.74		1,000	573	708	8,679	123,974
4CR.10331.18	Edgecombe	2	US 64 EB	FROM TAR RIVER BRIDGE TO MARTIN CO LINE	1	2	MD	NO	NO	11.78	40	1,000	577	744	8,708	124,397
TOTAL FOR MAP NO. 2										11.78		1,000	577	744	8,708	124,397
TOTAL FOR PROJ NO. 4CR.10331.18										23.52		2,000	1,150	1,452	17,387	248,371
GRAND TOTAL										23.52		2,000	1,150	1,452	17,387	248,371

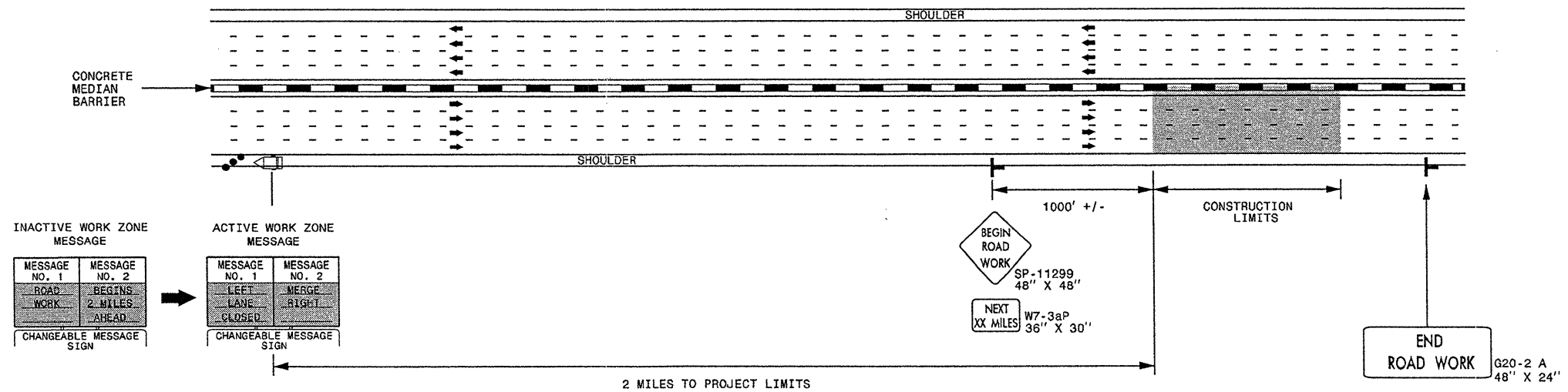
THERMOPLASTIC AND PAINT QUANTITIES

PROJECT NO	COUNTY	MAP NO	ROUTE	DESCRIPTION	TYP	LANES	LANE TYPE	LENGTH	WIDTH	4366000000-E	4589000000-N	4510000000-N	4688000000-E		4690000000-E	4700000000-E	4725000000-E	4900000000-N
										GEN. SIGNING WORK ZONE ADVANCE/GENERAL WARNING SIGNING SF	GEN. TRAFFIC CONTROL TEMP. TRAFFIC CONTROL LS	LAW ENFORCEMENT HR	6" X 90 M WHITE THERMO LF	6" X 90 M YELLOW THERMO LF	6" X 120 M WHITE THERMO LF	12" X 90 M WHITE THERMO LF	THERMO MERGE ARROW 90 M EA	CRYSTAL & RED MARKERS EA
4CR.10331.18	Edgecombe	1	US 64 WB	FROM MARTIN CO LINE TO TAR RIVER BRIDGE	1	2	MD	11.74	40	383	1	470	62,027	62,027	16,283	9,343	12	1,484
TOTAL FOR MAP NO. 1								11.74		383	1	470	62,027	62,027	16,283	9,343	12	1,484
4CR.10331.18	Edgecombe	2	US 64 EB	FROM TAR RIVER BRIDGE TO MARTIN CO LINE	1	2	MD	11.78	40	383	*		62,207	62,207	16,599	9,408	15	1,466
TOTAL FOR MAP NO. 2								11.78		383	*		62,207	62,207	16,599	9,408	15	1,466
TOTAL FOR PROJ NO. 4CR.10331.18								23.52		766	*	470	124,234	124,234	32,882	18,751	27	2,950
GRAND TOTAL								23.52		766	1	470	124,234	124,234	32,882	18,751	27	2,950

DIVIDED MEDIANS WITH WIDTHS 46' OR GREATER



DIVIDED MEDIANS WITH WIDTHS LESS THAN 46' OR WITH PERMANENT MEDIAN BARRIER

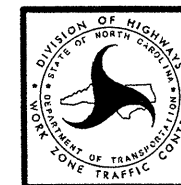


NOTES:

- 1) LATERAL CLEARANCE AT ALL SIGN LOCATIONS SHALL BE 6' AS MEASURED FROM THE EDGE OF PAVEMENT.
- 2) MOUNT SIGNS THAT ARE LARGER THAN 10 SQUARE FEET IN AREA ON TWO OR MORE WOOD OR U-CHANNEL SUPPORTS. PERFORATED SQUARE TUBING SUPPORT SYSTEMS MAY SUPPORT LARGER AREAS ON A SINGLE SUPPORT. FOLLOW MANUFACTURER'S RECOMMENDATIONS. THESE SYSTEMS SHALL BE NCHRP 350 COMPLIANT AND NCDOT APPROVED.
- 3) FOR MEDIAN WIDTHS LESS THAN 46' (MEASURED EDGELINE TO EDGELINE) USE THE BOTTOM DRAWING.
- 4) IF STATIONARY GENERAL WARNING SIGNS ARE USED, THEY WILL BE PAID FOR PER SECTION 104 OF THE NCDOT STANDARD SPECIFICATIONS AS EXTRA WORK.
- 5) INSTALL "ROAD WORK AHEAD" (W20-1) ALONG ENTRANCE RAMP 500' PRIOR TO RAMP TERMINAL, AND "END ROAD WORK" (G20-2a) AT THE END OF EXIT RAMP WITHIN THE WORK ZONE.
- 6) IF MILLED AREAS ARE NOT PAVED BACK BY THE END OF THE WORK DAY, PORTABLE SIGNS SHALL BE USED TO WARN DRIVERS OF THE PRESENT CONDITIONS. THESE ARE TO INCLUDE, BUT NOT LIMITED TO "ROUGH ROAD" W8-8, "UNEVEN LANES" W8-11, "GROOVED PAVEMENT" W8-15 w/MOTORCYCLE PLAQUE MOUNTED BELOW. THESE ARE TO BE DOUBLE INDICATED ON MULTI-LANE ROADWAYS WITH SPEED LIMITS 45 MPH AND GREATER AND WITH DIVIDED MEDIANS OF 46' OR GREATER. THESE PORTABLE SIGNS ARE INCIDENTAL TO THE OTHER ITEMS OF WORK INCLUDED IN THE TEMPORARY TRAFFIC CONTROL (LUMP SUM) PAY ITEM.

LEGEND

- CHANGEABLE MESSAGE SIGN (CMS)
- STATIONARY SIGN
- DIRECTION OF TRAFFIC FLOW
- TRAFFIC DRUM



RESURFACING ADVANCE WARNING SIGNS FOR HIGH SPEED FACILITIES ≥ 60 MPH

5/13/2013 7:03:17 AM Resurfacing\2013\Documents\New_Procedures_05_09_2013\Resurfacing_AdvWarn_Hspd.dgn